

WALLENSTEIN

WXR LOG SPLITTERS

**FASTER
AND
STRONGER**



WALLENSTEIN

FIREBOLT

THE ALL NEW **2x2 SPEED** LOG SPLITTER



FIREFOLT

2X SPEED

Compromise no more between speed or strength. Wallenstein introduces the Firebolt—the first 2x2 speed log splitter, marking the next generation of log splitter that is both faster and stronger.



**30%
FASTER**
VS PREVIOUS WX640
11 SEC
FULL CYCLE

27 TONS
SPLITTING
FORCE
3400 PSI



Featuring a 2-stage regenerative valve for blazing fast speed, coupled with a heavier 2-speed pump for extra power, the Firebolt offers the perfect combination of fast, efficient splitting with added strength when you need it.

Factory tuned, the Firebolt gives you full rated performance out of the box and is backed by our 5-year warranty.

**FACTORY
TUNED
TO RATED
PERFORMANCE**

WXR720

HORIZONTAL

WXR720-L

HORIZONTAL W LIGHT KIT



*shown with optional table

FASTER AND STRONGER

WXR740

HORIZONTAL & VERTICAL

WXR740-L

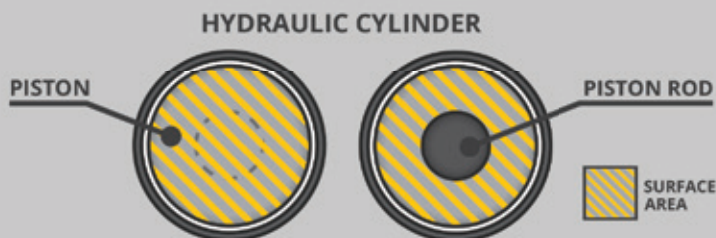
HORIZONTAL & VERTICAL W LIGHT KIT



*shown with optional shelf

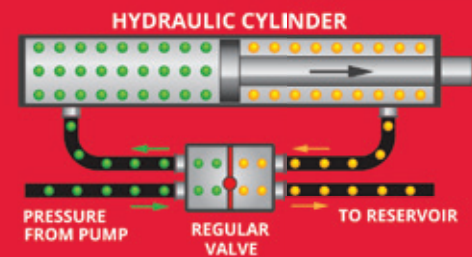
REGENERATIVE VALVE TECHNOLOGY

Unlike normal valves, the regenerative valve pressurizes both sides of the cylinder at the same time. Since only one side has a rod, the other side has more surface area, and therefore more force. Even though both sides have equal pressure, they do not have equal force. Therefore, the rod moves outward.

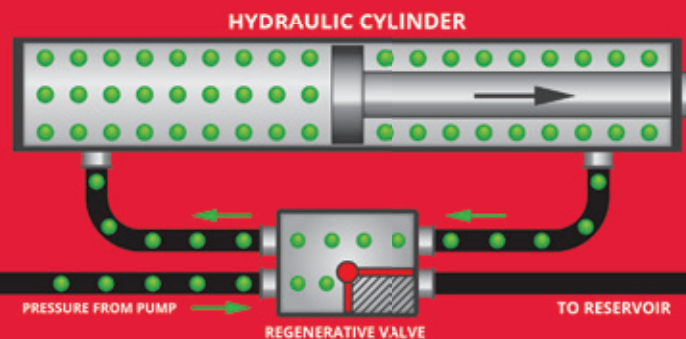


Since the entire volume of the cylinder is already full and pressurized, the pump only has to contribute the missing volume of the rod. This increases the cycle speed and thus, productivity.

REGULAR VALVE OPERATION



REGENERATIVE VALVE OPERATION



PRESSURE



NO PRESSURE

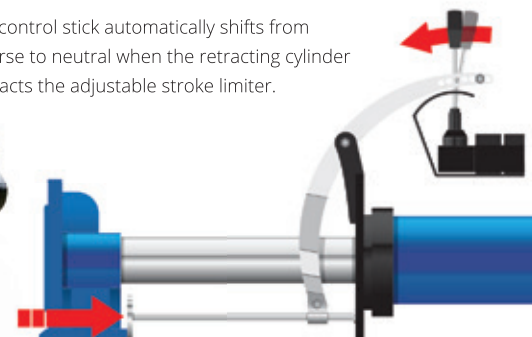
OPTIONS

STROKE LIMITER

Maximize productivity when splitting shorter pieces by automatically stopping the cylinder from fully returning to the home position. This can almost cut your cycle time in half.



The control stick automatically shifts from reverse to neutral when the retracting cylinder contacts the adjustable stroke limiter.





All Wallenstein products are covered under a 5-year warranty for regular consumer use.



All Wallenstein products are Made in Canada and offer the highest quality craftsmanship.

SPECIFICATIONS

WXR720

WXR740

Mounting	Trailer Mounted	
Engine Model	Honda GX200 - 196 CC	
Cylinder Diameter	4.5" / 114.3mm	
Cylinder Stroke	24" / 609.6mm	
Splitting Force	27 Ton / Tonne	
Valve Type	4 - Pos. Spring Loaded To Neutral	
Hydraulic Pump Type & Flow	2 Stage - 13 GPM / 49 IPM	
Bed Height	27" / 68.6 cm	
Tire Size & Type	4.80 - 8 LRB SportTrail 4 on 4" - Highway	
Safety Chains	Standard	
Ball Hitch Size	2.0"	
Auto Return to Neutral	Yes	
Average Cycle Time / Full Cycle Time	5.35 secs / 11 secs	
Options	#W4211 Clamp On Shelf Extension	
	#W4213 Stroke Limiter	
	#4140 - 4 Way Wedge	#4130 - 4 Way Wedge
	#W4212 Folding Shelf	

Splitter Orientation	Horizontal	Horizontal / Vertical
Weight	460 lbs / 209 kg	570 lbs / 258.5 kg
Dimensions (L x W x H) in	76 x 40 x 44	83 x 48 x 44
Dimensions (L x W x H) cm	193 x 101 x 113	210 x 120 x 113
Wedge Height	10" / 25 cm	9" / 22 cm

OPTIONS

Save time and avoid extra bending and lifting by keeping the pieces within reach using the available folding shelf or clamp-on shelf.

FOLDING SHELF

WXR 720 Model

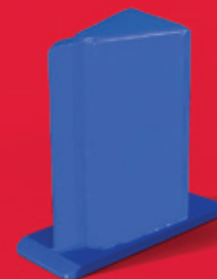
CLAMP-ON SHELF

WXR 720 & 740 Models



HONDA GX200

Equipped with a reliable Honda GX gasoline powered engine



WIDE WEDGE

Forces log apart for faster splitting



DIRECT PRESSURE

Full hydraulic force is applied inline with log



PICK YOUR COLOUR

Available in Blue, Red, Green and Orange

WALLENSTEIN

Manufactured by
EMB MFG Inc.
1-877-695-9283

4144 Boomer Line,
St. Clements, ON N0B 2M0
Email: sales@embmfg.com

Tel: (519) 699-9283
Fax: (519) 699-4146
wallensteinequipment.com