

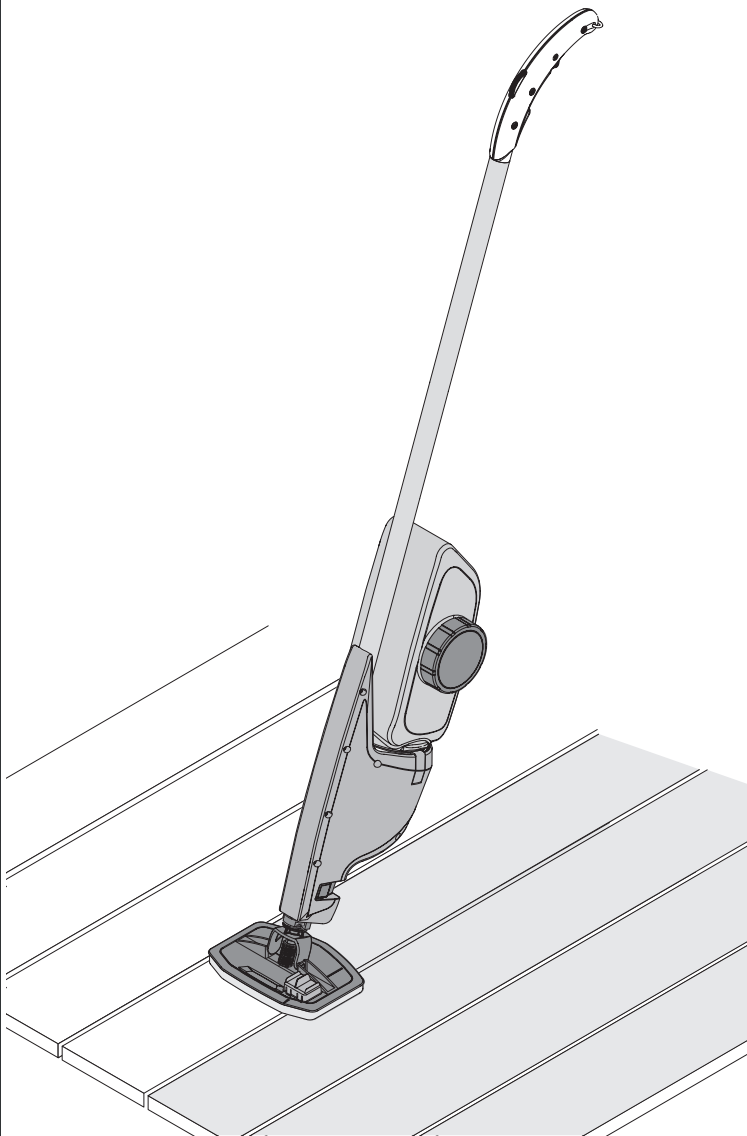
WAGNER

2 Jahre
Garantie

2 years
Guarantee

2 ans de
garantie

2 jaar
garantie

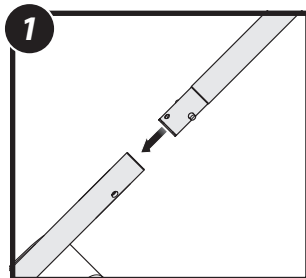


Renuvo

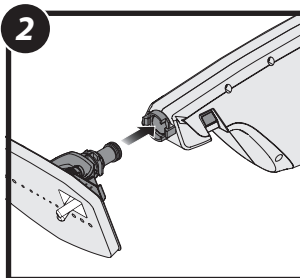
D/GB/F/NL



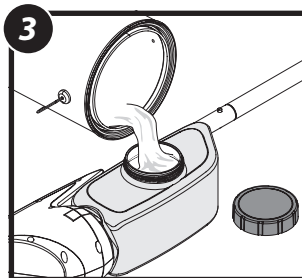
Quick-Start Guide



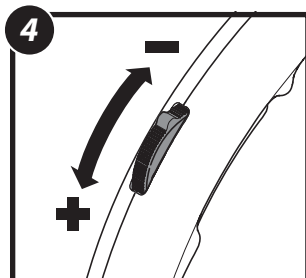
Put together the connection tube



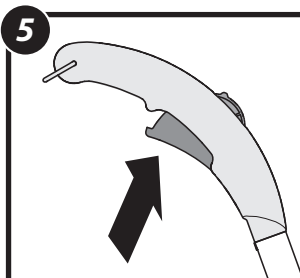
Affix the application pad for either outdoor use (including brush for grooves) or indoor use



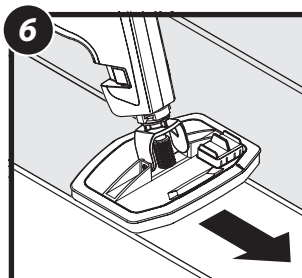
Fill container (max. 1.9 l)



Set the flow rate of the material



Press the trigger, to convey the material



Move Renuvo evenly back and forward

Contents

1. Description/ Scope of delivery	11
2. Technical Data	11
3. Field of application	11
4. Pretreatment of the surface	12
5. Preparing the material	12
6. Assembly	12
7. Start-up	13
8. Adjusting the Material Volume	13
9. Working with Renuvo	14
10. Cleaning	15
11. Correction of Malfunctions	17
12. Spare Parts	18

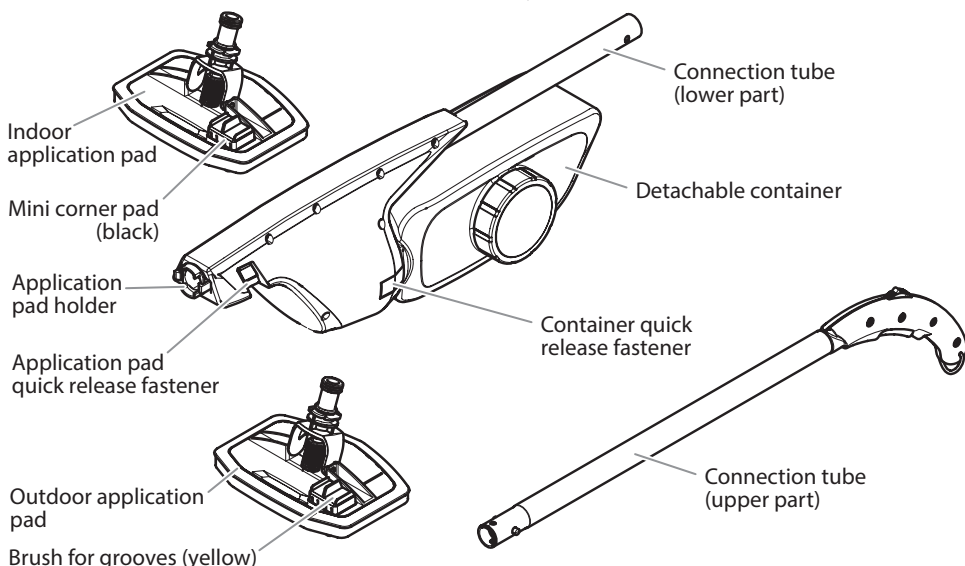
MANY THANKS FOR PLACING YOUR TRUST IN US

We would like to congratulate you on purchasing this brand product from Wagner; we are sure that you will enjoy working with it greatly.

Please read the Operating Manual carefully and observe the safety information before starting the device. Store the Operating Manual in a safe place close to the product in case it needs to be used by someone else.

We would be happy to be of assistance if you have any questions, suggestions or requests. Please contact us via the phone number included on the back page or via our homepage, www.wagner-group.com/service.

1. Description/ Scope of delivery



2. Technical Data

Technical Data	
Filling quantity of container	1.9 l
Height	approx. 130 cm
Application pad dimensions	approx. 18 x 14 cm
Performance with tank filling	up to 19 m ²

3. Field of application

The system is for processing water-based and solvent-based wood preservatives, paints, oils and materials suitable for floor maintenance. **Flammable materials marked by a flame icon (🔥) may not be used.** Applications other than those described in the operating manual are not permitted.

4. Pretreatment of the surface

- Clean the surface thoroughly (if outdoors, with a high-pressure cleaner, for example) and allow it to dry before you begin.
- Remove any cracked and blistered old coats of paint that no longer offer a sound base.
- Sand down sound surfaces as well (e.g. scouring pad).



If you are working on a raised terrace, the material might drip down to the ground (e.g. through gaps between the boards). Cover any surfaces or objects that are underneath.

5. Preparing the material

- Observe all information provided by the manufacturer of the material.
- Note down the most important information about the material you are using (e.g. brand and colour tone) so that you can use the same material for future work.

6. Assembly



Regardless of how your Renuvo was packaged, some of the assembly steps described below can be necessary.

- Hold the lower connection tube (fig. 1, c) vertically and remove the adhesive strips that seal the tube.

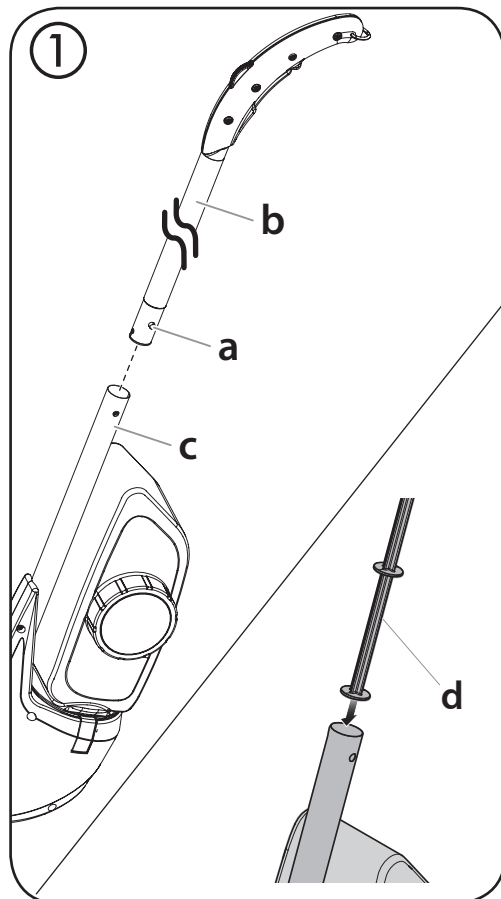


You will find a rod inside the lower connection tube (d). If it falls out, put it back inside the tube with the wide side at the bottom.



The holes on the side of the lower connection tube vary in size. Turn the upper connection tube so that the pins match the respective holes.

- Press down the pins (fig. 1, a) and push the upper connection tube (b) into the lower connection tube (c).
- Make sure that the pins click audibly into place.



- Keep the red quick release fastener (fig. 2, a) depressed and insert the application pad into the holder. Release the quick release fastener and pull lightly on the application pad to check that it is engaged in place.

7. Start-up

i

If necessary cover floors and furniture in the immediate vicinity to where you are working to protect against splashing.

- If you are coating a smooth surface without grooves outside, pull the groove brush out of the outdoor application pad, turn it round and attach it. (Fig. 3)
- Place the device on to a piece of masking material with the container opening upwards. (Fig. 4) Unscrew the lid on the container. Fill the container to a maximum of 1.9 l. Screw the lid back on tight.

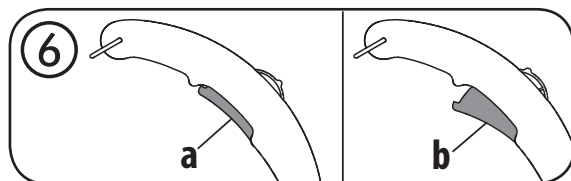
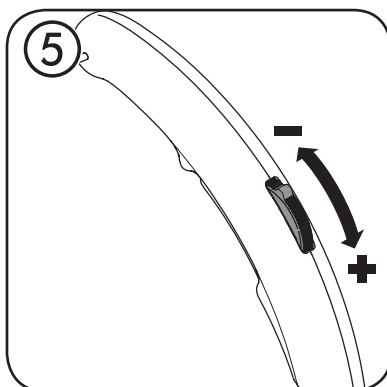
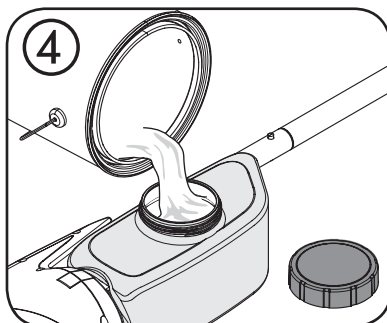
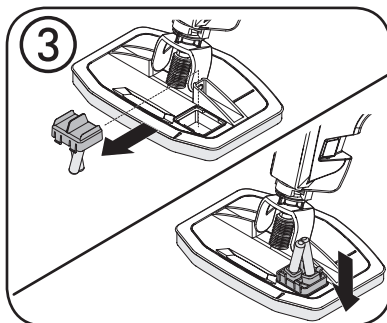
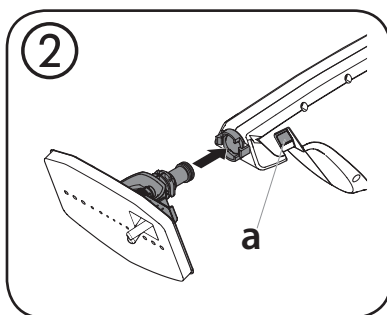
8. Adjusting the Material Volume

Material flow limiter (fig. 5):

- Push the limiter up to reduce the material flow (recommended for thin materials).
- Push the limiter down to increase the material flow (recommended for thick materials).

Trigger:

- Press the trigger to have the material flow into the application pad. (Fig. 6, a)
- Release the trigger to interrupt the material flow. (Fig. 6, b)



9. Working with Renuvo

General

- Press the trigger to have the material flow into the application pad.
- Place the application pad flat on the ground and move it backwards and forwards by applying only slight pressure so that the material is spread evenly.
- Always end a stroke with a forwards movement to avoid stripes.
- Press the trigger if you need more material. But make sure that the application pad does not become soaked in the material.
- For best results, the application pad should be evenly supplied with the material, so that the pad is not too wet, but also not too dry.



You might have to apply a second layer to attain the required surface quality.

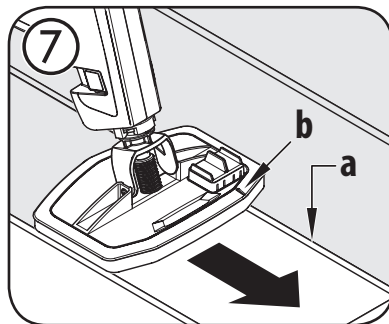
- Always complete a stroke before taking a break. This will avoid any noticeable differences in structure.
- If taking a longer break, put the application pad in a plastic bag in order to prevent it from drying out.



The application pad functions similarly to a sponge. Benefit from this just before finishing your work by using up the material in the application pad.

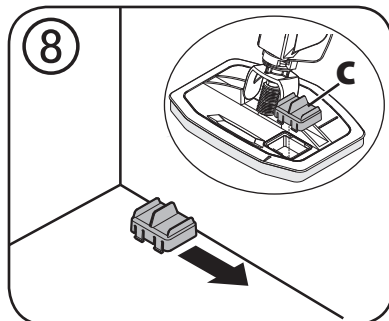
Outdoors

- Adjust the marking (fig. 7, b) on the top of the application pad to the groove (a) in the wood floor. This ensures that the inside of the groove will also be coated by the groove brush.
- Always begin on the left side of the surface when you are using the application pad with the groove brush.



Indoors

- Apply a test coat to a concealed area (e.g. corner of the room).
- Wipe away any excess oil after about 15 minutes with a cotton cloth.
- Use the detachable mini corner pad (fig. 8, c) to distribute the material evenly on corners and edges.



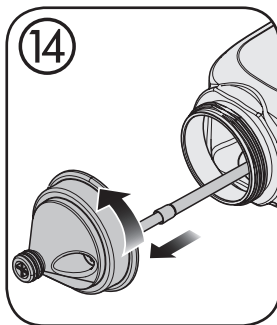
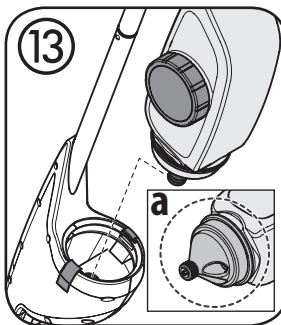
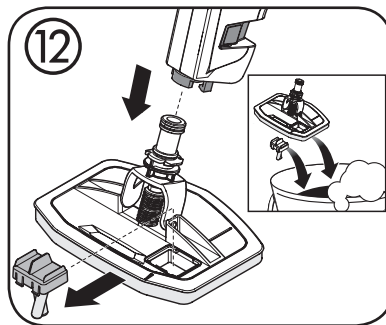
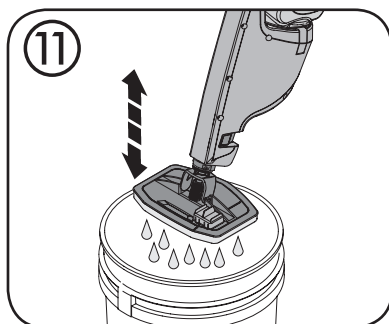
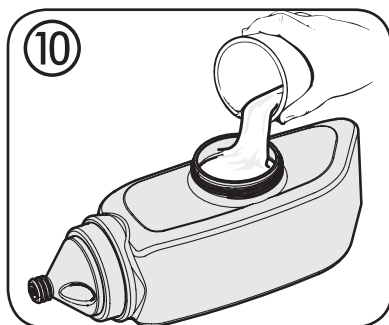
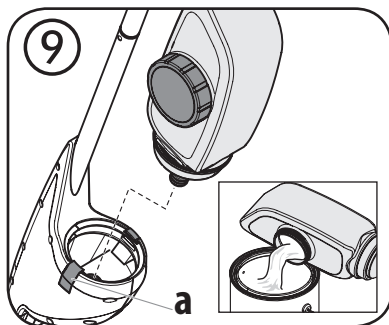
10. Cleaning

Use a cleaning agent suitable for the material (observe any information provided by the manufacturer of the material). **If using solvent-based materials, use turpentine substitute or a similar material for cleaning. Flammable materials marked by a flame icon (🔥) may not be used. Do not immerse the application pad or components in cleaning agents, but rinse them instead.**

i

When using water-based materials, we recommend cleaning with warm water and detergent.

- Press the red quick release fastener (fig. 9, a) to detach the container. Unscrew the lid and pour any leftover material into the original container.
- Fill the container with a suitable cleaning agent. (Fig. 10)
- Re-insert the container. Make sure that it engages audibly.
- Hold Renuvo over an empty bucket.
- Keep the trigger depressed and move the device gently to and fro until the container is empty. (Fig. 11)
- Slight movements cause any leftover material to be easily removed from the Renuvo.
- Remove the application pad and groove brush and clean all parts thoroughly. (Fig. 12)
- Remove the container and rinse it thoroughly. (Fig. 13) Pay special attention to the area around the valve when cleaning. (Fig. 13, a)
- Unscrew the cap on the container. (Fig. 14)



- Pull out the tube (fig. 15, a) and rinse it well (you do not have to take the tube apart to do this).
- Using a soft brush and detergent, wipe away and remains of the material from the valve (fig. 16, b).

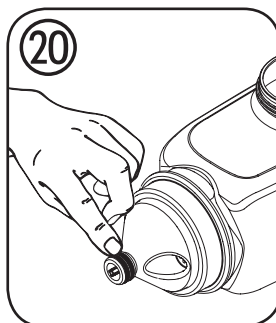
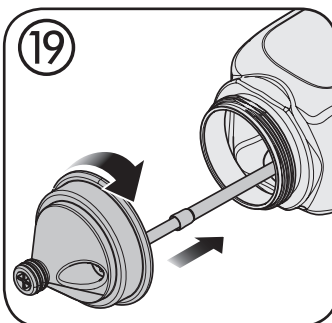
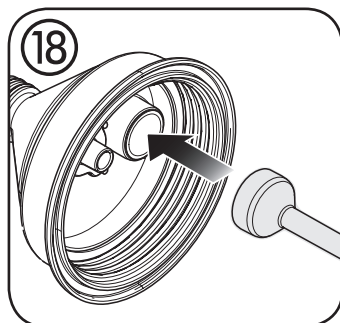
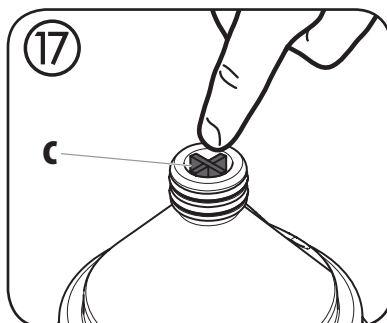
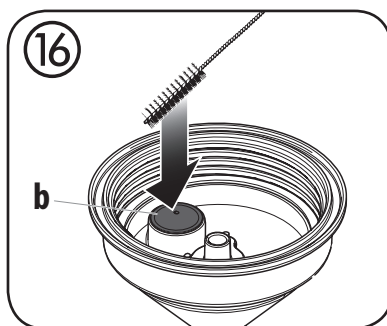
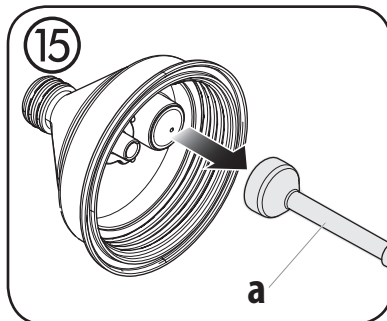
Important: Do not remove the valve for cleaning. If the valve is incorrectly re-attached, the material cannot flow out of the container.

- Allow the cleaning agent to flow through the valve, pressing the cross-shaped valve button (fig. 17, c).
- Put the black tube back on the valve (fig. 18).
- Wipe the inside of the container cap with a cloth.
- Screw the container cap back on the container, tightening it by hand. (Fig. 19).
- Lubricate the O rings with a thin layer of lubricant. (Fig. 20)



Allow the container to dry completely before storing it away.

- Re-insert the container.



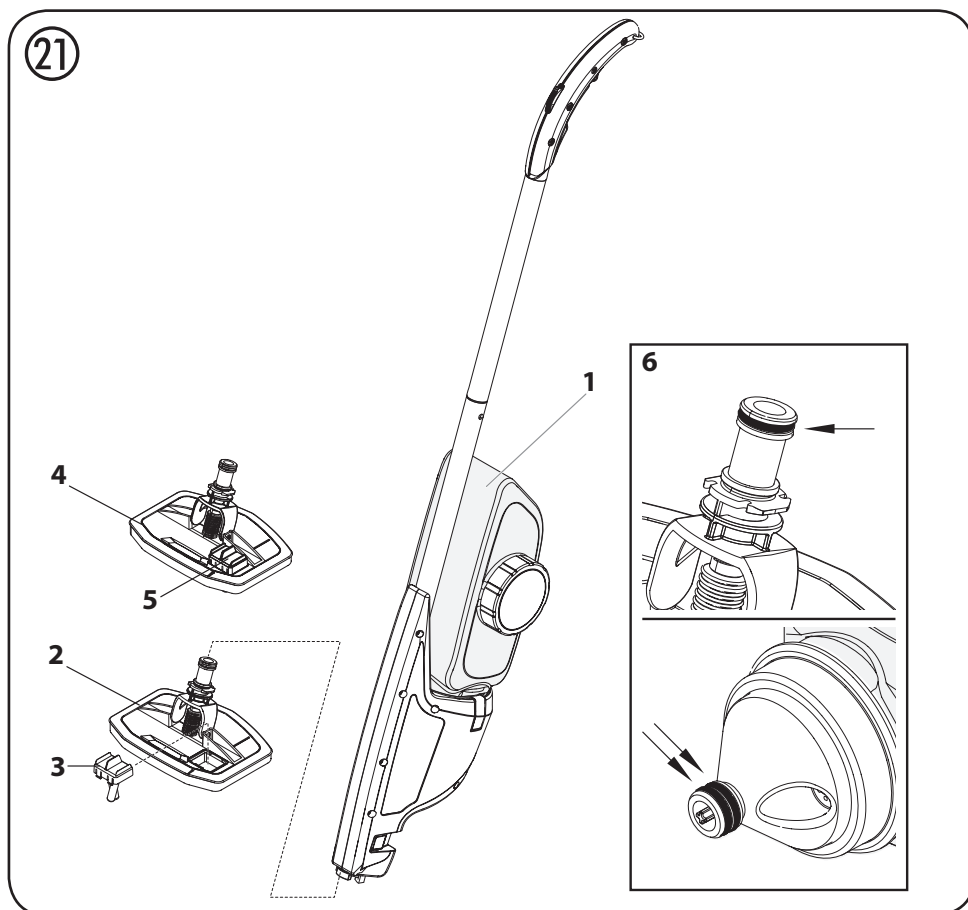
11. Correction of Malfunctions

Problem	Cause	Remedy
A. Not enough material is coming out	<ul style="list-style-type: none"> • The material limiter is set to the upper position • Container empty • Trigger is not pressed very often. • Container not inserted properly • Remains of material around the container valve • Container valve blocked • Material too thick 	<ul style="list-style-type: none"> → Push the limiter down → Refill container → Press the trigger more frequently/for longer periods → Insert properly → Clean (see fig. 13, a) → Clean (see fig. 16 and 17) → Dilute according to manufacturer's instructions
B. Too much material is coming out	<ul style="list-style-type: none"> • Material limiter is set to the lower position • Trigger is pressed too frequently. 	<ul style="list-style-type: none"> → Push the limiter up → Press trigger less frequently/for shorter periods
C. No material comes out at all	<ul style="list-style-type: none"> • Tube loose in container or blocked • Not enough material in the container 	<ul style="list-style-type: none"> → Secure tube or clean (see fig. 15) → Refill container
D. Application of material does not cover surface (stripy)	<ul style="list-style-type: none"> • Not enough material on the application pad • Application pad and/or groove brush damaged 	<ul style="list-style-type: none"> → See solutions suggested in section A → Replace
E. Renuvo leaks	<ul style="list-style-type: none"> • Container not inserted properly • Application pad not mounted correctly • Remains of material around the container valve 	<ul style="list-style-type: none"> → Insert properly → Mount application pad securely → Clean (see fig. 13, a)

12. Spare Parts

Spare Parts List (fig. 21)

Pos.	Designation	Order No.
1	Container	2348 333
2	Outdoor application pad (incl pos. 3)	2348 334
3	Brush for grooves	2348 580
4	Indoor application pad (incl pos. 5)	2348 335
5	Mini corner pad	2350 229
6	O ring set (one O ring for the application pad and two O rings for the container)	2348 329
	Lubricating grease (no fig.)	2315 539



Important Note regarding Product Liability!

Using other accessories and spare parts can lead to partial or total loss of liability and guarantee claims. With original WAGNER accessories and spare parts, you have the guarantee that all safety regulations are fulfilled.

2 years guarantee

The guarantee runs for two years, counting from the date of sale (sales slip). It covers and is restricted to free-of-charge rectification of faults which are demonstrably attributable to the use of faulty materials in manufacture, or assembly errors; or free-of-charge replacement of the defective parts. The guarantee does not cover incorrect use or commissioning or fitting or repair work which is not stated in our operating instructions. Wearing parts are also excluded from the guarantee. The guarantee excludes commercial use. We expressly reserve the right to fulfil the guarantee. The guarantee expires if the tool is opened up by persons other than WAGNER service personnel. Transport damage, maintenance work and loss and damage due to faulty maintenance work are not covered by the guarantee. Under any guarantee claim, there must be proof of purchase of the tool through submission of the original receipt. Wherever legally possible, we exclude all liability for injury, damage or consequential loss, especially if the tool has been used for a purpose other than that stated in the operating instructions, commissioned or repaired other than in accordance with our operating instructions or if repairs are performed by someone who is unqualified. We reserve the right to perform any repairs in excess of those stated in our operating instructions. In case of guarantee or repair, please refer to your point of sale.