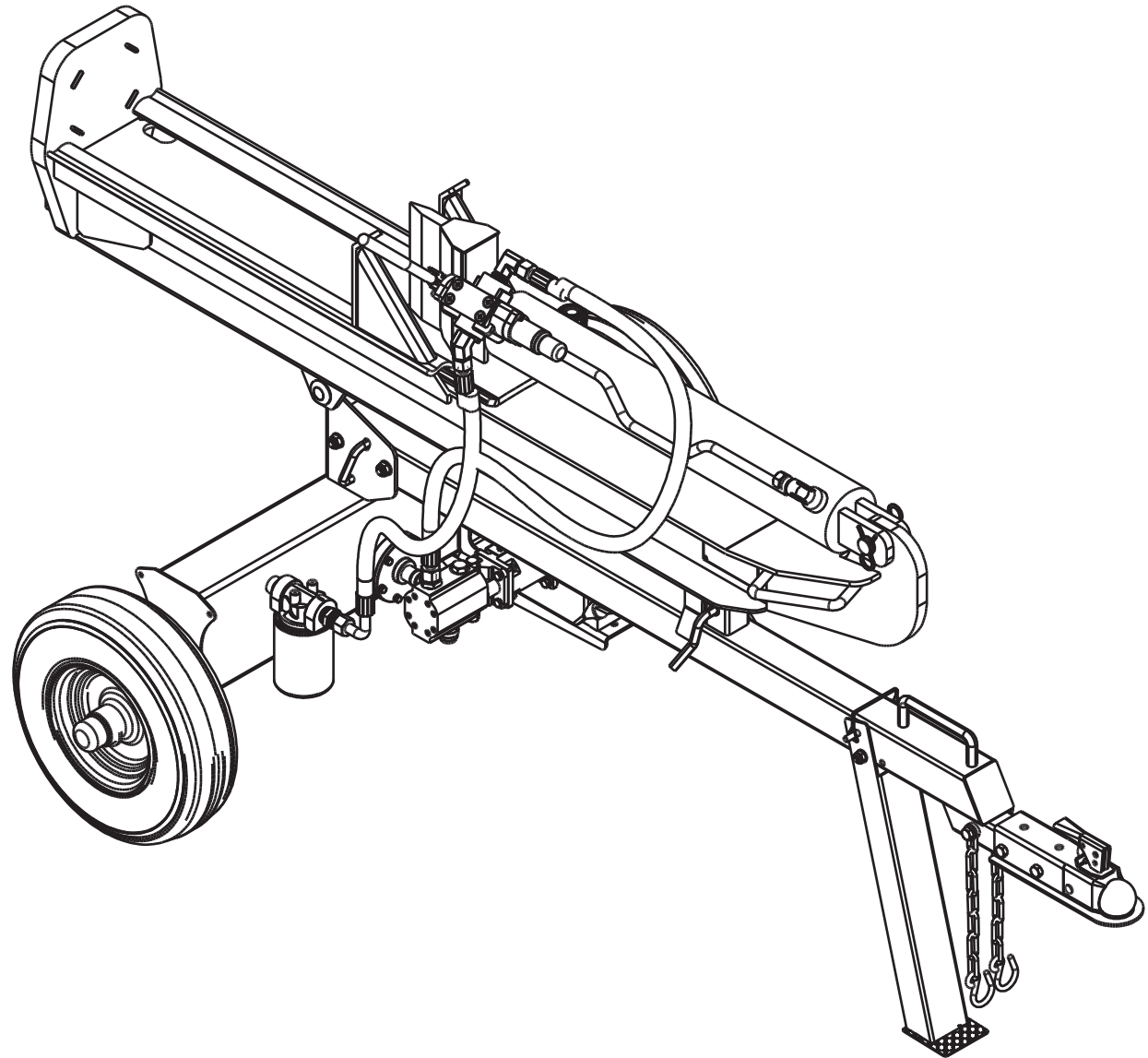
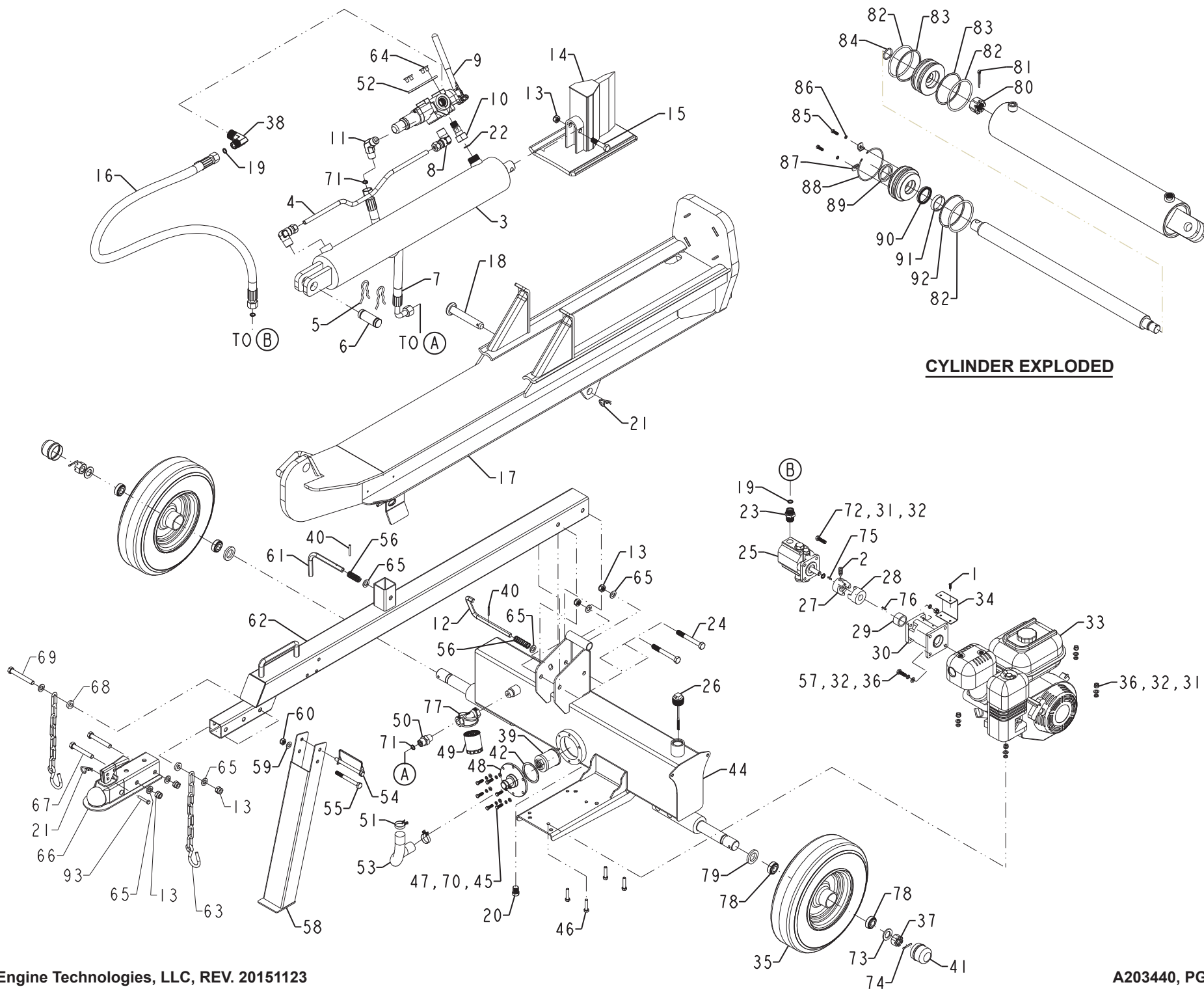
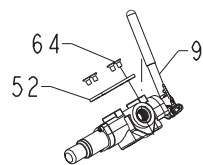




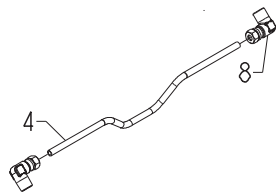
ILLUSTRATED PARTS BOOK
25 Ton Log Splitter
SLS20825



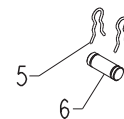




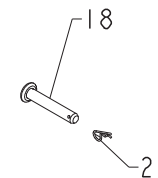
KIT A
CONTROL VALVE
A203324



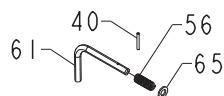
KIT B
METAL HYDRAULIC HOSE
A203325



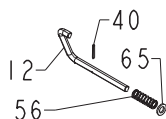
KIT C
PIN
A203326



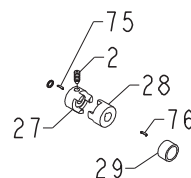
KIT D
PIVOT PIN
A203327



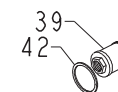
KIT E
FRONT PIN
A203328



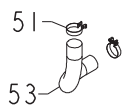
KIT F
REAR PIN
A203329



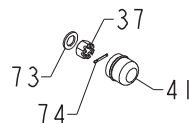
KIT G
COUPLER ASSEMBLY
A203330



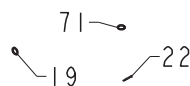
KIT H
INNER OIL FILTER
A203331



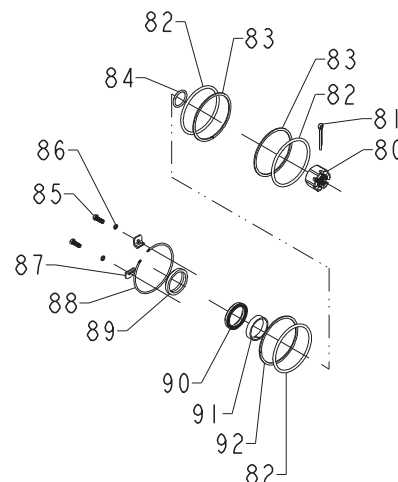
KIT I
OIL PIPE
A203332



KIT J
WHEEL RETAINING
A203333



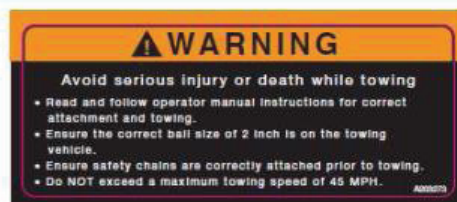
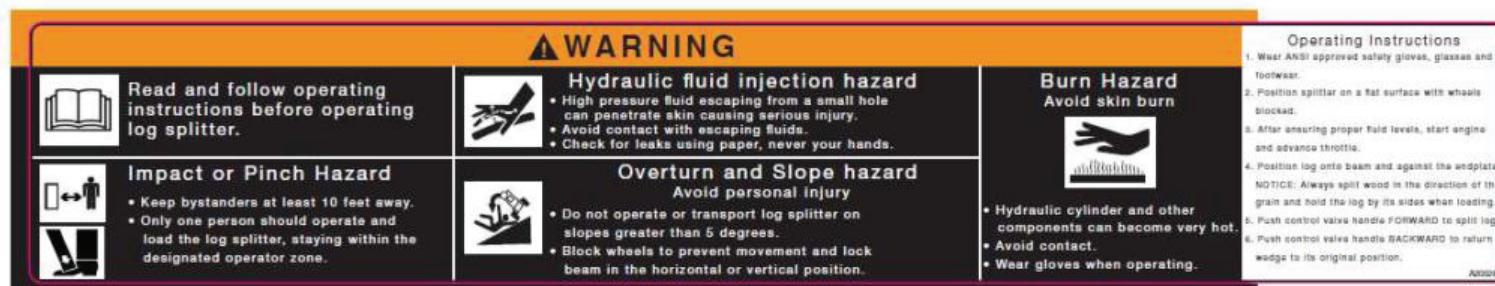
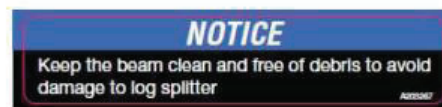
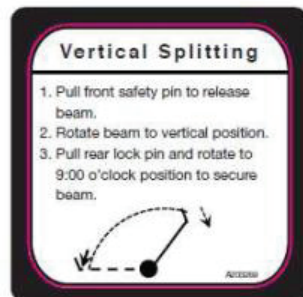
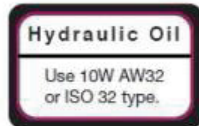
KIT K
O-RING
A203334



KIT L
CYLINDER REBUILD
A203335



KIT N
TOW HITCH PINS
A203446



KIT M
WARNING DECALS
A203337

SLS20825 PARTS LIST

Ref#	Part No.	Description	Qty
1		Hex Bolt M5 x 0.8 x 10mm, Zinc, Grade 8.8	4
2	Kit G	Inner Hex Cone Point Set Screw M6 x 1.0 x 10mm, Black Oxide, Grade 4.8	1
3	A203441	Cylinder, Red	1
4	Kit B	Metal Hydraulic Tube	1
5	Kit C	Retaining Pin Ø5mm	2
6	Kit C	Cylinder Pin	1
7	A203301	Hydraulic Hose (Valve to External Filter)	1
8	Kit B	Compression Elbow	2
9	Kit A	One-Way Single Handle Control Valve	1
10	A203302	Combination Connector	1
11	A203303	130° Elbow	1
12	Kit F	Rear Pin	1
13		Nylon Lock Nut M12 x 1.75, Zinc, Grade 4.8	6
14	A203304	Wedge	1
15		Hex Bolt M12 x 1.75 x 65mm, Zinc, Grade 8.8	1
16	A203305	Hydraulic Hose (Valve to Pump)	1
17	A203306	Beam Assembly	1
18	Kit D	Pivot Pin	1
19	Kit K	O Ring Ø11.2 x 2.4mm	3
20	A203307	Oil Plug	1
21	Kit D & N	Cotter Pin Ø12mm	2
22	Kit K	O Ring Ø15.2 x 2.4mm	1
23	A203308	Pump Outlet Connector	1
24		Hex Bolt M12 x 1.75 x 100mm, Zinc, Grade 8.8	2
25	A203309	Gear Pump	1
26	A203310	Oil Cap	1
27	Kit G	Gear Pump Coupler	1
28	Kit G	Engine Coupler	1
29	Kit G	Engine Bushing	1
30	A203311	Gear Pump Stand	1
31		Nylon Lock Nut M8 x 1.25, Zinc, Grade 4.8	8
32		Lock Washer M8	12
33	See Note A	Engine 208cc Horizontal Shaft	1
34	A203312	Coupler Cover	1
35	A203313	Wheel Assembly	2
36		Flat Washer M8	8
37	Kit J	Thin Hex Slotted Nut M20	2
38	A203314	90° Elbow	1
39	Kit H	Inner Oil Filter	1
40	Kit E & F	Spring Pin Ø3 x 30mm	2
41	Kit J	Axle Cap	2
42	Kit H	Rubber Gasket	1
43	Kit G	Wire Snap Ring For Shaft	1
44	A203442	Oil Tank, Red, with (2) A203336 50 x 300mm Reflectors	1
45		Flat Washer M6	6
46		Hex Bolt M8 x 1.25 x 40mm, Zinc, Grade 8.8	4
47		Hex Bolt M6 x 1.0 x 20mm, Zinc, Grade 8.8	6

Ref#	Part No.	Description	Qty
48	A203316	Filter Fixed Plate	1
49	A203317	Outer Oil Filter	1
50	A203318	Connector	1
51	Kit I	Hose Clamp	2
52	Kit A	Plate	1
53	Kit I	Oil Pipe	1
54	A203319	Lock Pin	1
55		Hex Bolt M10 x 1.5 x 95mm, Zinc, Grade 8.8	1
56	Kit E & F	Spring	2
57		Hex Bolt M8 x 1.25 x 25mm, Zinc, Grade 8.8	4
58	A203320	Front Support Leg	1
59		Flat Washer M10	1
60		Nylon Lock Nut M10 x 1.5, Zinc, Grade 4.8	1
61	Kit E	Front Pin	1
62	A203321	Tow Bar 2" Ball Diameter	1
63	A203322	Chain Assembly	2
64	Kit A	Cross Screw M8 x 1.25 x 10mm, Zinc, Grade 4.8	4
65	Kit E & F	Flat Washer M12	8
66	A203323	Coupler	1
67		Hex Bolt M12 x 1.75 x 80mm, Zinc, Grade 8.8	2
68		Flat Washer M12 x 32 x 4mm Thick	2
69		Hex Bolt M12 x 1.75 x 90mm, Zinc, Grade 8.8	1
70		Lock Washer M6	6
71	Kit K	O Ring Ø17 x 2.5mm	2
72		Hex Bolt M8 x 1.25 x 30mm, Zinc, Grade 8.8	4
73	Kit J	Flat Washer M20	2
74	Kit J	Cotter Pin Ø4 x 36mm	2
75	Kit G	Gear Pump Key 3.2 x 3.2 x 25mm C1045 Steel	1
76	Kit G	Engine Key 4.78 x 4.78 x 44.5mm C1045 Steel	1
77	A203338	Filter Housing	1
78	A203339	Tapered Roller Bearing	4
79	A203340	Oil Seal	2
80	Kit L	Slotted Nut	1
81	Kit L	Cotter Pin	1
82	Kit L	O Ring Ø95 x 5.3mm	3
83	Kit L	Snap Ring	2
84	Kit L	O Ring Ø30 x 3.55mm	1
85	Kit L	Hex Bolt	1
86	Kit L	Lock Washer	1
87	Kit L	Retaining Bracket	1
88	Kit L	Snap Ring	1
89	Kit L	Dust Ring	1
90	Kit L	Seal Ring	1
91	Kit L	Guide Ring	1
92	Kit L	Snap Ring	1
93	Kit N	Tow Hitch Pin	1

KITS

Kit#	Part No.	Description	Ref#
A	A203324	Control Valve	9,52,64
B	A203325	Metal Hydraulic Hose	4,8
C	A203326	Pin	5,6
D	A203327	Pivot Pin	18,21
E	A203328	Front Pin	40,56,61,65
F	A203329	Rear Pin	12,40,56,65
G	A203330	Coupler Assembly	2,27,28,29,43,75,76

Kit#	Part No.	Description	Ref#
H	A203331	Inner Oil Filter	39,42
I	A203332	Oil Pipe	51,53
J	A203333	Wheel Retaining	37,41,73,74
K	A203334	O-Ring	19,22,71
L	A203335	Cylinder Rebuild	80-92
M	A203337	Warning Decals	/
N	A203446	Tow Hitch Pins	21, 93

Note A: Consult the accompanying engine manual or contact our service department at 1-800-558-5402 for assistance.