

Parts Manual

Mfg. No: 1696447-00

Turbo, 48" Fabricated Mower Deck

Model Components	Page
Housing Group.....	4
Turbo Mounting Group.....	6
Torque Specification Chart.....	8

Not For
Reproduction

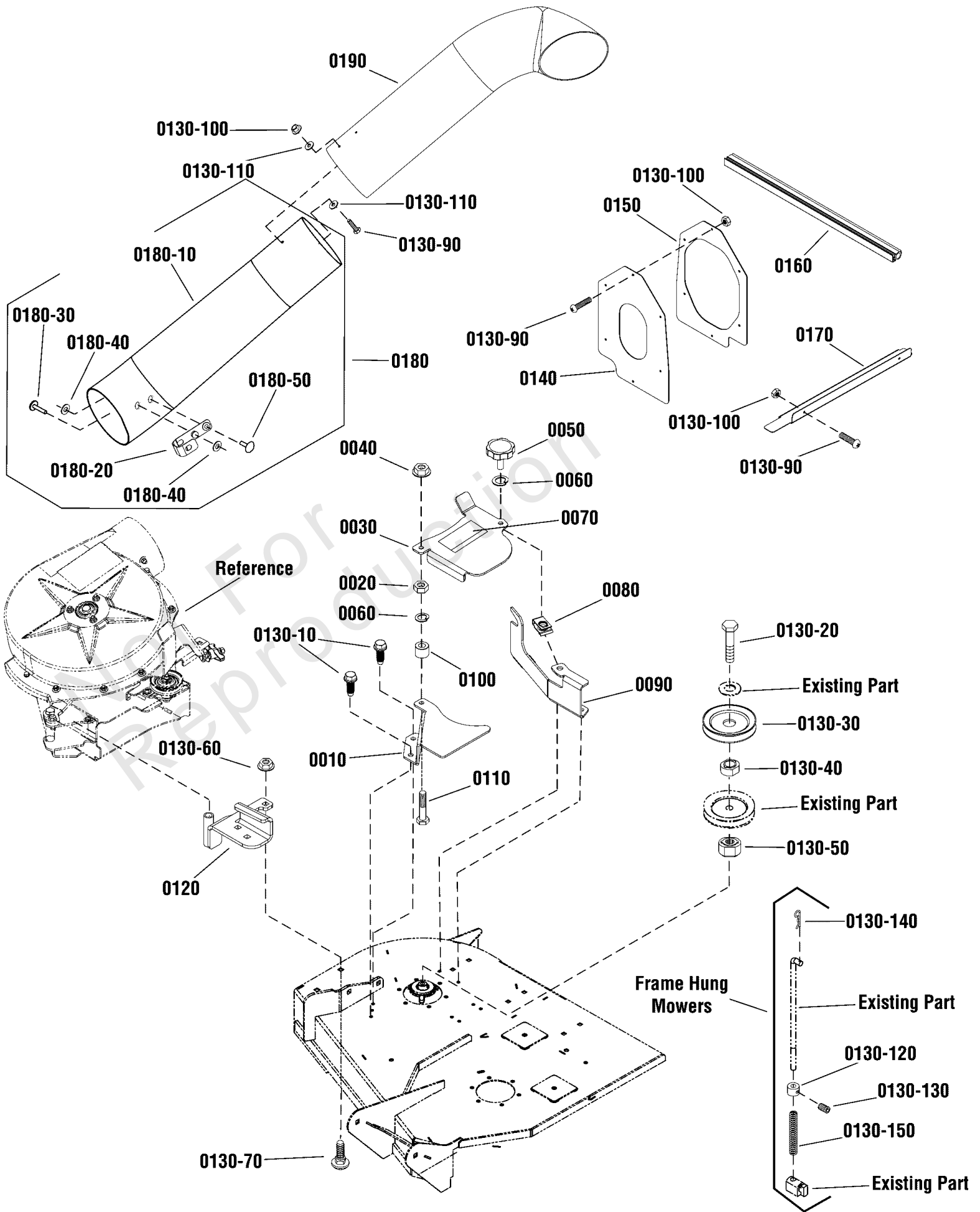
Housing Group

REF NO	PART NO	QTY	DESCRIPTION
0010	703406	1	CAPSCREW, 3/8-16 X 1 1/2
0020	703590	8	WASHER, 3/8
0030	2154534SM	1	PULLEY, Idler
0040	1933263SM	1	WASHER, 7/16
0050	1960251SM	3	NUT, Hex Centerlock, 3/8-16
0060	1674669SM	1	SPACER, .39 X 5/8 X 1.15
0070	705983	1	IDLER ARM ASSEMBLY
0070-10	1676148SM	2	BUSHING
0070-20	703907	1	FITTING, Grease, 1/4
0080	703333	1	NUT, Hex Flange, 3/8-16
0090	1960379SM	1	NUT, Hex Lock, 1/2-13
0100	1931333SM	11	BOLT, Carriage, 5/16-18 X 3/4
0110	704289	1	CAPSCREW, Hex Head, 3/8-16 X 1 3/4
0120	1721134SM	1	PULLEY, 3" OD
0130	705984	1	BRACKET, Pulley
0140	703115	5	NUT, Flange Nylock, 5/16-18
0150	703873	1	CAPSCREW, Hex Head, 3/8-16 X 2 1/2
0160	704421	1	SCREW, Round Head, 5/16 X 2 1/4
0170	1716853SM	1	SPRING, Extension
0180	705985	1	ADAPTER, 48
0190	705986	1	BRACKET, Support
0200	703819	4	CAPSCREW, Hex Head, 1/4-20 X 7/8
0210	705987	1	DEFLECTOR, 48
0220	703338	2	CAPSCREW, Hex Head, 1/4-20 X 5/8
0230	2860403SM	1	KEY, Woodruff, 3/16
0240	1736092SM	1	PULLEY, 2 3/4
0250	1960619SM	2	SCREW, Set, 5/16-18 x 5/16
0260	1917372SM	1	NUT, Hex, 5/16-18
0270	703116	1	LOCKWASHER, Split, 5/16
0280	1924874SM	1	WASHER, 5/16
0290	1678435SM	1	BELT STOP
0300	1738101AYP	1	WELD, PLATE & BAR ASSEMBLY
0310	704130	1	SCREW, Hex Head Taptite, 1/4-20 X 1/2
0320	7091558SM	1	HHCS, 1/2C X3-1/2 YZ
0330	704038	1	SCREW, Hex Flange, 3/8-16 X 1
0340	1706631SM	1	FAN ASSEMBLY
0350	703297	6	RETAINER, 5/16 X 5/8
0360	2108202SM	2	BEARING, Ball
0370	1665982SM	4	RETAINER, Bearing
0380	1930641SM	10	NUT, Hex Flange, 1/4-20
0390	1960728SM	2	SCREW, Hex Washer Head, 1/4 X 3/4
0400	703575	4	BOLT, 1/4-20 x 3/4
0410	1705267SM	1	PLATE, Cover
0420	705997	1	HOUSING, Fan
0430	1700259SM	1	DECAL, Danger
0450	705988	1	V-BELT, 46.24
0460	1927557SM	6	NUT, Hex Flange, 5/16-18
0470	2174561SM	1	PULLEY, 3" OD
0480	1960636SM	1	NUT, Hex, 5/16-18
0490	1709256SM	1	WASHER, Spring, 5/16 x 1 1/4
0500	703065	1	KNOB, Wing, 5/16-18

Turbo Mounting Group

Note: Unless noted otherwise, use the standard torque specifications

Mfg. No: 1696447-00



Turbo Mounting Group

REF NO	PART NO	QTY	DESCRIPTION
0010	705989	1	COVER, Pulley
0020	703465	1	NUT, 5/16-18
0030	705990	1	COVER, Pulley
0040	703115	1	NUT, Flange Nylock, 5/16-18
0050	5101731YP	1	KNOB, Rosette, 5/16-18 X 1
0060	703116	2	WASHER, Lock Split, 5/16
0070	5103184YP	1	DECAL, Warning
0080	1935255SM	1	NUT, Speed, 5/16-18
0090	705991	1	LATCH, Cover
0100	5102581YP	1	SPACER, .33 X .63 X .5
0110	1922127SM	1	SCREW, Hex Head Cap, 5/16-18 x 1 3/4
0120	705992	1	PIVOT, Turbo
--	1758238	1	HARDWARE BAG -(Not a serviceable part, order components separately)
0130-10	703228	2	SCREW, Washer Head Taptite, 5/16-18 X 3/4
0130-20	2827120SM	1	CAPSCREW, Hex Head, 7/16-14 X 2 1/4
0130-30	1713090SM	1	PULLEY, 3 3/4
0130-40	1713623SM	1	HUB, .79 ID 1.50 OD .7 3 LG
0130-50	1738102YP	1	SPACER, Pulley
0130-60	703793	1	NUT, Flange Lock, 3/8-16
0130-70	703815	1	BOLT, Carriage, 3/8-16 X 1
0130-90	1960404SM	9	SCREW, Truss Phillips, #10-24 x 3/4
0130-100	703412	9	NUT, Nylock, #10-24
0130-110	1910531SM	2	WASHER, Rivet
0130-120	1719777SM	1	COLLAR, Set
0130-130	1928721SM	1	SCREW, Set, Square Head
0130-140	703300	1	PIN, Hair, 3/32 x 1 5/8
0130-150	1729277SM	1	SPRING, Compression
0140	1733741SM	1	SEAL, Cover
0150	1732735ASM	1	SEAL, Flange
0160	1733579SM	1	EDGING
0170	1733580ASM	1	PLATE, Deflector
0180	705993	1	ASSEMBLY, Tube Lower
0180-10	-----	1	TUBE, Lower -(Not sold separately, order item 0180)
0180-20	1705063YP	1	SPRING, Clip
0180-30	2810542SM	1	RIVET
0180-40	1910531SM	2	WASHER, Rivet
0180-50	1673320SM	1	RIVET
0190	1732800SM	1	ELBOW, Vacuum

Hardware Identification & Torque Specifications

Torque Specification Chart								
FOR STANDARD METRIC MACHINE HARDWARE (Tolerance ± 20%)								
Property Class	5.6		8.8		10.9		12.9	
	Class 5.6		Class 8.8		Class 10.9		Class 12.9	
Size Of Hardware	in/lbs	Nm.	in/lbs	Nm.	in/lbs	Nm.	in/lbs	Nm.
	ft/lbs		ft/lbs		ft/lbs		ft/lbs	
M3	5.88	.56	13.44	1.28	19.2	1.80	22.92	2.15
M4	13.44	1.28	30.72	2.90	43.44	4.10	52.56	4.95
M5	26.4	2.50	60.96	5.75	5.97	8.10	7.15	9.7
M6	44.64	4.3	7.3	9.9	10.3	14	12.1	16.5
M7	5.2	7.1	12.1	16.5	16.9	23	19.9	27
M8	7.7	10.5	17.7	24	25	34	29	40
M10	15	21	35	48	50	67	59	81
M12	26	36	61	83	86.2	117	103	140
M14	42	58	101	132	136	185	162	220
M16	64	88	147	200	210	285	250	340
M18	89	121	202	275	287	390	346	470
M20	126	171	290	390	405	550	486	660
M22	169	230	390	530	559	745	656	890
M24	217	295	497	375	708	960	840	1140
M27	320	435	733	995	1032	1400	1239	1680
M30	435	590	995	1350	1401	1900	1681	2280
M33	590	800	1349	1830	1902	2580	2278	3090
M36	759	1030	1740	2360	2441	3310	2935	3980
M39	988	1340	2249	3050	3163	4290	3798	5150

Torque Specification Chart						
FOR STANDARD MACHINE HARDWARE (Tolerance ± 20%)						
Hardware Grade	No Marks		SAE Grade 5		SAE Grade 8	
	SAE Grade 2		SAE Grade 5		SAE Grade 8	
Size Of Hardware	in/lbs	Nm.	in/lbs	Nm.	in/lbs	Nm.
	ft/lbs		ft/lbs		ft/lbs	
8-32	19	2.1	30	3.4	41	4.6
8-36	20	2.3	31	3.5	43	4.9
10-24	27	3.1	43	4.9	60	6.8
10-32	31	3.5	49	5.5	68	7.7
1/4-20	66	7.6	8	10.9	12	16.3
1/4-28	76	8.6	10	13.6	14	19.0
5/16-18	11	15.0	17	23.1	25	34.0
5/16-24	12	16.3	19	25.8	29	34.0
3/8-16	20	27.2	30	40.8	45	61.2
3/8-24	23	31.3	35	47.6	50	68.0
7/16-14	30	40.8	50	68.0	70	95.2
7/16-20	35	47.6	55	74.8	80	108.8
1/2-13	50	68.0	75	102.0	110	149.6
1/2-20	55	74.8	90	122.4	120	163.2
9/16-12	65	88.4	110	149.6	150	204.0
9/16-18	75	102.0	120	163.2	170	231.2
5/8-11	90	122.4	150	204.0	220	299.2
5/8-18	100	136	180	244.8	240	326.4
3/4-10	160	217.6	260	353.6	386	525.0
3/4-16	180	244.8	300	408.0	420	571.2
7/8-9	140	190.4	400	544.0	600	816.0
7/8-14	155	210.8	440	598.4	660	897.6
1-8	220	299.2	580	788.8	900	1,244.0
1-12	240	326.4	640	870.4	1,000	1,360.0

The guides and ruler furnished below are designed to help you select the appropriate hardware.



Nut, M8

Thread Diameter (mm)

Inside Diameter (in) Threads per inch

Nut, 1/2-16



Screw, M8- 1.25 x 25

Thread Diameter (mm) Distance between threads (mm) Body Length (mm)

Body Diameter Threads per inch Body Length (in)

Screw, 1/2- 16 x 2



Standard Hardware Sizing

When a washer or nut is identified as 1/2" (M8), this is the *Nominal size*, meaning the *inside diameter* is 1/2 inch (8mm metric thread diameter); if a second number is present it represents the *threads per inch* (distance between threads).

When bolt or capscrew is identified as 1/2 - 16 x 2" (M8 - 1.25 x 50), this means the *Nominal size*, or body diameter is 1/2 inch (8mm metric thread diameter), the second number, 16, represents the *threads per inch*, (*distance between threads*). The final number is the body length of the bolt or screw, 2 inches (50mm).

NOTES

- These torque values are to be used for all hardware excluding: locknuts, self-tapping screws, thread forming screws, sheet metal screws and socket head setscrews.
- Recommended seating torque values for locknuts:
 - for prevailing torque locknuts - use 65% of grade 5 torques.
 - for flange whizlock nuts and screws - use 135% of grade 5 torques.
- Unless otherwise noted on assembly drawings, all torque values must meet this specification.

Common Hardware Types

Hex Head Capscrew



Washer



Carriage Bolt



Hex Nut

Wrench & Fastener Size Guide

1/4" Bolt or Nut Wrench—7/16"	5/16" Bolt or Nut Wrench—1/2"	3/8" Bolt or Nut Wrench—9/16"	7/16" Bolt or Nut Wrench (Bolt)—5/8" Wrench (Nut)—11/16"	1/2" Bolt or Nut Wrench—3/4"
M6 Bolt or Nut Wrench—10mm	M8 Bolt or Nut Wrench—13mm	M10 Bolt or Nut Wrench—17mm	M12 Bolt or Nut Wrench—19mm	M14 Bolt or Nut Wrench—22mm

