



Parts Manual

Mfg. No: 1696869-00
SXDC82, 82V Battery Electric Cultivator



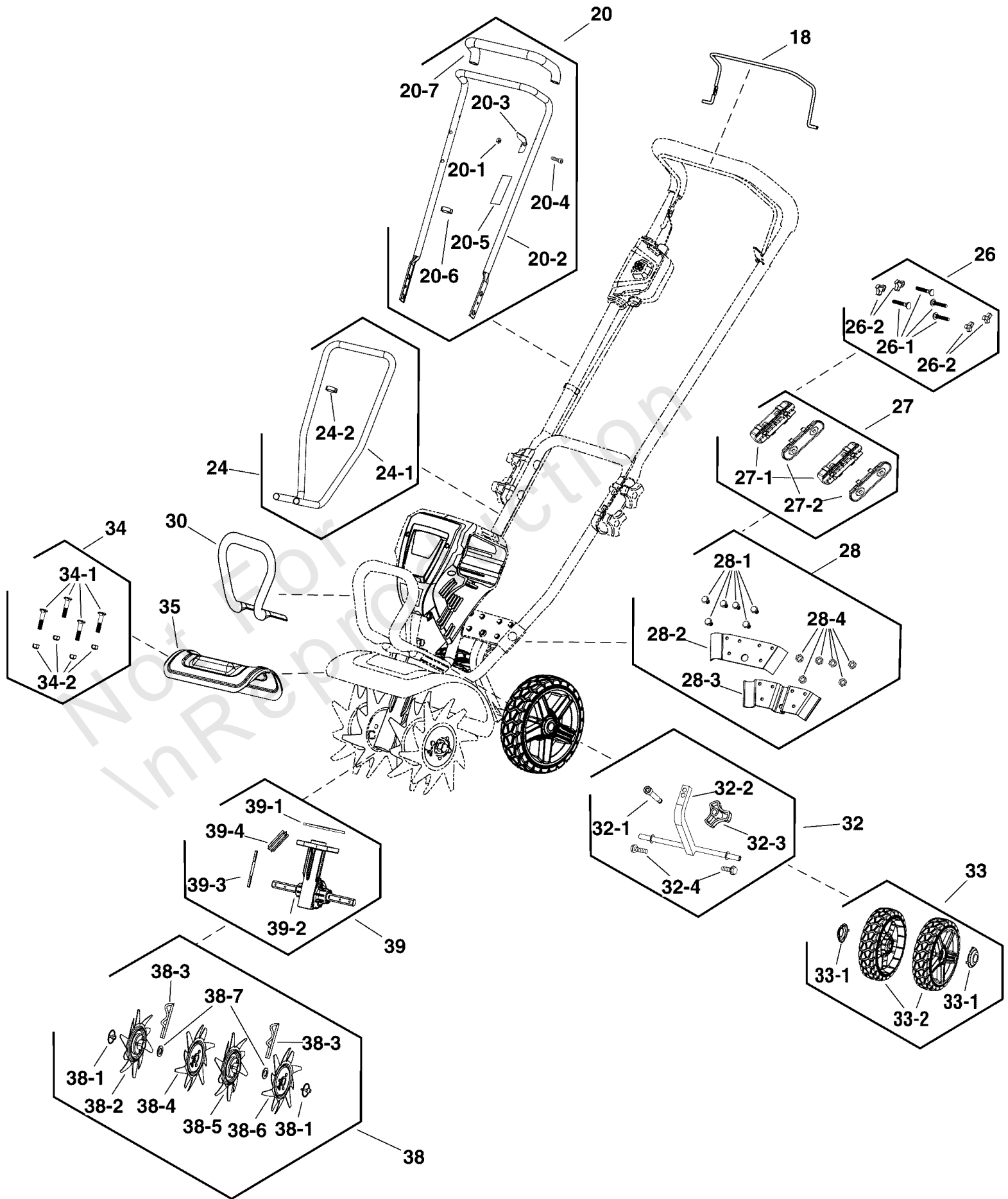
Model Components	Page
Handles & Tine Group.	4
Power Head Group.	8
Torque Specification Chart.	12

Not For
In Reproduction

Handles & Tine Group

Note: Unless noted otherwise, use the standard torque specifications

Mfg. No: 1696869-00



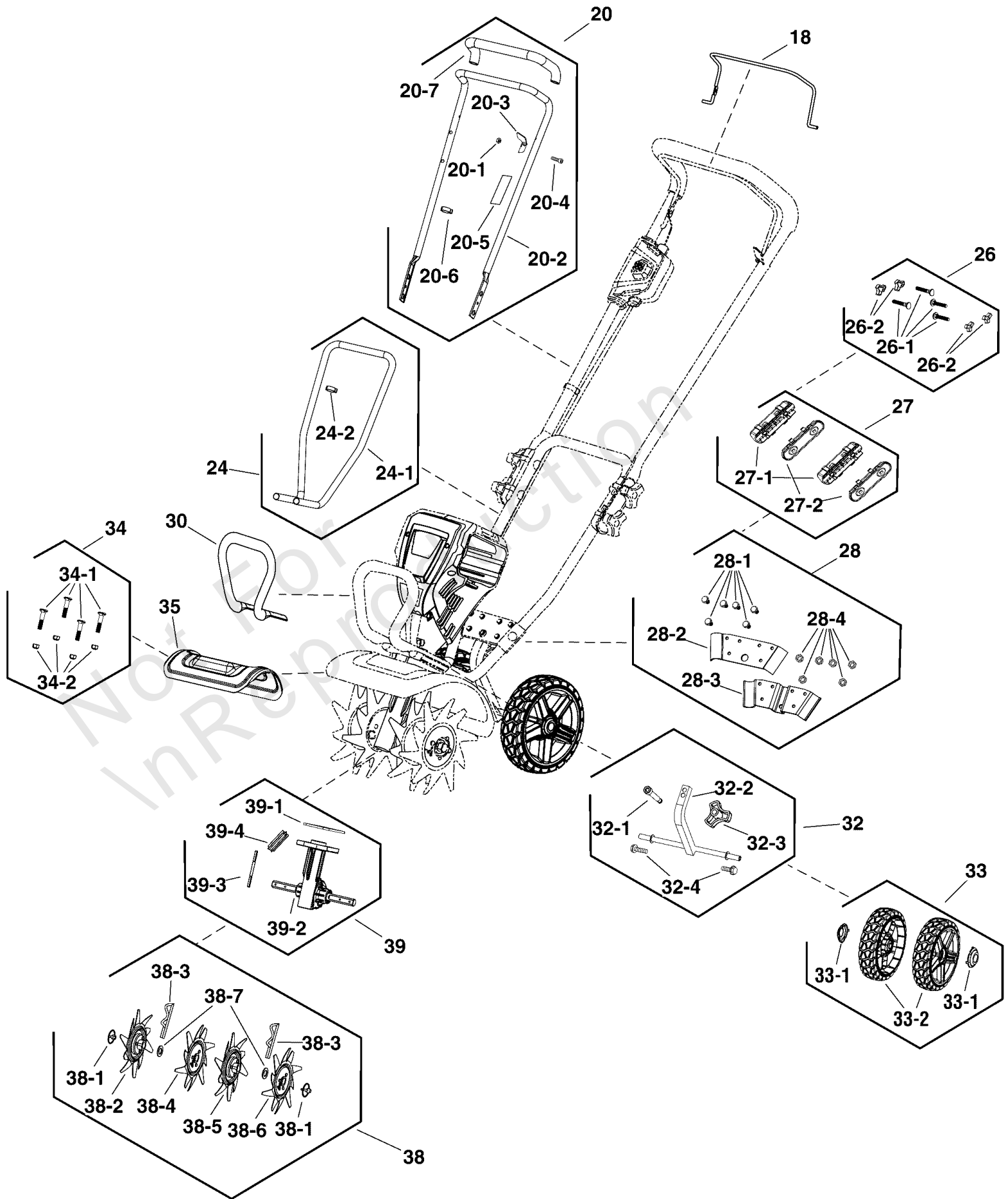
Handles & Tine Group

REF NO	PART NO	QTY	DESCRIPTION
18	771046	1	RELEASE LEVER
20	771072	1	KIT, UPPER HANDLE -(Incl. Ref. 20-1 through 20-7)
20-1	-----	1	NUT
20-2	-----	1	HANDLE, UPPER
20-3	-----	1	BRACKET
20-4	-----	1	SCREW
20-5	-----	1	WARNING LABEL
20-6	-----	1	BRACKET
20-7	-----	1	FOAM GRIP
24	771049	1	KIT, LOWER HANDLE -(Incl. Ref. 24-1 & 24-2)
24-1	-----	1	HANDLE, LOWER
24-2	-----	1	BRACKET
26	771050	2	KIT, HANDLE HARDWARE -(Incl. Ref. 26-1 & 26-2)
26-1	-----	4	BOLT
26-2	-----	4	KNOB
27	771051	2	KIT, HANDLE BRACKETS -(Incl. Ref. 27-1 & 27-2)
27-1	-----	2	HANDLE BRACKET INSIDE
27-2	-----	2	HANDLE BRACKET OUTSIDE
28	771052	1	KIT, HANDLE SUPPORT -(Incl. Ref. 28-1 through 28-4)
28-1	-----	6	BOLT
28-2	-----	1	PLATE
28-3	-----	1	PLATE
28-4	-----	6	NUT
30	771053	1	HANDLE
32	771054	1	KIT, WHEEL AXLE -(Incl. Ref. 32-1 through 32-4)
32-1	-----	1	BOLT
32-2	-----	1	AXLE
32-3	-----	1	KNOB
32-4	-----	2	BOLT
33	771055	1	KIT, WHEELS -(Incl. Ref. 33-1 & 33-2)
33-1	-----	2	WHEEL
33-2	-----	2	COVER, Wheel
34	771056	1	KIT, GUARD HARDWARE -(Incl. Ref. 34-1 & 34-2)
34-1	-----	4	BOLT
34-2	-----	4	NUT
35	771057	1	TINE GUARD
38	771058	1	KIT, TINES -(Incl. Ref. 38-1 through 38-7)
38-1	-----	2	KLIK PIN
38-2	-----	1	TINE
38-3	-----	2	PIN, COTTER
38-4	-----	1	TINE
38-5	-----	1	TINE
38-6	-----	1	TINE
38-7	-----	1	PAD
39	771059	1	KIT, GEARBOX -(Incl. Ref. 39-1 through 39-4)

Handles & Tine Group

Note: Unless noted otherwise, use the standard torque specifications

Mfg. No: 1696869-00



Handles & Tine Group

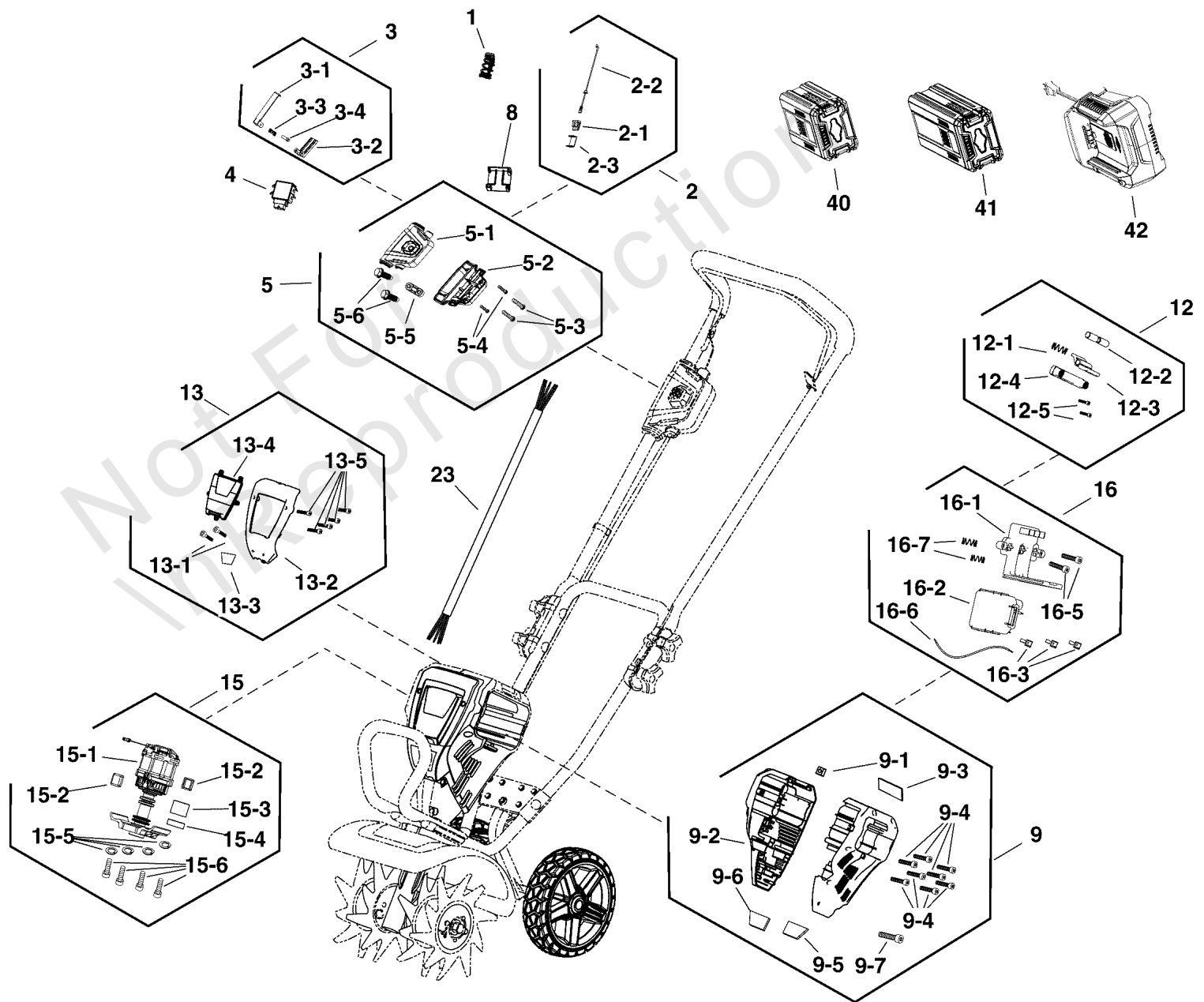
REF NO	PART NO	QTY	DESCRIPTION
39-1	-----	1	GASKET
39-2	-----	1	GEARBOX
39-3	-----	1	PIN
39-4	-----	1	GEAR, Drive

Not For In Reproduction

Power Head Group

Note: Unless noted otherwise, use the standard torque specifications

Mfg. No: 1696869-00



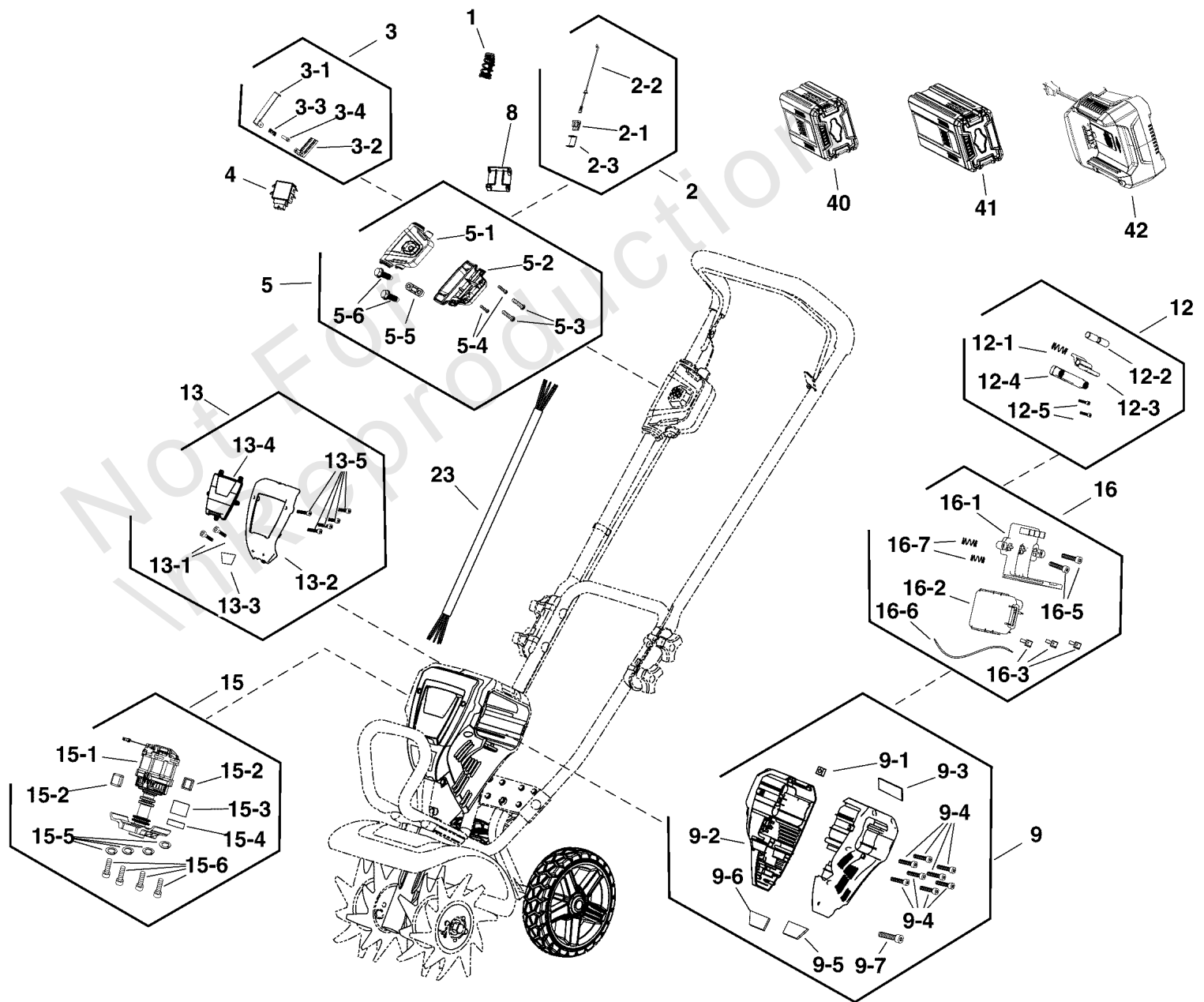
Power Head Group

REF NO	PART NO	QTY	DESCRIPTION
1	771034	1	SPRING
2	771035	1	KIT, CABLE ASSEMBLY -(Incl. Ref. 2-1 through 2-3)
2-1	-----	1	SPRING
2-2	84003406	1	CABLE, Bail
2-3	-----	1	BLOCK
3	771036	1	KIT, SLIDER ASSEMBLY
3-1	-----	1	PLATE
3-2	-----	1	BLOCK
3-3	-----	1	SPRING
3-4	-----	1	PIN
4	771037	1	ADAPTER, HARNESS
5	771069	1	KIT, STARTER ASSEMBLY
5-1	-----	1	SWITCH BOX COVER
5-2	-----	1	SWITCH BOX COVER
5-3	-----	1	SPRING
5-4	-----	1	SCREW
5-5	-----	1	CLAMP
5-6	-----	1	SCREW
8	771039	1	SWITCH INSERT
9	771070	1	KIT, MOTOR HOUSING
9-1	-----	2	NUT
9-2	-----	1	HOUSING, Right
9-3	-----	1	LABEL
9-4	-----	8	SCREW
9-5	-----	1	SPONGE
9-6	-----	1	SPONGE
9-7	-----	1	SCREW
12	770164	1	KIT, BATTERY RELEASE BUTTON
12-1	-----	1	SPRING
12-2	-----	1	PIN
12-3	-----	1	BUTTON, Battery Releasee
12-4	-----	1	PAD
12-5	-----	2	SCREW
13	771042	1	KIT, TOP COVER
13-1	-----	2	SCREW
13-2	-----	1	COVER, DECORATIVE
13-3	-----	1	LABEL
13-4	-----	1	RAIN CAP
13-5	-----	5	SCREW
15	771043	1	KIT, MOTOR ASSEMBLY
15-1	-----	1	MOTOR
15-2	-----	2	SEAL
15-3	-----	1	AXLE SLEEVE
15-4	-----	1	CLAMP
15-5	-----	4	SPRING WASHER
15-6	-----	4	BOLT
16	771071	1	KIT, PCB ASSEMBLY -(Incl. Ref. 16-1 through 16-7)
16-1	-----	1	BATTERY HOLDER
16-2	-----	1	PCB
16-3	-----	3	BATTERY TERMINAL

Power Head Group

Note: Unless noted otherwise, use the standard torque specifications

Mfg. No: 1696869-00



Power Head Group

REF NO	PART NO	QTY	DESCRIPTION
16-5	-----	2	SCREW
16-6	-----	1	WIRE
16-7	-----	2	SPRING
23	771048	1	WIRING HARNESS
40	1760266	1	* BATTERY, 2.0, 82V NA -(Option)
41	1760265	1	* BATTERY, 4.0, 82V NA -(Option)
42	1760263	1	* CHARGER, Battery, NA -(Option)
--	770294	1	REMOTE BELT FOR BATTERY -(Not Shown)

Not For In Reproduction

Hardware Identification & Torque Specifications

Torque Specification Chart								
FOR STANDARD METRIC MACHINE HARDWARE (Tolerance ± 20%)								
Property Class	5.6		8.8		10.9		12.9	
	Class 5.6		Class 8.8		Class 10.9		Class 12.9	
Size Of Hardware	in/lbs	Nm.	in/lbs	Nm.	in/lbs	Nm.	in/lbs	Nm.
	ft/lbs		ft/lbs		ft/lbs		ft/lbs	
M3	5.88	.56	13.44	1.28	19.2	1.80	22.92	2.15
M4	13.44	1.28	30.72	2.90	43.44	4.10	52.56	4.95
M5	26.4	2.50	60.96	5.75	5.97	8.10	7.15	9.7
M6	44.64	4.3	7.3	9.9	10.3	14	12.1	16.5
M7	5.2	7.1	12.1	16.5	16.9	23	19.9	27
M8	7.7	10.5	17.7	24	25	34	29	40
M10	15	21	35	48	50	67	59	81
M12	26	36	61	83	86.2	117	103	140
M14	42	58	101	132	136	185	162	220
M16	64	88	147	200	210	285	250	340
M18	89	121	202	275	287	390	346	470
M20	126	171	290	390	405	550	486	660
M22	169	230	390	530	559	745	656	890
M24	217	295	497	375	708	960	840	1140
M27	320	435	733	995	1032	1400	1239	1680
M30	435	590	995	1350	1401	1900	1681	2280
M33	590	800	1349	1830	1902	2580	2278	3090
M36	759	1030	1740	2360	2441	3310	2935	3980
M39	988	1340	2249	3050	3163	4290	3798	5150

Torque Specification Chart						
FOR STANDARD MACHINE HARDWARE (Tolerance ± 20%)						
Hardware Grade	No Marks		SAE Grade 5		SAE Grade 8	
	SAE Grade 2		SAE Grade 5		SAE Grade 8	
Size Of Hardware	in/lbs	Nm.	in/lbs	Nm.	in/lbs	Nm.
	ft/lbs		ft/lbs		ft/lbs	
8-32	19	2.1	30	3.4	41	4.6
8-36	20	2.3	31	3.5	43	4.9
10-24	27	3.1	43	4.9	60	6.8
10-32	31	3.5	49	5.5	68	7.7
1/4-20	66	7.6	8	10.9	12	16.3
1/4-28	76	8.6	10	13.6	14	19.0
5/16-18	11	15.0	17	23.1	25	34.0
5/16-24	12	16.3	19	25.8	29	34.0
3/8-16	20	27.2	30	40.8	45	61.2
3/8-24	23	31.3	35	47.6	50	68.0
7/16-14	30	40.8	50	68.0	70	95.2
7/16-20	35	47.6	55	74.8	80	108.8
1/2-13	50	68.0	75	102.0	110	149.6
1/2-20	55	74.8	90	122.4	120	163.2
9/16-12	65	88.4	110	149.6	150	204.0
9/16-18	75	102.0	120	163.2	170	231.2
5/8-11	90	122.4	150	204.0	220	299.2
5/8-18	100	136	180	244.8	240	326.4
3/4-10	160	217.6	260	353.6	386	525.0
3/4-16	180	244.8	300	408.0	420	571.2
7/8-9	140	190.4	400	544.0	600	816.0
7/8-14	155	210.8	440	598.4	660	897.6
1-8	220	299.2	580	788.8	900	1,244.0
1-12	240	326.4	640	870.4	1,000	1,360.0

The guides and ruler furnished below are designed to help you select the appropriate hardware.



Nut, M8

Thread Diameter (mm)

Inside Diameter (in) Threads per inch

Nut, 1/2-16



Screw, M8- 1.25 x 25

Thread Diameter (mm) Distance between threads (mm) Body Length (mm)

Body Diameter Threads per inch Body Length (in)

Screw, 1/2- 16 x 2



Standard Hardware Sizing

When a washer or nut is identified as 1/2" (M8), this is the *Nominal size*, meaning the *inside diameter* is 1/2 inch (8mm metric thread diameter); if a second number is present it represents the *threads per inch* (distance between threads).

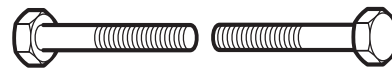
When bolt or capscrew is identified as 1/2 - 16 x 2" (M8 - 1.25 x 50), this means the *Nominal size*, or body diameter is 1/2 inch (8mm metric thread diameter), the second number, 16, represents the *threads per inch*, (*distance between threads*). The final number is the body length of the bolt or screw, 2 inches (50mm).

NOTES

- These torque values are to be used for all hardware excluding: locknuts, self-tapping screws, thread forming screws, sheet metal screws and socket head setscrews.
- Recommended seating torque values for locknuts:
 - for prevailing torque locknuts - use 65% of grade 5 torques.
 - for flange whizlock nuts and screws - use 135% of grade 5 torques.
- Unless otherwise noted on assembly drawings, all torque values must meet this specification.

Common Hardware Types

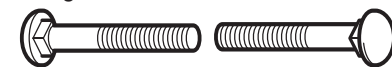
Hex Head Capscrew



Washer



Carriage Bolt



Hex Nut

Wrench & Fastener Size Guide

1/4" Bolt or Nut Wrench—7/16"	5/16" Bolt or Nut Wrench—1/2"	3/8" Bolt or Nut Wrench—9/16"	7/16" Bolt or Nut Wrench (Bolt)—5/8" Wrench (Nut)—11/16"	1/2" Bolt or Nut Wrench—3/4"
M6 Bolt or Nut Wrench—10mm	M8 Bolt or Nut Wrench—13mm	M10 Bolt or Nut Wrench—17mm	M12 Bolt or Nut Wrench—19mm	M14 Bolt or Nut Wrench—22mm

