



Parts Manual

Mfg. No: 1687982
SXD21SSWM82K. 82V Cordless Step

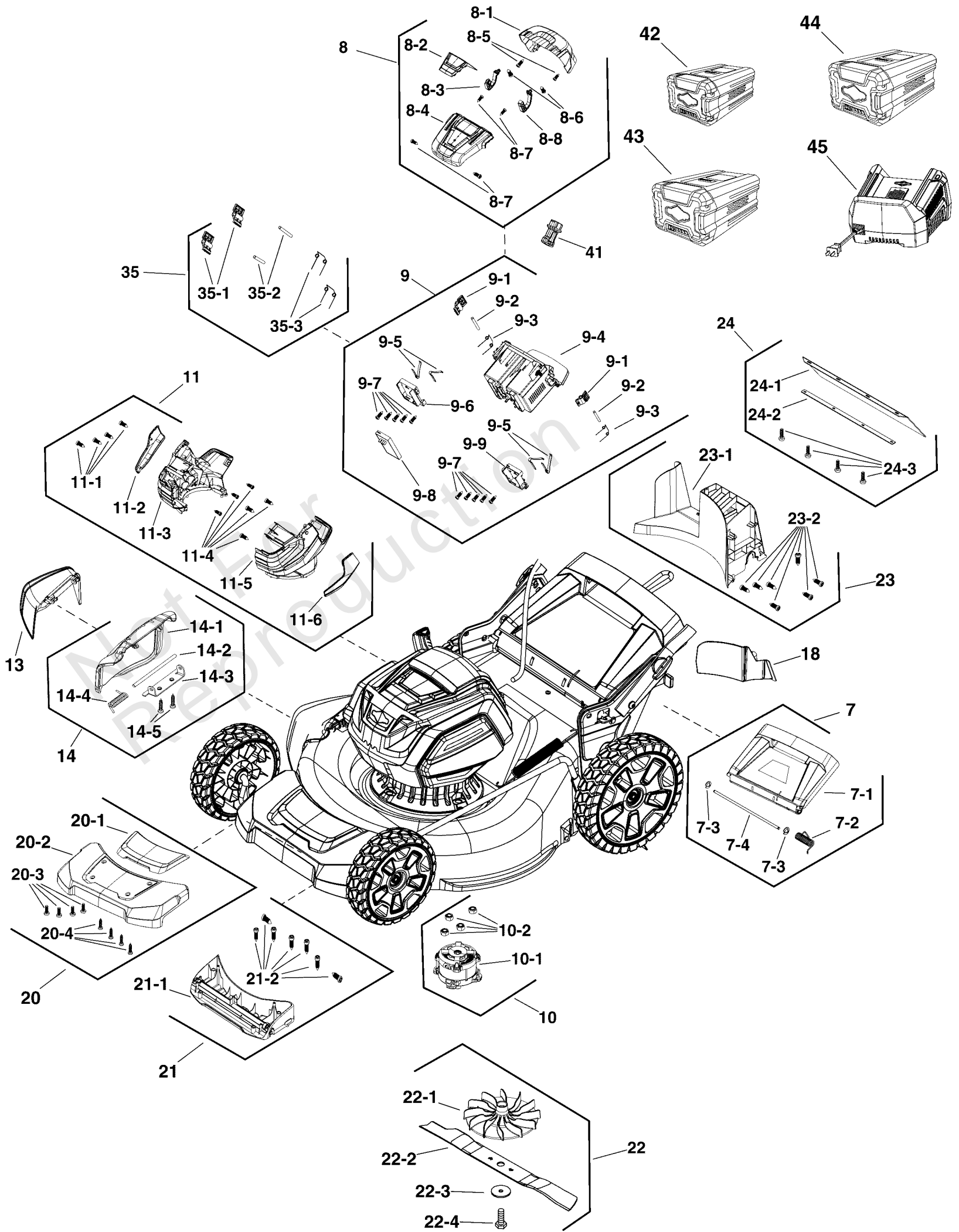
Model Components	Page
Deck Group.....	4
Handles Group.....	8
Wheels & Deck Group.....	12
Torque Specification Chart.....	14

Not For
Reproduction

Deck Group

Note: Unless noted otherwise, use the standard torque specifications

Mfg. No: 1687982



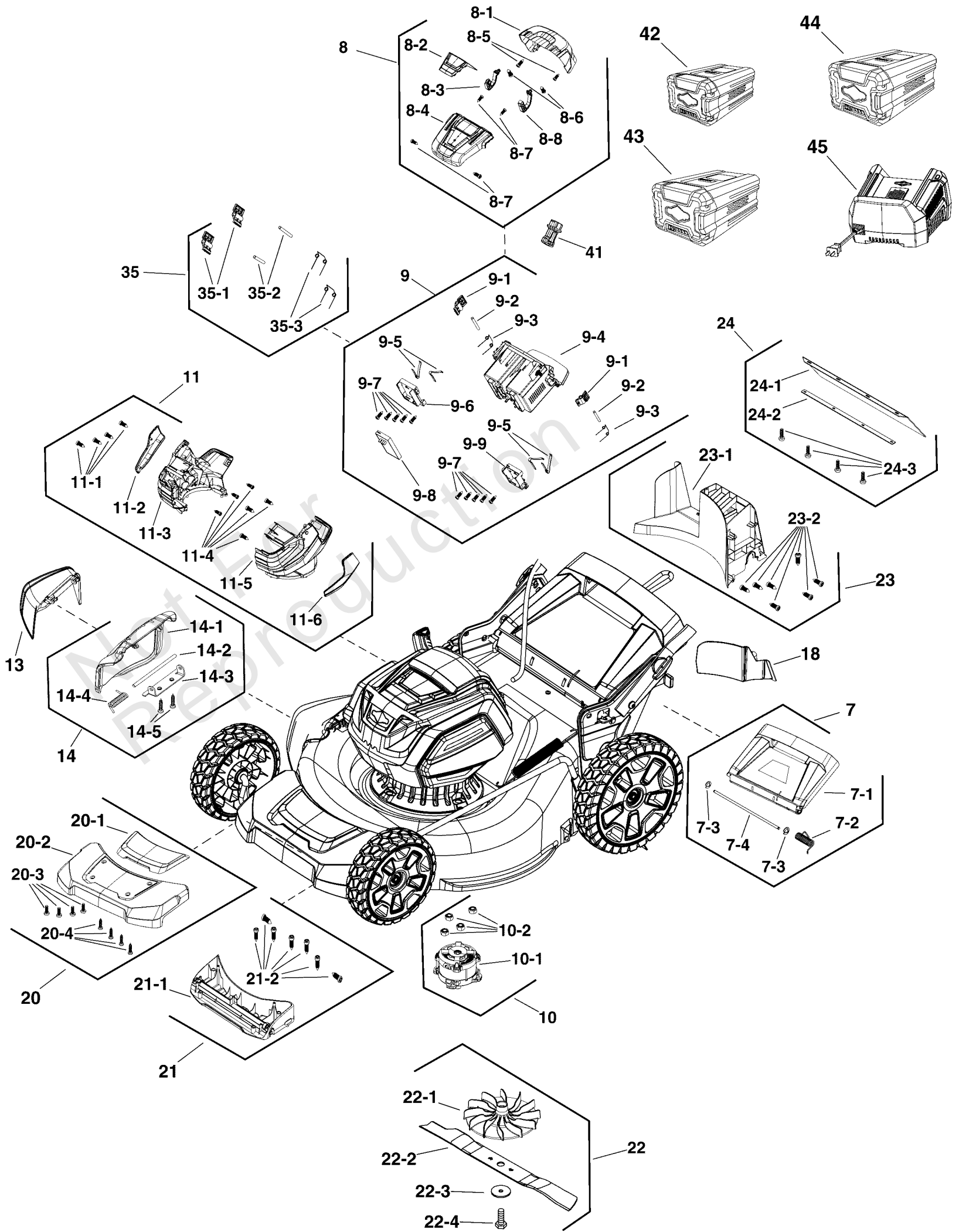
Deck Group

REF NO	PART NO	QTY	DESCRIPTION
7	84002061	1	REAR COVER ASSEMBLY
7-1	-----	1	REAR COVER
7-2	-----	1	SPRING
7-3	-----	2	SPLIT WASHER
7-4	-----	1	SHAFT
8	84003278	1	TOP COVER ASSEMBLY
8-1	-----	1	COVER, Battery
8-2	-----	1	TOP COVER
8-3	-----	1	HINGE
8-4	-----	1	COVER, Top
8-5	-----	2	SCREW, Self Tapping
8-6	-----	2	SCREW ST4.2-12
8-7	-----	4	SCREW, Pan Head
8-8	-----	1	HINGE
9	84002076	1	BATTERY HOUSING & PCB ASSEMBLY
9-1	-----	2	BUTTON
9-2	-----	2	PIN
9-3	-----	2	SPRING
9-4	-----	1	BATTERY HOUSING, Dual
9-5	-----	4	SPRING
9-6	-----	1	PLATE, Printed Circuit Board
9-7	-----	10	SCREW ST4.2-12
9-8	-----	1	PRINTED CIRCUIT BOARD
9-9	-----	1	PLATE, Printed Circuit Board
10	-----	1	MOTOR ASSEMBLY
10-1	-----	1	MOTOR
10-2	-----	4	NUT
11	-----	1	BATTERY COVER ASSEMBLY
11-1	-----	10	SCREW
11-2	-----	1	DUST SCREEN
11-3	-----	1	RIGHT COVER
11-4	-----	1	LEFT COVER
11-5	-----	1	LEFT DECORATIVE COVER
13	770194	1	KIT, DEFLECTOR
14	770193	1	KIT, COVER
14-1	-----	1	COVER
14-2	-----	1	SHAFT
14-3	-----	1	BRACKET
14-4	-----	1	SPRING, Torsion
14-5	-----	2	SCREW
18	84002065	1	PLUG, Mulching
20	84003422	1	KIT, TOP COVER
20-1	-----	1	PANEL
20-2	-----	1	PANEL COVER
20-3	-----	4	SCREW
20-4	-----	4	SCREW
21	84003423	1	KIT, BOTTOM COVER
21-1	-----	1	PANEL, Bottom
21-2	-----	7	SCREW
22	84002068	1	KIT, Mower Blade
22-1	-----	1	FAN

Deck Group

Note: Unless noted otherwise, use the standard torque specifications

Mfg. No: 1687982



Deck Group

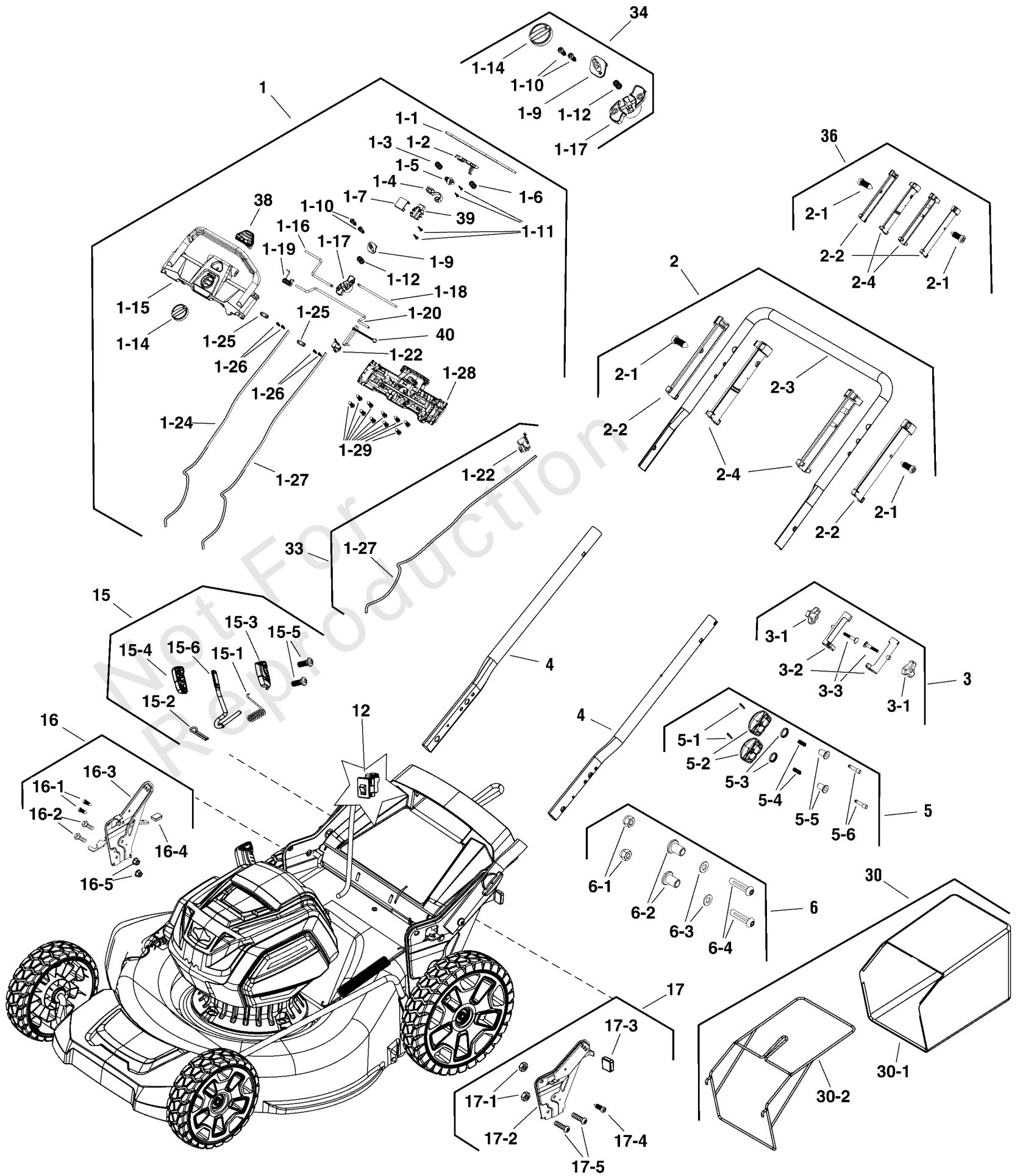
REF NO	PART NO	QTY	DESCRIPTION
22-2	-----	1	BLADE, Mower
22-3	-----	1	WASHER
22-4	-----	1	BOLT M10X35
23	-----	1	STRAP, Gearbox
23-1	-----	1	BULKHEAD, BACK
23-2	-----	7	SCREW
24	84002066	1	KIT, Rear Deflector
24-1	-----	1	REAR FLAP
24-2	-----	1	BRACE
24-3	-----	4	SCREW ST4.2-16
35	84002075	1	KIT, Battery Release
35-1	-----	2	BUTTON
35-2	-----	2	PIN
35-3	-----	2	SPRING
41	84002064	1	KEY, Safety
42	1760266	1	* BATTERY, 2.0, 82V NA
43	1760265	1	* BATTERY, 4.0, 82V NA
44	1760967	1	* BATTERY, 5.0, 82V NA
45	1760263	1	* CHARGER, RAPID, NA

Not For
Reproduction

Handles Group

Note: Unless noted otherwise, use the standard torque specifications

Mfg. No: 1687982



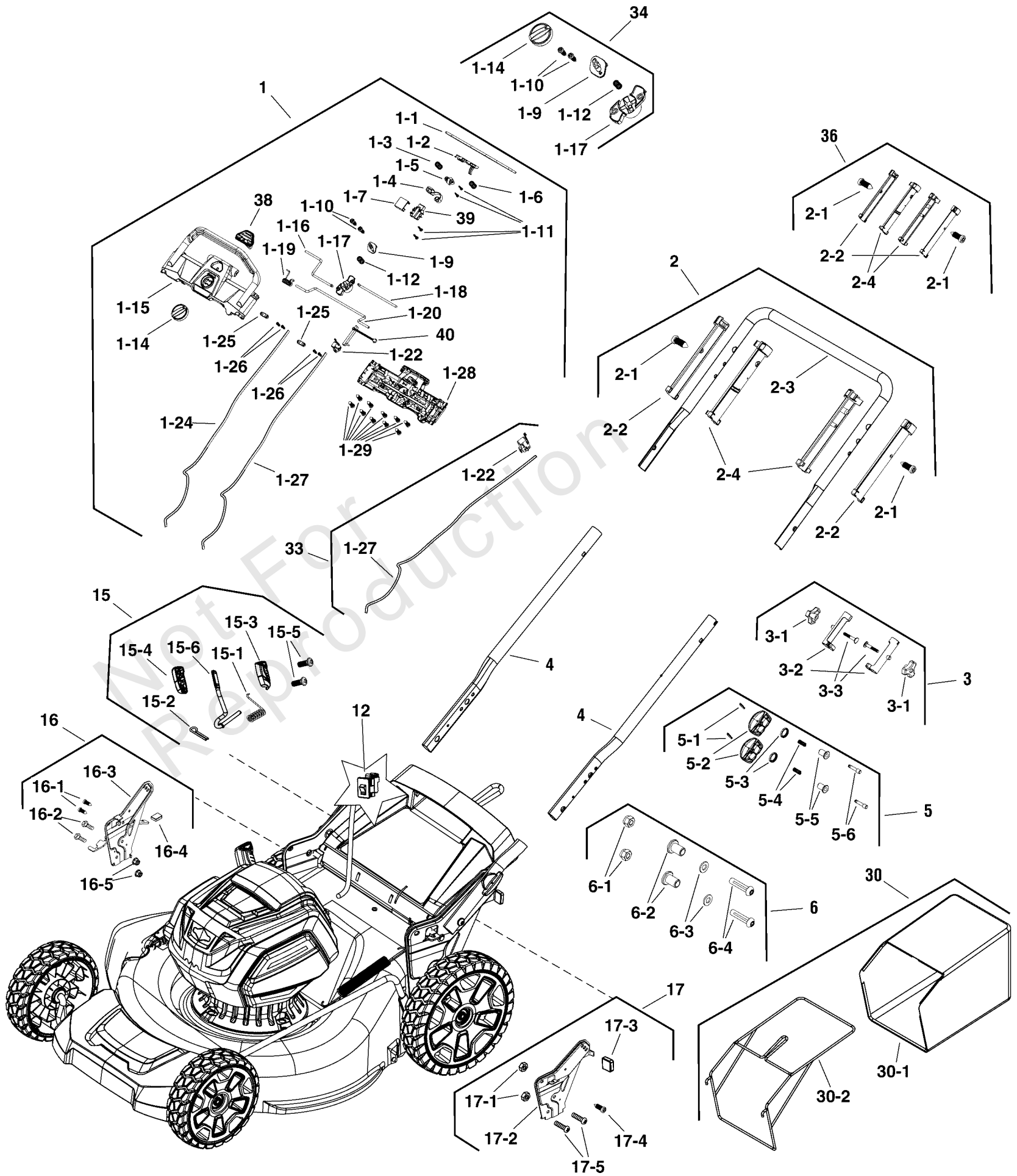
Handles Group

REF NO	PART NO	QTY	DESCRIPTION
1	84002042	1	PANEL ASSEMBLY -(Includes Ref. Nos. 1-1 to 1-29, 38, 39 & 40)
1-1	-----	1	ROD, Personal Pace
1-2	-----	1	SWITCH
1-3	-----	1	SPRING
1-4	-----	1	SPRING, Pivot
1-5	-----	1	DISC, Tension
1-6	-----	1	SPRING
1-7	-----	1	INSERT
1-9	-----	1	PIVOT, Control
1-10	-----	2	SCREW, ST 4.2 x 18
1-11	-----	4	SCREW
1-12	-----	1	SPRING, Compression
1-14	-----	1	KNOB, Control
1-15	-----	1	PANEL, Upper
1-16	-----	1	LEVER, Lock, RH
1-17	-----	1	PIVOT, Lock
1-18	-----	1	LEVER, Lock, LH
1-19	-----	1	SPRING, Torsion
1-20	-----	1	LEVER, Control
1-22	-----	1	SWITCH
1-24	-----	1	CABLE, Blade
1-25	-----	1	RETAINER
1-26	-----	4	SCREW, ST 4 x 16-F
1-27	-----	1	CABLE, Drive
1-28	-----	1	PANEL, Lower
1-29	-----	11	HINGE
2	84002043	1	UPPER HANDLE ASSEMBLY -(Includes Ref. Nos. 2-1 through 2-4)
2-1	-----	2	HINGE
2-2	-----	2	SLIDE, Outer
2-3	-----	1	HANDLE, Upper
2-4	-----	2	SLIDE, Inner
3	84001954	1	HARDWARE, Mounting -(Includes Ref. Nos. 3-1 through 3-3)
3-1	-----	2	KNOB
3-2	-----	2	SLEEVE
3-3	-----	2	BOLT
4	84001931	2	LOWER HANDLE ASSEMBLY
5	84001929	1	PIVOT ASSEMBLY, Lower Handle -(Includes Ref. Nos. 5-1 through 5-6)
5-1	-----	2	PIN
5-2	-----	2	KNOB, Lower Handle
5-3	-----	2	GASKET
5-4	-----	2	SPRING
5-5	-----	2	INSERT
5-6	-----	2	POST
6	84001930	1	HADWARE KIT, Lower Handle -(Includes Ref. Nos. 6-1 through 6-4)
6-1	-----	2	NUT, M8
6-2	-----	2	INSERT
6-3	-----	2	WASHER, Flat
6-4	-----	2	BOLT

Handles Group

Note: Unless noted otherwise, use the standard torque specifications

Mfg. No: 1687982



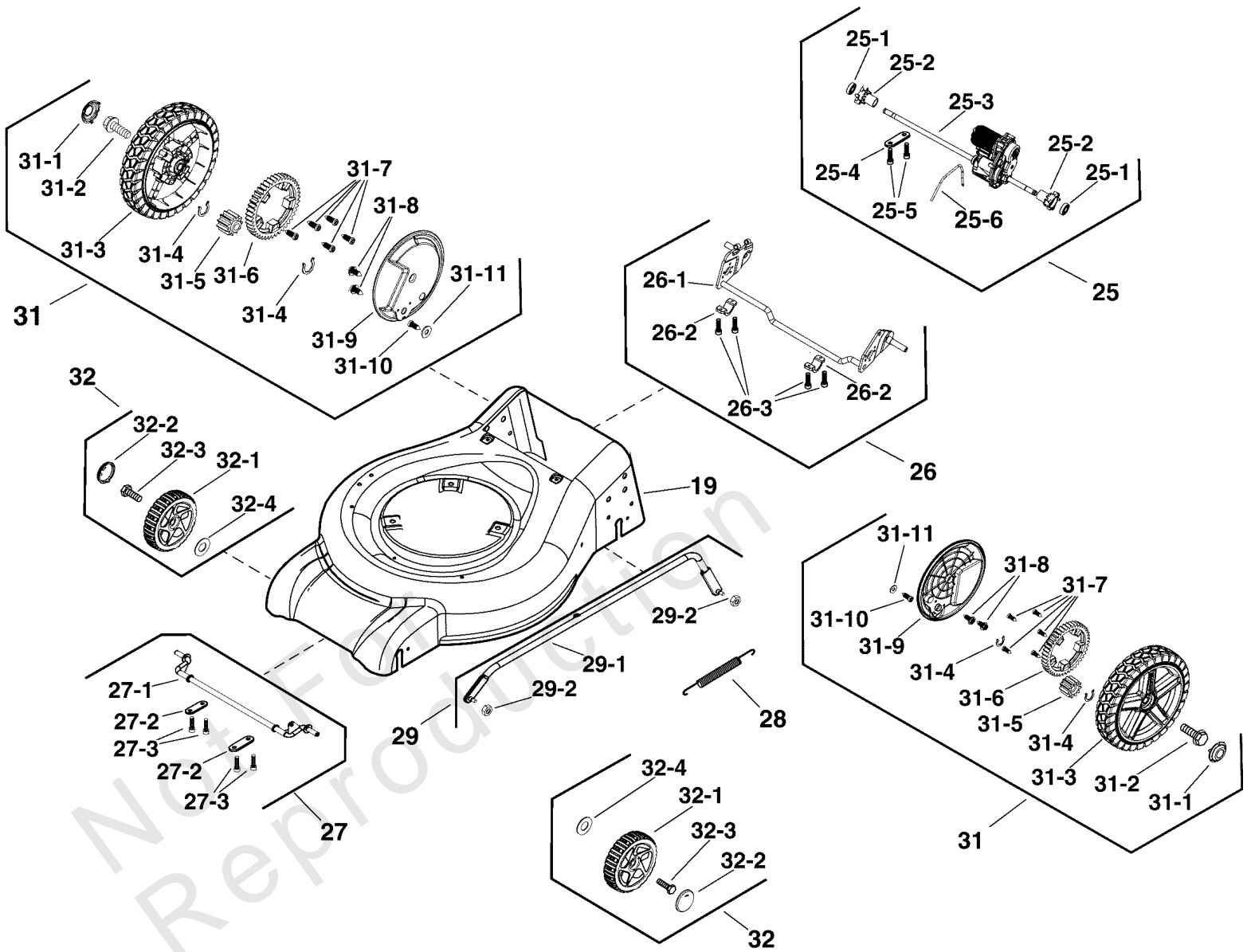
Handles Group

REF NO	PART NO	QTY	DESCRIPTION
12	84001946	1	SAFETY SWITCH ASSEMBLY
15	770180	1	HEIGHT ADJUST ASSEMBLY, NA -(Includes Ref. Nos. 15-1 through 15-6)
15-1	-----	1	SPRING
15-2	-----	1	PIN, COTTER
15-3	-----	1	LEFT HOUSING
15-4	-----	1	RIGHT HOUSING
15-5	-----	2	SCREW, Pan Torx Self Tap, ST4.2 x 20-C
15-6	-----	1	ROD, Adjusting
16	-----	1	HEIGHT ADJUST, Right -(Order Wholegood)
16-1	-----	2	SCREW
16-2	-----	2	BOLT, Hex Head, M10 x 20
16-3	-----	1	BRACKET, Height Adjust
16-4	-----	1	BUMPER
16-5	-----	2	LOCKNUT, M10
17	-----	1	HEIGHT ADJUST, Left -(Order Wholegood)
17-1	-----	2	LOCKNUT, M10
17-2	-----	1	BRACKET, Height Adjust
17-3	-----	1	BUMPER
17-4	-----	1	SCREW
17-5	-----	2	BOLT, Hex Head, M10 x 20
30	770182	1	KIT, GRASS BAGGER
30-1	-----	1	BAG, Grass Catcher
30-2	-----	1	FRAME
33	84002074	1	KIT, Drive Cable -(Includes Ref. Nos. 1-22 & 1-27)
33-1	-----	1	SWITCH
33-2	-----	1	CABLE, Drive
34	84002070	1	KIT, Control Knob -(Includes Ref. Nos. 1-9, 1-10, 1-12, 1-14, 1-17)
36	84001635	1	KIT, Slides -(Includes Ref. Nos. 2-1, 2-2 & 2-4)
38	84002071	1	KIT, Safety Key
39	84002072	1	SWITCH, Operator Presence
40	84002073	1	SWITCH, Speed Control

Wheels & Deck Group

Note: Unless noted otherwise, use the standard torque specifications

Mfg. No: 1687982



Wheels & Deck Group

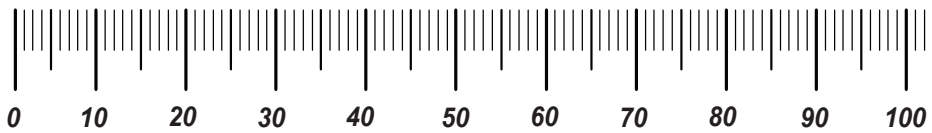
REF NO	PART NO	QTY	DESCRIPTION
19	-----	1	MOWER DECK -(Order Wholegood)
25	84002067	1	KIT, GEARBOX
25-1	-----	2	BEARING
25-2	-----	2	COLLAR, Locking
25-3	-----	1	GEARBOX
25-4	-----	1	PLATE, Axle
25-5	-----	2	SCREW, Pan Torx Self Tap, ST4.2 x 20-C
25-6	-----	1	STRAP, Gearbox
26	84003421	1	KIT, REAR AXLE
26-1	-----	1	AXLE, REAR
26-2	-----	2	PLATE, Axle
26-3	-----	4	SCREW, Pan Torx Self Tap, ST4.2 x 20-C
27	770186	1	KIT, FRONT AXLE
27-1	-----	1	AXLE, Front
27-2	-----	2	PLATE, Axle
27-3	-----	4	SCREW, Pan Torx Self Tap, ST4.2 x 20-C
28	84001935	1	SPRING, Height Adjust
29	-----	1	HEIGHT ADJUST ASSEMBLY -(Order Wholegood)
29-1	-----	1	ROD, Height Adjust
29-2	-----	2	NUT
31	84002069	1	KIT, REAR WHEEL
31-1	-----	1	COVER, Wheel
31-2	-----	1	BOLT
31-3	-----	1	WHEEL, 10"
31-4	-----	2	RING, Snap
31-5	-----	1	GEAR, Drive
31-6	-----	1	GEAR, DRIVE
31-7	-----	5	SCREW, HexHead Self Tap, ST4.2 x 20-C
31-8	-----	2	SCREW, HexHead Self Tap
31-9	-----	1	COVER, Dust
31-10	-----	1	SCREW, Socket Head, ST4.2 x 20
31-11	-----	1	GASKET, 5.3
32	771438	1	KIT, FRONT WHEEL
32-1	-----	1	WHEEL, 8"
32-2	-----	1	WASHER
32-3	-----	1	BOLT
32-4	-----	1	COVER, Wheel

Hardware Identification & Torque Specifications

Torque Specification Chart								
FOR STANDARD METRIC MACHINE HARDWARE (Tolerance ± 20%)								
Property Class	5.6		8.8		10.9		12.9	
	Class 5.6		Class 8.8		Class 10.9		Class 12.9	
Size Of Hardware	in/lbs	Nm.	in/lbs	Nm.	in/lbs	Nm.	in/lbs	Nm.
	ft/lbs		ft/lbs		ft/lbs		ft/lbs	
M3	5.88	.56	13.44	1.28	19.2	1.80	22.92	2.15
M4	13.44	1.28	30.72	2.90	43.44	4.10	52.56	4.95
M5	26.4	2.50	60.96	5.75	5.97	8.10	7.15	9.7
M6	44.64	4.3	7.3	9.9	10.3	14	12.1	16.5
M7	5.2	7.1	12.1	16.5	16.9	23	19.9	27
M8	7.7	10.5	17.7	24	25	34	29	40
M10	15	21	35	48	50	67	59	81
M12	26	36	61	83	86.2	117	103	140
M14	42	58	101	132	136	185	162	220
M16	64	88	147	200	210	285	250	340
M18	89	121	202	275	287	390	346	470
M20	126	171	290	390	405	550	486	660
M22	169	230	390	530	559	745	656	890
M24	217	295	497	375	708	960	840	1140
M27	320	435	733	995	1032	1400	1239	1680
M30	435	590	995	1350	1401	1900	1681	2280
M33	590	800	1349	1830	1902	2580	2278	3090
M36	759	1030	1740	2360	2441	3310	2935	3980
M39	988	1340	2249	3050	3163	4290	3798	5150

Torque Specification Chart						
FOR STANDARD MACHINE HARDWARE (Tolerance ± 20%)						
Hardware Grade	No Marks		SAE Grade 5		SAE Grade 8	
	SAE Grade 2		SAE Grade 5		SAE Grade 8	
Size Of Hardware	in/lbs	Nm.	in/lbs	Nm.	in/lbs	Nm.
	ft/lbs		ft/lbs		ft/lbs	
8-32	19	2.1	30	3.4	41	4.6
8-36	20	2.3	31	3.5	43	4.9
10-24	27	3.1	43	4.9	60	6.8
10-32	31	3.5	49	5.5	68	7.7
1/4-20	66	7.6	8	10.9	12	16.3
1/4-28	76	8.6	10	13.6	14	19.0
5/16-18	11	15.0	17	23.1	25	34.0
5/16-24	12	16.3	19	25.8	29	34.0
3/8-16	20	27.2	30	40.8	45	61.2
3/8-24	23	31.3	35	47.6	50	68.0
7/16-14	30	40.8	50	68.0	70	95.2
7/16-20	35	47.6	55	74.8	80	108.8
1/2-13	50	68.0	75	102.0	110	149.6
1/2-20	55	74.8	90	122.4	120	163.2
9/16-12	65	88.4	110	149.6	150	204.0
9/16-18	75	102.0	120	163.2	170	231.2
5/8-11	90	122.4	150	204.0	220	299.2
5/8-18	100	136	180	244.8	240	326.4
3/4-10	160	217.6	260	353.6	386	525.0
3/4-16	180	244.8	300	408.0	420	571.2
7/8-9	140	190.4	400	544.0	600	816.0
7/8-14	155	210.8	440	598.4	660	897.6
1-8	220	299.2	580	788.8	900	1,244.0
1-12	240	326.4	640	870.4	1,000	1,360.0

The guides and ruler furnished below are designed to help you select the appropriate hardware.

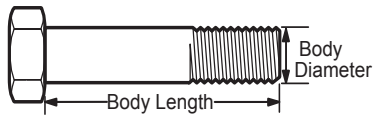


Nut, M8

Thread Diameter (mm)

Inside Diameter (in) Threads per inch

Nut, 1/2-16

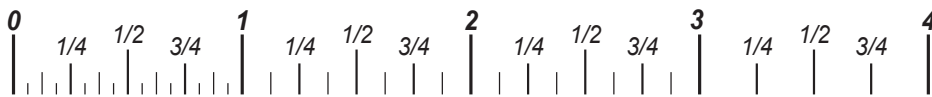


Screw, M8- 1.25 x 25

Thread Diameter (mm) Distance between threads (mm) Body Length (mm)

Body Diameter Threads per inch Body Length (in)

Screw, 1/2- 16 x 2



Standard Hardware Sizing

When a washer or nut is identified as 1/2" (M8), this is the *Nominal size*, meaning the *inside diameter* is 1/2 inch (8mm metric thread diameter); if a second number is present it represents the *threads per inch* (distance between threads).

When bolt or capscrew is identified as 1/2 - 16 x 2" (M8 - 1.25 x 50), this means the *Nominal size*, or body diameter is 1/2 inch (8mm metric thread diameter), the second number, 16, represents the *threads per inch*, (*distance between threads*). The final number is the body length of the bolt or screw, 2 inches (50mm).

NOTES

- These torque values are to be used for all hardware excluding: locknuts, self-tapping screws, thread forming screws, sheet metal screws and socket head setscrews.
- Recommended seating torque values for locknuts:
 - for prevailing torque locknuts - use 65% of grade 5 torques.
 - for flange whizlock nuts and screws - use 135% of grade 5 torques.
- Unless otherwise noted on assembly drawings, all torque values must meet this specification.

Common Hardware Types

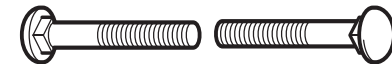
Hex Head Capscrew



Washer



Carriage Bolt



Hex Nut

Wrench & Fastener Size Guide

1/4" Bolt or Nut Wrench—7/16"	5/16" Bolt or Nut Wrench—1/2"	3/8" Bolt or Nut Wrench—9/16"	7/16" Bolt or Nut Wrench (Bolt)—5/8" Wrench (Nut)—11/16"	1/2" Bolt or Nut Wrench—3/4"
M6 Bolt or Nut Wrench—10mm	M8 Bolt or Nut Wrench—13mm	M10 Bolt or Nut Wrench—17mm	M12 Bolt or Nut Wrench—19mm	M14 Bolt or Nut Wrench—22mm

