



Parts Manual

Mfg. No: 2691525-00
2811525BVE, 28" 11.5 HP Rear Engine
Rider Series 25

1692125 - Cart, Dump (10 Cu. Ft.).....

1696324 - Cover, Tractor.....

7600071 - Cover, Tractor.....

7104196BZYP - High Lift Blade, 28".....

1697108A-00 - Grass Catcher, Single Bag, RER.....

7104083BZYP - KIT, Ninja Mulching Blade.....

Not For
Reproduction

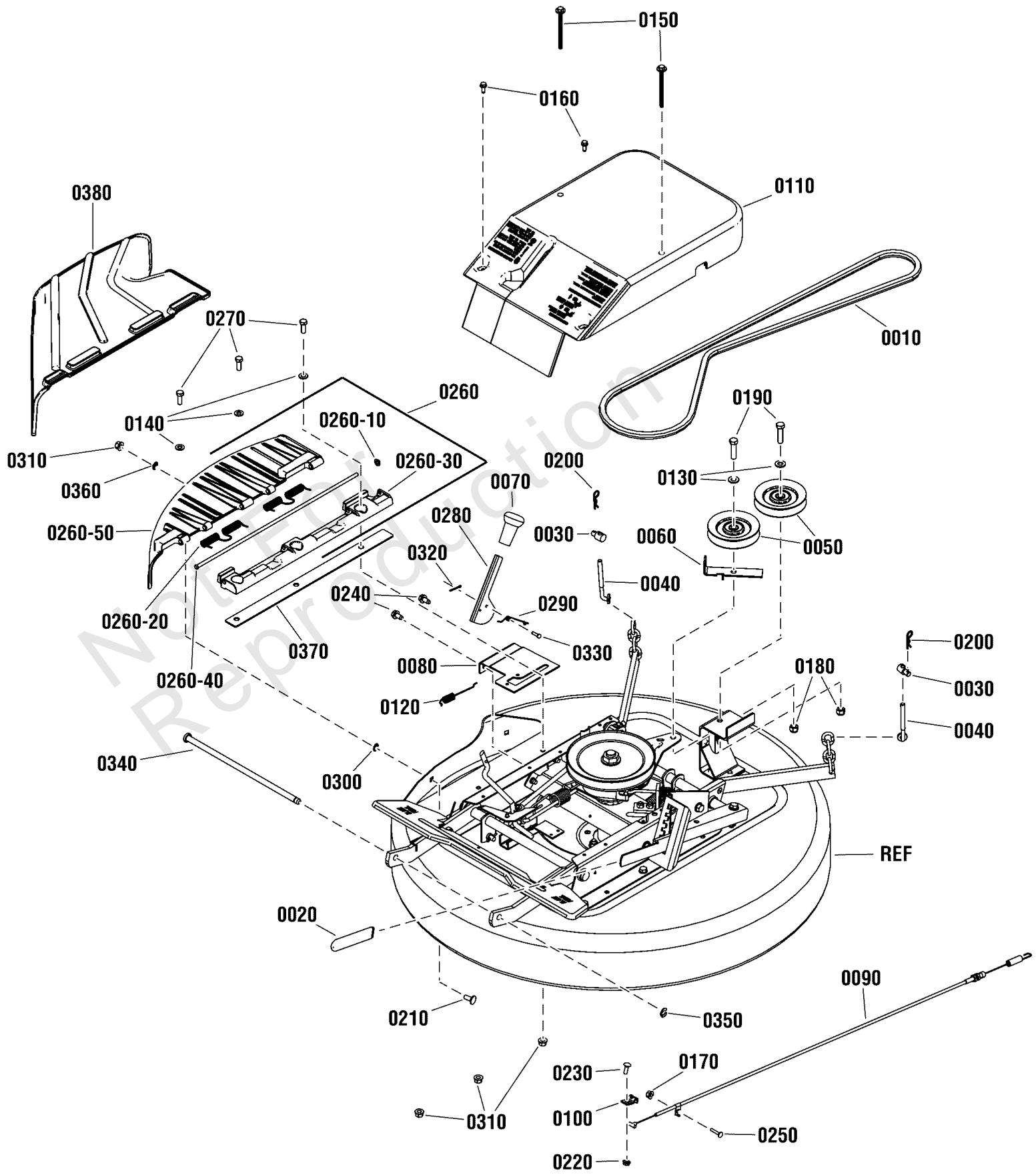
Model Components	Page
28" & 33" Mower Deck Final.	4
28" Mower Deck Clutch Assembly.	8
Decals Group.	10
Deck Rails & Lift Group.	12
Differential Assembly.	14
Electrical Group.	16
Engine Group.	18
Front End Group.	20
Gear Shifter Assembly.	22
Main Case Assembly - US.	24
Mechanical Drive Group.	26
Primary Chain Case.	28
Seat Group.	30
Spindle Assembly.	32
Wheel Group.	34
Torque Specification Chart.	36

Not For
Reproduction

28" & 33" Mower Deck Final

Note: Unless noted otherwise, use the standard torque specifications

Mfg. No: 2691525-00



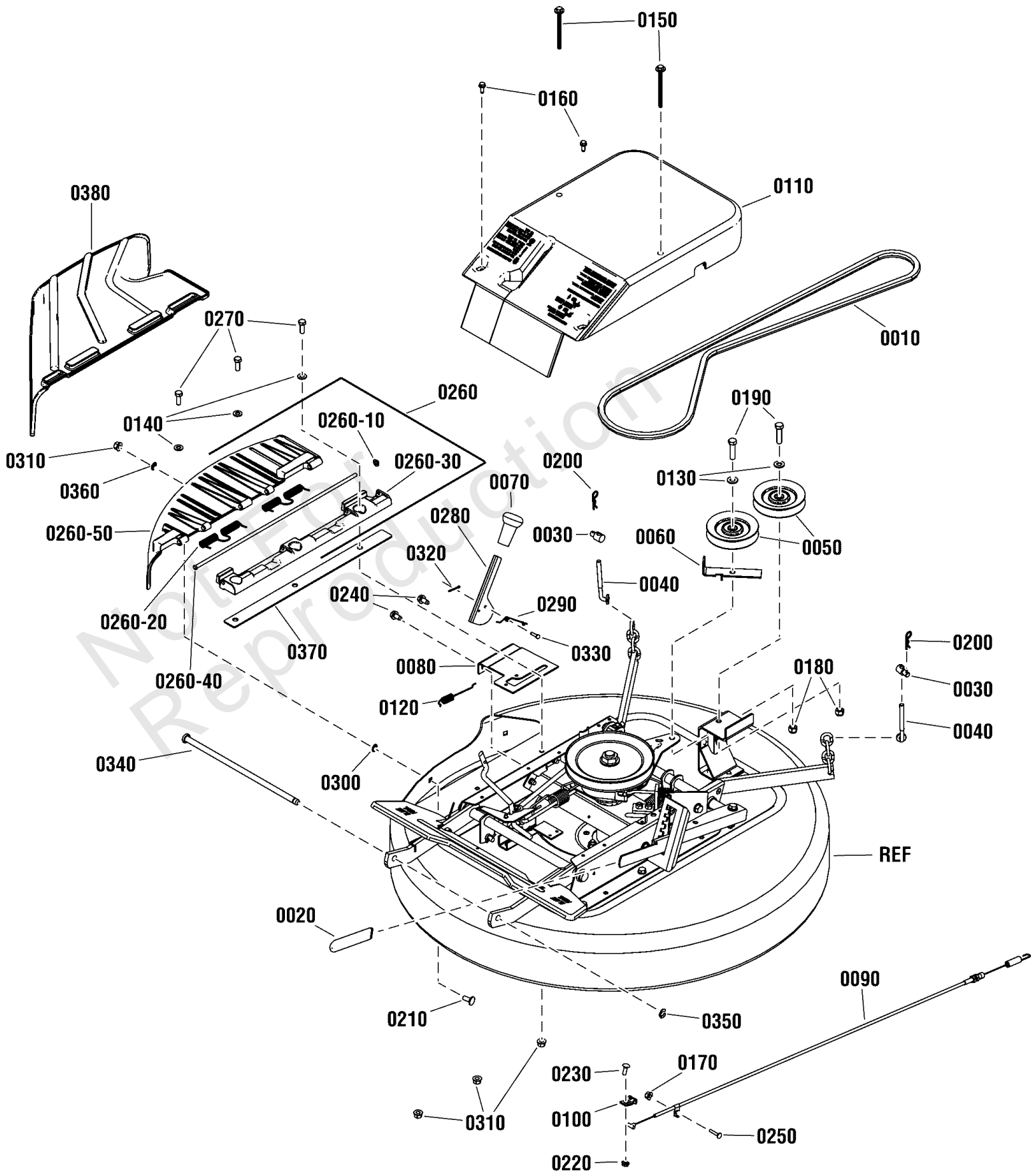
28" & 33" Mower Deck Final

REF NO	PART NO	QTY	DESCRIPTION
0010	7022252YP	1	BELT, Spindle Drive (72.75" AA Section, Kevlar) -(28" Models)
0010	7043844YP	1	BELT, 73.75 AA -(33" Models)
0020	7105356YP	1	GRIP, DECK LIFT
0030	7028200SM	2	SWIVEL, Adjustable
0040	703827	2	ROD, Adjusting
0050	7029624YP	2	PULLEY, Idler, .375 ID, 4 OD -(One on 28", Two on 33")
0060	7032111YP	1	RESTRICTOR, Belt, 2.18" w/Lock Tab
0070	7046874YP	1	GRIP, Handle, .510 Square Hole
0080	7600140YP	1	ASSEMBLY, Clutch Plate, RLM
0090	7073216YP	1	CABLE ASSEMBLY, No Reverse in Mow
0100	7073217YP	1	CLIP, Cable, RER
0110	1760729YP	1	COVER, Spindle, RER
0120	7074649YP	1	SPRING, Latch, .072 DIA., 3.6" Long
0130	703590	2	WASHER, .406 -(One on 28", Two on 33")
0140	703350	3	WASHER, 5/16, Flat SAE, Zinc/Clear
0150	7091015	2	SCREW, 1/4-20 x 3-1/2" Hex Head w/Free Spinning Washer
0160	703054	2	SCREW, Hex Washer Head, 1/4-20 x 5/8
0170	703412	1	NUT, Nylock, #10-24
0180	703117	2	NUT, Hex, Nylock, 3/8-16, GR5 -(One on 28", Two on 33")
0190	703406	2	CAPSCREW, Hex Head, 3/8-16 X 1 1/2, GR5 -(One on 28", Two on 33")
0200	703300	2	PIN, Hair, 3/32 x 1 5/8
0210	703185	1	BOLT, Carriage, 5/16-18 X 3/4
0220	703233	2	NUT, Serrated, Flange, 1/4-20, GR5
0230	703575	1	BOLT, 1/4-20 x 3/4
0240	703949	1	SCREW, Washer Head, 5/16-18 X 5/8
0250	7092051YP	1	BOLT, #10-24 X 1, Flat Head Carriage, BZ
0260	7105691YP	1	ASSEMBLY, Mulching Cover, RER, 28" -(Used on 28" only)
0260	7105871YP	2	ASSEMBLY, Mulching Cover, RER, 33" -(Used on 33" only)
0260-10	704005	1	NUT, 1/4", Push, Zinc/Clear (Not Shown)
0260-20	7103309YP	1	SPRING, Torsion, Rear Door (Not Shown)
0260-30	7105346YP	1	HINGE, Chute, RER, 28"/33" (Not Shown)
0260-40	7105689YP	1	ROD, Chute .25 OD, 17.62" Long (Not Shown)
0260-50	7105691YP	3	ASSEMBLY, Mulching Cover, RER, 28" -(Used on 28" only)
0260-50	7105870YP	1	COVER, Mulching, RER, 33" (Not Shown) -(Used on 33" only)
0270	703408	1	SCREW, Hex Head Cap, 5/16-18 X 7/8, GR5
0280	7046567BMYP	1	HANDLE, Blade Engagement (Flip)
0290	7046648YP	4	SPRING, Torsion, Flip Handle
0300	703297	1	RETAINER, 5/16 X 5/8
0310	703115	1	NUT, Flange Nylock, 5/16-18
0320	703312	1	PIN, Cotter, 3/32 X 3/4
0330	703313	1	PIN, Clevis
0340	7022717YP	1	ROD, Deck Support (Front Lift Arm to Front End)
0350	7017847YP	1	RING, .438 External Retaining
0360	703937	1	NUT, Ny Lock, #10-32

28" & 33" Mower Deck Final

Note: Unless noted otherwise, use the standard torque specifications

Mfg. No: 2691525-00



28" & 33" Mower Deck Final

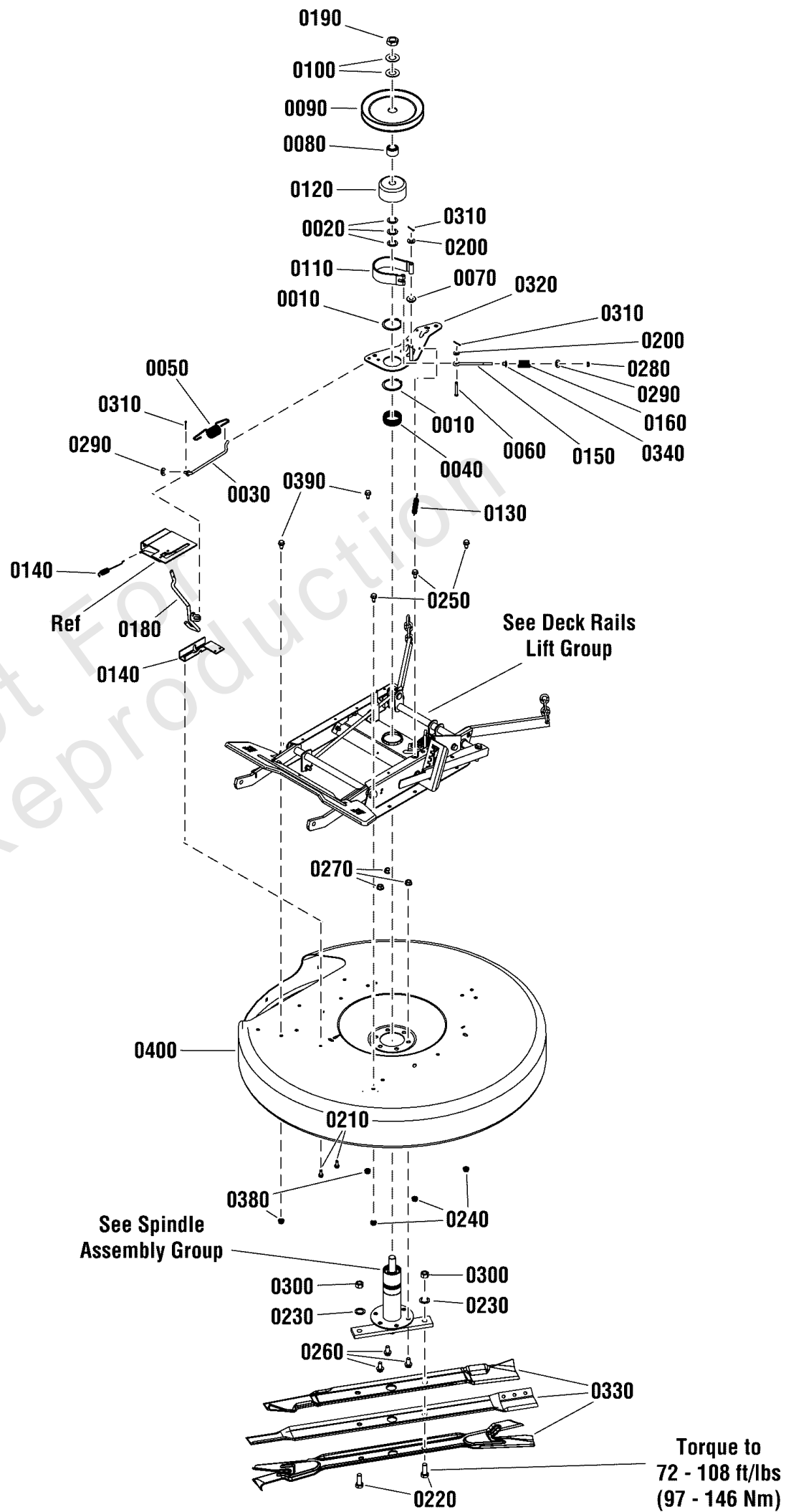
REF NO	PART NO	QTY	DESCRIPTION
0370	7301363BMYP	1	PLATE, 33" Deck Hinge Support -(Used on 33" only)
0380	7105326YP	1	CHUTE, Side Discharge, 28"/33"

Not For Reproduction

28" Mower Deck Clutch Assembly

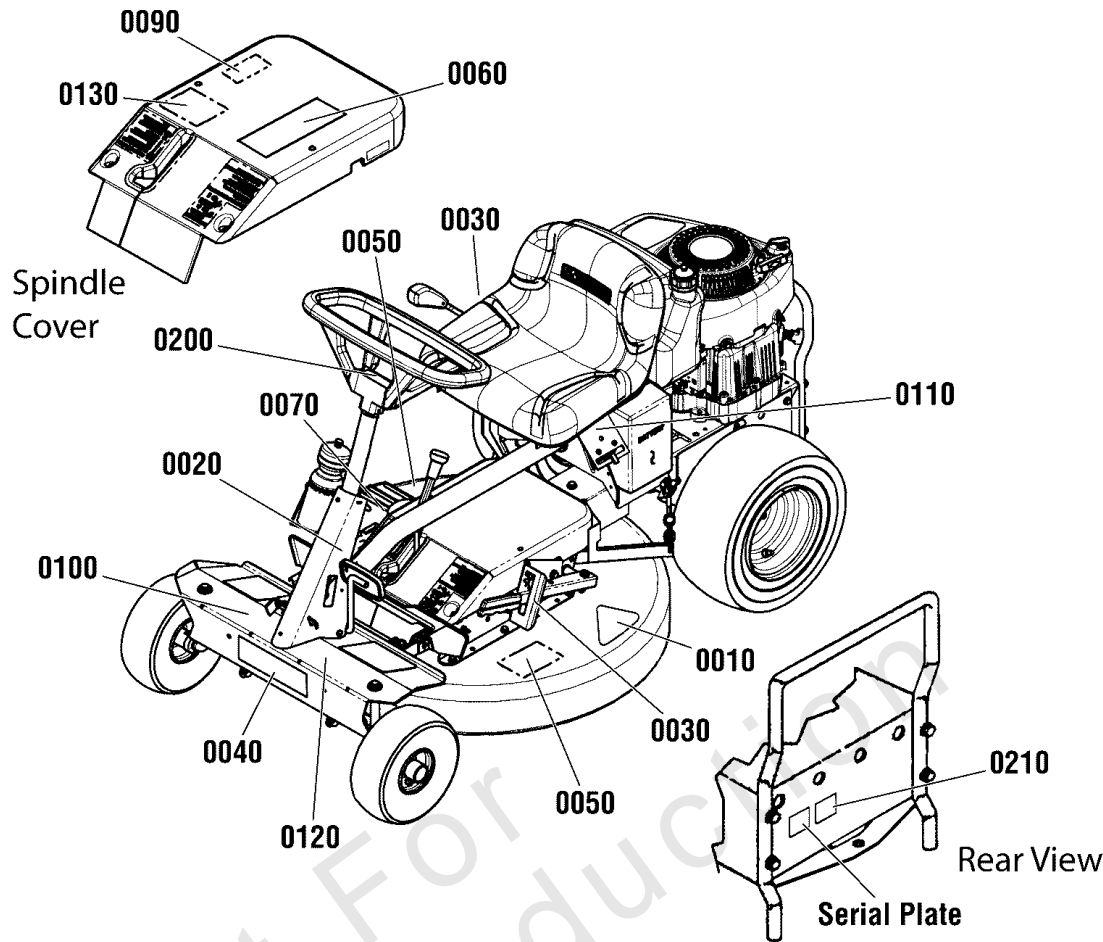
Note: Unless noted otherwise, use the standard torque specifications

Mfg. No: 2691525-00



28" Mower Deck Clutch Assembly

REF NO	PART NO	QTY	DESCRIPTION
0010	7010740YP	2	RETAINING RING, 2 External
0020	7010935SM	3	WASHER, Flat
0030	7012055YP	1	ROD, Idler Control
0040	7012670YP	1	RING, 2 ID x 3/4 High, Tolerance
0050	7014168YP	1	SPRING, Blade Handle
0060	7014304YP	1	PIN, 1/4 x 1-5/8 Clevis
0070	7014314YP	1	SPACER, .31 I.D. x .39 O.D. x 1 Nylon
0080	7015290YP	1	HUB, Pulley, PM
0090	7018781BMYP	1	PULLEY, Deck Spindle, 6.95 OD
0100	7032027SM	2	WASHER, 49/64x1-1/2x.06, Flat
0110	7600133YP	1	KIT, Brake Band, 10.1" L, 1.25" H (Formed)
0120	7035378YP	1	DRUM, Brake Spindle (3" OD, 1.6" Tall)
0130	7036521YP	1	SPRING, Extension, 4 x 1/2 Diameter
0140	7038021YP	1	MOUNT, Handle/Switch
0150	7046677YP	1	EYE-BOLT, 1/4-20 x 4"
0160	7046782YP	1	SPRING, Rectangular Wire Die, Blue
0180	7059254YP	1	WELDMENT, Blade Engagement Handle
0190	7074467SM	1	NUT, 3/4-16 Hex Jam, GR 8
0200	703590	1	WASHER, .406
0210	703054	2	SCREW, Hex Washer Head, 1/4-20 x 5/8
0220	7090491YP	2	SCREW, 1/2-20 x 1-1/4" Hex Head Cap, GR5
0230	7090509YP	2	WASHER, 1/2 Internal Tooth Lock, BZ
0240	703409	3	NUT, Serrated Lock Flange, 5/16-18
0250	703823	3	BOLT, 5/16-18 x 5/8 Hex Flange lock, GR 5, YZ
0260	703955	3	BOLT, 3/8-16X0.75, Serrated Flange
0270	703333	3	NUT, 3/8-16, Flanged Lock, GR5
0280	703419	1	NUT, 1/4-20 Hex Top Lock, Zinc/Clear
0290	703332	3	WASHER, Flat, 1/4
0300	7091939YP	2	NUT, 1/2-20 Hex, GR 5 ZP
0310	703312	3	PIN, Cotter, 3/32 X 3/4
0320	706001	1	WELDMENT, Idler Arm, RER
0330	7016980BZYP	1	BLADE, 28" Mulcher -(Standard On Euro Models)
0330	7019515BZYP	1	BLADE, 28" (Standard 3 Hole Air Lift) -(Standard On US Models)
0330	7104083BZYP	1	BLADE, 28" Recycling Ninja -(Optional)
0340	7014343YP	1	BUSHING, Flange .27 ID x .35 x .4, Nylon, Black
0350	7035728BMYP	1	BRACKET, Fixed Idler
0360	7036526BMYP	1	BRACE, Fixed Idler
0370	703985	5	SCREW, Hex Washer Head, Taptite, 5/16-18 x 1/2
0380	703233	2	NUT, Serrated, Flange, 1/4-20, GR5
0390	1935450SM	2	CAPSCREW, Hex Flange Head, 1/4-20 x 3/4, G5
0400	7061970YP	1	KIT, 28" Deck Replacement, Red (Includes Decals)



DANGER

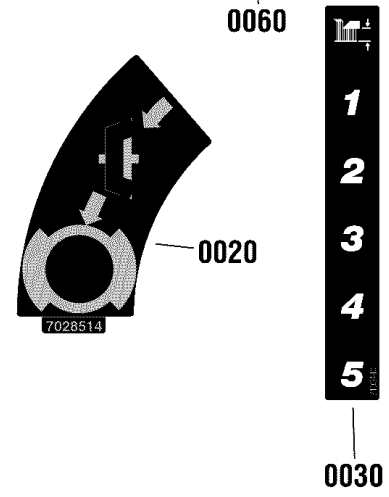
Amputation hazard
 Rotating blades cut off arms and legs.
 • Stop the mower when children or others are near.
 • Do not carry riders (especially children) even with the blades off. They may fall off or return for another ride when you are not expecting it.
 • Look down and behind before and while backing.

Loss of control and roll-over hazard.
 Operating on slopes can be hazardous and cause loss of control and roll-overs.
 • Avoid sudden turns or rapid speed changes.
 • Reduce speed and use extreme caution on slopes.
 • Go up and down slopes, NOT across.
 • Do not operate on slopes over 10 degrees.
 • If machine stops while going uphill, stop the blades and back down slowly.

Water, retaining walls and drop-off hazards
 Wheels dropping over edges may result in serious injury, death or drowning.
 • Do NOT operate near water, retaining walls or drop-offs.
 • Give yourself a minimum of two mower widths of clearance around these hazards.

WARNING

Avoid serious injury or death
 Read operator's manual before using this product.
 • Do NOT operate this machine unless you are trained.
 • Know the location and function of all controls.
 • Keep safety devices (guards, shields, switches, etc.) in place and working.
 • Remove objects that could be thrown by the blade.
 • Be sure blades and engine are stopped before placing hands or feet near blades.
 • When leaving machine, shut off, remove key and set parking brake.



WARNING

Machine is heavy and if incorrectly lifted can cause serious injury. Use a team lift to stand machine on end.

0120

DANGER

Amputation and thrown objects hazard

- Keep hands and feet away from deck.
- Do not operate mower unless discharge chute or entire grass catcher is in its proper place.

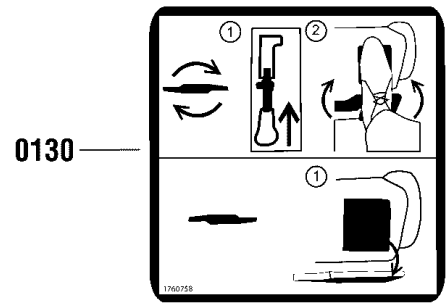
0050

WARNING

Fire Hazard
 Gasoline is flammable. Debris is combustible.

- Allow engine to cool for at least 3 minutes before refueling.
- Do not fill tank above bottom of filler neck.
- Keep unit cleaned of debris.
- This equipment may create sparks that can start fires around dry vegetation. A spark arrester may be required. Contact local fire agencies for regulations relating to fire prevention requirements.

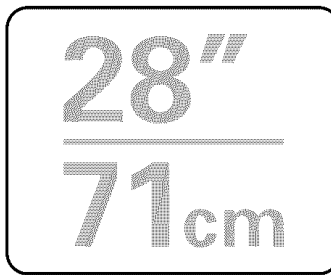
0110



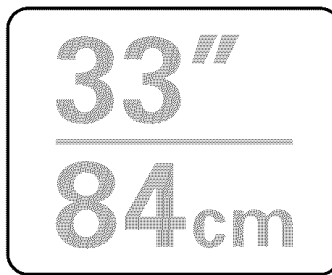
0130



0100



0010



0010

EMISSION CONTROL INFORMATION
 BRIGGS & STRATTON CORPORATION
 EPA EVAP FAMILY # KES5PHNE0YF9
 THIS EQUIPMENT MEETS
 US EPA 2010 EVAP STANDARDS
 FOR SMALL OFF-ROAD ENGINES
 NOT FOR SALE IN CALIFORNIA
 DOM# 83119 80078230

0210



0200



0040

MOWER BELTS AND BLADES

28" MOWER	
MOWER BELT	7022252YP
MOWER BLADE	7104083BZYP
33" MOWER	
MOWER BELT	7043844YP
MOWER BLADE	7024741AYP

USE ONLY GENUINE SNAPPER REPLACEMENT PARTS TO ASSURE THAT ORIGINAL STANDARDS ARE MAINTAINED.

80077183

0090

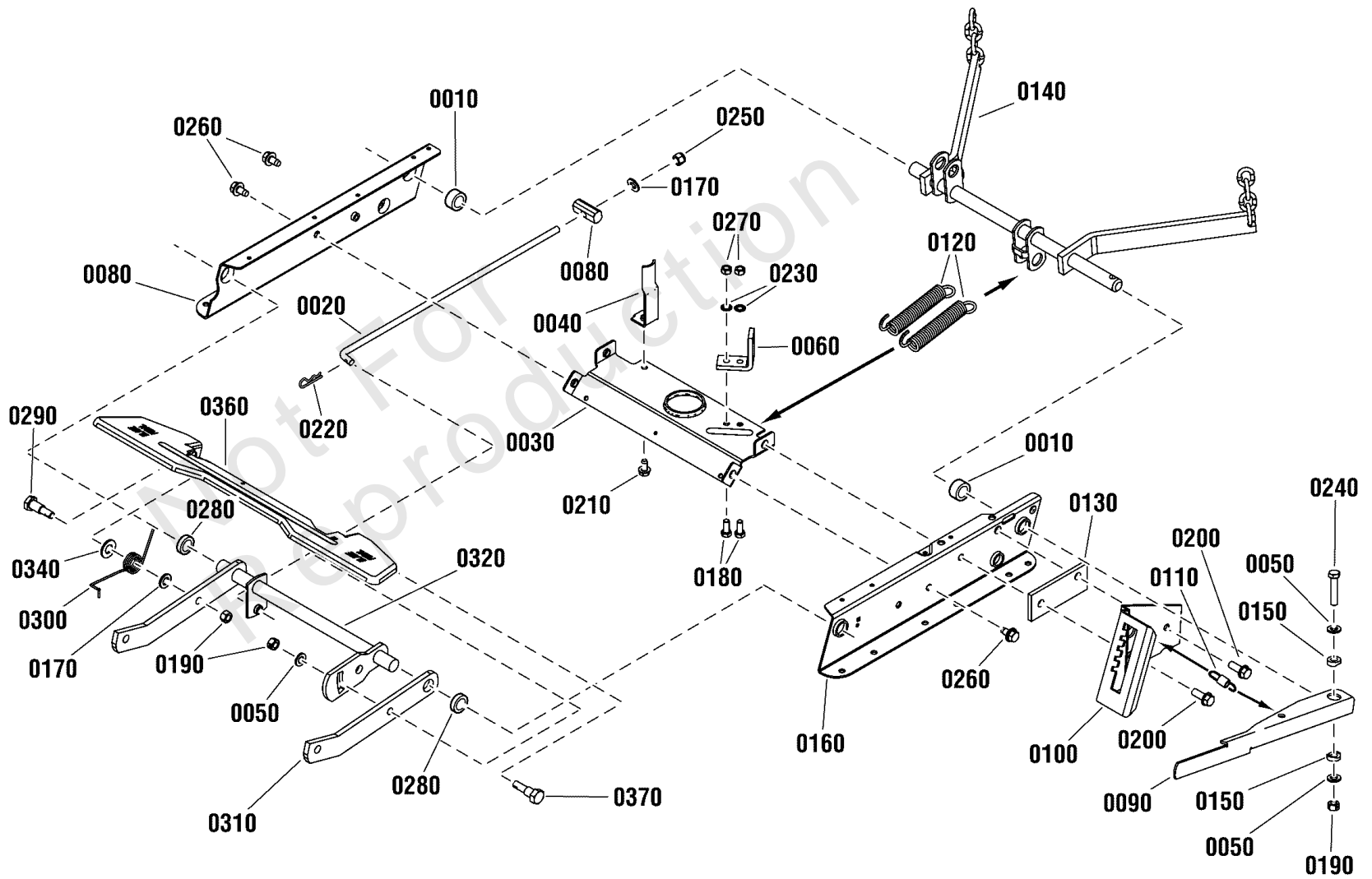
Decals Group

REF NO	PART NO	QTY	DESCRIPTION
0010	1755710YP	1	DECAL, 28IN/71CM, Mower Width
0010	1755713YP	1	DECAL, Mower Width 33" / 84CM
0020	7028514YP	1	DECAL, Clutch Brake
0030	7103440YP	1	DECAL, Height-Of-Cut, Symbol, RER
0040	84003103	1	DECAL, Snapper Logo 13" X 3.3"
0050	7101665YP	2	DECAL, Danger
0060	84003509	1	DECAL, Safety Warning, RER
0080	7103219YP	1	DECAL, ID, Parking Lock
0090	84003346	1	DECAL, Service Parts
0100	7104796YP	1	DECAL, Reverse Lockout, RER
0110	7105772YP	1	DECAL, Fuel Warning
0120	84003510	1	DECAL, Team Lift, RER
0130	1760758YP	1	DECAL, Blade Engagement
0200	84002249	1	DECAL, Snapper Logo, 3.1" X .8"
0210	-----	1	DECAL, EVP, 49 State -(Not A Sellable Item)

Deck Rails & Lift Group

Note: Unless noted otherwise, use the standard torque specifications

Mfg. No: 2691525-00



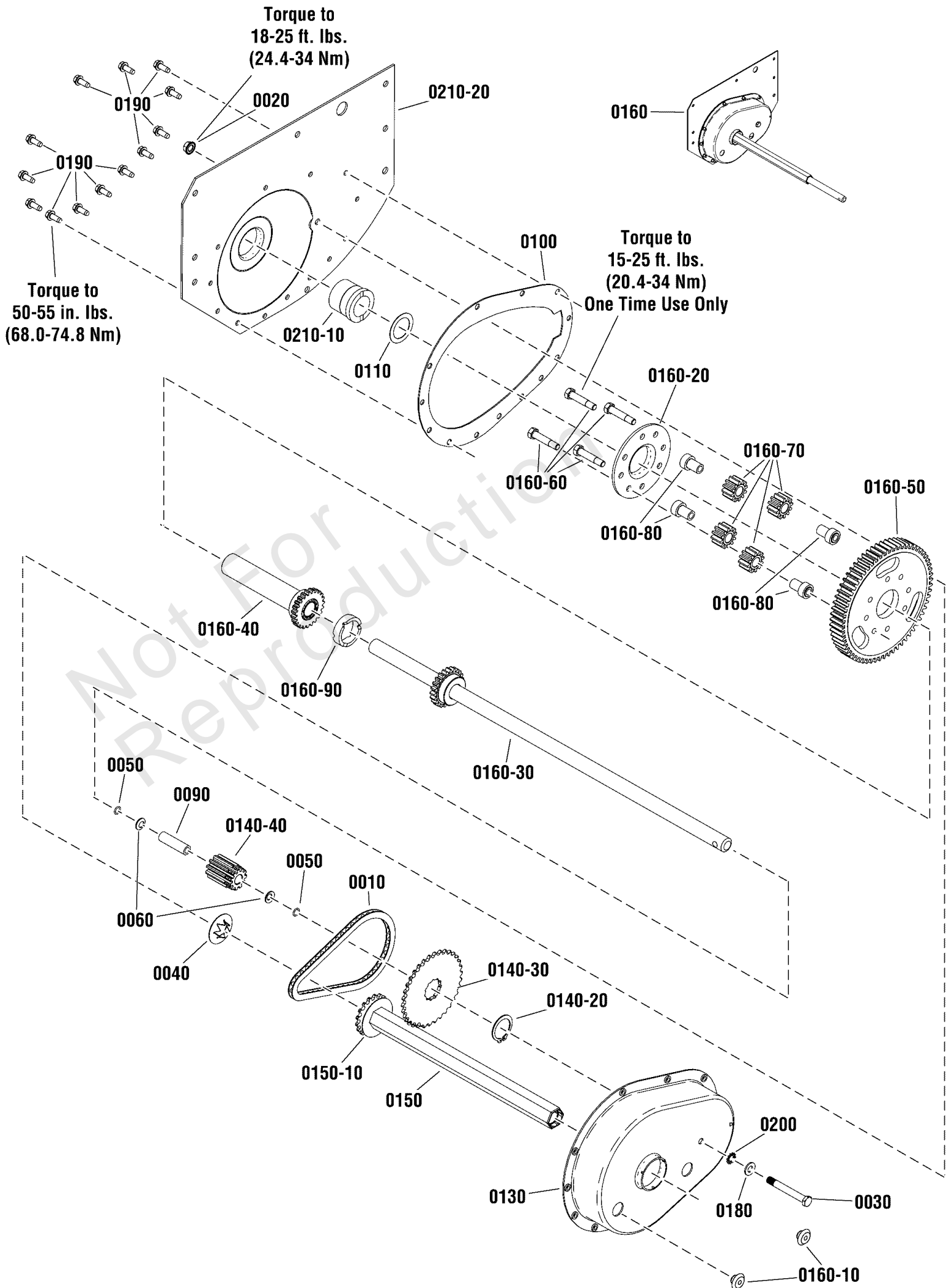
Deck Rails & Lift Group

REF NO	PART NO	QTY	DESCRIPTION
0010	84002655	2	SPACER, Rear Lift Arm, .775 ID, .665 Thick, PM
0020	7016122YP	1	ROD, Leveling (3/4-24 thread)
0030	7031838BMYP	1	BRACE, Top Rail
0040	7031855YP	1	GUIDE, Belt
0050	7032030SM	3	WASHER, .41 I.D. x 1.25 O.D. x .132 Flat
0060	706321	1	ANCHOR
0070	7034213YP	1	PIVOT, Leveling
0080	84003047	1	RAIL, Deck Lift, RH, BLK
0090	7046155YP	1	LEVER, Height of Cut
0100	7046157YP	1	DETENT, Height Adjustment
0110	7046159YP	1	SPRING, Lever (1.7" LG, .5" OD)
0120	7046163YP	2	SPRING, Assist
0130	7046217YP	1	SPACER, Detent
0140	7059324YP	1	WELDMENT, Rear Lift Arm
0150	7071920YP	2	SPACER, Deck Lift Handle
0160	7073269BMYP	1	RAIL DECK LIFT LH E
0170	703590	3	WASHER, .406
0180	703336	2	SCREW, 5/16-24 x 3/4 Hex Head Cap, GR 5
0190	703458	3	NUT, 3/8-24 Hex Center Lock, GR B, YZ
0200	704000	2	SCREW, Hex Washer Head, Taptite, 3/8-16 x 1
0210	703949	1	SCREW, Washer Head, 5/16-18 X 5/8
0220	703300	1	PIN, Hair, 3/32 x 1 5/8
0230	703587	2	WASHER, 5/16, Internal Lock, Zinc/Clear
0240	703866	1	SCREW, 3/8-24 x 1-3/4" Hex Head Cap, GR 5
0250	703901	1	NUT, 3/8-24 Hex Nyloc ZP
0260	7091198SM	3	SCREW, Hex Washer Head, Self Tap, 3/8-16 x 5/8
0270	703233	2	NUT, Serrated, Flange, 1/4-20, GR5
0280	84002653	2	SPACER, Front Lift Arm, 1.25 OD, .775 ID, .480 Thick, PM
0290	7015446YP	1	BOLT, 3/8-24 X 9/16, 1/2 Dia. Shoulder, ZP
0300	7015448YP	1	SPRING, Pedal
0310	7032997YP	1	ARM, Front Lift
0320	7058041YP	1	WELDMENT, Front Lift Arm
0340	704123	1	WASHER, 1/2 Flat
0360	7073267YP	1	FOOT PEDAL, Blade Stop Control
0370	7015495YP	1	BOLT, 3/8-24 X .73, 1/2 DIA., Shoulder, ZP

Differential Assembly

Note: Unless noted otherwise, use the standard torque specifications

Mfg. No: 2691525-00



Differential Assembly

REF NO	PART NO	QTY	DESCRIPTION
0010	7010941YP	1	CHAIN, 46 Pitch (#35 Endless)
0020	703123	1	NUT, 5/16-24, Serated Flange, Zinc/Clear, GR5
0030	7011042YP	1	SCREW, 5/16-24 x 2-5/8 Hex Head Cap, ZP
0040	7011072YP	1	WASHER, Thrust, (Hex Flanged)
0050	7011156YP	2	O-RING, 5/16"
0060	7011782YP	2	WASHER, 5/16 X 5/8 X .05, Belleville
0090	7021128YP	1	SPACER, .50 OD X .031 ID X 1.75 Long, Heat Treated
0100	7028762YP	1	KIT, Gasket
0110	7031079YP	1	WASHER, Thrust (1.37 ID, 1.625 OD)
0130	7037279YP	1	CASE, Transmission
0140	7050257YP	1	ASSEMBLY, Gear & Sprocket
0140-20	7010965YP	1	RING, 1-3/16 External Retaining
0140-30	7021129YP	1	SPROCKET, 34T, 3/8P
0140-40	7200128YP	1	GEAR, 11 Tooth, 10 Pitch, PM
0150	7051584YP	1	ASSEMBLY, Drive Hex Tube 13.2 Long, DX
0150-10	7010988YP	1	WASHER, Hex Nylon Splash
0160	7600229YP	1	* KIT, Differential Assembly
0160-10	7011024YP		PLUG, 3/4 Hole
0160-20	7038067YP	1	PLATE, Differential, Heat Treated (8 holes)
0160-30	7075479YP	1	KIT, 23 Tooth Long Axle & Spacer (Includes 7047763 Axle & Spacer 7074431)
0160-40	7600137YP	1	KIT, Short Axle Assembly, 23 Tooth
0160-50	7021158YP	1	GEAR, 63 Tooth 10 Pitch (4 Hole)
0160-60	7012333YP	4	BOLT, 5/16-24 x 1-5/8 Hex Nylock, G5, Black
0160-70	7021127YP	4	GEAR, Differential Pinion (12T, 12P)
0160-80	7022115YP	4	SPACER, Pinion
0160-90	7074431YP	1	SPACER, Long & Short Axle (1.25 ID x .425 Wide)
0180	703350	1	WASHER, 5/16, Flat SAE, Zinc/Clear
0190	703054	13	SCREW, Hex Washer Head, 1/4-20 x 5/8
0200	703138	1	WASHER, External Lock, 5/16
0210-10	7012296YP	1	BEARING, Axle, 1.126 ID, 1.626 OD, PM
0210-20	7301301YP	1	FENDER, RH, 1.615 Hole, RER-RE

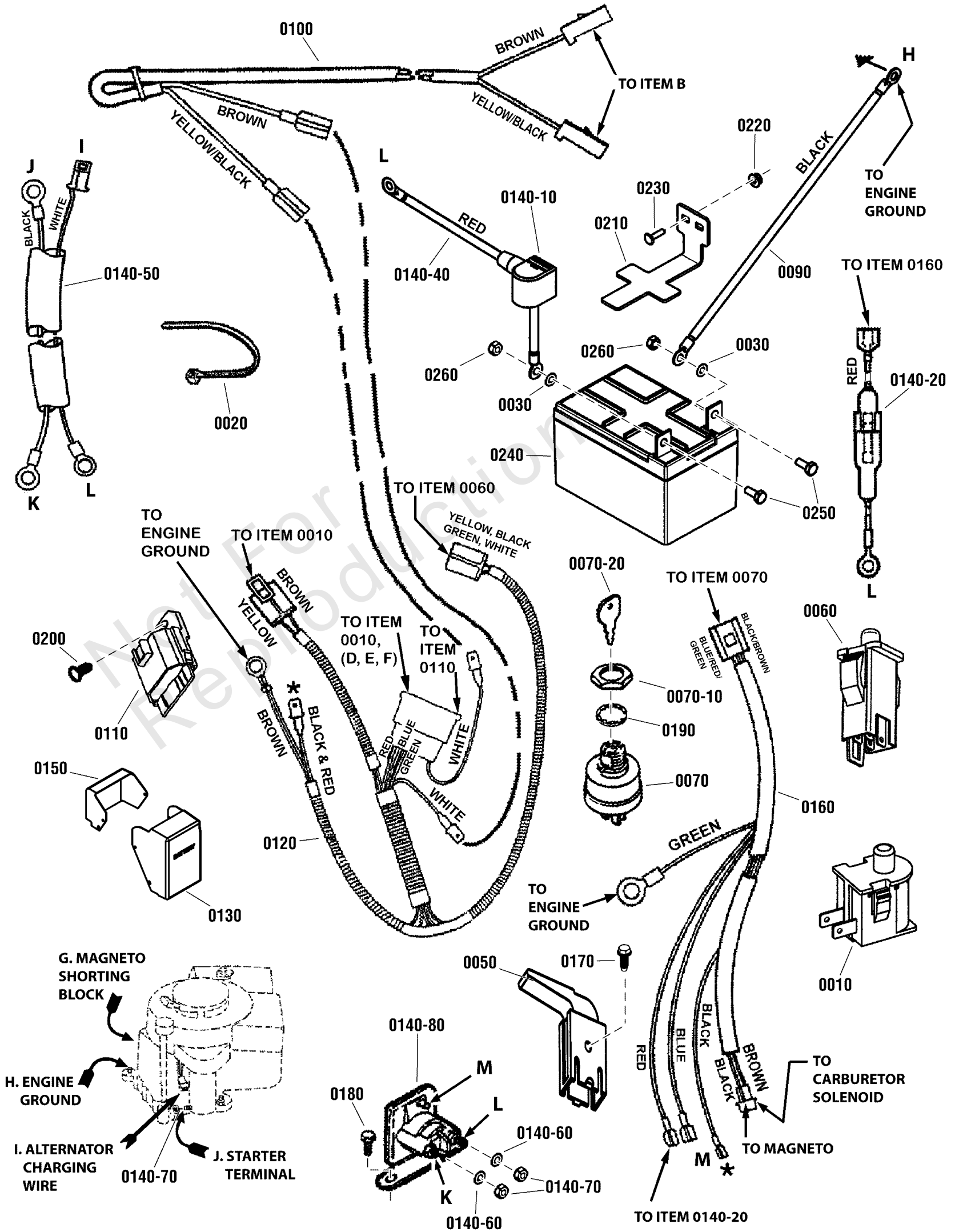
Footnotes:

* Kit also includes Boots, Clamps, Plugs, Shims, Washers & Instructions

Electrical Group

Note: Unless noted otherwise, use the standard torque specifications

Mfg. No: 2691525-00



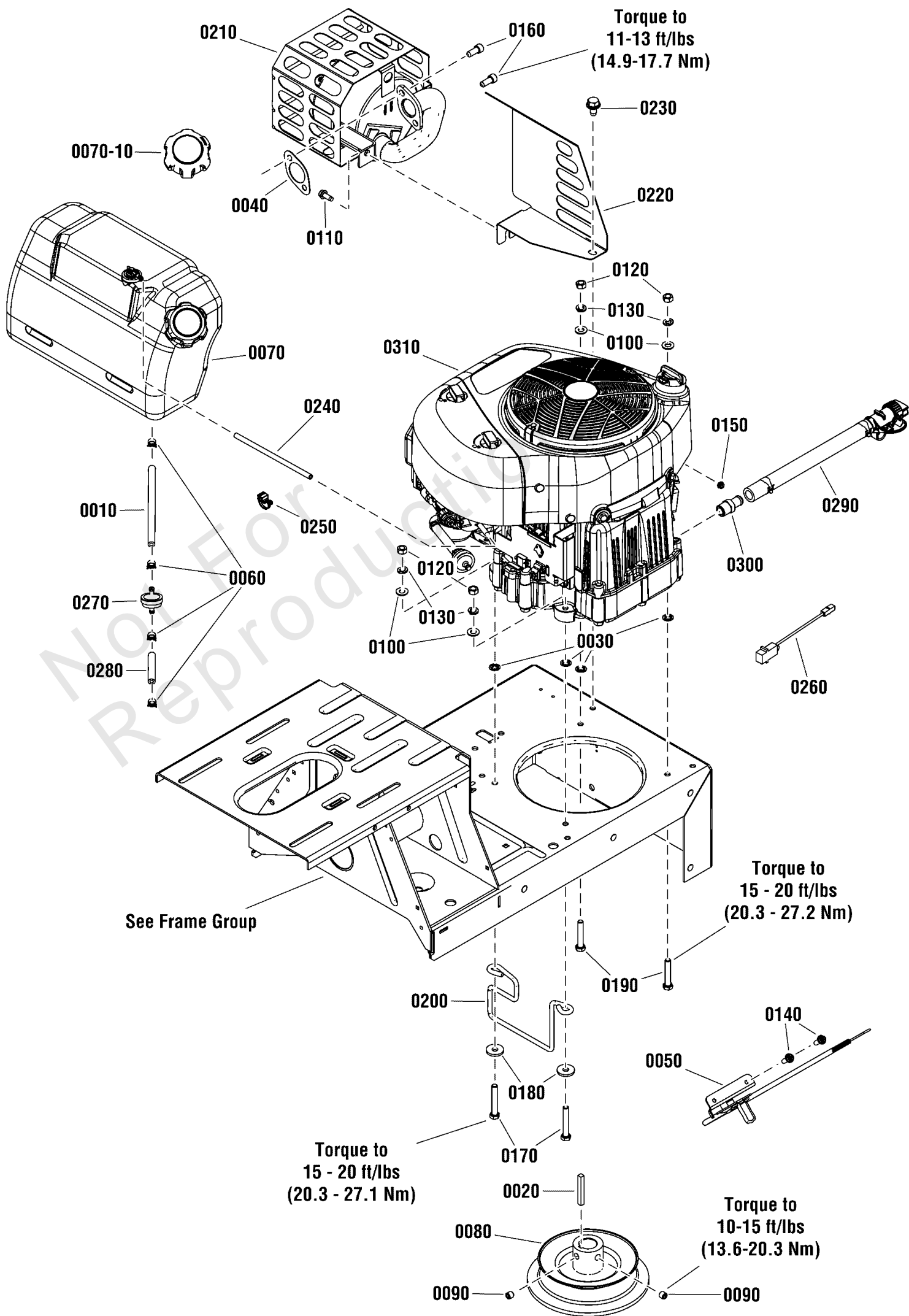
Electrical Group

REF NO	PART NO	QTY	DESCRIPTION
0010	7023354YP	1	SWITCH, Seat, Push Button (NC)
0020	703586	4	TIE, 7, Self Locking
0030	703826	2	RETAINER, 1/4", Pushnut
0050	7018524YP	1	SWITCH, Deck Interlock (NO)
0060	7022886YP	1	SWITCH, DP, NO/NC, Snap-In
0070	7026343SM	1	SWITCH, Ignition-Afterfire Solenoid
0070-10	7015438YP	1	NUT, 5/8-32 Hex
0070-20	1737837YP		KEYS, Blister Pk (Kids+MWRS Don't Mix) English/French (set of two, one coated)
0090	7028027YP	1	CABLE, Battery, 8 Gauge, Black, 14", 1/4" Terminals
0100	7028386YP	1	HARNESS, Deck Interlock Wiring
0110	7028606YP	1	INTERLOCK MODULE, Briggs
0120	7028675YP	1	WIRE HARNESS, B&S (13.5, 14.5 & 17.5)
0130	7028990YP	1	COVER, Battery
0140-10	1677296SM	1	BOOT, Insulator, Battery Termnal, Red
0140-20	7016168YP	1	HOLDER, Fuse (Includes Fuse #7016168YP)
0140-40	7019326YP	1	WIRE, Positive, 17" Long, 8 AWG, 1/4" Terminal Holes, Red
0140-50	7022788YP	1	WIRE HARNESS, Starter
0140-60	703462	2	WASHER, 1/4 Internal Tooth Lock, YZ
0140-70	703127	2	NUT, 1/4-20, G5 Zinc/Clear
0140-80	7075671YP	1	SOLENOID, 12V, Super Trombetta, RER
0150	7073268YP	1	COVER, Solenoid
0160	7074406YP	1	WIRE HARNESS, Ignition Switch, 13.5, 14.5, 17.5 B&S
0170	7090299YP	1	SCREW, #10F X1, GR2, Hex Washer Self-Tap, ZP
0180	704130	2	SCREW, 1/4-20 X .500, Hex HD, Self-Tap, Zinc/Clear
0190	1960547SM	1	WASHER, 5/8 Internal Tooth Lock
0200	7091272YP	7	FASTENER, 1/4 x 3/4 Ratchet
0210	7301200BMYP	1	BRACKET, Battery, RER
0220	703917	1	NUT, #10-24, Hex Flanged Whiz Lock, ZC
0230	7900056YP	1	BOLT, #10-24 X 3/4, Carriage, GR2, YZ
0240	7600188YP	1	BATTERY, 12V 20HR: 190CCA, Sealed (3.9" W, 5.9" L, 4 to 4.7" H)(Includes Cable Attachment Hdwe.)

Engine Group

Note: Unless noted otherwise, use the standard torque specifications

Mfg. No: 2691525-00



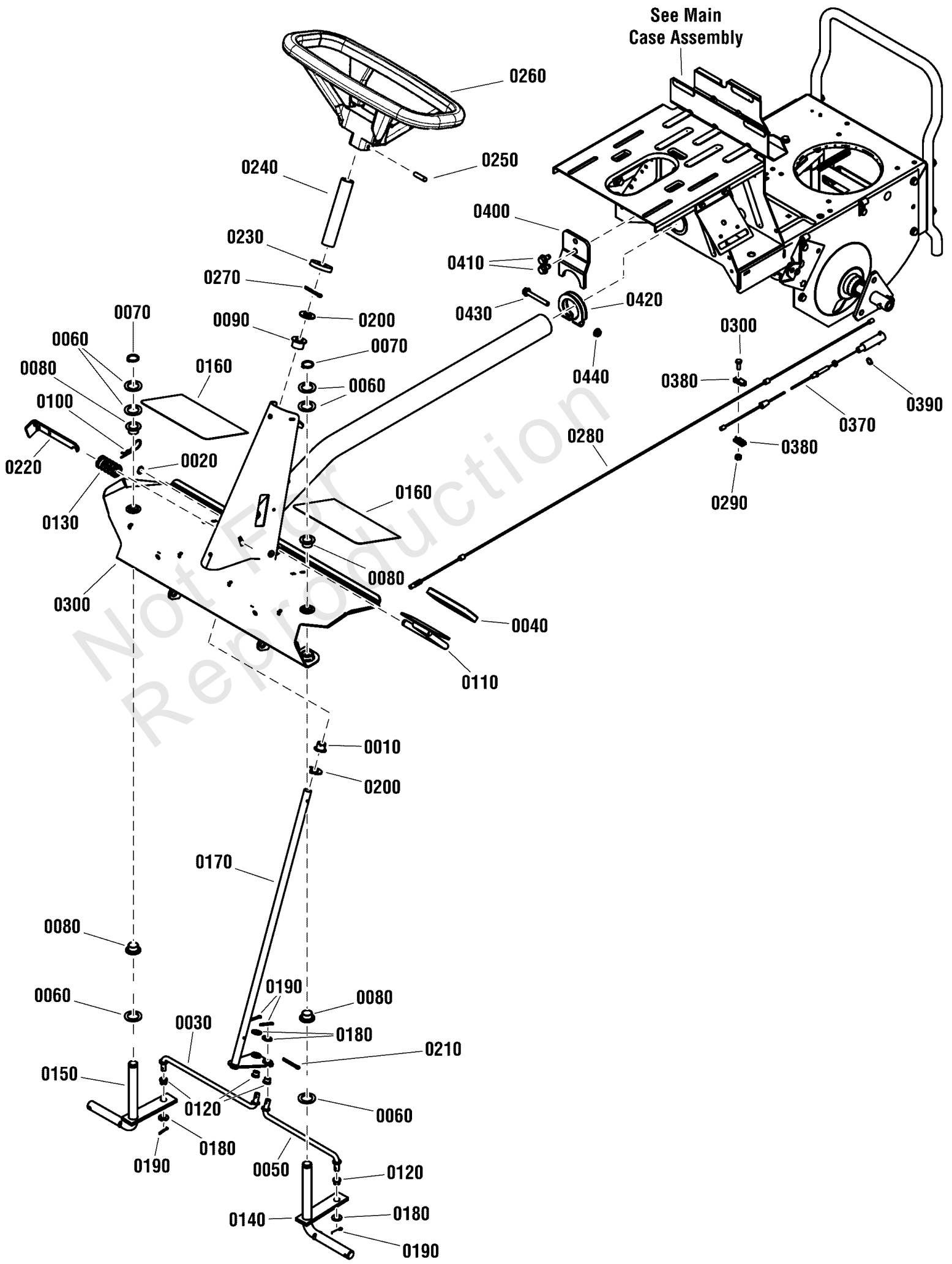
Engine Group

REF NO	PART NO	QTY	DESCRIPTION
0010	791766	1	LINE, Fuel
0020	703890	1	KEY, 1/4 Square x 2 Long
0030	703297	4	RETAINER, 5/16 X 5/8
0040	7105352SM	1	GASKET, Exhaust
0050	7022751YP	1	CONTROL, Throttle (23.6" long) (Briggs Engines)
0060	791850	4	CLAMP, Hose
0070	84002729	1	ASSEMBLY, Fuel Tank, Includes Cap, Flourinated
0070-10	84003008	1	CAP, Fuel Tank, Includes Tether
0080	7072658YP	1	DRIVE DISC, Steel, (4.56" P.D., 5.75 O.D. Pulley) -(28" Model)
0080	7074187YP	1	DISC, Steel Drive, (4.0" P.D., 5.15" O.D. Pulley) -(33" Model)
0090	7090132YP	2	SET SCREW, 3/8-16 x 3/8 Hex Recess Set
0100	703350	4	WASHER, 5/16, Flat SAE, Zinc/Clear
0110	703054	1	SCREW, Hex Washer Head, 1/4-20 x 5/8
0120	703465	4	NUT, 5/16-18, GR5
0130	703116	4	WASHER, Split Lock, .32 x .58 x .08
0140	84002839	2	BOLT, 5/16-18X1.750, Hex Flng
0150	703127	1	NUT, Hex, 1/4-20
0160	7091738SM	2	SCREW, Allen Socket Head, 5/16-18 x 3/4, GR8
0170	704062	2	BOLT, Serrated Flanged Head, 5/16-18 X 2.0
0180	703298	2	WASHER, 5/16
0190	704060	2	SCREW, Hex Washer Head, Self Tap, 10-24 x 1/2
0200	7105172BMYP	1	GUIDE, Belt, 1/4" Wire, 1.85" X 4.74" ID, 3.72" Tall, 5.74" Mount -(28" Model)
0200	7105173BMYP	1	GUIDE, Belt, 1/4" Wire, 1.45" X 5" ID, 3.72" Tall, 5.74" Mount -(33" Model)
0210	706121	1	MUFFLER w/Guard (Briggs 17.5HP)
0220	706122	1	SHIELD, Manifold, RER
0230	7091198SM	1	SCREW, Hex Washer Head, Self Tap, 3/8-16 x 5/8
0240	315826	1	HOSE, VAPOR, 5MM ID, 20.00 LG (Cut To Length)
0250	84003009	4	EDGECLIP, Ziptie
0260	1723320SM	1	WIRE ASSEMBLY, Briggs & Stratton
0270	394358S	1	FILTER, Fuel
0280	791766	1	LINE, Fuel
0290	594200	1	HOSE, Oil Drain
0300	796532	1	CONNECTOR, Hose
0310	21R877-0086-G1	1	* ENGINE, B&S Intek Series 3130, Mod. #21R877-0086-G1 -(28" Model)
0310	31R777-0052-G1	1	* ENGINE, B&S Intek Series 4175, Mod. #31R777-0052-G1 -(33" Model)

Front End Group

Note: Unless noted otherwise, use the standard torque specifications

Mfg. No: 2691525-00



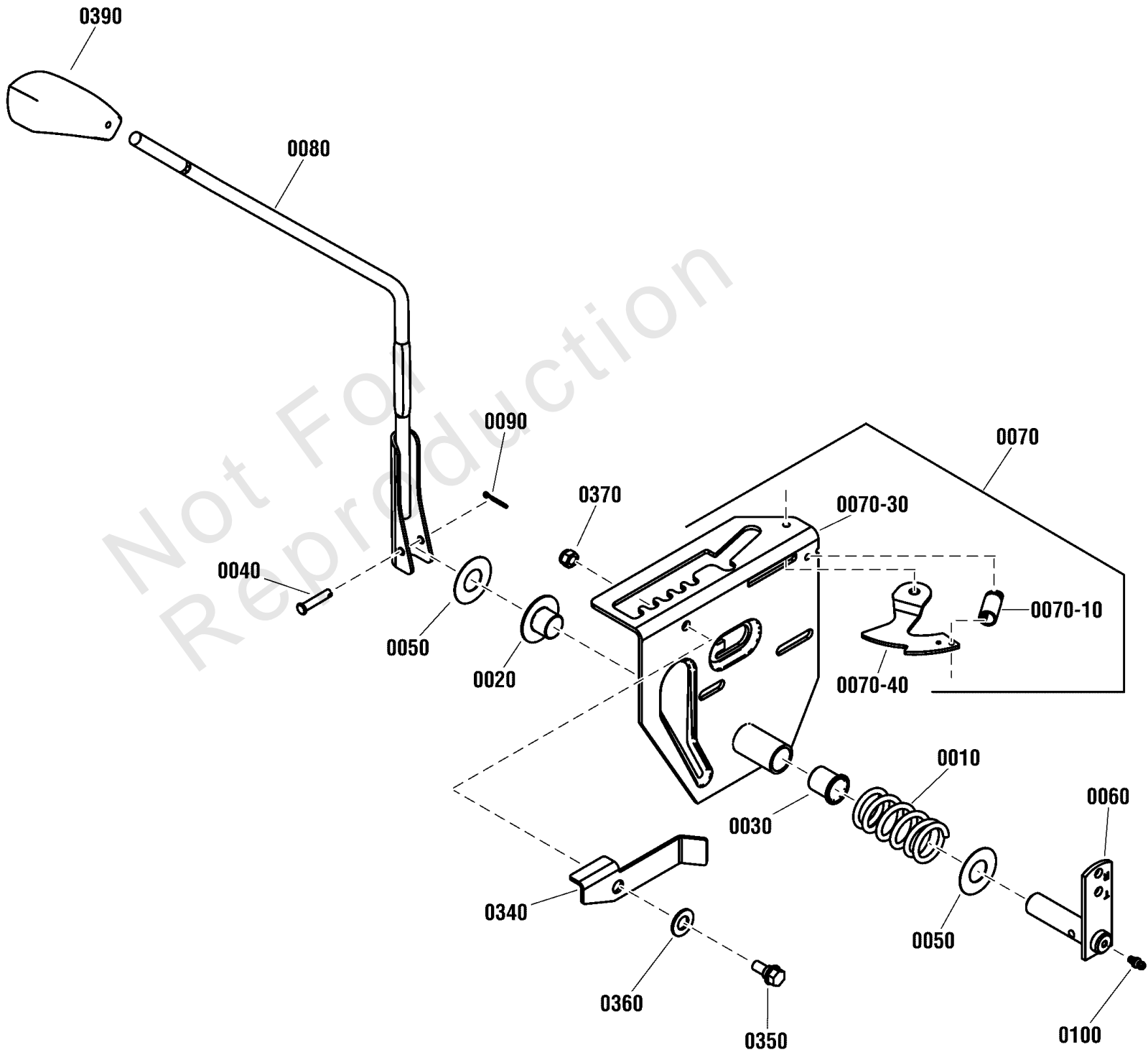
Front End Group

REF NO	PART NO	QTY	DESCRIPTION
0010	7010694YP	1	BUSHING, Flanged Nylon, .63 ID, .692 OD, .625 Tall
0020	7010776YP	1	RING, 1/2" External Retaining
0030	7012933YP	1	TIE ROD, Right Hand (7.41" long) -(28" Models)
0030	7012540YP	1	TIE ROD, RH, 9.91" Long -(33" Models)
0040	1760416YP	1	PAD, Clutch/Brake Pedal (No Markings)
0050	7013023YP	1	TIE ROD, Left Hand (7.41" long) -(28" Models)
0050	7012541YP	1	TIE ROD, LH, 9.91" Long -(33" Models)
0060	703151	6	WASHER, .766 ID X 1.06 OD X .07
0070	703975	2	RETAINING RING, 3/4" ID, ZC/CL
0080	7010986YP	4	BEARING, Flanged Nylon, .760 ID, .830 OD, .563 Tall
0090	7046158YP	1	BUSHING, Flanged Nylon Steering Upper, .63 ID, .97 OD, .66 Tall
0100	7011714YP	1	HAIR PIN, 2.25, .094, ZP
0110	7047888BMYP	1	WELDMENT, Clutch/Brake Pedal
0120	7013321YP	4	BUSHING, Flanged Tie Rod, .385 ID, .508 OD, .39 Tall
0130	7015444YP	1	SPRING, Parking Brake Latch
0140	1760945BMYP	1	WELDMENT, King Pin, Left Hand, Black
0150	1760946BMYP	1	WELDMENT, King Pin, Right Hand, Black
0160	7105143YP	2	FOOTPAD, Wide (5.5 x 8.0)
0160	7105147YP	2	FOOT PAD, Short (5.5 x 4.7)
0170	7046232YP	1	WELDMENT, Steering Shaft, Black
0180	703590	4	WASHER, .406
0190	703958	4	PIN, 1/8 X 0.75, Cotter, Zinc/Clear
0200	7090183YP	2	WASHER, Flat, .656X1.312X.094, ZC/CL
0210	703983	1	PIN, Cotter
0220	7038243YP	1	LATCH, Parking Brake
0230	7023671YP	1	COVER, Steering Shaft
0240	7023667YP	1	COVER, Foam, Steering Shaft
0250	7013862YP	1	ROLL PIN, 1/4 x 1-1/2"
0260	7501813YP	1	ASSEMBLY, Steering Wheel (for 5/8" shaft)
0270	7090296YP	1	PIN, 3/16 x 1" Cotter
0280	7022449YP	1	CABLE, 28" Clutch/Brake, 54.32 Long -(28" Models)
0280	7074131YP	1	CABLE, 33" Clutch/Brake, 55" Long -(33" Models)
0290	703954	1	NUT, Centerlock, 1/4-20, GR5
0300	703925	1	CAPSCREW, Hex Head, 1/4-20 x 5/8, GR5
0370	7101192YP	1	CABLE, Brake, Snap-In
0380	7034174YP	2	CONNECTOR, Cable (Single Part)
0390	7012313SM	1	RETAINING RING, .375, External
0400	7074210YP	1	BRACKET, Belt Adjuster
0410	703950	2	SCREW, Hex Washer Head, Thread Roll, 5/16-18 X 5/8
0420	7031100YP	1	CLAMP, Tube
0430	7090358YP	1	SCREW, 5/16-24 x 2-1/2" Hex Head Cap, GR 5
0440	704279	1	NUT, 5/16-24 Hex Flange Lock, BZ

Gear Shifter Assembly

Note: Unless noted otherwise, use the standard torque specifications

Mfg. No: 2691525-00



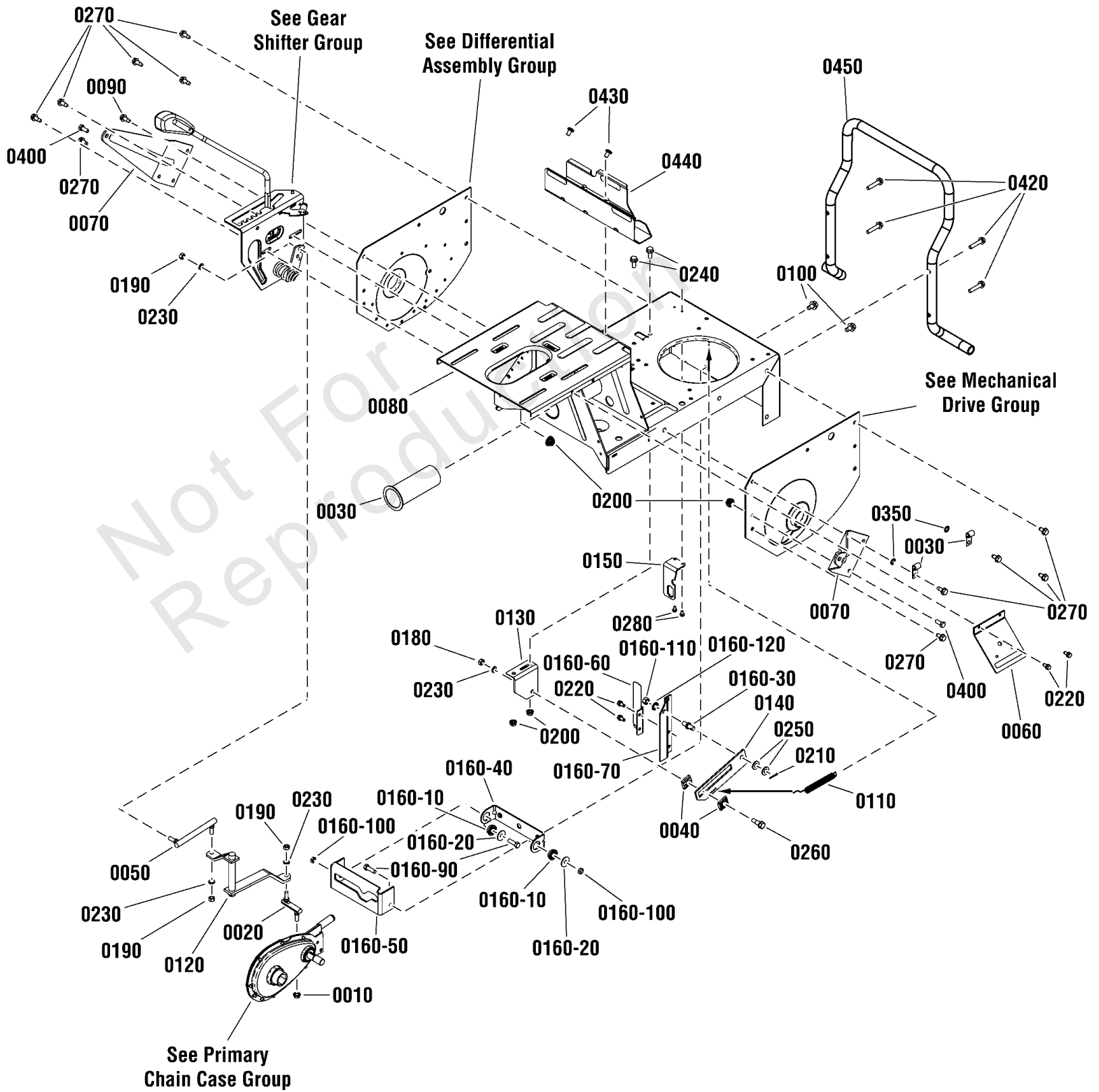
Gear Shifter Assembly

REF NO	PART NO	QTY	DESCRIPTION
0010	7010754YP	1	SPRING, Shift Detent
0020	7019245YP	1	BUSHING, 3/4 ID, 1.62 Flange (Nylon)
0030	7019246YP	1	BUSHING, 3/4 ID, 1 Flange (Nylon)
0040	7023914YP	1	PIN, Clevis, .25 X 1.25 YZ
0050	7031036YP	2	WASHER, Thrust .76 ID, 1.62 OD, .025 Thick
0060	7043201BMYP	1	WELDMENT, Shift Arm
0070	7600139YP	1	ASSEMBLY, Shift Detent & Latch
0070-10	7026292YP	1	SPRING
0070-30	7041232YP	1	WELDMENT, Shift Detent
0070-40	7073218YP	1	STOP, Reverse, RER
0080	7059212BMYP	1	WELDMENT, Shift Handle
0090	703312	1	PIN, 3/32 X 3/4, GR5, Cotter, Zinc/Clear
0100	7010817SM	1	LUBE FITTING, No Check Ball (Press fit to .187" hole)
0340	7073289YP	1	LEVER, Over-Ride
0350	703839	1	BOLT, 5/16-18 X .750, Hex Washer Head Shoulder, Zinc/Clear
0360	703183	1	WASHER, .922 X .065 X .065, Flat, Zinc/Clear
0370	703902	1	NUT, 5/16-18, Hex Nylock, Zinc/Clear
0390	7023656YP	1	GRIP, Shift Handle

Main Case Assembly - US

Note: Unless noted otherwise, use the standard torque specifications

Mfg. No: 2691525-00



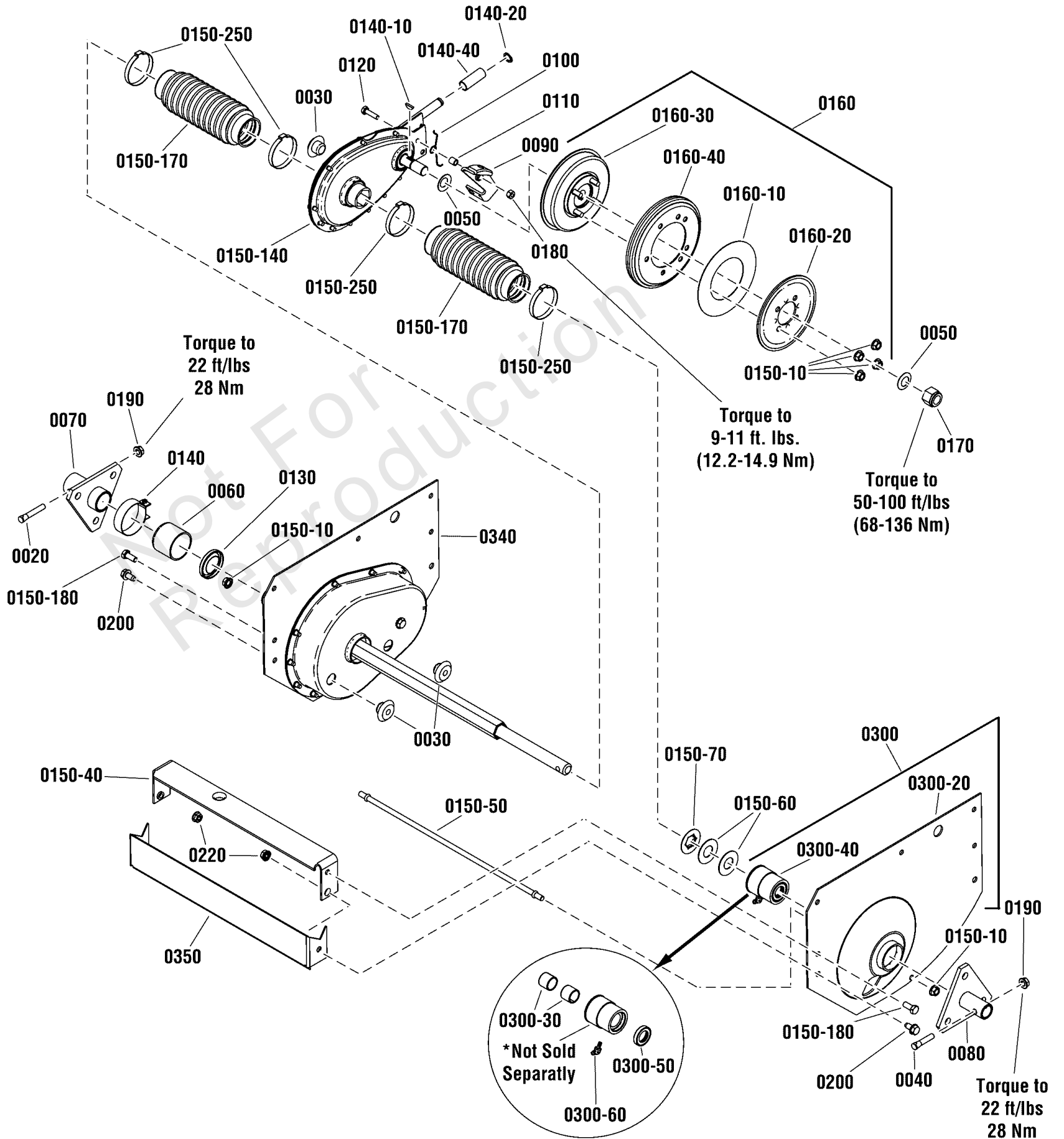
Main Case Assembly - US

REF NO	PART NO	QTY	DESCRIPTION
0010	80003580	1	NUT 5/16-24 GR5 HEX FLG SERRATED ZC/CL
0020	7011018	1	SHIFT LINK, Short (5/16-24 thread)
0030	7074650YP	1	BUSHING, Pivot, 1.89X5.88X.1
0040	7014663	2	SLIDE-HALF
0050	7023676	1	SHIFT LINK, Long (5/16-24 both ends)
0060	7033470D	1	PLATE, THROTTLE, RED
0070	7034299D	2	WING, REAR, RED
0080	7053697D	1	WELD, STD MAINCASE, RER, RED
0090	7090793	2	SCREW, 5/16-18 x 3/4" Hex Washer Self-Tap
0100	703950	2	SCREW, Hex Washer Head, Thread Roll, 5/16-18 X 5/8
0110	7013885	1	SPRING, Clutch & Brake
0120	7041384CJ	1	WELD, SHIFT ARM ECOAT, ECOAT EPOXY
0130	7047189CJ	1	BRKT, DRIVE SUPPORT BLACK
0140	7047190CJ	1	SLIDE, DRIVE SUPPORT BLACK
0150	7073735CJ	1	BRKT, SWITCH BLACK
0160-10	7011048	2	BEARING, YOKE (RIGHT HAND)
0160-20	7011763	2	WASHER, Fender, 5/16"
0160-30	7015464	1	STUD, 3/8-24 Thread
0160-40	7033291	1	COLLAR, Yoke
0160-50	7046162	1	LIFT, Yoke
0160-60	7059068	1	ASSEMBLY, Leaf Spring
0160-70	7073733	1	ARM, Yoke
0160-90	-----	2	SCREW, 5/16-18X0.750, GR5, WHIZ-LOCK, ZC
0160-100	80004410	2	NUT,5/16-24,HEX CROWN LOCK,GR C,ZC/CL
0160-110	80004865	1	NUT, 3/8-24, HEX, GR 5, ZINC/CLEAR
0160-120	80005380	1	WSHR,3/8,INT TOOTH LCK,TYPE A,ZC/CL
0180	-----	1	NUT, 5/16-18 Hex, GR 5 or B, YZ
0190	80002726	3	NUT, 5/16-24, GR5
0200	80002728	4	NUT, Flange, 5/16-18
0210	80002736	1	PIN, 3/32 X 0.750, COT, ZINC/CLEAR
0220	-----	4	SCREW, 1/4-20 x 1/2" Hex Washer Self-Tap, BZ
0230	-----	4	LOCKWASHER, Spring, 5/16
0240	80003531	2	SCREW, 5/16-18X0.750, GR5, WHIZ-LOCK, ZC
0250	-----	2	WSHR .406 FLAT ZINC/CLEAR
0260	80004464	1	BOLT,5/16-18X0.530,SHLDR,GR 2,ZINC/CLEAR
0270	80005404	8	SCREW,5/16-18X0.625,WSHR,THD-ROLL,ZC/CL
0280	80005973	2	SCREW,#10-32X0.250,HEX WSHR,TT,ZC/CL
0290	80003534	1	NUT, Hex, 1/4-20
0300	80002712	1	SCREW, 1/4-20 x 3/4" Hex Head Cap, GR 5 YZ
0340	80005325	1	NUT,5/16-18, HEX NYLOCK,ZINC/CLEAR
0400	80003531	2	SCREW, 5/16-18X0.750, GR5, WHIZ-LOCK, ZC
0410	703350	2	WASHER, 5/16, Flat SAE, Zinc/Clear
0420	704318	4	SCREW, Hex Washer Self-Tap, 5/16-18 x 1-1/2
0430	703932	2	SCREW, 5/16-18 x 1/2" Torx Pan Head
0440	84003084	1	BRACKET, Fuel Tank
0450	84002669	1	BUMPER, Rear, Black, Textured

Mechanical Drive Group

Note: Unless noted otherwise, use the standard torque specifications

Mfg. No: 2691525-00



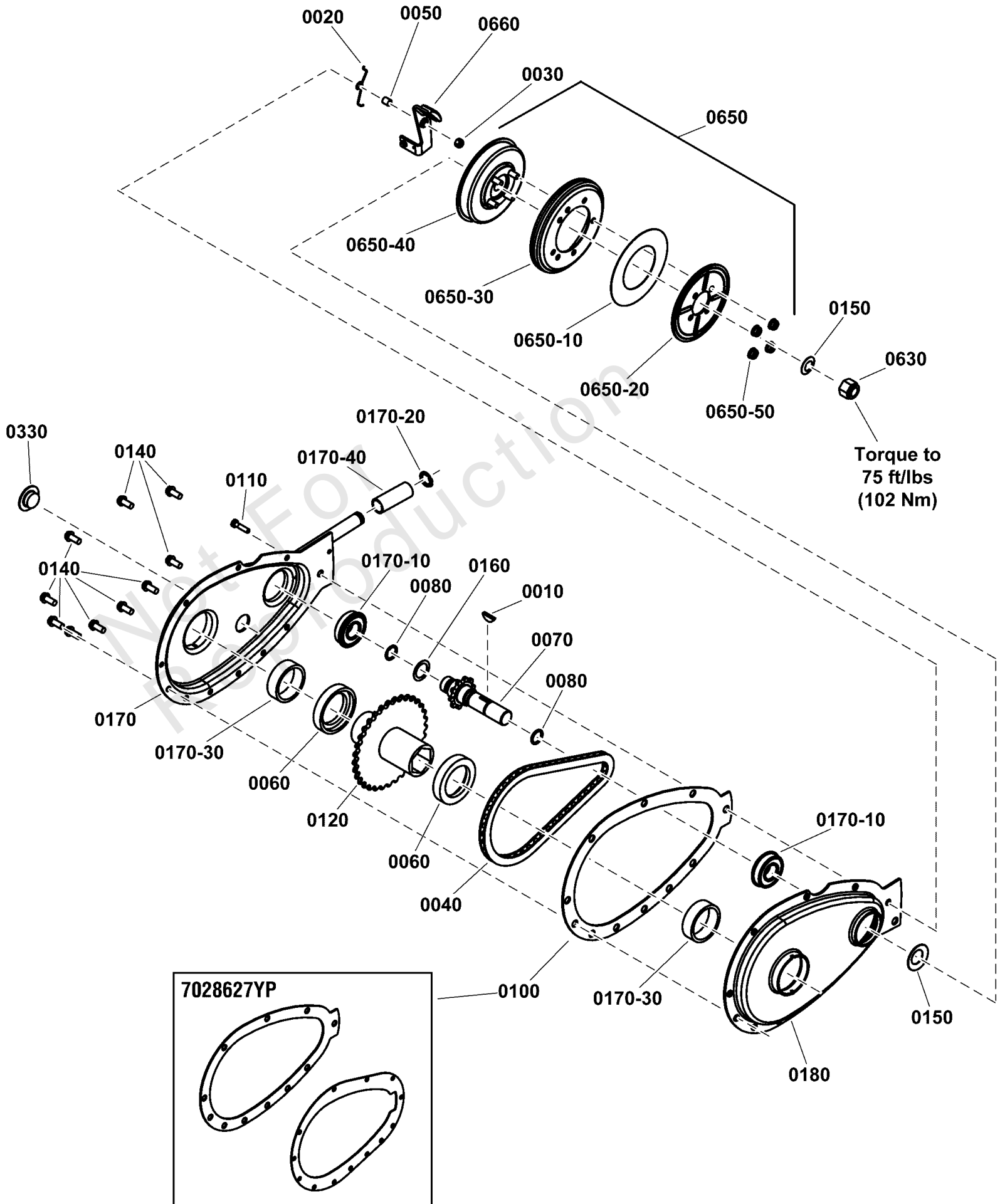
Mechanical Drive Group

REF NO	PART NO	QTY	DESCRIPTION
0020	7011013YP	1	BOLT, 5/16-24 x 2 Tapered, Axle (Right Hand)
0030	7011024YP	3	PLUG, 3/4 Hole
0040	7011035YP	1	BOLT, 5/16-24 x 1-5/8 Tapered, Axle (Left Hand)
0050	7011121SM	2	WASHER, 5/8" I.D., 1-1/4" O.D. Belleville
0060	7031732YP	1	CAP, Seal 1.0 ID x 1.67 OD
0070	7040433YP	1	HUB, Rear Wheel, 3 Hole 1.25 ID, RH
0080	7040434YP	1	HUB, Rear Wheel, 3 Hole 3/4 ID, LH
0090	7052497YP	1	ASSEMBLY, Brake Lever & Pad
0100	7072406YP	1	SPRING, Brake Return Torsion
0110	7072593YP	1	SPACER, Brake Arm Pivot (.265 ID, .375 OD, .418 long)
0120	7091504YP	1	SCREW, 1/4-28 X 1, Hex HD, GR5 BZ
0130	7011817YP	1	SEAL, 1.22 ID x 1.875 OD
0140	7012332YP	1	CLAMP, 2 ID
0140-10	7010614YP	1	KEY, #5 (1/8 x 5/8) Woodruff
0140-20	7010776YP	1	RETAINING RING, 1/2"
0140-40	7022785YP	1	ROLLER, 1-3/8 Long
0150-10	703123	6	NUT, 5/16-24, Serated Flange, Zinc/Clear, GR5
0150-40	7033799YP	1	BRACE, Cross
0150-50	7011070YP	1	TIE ROD, (5/16-24 thread- both ends)
0150-60	7011071YP	2	WASHER, Thrust, (.765 ID, 1.625 OD)(Nylon)
0150-70	7011072YP	1	WASHER, Thrust, (Hex Flanged)
0150-140	7052683YP	1	ASSEMBLY, Primary Chain Case
0150-170	7075115YP	2	BOOT, Rear Axle, Thick Flange
0150-180	704287	2	SCREW, 5/16-18 x 3/4 Hex Head Cap, GR 5, YZ
0150-250	7105184YP	4	CLAMP, 2 ID, Oetiker
0160	7600208YP	1	KIT, Smooth Clutch Assembly
0160-10	7014523YP	1	WASHER, Thrust
0160-20	7032331YP	1	PLATE, Smooth Clutch
0160-30	7600142YP	1	ASSEMBLY, Driven Hub & Cup
----	703935	4	BOLT, 5/16-24 x 1-1/8" Rib Neck, GR 5, ZC/BK (Not Shown)
0160-40	7600135YP	1	DRIVEN DISC, Rubber, Smooth Start Clutch
0170	703432	1	NUT, 5/8-18, Nylon Insert Lock, Zinc/Clear
0180	703972	1	NUT, 1/4-28 Hex Top Lock, GR 5, BZ
0190	704279	2	NUT, 5/16-24 Hex Flange Lock, BZ
0200	703949	2	SCREW, 5/16-18 X .625, Hex Washer Head, Thread Roll, Zinc/Clear
0220	703409	2	NUT, Serrated Lock Flange, 5/16-18
0300	7503036YP	1	ASSEMBLY, LH Fender, RER-RE
0300-20	7301302YP	1	FENDER, 1.625 ID Hole, LH, RER-RE
0300-30	7074182YP	2	BEARING, DX, 3/4" ID
0300-40	7052827YP	1	ASSEMBLY, Axle Bearing, 3/4" ID, PM
0300-50	7074500YP	1	SEAL, .750X1.25X.25, Dust / Grease
0300-60	7075848YP	1	FITTING, Lube, 45 Degree, 3/16 w/Hex (long shank)
0340	7600229YP	1	KIT, Differential Assembly
0350	7300546BMYP	1	GUARD, Front Main Case, Euro, RER-Black

Primary Chain Case

Note: Unless noted otherwise, use the standard torque specifications

Mfg. No: 2691525-00



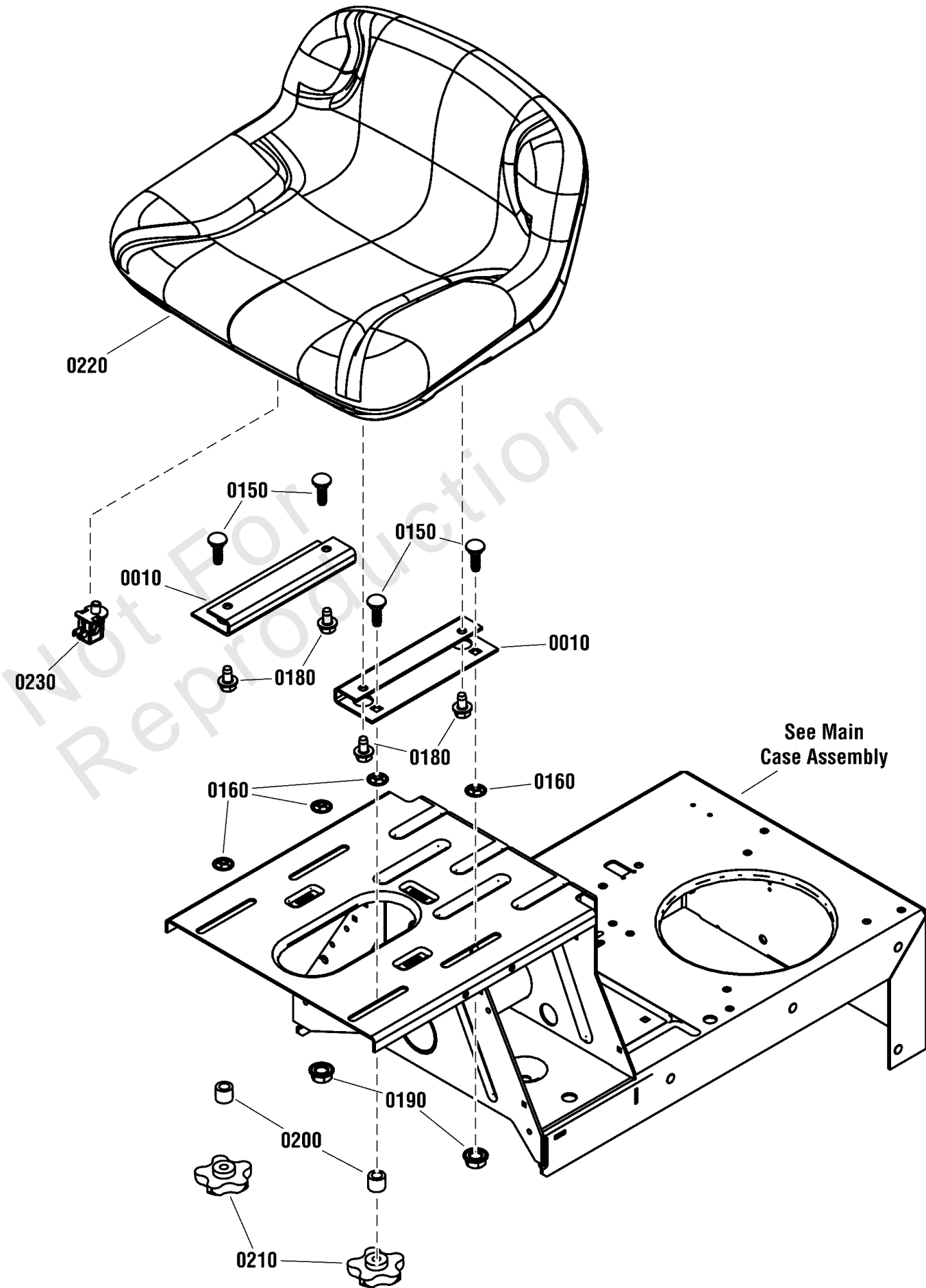
Primary Chain Case

REF NO	PART NO	QTY	DESCRIPTION
----	7052683YP	1	ASSEMBLY, Primary Chain Case -(Contains all except Rubber Disc and Brake related parts)
0010	7010614YP	1	KEY, #5 (1/8 x 5/8) Woodruff
0020	7072406YP	1	SPRING, Brake Return Torsion
0030	703972	1	NUT, 1/4-28 Hex Top Lock, GR 5, BZ -(Was 7090303)
0040	7010941YP	1	CHAIN, 46 Pitch (#35 Endless)
0050	7072593YP	1	SPACER, Brake Arm Pivot (.265 ID, .375 OD, .418 long)
0060	7011086YP	2	WASHER, Thrust, Nylon
0070	7018963YP	1	WELDMENT, Sprocket & Shaft
0080	7019260YP	2	O-RING, 1/2 x 5/8"
0100	7028761YP	1	GASKET, Primary Chain Case -(Replaced by gasket kit 7028762YP)
0110	7091504YP	1	SCREW, 1/4-28 X 1, Hex HD, GR5 BZ
0120	7040355YP	1	WELDMENT, Hub & Sprocket
0140	704060	10	SCREW, #10-24 x 1/2 Hex Washer Self-Tap (Torx), Zinc/Clear
0150	7011121SM	2	WASHER, Belleville .64 x 1.125 x .028
0160	7027981YP	1	WASHER, Wave .625 x .875
0170	7041136YP	1	WELDMENT, Primary Chain Case Half, RH
0170-10	7010756YP	2	BEARING, Ball 5/8 ID x 1-3/8 OD
0170-20	7010776YP	1	RING, 1/2 External Retaining
0170-30	7010942YP	2	BEARING, Needle 1.355 ID x 1.6245 OD x .5 Wide
0170-40	7022785YP	1	ROLLER, 1-3/8 Long
0180	7039778YP	1	COVER, Primary Chain Case, LH
0330	7011024YP	1	PLUG, 3/4"
0630	703432	1	NUT, 5/8-18, Nylon Insert Lock, Zinc/Clear
0650	7600136YP	1	KIT, Smooth Clutch Assembly
0650-10	7014523YP	1	WASHER, Thrust
0650-20	7032331YP	1	PLATE, Smooth Clutch
0650-30	7600135YP	1	DRIVEN DISC, Rubber, Smooth Start Clutch
0650-40	7600142YP	1	ASSEMBLY, Driven Hub & Cup -(Incl. Ref. 0650-60)
0650-50	703123	4	NUT, 5/16-24 Hex Flange Lock, BZ
0650-60	703935	4	SCREW, 5/16-24 x 1-1/8 Rib Neck, GR 5 (Not Shown)
0660	7052497YP	1	ASSEMBLY, Brake Lever & Pad

Seat Group

Note: Unless noted otherwise, use the standard torque specifications

Mfg. No: 2691525-00



Seat Group

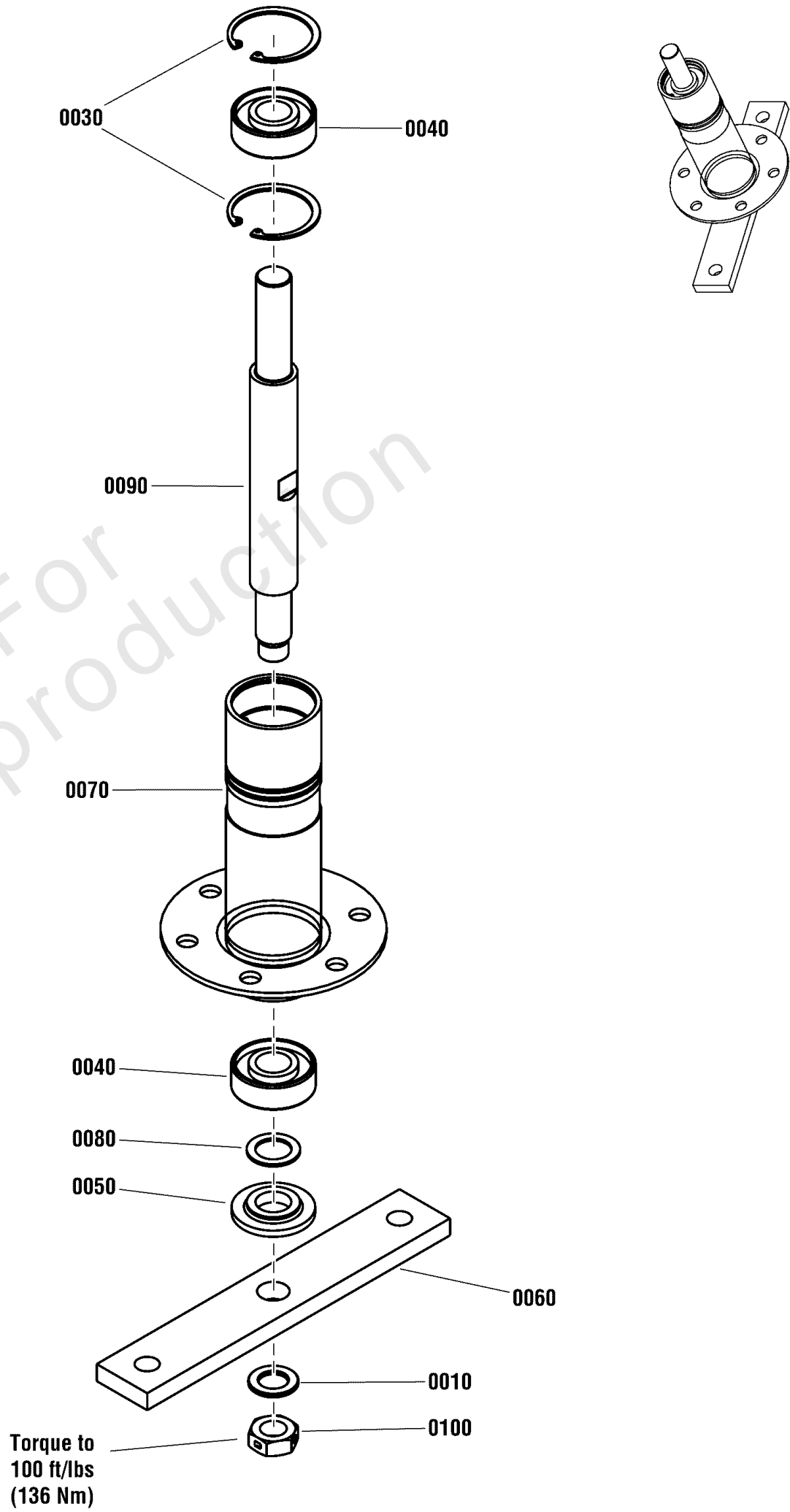
REF NO	PART NO	QTY	DESCRIPTION
0010	7075018BMYP	2	PLATE, Seat Adapter
0150	703800	4	BOLT, Carriage, 5/16-18 X 1
0160	703297	4	RETAINER, 5/16 X 5/8
0180	703354	4	SCREW, Flange, Whiz-Lock, 5/16-18 X 3/4
0190	704001	2	NUT, Hex Flange, 5/16-18
0200	703970	2	SPACER, .328 ID X .623 OD X .151 Thick
0210	7105085YP	2	KNOB, 5 Prong, 5/16-18
0220	84002668	1	SEAT, 12" Back, TS3400 w/Switch Hole
0230	7023354YP	1	SWITCH, Seat, Push Button (NC)

Not For Reproduction

Spindle Assembly

Note: Unless noted otherwise, use the standard torque specifications

Mfg. No: 2691525-00



Spindle Assembly

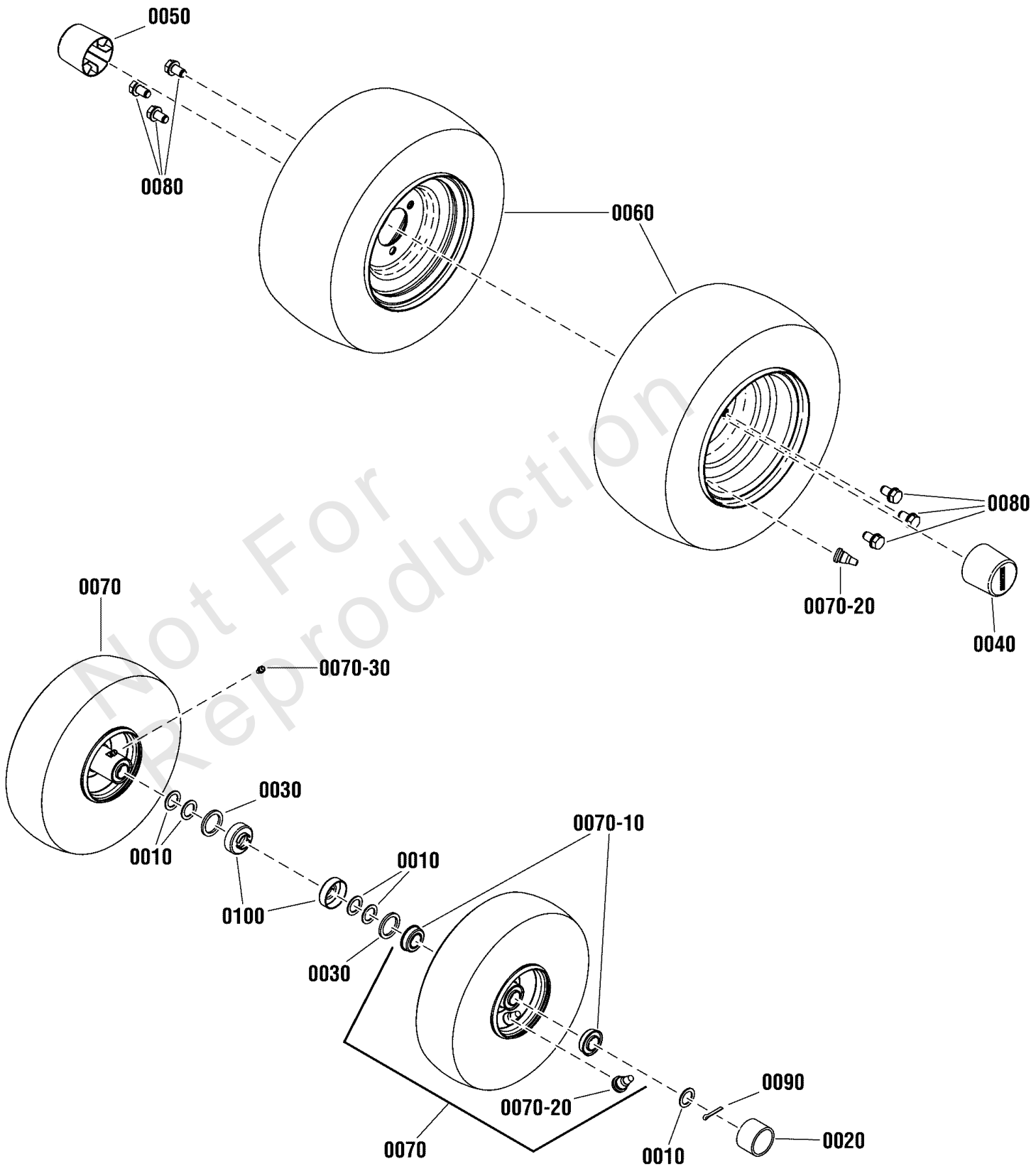
REF NO	PART NO	QTY	DESCRIPTION
0010	7010935SM	1	WASHER, .77 x 1.13 x .06, Flat
0030	7012491SM	2	RING, 1.85, Internal Retaining
0040	7013313SM	2	BEARING, Ball, 1.78 OD, .750 ID, .610 Wide
0050	7014407SM	1	WASHER, Spindle, .75 ID, 1.75 OD, .28 Thick, PM
0060	7031184YP	1	HOLDER, Blade (3 Hole)
0070	7040460BMYP	1	WELDMENT, Spindle Housing, 7.5" Tall
0080	7044782YP	1	SPACER, Blade Centering (.63 X 1.05 X .094)
0090	7044785YP	1	SPINDLE, Rider (10.327" overall length)
0100	7090356YP	1	NUT, 5/8-18 Hex Center Lock Jam, GR5, ZP
----	7600138YP	1	KIT, Spindle Assembly -(Includes all above)

Not For Reproduction

Wheel Group

Note: Unless noted otherwise, use the standard torque specifications

Mfg. No: 2691525-00



Wheel Group

REF NO	PART NO	QTY	DESCRIPTION
0010	7010935SM	6	WASHER, .77 x 1.13 x .06, Flat
0020	7011022YP	2	HUBCAP
0030	7011032YP	2	SEAL, Felt
0040	7023522YP	1	CAP, Hub, L.H., .975 ID x 2.25"
0050	7023895YP	1	CAP, Hub, R.H., 1.35 ID x 2.25"
0060	7106091YP	2	WHEEL ASSEMBLY, Rear, 16X6.50-8 2P K358 Kenda
0060-10	7012163YP	2	RIM, 8X5.375 3 Hole, Extra Wide (For 16/7.50 x 8 Tire) -(Not Shown)
0070	7106384YP	2	ASSEMBLY, Front Wheel, 11x4.00 - 4
0070-10	7011807YP	4	BEARING, Ball, Flanged (3/4 ID, 1-3/8 OD)
0070-20	7012234SM	4	AIR VALVE STEM, Snap-In
0070-30	7014669YP	2	LUBE FITTING, Straight (Press into 3/16 hole)
0070-40	7010821YP	2	TUBE, Inner (For 4.10/3.50 x 4 Tire - Not Standard) -(Not Shown)
0080	703431	6	BOLT, 1/2-20 X .750, Hex Washer Dog Point, ZC/CL
0090	703984	2	PIN, 5/32 x 1, Cotter, ZC/CL
0100	7031038YP	2	CAP, Dust

Not For Reproduction

Hardware Identification & Torque Specifications

Torque Specification Chart								
FOR STANDARD METRIC MACHINE HARDWARE (Tolerance ± 20%)								
Property Class	5.6		8.8		10.9		12.9	
	Class 5.6		Class 8.8		Class 10.9		Class 12.9	
Size Of Hardware	in/lbs	Nm.	in/lbs	Nm.	in/lbs	Nm.	in/lbs	Nm.
	ft/lbs		ft/lbs		ft/lbs		ft/lbs	
M3	5.88	.56	13.44	1.28	19.2	1.80	22.92	2.15
M4	13.44	1.28	30.72	2.90	43.44	4.10	52.56	4.95
M5	26.4	2.50	60.96	5.75	5.97	8.10	7.15	9.7
M6	44.64	4.3	7.3	9.9	10.3	14	12.1	16.5
M7	5.2	7.1	12.1	16.5	16.9	23	19.9	27
M8	7.7	10.5	17.7	24	25	34	29	40
M10	15	21	35	48	50	67	59	81
M12	26	36	61	83	86.2	117	103	140
M14	42	58	101	132	136	185	162	220
M16	64	88	147	200	210	285	250	340
M18	89	121	202	275	287	390	346	470
M20	126	171	290	390	405	550	486	660
M22	169	230	390	530	559	745	656	890
M24	217	295	497	375	708	960	840	1140
M27	320	435	733	995	1032	1400	1239	1680
M30	435	590	995	1350	1401	1900	1681	2280
M33	590	800	1349	1830	1902	2580	2278	3090
M36	759	1030	1740	2360	2441	3310	2935	3980
M39	988	1340	2249	3050	3163	4290	3798	5150

Torque Specification Chart						
FOR STANDARD MACHINE HARDWARE (Tolerance ± 20%)						
Hardware Grade	No Marks		SAE Grade 5		SAE Grade 8	
	SAE Grade 2		SAE Grade 5		SAE Grade 8	
Size Of Hardware	in/lbs	Nm.	in/lbs	Nm.	in/lbs	Nm.
	ft/lbs		ft/lbs		ft/lbs	
8-32	19	2.1	30	3.4	41	4.6
8-36	20	2.3	31	3.5	43	4.9
10-24	27	3.1	43	4.9	60	6.8
10-32	31	3.5	49	5.5	68	7.7
1/4-20	66	7.6	8	10.9	12	16.3
1/4-28	76	8.6	10	13.6	14	19.0
5/16-18	11	15.0	17	23.1	25	34.0
5/16-24	12	16.3	19	25.8	29	34.0
3/8-16	20	27.2	30	40.8	45	61.2
3/8-24	23	31.3	35	47.6	50	68.0
7/16-14	30	40.8	50	68.0	70	95.2
7/16-20	35	47.6	55	74.8	80	108.8
1/2-13	50	68.0	75	102.0	110	149.6
1/2-20	55	74.8	90	122.4	120	163.2
9/16-12	65	88.4	110	149.6	150	204.0
9/16-18	75	102.0	120	163.2	170	231.2
5/8-11	90	122.4	150	204.0	220	299.2
5/8-18	100	136	180	244.8	240	326.4
3/4-10	160	217.6	260	353.6	386	525.0
3/4-16	180	244.8	300	408.0	420	571.2
7/8-9	140	190.4	400	544.0	600	816.0
7/8-14	155	210.8	440	598.4	660	897.6
1-8	220	299.2	580	788.8	900	1,244.0
1-12	240	326.4	640	870.4	1,000	1,360.0

The guides and ruler furnished below are designed to help you select the appropriate hardware.

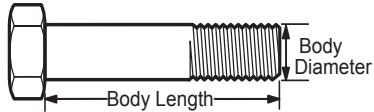


Nut, M8

Thread Diameter (mm)

Inside Diameter (in) Threads per inch

Nut, 1/2-16

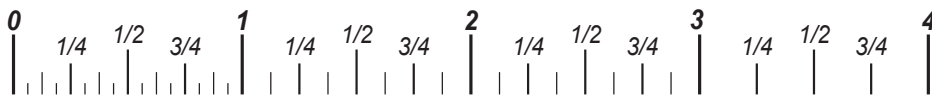


Screw, M8- 1.25 x 25

Thread Diameter (mm) Distance between threads (mm) Body Length (mm)

Body Diameter Threads per inch Body Length (in)

Screw, 1/2- 16 x 2



Standard Hardware Sizing

When a washer or nut is identified as 1/2" (M8), this is the *Nominal size*, meaning the *inside diameter* is 1/2 inch (8mm metric thread diameter); if a second number is present it represents the *threads per inch* (distance between threads).

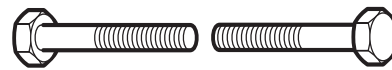
When bolt or capscrew is identified as 1/2 - 16 x 2" (M8 - 1.25 x 50), this means the *Nominal size*, or body diameter is 1/2 inch (8mm metric thread diameter), the second number, 16, represents the *threads per inch*, (*distance between threads*). The final number is the body length of the bolt or screw, 2 inches (50mm).

NOTES

- These torque values are to be used for all hardware excluding: locknuts, self-tapping screws, thread forming screws, sheet metal screws and socket head setscrews.
- Recommended seating torque values for locknuts:
 - for prevailing torque locknuts - use 65% of grade 5 torques.
 - for flange whizlock nuts and screws - use 135% of grade 5 torques.
- Unless otherwise noted on assembly drawings, all torque values must meet this specification.

Common Hardware Types

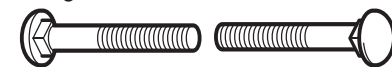
Hex Head Capscrew



Washer



Carriage Bolt



Hex Nut

Wrench & Fastener Size Guide

1/4" Bolt or Nut Wrench—7/16"	5/16" Bolt or Nut Wrench—1/2"	3/8" Bolt or Nut Wrench—9/16"	7/16" Bolt or Nut Wrench (Bolt)—5/8" Wrench (Nut)—11/16"	1/2" Bolt or Nut Wrench—3/4"
M6 Bolt or Nut Wrench—10mm	M8 Bolt or Nut Wrench—13mm	M10 Bolt or Nut Wrench—17mm	M12 Bolt or Nut Wrench—19mm	M14 Bolt or Nut Wrench—22mm

