

SET-UP INSTRUCTIONS for 21" WALK BEHIND MOWERS

Unpack the Mower

Carefully unpack the carton and identify the components.

NOTE: Not all components come with all models. Some components may differ according to model. Consult your Operator's Manual for contact information if you have questions or concerns.

Carton Contents - 7800946-02, 7800979-00, 7800979A-00

- Mower (A)
- Manual Packet/Hardware Kit (C)
- Control Console (D)
- Grass Bag (G)
- Grass Bag Adapter (I)

Carton Contents - 7800947-02, 7800980-00, 7800980A-00

- Mower (A)
- Ground Speed Rod (B)
- Manual Packet/Hardware Kit (C)
- Control Console (D)
- Grass Bag (G)
- Grass Bag Adapter (I)

Carton Contents - 7800981-00, 7800981A-00

- Mower (A)
- Ground Speed Rod (B)
- Manual Packet/Hardware Kit (C)
- Control Console (D)
- Mulching Cover (E)
- Discharge Deflector (F)

Carton Contents - 7800982-00, 7800982A-00

- Mower (A)
- Ground Speed Rod (B)
- Manual Packet/Hardware Kit (C)
- Control Console (D)
- Discharge Deflector (F)
- Grass Bag (G)
- Mulching Plug (H)
- Grass Bag Adapter (I)
- Battery Kit (J)
- Battery Harness (Not Shown)

Hardware Bag Contents - All Models

- K. Handle Knob, 5-Prong (2)
- L. Internal Tooth Washer, 5/16 (2)
- M. Conical Head Bolt, 5/16-18 x 2 (2)
- N. Cable Tie (5)
- O. Self-Tapping Torx Screw, 1/4-20 x 1/2 (4)
- P. Fluted Knob, 5/16-18 (2)
- Q. Internal/External Tooth Washer, 5/16 (2)
- R. Throttle Knob (1)

Additional Hardware Bag Contents - 7800947-02, 7800980-00, 7800980A-00, 7800981-00, 7800981A-00, 7800982-00, 7800982A-00

- S. Shift Knob (1)
- T. Hex Nut, #8-32 (1)
- U. Machine Head Screw, #8-32 x 1/2 (1)
- V. Flat Washer, 5/16 (1)
- W. Cotter Pin, Self-Locking (1)
- X. Hex Nut, 1/4-28 (1)

Additional Hardware Bag Contents - 7800982-00, 7800982A-00

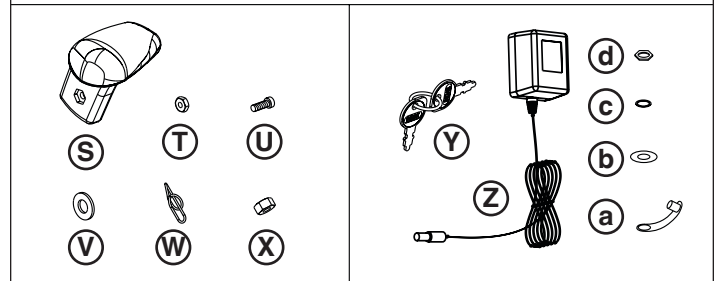
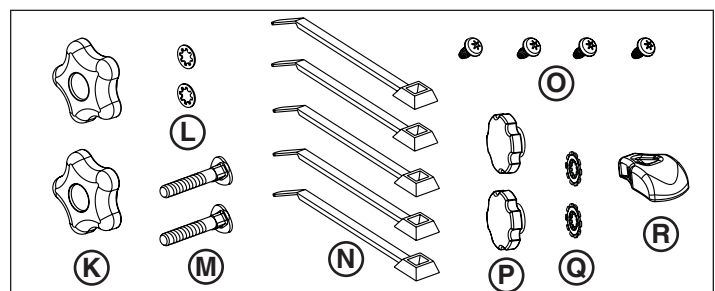
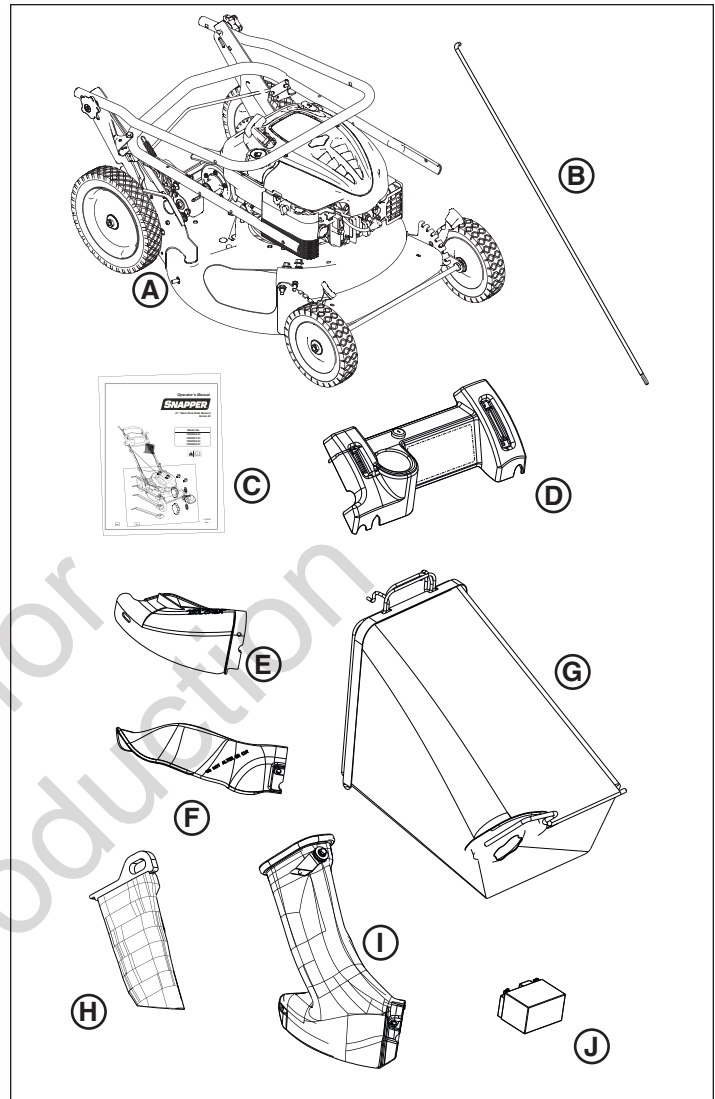
- Y. Set of Ignition Keys (1)
- Z. Battery Charger (1)
- a. Charger Jack Dust Cap (1)
- b. Large Flat Washer (1)
- c. Split Lock Washer (1)
- d. Hex Jam Nut (1)



WARNING



Do not attempt to start or operate this unit until all assembly steps have been completed. Serious injury or equipment damage may result.



Set Up the Handle (All Models)

NOTE: Before setting up the handle, remove the hang tag securing the handle assembly in the shipping position.

IMPORTANT: A removable hang tag has been installed onto the handle assembly prior to shipping. This tag instructs the user to install the discharge components before starting the unit. **Be sure to follow these important instructions.**

1. Lift lower handle as shown.
2. Tighten the handle knobs securely.

NOTE: Right side shown; left side same.

3. Lift upper handle ends, lining up attaching holes with lower handle holes.
4. Attach using the two 5/16-18 x 2" conical head bolts (M), two 5/16" internal tooth lock washers (L), and two handle knobs (K).
5. Lift upper handle as shown.
6. Tighten the handle knobs securely.

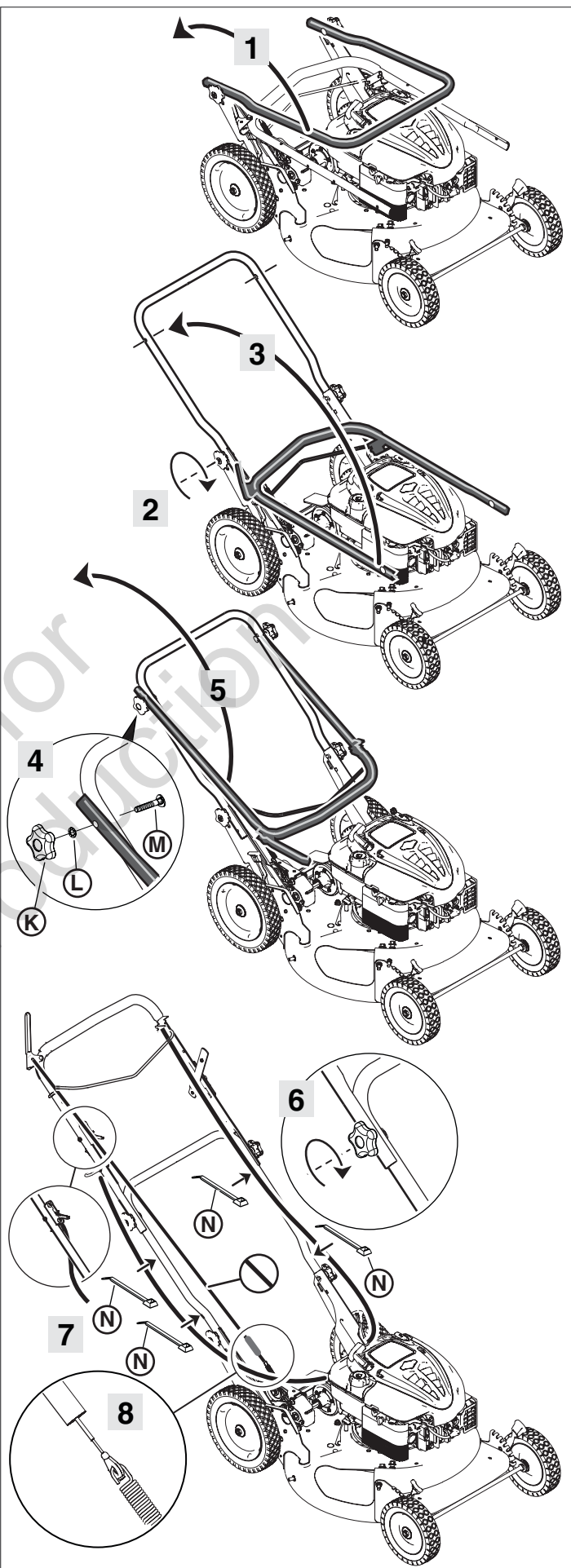
IMPORTANT: Do not entangle or pinch the control cables.

7. Using four of the cable ties (N), fasten the control cables and battery harness (models 7800982-00 & 7800982A-00 - see note) to the handle in the locations shown.

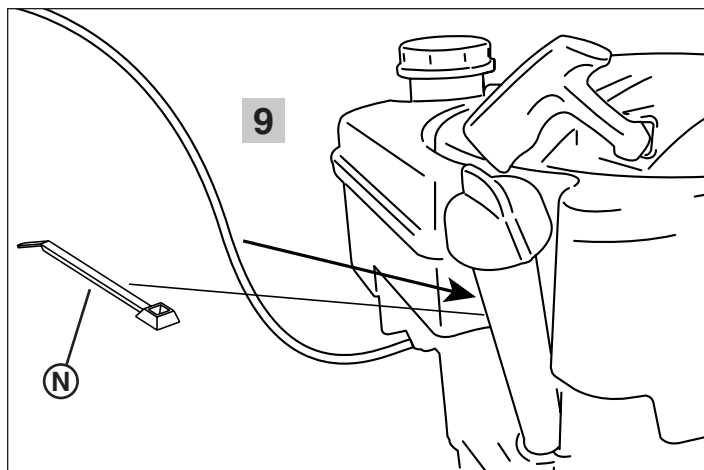
NOTE: Do not fasten the drive cable (if equipped) to the handle.

NOTE: On models 7800982-00 & 7800982A-00, do not install the cable ties until the battery harness is installed and connected. See 'Install the Battery'.

8. On self-propelled models, check to see that the drive cable is connected to the drive spring. See inset.

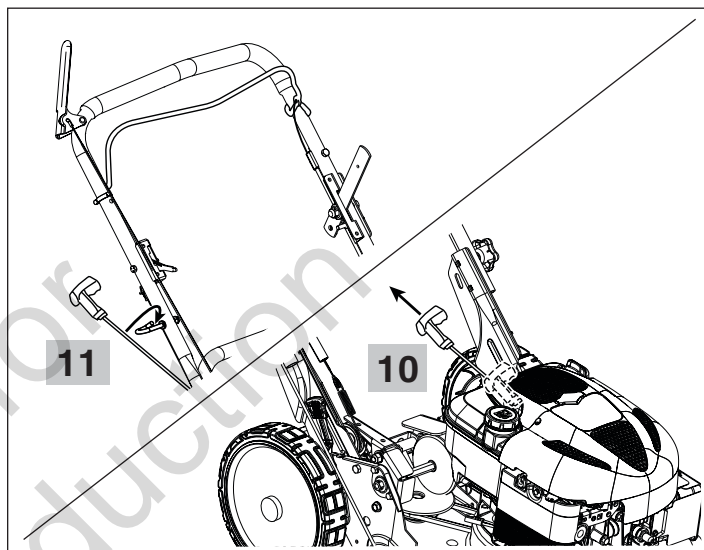


9. Using the fifth cable tie (N), secure the engine speed control cable to the oil fill tube on the right rear of the engine.



10. **Slowly** pull the recoil handle out from the engine.

11. Hook the recoil rope into the rope guide.



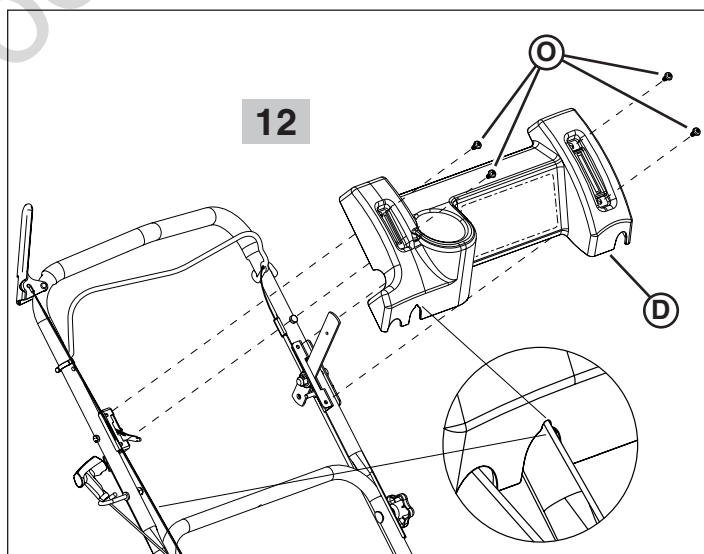
WARNING



Keep hands and feet away from mower discharge. Failure to do so may result in personal injury or death.

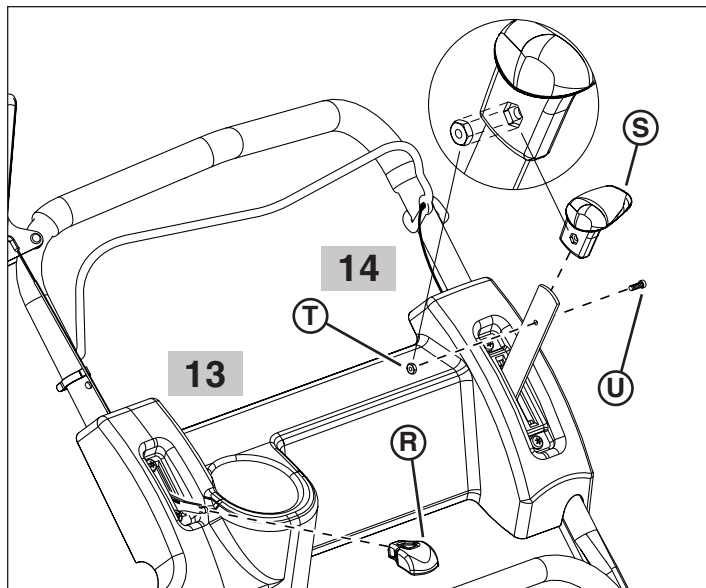
12. Install the control console (D) to the handle as shown with the four self-tapping torx screws (O), using a T-30 torx bit. Tighten securely.

NOTE: Route the drive cable (if equipped) through the relief slot in the console. See inset.



13. Firmly install the throttle knob (R) to the throttle lever (if equipped).
14. Install the shift knob (S) onto the shift lever (if equipped) with the #8-32 hex nut (T) and #8-32 x 1/2 machine head screw (U). Tighten securely.

NOTE: Insert the hex nut into the relief hole in the shift knob. See inset.



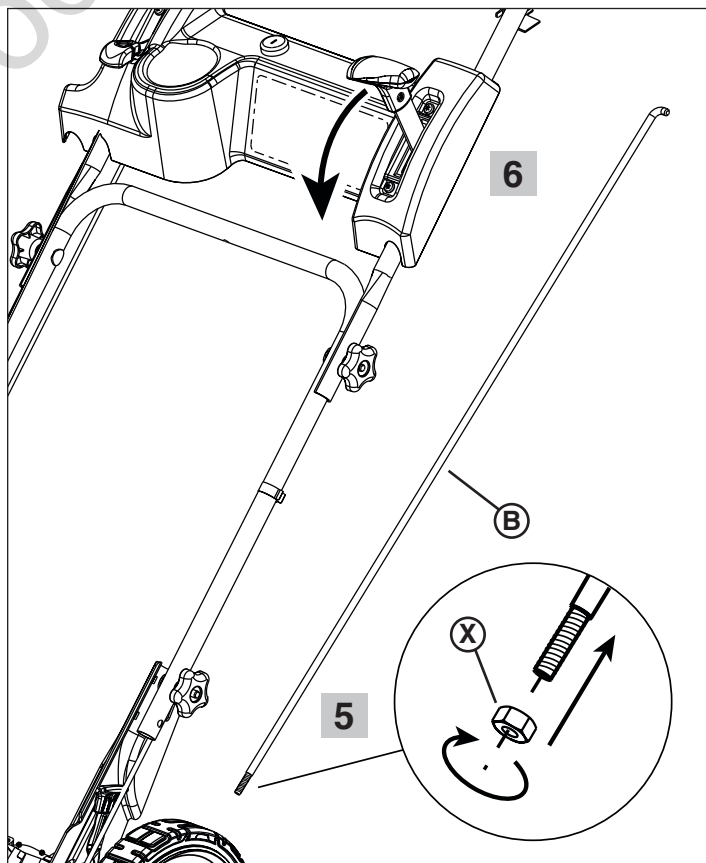
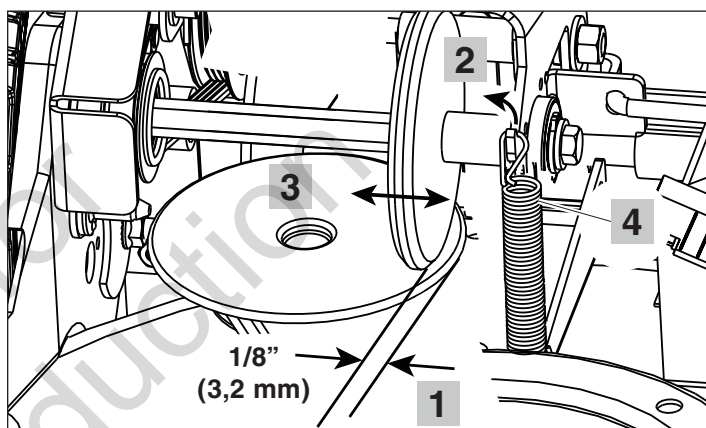
Install the Ground Speed Rod (7800947-02, 7800980-00, 7800980A-00, 7800981-00, 7800981A-00, 7800982-00, 7800982A-00)

1. Measure the distance from the driven (vertical) disc to the edge of the horizontal (drive) disc. It should be approximately 1/8" (3,2mm).

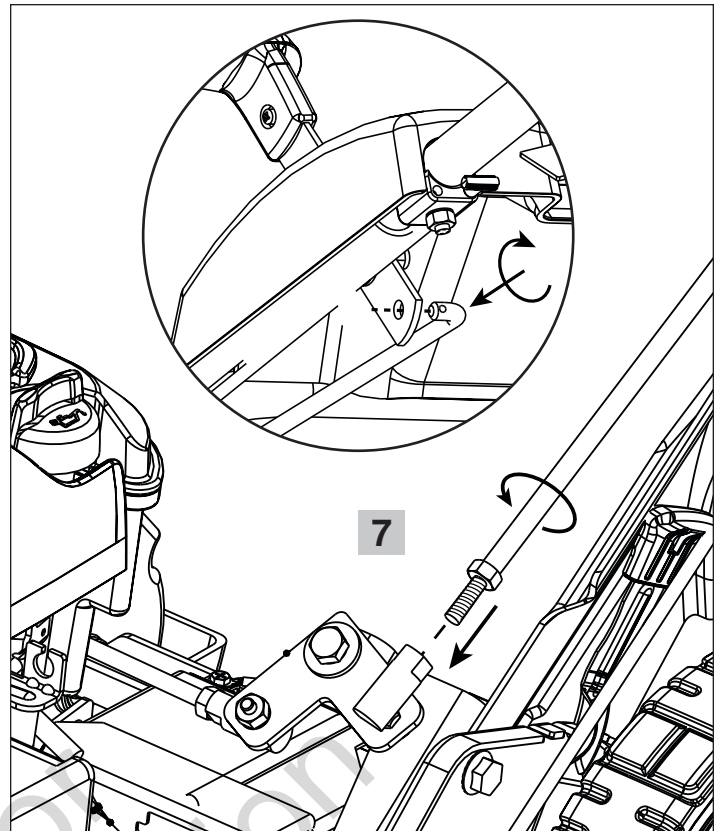
NOTE: The discs are located by the right rear wheel, behind the engine.

If adjustment is needed:

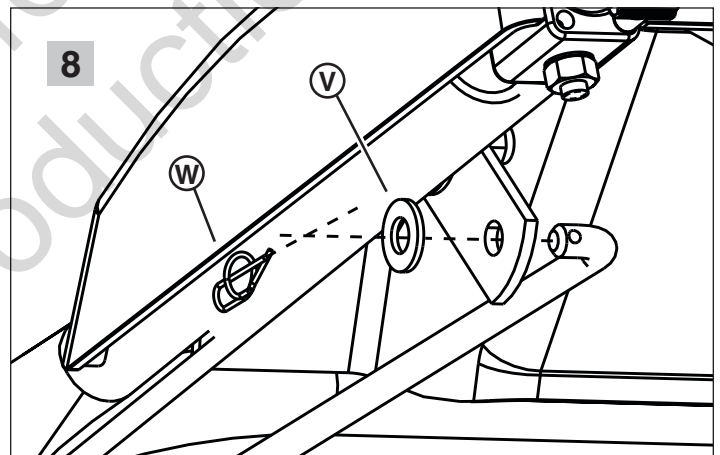
2. Remove the top of the drive system spring. (Use a pair of needle nose pliers.)
3. Slide the driven (vertical) disc to get the desired measurement.
4. Reattach the drive system spring.
5. Install the 1/4-28 hex nut (X) all the way up the threads on the end of the ground speed rod (B).
6. Slide the ground speed lever all the way forward.



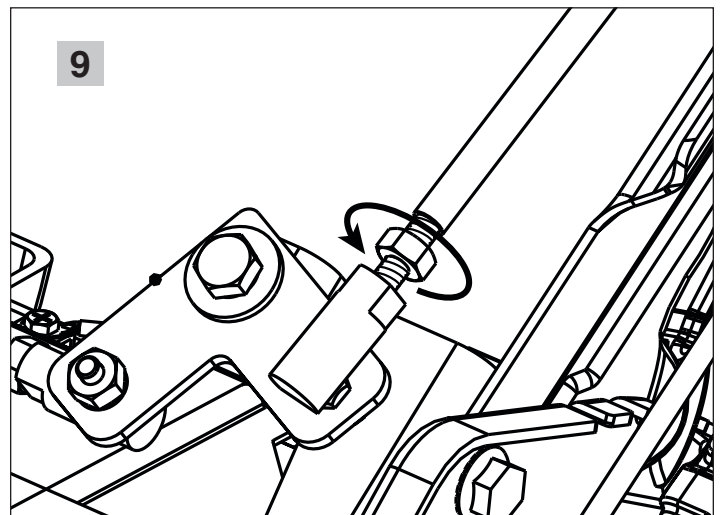
7. Thread the ground speed rod into the ball joint on the speed control pivot arm until the elbow on top of the ground speed rod is lined up with the hole in the bottom of the ground speed lever (inset).



8. Insert the ground speed rod into the ground speed lever. Secure with the 5/16" flat washer (V) and self-locking cotter pin (W).



9. Tighten the hex nut against the ball joint.



Install the Discharge Components (varies according to model)



WARNING



Install the discharge component(s) before attempting to start the unit. Failure to do so may result in personal injury or death.



WARNING

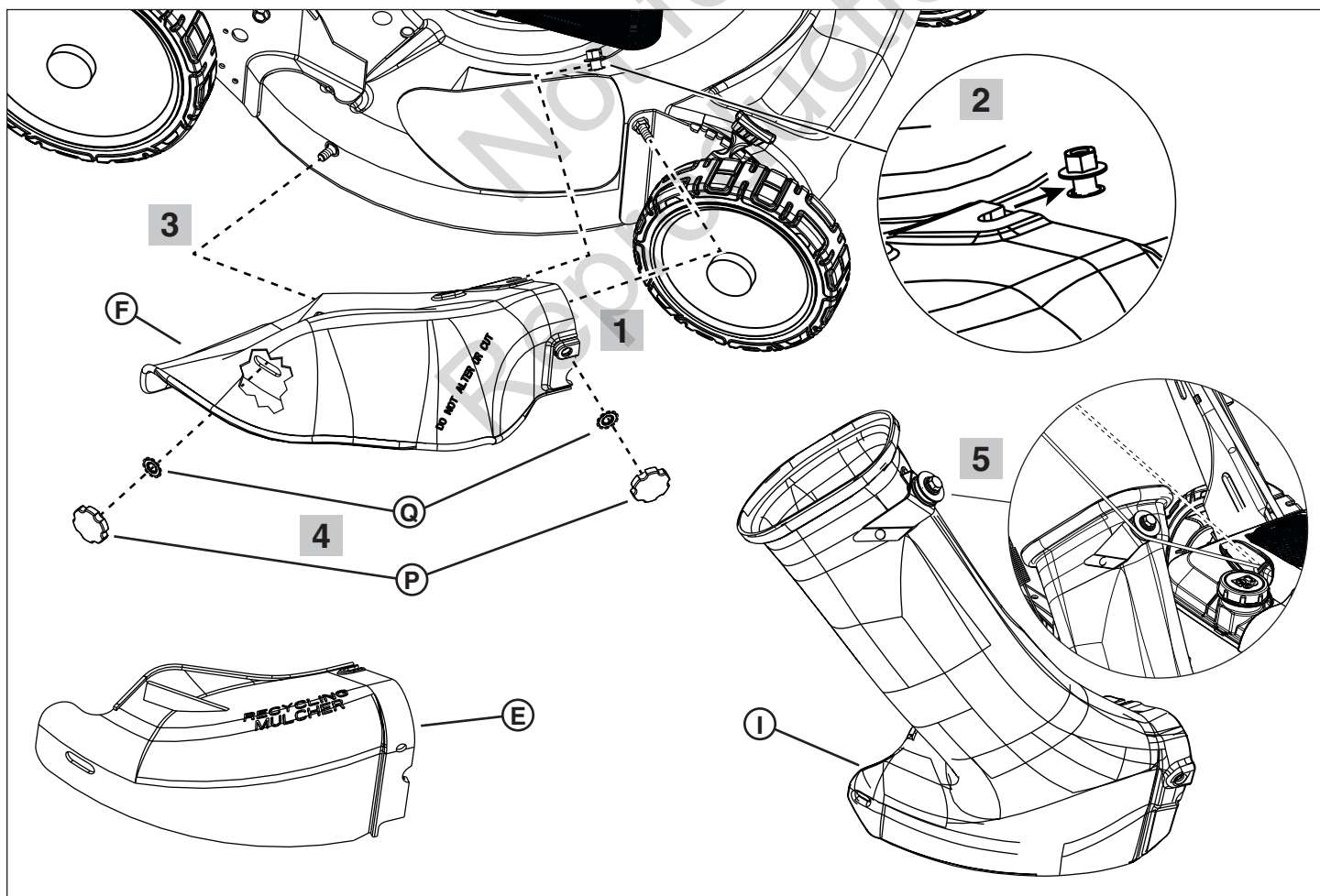


DO NOT operate without entire Grass Catcher or guard in place. Grass Catcher components are subject to deterioration during normal use. Inspect frequently and replace worn or damaged components immediately. Replace with only factory authorized replacement components or like components.

Install the Discharge Deflector/Mulching Cover/ Grass Bag Adapter

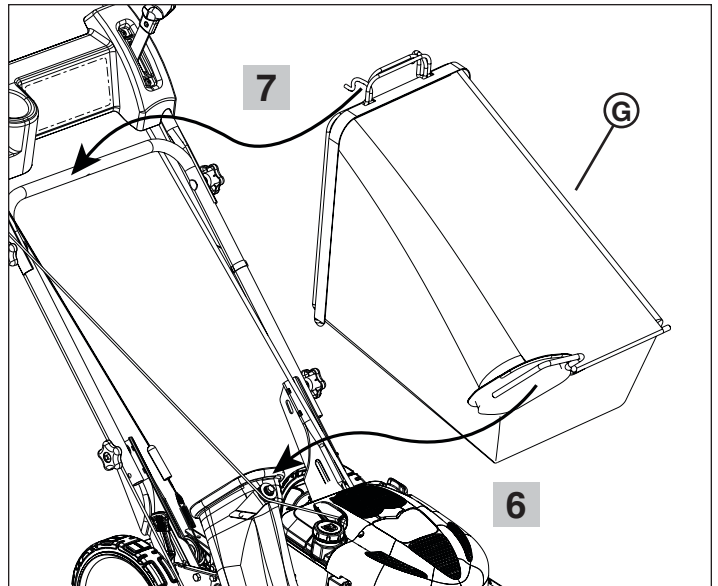
The discharge deflector (F), mulching cover (E), and grass bag adapter (I) all attach to the mower deck in the same way:

1. Install the front mounting hole onto the front mounting stud on the side of the mower deck.
2. Install the top mounting slot under the restraining nut on the top of the mower deck.
3. Install the rear mounting hole onto the rear mounting stud on the side of the mower deck.
4. Install the two internal/external tooth washers (Q) and the two fluted knobs (P) onto the two mounting studs. Tighten securely.
5. When installing the grass bag adapter, route the recoil rope around the recoil rope pulley on top of the adapter.



Install the Grass Bag

- Slide the front of the grass bag (G) over the top of the grass bag adapter.
- Hook the rear of the grass bag over the handle.



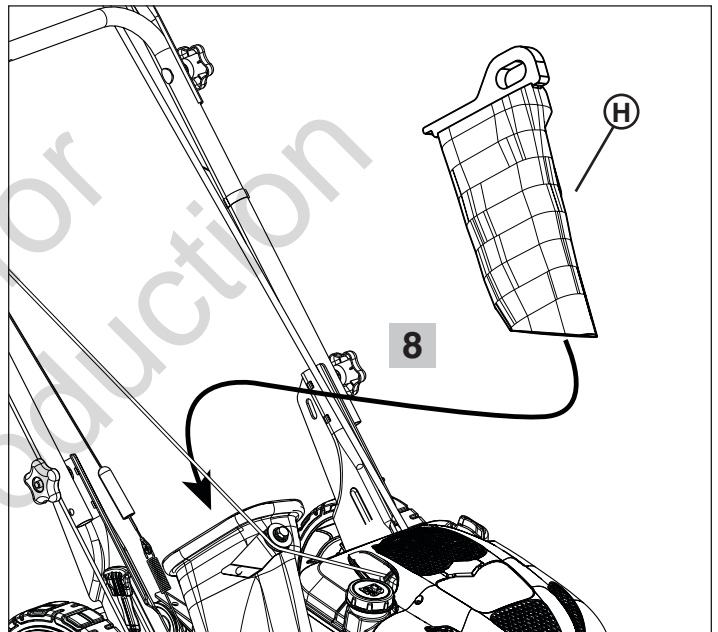
- On models equipped with a mulching plug (H), install the mulching plug into the grass bag adapter. Also install the grass bag as a safeguard and to further secure the mulching plug.



WARNING



Install the grass bag when using the mulching plug. Failure to do so may result in personal injury or death.

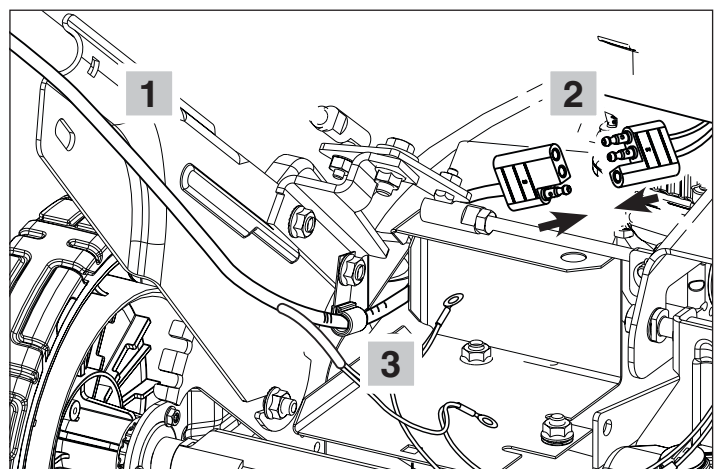


Install the Battery (7800982-00, 7800982A-00)

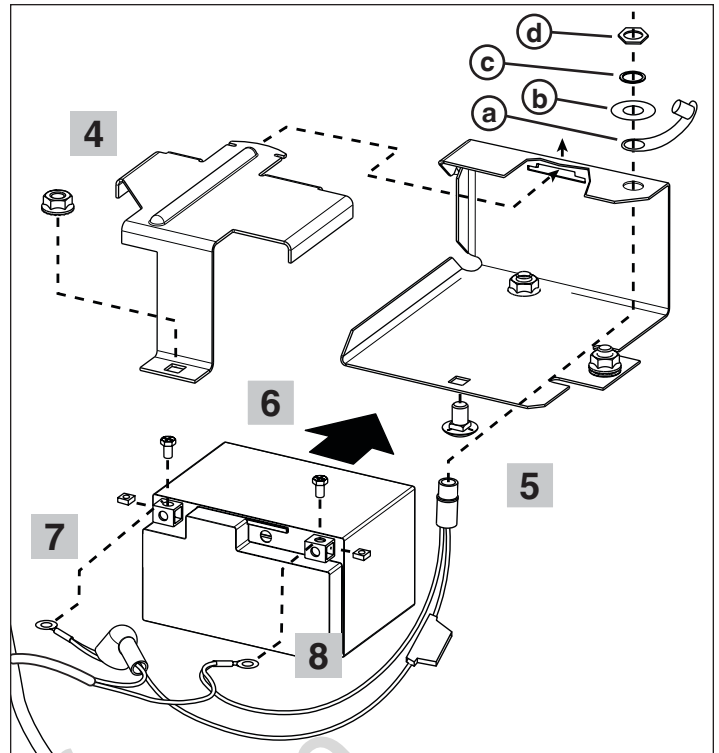
- Route the battery harness down the left side of the handle. Secure the harness to the handle with two of the cable ties. (See Step 5 of 'Set Up the Handle'.)
- Connect the lower end of the battery harness to the engine harness.

NOTE: The engine harness may be tucked up into the shroud on the back side of the engine.

- Slip the battery harness into the clip on the handle bracket.



4. Remove the hardware securing the battery cover, then remove the cover.
 5. Install the charger jack into the battery mounting bracket, securing with:
 - a) dust cap
 - b) large flat washer
 - c) split lock washer
 - d) hex jam nut
 6. Install the battery into the battery mounting bracket as shown.
- NOTE: Background components removed for clarity.*
7. Install the red positive (+) cable to the battery as shown. Slide the terminal cover over the positive terminal.

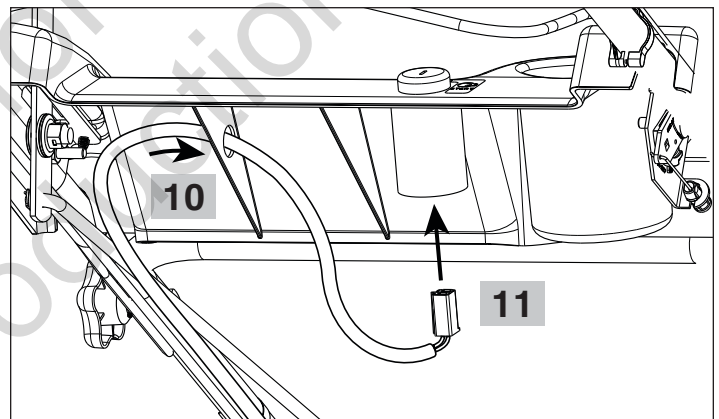


WARNING

Shield the positive terminal with terminal cover located on battery harness. This prevents metal from touching the positive terminal, which could cause sparks.

8. Install the black negative (-) cable to the battery as shown.
9. Replace the battery cover and hardware, tightening securely.

10. Route the top of the battery harness through the hole in the console.
11. Plug the harness into the ignition switch.
12. Activate the battery (J) according to the instructions provided with the battery kit.
13. Charge the battery with the battery charger (Z) by plugging the battery charger first into the charger jack, then into a 110-volt outlet. Charge for 16-24 hours. (Longer periods will not damage the battery.)



WARNING

Avoid serious injury and property damage. DO NOT attempt to charge this battery with automotive or 'Boost' chargers. DO NOT attempt to jump start a mower that has a dead battery. Always use the charger supplied with the mower to charge this battery.

Check Safety Interlock System

Refer to "Check Safety Interlock System" in the Operator's Manual.

WARNING

DO NOT operate machine if any safety interlock or safety device is not in place and functioning properly. Contact your dealer for assistance. DO NOT attempt to defeat, modify or remove any safety device.

Set-up is complete. Please refer to your Operator's Manual for starting, operating, and maintenance information.

IMPORTANT: The engine does not contain oil. Refer to the Operator's Manual for instructions and recommendations concerning engine oil.

INSTRUCCIONES DE INSTALACIÓN para CORTACÉSPEDOS IMPULSADOS DE 21"

Desembalaje del cortacésped

Con cuidado, retire la caja de cartón e identifique los componentes.

NOTA: No todos los componentes vienen con todos los modelos. Algunos componentes pueden diferir según el modelo. Consulte el manual del operador para obtener información de contacto si tiene preguntas o inquietudes.

Contenido de la caja - 7800946-02, 7800979-00, 7800979A-00

- Cortacésped (A)
- Kit de paquete de manual y piezas (C)
- Consola de control (D)
- Bolsa para césped (G)
- Adaptador de la bolsa para césped (I)

Contenido de la caja - 7800947-02, 7800980-00, 7800980A-00

- Cortacésped (A)
- Varilla de velocidad de desplazamiento (B)
- Kit de paquete de manual y piezas (C)
- Consola de control (D)
- Bolsa para césped (G)
- Adaptador de la bolsa para césped (I)

Contenido de la caja - 7800981-00, 7800981A-00

- Cortacésped (A)
- Varilla de velocidad de desplazamiento (B)
- Kit de paquete de manual y piezas (C)
- Consola de control (D)
- Cubierta de mantillo (E)
- Deflector de descarga (F)

Contenido de la caja - 7800982-00, 7800982A-00

- Cortacésped (A)
- Varilla de velocidad de desplazamiento (B)
- Kit de paquete de manual y piezas (C)
- Consola de control (D)
- Deflector de descarga (F)
- Bolsa para césped (G)
- Tapón de mantillo (H)
- Adaptador de la bolsa para césped (I)
- Kit de batería (J)
- Haz de cables de la batería (no se muestra)

Contenido de la bolsa de piezas - Todos los modelos

- K. Perilla del manillar, 5 puntas (2)
- L. Arandela con dientes internos, 5/16" (2)
- M. Perno de cabeza cónica, 5/16-18 x 2 (2)
- N. Amarra para cables (5)
- O. Tornillo Torx autorroscante, 1/4-20 x 1/2 (4)
- P. Perilla acanalada, 5/16-18 (2)
- Q. Arandela con dientes internos y externos, 5/16" (2)
- R. Perilla del acelerador (1)

Contenido adicional de la bolsa de piezas

7800947-02, 7800980-00, 7800980A-00, 7800981-00, 7800981A-00, 7800982-00, 7800982A-00

- S. Perilla de cambio (1)
- T. Tuerca hexagonal, n.º 8-32 (1)
- U. Tornillo de cabeza fresada, n.º 8-32 x 1/2 (1)
- V. Arandela plana, 5/16" (1)
- W. Pasador de chaveta, bloqueo automático (1)
- X. Tuerca hexagonal, 1/4-28 (1)

Contenido adicional de la bolsa de piezas - 7800982-00, 7800982A-00

- Y. Juego de llaves de contacto (1)
- Z. Cargador de batería (1)
- a. Tapa para el polvo de la toma de cargador (1)
- b. Arandela plana grande (1)
- c. Arandela de sujeción dividida (1)
- d. Contratuercas hexagonales (1)



ADVERTENCIA

No intente arrancar la unidad hasta que se hayan completado todos los pasos de montaje. Se pueden producir lesiones graves o daños en el equipo.



