



SRP4010E 230V PD 50/60Hz - CONTROL I

814.0389-0

ATTENTION: This drawing is a SCHULZ COMPRESSORES Ltda property. All rights reserved. Is not allowed to copy its content without authorization. If you have any doubt, please contact Products Department of Schulz Compressors.

---	---	---	---	---	---	---	---
---	---	---	---	---	---	---	---
---	---	---	---	---	---	---	---
IDERALDO.CO	000673	01	ANDERSON.SE	06	---	09/07/2020	Terminals, Cord 1: Fan (Cooler)
CARLOS.BR	---	---	ANDERSON.SE	---	---	27/01/2020	DRAWING RELEASE
APPROVED	S.A.P.	Nº	DRAWN	PG	CO	DATE	CHANGEMENT
REVIEW							

SRP4010E 230V PD 50/60Hz - CONTROL I



	NAME	DATE	Title Page		Scale: 1: 1
DRAWN	ANDERSON.SE	18/02/2019			
CHECKED	IDERALDO.CO	27/01/2020	CODE: 814.0389-0		PAGE
APPROVED	CARLOS.BR	28/01/2020			1 / 5

ATTENTION: This drawing is a SCHULZ COMPRESSORES Ltda property. All rights reserved. Is not allowed to copy its content without authorization. If you have any doubt, please contact Products Department of Schulz Compressors.

Component	Description
K1	Contactora Line
K2	Contactora Delta
K3	Contactora Star
K4	Contactora Fan
K5	Contactora Dryer
K6	Contactora Fan Enclosure Electric
KA1	Contactora Auxiliary 1
KA2	Contactora Auxiliary 2
KA3	Contactora Auxiliary 3
KA4	Contactora Auxiliary 4
M1	Main motor
M2	Dryer fan (cooler)
M3	Hermetic compressor motor
M4	Fan dryer
M5	Electric panel fan
M6	Electric panel fan
FT1	Overload relay / main motor
FT2	Overload relay / fan cooler
QN	1-pole circuit breaker
QN	2 poles circuit breaker
FN	Command fuse

Component	Description
1X0	Power terminal
1X1	Control terminal / 24 VCA
1X2	Control terminal / 220 VCA
XSN	Bar terminal
TN	Transformer Control
B1	Emergency stop
Y1	Intake solenoid valve
Y2	Solenoid valve for modulating control
Y3	Solenoid valve, slow relief / pneumatic retention
PURG	Electronic condensate drain
KSFF	Phase fault and sequence relay
KTN	Timer relay
H	Hour meter
HN	Signal lamp
TR1	Thermometer / thermostat
P1	Load / Unload pressures switch
P2	Unload pressure switch
P3	Safety pressure switch
P4	Low pressure switch
TP1	Delivery pressure transducer
TP2	Internal pressure transducer

Component	Description
TMP1	Discharge temperature sensor
TMP2	Dryer temperature sensor
KP1	PTC relay
S1	Start button compressor / dryer
S2	Stop button compressor / dryer
QN	Switch disconnecter / 3 poles
FTN	Overload relay
CE1	Compressor electronic controller
CE2	Dryer electronic controller
G1	Softstarter
A1	Frequency converter
PWM	PWM 4 ... 20ma converter
PV	Fan pressure switch (dryer)
PA	High pressure switch (dryer)
PB	Low pressure switch (dryer)
TK	Fan overload switch
IM	Indicator DE Maintenance
R1	Heating resistance / main motor
	Heating resistance / hermetic compressor
RFO	Oil filter restriction
RFA	Air filter restriction

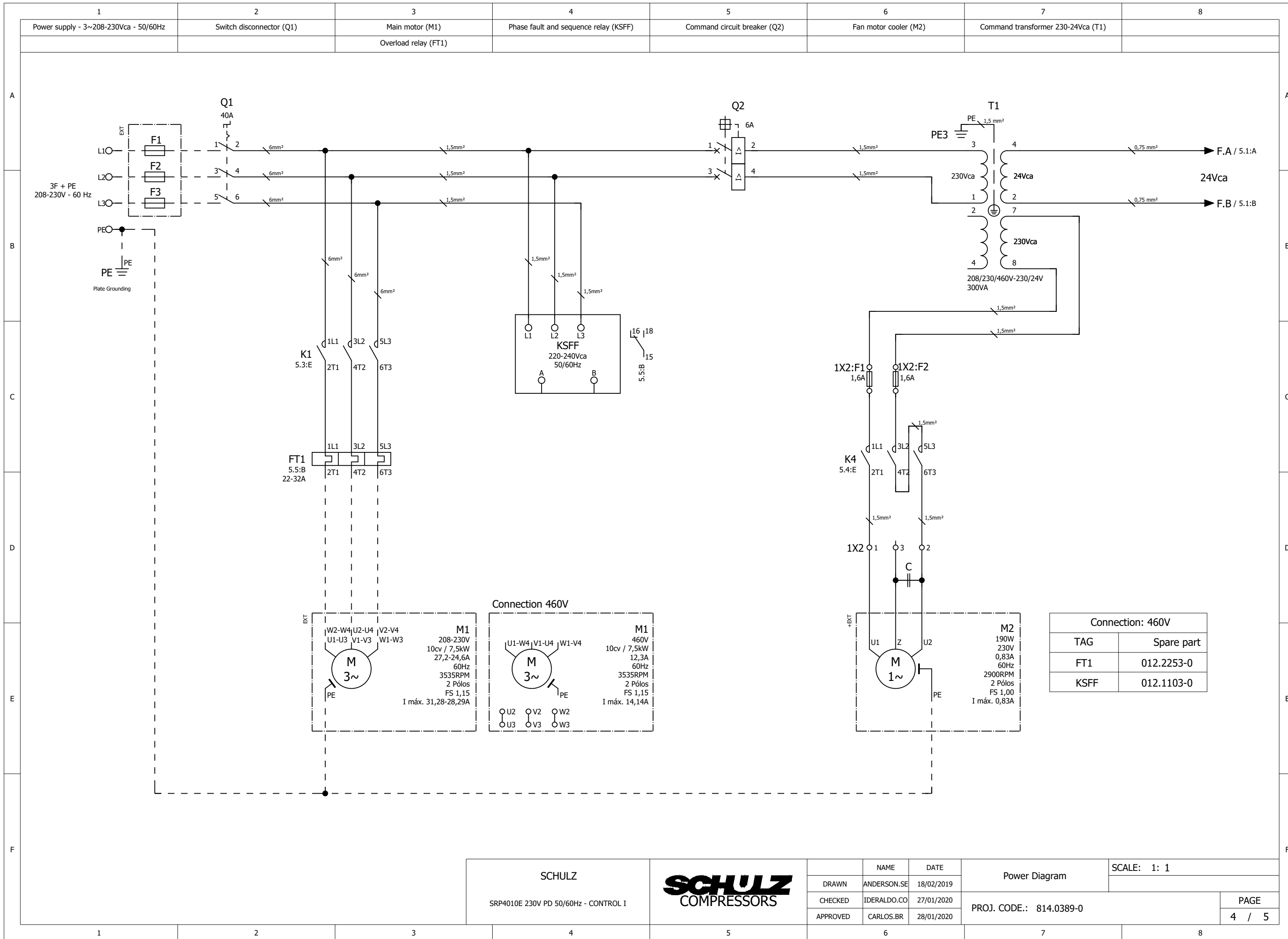
SCHULZ
 SRP4010E 230V PD 50/60Hz - CONTROL I



	NAME	DATE
DRAWN	ANDERSON.SE	18/02/2019
CHECKED	IDERALDO.CO	27/01/2020
APPROVED	CARLOS.BR	28/01/2020

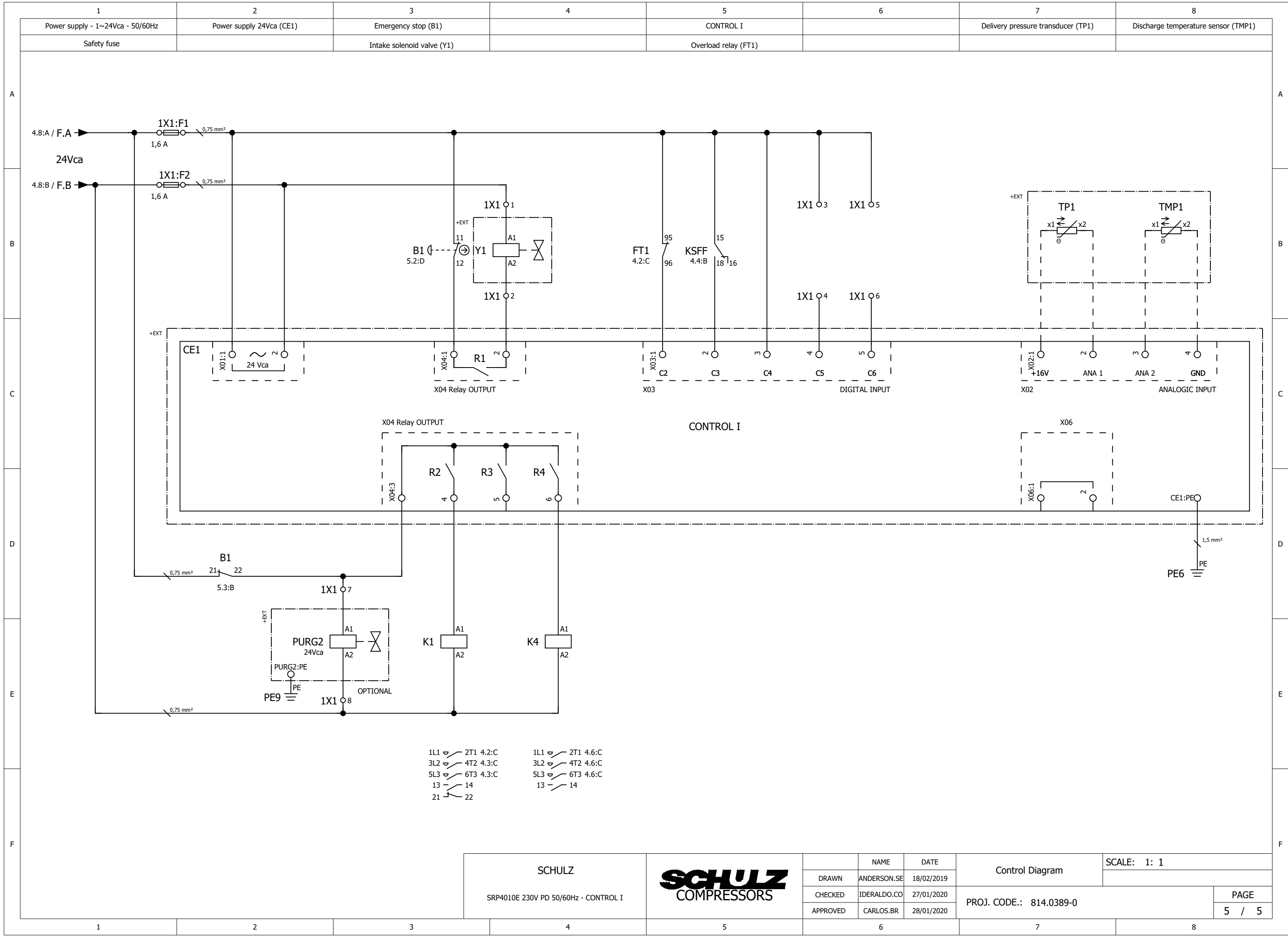
Legend	SCALE: 1: 1
PROJ. CODE.: 814.0389-0	PAGE 3 / 5

ATTENTION: This drawing is a SCHULZ COMPRESSORES Ltda property. All rights reserved. Is not allowed to copy its content without authorization. If you have any doubt, please contact Products Department of Schulz Compressors.



SCHULZ		NAME		DATE		Power Diagram		SCALE: 1: 1	
SRP4010E 230V PD 50/60Hz - CONTROL I		DRAWN ANDERSON.SE		18/02/2019		PROJ. CODE.: 814.0389-0		PAGE	
		CHECKED IDERALDO.CO		27/01/2020				4 / 5	
		APPROVED CARLOS.BR		28/01/2020					

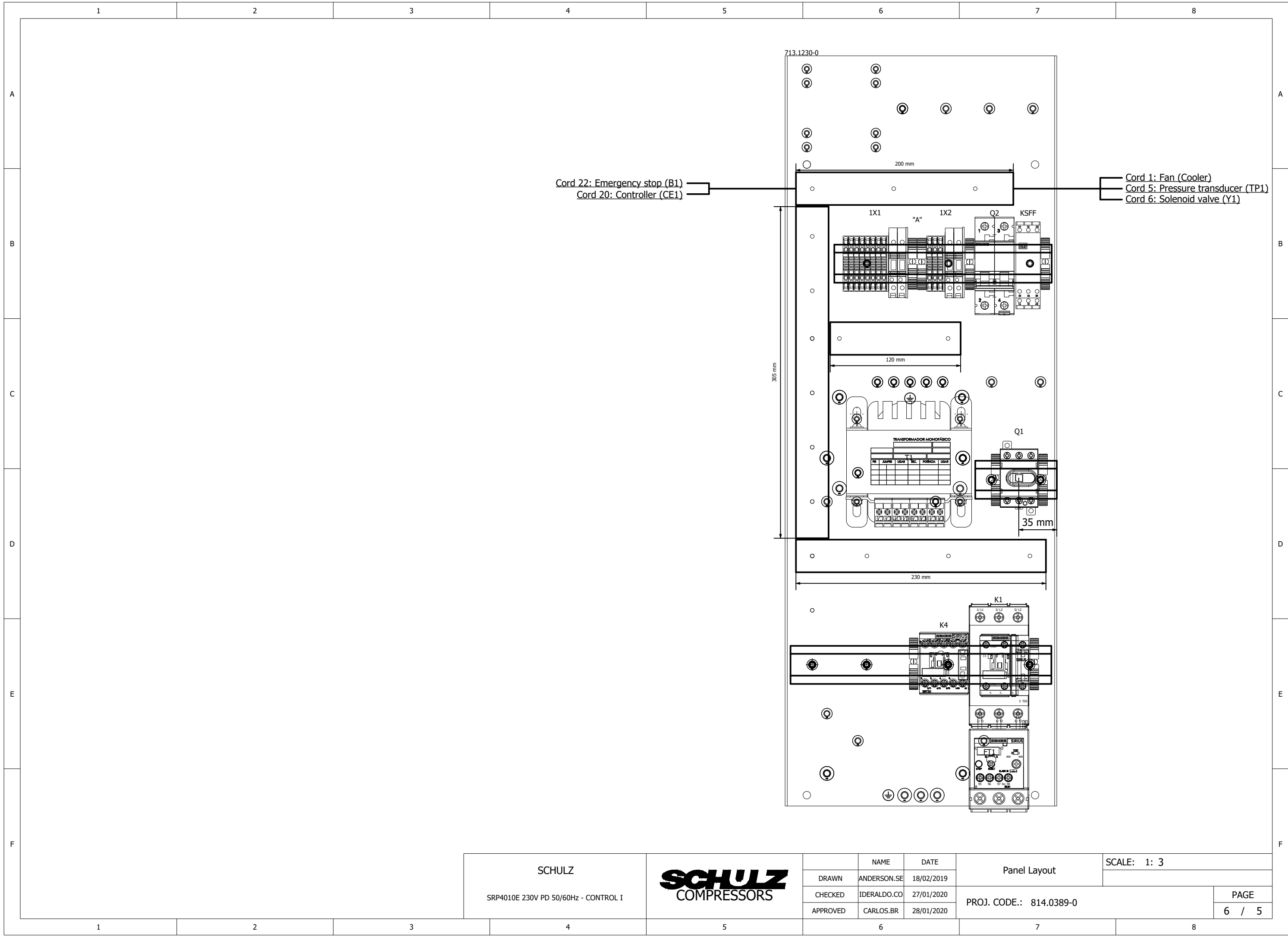
ATTENTION: This drawing is a SCHULZ COMPRESSORES Ltda property. All rights reserved. Is not allowed to copy its content without authorization. If you have any doubt, please contact Products Department of Schulz Compressors.



- 1L1 ⚡ 2T1 4.2:C
- 3L2 ⚡ 4T2 4.3:C
- 5L3 ⚡ 6T3 4.3:C
- 13 — 14
- 21 — 22
- 1L1 ⚡ 2T1 4.6:C
- 3L2 ⚡ 4T2 4.6:C
- 5L3 ⚡ 6T3 4.6:C
- 13 — 14

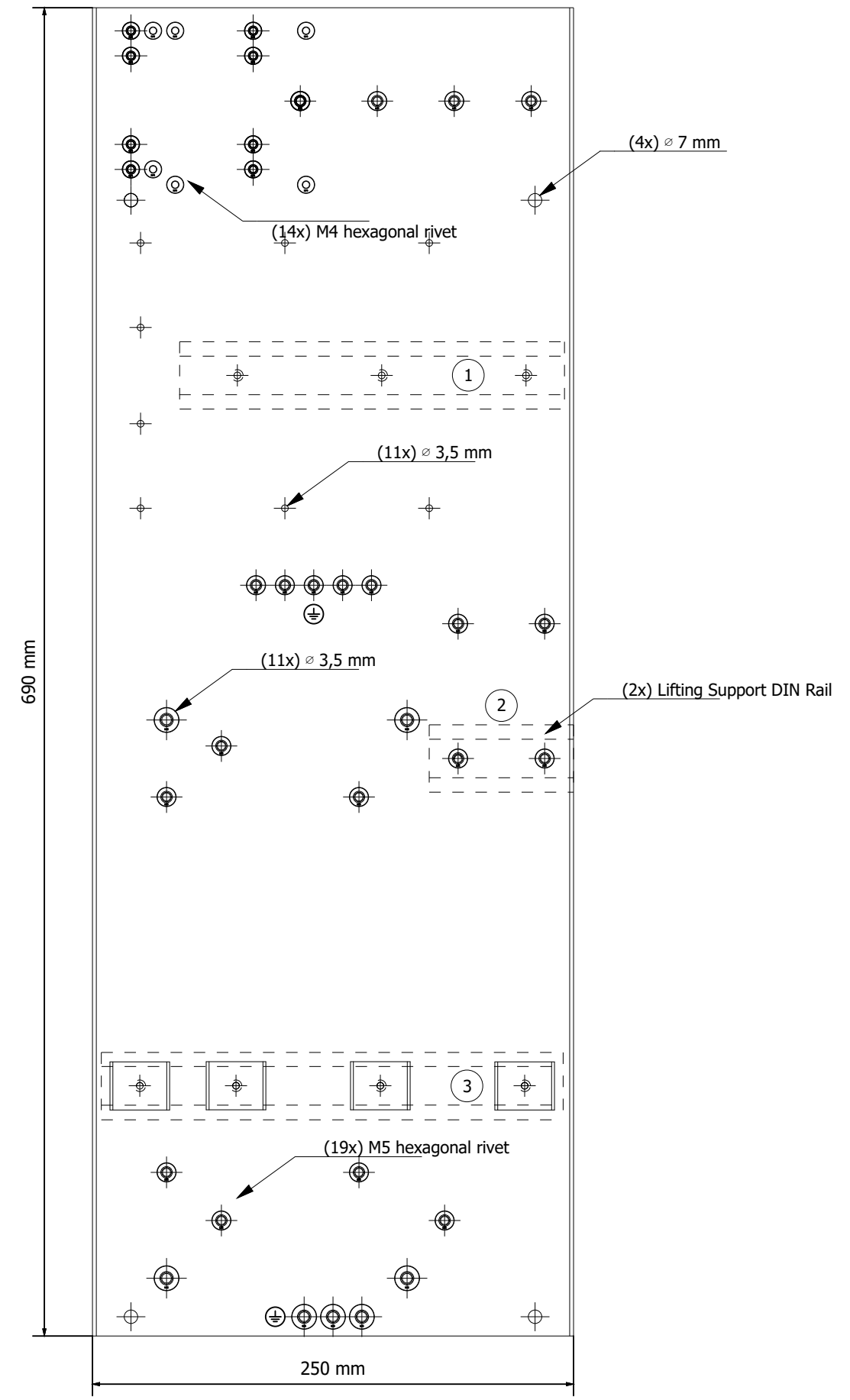
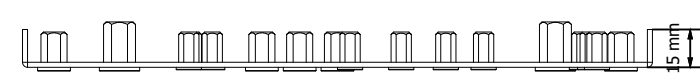
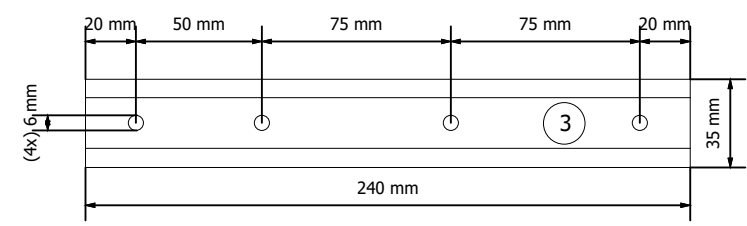
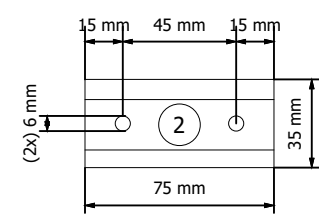
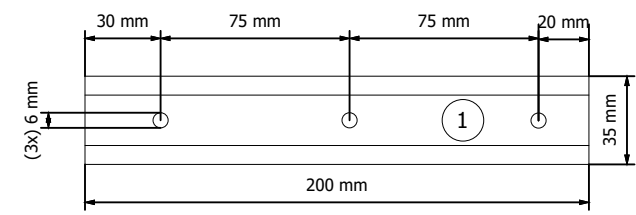
SCHULZ		SCHULZ COMPRESSORS		NAME	DATE	Control Diagram		SCALE: 1: 1	
SRP4010E 230V PD 50/60Hz - CONTROL I		DRAWN	ANDERSON.SE	18/02/2019	PROJ. CODE.: 814.0389-0		PAGE 5 / 5		
		CHECKED	IDERALDO.CO	27/01/2020					
		APPROVED	CARLOS.BR	28/01/2020					

ATTENTION: This drawing is a SCHULZ COMPRESSORES Ltda property. All rights reserved. Is not allowed to copy its content without authorization. If you have any doubt, please contact Products Department of Schulz Compressors.



SCHULZ SRP4010E 230V PD 50/60Hz - CONTROL I		NAME	DATE	Panel Layout	SCALE: 1: 3
		DRAWN	ANDERSON.SE		
		CHECKED	IDERALDO.CO	27/01/2020	PROJ. CODE.: 814.0389-0
APPROVED	CARLOS.BR	28/01/2020	6 / 5		

ATTENTION: This drawing is a SCHULZ COMPRESSORES Ltda property. All rights reserved. Is not allowed to copy its content without authorization. If you have any doubt, please contact Products Department of Schulz Compressors.



SCHULZ		SCHULZ COMPRESSORS	NAME	DATE	Mounting Plate Layout	SCALE: 1: 3	
SRP4010E 230V PD 50/60Hz - CONTROL I			DRAWN	ANDERSON.SE		18/02/2019	PROJ. CODE.: 814.0389-0
		CHECKED	IDERALDO.CO	27/01/2020	7 / 5		
		APPROVED	CARLOS.BR	28/01/2020			

ATTENTION: This drawing is a SCHULZ COMPRESSORES Ltda property.
 All rights reserved. Is not allowed to copy its content without authorization.
 If you have any doubt, please contact Products Department of Schulz Compressors.

Item	Project tags	Description	Manufacturer's code	Schulz code	Manufacturer	Quantity
01	713.1230-0	Base panel, Assembly, SRP 4010/4015 FLEX	Base panel, Assembly, SRP	713.1230-0	LASERVILLE	1
02	FT1	Overload relay, 22 - 32A, Size S2	Overload relay, 22 - 32A, Size	012.2184-0	SIEMEN	1
03	K1	Contactora, 40A, 24V AC	Contactora, 40A, 24V AC	012.1929-0	SIEMEN	1
04	K1	Surge suppressor, RC network, Size S2, 24/48V AC	Surge suppressor, RC network,	012.1948-0	SIEMEN	1
05	1X1;1X2;K1;K4;KSFF;Q1	End bracket, gray color	End bracket, gray color	012.1341-0	WEG	8
06	K4	Contactora, 7A, 24 V AC	Contactora, 7A, 24 V AC	012.1923-0	SIEMEN	1
07	K4	Surge suppressor, RC network, Size S00, 24/48V AC	Surge suppressor, RC network,	012.1947-0	SIEMEN	1
08	KSFF	Overload - RPW - FSF / 220 V AC	Overload - RPW - FSF / 220 V	012.1099-0	WEG	1
09	Q1	Switch disconnectora / 3 poles, 40A	Switch disconnectora / 3 poles,	012.1805-0	ABB	1
10	Q1	Handle panel door, 16 a 125A	Handle panel door, 16 a 125A	012.1815-0	ABB	1
11	Q1	Disconnectora rod, 130mm	Disconnectora rod, 130mm	012.1820-0	ABB	1
12	Q2	Miniature circuit-breaker, two-pole, 6A, C	Miniature circuit-breaker,	012.1962-0	SIEMEN	1
13	T1	Transformer Control, 300VA, 208/230/460V - 230/24V, 50/60Hz	Transformer Control, 300VA,	012.1882-0	PÓLUX	1
14	1X1;1X2	Terminal, Gray color, 2,5mm ²	Terminal, Gray color, 2,5mm ²	012.1336-0	WEG	11
15	1X1;1X2	End cover, Terminal, Gray color, 2,5mm ²	End cover, Terminal, Gray color,	012.1342-0	WEG	2
16;20	1X1;1X2	Fused terminal, gray color, 2,5mm ²	Fused terminal, gray color,	012.1339-0	WEG	4
17	1X1	Single safety fuse, 1,6A, fast, 5 X 20mm	Single safety fuse, 1,6A, fast, 5	012.1613-0	STP	2
18	1X1;1X2	End cover, Fused terminal, gray color, 2,5mm ²	End cover, Fused terminal, gray	012.1386-0	WEG	2
19	1X2	Single safety fuse, 1,6A, delayed, 5 X 20mm	Single safety fuse, 1,6A,	012.1622-0	STP	2

SCHULZ SRP4010E 230V PD 50/60Hz - CONTROL I	SCHULZ COMPRESSORS	NAME	DATE	Part List PROJ. CODE.: 814.0389-0	SCALE: 1: 1	PAGE 8 / 5	
		DRAWN	ANDERSON.SE				18/02/2019
		CHECKED	IDERALDO.CO				27/01/2020
APPROVED	CARLOS.BR	28/01/2020					

ATTENTION: This drawing is a SCHULZ COMPRESSORES Ltda property. All rights reserved. Is not allowed to copy its content without authorization. If you have any doubt, please contact Products Department of Schulz Compressors.

1	2	3	4	5	6	7	8
A	Project tags	Description		Project tags	Description		
	713.1230-0	Base panel, Assembly, SRP 4010/4015 FLEX					
	FT1	Overload relay, 22 - 32A, Size S2					
	K1	Contactor, 40A, 24V AC					
	K4	Contactor, 7A, 24 V AC					
B	KSFF	Overload - RPW - FSF / 220 V AC					
	Q1	Switch disconnecter / 3 poles, 40A					
	Q2	Miniature circuit-breaker, two-pole, 6A, C					
	T1	Transformer Control, 300VA, 208/230/460V - 230/24V, 50/60Hz					
	1X1	Terminal, Gray color, 2,5mm ²					
C	1X1	Terminal, Gray color, 2,5mm ²					
	1X1	Terminal, Gray color, 2,5mm ²					
	1X1	Terminal, Gray color, 2,5mm ²					
	1X1	Terminal, Gray color, 2,5mm ²					
	1X1	Terminal, Gray color, 2,5mm ²					
	1X1	Terminal, Gray color, 2,5mm ²					
	1X1	Terminal, Gray color, 2,5mm ²					
	1X1	Terminal, Gray color, 2,5mm ²					
	1X1	Fused terminal, gray color, 2,5mm ²					
	1X1	Fused terminal, gray color, 2,5mm ²					
D	1X2	Terminal, Gray color, 2,5mm ²					
	1X2	Terminal, Gray color, 2,5mm ²					
	1X2	Terminal, Gray color, 2,5mm ²					
	1X2	Fused terminal, gray color, 2,5mm ²					
	1X2	Fused terminal, gray color, 2,5mm ²					
E							
F							

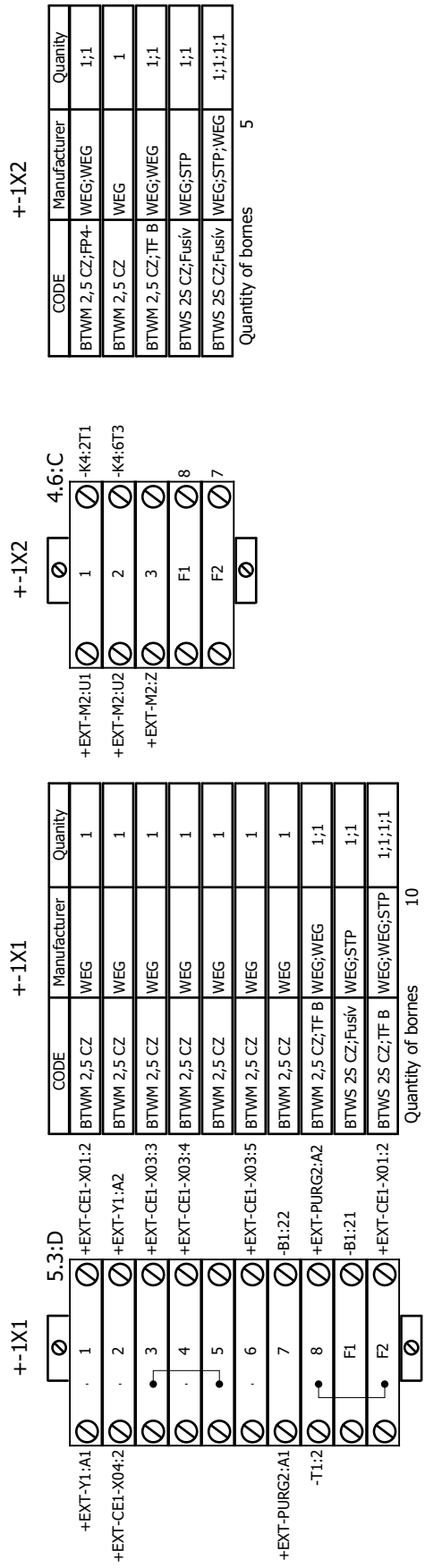
SCHULZ
SRP4010E 230V PD 50/60Hz - CONTROL I



	NAME	DATE
DRAWN	ANDERSON.SE	18/02/2019
CHECKED	IDERALDO.CO	27/01/2020
APPROVED	CARLOS.BR	28/01/2020

Device tag list PROJ. CODE.: 814.0389-0	SCALE: 1: 1 PAGE 9 / 5
--	---------------------------

ATTENTION: This drawing is a SCHULZ COMPRESSORES Ltda property. All rights reserved. Is not allowed to copy its content without authorization. If you have any doubt, please contact Products Department of Schulz Compressors.



SCHULZ
SRP4010E 230V PD 50/60Hz - CONTROL I



	NAME	DATE
DRAWN	ANDERSON.SE	18/02/2019
CHECKED	IDERALDO.CO	27/01/2020
APPROVED	CARLOS.BR	28/01/2020

Terminal Diagram	SCALE: 1: 1
PROJ. CODE.: 814.0389-0	PAGE 10 / 5