

ATTENTION: This drawing is a SCHULZ COMPRESSORES Ltda property. All rights reserved. Is not allowed to copy its content without authorization. If you have any doubt, please contact Products Department of Schulz Compressors.

Component	Description
K1	Contactor Line
K2	Contactor Delta
K3	Contactor Star
K4	Contactor Fan
K5	Contactor Dryer
K6	Contactor Fan Enclosure Electric
KA1	Contactor Auxiliary 1
KA2	Contactor Auxiliary 2
KA3	Contactor Auxiliary 3
KA4	Contactor Auxiliary 4
M1	Main motor
M2	Dryer fan (cooler)
M3	Hermetic compressor motor
M4	Fan dryer
M5	Electric panel fan
M6	Electric panel fan
FT1	Overload relay / main motor
FT2	Overload relay / fan cooler
QN	1-pole circuit breaker
QN	2 poles circuit breaker
FN	Command fuse

Component	Description
1X0	Power terminal
1X1	Control terminal / 24 VCA
1X2	Control terminal / 220 VCA
XSN	Bar terminal
TN	Transformer Control
B1	Emergency stop
Y1	Intake solenoid valve
Y2	Solenoid valve for modulating control
Y3	Solenoid valve, slow relief / pneumatic retention
PURG	Electronic condensate drain
KSFF	Phase fault and sequence relay
KTN	Timer relay
H	Hour meter
HN	Signal lamp
TR1	Thermometer / thermostat
P1	Load / Unload pressures switch
P2	Unload pressure switch
P3	Safety pressure switch
P4	Low pressure switch
TP1	Delivery pressure transducer
TP2	Internal pressure transducer

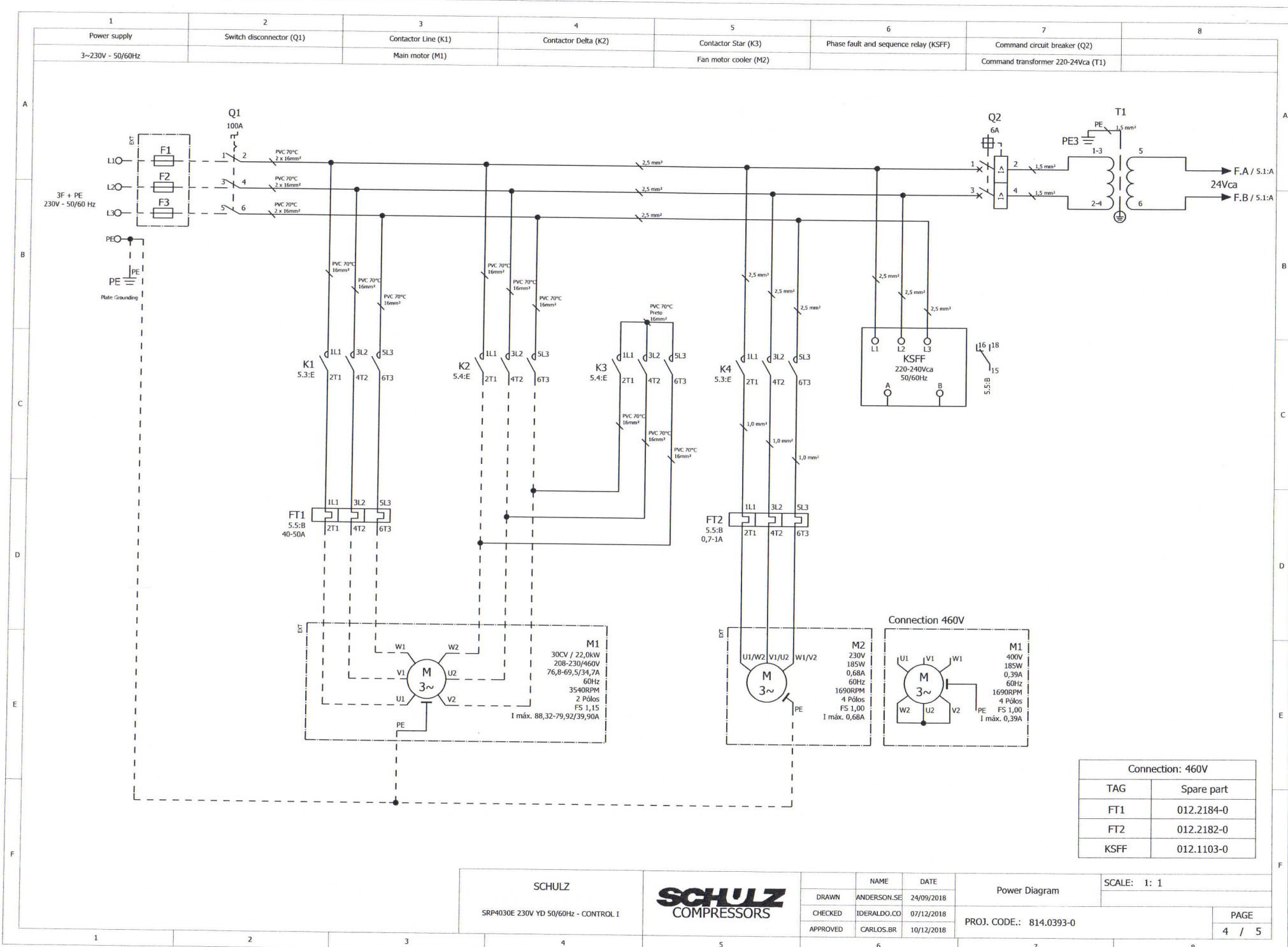
Component	Description
TMP1	Discharge temperature sensor
TMP2	Dryer temperature sensor
KP1	PTC relay
S1	Start button compressor / dryer
S2	Stop button compressor / dryer
QN	Switch disconnecter / 3 poles
FTN	Overload relay
CE1	Compressor electronic controller
CE2	Dryer electronic controller
G1	Softstarter
A1	Frequency converter
PWM	PWM 4 ... 20ma converter
PV	Fan pressure switch (dryer)
PA	High pressure switch (dryer)
PB	Low pressure switch (dryer)
TK	Fan overload switch
IM	Differential pressure switch
R1	Heating resistance / main motor
E1	Heating resistance / hermetic compressor

SCHULZ
 SRP4030E 230V YD 50/60Hz - CONTROL I



NAME	DATE	Legend	SCALE: 1: 1
DRAWN ANDERSON.SE	24/09/2018		
CHECKED IDERALDO.CO	07/12/2018		
APPROVED CARLOS.BR	10/12/2018	PROJ. CODE.: 814.0393-0	PAGE 3 / 5

ATTENTION: This drawing is a SCHULZ COMPRESSORES Ltda property.
 All rights reserved. Is not allowed to copy its content without authorization.
 If you have any doubt, please contact Products Department of Schulz Compressors.



Connection: 460V	
TAG	Spare part
FT1	012.2184-0
FT2	012.2182-0
KSFF	012.1103-0

SCHULZ
 SRP4030E 230V YD 50/60Hz - CONTROL I

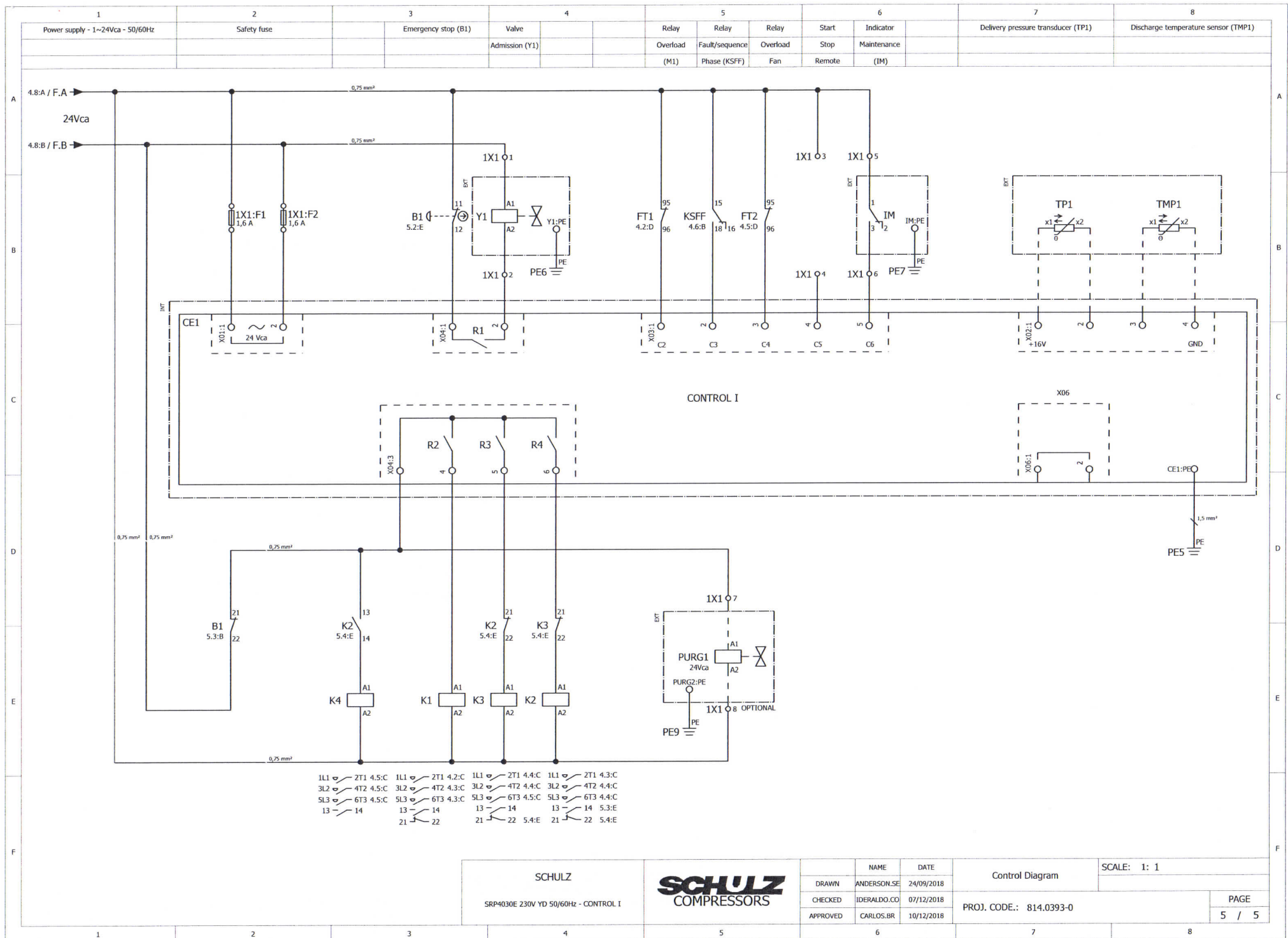


NAME	DATE
DRAWN ANDERSON.SE	24/09/2018
CHECKED IDERALDO.CO	07/12/2018
APPROVED CARLOS.BR	10/12/2018

Power Diagram
 PROJ. CODE.: 814.0393-0

SCALE: 1: 1	
PAGE	4 / 5

ATTENTION: This drawing is a SCHULZ COMPRESSORES Ltda property. All rights reserved. It is not allowed to copy its content without authorization. If you have any doubt, please contact Products Department of Schulz Compressors.

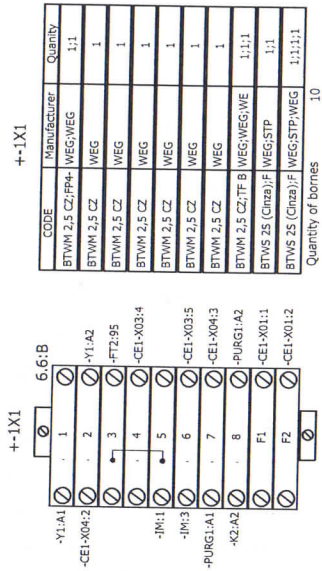


ATTENTION: This drawing is a SCHULZ COMPRESSORES Ltda property.
 All rights reserved. Is not allowed to copy its content without authorization.
 If you have any doubt, please contact Products Department of Schulz Compressors.

Item	Project tags	Description	Manufacturer's code	Schulz code	Manufacturer	Quantity
1	713.1331-0	Base panel, Assembly, SRP 4020-4040	Base panel, Assembly, SRP	713.1331-0	USIMETAL	1
2	FT1	Overload relay, 40 - 50A, Size S2	Overload relay, 40 - 50A, Size	012.1958-0	SIEMEN	1
3	FT2	Overload relay, 0,7 - 1A, Size S00	Overload relay, 0,7 - 1A, Size	012.1950-0	SIEMEN	1
4;8	K1;K2	Contactora, 50A, 24V AC	Contactora, 50A, 24V AC	012.1930-0	SIEMEN	2
5;9;11	K1...K3	Surge suppressor, RC network, Size S2, 24/48V AC	Surge suppressor, RC network,	012.1948-0	SIEMEN	3
6;7;15;17	1X1;K1;KSFF;Q1	End bracket, gray color	End bracket, gray color	012.1341-0	WEG	8
10	K3	Contactora, 40A, 24V AC	Contactora, 40A, 24V AC	012.1929-0	SIEMEN	1
12	K4	Contactora, 9A, 24V AC	Contactora, 9A, 24V AC	012.1924-0	SIEMEN	1
13	K4	Surge suppressor, RC network, Size S00, 24/48V AC	Surge suppressor, RC network,	012.1947-0	SIEMEN	1
14	KSFF	Overload - RPW - FSF / 220 V AC	Overload - RPW - FSF / 220 V	012.1099-0	WEG	1
16	Q1	Switch disconnecter / 3 poles, 100A	Switch disconnecter / 3 poles,	012.1808-0	ABB	1
19	Q1	Disconnecter rod, 180mm	Disconnecter rod, 180mm	012.1822-0	ABB	1
20	Q1	Handle panel door, 16 a 125A	Handle panel door, 16 a 125A	012.1815-0	ABB	1
21	Q2	Miniature circuit-breaker, two-pole, 6A, C	Miniature circuit-breaker,	012.1962-0	SIEMEN	1
22	T1	Transformer Control 200VA / 220/440V-24V - 50/60 Hz	Transformer Control 200VA /	012.2069-0	PÓLUX	1
23;25...31	1X1	Terminal, Gray color, 2,5mm ²	Terminal, Gray color, 2,5mm ²	012.1336-0	WEG	8
32	1X1	End cover, Terminal, Gray color, 2,5mm ²	End cover, Terminal, Gray color,	012.1342-0	WEG	1
34;36	1X1	Fused terminal, gray color, 2,5mm ²	Fused terminal, gray color,	012.1339-0	WEG	2
35;37	1X1	Single safety fuse, 1,6A, delayed, 5 X 20mm	Single safety fuse, 1,6A,	012.1622-0	STP	2
38	1X1	End cover, Fused terminal, gray color, 2,5mm ²	End cover, Fused terminal, gray	012.1386-0	WEG	1

SCHULZ		NAME		DATE		Part List		SCALE: 1: 1	
SRP4030E 230V YD 50/60Hz - CONTROL I		DRAWN ANDERSON.SE		24/09/2018					
		CHECKED IDERALDO.CO		07/12/2018		PROJ. CODE.: 814.0393-0		PAGE	
		APPROVED CARLOS.BR		10/12/2018				8 / 5	

ATTENTION: This drawing is a SCHULZ COMPRESSORES Ltda property.
 All rights reserved. Is not allowed to copy its content without authorization.
 If you have any doubt, please contact Products Department of Schulz Compressors.



SCHULZ
 SRP4030E 230V YD 50/60Hz - CONTROL I



NAME	DATE	Diagrama de Bornes	SCALE: 1: 1
DRAWN ANDERSON.SE	24/09/2018	PROJ. CODE.: 814.0393-0	PAGE 10 / 5
CHECKED IDERALDO.CO	07/12/2018		
APPROVED CARLOS.BR	10/12/2018		