



Gas engine must be purchased separately.

Direct-Drive Plunger Pump

Model 66PPX40GG1

FEATURES

- Triplex plunger design provides a smooth liquid flow.
- Special concentric, high-density, polished, solid ceramic plungers provide a true wear surface and extended seal life.
- Compact flange mount permits easy, direct mounting to most gas engines.

SPECIFICATIONS

U.S. Measure

Metric Measure

MODEL 66PPX40GG1

Flow.....	4.0 gpm	(15.0 lpm)
Pressure Range.....	100 to 4200 psi	(7 to 290 bar)
Stroke.....	0.449"	(11.4 mm)
Max. RPM.....	3400 rpm	(3400 rpm)
Engine Mounting Face.....	6.5"	(6.5")
Inlet Pressure Range.....	Flooded to 75 psi	(Flooded to 5.25 bar)
Bore.....	0.551"	(14 mm)
Shaft Diameter (Hollow).....	1"	(25.4 mm)
Max. Liquid Temperature.....	140°F	(60°C)
Above 130°F call Cat Pumps for inlet conditions and elastomer recommendations.		
Crankcase Capacity.....	18 oz.	(0.55 l)
Inlet Ports (2).....	1/2" NPTF	(1/2" NPTF)
Discharge Ports (2).....	3/8" NPTF	(3/8" NPTF)
Weight.....	23.95 lbs.	(10.9 kg)
Dimensions (Pump Only).....	10.0 x 9.09 x 6.38"	(254 x 231 x 162 mm)

ELECTRIC HORSEPOWER REQUIREMENTS

MODELS	FLOW		PRESSURE			RPM
			psi 2500	psi 3200	psi 4200	
	U.S. gpm	lpm	bar 175	bar 220	bar 290	
66PPX40GG1	4.0	15	6.9	8.8	11.5	3400

DETERMINING THE PUMP R.P.M.	$\frac{\text{Rated gpm}}{\text{Rated rpm}}$	=	$\frac{\text{"Desired" gpm}}{\text{"Desired" rpm}}$
DETERMINING THE REQUIRED H.P.	$\frac{\text{gpm} \times \text{psi}}{1460}$	=	Electric Brake H. P. Required
DETERMINING MOTOR PULLEY SIZE	$\frac{\text{Motor Pulley O.D.}}{\text{Pump rpm}}$	=	$\frac{\text{Pump Pulley O.D.}}{\text{Motor rpm}}$

Note: Consult engine manufacturer when using gas or diesel engine. Refer to pump **Service Manual** for repair procedure and additional technical information.

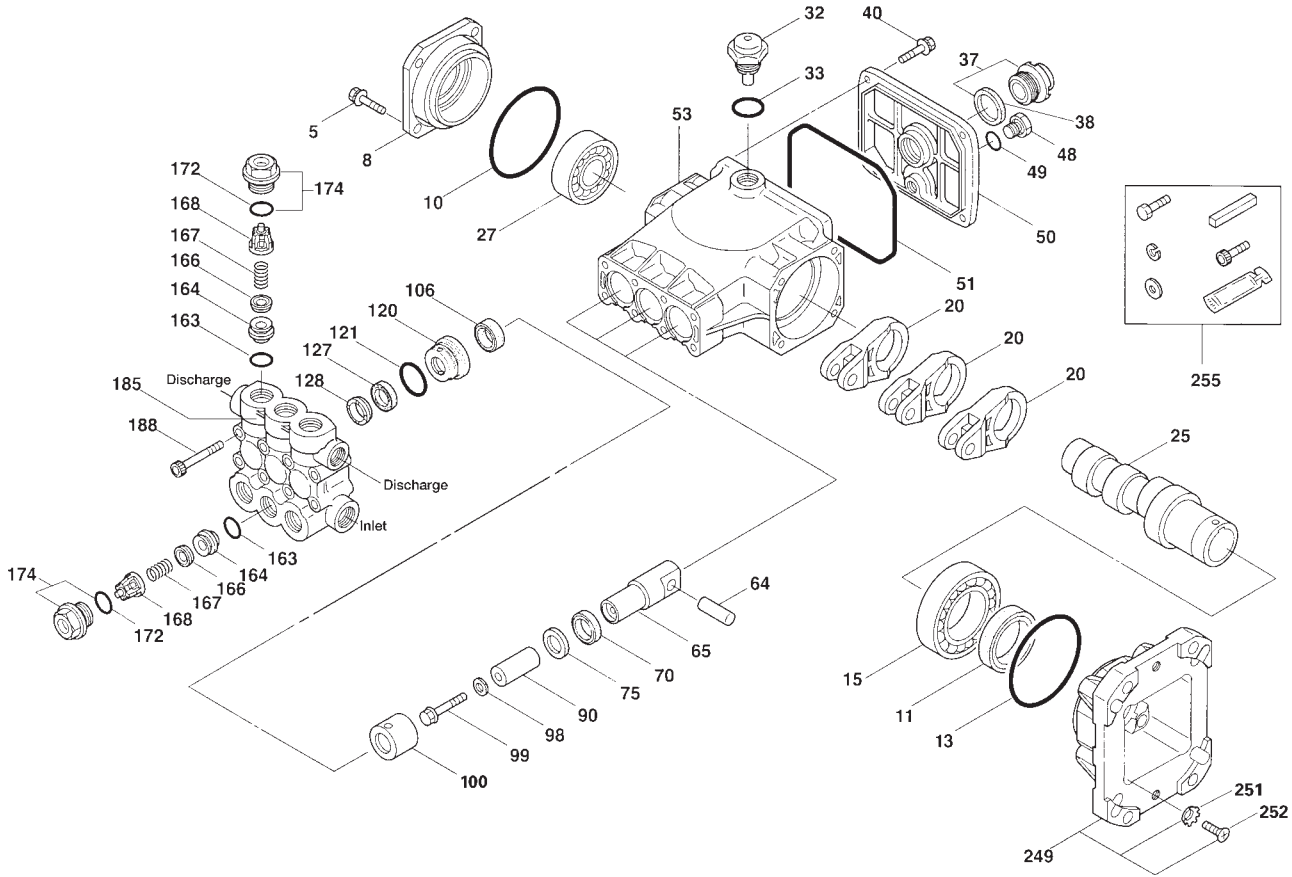
⚠ CAUTIONS AND WARNINGS

All High Pressure Systems require a primary pressure regulating device (i.e. regulator, unloader) and a secondary pressure relief device (i.e. pop-off valve, relief valve). Failure to install such relief devices could result in personal injury or damage to pump or property. CAT PUMPS does not assume any liability or responsibility for the operation of a customer's high pressure system.

Read all CAUTIONS and WARNINGS before commencing service or operation of any high pressure system. The CAUTIONS and WARNINGS are included in each service manual and with each Accessory Data sheet. CAUTIONS and WARNINGS can also be viewed online at www.catpumps.com/cautions-warnings or can be requested directly from CAT PUMPS.

WARRANTY

View the Limited Warranty on-line at www.catpumps.com/warranty.



PARTS LIST

ITEM	P/N	MATL	DESCRIPTION	QTY	ITEM	P/N	MATL	DESCRIPTION	QTY
5	125824	STCP R	Screw, HHC (M6x16)	4	98	46730	NBR	Washer Seal, Plunger Retainer - 90D	3
8	48259	AL	Cover, Bearing	1	99	48201	SS	Retainer, Plunger	3
10	14028	NBR	O-Ring, Bearing Cover - 70D	1	100	48755	NY	Retainer, Seal	3
11	125351	NBR	Seal, Oil, Crankshaft - 70D	1	106	45188	NBR	Seal, LPS w/S-Spg	3
13	14037	NBR	O-Ring, Bearing Cover	1	120	48759	BB	Case, Seal	3
15	146421	STL	Bearing, Ball - Inner	1	121	13980	NBR	O-Ring, Seal Case - 70D	3
20	48843	TNM	Rod, Connecting	3	127	48758	SNG	V-Packing	3
25	48839	CM	Crankshaft (11.4 mm)	1	128	48757	NY	Adapter, Male	3
27	14480	STL	Bearing, Ball - Outer	1	163	17547	NBR	O-Ring, Seat - 85D	6
32	46798	—	Cap, Domed, Oil Filler	1	164	45790	S	Seat	6
33	14179	NBR	O-Ring, Filler Cap - 70D	1	166	46429	S	Valve	6
37	92241	—	Gauge, Oil Bubble w/Gasket - 80D	1	167	43750	S	Spring	6
38	44428	NBR	Gasket, Flat, Oil Gauge - 80D	1	168	† 44565	PVDF	Retainer, Spring	6
40	125824	STCP R	Screw, HHC (M6x16)	4	172	17616	NBR	O-Ring, Valve Plug - 80D	6
48	25625	STCP	Plug, Drain (1/4"x19BSP)	1	174	48760	BB	Plug, Valve w/O-Ring	6
49	23170	NBR	O-Ring, Drain Plug - 70D	1	185	48846	BB	Head, Manifold	1
50	48862	AL	Cover, Rear	1	188	126512	STCP R	Screw, HSH (M8x65)	8
51	14048	NBR	O-Ring, Rear Cover	1	196	46690	BB	Plug, Discharge HSH 3/8" NPTM (Not Shown)	1
53	48830	AL	Crankcase	1	249	48841	AL	Flange, Adapter	1
64	46404	CM	Pin, Crosshead	3	251	126746	STCP R	Lockwasher, Conical (M8)	4
65	48845	BB	Rod, Plunger	3	252	46403	STZP	Screw, FH (M8x25)	4
70	48911	NBR	Seal, Oil, Crankcase	3	255	30510	STZP	Assy, Bolt Mount	1
75	48754	NBR	Slinger, Barrier	3	300	76118	NBR	Kit, Seal (Incls: 106 and 127)	1
90	48752	CC	Plunger (M14x47)	3	310	76157	NBR	Kit, Valve (Incls: 163, 164, 166, 167, 168)	2

Italics are optional items.

R Components comply with RoHS Directive. † Production parts different from service parts. View Tech Bulletins 024, 060, 074, 083, and 101 for additional information.

MATERIAL CODES (Not Part of Part Number): AL=Aluminum BB=Brass CC=Ceramic CM=Chrome-moly NBR=Medium Nitrile (Buna-N) NY=Nylon S=304SS

SNG=Special Blend (Buna) SS=316SS STCP=Steel/Chrome Plated STL=Steel STZP=Steel/Zinc Plated TNM=Special High Strength



CAT PUMPS

1681 - 94TH LANE N.E. MINNEAPOLIS, MN 55449-4324

PHONE (763) 780-5440 — FAX (763) 780-2958

e-mail: techsupport@catpumps.com

www.catpumps.com