



# SELF-PRIMING 'T' PUMPS

*EXCELLENT FOR PUMPING SOFT SOLIDS, DIRTY WATER, SALT WATER AND MANY OTHER EFFLUENTS AROUND THE FARM, ON THE WATER OR AT THE JOB SITE.*

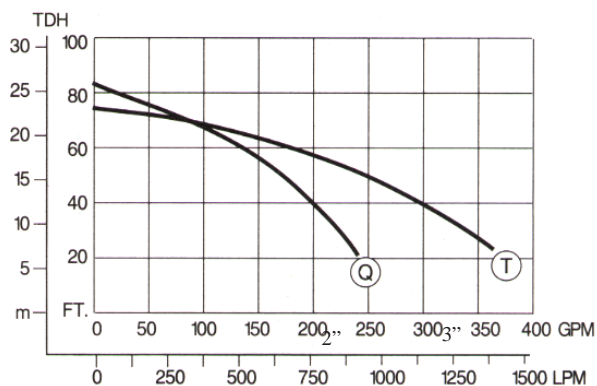


## PUMP:

- Pump is constructed of corrosion resistant polyester with urethane coated impeller and volute.
- Buna-N elastomers and wearplate.
- Stainless steel fasteners and quick-release band clamp for easy clean out.
- Available in 2" or 3" for maximum flows.
- Self-priming with vertical suction lift to 25 feet.
- Rough service oil lubricated silicon carbide shaft seal.
- Includes 2" or 3" zinc coated suction strainer.

## ENGINE:

- 2" pump is available with Briggs & Stratton 6.5 HP Vanguard (Commercial Power) engine with 3 year engine warranty, or Honda GX 160 Series OHV Commercial Series
- 3" pump is available with either Briggs & Stratton 8HP Vanguard or Honda 8 HP GX 240 OHV Commercial Series.



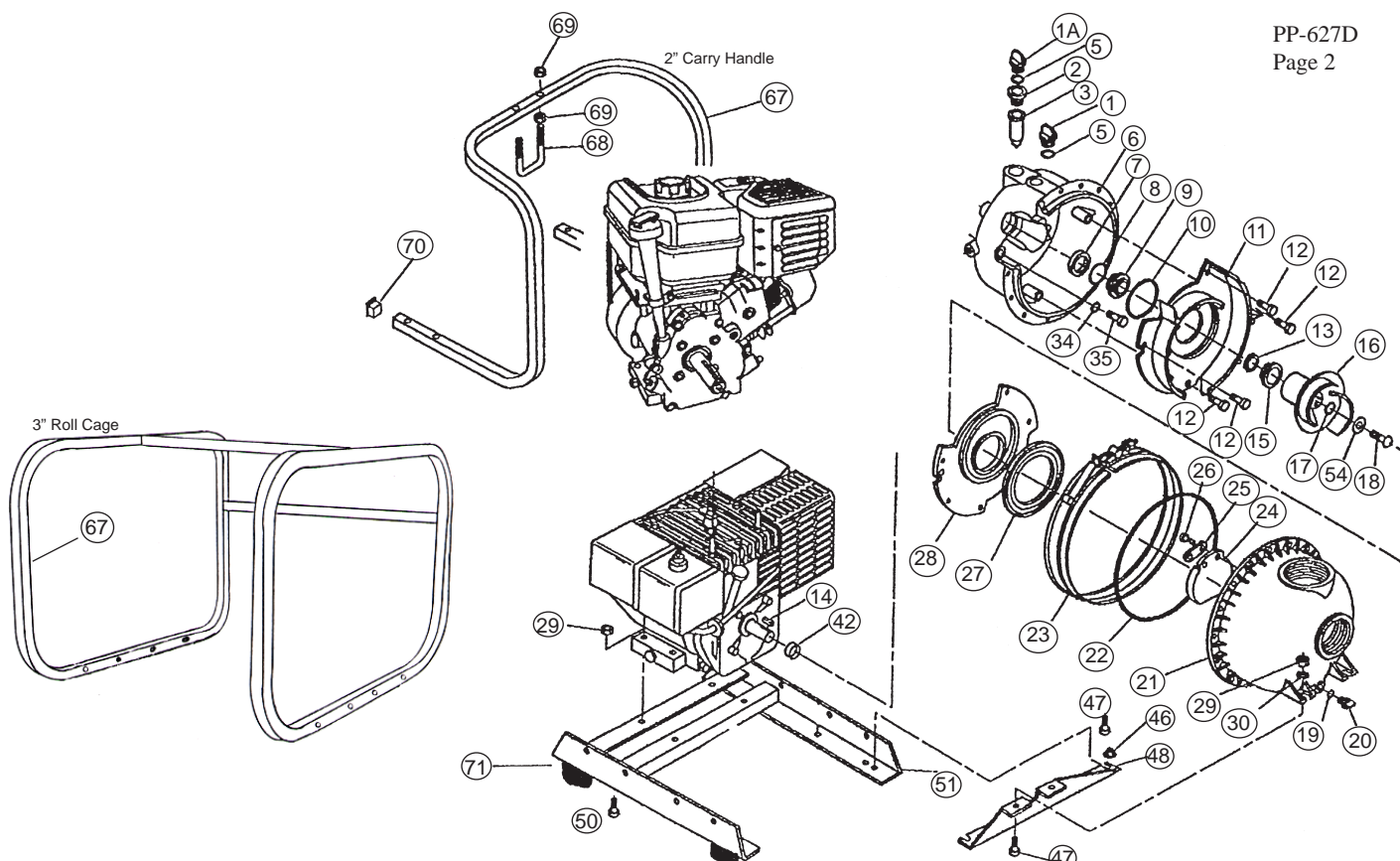
## PUMP SPECIFICATIONS

CURVE	MODEL	ENGINE	PORT SIZE	MAX. FLOW	MAX. TDH	WT.
Q	TE2QBB E6VC K TE2QBB E5HC K	6.5HP B&S Vanguard Honda GX 160	2"	240 GPM	83' (36 psi)	85 lbs 85 lbs
T	TE3TBB E8VC K TE3TBB E8HC K	8 HP B&S Vanguard 8 HP Honda GX 240	3"	360 GPM	78' (33 psi)	116 lbs 120 lbs

# PACER PUMPS

41 Industrial Circle  
Lancaster PA 17601-5927  
www.pacerpumps.com  
Email: sales@pacerpumps.com

800-233-3861  
717-925-8240  
Fax: 717-656-0477



PARTS LIST FOR MODEL NO. TE2QBB and TE3TBB

Ref. No.	DESCRIPTION	QTY/PUMP	TE2QBB	TE3TBB
1	Filler plug, polyester	1	P-58-0722 30B	P-58-0722 30B
1A	Oil lube filler plug	1	P-58-0722 30B	P-58-0722 30B
2	Retainer, lube tube	1	P-58-46294 30	P-58-46294 30
3	Lubrication tube, Buna	1	P-58-46215 71	P-58-46215 71
5	O-ring, filler plug	2	P-58-0765 71	P-58-0765 71
6	Bracket assy. (includes 1,1A,2,3,5,6,7,8,9)	1	P-58-46218 31B	P-58-46208 31B
7	Oil lip seal	1	P-58-46314 11	P-58-46313 11
8,9 & 15	Shaft seal assy. stainless steel siliconized graphite, Buna-N	1	P-58-46250 11	P-58-46251 11
10	O-ring, volute	1	P-58-1203 71	P-58-46292 71
11	Volute, urethane coated with steel core	1	P-58-46224 80	P-58-46204 80
12	Volute screw, 1/4"-20 x 1", stainless steel	as required	P-58-46269 10	P-58-46269 10
13	Shim, impeller, .006"	as required	P-58-0778 11	--
	Shim, impeller, .015"	as required	P-58-0778 12	P-58-46338 10
	Shim, impeller, .030"	as required	P-58-0778 13	--
14	Key, steel	1	P-58-46339	P-58-46278
16	Impeller, urethane coated with steel core *Optional impeller, Polymar 656, solid molded (non-metallic) optional	1	P-58-46229 80 P-58-46229 90	P-58-46214 80
17	O-ring for impeller screw,	1	P-58-46291 71	P-58-46290 71
18	Screw, impeller, stainless steel	1	P-58-0715 10	P-58-46309 10
19	O-ring, drain plug, Buna-N	1	P-58-1009 71	P-58-1009 71
20	Drain plug, polyester	1	P-58-0723 30	P-58-0723 30
21	Body assy. (includes 19,20,24,25,26,27)	1	P-58-46252 31B	P-58-46207 31B
22	O-ring, body, Buna-N	1	P-58-46304 71	P-58-46304 71
23	Clamp, V-band, stainless steel	1	P-58-46305 10	P-58-46305 10
24	Check valve, Buna-N	1	P-58-46217 71	P-58-46217 71
25	Retainer, check valve, polyester	1	P-58-46344 30	P-58-46344 30
26	Screw, check valve retainer	2	P-58-1348 10	P-58-1348 10
27	Suction gasket, Buna-N	1	P-58-46206 71	P-58-46206 71
28	Wearplate, Buna-N coated with steel core	1	P-58-46225 91	P-58-46205 91
29	Kepnut, 5/16"-18, plated steel	as required	P-58-0745	P-58-0745
30	Flat washer, 5/16" plated steel	as required	P-58-0730	P-58-0730
34	O-ring, bracket screw, Buna-N	4	P-58-0717 71	P-58-0717 71
35	Bracket screw, stainless steel	4	P-58-0715 10	P-58-46308 10
	Bracket Screw (for diesel engine only)	4	P-58-0715 10L	--
42	Slinger	1	P-58-46219 10	P-58-46266 71
46	Nut, flange, 5/16"-18 plated steel	2	P-58-46280	P-58-46280
47	Screw, 5/16"-18 x 1", plated steel	as required	P-58-0729	P-58-0729
48	Support, front housing	1	P-58-46306	P-58-46365
50	Screw, 5/16"-18 x 1 1/2, plated steel	as required	P-58-2167	P-58-2167
51	Chassis	1	P-58-46310	P-58-46379
54	Washer, impeller screw, rubber coated	1	P-58-46341	--
65	Suction strainer	1	P-58-46286	P-58-46287
67	Carry handle or roll cage	1	P-58-2035	P-58-46254
68	U-bolt, plated steel	1	P-58-2036	--
69	Hex nut, 3/8"-16, plated steel	4	P-58-2037	--
70	Finishing cap	2	P-58-0726 90	--
71	Rubber feet kit	1	P-58-0727 90	P-58-46378 90