

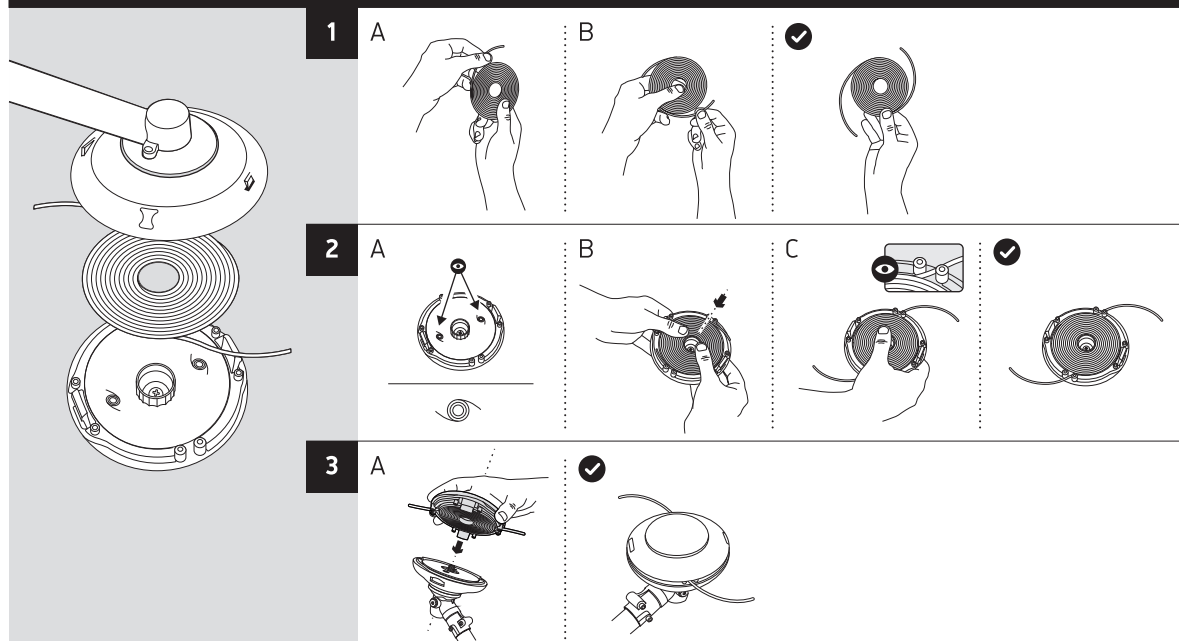


Install / Installer / Instalar

|  |          |          |   |   |   |   |   |
|--|----------|----------|---|---|---|---|---|
|  | <b>1</b> | A        | B | C | ✓ |   |   |
|  |          | A        | B | C | ✓ |   |   |
|  | <b>2</b> | A        | B | C | D | ✓ |   |
|  |          | A        | B | C | D | ✓ |   |
|  |          | <b>3</b> | A | B | C | D | ✓ |
|  |          |          | A | B | C | D | ✓ |

[OregonProducts.com/GSL/FAQ](http://OregonProducts.com/GSL/FAQ)

## Load / Charger / Cargar



0.095" / 2.4 mm

M8 x 1.25 mm (LHF)  
M8 x 1.25 mm (LHM)M10 x 1.25 mm (LHF)  
M10 x 1.25 mm (LHM)M7 x 1.0 mm (LHM)  
M10 x 1.0 mm (LHF)

Straight Shaft / Arbre Droit / Eje Recto: 1B / 3C

Oregon®, Gator®, and SpeedLoad™ are trademarks of Blount, Inc. All other marks are property of their respective owners.

Oregon®, Gator®, et SpeedLoad™ sont des marques de Blount, Inc. Toutes les autres marques sont la propriété de leurs sociétés respectives.

Oregon®, Gator®, y SpeedLoad™ son marcas de Blount, Inc. Todas las demás marcas son de propiedad de sus respectivos dueños.