

INSTALLATION INSTRUCTIONS low voltage control electric unit heaters

WARNING

1. Disconnect power supply before making wiring connections to prevent electrical shock and equipment damage.
2. All units must be wired strictly in accordance with wiring diagram furnished with the unit. Any wiring different from the wiring diagram could result in a hazard to persons and property.
3. All wiring must be done with a wiring material having a temperature rating of at least 105°C.

IMPORTANT

The use of this manual is specifically intended for a qualified installation and service agency. All installation and service of these units must be performed by a qualified installation and service agency. Modine manuals may contain excerpts from component supplier literature adapted for Modine products. Any accompanying component supplier literature is for general information.

Description

The 240/25 or 208/25 volt transformer relay is rated for resistive loads up to 6000 watts or motor loads up to twelve amps. Units with 480V supply voltage (33 power code) come standard with a 480V to 240V transformer making the low voltage control kit compatible with power code 33. Wiring of this control kit should only be performed by a qualified electrician.

Description	Part Number	
	240/25V	208/25V
Transformer Relay	5H70983B1	5H70983B2

Installation and Wiring - HER models

1. Disconnect power supply before making wiring connections to prevent electrical shock and equipment damage. All units must be wired strictly in accordance with wiring diagram furnished with the unit.
2. Open the hinged bottom panel.
3. Insert the transformer relay lead wires into the control wiring hole in the back panel.
4. Fasten the transformer relay to the back panel with the locknut, as shown in Figure 1.
5. Wire transformer relay per Figure 2. Be sure to connect yellow wire to fan motor lead not attached to control terminal block. Refer to wiring diagram on inside of bottom pan.

Any damage to, or failure of Modine units caused by incorrect wiring of the units is not covered by Modine's standard warranty.

Figure 1
Installation - HER models

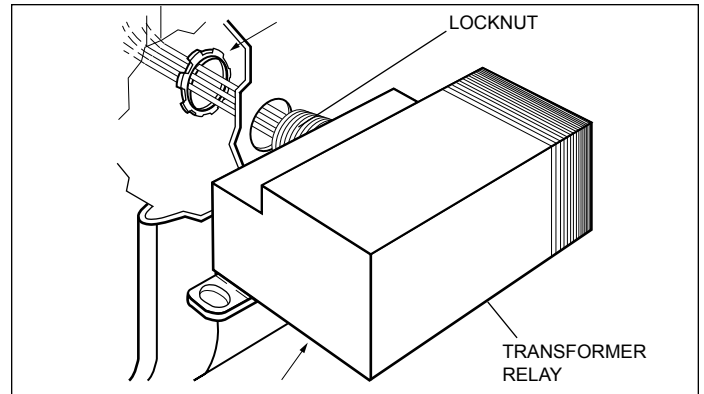
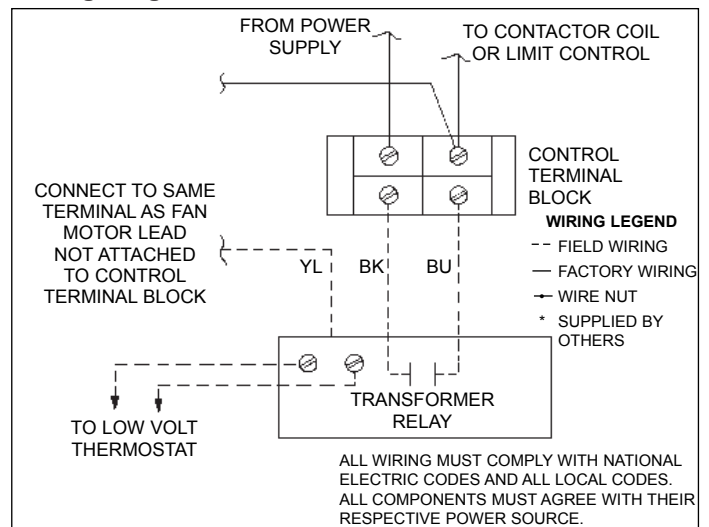


Figure 2
Wiring Diagram - HER models



Installation and Wiring - VE and PTE models

1. Disconnect power supply before making wiring connections to prevent electrical shock and equipment damage. All units must be wired strictly in accordance with wiring diagram furnished with the unit.
2. Remove cover from power junction box.
3. Insert the transformer relay lead wires into the control wiring hole in the power junction box.
4. Fasten the transformer relay to the power junction box with the locknut.
5. Wire the transformer relay per Figures 4, 5, or 6. Refer to wiring diagram on inside of power junction box cover.
6. For the VE & PTE 300, 400, and 500 only, a jumper wire (14 ga. minimum) must be added between the "L" and "H" terminals of the control terminal block.

2-518.5 ELECTRIC UNIT HEATERS INSTALLATION INSTRUCTIONS

! WARNING

1. Disconnect power supply before making wiring connections to prevent electrical shock and equipment damage.
2. All units must be wired strictly in accordance with wiring diagram furnished with the unit. Any wiring different from the wiring diagram could result in a hazard to persons and property.
3. All wiring must be done with a wiring material having a temperature rating of at least 105°C.

Wiring Legend

- field wiring
- factory wiring
- wire nut
- * supplied by others

All wiring must comply with national electric code and all local codes.

All components must agree with their respective power source.

Figure 3
Installation - VE and PTE models

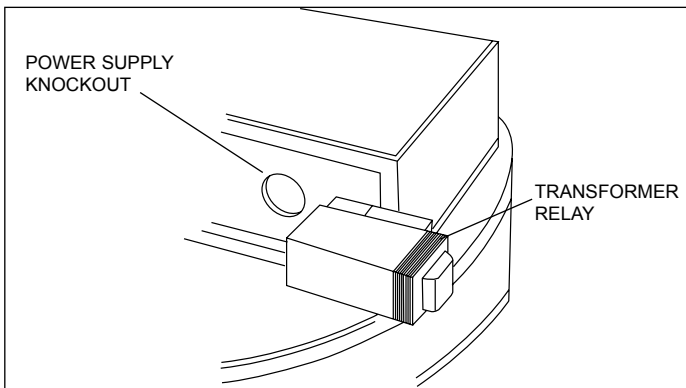


Figure 4
Wiring Diagram
models VE50-250 – 208 or 240V power supply

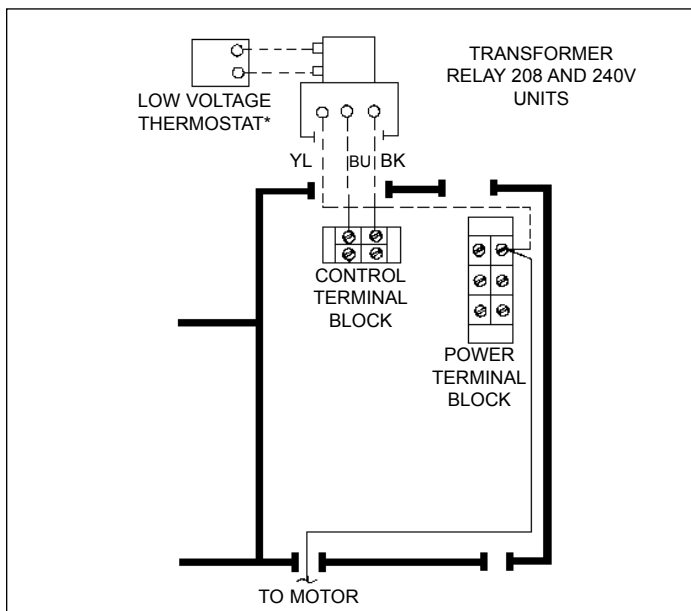


Figure 5
Wiring Diagram
models VE50-250 – 480V power supply

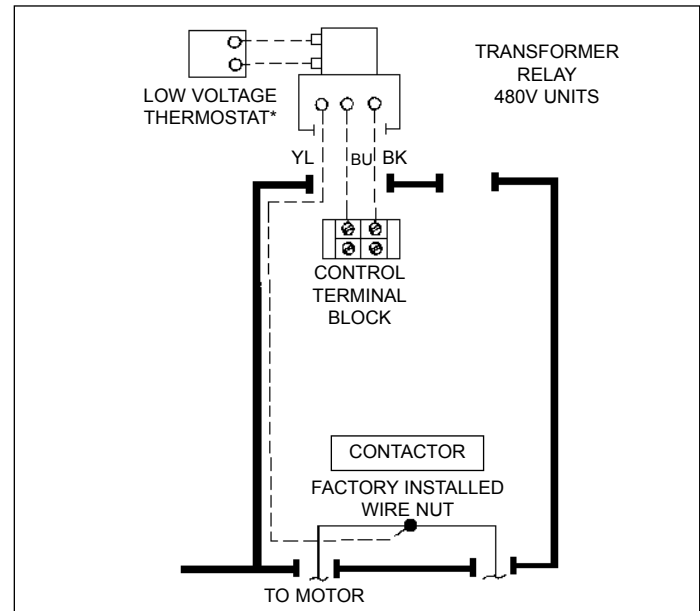


Figure 6
Wiring Diagram -
models VE300, 400, 500/PTE300, 400 & 500

