

Job Name:

System Reference:

Date:

Indoor Unit:
PLA-A24EA7

Outdoor Unit:
 PUZ-A24NHA7
 PUZ-A24NHA7-BS



INDOOR UNIT FEATURES

- Space-efficient ductless installation
- Equipped with 3D i-see Sensor™ for enhanced comfort and energy efficiency
- Airflow settings for high and low ceiling applications
- Individual vane settings for direct/indirect airflow control or variable airflow patterns
- Knockouts for outside-air intake and branch-duct run
- Filter indicator signal
- Easy-to-clean, washable filter (optional high-efficiency filter available - requires multi-function casement)
- Built-in condensate lift mechanism
- Ideal for retail shops, classrooms, office spaces, conference centers, building lobbies, and more

OUTDOOR UNIT FEATURES

- Variable speed INVERTER-driven compressor
- Suction accumulator pre-charged with refrigerant volume for piping length up to 100 ft (70 ft. for A12/18/24/30)
- 24-hour continuous operation (cooling mode)
- High pressure protection
- Fast restart due to bypass valve make it ideal for equipment cooling applications, such as data centers
- Superior energy and operational efficiency

SPECIFICATIONS: PLA-A24EA7 & PUZ-A24NHA7(-BS)

| Model Number | Indoor Unit | | PLA-A24EA7 |
|-------------------------------|---|---------|----------------------------|
| | Outdoor Unit | | PUZ-A24NHA7 |
| | | | PUZ-A24NHA7-BS |
| Cooling ¹ | Maximum Capacity | Btu/h | 24,000 |
| | Rated Capacity | Btu/h | 24,000 |
| | Minimum Capacity | Btu/h | 10,000 |
| | Maximum Power Input | W | 1,670 |
| | Rated Power Input | W | 1,670 |
| | Moisture Removal | Pints/h | 3.0 |
| | Sensible Heat Factor | | 0.86 |
| | Power Factor | % | 94.3 |
| Heating at 47° F ² | Maximum Capacity | Btu/h | 29,000 |
| | Rated Capacity | Btu/h | 26,000 |
| | Minimum Capacity | Btu/h | 9,000 |
| | Maximum Power Input | W | 2,070 |
| | Rated Power Input | W | 1,750 |
| | Power Factor | % | 95.1 |
| Heating at 17° F ³ | Maximum Capacity | Btu/h | 17,400 |
| | Rated Capacity | Btu/h | 14,900 |
| | Maximum Power Input | W | 1,670 |
| | Rated Power Input | W | 1,600 |
| Efficiency | SEER | | 24.2 |
| | EER ¹ | | 14.3 |
| | HSPF (IV) | | 11.2 |
| | COP at 47° F ² | | 4.35 |
| | COP at 17° F ³ | | 2.72 |
| | ENERGY STAR® Certified (ENERGY STAR products are third-party certified by an EPA-recognized Certification Body) | | Yes |
| Electrical | Voltage, Phase, Frequency | | 208 / 230V, 1-phase, 60 Hz |
| | Guaranteed Voltage Range | V AC | 198 – 253 |
| | Voltage: Indoor - Outdoor, S1-S2 | V AC | 208 / 230 |
| | Voltage: Indoor - Outdoor, S2-S3 | V DC | 24 |
| | Voltage: Indoor - Remote controller | V DC | 12 |
| | Recommended Fuse/Breaker Size | A | 25 |
| | Recommended Wire Size (Indoor - Outdoor) | AWG | 14 |
| Indoor Unit | MCA | A | 1.00 |
| | Fan Motor Full Load Amperage | A | 0.60 |
| | Fan Motor Output | W | 120 |
| | Airflow Rate, Dry | CFM | 530-640-710-810 |
| | Airflow Rate, Wet | CFM | 490-600-670-770 |
| | External Static Pressure | in.WG | n/a |

SPECIFICATIONS: PLA-A24EA7 & PUZ-A24NHA7(-BS)

| Model Number | Indoor Unit | | PLA-A24EA7 |
|---|---|-------------|---------------------------------|
| | Outdoor Unit | | PUZ-A24NHA7 |
| | | | PUZ-A24NHA7-BS |
| | Sound Pressure Level | dB(A) | 28-30-33-36 |
| | Drain Pipe Size | In. (mm) | 1-1/4 (32) |
| | Condensate Lift Mechanism, Max. Distance | In. | 33-7/16 |
| | Heat Exchanger Type | | Plate fin coil |
| | External Finish Color | | White Munsell 6.4Y 8.9/0.4 |
| | Unit Dimensions // Grille Dimensions | W: In. (mm) | 33-1/16 (840) // 37-13/32 (950) |
| | | D: In. (mm) | 33-1/16 (840) // 37-13/32 (950) |
| | | H: In. (mm) | 11-3/4 (298) // 1-9/16 (40) |
| | Package Dimensions // Grille Dimensions | W: In. (mm) | 35-9/16 // 39-6/16 |
| | | D: In. (mm) | 34-5/16 // 38-3/16 |
| | | H: In. (mm) | 16-9/16 // 4-12/16 |
| | Unit Weight // Grille Weight | Lbs. (kg) | 56 (25) // 11 (5) |
| | Package Weight | Lbs. (kg) | 68 (31) |
| Indoor Unit Operating Temperature Range | Cooling Intake Air Temp (Maximum / Minimum) | °F | 90 DB, 73 WB / 66 DB, 59 WB |
| | Heating Intake Air Temp (Maximum / Minimum) | °F | 82 DB / 50 DB |
| Outdoor Unit | MCA | A | 19 |
| | MOCP | A | 26 |
| | Fan Motor Full Load Amperage | A | 0.40 |
| | Fan Motor Output | W | 86 |
| | Airflow Rate | CFM | 1,940 |
| | Refrigerant Control | | Electronic Expansion Valve |
| | Defrost Method | | Reverse Cycle |
| | Heat Exchanger Type | | Cross fin |
| | Sound Pressure Level, Cooling ¹ | dB(A) | 47 |
| | Sound Pressure Level, Heating ² | dB(A) | 48 |
| | Compressor Type | | Inverter-driven twin rotary |
| | Compressor Model | | SNB172FWHM1 |
| | Compressor Rated Load Amps | A | 7 |
| | Compressor Locked Rotor Amps | A | 11 |
| | Compressor Oil Type // Charge | oz. | FV50S // 23 |
| | External Finish Color | | Ivory Munsell 3Y 7.8/1.1 |
| | Base Pan Heater | | n/a |
| | Unit Dimensions | W: In. (mm) | 37-13/32 (950) |
| | | D: In. (mm) | 13 + 1-3/16 (330 + 30) |
| | | H: In. (mm) | 37-1/8 (943) |
| Package Dimensions | W: In. (mm) | 40-15/16 | |
| | D: In. (mm) | 17-11/16 | |
| | H: In. (mm) | 40-11/16 | |

SPECIFICATIONS: PLA-A24EA7 & PUZ-A24NHA7(-BS)

| Model Number | Indoor Unit | | PLA-A24EA7 |
|--|---|-----------|-----------------------------|
| | Outdoor Unit | | PUZ-A24NHA7 |
| | | | PUZ-A24NHA7-BS |
| | Unit Weight | Lbs. (kg) | 153 (69) |
| | Package Weight | Lbs. (kg) | 179 (81) |
| Outdoor Unit Operating Temperature Range | Cooling Intake Air Temp (Maximum / Minimum) | °F | 115 DB / 0* DB |
| | Heating Intake Air Temp (Maximum / Minimum) | °F | 70 DB, 59 WB / -4 DB, -4 WB |
| | Thermal Lock-out / Re-start Temperatures** | °F | -8 / -4 DB |
| Refrigerant | Type | | R410A |
| | Charge | Lbs, oz | 7 lbs, 11 oz |
| Piping | Gas Pipe Size O.D. (Flared) | In.(mm) | 5/8 (15.88) |
| | Liquid Pipe Size O.D. (Flared) | In.(mm) | 3/8 (9.52) |
| | Maximum Piping Length | Ft. (m) | 165 (50) |
| | Maximum Height Difference | Ft. (m) | 100 (30) |
| | Maximum Number of Bends | | 15 |

Notes

| | | | |
|---|--|----|------------------------------|
| AHRI Rated Conditions (Rated data is determined at a fixed compressor speed) | ¹ Cooling (Indoor // Outdoor) | °F | 80 DB, 67 WB // 95 DB, 75 WB |
| | ² Heating at 47°F (Indoor // Outdoor) | °F | 70 DB, 60 WB // 47 DB, 43 WB |
| | ³ Heating at 17°F (Indoor // Outdoor) | °F | 70 DB, 60 WB // 17 DB, 15 WB |
| Conditions | ⁴ Heating at 5°F (Indoor // Outdoor) | °F | 70 DB, 60 WB // -4 DB, -5 WB |

*Wind baffles required to operate below 23°F DB in cooling mode. PUZ with wind baffle: 0°F - 115°F.

**System cuts out in heating mode to avoid thermistor error and automatically restarts at these temperatures.

SEACOAST PROTECTION

- External Outer Panel: Phosphate coating + Acrylic-Enamel coating
- Fan Motor Support: Epoxy resin coating (at edge face)
- Separator Assembly; Valve Bed: Epoxy resin coating (at edge face)
- "Blue Fin" treatment is an anti-corrosion treatment that is applied to the condenser coil to protect it against airborne contaminants.

ACCESSORIES: PLA-A24EA7

| | |
|---|-------------------------|
| High-efficiency Filter Element | □ PAC-SH59KF-E |
| Signal Receiver | □ PAR-SA9CA-E |
| Wireless Remote Controller | □ PAR-FL32MA-E |
| Wireless Remote Receiver | □ PAR-FA32MA-E |
| Wireless Remote Controller | □ PAR-SR3LA-E |
| Backlit, Wall-mounted, Wireless Controller | □ MHK1 |
| Portable Central Controller | □ MCCH1 |
| Wired MA Controller | □ PAR-33MAA |
| Simple MA Controller | □ PAC-YT53CRAU |
| Touch MA Controller | □ PAR-CT01MAU-SB |
| Wired Remote Sensor | □ PAC-SE41TS-E |
| Lockdown Bracket for Wireless, Hand-held, Remote Controller | □ RCMKP1CB |
| Wireless Temperature and Humidity Sensor | □ PAC-USWHS003-TH-1 |
| Outside Air Sensor for MHK1 | □ MOS1 |
| Flush Mount Remote Temperature Sensor | □ PAC-USSEN001-FM-1 |
| Wireless Interface | □ PAC-USWHS002-WF-1 |
| Thermostat Interface | □ PAC-US444CN-1 |
| kumo station® | □ PAC-WHS01HC-E |
| USNAP Interface | □ PAC-WHS01UP-E |
| IT Extender | □ PAC-WHS01IE-E |
| BACnet® and Modbus Interface | □ PAC-UKPRC001-CN-1 |
| External Fan / Heater Control Relay Adapter | □ CN24RELAY-KIT-CM3 |
| Connector for CN32 (remote on/off) | □ PAC-SE55RA-E |
| Remote Operation Adapter (with wire terminals for remote ON/OFF and operation status/ error) ¹ | □ PAC-SF40RM-E |
| Grille (required) | □ PLP-40EAEU |
| Multi-Function Casement | □ PAC-SJ41TM-E |
| Installation/Trim Panels | □ PLFY-ITP1 |
| Space Panel | □ PAC-SJ38AS-E |
| Air Outlet Shutter Plate | □ PAC-SJ37SP-E |
| Blue Diamond Sensor Extension Cable—15 Ft. | □ C13-103 |
| MegaBlue Advanced Blue Diamond Condensate Pump w/ Reservoir & Sensor | □ X87-835 - 110 to 250V |
| MaxiBlue Advanced Blue Diamond Mini Condensate Pump w/ Reservoir & Sensor (208/230V) up to 48,000 Btu/h [recommended] | □ X87-721 - 208/230V |
| Drain Pan Level Sensor (Control for indoor unit shut off to prevent drain pan overflow) | □ DPLS2 |
| 3 Pole Disconnect Switch (30A/600VUL) [fits 2"X4" utility] - Black | □ TAZ-MS303 |
| 3 Pole Disconnect Switch (30A/600VUL) [fits 2"X4" utility] - White | □ TAZ-MS303W |

¹ Unable to use with wireless remote controller

ACCESSORIES: PUZ-A24NHA7(-BS)

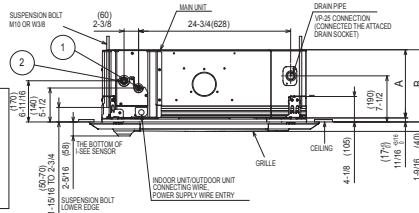
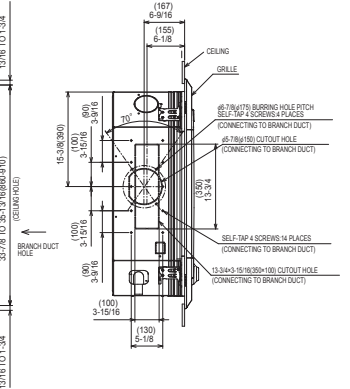
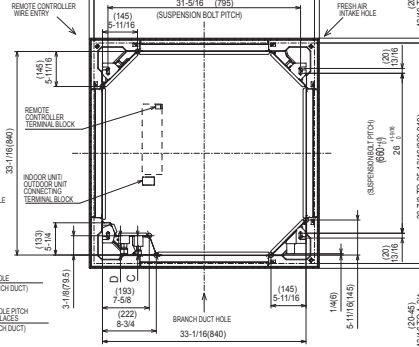
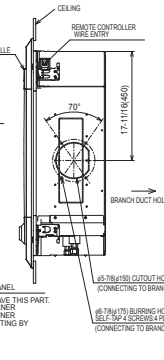
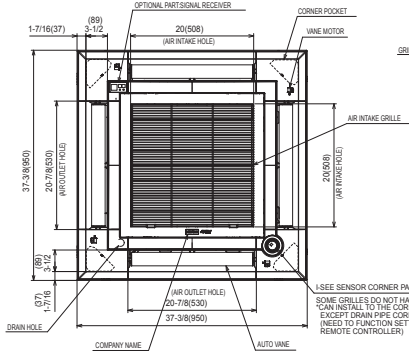
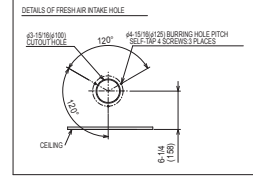
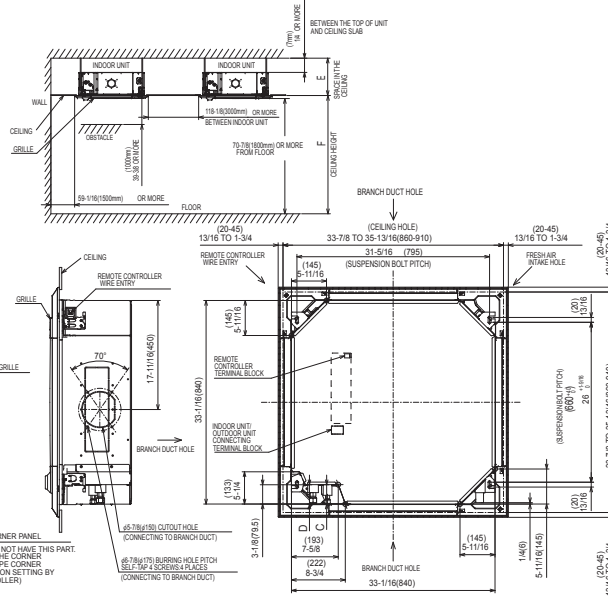
| | |
|---|-------------------|
| Twining Distribution Pipe (50:50) | □ MSDD-50TR-E |
| Air Outlet Guide | □ PAC-SG59SG-E |
| Front Wind Baffle | □ WB-PA5 |
| Drain Socket | □ PAC-SG61DS-E |
| Centralized Drain Pan | □ PAC-SG64DP-E |
| M-NET Converter | □ PAC-SF83MA-E |
| M-NET Converter | □ PAC-SJ95MA-E |
| Control/Service Tool | □ PAC-SK52ST |
| Hail Guard | □ HG-A6 |
| Condensing Unit Mounting Pad 24" x 42" x 3" | □ ULTRILITE2 |
| Outdoor Unit Stand—12" High | □ QSMS1201M |
| Outdoor Unit Stand—18" High | □ QSMS1801M |
| Outdoor Unit Stand—24" High | □ QSMS2401M |
| Heavy Duty Wall Mounting Bracket for Outdoor Units—Coated Steel | □ QSWB2000M-1 |
| Heavy Duty Wall Mounting Bracket for Outdoor Units—316 Series Stainless Steel | □ QSWBSS |
| 3/8" x 5/8" x 10' / 1/2" Lineset (Twin-Tube Insulation) | □ MPLS385812T-10 |
| 3/8" x 5/8" x 15' / 1/2" Lineset (Twin-Tube Insulation) | □ MPLS385812T-15 |
| 3/8" x 5/8" x 30' / 1/2" Lineset (Twin-Tube Insulation) | □ MPLS385812T-30 |
| 3/8" x 5/8" x 50' / 1/2" Lineset (Twin-Tube Insulation) | □ MPLS385812T-50 |
| 3/8" x 5/8" x 65' / 1/2" Lineset (Twin-Tube Insulation) | □ MPLS385812T-65 |
| 3/8" x 5/8" x 100' / 1/2" Lineset (Twin-Tube Insulation) | □ MPLS385812T-100 |

DIMENSIONS: PLA-A24EA7 & PUZ-A24NHA7 (-BS)

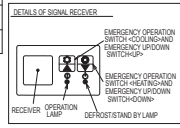
PLA-A24EA7

Unit: inch (mm)

- NOTE1 CHOOSE THE GRILLE AMONG THE DEDICATED GRILLES.
 2 REINFORCE THE SUSPENSION BOLT FOR EARTHQUAKE-RESISTANCE AS NEEDED.
 3 FOR THE SUSPENSION BOLT USE M10 OR W8.
 4 FOR DRAIN PIPE USE RP-25(D: 25.4x1.14/1.32) PVC TUBE.
 5 ELECTRICAL BOX MAY BE REMOVED FOR THE SERVICE PURPOSE.
 6 WHEN INSTALLING THE BRANCH DUCTS, BE SURE TO INSULATE ADEQUATELY OTHERWISE CONDENSATION AND DRIPPING MAY OCCUR.
 7 REQUIRES 3" (76.2mm) OR MORE SPACE BETWEEN TRANSOM AND CEILING FOR THE INSTALLATION.
 8 WHEN INSTALLING THE BRANCH DUCTS, BE SURE TO INSULATE ADEQUATELY OTHERWISE CONDENSATION AND DRIPPING MAY OCCUR.
 9 AS FOR NECESSARY INSTALLATION SERVICE SPACE, PLEASE REFER TO THE RIGHT FIGURE.
 10 FOR THE INSTALLATION OF THE OPTIONAL HIGH EFFICIENCY FILTER OR MULTI-FUNCTIONAL CASEMENT REFER TO SPECIAL DRAWING.

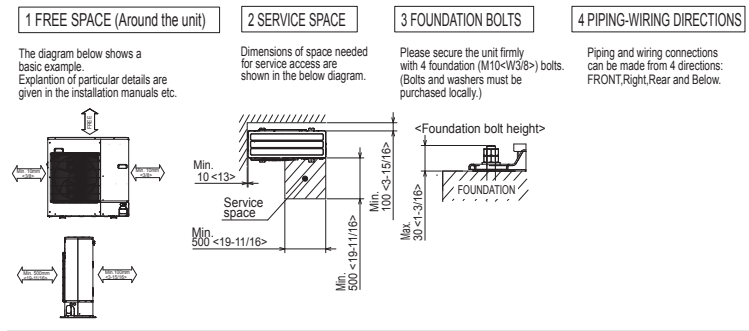


| MODELS | (1) | (2) | A | B | C | D | E | F |
|---------------|---|---|---------------|---------------|------------|-----------------------|----------------|---|
| PLA-A1218EA7 | REFRIGERANT PIPE 1/2 FLARED CONNECTION 1/4" | REFRIGERANT PIPE 1/2 FLARED CONNECTION 1/2" | 9-1/2 (241) | 10-3/16 (258) | 3/16 (7.6) | 15-7/16 (399) OR MORE | 17-11/16 (450) | |
| PLA-A24-42EA7 | REFRIGERANT PIPE 1/2 FLARED CONNECTION 1/4" | REFRIGERANT PIPE 1/2 FLARED CONNECTION 1/2" | 11-1/16 (281) | 13-3/4 (348) | 3/8 (9.5) | 15/16 (38.1) OR MORE | 17-3/16 (430) | |

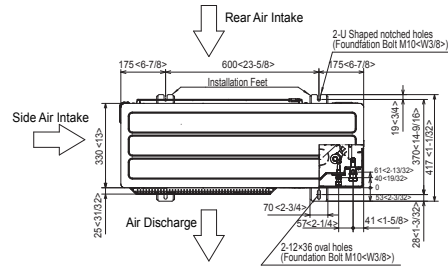


DIMENSIONS: PLA-A24EA7 & PUZ-A24NHA7 (-BS)

PUZ-A24NHA7(-BS)

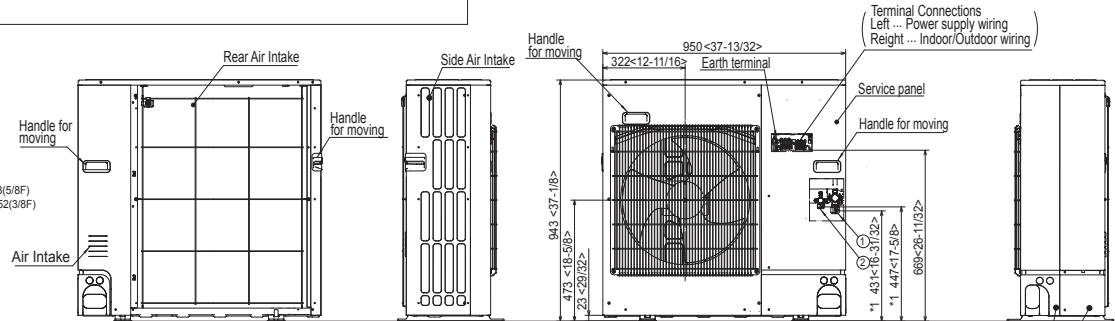


Unit: mm<in>

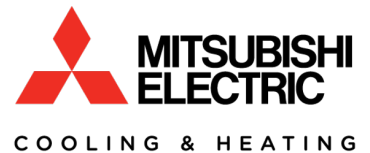
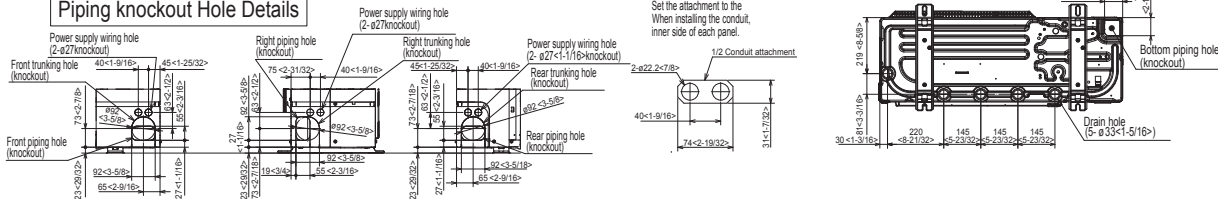


Example of Notes

- ① ... Refrigerant GAS pipe connection (FLARE) ϕ 15.88(5/8F)
- ② ... Refrigerant LIQUID pipe connection (FLARE) ϕ 9.52(3/8F)
- *1... Indication of STOP VALVE connection location.



Piping knockout Hole Details



1340 Satellite Boulevard, Suwanee, GA 30024
Toll Free: 800-433-4822 www.mehvac.com

