

Job Name:	
System Reference:	Date:

SPECIFICATIONS:

Rated Capacity*		
Cooling	Btu/h	24,000
Heating at 47° F	Btu/h	26,000

*Rating Conditions per AHRI Standard:

Cooling | Indoor: 80° F (27° C) DB / 67° F (19° C) WB

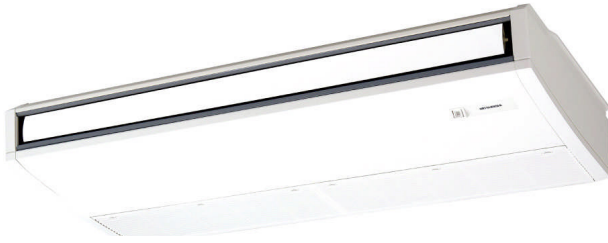
Cooling | Outdoor: 95° F (35° C) DB / 75° F (24° C) WB

Heating at 47°F | Indoor: 70° F (21° C) DB / 60° F (16° C) WB

Heating at 47°F | Outdoor: 47° F (8° C) DB / 43° F (6° C) WB

For data on specific indoor units (all ducted, all non-ducted, and both ducted and non-ducted) combinations, see the MXZ Technical and Service Manual.

Electrical Power Requirements		208 / 230V, 1-Phase, 60 Hz	
Minimum Circuit Ampacity (MCA)		A	1
Blower Motor (ECM)		F.L.A.	0.54
Blower Motor Output		W	95
Airflow Rate (Low-M1-M2-Hi)	DRY	CFM	530-565-600-670
	WET		495-530-565-635
Sound Pressure Level (Low-M1-M2-Hi)		dB(A)	33-35-37-40
External Dimensions (H x W x D)		In.(mm)	9-1/16 x 50-3/8 x 26-3/4 (230 x 1,280 x 680)
Net Weight		Lbs.(kg)	71 (32)
External Finish		Munsel No. 6.4Y 8.9/0.4	
Refrigerant		R410A	
Refrigerant Piping (Flared)			
Liquid (High Pressure)		In.(mm)	3/8 (9.52)
Gas (Low Pressure)			5/8 (15.88)



Indoor Unit: PCA-A24KA6

ACCESSORIES:**Indoor Unit**

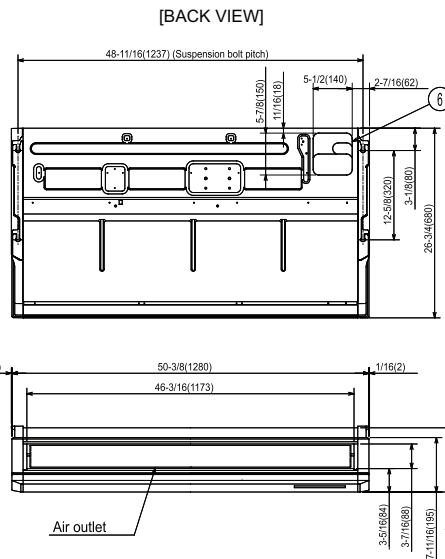
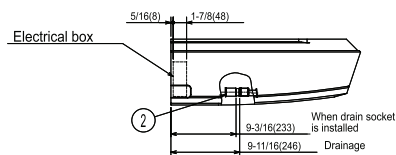
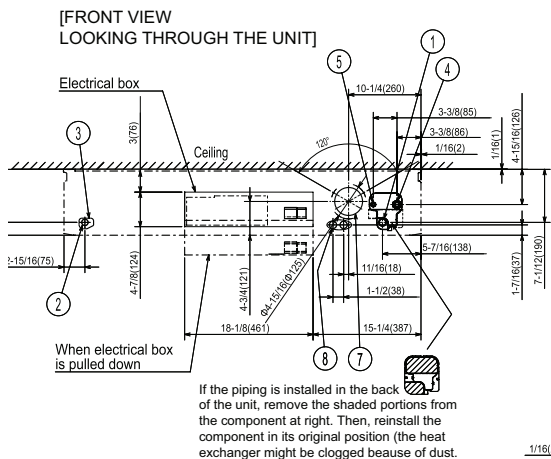
- ☐ Condensate Pump (BlueDiamond X87-711/721; 115/230V)
- ☐ Condensate Pump (Saueremann SI30-115/230; 115/230V)
- ☐ High-Efficiency Filter (PAC-SH89KF-E)
- ☐ iSee Sensor (PAC-SH91MK-E)
- ☐ Disconnect Switch (TAZ-MS303)

Controls

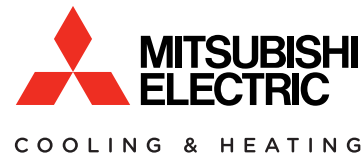
- ☐ Wireless Controller (MHK1)
- ☐ Advanced Wired Controller (PAR-31MAA)
- ☐ Simple Wired Controller (PAC-YT53CRAU)
- ☐ M-NET Adapter (PAC-SF83MA-E)
- ☐ Temperature Sensor (PAC-SE41TS)

DIMENSION: PCA-A24KA6

Unit: inch (mm)



- ① Drainage pipe connection(1" [26mm] I.D.)
 - ② Drainage pipe connection(for the left arrangement)
 - ③ Knockout hole for left drain-piping arrangement
 - ④ Refrigerant-pipe connection(gas pipe side/flared connection)
 - ⑤ Refrigerant-pipe connection(liquid pipe side/flared connection)
 - ⑥ Knockout hole for upper drain pipe arrangement
 - ⑦ Knockout hole for ventilation air intake $\Phi 3-15/16(\Phi 100)$
 - ⑧ Knockout hole for wiring arrangement $\Phi 7/8(\Phi 22)$
- Accessory...Drain socket (1" [26mm] I.D.)



1340 Satellite Boulevard, Suwanee, GA 30024
Toll Free: 800-433-4822 www.mehvac.com

