

Job Name:

System Reference:

Date:

Indoor Unit:
PLA-A12EA7

Outdoor Unit:
 PUY-A12NKA7
 PUY-A12NKA7-BS



INDOOR UNIT FEATURES

- Space-efficient ductless installation
- Equipped with 3D i-see Sensor™ for enhanced comfort and energy efficiency
- Airflow settings for high and low ceiling applications
- Individual vane settings for direct/indirect airflow control or variable airflow patterns
- Knockouts for outside-air intake and branch-duct run
- Filter indicator signal
- Easy-to-clean, washable filter (optional high-efficiency filter available - requires multi-function casement)
- Built-in condensate lift mechanism
- Ideal for retail shops, classrooms, office spaces, conference centers, building lobbies, and more

OUTDOOR UNIT FEATURES

- Variable speed INVERTER-driven compressor
- Power receiver pre-charged with refrigerant volume for piping length up to 100 ft (70 ft. for A12/18/24/30)
- Low ambient cooling down to -40°F providing 100% capacity (only for PUY models with wind baffles installed)
- 24-hour continuous operation (cooling mode)
- High pressure protection
- Fast restarts in cooling mode (15 seconds for 12/18/36/42; 50 seconds for 24/30)
- Superior energy and operational efficiency

SPECIFICATIONS: PLA-A12EA7 & PUY-A12NKA7(-BS)

Model Number	Indoor Unit		PLA-A12EA7	
	Outdoor Unit		PUY-A12NKA7	
			PUY-A12NKA7-BS	
Cooling ¹	Maximum Capacity	Btu/h	12,000	
	Rated Capacity	Btu/h	12,000	
	Minimum Capacity	Btu/h	5,800	
	Maximum Power Input	W	730	
	Rated Power Input	W	730	
	Moisture Removal	Pints/h	1.2	
	Sensible Heat Factor		0.89	
	Power Factor	%	93.5	
Efficiency	SEER		27.0	
	EER ¹		16.4	
	ENERGY STAR® Certified (ENERGY STAR products are third-party certified by an EPA-recognized Certification Body)		Yes	
Electrical	Voltage, Phase, Frequency		208 / 230V, 1-phase, 60 Hz	
	Guaranteed Voltage Range	V AC	198 – 253	
	Voltage: Indoor - Outdoor, S1-S2	V AC	208 / 230	
	Voltage: Indoor - Outdoor, S2-S3	V DC	24	
	Voltage: Indoor - Remote controller	V DC	12	
	Recommended Fuse/Breaker Size	A	15	
	Recommended Wire Size (Indoor - Outdoor)	AWG	14	
Indoor Unit	MCA	A	1.00	
	Fan Motor Full Load Amperage	A	0.36	
	Fan Motor Output	W	50	
	Airflow Rate, Dry	CFM	420-460-490-530	
	Airflow Rate, Wet	CFM	380-420-450-490	
	External Static Pressure	in.WG	n/a	
	Sound Pressure Level	dB(A)	27-28-29-30	
	Drain Pipe Size	In. (mm)	1-1/4 (32)	
	Condensate Lift Mechanism, Max. Distance	In.	33-7/16	
	Heat Exchanger Type		Plate fin coil	
	External Finish Color		White Munsell 6.4Y 8.9/0.4	
	Unit Dimensions // Grille Dimensions	W: In. (mm)	33-1/16 (840) // 37-13/32 (950)	
		D: In. (mm)	33-1/16 (840) // 37-13/32 (950)	
		H: In. (mm)	10-5/32 (258) // 1-9/16 (40)	
	Package Dimensions // Grille Dimensions	W: In. (mm)	35-9/16 // 39-6/16	
		D: In. (mm)	34-5/16 // 38-3/16	
		H: In. (mm)	15 // 4-12/16	
Unit Weight // Grille Weight	Lbs. (kg)	46 (21) // 11 (5)		
Package Weight	Lbs. (kg)	68 (31)		

SPECIFICATIONS: PLA-A12EA7 & PUY-A12NKA7(-BS)

Model Number	Indoor Unit		PLA-A12EA7	
	Outdoor Unit		PUY-A12NKA7	
			PUY-A12NKA7-BS	
Indoor Unit Operating Temperature Range	Cooling Intake Air Temp (Maximum / Minimum)	°F	90 DB, 73 WB / 66 DB, 59 WB	
Outdoor Unit	MCA	A	11	
	MOCP	A	28	
	Fan Motor Full Load Amperage	A	0.50	
	Fan Motor Output	W	46	
	Airflow Rate	CFM	1,590	
	Refrigerant Control		Electronic Expansion Valve	
	Heat Exchanger Type		Cross fin	
	Sound Pressure Level, Cooling ¹	dB(A)	44	
	Compressor Type		INVERTER-driven twin rotary	
	Compressor Model		SNB092FNCM	
	Compressor Rated Load Amps	A	7	
	Compressor Locked Rotor Amps	A	12	
	Compressor Oil Type // Charge	oz.	FV50S // 12	
	External Finish Color		Ivory Munsell 3Y 7.8/1.1	
	Base Pan Heater		n/a	
	Unit Dimensions	W: In. (mm)	31-13/16 + 7/16 (809+62)	
		D: In. (mm)	11-3/16 (300)	
		H: In. (mm)	24-13/16 (630)	
	Package Dimensions	W: In. (mm)	37-1/16	
		D: In. (mm)	16-3/16	
H: In. (mm)		27-7/16		
Unit Weight	Lbs. (kg)	92 (41)		
Package Weight	Lbs. (kg)	104 (47)		
Outdoor Unit Operating Temperature Range	Cooling Intake Air Temp (Maximum / Minimum)	°F	115 DB / -40* DB	
Refrigerant	Type		R410A	
	Charge	Lbs, oz	4 lbs, 7 oz	
Piping	Gas Pipe Size O.D. (Flared)	In.(mm)	1/2 (12.7)	
	Liquid Pipe Size O.D. (Flared)	In.(mm)	1/4 (6.35)	
	Maximum Piping Length	Ft. (m)	165 (50)	
	Maximum Height Difference	Ft. (m)	100 (30)	
	Maximum Number of Bends	15		

SPECIFICATIONS: PLA-A12EA7 & PUY-A12NKA7(-BS)

Notes

AHRI Rated Conditions (Rated data is determined at a fixed compressor speed)	¹ Cooling (Indoor // Outdoor)	°F	80 DB, 67 WB // 95 DB, 75 WB
<p>*Wind baffles required to operate below 23F DB in cooling mode. For PUY models, wind baffles can be utilized to extend the cooling operation range to -40F. Please refer to the wind baffle submittals to determine which baffles are required to meet the desired operation range.</p> <p>**System cuts out in heating mode to avoid thermistor error and automatically restarts at these temperatures.</p>			
<p>SEACOAST PROTECTION</p> <ul style="list-style-type: none">• External Outer Panel: Phosphate coating + Acrylic-Enamel coating• Fan Motor Support: Epoxy resin coating (at edge face)• Separator Assembly; Valve Bed: Epoxy resin coating (at edge face)• "Blue Fin" treatment is an anti-corrosion treatment that is applied to the condenser coil to protect it against airborne contaminants.			

ACCESSORIES: PLA-A12EA7

High-efficiency Filter Element	□ PAC-SH59KF-E
Wireless Remote Controller	□ PAR-FL32MA-E
Wireless Remote Receiver	□ PAR-FA32MA-E
Signal Receiver	□ PAR-SR3LA-E
Backlit, Wall-mounted, Wireless Controller	□ MHK1
Portable Central Controller	□ MCCH1
Wired MA Controller	□ PAR-33MAA
Simple MA Controller	□ PAC-YT53CRAU
Touch MA Controller	□ PAR-CT01MAU-SB
Wired Remote Sensor	□ PAC-SE41TS-E
Lockdown Bracket for Wireless, Hand-held, Remote Controller	□ RCMKP1CB
Wireless Temperature and Humidity Sensor	□ PAC-USWHS003-TH-1
Outside Air Sensor for MHK1	□ MOS1
Flush Mount Remote Temperature Sensor	□ PAC-USSEN001-FM-1
Wireless Interface	□ PAC-USWHS002-WF-1
Thermostat Interface	□ PAC-US444CN-1
kumo station®	□ PAC-WHS01HC-E
USNAP Interface	□ PAC-WHS01UP-E
IT Extender	□ PAC-WHS01IE-E
BACnet® and MODBUS® Interface	□ PAC-UKPRC001-CN-1
External Fan / Heater Control Relay Adapter	□ CN24RELAY-KIT-CM3
Connector for CN32 (remote on/off)	□ PAC-SE55RA-E
Remote Operation Adapter (with wire terminals for remote ON/OFF and operation status/ error) ¹	□ PAC-SF40RM-E
Grille (required)	□ PLP-40EAEU
Multi-Function Casement	□ PAC-SJ41TM-E
Installation/Trim Panels	□ PLFY-ITP1
Space Panel	□ PAC-SJ38AS-E
Air Outlet Shutter Plate	□ PAC-SJ37SP-E
Blue Diamond Sensor Extension Cable—15 Ft.	□ C13-103
MegaBlue Advanced Blue Diamond Condensate Pump w/ Reservoir & Sensor	□ X87-835 - 110 to 250V
MaxiBlue Advanced Blue Diamond Mini Condensate Pump w/ Reservoir & Sensor (208/230V) up to 48,000 Btu/h [recommended]	□ X87-721 - 208/230V
Drain Pan Level Sensor (Control for indoor unit shut off to prevent drain pan overflow)	□ DPLS2
3 Pole Disconnect Switch (30A/600VUL) [fits 2"X4" utility] - Black	□ TAZ-MS303
3 Pole Disconnect Switch (30A/600VUL) [fits 2"X4" utility] - White	□ TAZ-MS303W

¹ Unable to use with wireless remote controller

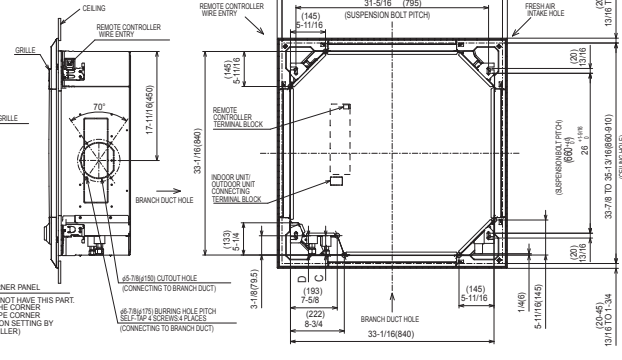
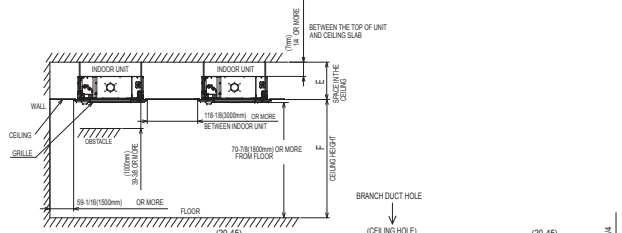
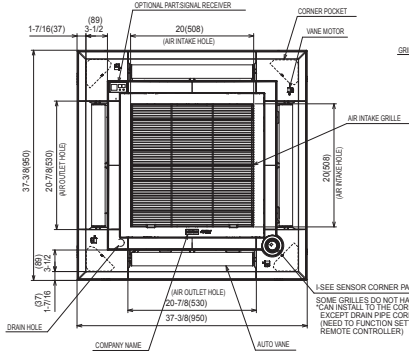
ACCESSORIES: PUY-A12NKA7(-BS)

Air Outlet Guide	<input type="checkbox"/> PAC-SJ07SG-E
Front Wind Baffle	<input type="checkbox"/> WB-PA4
Side Advanced Wind Baffle	<input type="checkbox"/> WB-SD4
Rear Advanced Wind Baffle	<input type="checkbox"/> WB-RE4
Drain Socket	<input type="checkbox"/> PAC-SJ08DS-E
Centralized Drain Pan	<input type="checkbox"/> PAC-SG63DP-E
M-NET Converter	<input type="checkbox"/> PAC-SJ19MA-E
M-NET Converter	<input type="checkbox"/> PAC-SJ96MA-E
Control/Service Tool	<input type="checkbox"/> PAC-SK52ST
Hail Guard	<input type="checkbox"/> HG-A5
Condensing Unit Mounting Pad 16" x 36" x 3"	<input type="checkbox"/> ULTRILITE1
Outdoor Unit Stand—12" High	<input type="checkbox"/> QSMS1201M
Outdoor Unit Stand—18" High	<input type="checkbox"/> QSMS1801M
Outdoor Unit Stand—24" High	<input type="checkbox"/> QSMS2401M
Heavy Duty Wall Mounting Bracket for Outdoor Units—Coated Steel	<input type="checkbox"/> QSWB2000M-1
Heavy Duty Wall Mounting Bracket for Outdoor Units—316 Series Stainless Steel	<input type="checkbox"/> QSWBSS
1/4" x 1/2" x 15' / 1/2" Lineset (Twin-Tube Insulation)	<input type="checkbox"/> MLS141212T-15
1/4" x 1/2" x 30' / 1/2" Lineset (Twin-Tube Insulation)	<input type="checkbox"/> MLS141212T-30
1/4" x 1/2" x 50' / 1/2" Lineset (Twin-Tube Insulation)	<input type="checkbox"/> MLS141212T-50
1/4" x 1/2" x 65' / 1/2" Lineset (Twin-Tube Insulation)	<input type="checkbox"/> MLS141212T-65
1/4" x 1/2" x 100' / 1/2" Lineset (Twin-Tube Insulation)	<input type="checkbox"/> MLS141212T-100

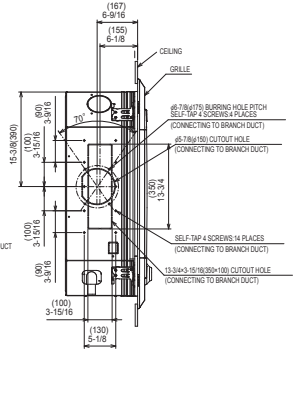
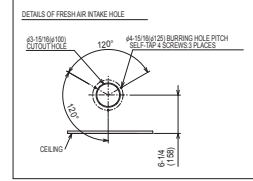
DIMENSIONS: PLA-A12EA7 & PUY-A12NKA7 (-BS)

PLA-A12EA7

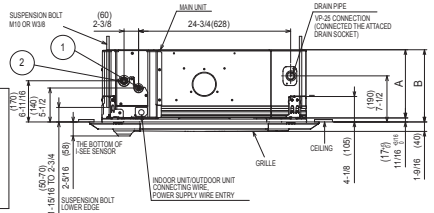
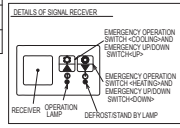
- NOTE1 CHOOSE THE GRILLE AMONG THE DEDICATED GRILLES.
 2 REINFORCE THE SUSPENSION BOLT FOR EARTHQUAKE-RESISTANCE AS NECESSARY (PROCEED AT THE LOCAL SITE).
 3 FOR THE SUSPENSION BOLT USE M10 OR W3/8.
 4 FOR DRAIN PIPE USE IP-25(D:1.114"/32) PVC TUBE.
 DRAIN PUMP INCLUSION.
 RISE IS MAX. 33.716"(860mm) FROM THE CEILING.
 5 ELECTRICAL BOX MAY BE REMOVED FOR THE SERVICE PURPOSE.
 MAKE SURE TO STRUCK THE ELECTRICAL WIRE LITTLE BIT FOR CONTROL-POWER WIRES CONNECTION.
 6 THE HEIGHT OF THE INDOOR UNIT IS ABLE TO BE ADJUSTED WITH THE GRILLE ATTACHED.
 7 REQUIRES 3" OR MORE SPACE BETWEEN TRANSOM AND CEILING FOR THE INSTALLATION.
 8 WHEN INSTALLING THE BRANCH DUCTS, BE SURE TO INSULATE ADEQUATELY OTHERWISE CONDENSATION AND DRIPPING MAY OCCUR.
 9 IT BECOMES THE CAUSE OF DROPLET OR DRIPLET (DRIPPING).
 9 AS FOR NECESSARY INSTALLATION SERVICE SPACE, PLEASE REFER TO THE RIGHT FIGURE.
 10 FOR THE INSTALLATION OF THE OPTIONAL HIGH EFFICIENCY FILTER OR MULTI-FUNCTIONAL CASEMENT REFER TO SPECIAL DRAWING.



Unit: inch (mm)



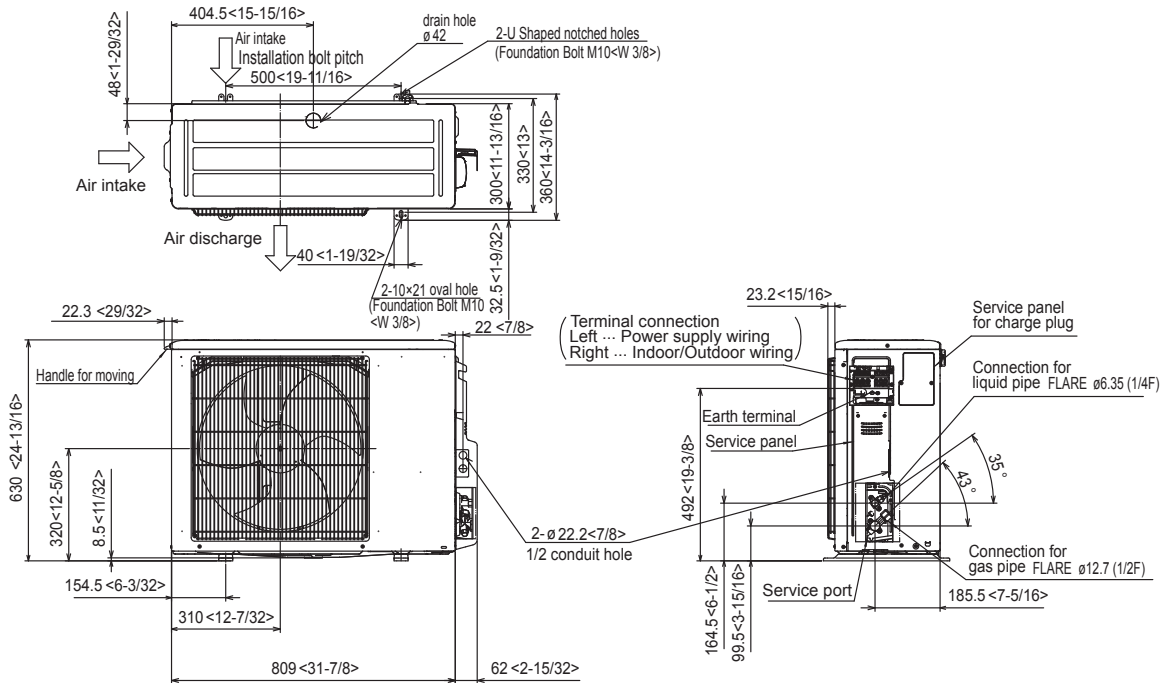
MODELS	(1)	(2)	A	B	C	D	E	F
PLA-A12-1BEA7	REFRIGERANT PIPES FLARED CONNECTION 1/4"	REFRIGERANT PIPES FLARED CONNECTION 1/2"	9-1/2 (241)	10-3/16 (258)	3/16 (7.6)	10-7/16(265) OR MORE	17-11/16(450)	17-11/16(450) OR LESS
PLA-A12-4EA7	REFRIGERANT PIPES FLARED CONNECTION 1/4"	REFRIGERANT PIPES FLARED CONNECTION 1/2"	11-1/16 (281)	11-3/4 (298)	3/8 (7.6)	10-7/16(265) OR MORE	17-11/16(450)	17-11/16(450) OR LESS



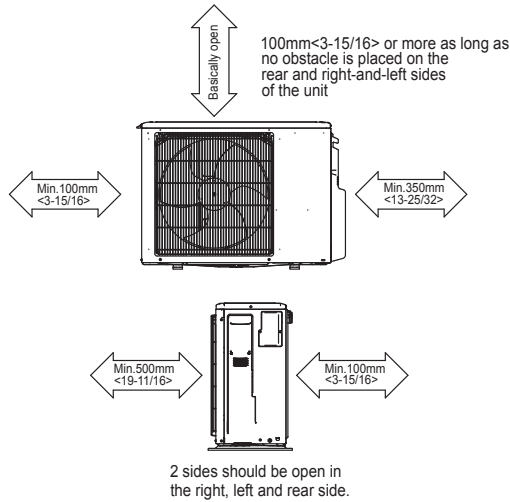
DIMENSIONS: PLA-A12EA7 & PUY-A12NKA7 (-BS)

PUY-A12NKA7(-BS)

Unit: mm<in>

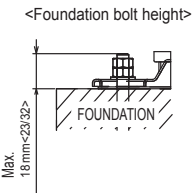


Free space around the outdoor unit (basic example)



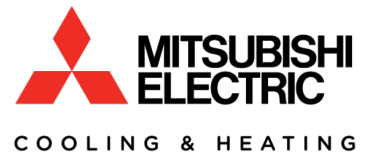
FOUNDATION BOLTS

Please secure the unit firmly with 4 foundation (M10<W3/8>) bolts. (Bolts, washers and nut must be purchased locally).



PIPING-WIRING DIRECTION

Piping and wiring connection can be made from the rear direction only.



1340 Satellite Boulevard, Suwanee, GA 30024
 Toll Free: 800-433-4822 www.mehvac.com

FORM# PLA-A12EA7 / PUY-A12NKA7(-BS) - 201810

Specifications are subject to change without notice.

© 2018 Mitsubishi Electric Trane HVAC US LLC. All rights reserved.

