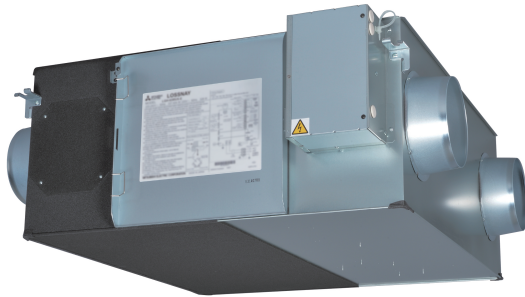


Job Name:

System Reference:

Date:



GENERAL FEATURES

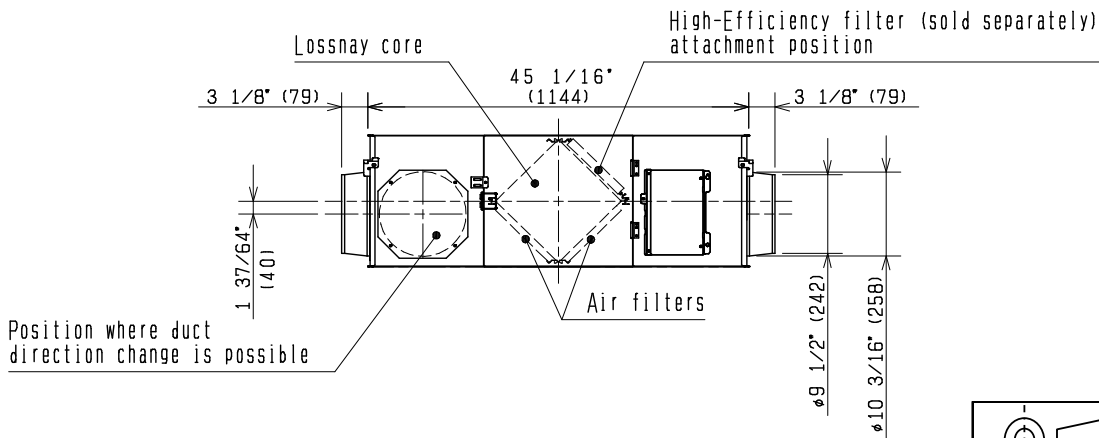
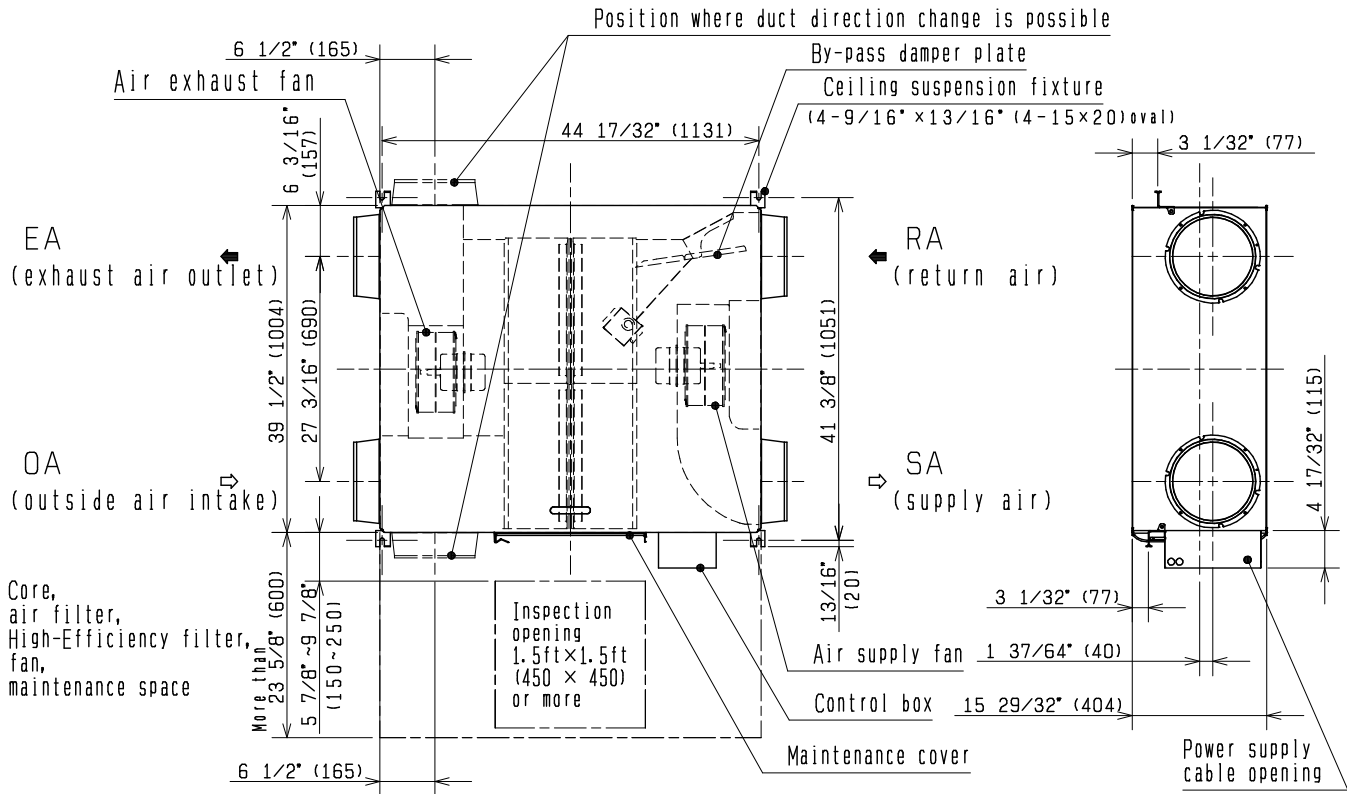
- Lossnay® cross-flow energy recovery core
- Minimal cross contamination (<1% overall) between entering and leaving air streams
- Stand-alone remote controller (PZ-61DR-E)
- M-NET Connectivity
- External input bypass damper control
- Stand alone or interlocks connects with all Mitsubishi Electric products
- Four fan speeds
- High-efficiency DC Motor
- Standard non-woven fabric filter, washable fiber
- Optional high-efficiency MERV 16 filter

SPECIFICATIONS

Capacity	CFM (m ³ /h)	470 (799)
Power Source		1-phase 208/230V 60Hz
Power Consumption	kW	0.031 - 0.348
Current	A	0.39 - 2.15
Starting Current	A	6.1
Minimum Circuit Ampacity (MCA)	A	3.1
Maximum Overcurrent Protection (MOCP)	A	15
Fan	Air Volume	CFM (m ³ /h)
	External Static Pressure	In. W.G.
Exchange Efficiency	Temperature	%
	Enthalpy Cooling	%
	Enthalpy Heating	%
External Finish		Galvanized steel sheet
External Dimensions (H x W x D)	In.	15-29/32 x 41-3/8 x 51-5/16
	mm	404 x 1,051 x 1,302
Net Weight	lbs	110
	kg	50
Energy Transfer Mechanism		Lossnay® Core
Heat Exchange Material		Partition, spacing plate-cellulose fiber membrane
Heat Exchange System		Air-to-air total heat (sensible heat + latent heat) exchange, no moving parts
Blower Type		9-5/8 In. diameter centrifugal fan
Motor Type		EC Motor
Included: Standard Filter (PZ-80RF8-E) ¹	Dimensions (H x W x L) In.	19/32 x 9-9/16 x 17-3/4
Optional: High-Efficiency MERV 16 Filter (PZ-80RFP2-E) ¹		1 x 9-5/16 x 17-9/16
Entering Air Temperature Operation Range		14° F to 104° F (-10° C to 40° C), RH 80% or less
Sound Pressure Level	dB(A)	18.0-23.0-30.0-34.5

¹ Requires one filter set (two filters included per set)

DIMENSIONS: LGH-F470RVX-E



	UNIT	SCALE
	inch(mm)	N.T.S