

Job Name:

System Reference:

Date:

Indoor Unit:
PLA-A12EA7



Outdoor Unit:
☐ PUY-A12NKA7
☐ PUY-A12NKA7-BS



INDOOR UNIT FEATURES

- Space-efficient ductless installation
- Equipped with 3D i-see Sensor™ for enhanced comfort and energy efficiency
- Airflow settings for high and low ceiling applications
- Individual vane settings for direct/indirect airflow control or variable airflow patterns
- Knockouts for outside-air intake and branch-duct run
- Filter indicator signal
- Easy-to-clean, washable filter (optional high-efficiency filter available - requires multi-function casement)
- Built-in condensate lift mechanism
- Ideal for retail shops, classrooms, office spaces, conference centers, building lobbies, and more

OUTDOOR UNIT FEATURES

- Variable speed INVERTER-driven compressor
- Suction accumulator pre-charged with refrigerant volume for piping length up to 100 ft (70 ft. for A12/18/24/30)
- Low ambient cooling down to -20°F providing 100% capacity (only for PUY models with wind baffles installed)
- 24-hour continuous operation (cooling mode)
- High pressure protection
- Fast restart due to bypass valve make it ideal for equipment cooling applications, such as data centers
- Superior energy and operational efficiency

SPECIFICATIONS: PLA-A12EA7 & PUY-A12NKA7(-BS)

Model Number	Indoor Unit		PLA-A12EA7
	Outdoor Unit		PUY-A12NKA7
			PUY-A12NKA7-BS
Cooling ¹	Maximum Capacity	Btu/h	12,000
	Rated Capacity	Btu/h	12,000
	Minimum Capacity	Btu/h	5,800
	Maximum Power Input	W	730
	Rated Power Input	W	730
	Moisture Removal	Pints/h	1.2
	Sensible Heat Factor		0.89
	Power Factor	%	93.5
Efficiency	SEER		27.0
	EER ¹		16.4
	ENERGY STAR® Certified (ENERGY STAR products are third-party certified by an EPA-recognized Certification Body)		Yes
Electrical	Voltage, Phase, Frequency		208 / 230V, 1-phase, 60 Hz
	Guaranteed Voltage Range	V AC	198 – 253
	Voltage: Indoor - Outdoor, S1-S2	V AC	208 / 230
	Voltage: Indoor - Outdoor, S2-S3	V DC	24
	Voltage: Indoor - Remote controller	V DC	12
	Recommended Fuse/Breaker Size	A	15
	Recommended Wire Size (Indoor - Outdoor)	AWG	14
Indoor Unit	MCA	A	1.00
	Fan Motor Full Load Amperage	A	0.36
	Fan Motor Output	W	50
	Airflow Rate, Dry	CFM	420-460-490-530
	Airflow Rate, Wet	CFM	380-420-450-490
	External Static Pressure	in.WG	n/a
	Sound Pressure Level	dB(A)	27-28-29-30
	Drain Pipe Size	In. (mm)	1-1/4 (32)
	Condensate Lift Mechanism, Max. Distance	In.	33-7/16
	Heat Exchanger Type		Plate fin coil
	External Finish Color		White Munsell 6.4Y 8.9/0.4
	Unit Dimensions // Grille Dimensions	W: In. (mm)	33-1/16 (840) // 37-13/32 (950)
		D: In. (mm)	33-1/16 (840) // 37-13/32 (950)
		H: In. (mm)	10-5/32 (258) // 1-9/16 (40)
	Package Dimensions // Grille Dimensions	W: In. (mm)	35-9/16 // 39-6/16
		D: In. (mm)	34-5/16 // 38-3/16
		H: In. (mm)	15 // 4-12/16
	Unit Weight // Grille Weight	Lbs. (kg)	46 (21) // 11 (5)
	Package Weight	Lbs. (kg)	68 (31)

SPECIFICATIONS: PLA-A12EA7 & PUY-A12NKA7(-BS)

Model Number	Indoor Unit		PLA-A12EA7
	Outdoor Unit		PUY-A12NKA7
			PUY-A12NKA7-BS
Indoor Unit Operating Temperature Range	Cooling Intake Air Temp (Maximum / Minimum)	°F	90 DB, 73 WB / 66 DB, 59 WB
Outdoor Unit	MCA	A	11
	MOCP	A	28
	Fan Motor Full Load Amperage	A	0.50
	Fan Motor Output	W	46
	Airflow Rate	CFM	1,590
	Refrigerant Control		Electronic Expansion Valve
	Heat Exchanger Type		Cross fin
	Sound Pressure Level, Cooling ¹	dB(A)	44
	Compressor Type		INVERTER-driven twin rotary
	Compressor Model		SNB092FNCM
	Compressor Rated Load Amps	A	7
	Compressor Locked Rotor Amps	A	12
	Compressor Oil Type // Charge	oz.	FV50S // 12
	External Finish Color		Ivory Munsell 3Y 7.8/1.1
	Base Pan Heater		n/a
	Unit Dimensions	W: In. (mm)	31-13/16 + 7/16 (809+62)
		D: In. (mm)	11-3/16 (300)
		H: In. (mm)	24-13/16 (630)
	Package Dimensions	W: In. (mm)	37-1/16
		D: In. (mm)	16-3/16
		H: In. (mm)	27-7/16
	Unit Weight	Lbs. (kg)	92 (41)
	Package Weight	Lbs. (kg)	104 (47)
Outdoor Unit Operating Temperature Range	Cooling Intake Air Temp (Maximum / Minimum)	°F	115 DB / -20* DB
Refrigerant	Type		R410A
	Charge	Lbs, oz	4 lbs, 7 oz
Piping	Gas Pipe Size O.D. (Flared)	In.(mm)	1/2 (12.7)
	Liquid Pipe Size O.D. (Flared)	In.(mm)	1/4 (6.35)
	Maximum Piping Length	Ft. (m)	165 (50)
	Maximum Height Difference	Ft. (m)	100 (30)
	Maximum Number of Bends		15

SPECIFICATIONS: PLA-A12EA7 & PUY-A12NKA7(-BS)

Notes

AHRI Rated Conditions (Rated data is determined at a fixed compressor speed)	¹ Cooling (Indoor // Outdoor)	°F	80 DB, 67 WB // 95 DB, 75 WB
*Wind baffles required to operate below 23°F DB in cooling mode. PUY with wind baffle: -20°F - 115°F. Refer to wind baffle documentation for further information. **System cuts out in heating mode to avoid thermistor error and automatically restarts at these temperatures.			
SEACOAST PROTECTION <ul style="list-style-type: none">• External Outer Panel: Phosphate coating + Acrylic-Enamel coating• Fan Motor Support: Epoxy resin coating (at edge face)• Separator Assembly; Valve Bed: Epoxy resin coating (at edge face)• “Blue Fin” treatment is an anti-corrosion treatment that is applied to the condenser coil to protect it against airborne contaminants.			

ACCESSORIES: PLA-A12EA7

High-efficiency Filter Element	□ PAC-SH59KF-E
Signal Receiver	□ PAR-SA9CA-E
Wireless Remote Controller	□ PAR-FL32MA-E
Wireless Remote Receiver	□ PAR-FA32MA-E
Wireless Remote Controller	□ PAR-SR3LA-E
Backlit, Wall-mounted, Wireless Controller	□ MHK1
Portable Central Controller	□ MCCH1
Wired MA Controller	□ PAR-33MAA
Simple MA Controller	□ PAC-YT53CRAU
Touch MA Controller	□ PAR-CT01MAU-SB
Wired Remote Sensor	□ PAC-SE41TS-E
Lockdown Bracket for Wireless, Hand-held, Remote Controller	□ RCMKP1CB
Wireless Temperature and Humidity Sensor	□ PAC-USWHS003-TH-1
Outside Air Sensor for MHK1	□ MOS1
Flush Mount Remote Temperature Sensor	□ PAC-USSEN001-FM-1
Wireless Interface	□ PAC-USWHS002-WF-1
Thermostat Interface	□ PAC-US444CN-1
kumo station®	□ PAC-WHS01HC-E
USNAP Interface	□ PAC-WHS01UP-E
IT Extender	□ PAC-WHS01IE-E
BACnet® and Modbus Interface	□ PAC-UKPRC001-CN-1
External Fan / Heater Control Relay Adapter	□ CN24RELAY-KIT-CM3
Connector for CN32 (remote on/off)	□ PAC-SE55RA-E
Remote Operation Adapter (with wire terminals for remote ON/OFF and operation status/ error) ¹	□ PAC-SF40RM-E
Grille (required)	□ PLP-40EAEU
Multi-Function Casement	□ PAC-SJ41TM-E
Installation/Trim Panels	□ PLFY-ITP1
Space Panel	□ PAC-SJ38AS-E
Air Outlet Shutter Plate	□ PAC-SJ37SP-E
Blue Diamond Sensor Extension Cable—15 Ft.	□ C13-103
MegaBlue Advanced Blue Diamond Condensate Pump w/ Reservoir & Sensor	□ X87-835 - 110 to 250V
MaxiBlue Advanced Blue Diamond Mini Condensate Pump w/ Reservoir & Sensor (208/230V) up to 48,000 Btu/h [recommended]	□ X87-721 - 208/230V
Drain Pan Level Sensor (Control for indoor unit shut off to prevent drain pan overflow)	□ DPLS2
3 Pole Disconnect Switch (30A/600VUL) [fits 2"X4" utility] - Black	□ TAZ-MS303
3 Pole Disconnect Switch (30A/600VUL) [fits 2"X4" utility] - White	□ TAZ-MS303W

¹ Unable to use with wireless remote controller

ACCESSORIES: PUY-A12NKA7(-BS)

Air Outlet Guide	□ PAC-SJ07SG-E
Front Wind Baffle	□ WB-PA4
Side Advanced Wind Baffle	□ WB-SD4
Drain Socket	□ PAC-SJ08DS-E
Centralized Drain Pan	□ PAC-SG63DP-E
M-NET Converter	□ PAC-SJ19MA-E
M-NET Converter	□ PAC-SJ96MA-E
Control/Service Tool	□ PAC-SK52ST
Hail Guard	□ HG-A5
Condensing Unit Mounting Pad 16" x 36" x 3"	□ ULTRILITE1
Outdoor Unit Stand—12" High	□ QSMS1201M
Outdoor Unit Stand—18" High	□ QSMS1801M
Outdoor Unit Stand—24" High	□ QSMS2401M
Heavy Duty Wall Mounting Bracket for Outdoor Units—Coated Steel	□ QSWB2000M-1
Heavy Duty Wall Mounting Bracket for Outdoor Units—316 Series Stainless Steel	□ QSWBSS
1/4" x 1/2" x 15' / 1/2" Lineset (Twin-Tube Insulation)	□ MLS141212T-15
1/4" x 1/2" x 30' / 1/2" Lineset (Twin-Tube Insulation)	□ MLS141212T-30
1/4" x 1/2" x 50' / 1/2" Lineset (Twin-Tube Insulation)	□ MLS141212T-50
1/4" x 1/2" x 65' / 1/2" Lineset (Twin-Tube Insulation)	□ MLS141212T-65
1/4" x 1/2" x 100' / 1/2" Lineset (Twin-Tube Insulation)	□ MLS141212T-100

PLA-A12EA7

NOTE! CHOOSE THE GRILLE AMONG THE DEDICATED GRILLES.

2.REINFORCE THE SUSPENSION BOUL FOR EARTHQUAKE-RESISTANCE AS NEEDED.

3.ROOF SUSPENSION BOUL WITH M16 OR M18 (PROCURED AT THE LOCAL SITE.)

4.FOR DRAIN PIPE, USE PV-250 (D) AND PV-325 (C) PVC TUBE.

5.DRAIN PUMP INCLUSION.

6.RAISE IS MAX 33" (8130mm) FROM THE CEILING.

7.ELECTRICAL BOX MAY BE USED FOR ELECTRICAL WIRE CONNECTION PURPOSE.

8.MAKE SURE TO SLACK THE ELECTRICAL WIRE TIGHTEN BIT FOR CONTACT POWER WIRE CONNECTION.

9.THE HEIGHT OF THE INDOOR UNIT IS ABLE TO BE ADJUSTED WITH THE GRILLE ATTACHMENT.

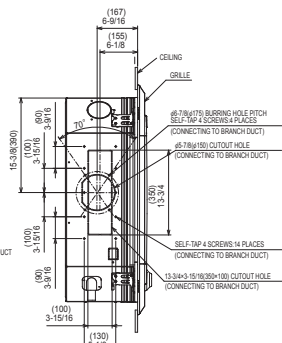
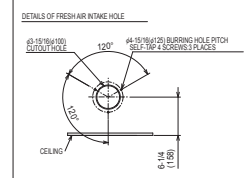
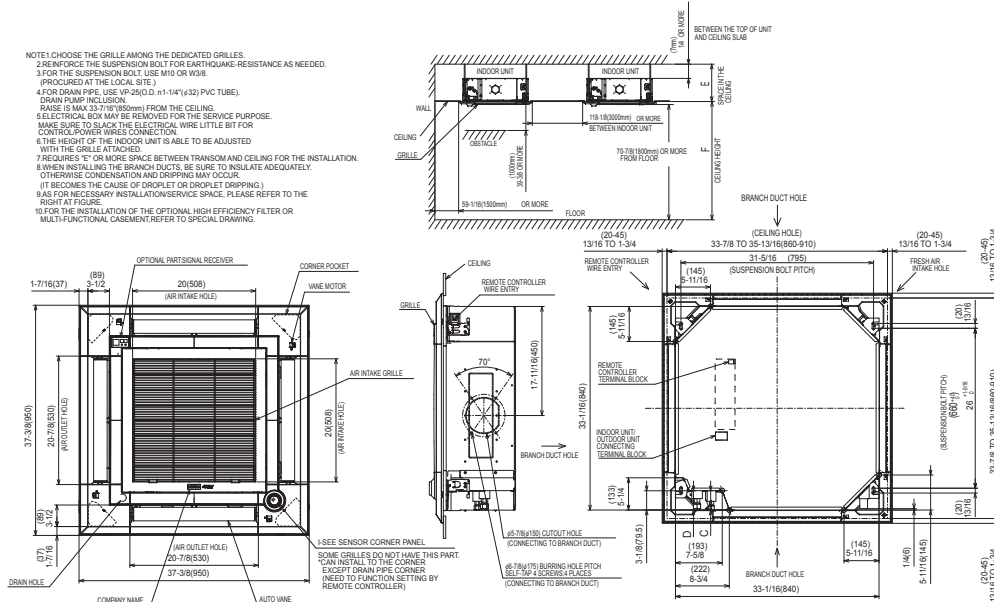
7.REQUIRES 8" OR MORE SPACE BETWEEN TRANSOM AND CEILING FOR THE INSTALLATION.

8.AFTER INSTALLING THE BRANCH DUCTS, USE SUE TO ISULATE ADEQUATELY.

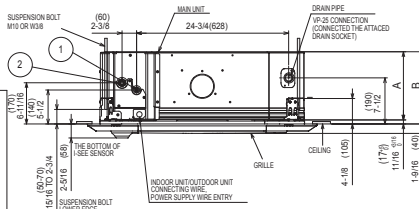
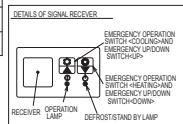
9.FOR FURTHER INFORMATION ON THE DRAIN PUMP, PLEASE SEE PAGE 10 (IT BECOMES THE CAUSE OF DROPLET OR DROPLET DRIPPING.)

10.FOR THE INFORMATION ON THE DRAIN PUMP, PLEASE REFER TO THE RIGHT ATTACHMENT.

11.FOR THE INFORMATION OF THE OPTIONAL HIGH EFFICIENCY FILTER OR M16/MULTI-FUNCTION CASEMENT REFER TO SPECIAL DRAWING.

EIA-A-EAT-1211/24/30/36/42

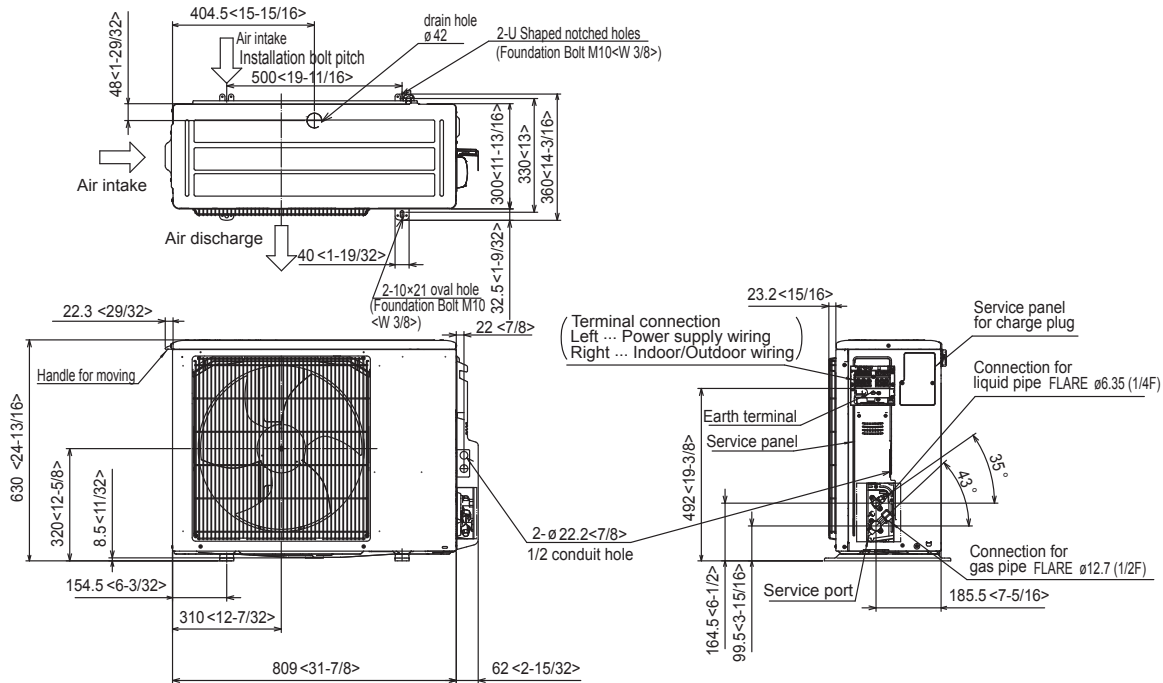
MODELS	(1)	(2)	A	B	C	D	E	F
PLA-12/18EA7	REFRIGERANT PIPE#6.35 FLARED CONNECTION 1/4"	REFRIGERANT PIPE#12.7 FLARED CONNECTION 1/2"	9-1/2 (241)	10-3/16 (258)	3/76	3/76.5	10-7/16/25 OR MORE	137-13/16/3500 OR LESS
PLA-12/42EA7	REFRIGERANT PIPE#9.52 FLARED CONNECTION 3/8"	REFRIGERANT PIPE#15.88 FLARED CONNECTION 5/8"	11-1/16 (281)	11-3/4 (298)	3-1/8 (79.5)	12/305 OR MORE	177-3/4/4500 OR LESS	



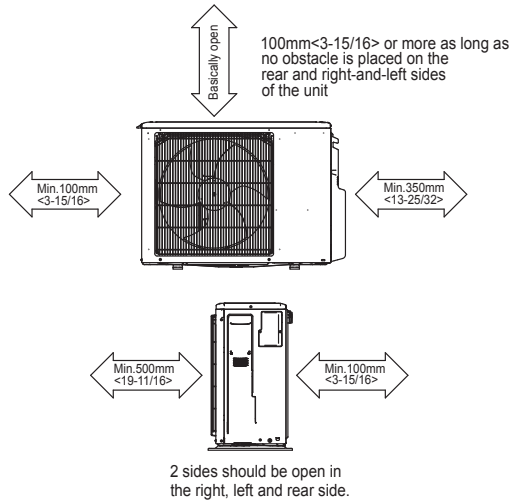
DIMENSIONS: PLA-A12EA7 & PUY-A12NKA7 (-BS)

PUY-A12NKA7(-BS)

Unit: mm<in>



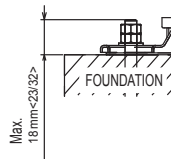
Free space around the outdoor unit (basic example)



FOUNDATION BOLTS

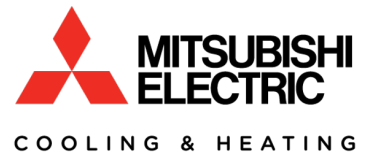
Please secure the unit firmly with 4 foundation (M10 <W3/8>) bolts. (Bolts, washers and nut must be purchased locally).

<Foundation bolt height>



PIPING-WIRING DIRECTION

Piping and wiring connection can be made from the rear direction only.



1340 Satellite Boulevard, Suwanee, GA 30024
Toll Free: 800-433-4822 www.mehvac.com

FORM# PLA-A12EA7 / PUY-A12NKA7(-BS) - 201810

Specifications are subject to change without notice.

© 2018 Mitsubishi Electric Trane HVAC US LLC. All rights reserved.

