

Job Name:

System Reference:

Date:

Indoor Unit:
PLA-A18EA7



Outdoor Unit:
☐ PUZ-A18NKA7
☐ PUZ-A18NKA7-BS



INDOOR UNIT FEATURES

- Space-efficient ductless installation
- Equipped with 3D i-see Sensor™ for enhanced comfort and energy efficiency
- Airflow settings for high and low ceiling applications
- Individual vane settings for direct/indirect airflow control or variable airflow patterns
- Knockouts for outside-air intake and branch-duct run
- Filter indicator signal
- Easy-to-clean, washable filter (optional high-efficiency filter available - requires multi-function casement)
- Built-in condensate lift mechanism
- Ideal for retail shops, classrooms, office spaces, conference centers, building lobbies, and more

OUTDOOR UNIT FEATURES

- Variable speed INVERTER-driven compressor
- Suction accumulator pre-charged with refrigerant volume for piping length up to 100 ft (70 ft. for A12/18/24/30)
- 24-hour continuous operation (cooling mode)
- High pressure protection
- Fast restart due to bypass valve make it ideal for equipment cooling applications, such as data centers
- Superior energy and operational efficiency

SPECIFICATIONS: PLA-A18EA7 & PUZ-A18NKA7(-BS)

Model Number	Indoor Unit		PLA-A18EA7
	Outdoor Unit		PUZ-A18NKA7
			PUZ-A18NKA7-BS
Cooling ¹	Maximum Capacity	Btu/h	18,000
	Rated Capacity	Btu/h	18,000
	Minimum Capacity	Btu/h	8,000
	Maximum Power Input	W	1,250
	Rated Power Input	W	1,250
	Moisture Removal	Pints/h	2.4
	Sensible Heat Factor		0.85
	Power Factor	%	95.3
Heating at 47° F ²	Maximum Capacity	Btu/h	23,000
	Rated Capacity	Btu/h	19,000
	Minimum Capacity	Btu/h	7,900
	Maximum Power Input	W	1,700
	Rated Power Input	W	1,300
	Power Factor	%	95.8
Heating at 17° F ³	Maximum Capacity	Btu/h	13,500
	Rated Capacity	Btu/h	11,000
	Maximum Power Input	W	1,390
	Rated Power Input	W	1,300
Efficiency	SEER		24.6
	EER ¹		14.4
	HSPF (IV)		11.0
	COP at 47° F ²		4.28
	COP at 17° F ³		2.47
	ENERGY STAR® Certified (ENERGY STAR products are third-party certified by an EPA-recognized Certification Body)		Yes
Electrical	Voltage, Phase, Frequency		208 / 230V, 1-phase, 60 Hz
	Guaranteed Voltage Range	V AC	198 – 253
	Voltage: Indoor - Outdoor, S1-S2	V AC	208 / 230
	Voltage: Indoor - Outdoor, S2-S3	V DC	24
	Voltage: Indoor - Remote controller	V DC	12
	Recommended Fuse/Breaker Size	A	15
	Recommended Wire Size (Indoor - Outdoor)	AWG	14
Indoor Unit	MCA	A	1.00
	MOCP	A	15
	Fan Motor Full Load Amperage	A	0.36
	Fan Motor Output	W	50
	Airflow Rate, Dry	CFM	420-460-570-600
	Airflow Rate, Wet	CFM	380-420-530-560

SPECIFICATIONS: PLA-A18EA7 & PUZ-A18NKA7(-BS)

Model Number	Indoor Unit		PLA-A18EA7
	Outdoor Unit		PUZ-A18NKA7
			PUZ-A18NKA7-BS
	External Static Pressure	in.WG	n/a
	Sound Pressure Level	dB(A)	28-29-31-32
	Drain Pipe Size	In. (mm)	1-1/4 (32)
	Condensate Lift Mechanism, Max. Distance	In.	33-7/16
	Heat Exchanger Type		Plate fin coil
	External Finish Color		White Munsell 6.4Y 8.9/0.4
	Unit Dimensions // Grille Dimensions	W: In. (mm)	33-1/16 (840) // 37-13/32 (950)
		D: In. (mm)	33-1/16 (840) // 37-13/32 (950)
		H: In. (mm)	10-5/32 (258) // 1-9/16 (40)
	Package Dimensions // Grille Dimensions	W: In. (mm)	35-9/16 // 39-6/16
		D: In. (mm)	34-5/16 // 38-3/16
		H: In. (mm)	15 // 4-12/16
	Unit Weight // Grille Weight	Lbs. (kg)	46 (21) // 11 (5)
	Package Weight	Lbs. (kg)	68 (31)
Indoor Unit Operating Temperature Range	Cooling Intake Air Temp (Maximum / Minimum)	°F	90 DB, 73 WB / 66 DB, 59 WB
	Heating Intake Air Temp (Maximum / Minimum)	°F	82 DB / 50 DB
Outdoor Unit	MCA	A	11
	MOCP	A	28
	Fan Motor Full Load Amperage	A	0.50
	Fan Motor Output	W	46
	Airflow Rate	CFM	1,590
	Refrigerant Control		Electronic Expansion Valve
	Defrost Method		Reverse Cycle
	Heat Exchanger Type		Cross fin
	Sound Pressure Level, Cooling ¹	dB(A)	44
	Sound Pressure Level, Heating ²	dB(A)	46
	Compressor Type		Inverter-driven twin rotary
	Compressor Model		SNB130FNCM2
	Compressor Rated Load Amps	A	7
	Compressor Locked Rotor Amps	A	12
	Compressor Oil Type // Charge	oz.	FV50S // 16
	External Finish Color		Ivory Munsell 3Y 7.8/1.1
	Base Pan Heater		n/a
	Unit Dimensions	W: In. (mm)	31-13/16 + 7/16 (809+62)
		D: In. (mm)	11-3/16 (300)
		H: In. (mm)	24-13/16 (630)
	Package Dimensions	W: In. (mm)	37-1/16
		D: In. (mm)	16-3/16

SPECIFICATIONS: PLA-A18EA7 & PUZ-A18NKA7(-BS)

Model Number	Indoor Unit		PLA-A18EA7
	Outdoor Unit		PUZ-A18NKA7
			PUZ-A18NKA7-BS
		H: In. (mm)	27-7/16
	Unit Weight	Lbs. (kg)	100 (45)
	Package Weight	Lbs. (kg)	112 (51)
Outdoor Unit Operating Temperature Range	Cooling Intake Air Temp (Maximum / Minimum)	°F	115 DB / 0* DB
	Heating Intake Air Temp (Maximum / Minimum)	°F	70 DB, 59 WB / 12 DB, 10 WB
	Thermal Lock-out / Re-start Temperatures**	°F	8 / 12 DB
Refrigerant	Type		R410A
	Charge	Lbs, oz	4 lbs, 14 oz
Piping	Gas Pipe Size O.D. (Flared)	In.(mm)	1/2 (12.7)
	Liquid Pipe Size O.D. (Flared)	In.(mm)	1/4 (6.35)
	Maximum Piping Length	Ft. (m)	100 (30)
	Maximum Height Difference	Ft. (m)	100 (30)
	Maximum Number of Bends		15

Notes

AHRI Rated Conditions (Rated data is determined at a fixed compressor speed)	¹ Cooling (Indoor // Outdoor)	°F	80 DB, 67 WB // 95 DB, 75 WB
	² Heating at 47°F (Indoor // Outdoor)	°F	70 DB, 60 WB // 47 DB, 43 WB
	³ Heating at 17°F (Indoor // Outdoor)	°F	70 DB, 60 WB // 17 DB, 15 WB
Conditions	⁴ Heating at 5°F (Indoor // Outdoor)	°F	70 DB, 60 WB // -4 DB, -5 WB

*Wind baffles required to operate below 23°F DB in cooling mode. PUZ with wind baffle: 0°F - 115°F.

**System cuts out in heating mode to avoid thermistor error and automatically restarts at these temperatures.

SEACOAST PROTECTION

- External Outer Panel: Phosphate coating + Acrylic-Enamel coating
- Fan Motor Support: Epoxy resin coating (at edge face)
- Separator Assembly; Valve Bed: Epoxy resin coating (at edge face)
- "Blue Fin" treatment is an anti-corrosion treatment that is applied to the condenser coil to protect it against airborne contaminants.

ACCESSORIES: PLA-A18EA7

High-efficiency Filter Element	□ PAC-SH59KF-E
Signal Receiver	□ PAR-SA9CA-E
Wireless Remote Controller	□ PAR-FL32MA-E
Wireless Remote Receiver	□ PAR-FA32MA-E
Wireless Remote Controller	□ PAR-SR3LA-E
Backlit, Wall-mounted, Wireless Controller	□ MHK1
Portable Central Controller	□ MCCH1
Wired MA Controller	□ PAR-33MAA
Simple MA Controller	□ PAC-YT53CRAU
Touch MA Controller	□ PAR-CT01MAU-SB
Wired Remote Sensor	□ PAC-SE41TS-E
Lockdown Bracket for Wireless, Hand-held, Remote Controller	□ RCMKP1CB
Wireless Temperature and Humidity Sensor	□ PAC-USWHS003-TH-1
Outside Air Sensor for MHK1	□ MOS1
Flush Mount Remote Temperature Sensor	□ PAC-USSEN001-FM-1
Wireless Interface	□ PAC-USWHS002-WF-1
Thermostat Interface	□ PAC-US444CN-1
kumo station®	□ PAC-WHS01HC-E
USNAP Interface	□ PAC-WHS01UP-E
IT Extender	□ PAC-WHS01IE-E
BACnet® and Modbus Interface	□ PAC-UKPRC001-CN-1
External Fan / Heater Control Relay Adapter	□ CN24RELAY-KIT-CM3
Connector for CN32 (remote on/off)	□ PAC-SE55RA-E
Remote Operation Adapter (with wire terminals for remote ON/OFF and operation status/ error) ¹	□ PAC-SF40RM-E
Grille (required)	□ PLP-40EAEU
Multi-Function Casement	□ PAC-SJ41TM-E
Installation/Trim Panels	□ PLFY-ITP1
Space Panel	□ PAC-SJ38AS-E
Air Outlet Shutter Plate	□ PAC-SJ37SP-E
Blue Diamond Sensor Extension Cable—15 Ft.	□ C13-103
MegaBlue Advanced Blue Diamond Condensate Pump w/ Reservoir & Sensor	□ X87-835 - 110 to 250V
MaxiBlue Advanced Blue Diamond Mini Condensate Pump w/ Reservoir & Sensor (208/230V) up to 48,000 Btu/h [recommended]	□ X87-721 - 208/230V
Drain Pan Level Sensor (Control for indoor unit shut off to prevent drain pan overflow)	□ DPLS2
3 Pole Disconnect Switch (30A/600VUL) [fits 2"X4" utility] - Black	□ TAZ-MS303
3 Pole Disconnect Switch (30A/600VUL) [fits 2"X4" utility] - White	□ TAZ-MS303W

¹ Unable to use with wireless remote controller

ACCESSORIES: PUZ-A18NKA7(-BS)

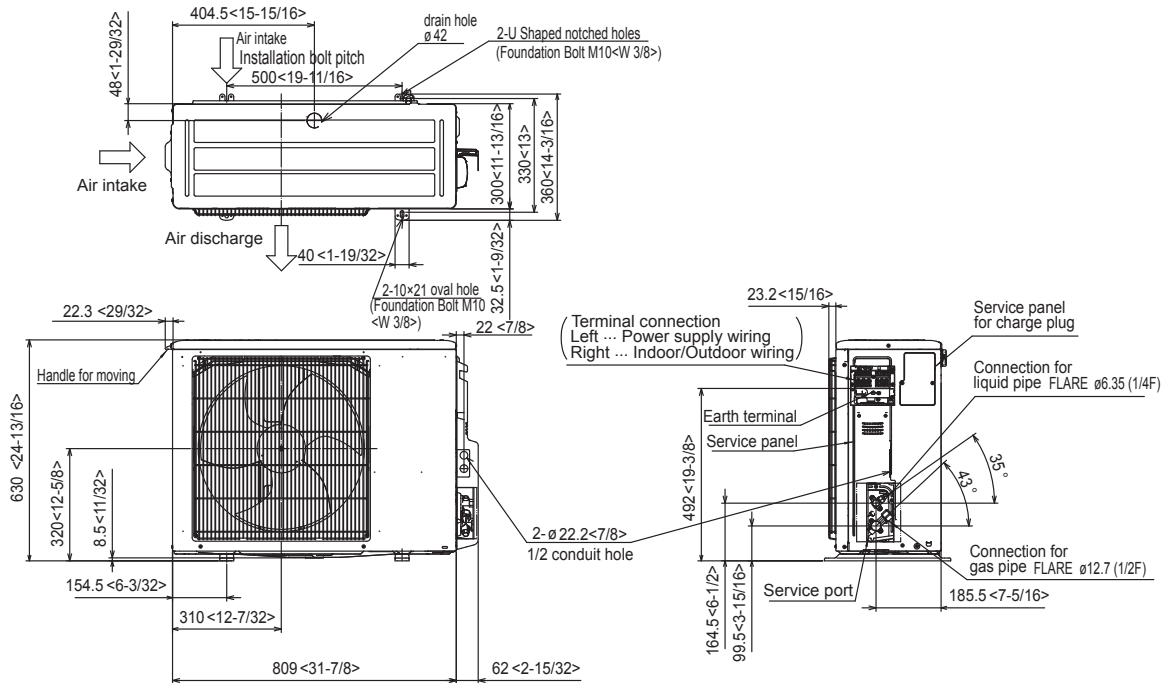
Air Outlet Guide	□ PAC-SJ07SG-E
Front Wind Baffle	□ WB-PA4
Side Advanced Wind Baffle	□ WB-SD4
Drain Socket	□ PAC-SJ08DS-E
Centralized Drain Pan	□ PAC-SG63DP-E
M-NET Converter	□ PAC-SJ19MA-E
M-NET Converter	□ PAC-SJ96MA-E
Control/Service Tool	□ PAC-SK52ST
Hail Guard	□ HG-A5
Condensing Unit Mounting Pad 16" x 36" x 3"	□ ULTRILITE1
Outdoor Unit Stand—12" High	□ QSMS1201M
Outdoor Unit Stand—18" High	□ QSMS1801M
Outdoor Unit Stand—24" High	□ QSMS2401M
Heavy Duty Wall Mounting Bracket for Outdoor Units—Coated Steel	□ QSWB2000M-1
Heavy Duty Wall Mounting Bracket for Outdoor Units—316 Series Stainless Steel	□ QSWBSS
1/4" x 1/2" x 15' / 1/2" Lineset (Twin-Tube Insulation)	□ MLS141212T-15
1/4" x 1/2" x 30' / 1/2" Lineset (Twin-Tube Insulation)	□ MLS141212T-30
1/4" x 1/2" x 50' / 1/2" Lineset (Twin-Tube Insulation)	□ MLS141212T-50
1/4" x 1/2" x 65' / 1/2" Lineset (Twin-Tube Insulation)	□ MLS141212T-65
1/4" x 1/2" x 100' / 1/2" Lineset (Twin-Tube Insulation)	□ MLS141212T-100

© 2018 Mitsubishi Electric Trane HVAC US LLC. All rights reserved.

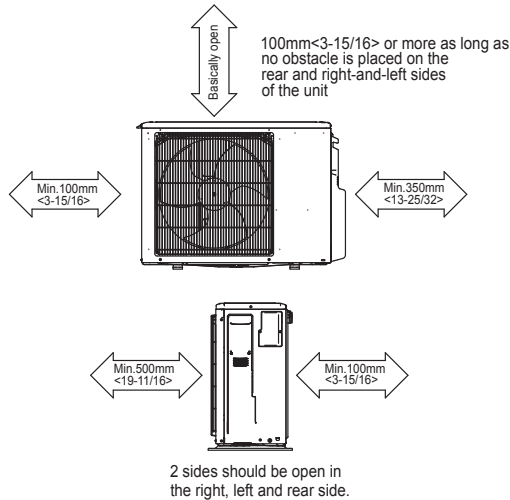
DIMENSIONS: PLA-A18EA7 & PUZ-A18NKA7 (-BS)

PUZ-A18NKA7(-BS)

Unit: mm<in>



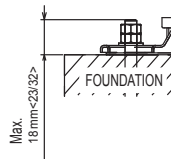
Free space around the outdoor unit (basic example)



FOUNDATION BOLTS

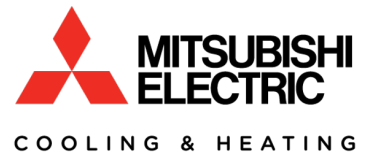
Please secure the unit firmly with 4 foundation (M10 <W3/8>) bolts. (Bolts, washers and nut must be purchased locally).

<Foundation bolt height>



PIPING-WIRING DIRECTION

Piping and wiring connection can be made from the rear direction only.



1340 Satellite Boulevard, Suwanee, GA 30024
Toll Free: 800-433-4822 www.mehvac.com

FORM# PLA-A18EA7 / PUZ-A18NKA7(-BS) - 201810

Specifications are subject to change without notice.

© 2018 Mitsubishi Electric Trane HVAC US LLC. All rights reserved.

