



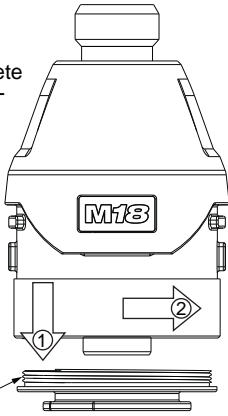
SERVICE PARTS LIST

BULLETIN NO.
54-26-2760

SPECIFY CATALOG NO. AND SERIAL NO. WHEN ORDERING PARTS		REVISED BULLETIN	DATE
M18™ Brushless 1/4" Hex Impact Driver			Feb. 2015
CATALOG NO.	2750-20	STARTING SERIAL NO.	G41A
		WIRING INSTRUCTION SEE PAGE 2	

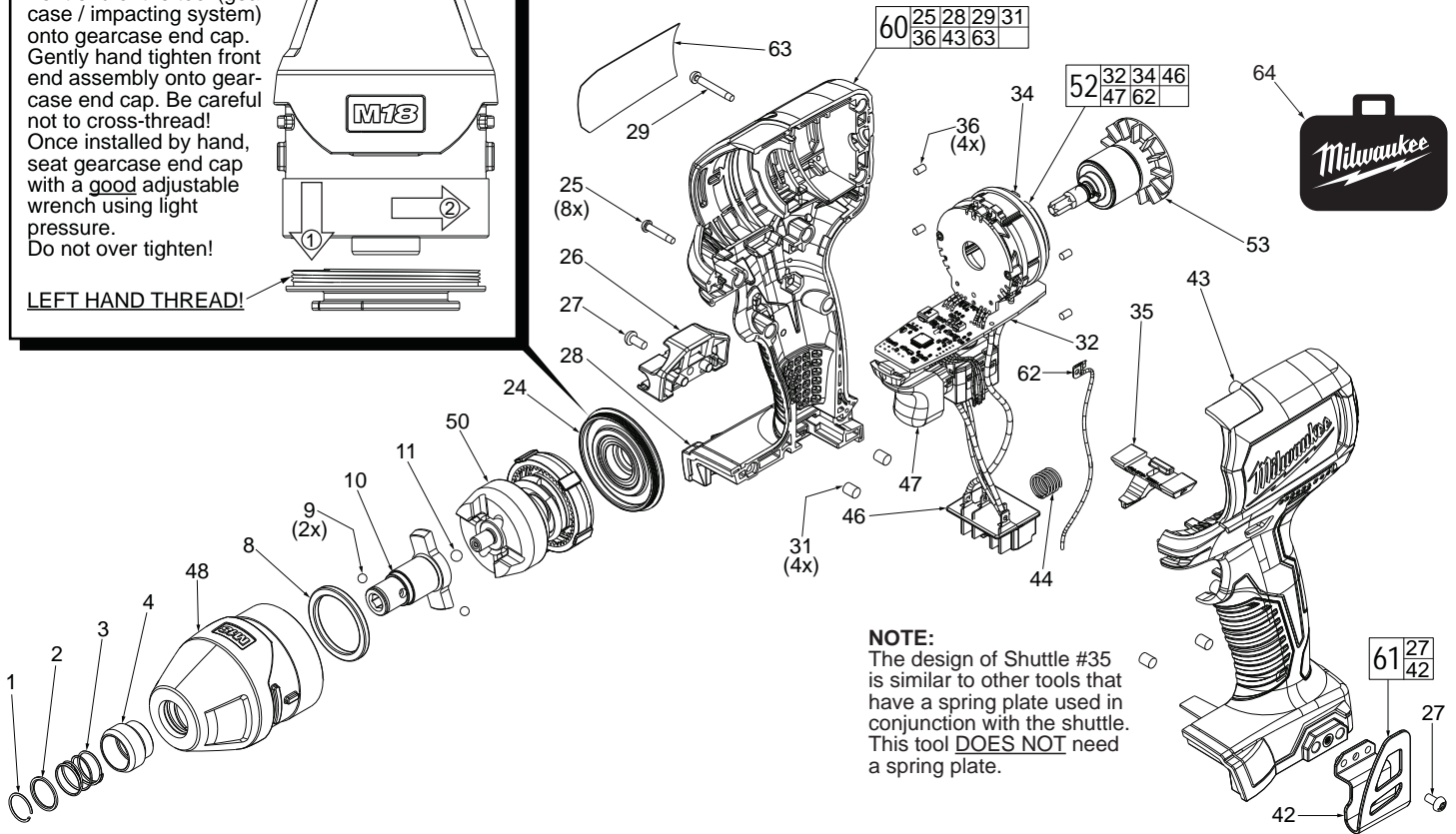
IMPORTANT NOTE: Gearcase end cap #24 is LEFT HAND THREAD!

As an aid to assembly, carefully lower the complete front end of the tool (gearcase / impacting system) onto gearcase end cap. Gently hand tighten front end assembly onto gearcase end cap. Be careful not to cross-thread! Once installed by hand, seat gearcase end cap with a good adjustable wrench using light pressure. Do not over tighten!



LEFT HAND THREAD!

EXAMPLE:
Component Parts (Small #) Are Included When Ordering The Assembly (Large #).



NOTE:
The design of Shuttle #35 is similar to other tools that have a spring plate used in conjunction with the shuttle. This tool **DOES NOT** need a spring plate.

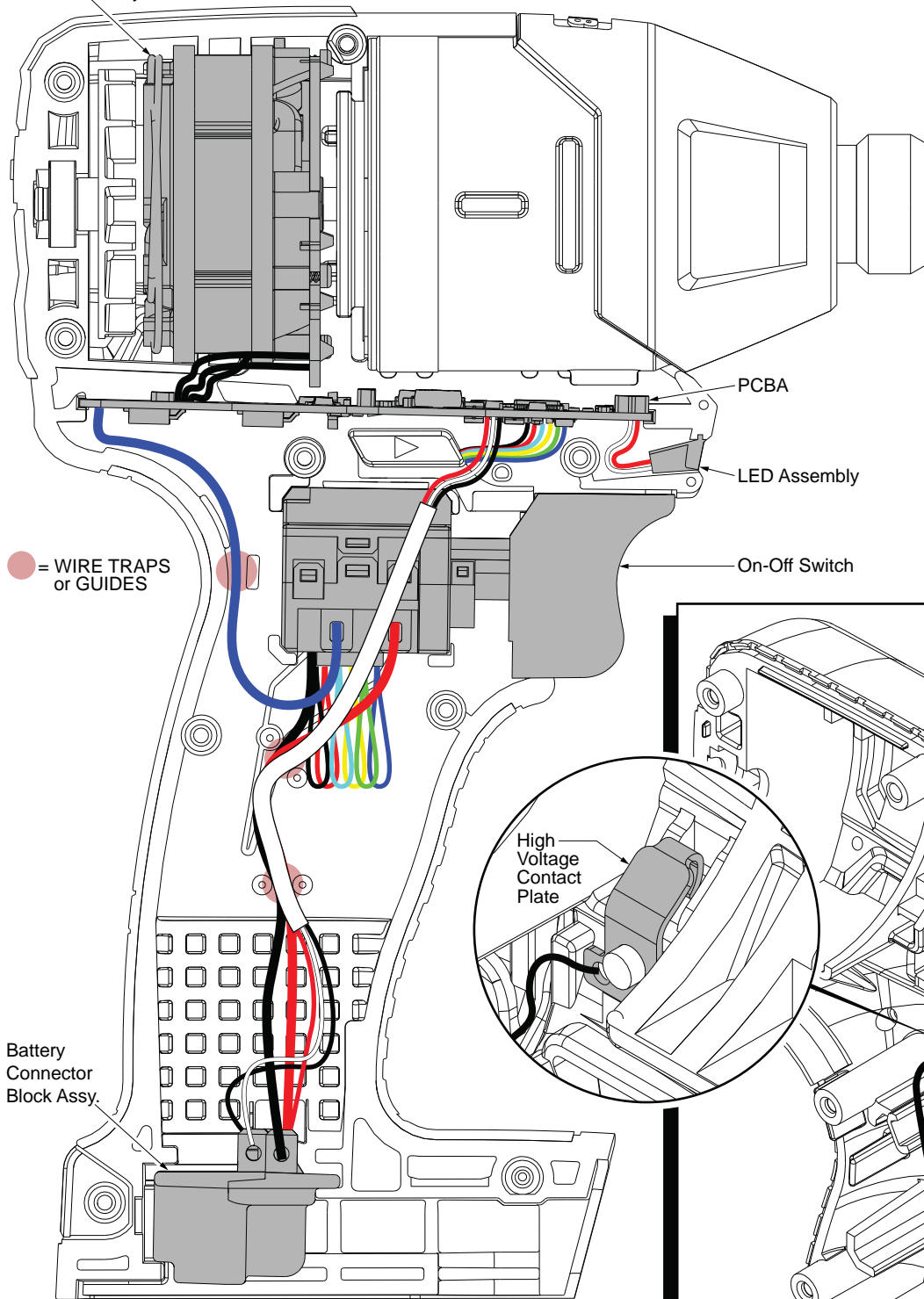
FIG.	PART NO.	DESCRIPTION OF PART	NO. REQ.
1	34-60-0725	Retaining Ring	(1)
2	45-88-2025	Washer	(1)
3	40-50-1470	Spring	(1)
4	45-22-2657	Sleeve	(1)
8	45-88-2653	Plastic Washer	(1)
9	02-02-1100	4.0mm Steel Ball	(2)
10	42-06-2750	1/4" Hex Anvil	(1)
11	02-02-1300	5mm Steel Ball	(1)
24	44-66-0425	Gearcase End Cap with Ball Bearing	(1)
25	06-82-7236	4-20 x .625 Pan Hd. Plast. T-10 Screw	(8)
26	43-72-0550	Bit Holder (Optional)	(1)
27	06-82-0130	6-32 x 5/16" Pan Hd. T-15 Screw	(2)
28	-----	Housing Cover - Right Housing Halve	(1)
29	05-86-0300	M3.0 x 22.5mm Pan Hd. ST T-10 Screw	(1)
31	45-30-1000	Rubber Slug (Battery area of housings)	(4)
32	-----	PCBA	(1)
34	-----	Stator Assembly	(1)
35	42-42-0235	Forward/Reverse Shuttle	(1)
36	45-30-2653	Rubber Slug (Stator area of housings)	(4)
42	-----	Belt Clip	(1)
43	-----	Housing Support - Left Housing Halve	(1)
44	40-50-1090	Compression Spring	(1)
46	-----	Terminal Connector Block	(1)
47	-----	On-Off Switch	(1)
48	28-50-0017	Gearcase Assembly with Bushing	(1)
50	14-46-0132	Impacting Assembly	(1)
52	14-20-2750	Electronics Assembly	(1)
53	16-07-0054	Rotor Assembly	(1)

FIG.	PART NO.	DESCRIPTION OF PART	NO. REQ.
60	31-44-0057	Housing Assembly	(1)
61	42-70-2653	Belt Clip Kit	(1)
62	23-94-0027	High Voltage Wire with Contact Plate	(1)
63	12-20-2651	Service Nameplate	(1)
64	42-55-2750	Blow Molded Carrying Case	(1)

FIG. LUBRICATION (Type 'J' Grease, No. 49-08-4220):

- 10 Lightly coat front washer surface of anvil with grease, place a dab in the ball cavities of anvil.
- 35,47 Be sure that oval slot in shuttle is over round pin on switch.
- 48 Coat inside of bushing inside front gearcase with grease.
- 50 **NOTE:** Do not wash impact assembly. Use a clean, dry cloth to wipe away any excess grease or contamination.
- 50 Lightly coat the I.D. of the ring gear and the center of the planet gears of impacting assembly with grease.
- 53 Coat pinion of rotor assembly with grease.
- 62 High voltage wire assembly is a component of the electronics assembly as well as an individual service part.

Stator Assembly



● = WIRE TRAPS or GUIDES

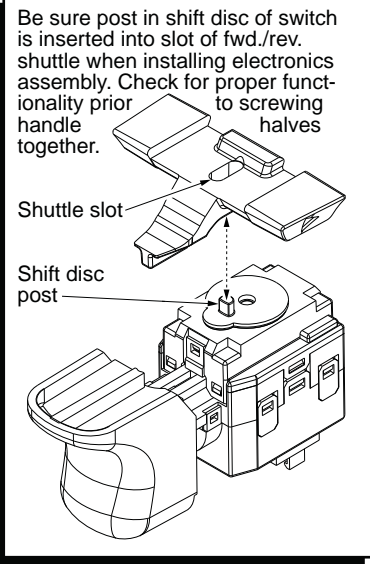
Battery Connector Block Assy.

AS AN AID TO REASSEMBLY, TAKE NOTICE OF WIRE ROUTING AND POSITION IN WIRE GUIDES AND TRAPS WHILE DISMANTLING TOOL.

BE SURE THAT ALL COMPONENTS OF THE ELECTRONICS KIT ARE SEATED FIRMLY AND SQUARELY IN THE HANDLE RECESSES.

AVOID PINCHED WIRES, BE SURE THAT ALL WIRES AND SLEEVES ARE PRESSED COMPLETELY DOWN IN WIRE GUIDES AND TRAPS.

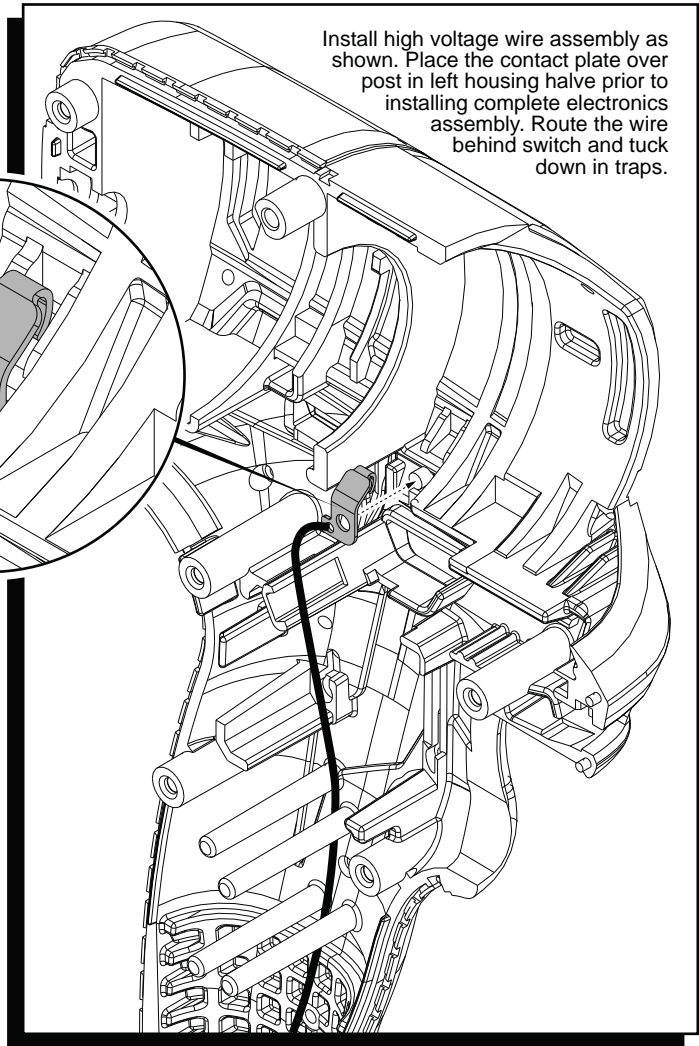
PRIOR TO INSTALLING THE HANDLE COVER ONTO THE HANDLE SUPPORT, BE SURE THAT THERE ARE NO INTERFERENCES.



Be sure post in shift disc of switch is inserted into slot of fwd./rev. shuttle when installing electronics assembly. Check for proper functionality prior to screwing handle halves together.

Shuttle slot

Shift disc post



Install high voltage wire assembly as shown. Place the contact plate over post in left housing half prior to installing complete electronics assembly. Route the wire behind switch and tuck down in traps.

High Voltage Contact Plate