

# WIRING INSTRUCTIONS

TITLE

**THUNDERBOLT™ ROTARY HAMMERS**

BULLETIN  
58-03-1620

MILWAUKEE ELECTRIC TOOL CORP. 13135 WEST LISBON RD. BROOKFIELD, WIS.

DATE  
Apr. '97

NOTE:  
Tuck all wiring into left handle half prior to assembling right handle half. This will avoid pinched wires.

C1 is to be secured into left handle half.

NOTE:  
Fast-on terminals must be completely connected between leads 3 and 9.

NOTE:  
Route lead 7 through this trap. Lead 7 to be under leads 3 and 4.

NOTE:  
Cord to be inserted into clamp trap. Cord to extend .25" minimum above top of clamp.

NOTE:  
Route field leads 3 and 4 through two wire traps in any order.

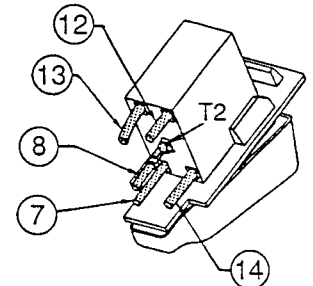
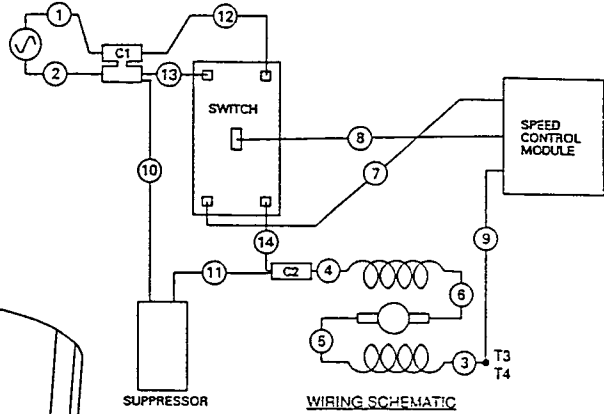
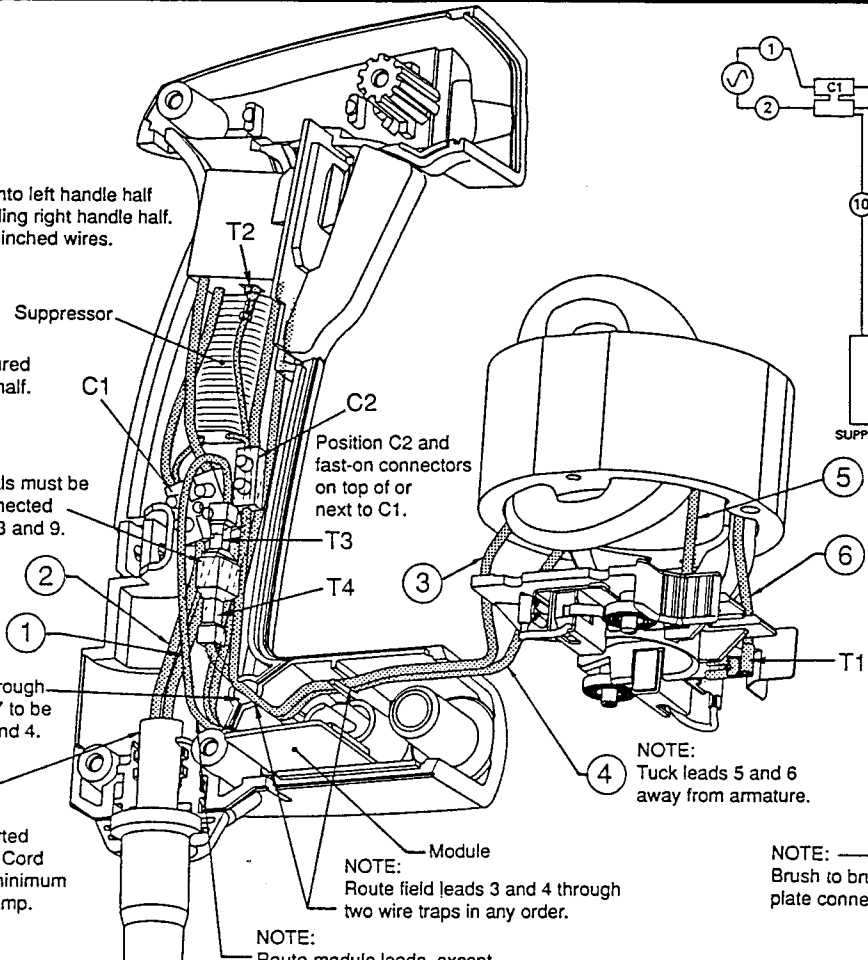
NOTE:  
Route module leads, except lead 7, through bottom trap. May be routed in any order.

NOTE:  
Tuck leads 5 and 6 away from armature.

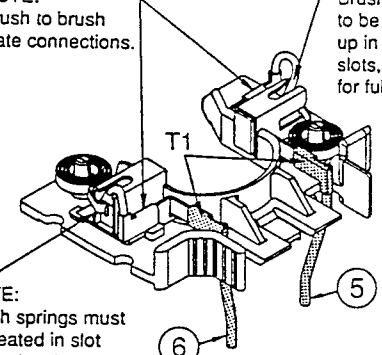
NOTE:  
Brush to brush plate connections.

NOTE:  
Brush shunt wires to be positioned up in brush tube slots, as shown, for full travel.

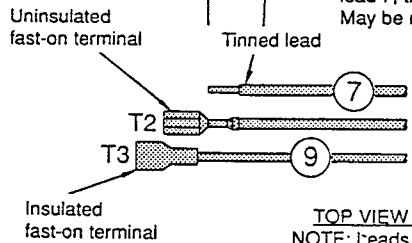
NOTE:  
Brush springs must be seated in slot located on brush tubes.



SWITCH CONNECTIONS



BRUSH CARD ASSEMBLY



TOP VIEW OF MODULE  
NOTE: Leads can exit module in any order.

## WIRING SPECIFICATIONS

Wire No.	Wire Color	Origin or Part No.	Gauge	Length	Terminals, Connectors and End Wire Preparation
1	Blue	Cord	16	2.5"	Strip .25" for C1.
2	Brown	Cord	16	2.5"	Strip .25" for C1.
3	Red	Field	16	7"	Strip .20" for T4.
4	Red	Field	16	10"	Strip .25" and tin for C2.
5	Yellow	Field	16	1.5"	Strip .18" for T1.
6	Black	Field	16	1.5"	Strip .18" for T1.
7	Black	Module	18	6"	Strip .25" and tin.
8	Black	Module	18	6"	Strip .16" for T2.
9	Blue	Module	18	6.37"	Strip .20" for T3.
10	Black	Suppressor	---	1"	Strip .25" for C1.
11	Black	Suppressor	---	1.75"	Strip .25" for C2.
12	Black	23-94-6245	18	3.25"	Strip .375" and tin for switch / Strip .25" for C1.
13	Black	23-94-6245	18	3.25"	Strip .375" and tin for switch / Strip .25" for C1.
14	Red	23-94-6070	18	3.75"	Strip .375" and tin for switch / Strip .25" for C2.

NOTE:  
All leads must be held to ± 1/8".  
All lead lengths are before stripping.

## TERMINAL DESCRIPTION

Code	Part No.	Qty.
T1	23-74-0750	2
T2	23-74-1060	1
T3	23-74-0440	1
T4	23-74-0970	1

## CONNECTOR DESCRIPTION

Code	Part No.	Qty.
C1	22-56-0451	1
C2	22-56-0456	1

BULK LEAD WIRE - BULLETIN 58-01-0003