

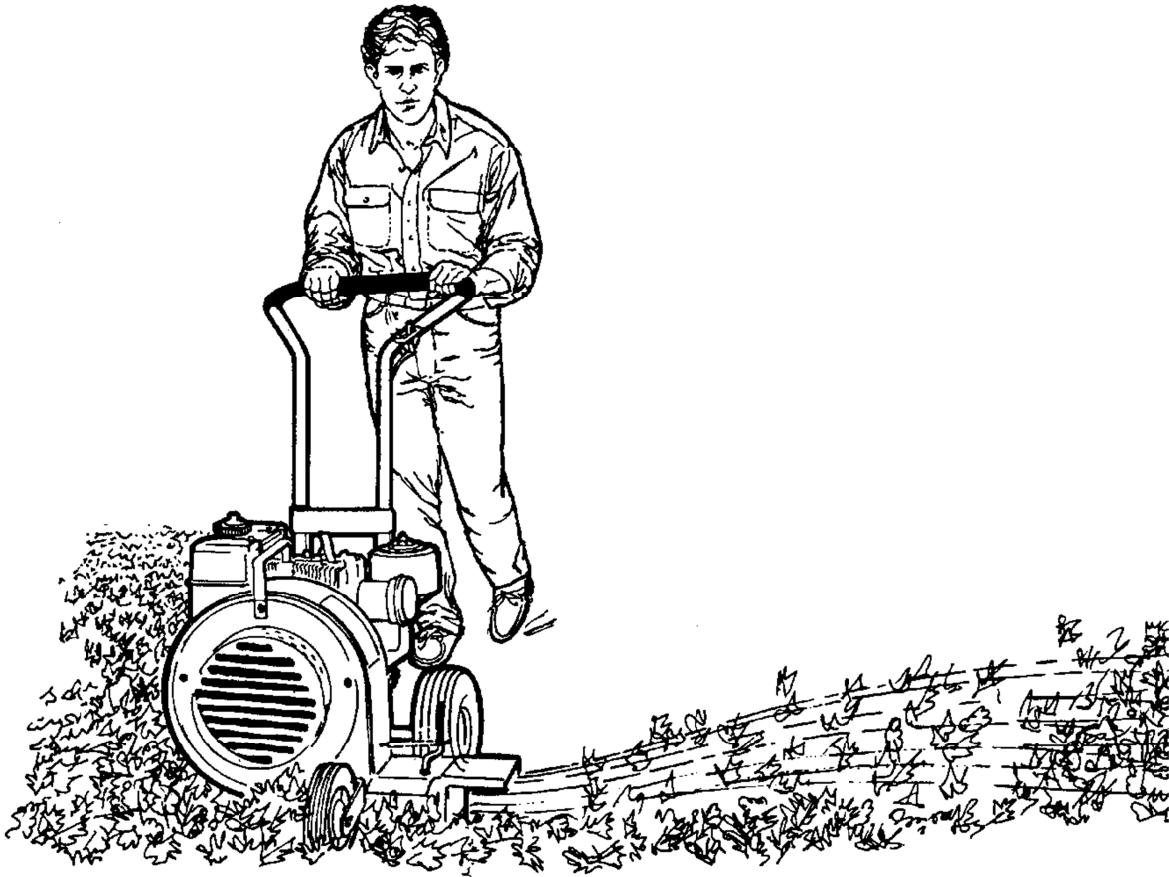
OWNER'S MANUAL

LEAF BLOWERS

LB800EZ

LB1100EZ

LB1450ICEZ



MACKISSIC, INC. P.O. BOX 111, PARKER FORD, PA 19457

PHONE: (610) 495-7181

e-mail: info@mackissic.com

FAX: (610) 495-5951

www.mackissic.com

PART # 705-0167
12/04/20

SECTION I - SAFETY

NEVER USE THE LEAF BLOWER FOR ANY PURPOSE OTHER THAN BLOWING LEAVES. IT IS DESIGNED FOR THIS USE AND ANY OTHER USE MAY CAUSE INJURY.

MAKE CERTAIN THAT ALL SAFETY LABELS ON THIS EQUIPMENT ARE KEPT CLEAN AND IN GOOD CONDITION. IF YOU NEED REPLACEMENT LABELS, PLEASE ORDER BY PART NUMBER.



091-0059



091-0083

091-0057



DANGER: THIS MACHINE CAN CRUSH, GRIND, CUT AND SEVER PARTS OF YOUR BODY IF THEY ENTER THE INLET OR DISCHARGE AREA OF YOUR LEAF BLOWER.

**ALWAYS CHECK OIL LEVEL
BEFORE STARTING ENGINE**

- Become familiar with the owner's manual before attempting to operate this machine.
- Children should not be allowed to operate this equipment.
- Before starting the leaf blower, check that all screws, nuts, bolts, and other fasteners are properly secured.
- NEVER direct the discharge air stream toward any observers, children, pets or fragile objects. Small stones, twigs, or grit can be thrown with sufficient force to cause injury or damage.
- NEVER start the engine or use your blower without the impeller cover mounted in place. Do NOT put any objects like sticks or fingers in holes of impeller cover.
- While running your leaf blower, operators should NOT allow hands or any other part of the body or loose fitting clothing near the rotating impeller which can cause injury.

SECTION II - ASSEMBLY

PACKAGE CONTENTS

<u>BOX</u>	<u>POLYBAG</u>
1. LEAF BLOWER	1. OWNER'S MANUAL
2. UPPER HANDLEBAR	2. ENGINE MANUAL
3. FRONT WHEEL AND MOUNTING BRACKET	3. LEAF BLOWER BROCHURE
4. POLYBAG	4. WARRANTY CARD
	5. HANDLEBAR BRACE
	6. SAFETY GLASSES
	7. BOLT BAG

BOLT BAGS

LB800EZ LB1100EZ- LB1450ICEZ
4 EA - 5/16-18 X 2" HHCS
6 EA - 5/16-18 NYLOCK NUTS
2 EA - 5/16-18 WHIZ NUTS
6 EA - 5/16 USS FLATWASHERS
2 EA - 5/16 X1" HHCS

STEP I – Unpacking and Checking Contents.

1. Remove the carton and place the unit on its wheels
2. After unpacking the shipping carton, compare the contents with the item list above.
3. If any parts are missing or damaged, contact your local dealer, distributor or call the factory.
4. Assembly should be done on a clean, level surface.

CHECK OIL LEVEL BEFORE STARTING

STEP II – Handle Assembly - See Figure 1 at Right

1. Insert the upper handle (item #7) into the lower handle (item # 1) with the bend in the handle pointing rearward. Handles.
2. Move the upper handle up or down slightly to align the holes in the upper and lower handles.
3. Assemble the handle bar brace (item #4,) from the polybag, to the upper and lower handles, placing the top holes of the brace on the upper handle and the lower holes on the lower handle.
4. Insert two 5/16" x 2" bolts (item #5) from the bolt bag through the upper holes of the brace then put two 5/16" flatwashers (item #2) on the bolt. Put the bolt through the upper handle, add one more 5/16" flatwasher and tighten with the 5/16" nylock nuts (item # 3).
5. Insert two 5/16" x 2" bolts through the lower holes of the brace and the lower handle bar. Again tighten with 5/16" nylock nuts. No washers are used here. Tighten securely

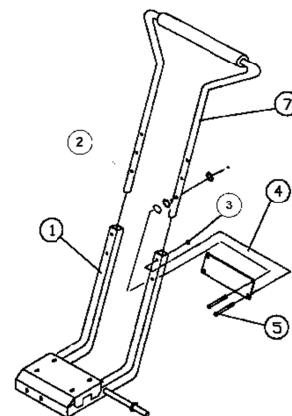
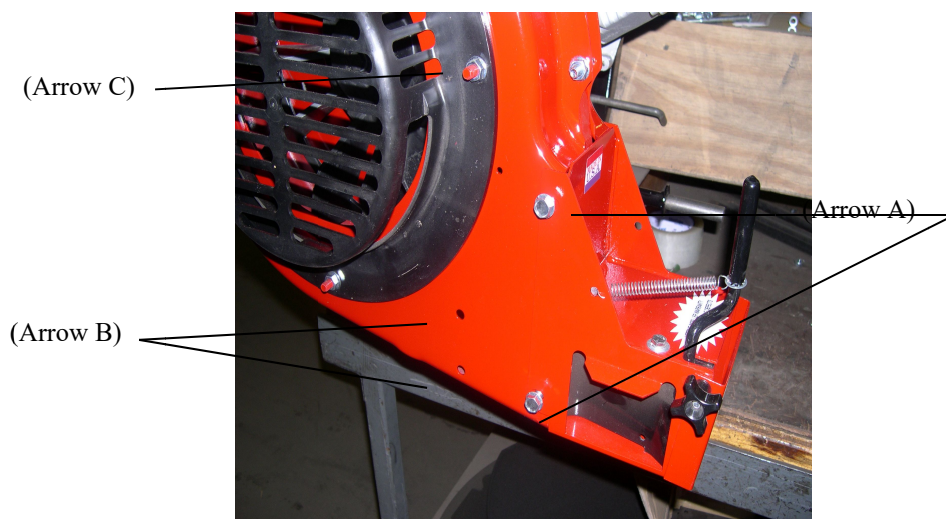


fig. 1

STEP III – Front Wheel Assembly – Units with Swivel Wheels (EZ Models)

1. Disconnect the spark plug wire on the engine before performing any service.
2. Remove the four 5/16-18 X 1" self-tapping bolts that attach the discharge chute weldment to the housing. Save the bolts for re-assembly. (Arrow A)
3. Remove the whiz nut from the impeller cover, which is at the three o'clock position (Arrow C).
4. Carefully insert two 5/16-18 X 1" bolts with the threads facing out, in the two holes indicated below. (Arrow B)
5. Attach the front wheel bracket with two 5/16-18 nylock nuts in the bottom mounting locations and using the whiz nut in the upper location.
6. Re-attach the chute weldment with the 5/16-18 X 1" self-tapping bolts removed earlier
7. Make sure all bolts are secured tightly, and then re-attach the spark plug wire on the engine.



OPTIONAL LIFT HANDLE KIT IS AVAILABLE AS AN ACCESSORY

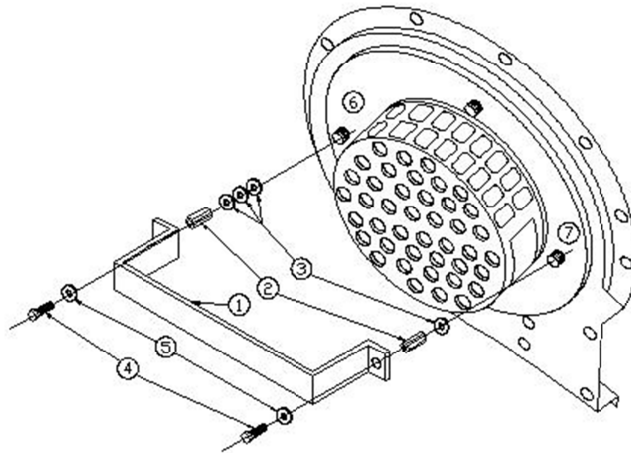
**LEAF BLOWER LIFT HANDLE KIT
PART # 705-0168**

YOUR LIFT HANDLE KIT CONSISTS OF THE FOLLOWING PARTS.

<u>ITEM #</u>	<u>PART #</u>	<u>QTY</u>	<u>DESCRIPTION</u>
1	705-0150	1	LIFT HANDLE
2	090-0616	2	5/16-18 X 1 1/8 COUPLING NUT
3	090-0233	4	5/16 USS FLAT WASHER
4	090-0066	2	5/16-18 X 3/4" HHCS
5	090-0232	2	1/4 USS FLAT WASHER

INSTALLATION DIRECTIONS

1. REMOVE EXISTING WHIZ NUTS FROM STUDS AT POINTS #6 & #7.
2. PLACE THREE WASHERS (ITEM #3) ON THE LEFT STUD AND ONE WASHER ON THE RIGHT STUD.
3. THREAD THE COUPLING NUTS ONTO THE BOTH STUDS AND SECURE WITH A 1/2" WRENCH.
4. HOLD THE LIFT HANDLE (ITEM #1) IN PLACE AND SECURE BOTH SIDES WITH A WASHER (ITEM #5) AND A BOLT (ITEM #4).
5. TIGHTEN WITH A 1/2" WRENCH.



SECTION III – LUBRICATION & ENGINE START UP

FOR INFORMATION ABOUT OIL AND FUEL, STARTING AND STOPPING PROCEDURES, RECOMMENDED MAINTENANCE, SERVICE, STORAGE AND ENGINE WARRANTY INFORMATION, REFER TO THE ENGINE OWNERS MANUAL.

THE ENGINE HAS BEEN SHIPPED DRY.

BE SURE TO SERVICE THE ENGINE ACCORDING TO THE ENGINE OWNER'S MANUAL PRIOR TO STARTING.

FAILURE TO DO SO CAN RESULT IN DAMAGE NOT WARRANTED BY THE ENGINE MANUFACTURER.

WARNING: Do not fill closer than 1/2 inch from the top of the fuel tank to prevent spills and to allow for fuel expansion. If gasoline is accidentally spilled, move the unit away from the area of the spill. Avoid creating any source of ignition until gasoline vapors have disappeared.

CAUTION: Experience indicates that alcohol blended fuels (gasohol, ethanol, methanol) can attract moisture which leads to separation and formation of acids during storage. Acidic gas can damage the fuel system or an entire engine while in storage. To avoid engine problems, the fuel system should be empty before storage for periods over 30 days. For more information, refer to the engine owner's manual. Use fresh fuel each season. Never use engine or carburetor cleaner products in the fuel tank or permanent damage may result.

**CHECK OIL LEVEL
PRIOR TO STARTING**

SECTION IV – OPERATION

**YOUR LEAF BLOWER IS DESIGNED FOR BLOWING LEAVES.
ANY OTHER USE MAY CAUSE INJURY**

1. For maximum air speed and leaf blowing power, run the engine with the throttle wide open in the fast position.
2. To move large amounts of leaves it is best to work the leaves into windrows, which are created by walking the blower back and forth over the designated area.
3. Large piles can be moved by placing the deflector in the up position to move the topmost leaves and then adjusting the deflector down to get under the remaining leaves.
4. To change airflow from side to front, simply pull diverter handle back to direct airflow to the side and push the handle forward to direct airflow to the front.
5. When frequent switching of front and side discharges is needed, attach spring to standard position. If side discharge is used frequently, attach spring to optional position, as shown in Figure #1. In the optional position, the air diverter will automatically snap from the front to the side discharge when engine speed is reduced. The spring is easily moved with needle nose pliers.
6. To remove leaves from concrete or asphalt surfaces the deflector should be positioned downward for best results.
7. The front discharge is used for blowing along buildings and curbs or for cleaning sidewalks.
8. When moving along mulched flowerbeds or stony areas, adjust the airflow forward and lower the engine speed to avoid unwanted blowing of these areas.

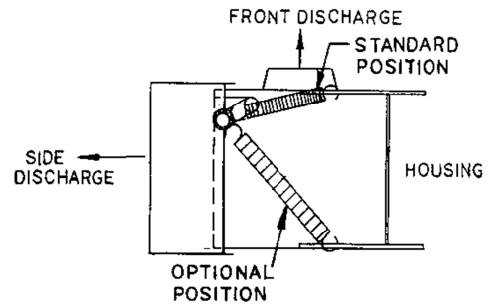
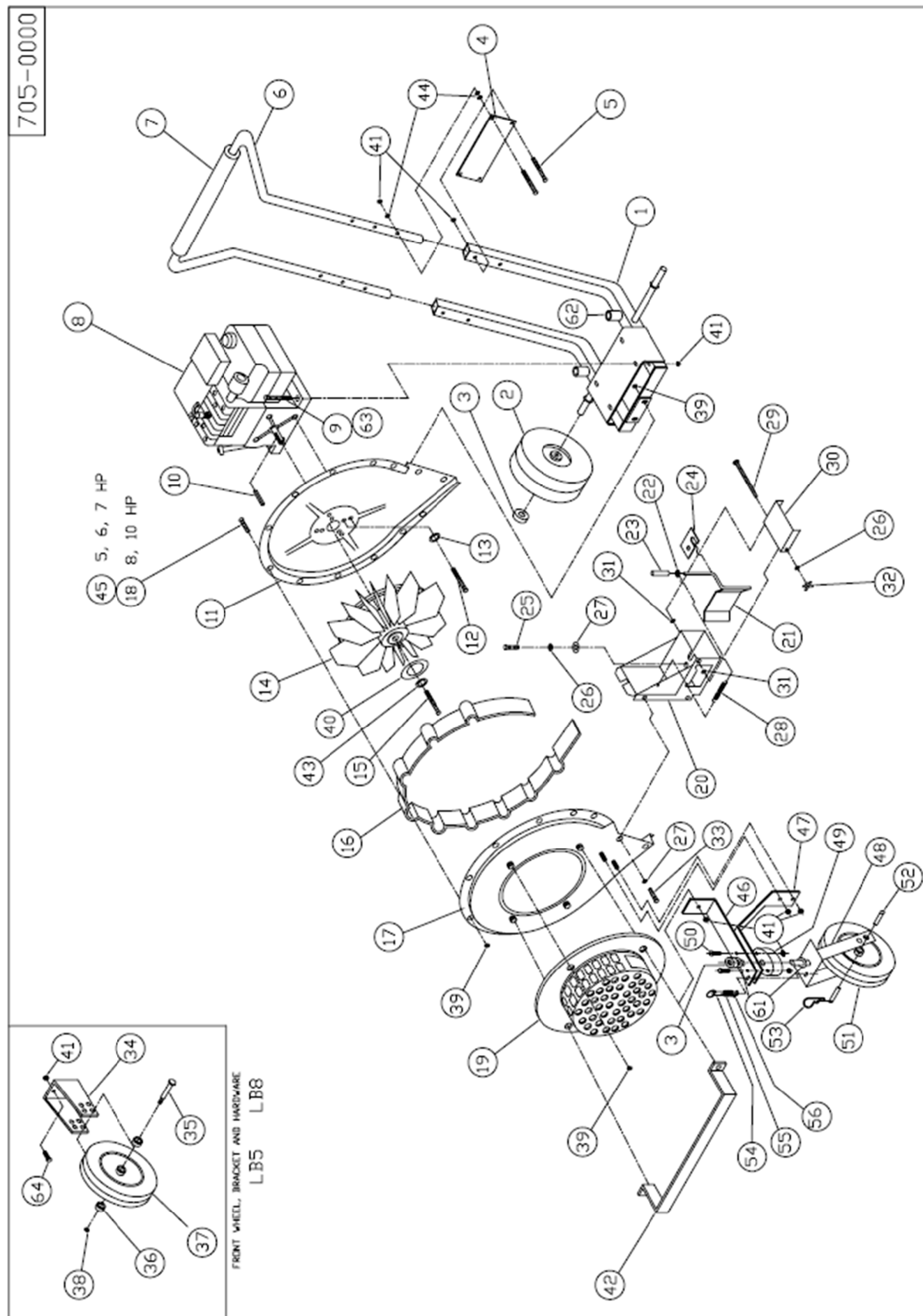


FIGURE NO. 1

SECTION V – MAINTENANCE & STORAGE

1. If your leaf blower should start making any unusual noise or have unusual vibration, stop the engine, disconnect the spark plug wire and make sure that all moving parts have come to a complete stop before attempting to inspect, service or clean any obstructions or blockages from the intake or discharge openings.
2. Stop the engine and allow it to cool for at least two minutes before refilling the gas tank or before lifting the leaf blower.
3. Periodically apply a small amount of grease to the shaft on the wheel bracket weldment (item #48, pg. 11) and to the axle on the lower frame weldment (item #1, pg. 11) where the wheels ride.
4. Follow the **ENGINE OWNER'S MANUAL** for engine maintenance, service and repair.
5. Do not attempt to tamper with the engine governor settings. These are preset at the factory for maximum safe operating speed which protects the engine from over speeding. Any attempt to alter this setting may void warranty claims.
6. Do not run this machine in an enclosed area. Exhaust from the engine contains carbon monoxide which is a colorless, odorless, tasteless and deadly gas.
7. When not in use, your leaf blower should be stored out of the reach of children. Be sure there are no gasoline fumes in the storage area.
8. Be sure to allow unit to cool before storing.
9. For long periods of storage (over 30 days), refer to the **ENGINE OWNER'S MANUAL** for additional storage information.



LEAF BLOWER PARTS LIST

ITEM NO.	PART NO.	QTY.	DESCRIPTION
1	705-0196	1	LOWER FRAME WELDMENT
2	030-0240	2	4.10/3.50 – 6 PNEUMATIC WHEEL
3	090-0536	2	SHAFT COLLAR
3a	090-0457	1	PUSH CAP – EZ MODELS
3a	500-0010	1	SPACER – EZ MODELS
4	705-0132	1	METAL HANDLE BAR BRACE
5	090-0072	4	5/16-18 X 2" HHCS
6	705-0034	1	UPPER HANDLEBAR ASSEMBLY
7	705-0002	1	HANDLEBAR GRIP
8		1	ENGINE – SEE PART # AT END OF THIS LIST
9	090-0090	4	5/16-18 X 1 1/2" HHCS – 800 SERIES MODELS
10	703-0424	1	1/4 X 1/4 X 2 KEY
11	705-0095	1	ENGINE HOUSING WELDMENT
12	090-0408	4	5/16-24 X 3/4" HHCS
13	090-0394	4	5/16 SPLIT LOCKWASHER
14	705-0180	1	IMPELLER
14	705-0201	1	IMPELLER – ALL LB1450'S
15	090-0021	1	3/8-24 X 1 1/4" HHCS
16	705-0097	1	HOUSING SPACER – 1100 & 1450 SERIES MODELS
17	705-0187	1	FRONT HOUSING WELDMENT
18	090-0090	11	5/16-18 X 1 1/2" HHCS – 1100 & 1450 SERIES MODELS
19	703-0021-A	1	IMPELLER HOUSING COVER
20	705-0100	1	CHUTE WELDMENT - LB800
20	705-0104	1	CHUTE WELDMENT – 1100 & 1450 SERIES MODELS
21	705-0108	1	DIVERTER WELDMENT ASSEMBLY – LB800
21	705-0110	1	DIVERTER WELDMENT ASSEMBLY – 1100 & 1450 MODELS
22	090-0225	1	3/8" INTERNAL TOOTH LOCKWASHER
23	701-0185	1	DIVERTER HANDLE GRIP
24	705-0113	1	DIVERTER CLIP
25	090-0052	1	1/4-20 X 1/2" HHCS
26	090-0378	2	1/4 SPLIT LOCKWASHER
27	090-0232	5	1/4 USS FLATWASHER
28	703-0425	1	DIVERTER EXTENSION SPRING
29	090-0480	1	1/4-20 X 5" CARRIAGE BOLT – LB800
29	090-0481	1	1/4-20 X 6" CARRIAGE BOLT – 1100 & 1450 SERIES MODELS
30	705-0098	1	DEFLECTOR – LB800
30	705-0099	1	DEFLECTOR – 1100 & 1450 SERIES MODELS
31	090-0223	2	1/4" INTERNAL TOOTH LOCKWASHER
32	705-0049	1	ADJUSTMENT KNOB – 1/4-20 THREAD
33	090-0503	4	5/16-18 X 5/8" SELF TAPPING HHCS
34	704-0177	1	FRONT WHEEL BRACKET – LB800, LB1100
35	705-0056-2	1	1/2" SHOULDER BOLT
36	500-0010	2	WHEEL SPACER
37	703-0025	1	FRONT WHEEL – LB800, LB1100
38	090-0461	1	3/8-16 NYLOCK NUT
39	090-0418	20	5/16-18 WHIZ NUT
40	090-0540	1	2" FLATWASHER
41	090-0460	12	5/16-18 NYLOCK NUT
42	705-0150	1	LIFT HANDLE – OPTIONAL ACCESSORY
43	090-0228	1	3/8 SPLIT LOCKWASHER
44	090-0233	6	5/16 USS FLATWASHER
45	090-0067	11	5/16-18 X 5/8" HHCS
46	705-0159	1	WHEEL SUPPORT – TOP BRACKET - EZ MODELS
47	705-0160	1	WHEEL SUPPORT – BOTTOM BRACKET - EZ MODELS

48	705-0161	1	WHEEL BRACKET WELDMENT - EZ MODELS
49	030-0264	1	PIVOT WHEEL BEARING - EZ MODELS
50	090-0088	2	5/16-18 X 1" HHCS - EZ MODELS
51	030-0263	1	2.80/2.50-4 WHEEL - EZ MODELS
52	090-0613	1	1/2 X 4" CLEVIS PIN - EZ MODELS
53	100-0015	1	3/32 HAIR SPRING - EZ MODELS
54	705-0166	1	WHEEL LOCK PIN - EZ MODELS
55	709-3409	1	SPRING - EZ MODELS
56	090-0454	1	ROLL PIN - EZ MODELS
61	090-0615	2	WASHER - EZ MODELS
62	705-0165	2	ENGINE SPACERS – 1450 SERIES MODELS
63	090-0077	4	5/16-18 x 4" HHCS – 1450 SERIES MODELS
64	090-0066	2	5/16-18 X 3/4" HHCS
--	090-0702	1	5/16-18 X 4-1/2 HHCS - EX MODEL ONLY
NOT SHOWN	705-0197	1	IMPELLER SPACER – ALL LB1450'S
NOT SHOWN	705-0198	1	ENGINE TO HOUSING SPACER – ALL LB1450'S
NOT SHOWN	705-0199	1	BUMPER TO HOUSING SPACER – ALL LB1450'S

ENGINES

MODEL	ENGINE #
LB800EZ	030-0504
LB1100EZ	030-0507
LB1450ICEZ	030-0652

MACKISSIC, INC.

CALL OR EMAIL FOR INFORMATION
ON ANY OF OUR QUALITY BUILT PRODUCT LINES
www.mackissic.com

- | | |
|--|--|
| <input type="checkbox"/> LEAF BLOWERS | <input type="checkbox"/> STUMP CUTTERS |
| <input type="checkbox"/> LEAF CYCLERS | <input type="checkbox"/> TILLERS |
| <input type="checkbox"/> CHIPPER-SHREDDERS | <input type="checkbox"/> VACUUM-CHIPPERS |
| <input type="checkbox"/> SPRAYERS | |

P.O. BOX 111, PARKER FORD, PA 19457
PHONE: 610-495-7181 FAX: 610-495-5951
e-mail: info@mackissic.com

LIMITED WARRANTY

Any product manufactured by MacKissic, Inc. and found, in the judgment of MacKissic, Inc., to be defective in material or workmanship, will be repaired or replaced by an Authorized MacKissic Service Dealer without charge for parts and labor to the original owner of the MacKissic product.

The MacKissic product including any defective part must be returned to an Authorized MacKissic Service Dealer within the warranty period. The expense of delivering the product to the dealer for warranty work and the expense of returning it back to the owner after repair or replacement will be borne by the owner. MacKissic's responsibility is limited to making the required repairs or replacements only. No claim of breach of warranty shall be cause for cancellation or rescission of the sales contract of any MacKissic product. Proof of purchase will be required by the dealer to substantiate any warranty claim. All warranty work must be performed by an Authorized MacKissic Service Dealer.

This warranty is limited to two years from the date of original retail purchase for any MacKissic product (except Tillers) that is used for consumer purposes or 90 day for commercial and rental use.

This warranty does not cover any product that has been subject to misuse, abuse, neglect, negligence, or accident, or that has been operated in any way contrary to or inconsistent with the operating instructions as specified in the owner's manual. The warranty does not apply to any damage to the product that is the result of improper maintenance, or to any product or parts that have not been assembled or installed as specified in the owner's manual.

The warranty does not cover any product that has been altered or modified. In addition, the warranty does not extend to repairs made necessary by normal wear, or by the use of parts or accessories which, in the judgment of MacKissic, Inc., are either incompatible with the MacKissic product or adversely affect its operation, performance or durability. This warranty does not cover engines, electric starters, batteries, and tires which are warranted separately by their manufacturer and for a different period of time.

MacKissic, Inc. reserves the right to change the design of any product without assuming any obligation to modify any product previously manufactured.

THE DURATION OF THE LIMITED WARRANTY IS TWO YEARS CONSUMER, 90 DAYS COMMERCIAL AND RENTAL USE. REPAIR OR REPLACEMENT AS PROCEEDED UNDER THIS LIMITED WARRANTY IS THE EXCLUSIVE REMEDY OF THE PURCHASER. MacKissic, INC. SHALL NOT BE LIABLE FOR ANY INCIDENTAL OR CONSEQUENTIAL DAMAGES, EXCEPT THE LIMITED WARRANTY DESCRIBED ABOVE, ALL IMPLIED WARRANTIES (MERCHANTABILITY AND FITNESS FOR A PARTICULAR PURPOSE) ARE SPECIFICALLY DISCLAIMED.

MacKissic, INC. ASSUMES NO RESPONSIBILITY FOR INCIDENTAL, CONSEQUENTIAL OR OTHER DAMAGES INCLUDING, BUT NOT LIMITED TO, EXPENSE FOR GASOLINE, OIL, EXPENSE OF DELIVERING THE PRODUCT TO AN AUTHORIZED MACKISSIC SERVICE DEALER AND EXPENSE OF RETURNING IT BACK TO THE OWNER, MECHANIC'S TRAVEL TIME, TELEPHONE OR TELEGRAM CHARGES, RENTAL OF A LIKE PRODUCT DURING THE TIME WARRANTY REPAIRS ARE BEING PERFORMED, TRAVEL, LOSS OR DAMAGE TO PERSONAL PROPERTY, LOSS OF REVENUE, LOSS OF USE OF THE PRODUCT, LOSS OF TIME OR INCONVENIENCE.

This warranty gives you specific legal rights, and you may also have other rights that vary from state to state.

12/04/20