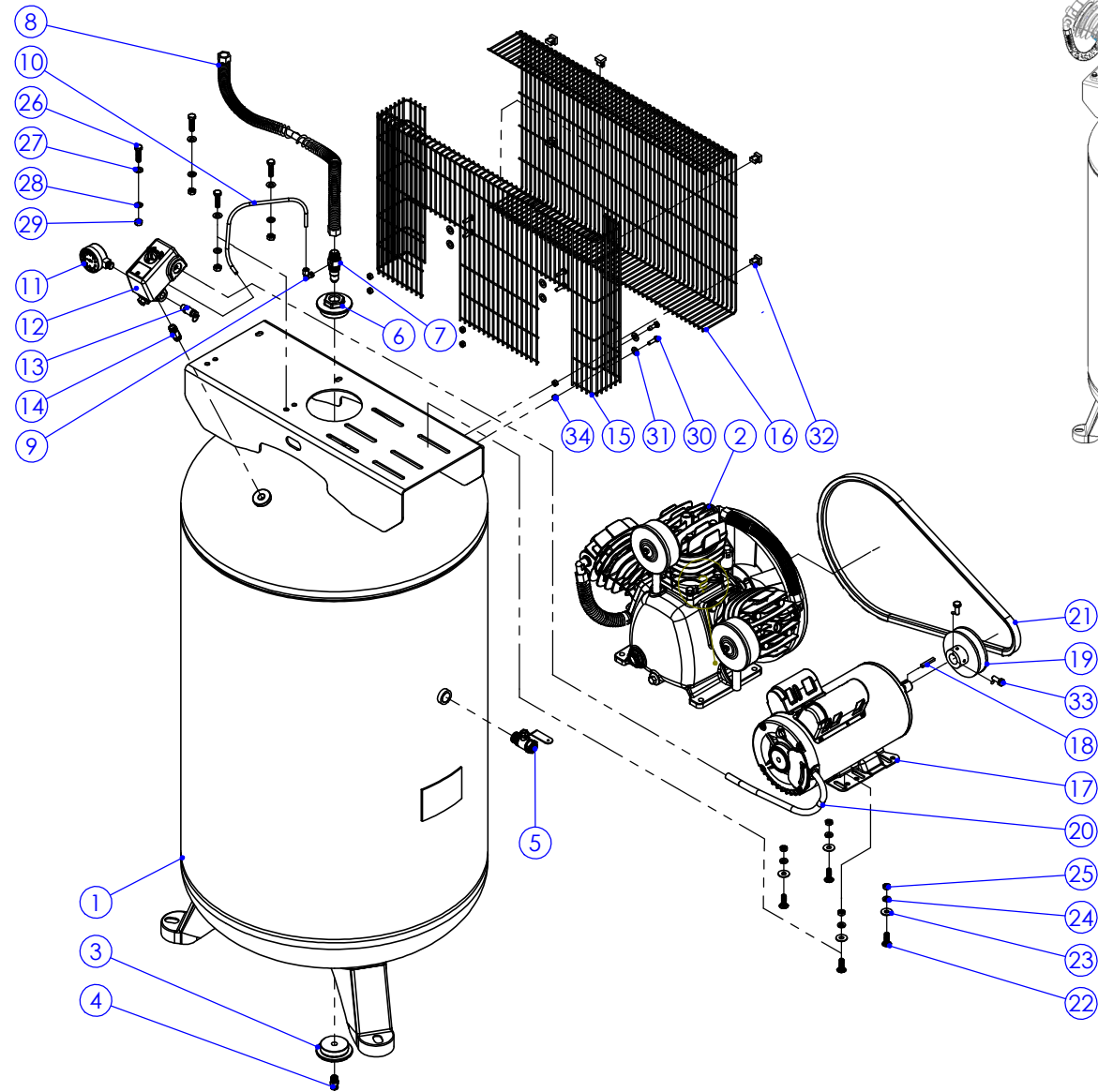


MP-6580V2 MAIN ASSEMBLY

| MP-6580V2 MAIN PARTS | | V-20210804 |
|----------------------|------------------------------|------------|
| NO. | DESCRIPTION | Q' TY |
| 1 | TANK | 1 |
| 2 | AIR COMPRESSOR PUMP | 1 |
| 3 | JOINT 2.0-1/4 in | 1 |
| 4 | DRAIN VALVE | 1 |
| 5 | AIR VALVE | 1 |
| 6 | JOINT 2.0-1/2 in | 1 |
| 7 | CHECK VALVE | 1 |
| 8 | OUTLET PIPE | 1 |
| 9 | ELBOW JOINT | 1 |
| 10 | RELEASE PIPE | 1 |
| 11 | PRESSUER GAUGE | 1 |
| 12 | PRESSURE SWITCH | 1 |
| 13 | SAFETY VALVE | 1 |
| 14 | NIPPLE JOINT | 1 |
| 15 | BELT GUARD-IN | 1 |
| 16 | BELT GUARD-OUT | 1 |
| 17 | MOTOR | 1 |
| 18 | SHAFT KEY | 1 |
| 19 | MOTOR PULLEY | 1 |
| 20 | MOTOR CABLE | 1 |
| 21 | BELT | 1 |
| 22 | LOCK BOLT FOR MOTOR | 4 |
| 23 | WASHER FOR MOTOR | 8 |
| 24 | SPRING WASHER FOR MOTOR | 4 |
| 25 | LOCK NUT FOR MOTOR | 4 |
| 26 | LOCK BOLT FOR PUMP | 4 |
| 27 | WASHER FOR PUMP | 4 |
| 28 | SPRING WASHER FOR PUMP | 4 |
| 29 | LOCK NUT FOR PUMP | 4 |
| 30 | LOCK BOLT FOR BELT GUARD-IN | 6 |
| 31 | WASHER FOR BELT GUARD-IN | 6 |
| 32 | LOCK PLUG FOR BELT GUARD-OUT | 5 |
| 33 | LOCK BOLT FOR MOTOR PULLEY | 2 |
| 34 | LOCK NUT FOR BELT GUARD-IN | 6 |



ASSEMBLED IN USA