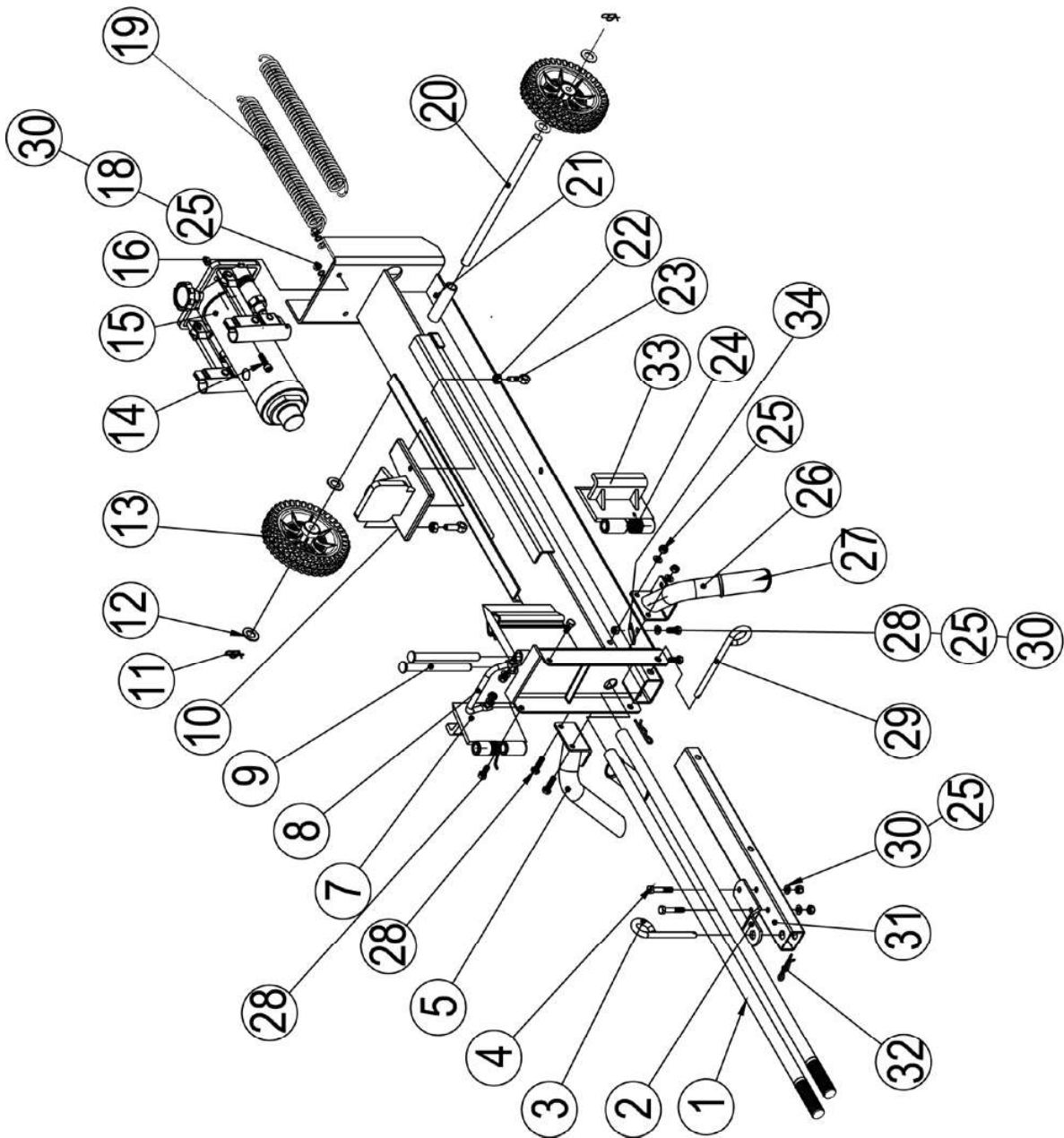


Parts Drawing & Parts List



Parts Drawing & Parts List

Ref#	Drawing No.	Description	Qty
1	MS10-30022	Operation Handle	2
2	N390-00002	Hitch Pin Bracket	1
3	N180-00013-DX	Hitch Pin	1
4	9201-08045-DX8.8	Hex Bolt M8x45	2
5	MS12-06000	Support Leg (right)	1
7	MS12-03000	Tension Plate	1
8	MS12-00007	Handle	1
9	MS12-00001-DX	Hinge Pin	2
10	MS12-05000	Ram Plate	1
11	N57F-00007-DX	R Pin	2
12	9301-16000-DX	Flat Washer Ø16	4
13	MS12A-00001	10-2.75 Flat Free Wheel	2
14	9105-08030-FH	Screw M8x30	2
15	MS12-01000	Ram	1
16	MS12-00008-DX	Spacer	2
18	9306-08000-DX	Lock Washer Ø8	2
19	MS12-00009-FH	Latch Spring	2
20	MS12A-00002	Wheel Axle	1
21	MS12-02000	Beam	1
22	9206-01000-DX	Nylon Lock Nut M10	2
23	9119-10040-FH	Eyelet Bolt M10x40	2
24	MS12-00002-FH	Torsional spring	2
25	9206-08000-DX	Nylon Lock Nut M8	10
26	MS12-04000	Support Leg (left)	1
27	MS12-00005	Foot strap	2
28	9101-08025-DX8.8	Hex Bolt M8x25	6
29	MS12-00004-DX	Long Hitch Pin	1
30	9301-08000-DX	Flat Washer Ø8	10
31	MS12-00003	Tow Bar	1
32	N580-00015-DX	R Pin Ø2x60	2
33	MS12-03100	Tension Plate 2	1
34	MS12-00010	Steel Flat	2