

LITTLE WONDER[®]

monster

Truckloader

MODELS:
8183-04-01
18 HP SKID MOUNT

8184-04-01
18 HP SWING ARM



MAN 100102

Rev. A 07-2014

Original Language Instructions



SCHILLER

GROUNDS
CARE

PARTS / OPERATOR'S MANUAL

CALIFORNIA

Proposition 65 Warning

Diesel engine exhaust and some of its constituents are known to the State of California to cause cancer, birth defects and other reproductive harm.

⚠ WARNING

The engine exhaust from this product contains chemicals known to the State of California to cause cancer, birth defects or other reproductive harm.

CALIFORNIA

Proposition 65 Warning

Battery posts, terminals, wiring insulation, and related accessories contain lead and lead compounds, chemicals known to the State of California to cause cancer and birth defects or other reproductive harm.
WASH HANDS AFTER HANDLING.

TRUCKLOADER

IMPORTANT MESSAGE

On behalf of everyone at Little Wonder, we would like to thank you for your purchase of a Little Wonder TruckLoader. This professional truckloader was designed to the highest standards to ensure many hours of uninterrupted service.

This machine comes with an Operators / Parts Manual. The useful life and good service you receive from this machine depends to a large extent on how well you read and understand this manual. Treat your machine properly, lubricate and adjust it as instructed, and it will give you many years of reliable service.

Your safe use of this Little Wonder product is one of our prime design objectives. Many safety features are built in, but we also rely on your good sense and care to achieve accident-free operation. For best protection, study the manual thoroughly. Learn the proper operation of all controls. Observe all safety precautions. Follow all instructions and warnings. Do not remove or defeat any safety features. Make sure those who operate this machine are as well informed and careful in its use as you are.

See a Little Wonder dealer for any service or parts needed. Little Wonder service ensures that you continue to receive the best results possible from Little Wonder products. You can trust Little Wonder replacement parts because they are manufactured with the same high precision and quality as the original parts.

Little Wonder designs and builds its equipment to serve many years in a safe and productive manner. For longest life, use this machine only as directed in the manuals, keep it in good repair and follow safety warnings and instructions. You'll always be glad you did.

Little Wonder
1028 Street Rd.
Southampton, PA 18966

TABLE OF CONTENTS	FIGURES	PAGE
SAFETY.....		2-6
LABELS.....		7
SET-UP INSTRUCTIONS.....		8-10
CONTROLS.....		11
OPERATION.....		12-13
MAINTENANCE / STORAGE.....		14
SPECIFICATIONS.....		15
PARTS SECTION.....		16-17
WARRANTY		BACK COVER

NOTICE !!!

Unauthorized modifications may present **extreme** safety hazards to operators and bystanders and could also result in product damage.

Little Wonder strongly warns against, rejects and disclaims any modifications, add-on accessories or product alterations that are not designed, developed, tested and approved by Little Wonder Engineering Department. Any Little Wonder product that is altered, modified or changed in any manner not specifically authorized after original manufacture—including the addition of “aftermarket” accessories or component parts not specifically approved by Little Wonder—will result in the Little Wonder warranty being voided.

Any and all liability for personal injury and/or property damage caused by any unauthorized modifications, add-on accessories or products not approved by Little Wonder will be considered the responsibility of the individual(s) or company designing and/or making such changes. Little Wonder will vigorously pursue full indemnification and costs from any party responsible for such unauthorized post-manufacture modifications and/or accessories should personal injury and/or property damage result.



This symbol means:
ATTENTION!
BECOME ALERT!

Your safety and the safety of others is involved.

Signal word definitions:

The signal words below are used to identify levels of hazard seriousness. These words appear in this manual and on the safety labels attached to Little Wonder machines. For your safety and the safety of others, read and follow the information given with these signal words and/or the symbol shown above.

⚠ DANGER

DANGER indicates an imminently hazardous situation which, if not avoided, **WILL** result in death or serious injury.

⚠ WARNING

WARNING indicates a potentially hazardous situation which, if not avoided, **COULD** result in death or serious injury.

⚠ CAUTION

CAUTION indicates a potentially hazardous situation which, if not avoided, **MAY** result in minor or moderate injury. It may also be used to alert against unsafe practices or property damage.

CAUTION

CAUTION used without the safety alert symbol indicates a potentially hazardous situation which, if not avoided, **MAY** result in property damage

Schiller Grounds Care, Inc.

1028 Street Road
Southampton, PA 18966 U.S.A
Phone: 215-357-5110
Fax: 215-357-8045

MODEL NUMBER

SERIAL NUMBER

MODEL NUMBER: This number appears on sales literature, technical manuals and price lists.

SERIAL NUMBER: This number appears only on your unit. It contains the model number followed consecutively by the serial number. Use this number when ordering parts or seeking warranty information.

TRUCKLOADER

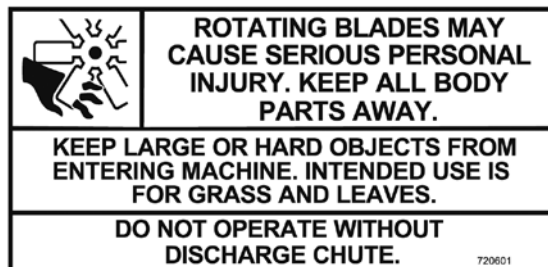
PREPARING FOR SAFE OPERATION

Operator preparation and training

Read the Operation & Safety Manual



- If an operator or mechanic cannot read English, it is the owner's responsibility to explain this material to them. If any portion of this material is unclear, contact your factory representative for clarification.
- Decals regarding safety and/or unit operations have been placed on parts of the machine. Adhere to the warnings and instructions depicted in these decals. Replace any missing or damaged labels.
- Become familiar with the safe operation of the equipment, operator controls and safety signs. Know how to stop the engine and attachments quickly in an emergency. Do not operate or allow another person to operate this machine if there are any questions about safety.
- All operators and mechanics should be trained. The owner is responsible for training the users. Never attempt to use a machine that is damaged or has unauthorized modifications.
- Wear appropriate clothing, including gloves. Do not operate barefoot or when wearing open sandals. Long hair, loose clothing or jewelry may get tangled in moving parts.
- Wear hearing protection.
- Wear safety glasses.
- Wear a dust mask to avoid breathing dust.
- Never allow underage children, unskilled or improperly trained people to operate this equipment. Local regulations can restrict the age of the operator. Never allow to ride, sit or stand on machine.
- Keep warning labels and this operator's manual legible and intact. Replacement labels and manuals are available from the factory.
- Do not operate machine while under the influence of drugs or alcohol.
- The owner/user can prevent and is responsible for accidents or injuries occurring to themselves, other people or property.



Site preparation and circumstances

- If TruckLoader is mounted on a trailer, make sure that the driver of the towing vehicle has the operator of the TruckLoader in full view at all times.
- Check the area to be cleared of objects such as rocks, toys, wire or other debris that may be picked up or thrown by the machine.
- Be sure the area is clear of pets and people, especially young children. Never assume they will remain where you last saw them. Stop the machine if any enter the area.
- Use machine only in daylight or in good artificial light.
- Evaluate the terrain to determine how to safely perform the job. Only use accessories and attachments approved by the manufacturer.

Machine preparation

- Do not tamper with or defeat safety devices. Keep guards, shields and interlock safety devices in place and in proper working condition. They are for your protection.
- Keep all fasteners such as nuts, bolts and pins well secured.
- Verify that machine and attachments, if any, are in good operating condition.
- Do not start machine until ready to use.
- Do not stand in front or behind machine. Operator MUST stay on the side of the machine.

OPERATION SAFETY**In general**

- Use extra care when loading or unloading the truckloader onto a trailer or truck.
- Slow down and use caution when making turns and crossing roads and sidewalks.
- Do not run the engine in an enclosed area where dangerous carbon monoxide fumes can collect.
- While operating the machine, maintain a safe operating position, secure footing, and good balance at all times.
- Before operating, lower the discharge chute.
- Keep a safe distance between two or more operators when working together simultaneously.
- Keep clear of the discharge opening at all times. Never direct the discharge toward a bystander. Stop operation if someone approaches.
- Never leave a machine unattended. Always turn off engine, set throttle to SLOW, key is in OFF position, and fan has come to a complete stop.
- Maintain machine according to manufacturer's schedule and instructions for maximum safety and best results.
- Do not park machine on a steep grade or slope; the machine can roll away causing personal injury or damage to property.
- Never look into the hose or discharge chute while machine is running. Never operate machine without suction hose attached properly.

Starting

- Start only according to instructions in this manual or on the machine.
- When starting the engine, make sure hands and feet are clear of the chute.
- Do not start the machine while standing in front of the discharge chute or with the chute directed at someone.
- Do not change engine governor settings or overspeed the engine. Operating the engine at excessive speed can increase the hazard of personal injury.

Interrupting operation

- Before leaving the operator's position:
 - Move throttle to the SLOW position.
 - Shut off the engine and remove the key.
- Move the throttle to the SLOW position, turn key to the OFF position and wait till all moving parts have come to a complete stop.
 - before refueling;
- Move the throttle to the SLOW position, turn key to the OFF position, wait till all moving parts have come to a complete stop and disconnect the spark plug wire(s) or remove the key:
 - before clearing blockages or unclogging chute;
 - before checking, cleaning or working on the machine;
 - after striking a foreign object. Inspect the machine for damage and make repairs before restarting;
 - if the machine begins to vibrate abnormally: shut off machine immediately. Inspect and make repairs as needed before restarting;
 - except for repairs or adjustments as specifically noted, such as for carburetor adjustment, where the engine must be running. Keep hands and feet clear of moving parts in these circumstances.
- Allow the fan to come to a complete stop when stopping operation to clear blockages, unclog, inspect the machine, do maintenance or repair.
- Reduce the throttle setting to SLOW during engine shut-down. Turn the key to the OFF position.

MAINTENANCE SAFETY

In general

- Maintain machine according to manufacturer's schedule and instructions for maximum safety and best results.
- Park supporting vehicle on level ground.
- Rotating Impeller: Do not attempt to remove materials from intake or discharge when truckloader is running or impeller is still rotating.
- Never allow untrained personnel to service machine.
- Adjust or repair only after the engine has been stopped and the fan has quit rotating.
- Inspect truckloader components regularly. If worn, damaged or deteriorated, they may expose moving parts or allow objects to be thrown.
- Replace parts if worn, damaged or faulty. Have repairs made by a qualified Little Wonder dealer or repairman. For best results, always replace with parts recommended by the manufacturer(s).
- Turn off engine, set throttle to SLOW position, turn ignition key to OFF position. Disconnect remove spark plug wire(s) before making any repairs.
- Disconnect the negative terminal first and the positive last. Reconnect positive first and negative last.
- Do not dismantle the machine without releasing or restraining forces which may cause parts to move suddenly.
- Provide adequate support, e.g. jack stands for lifted machine or parts if working beneath.
- Do not put hands or feet near or under rotating parts.
- Clean up spilled oil or fuel thoroughly.
- Replace faulty mufflers.
- To reduce fire hazards, keep the engine, muffler, battery compartment and fuel storage area free of grass, leaves, debris buildup or grease.

Rotating Impeller



- Don't attempt to remove materials from intake or discharge when unit is running or impeller is rotating.
- Fan coasts after the engine is turned off.
- Only replace impeller. Never straighten or weld them.
- Keep other persons away from impeller.
- Caution should be used when clearing debris from inside the housing. Gloves should be worn as sharp edges on the impeller or in the debris may be present.

Fuel



- Gasoline and diesel fuels are flammable; gasoline vapors are explosive. Use extra care when handling.
- Store only in containers specifically designed for fuel.
- When refueling or checking fuel level:
 - Stop the engine and allow to cool;
 - Do not smoke;
 - Refuel outdoors only;
 - Use a funnel;
 - Do not overfill;
 - If fuel is spilled, do not attempt to start the engine until the spill is cleaned up and vapors have cleared.

Sparks from static electricity can start fires or cause explosions. Flowing fuel can generate static electricity. To prevent static electricity sparks:

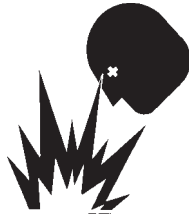
- Keep containers electrically grounded. Do not fill containers in a vehicle or on a truck or trailer bed with a plastic liner. Fill containers on the ground away from the vehicle.
- When practical, remove gas powered equipment from the truck or trailer and refuel it on the ground. If equipment must be refueled on the truck or trailer, refuel from a portable container rather than a dispenser nozzle.
- Keep the dispenser nozzle in contact with the rim of the fuel tank or container opening until fueling is complete. Do not use a nozzle lock-open device.
- Replace caps on fuel cans and tanks securely.
- If fuel is spilled on clothing change it immediately.

BATTERY

Battery acid is caustic and fumes are explosive and can cause serious injury or death.

To reduce the risk of personal injury when working near a battery:

- When working with battery acid, use protective equipment such as, but not limited to, goggles, face shield, rubber gloves and apron.
- Avoid leaning over a battery.
- Do not expose a battery to open flames or sparks.
- Be sure batteries with filler caps are properly filled with fluid.
- Do not allow battery acid to contact eyes or skin. Flush any contacted area with water immediately and get medical help.
- Do not check for spark with spark plug or plug wire removed and grounded. Use an approved tester. Sparks can ignite fumes.
- Charge batteries in an open, well ventilated area, away from sparks and flames. Unplug charger before connecting or disconnecting from battery.

**ENGINE**

- Don't run engine if there is an accumulation of debris around the muffler and cooling fins.
- Don't run engine while electrical system causes spark outside the cylinder.
- Don't touch hot mufflers, cylinders or cooling fins as contact may cause serious burns.

OIL

- EQUIPMENT IS SHIPPED WITHOUT OIL! Refer to engine manufacturers instruction manual for instructions on filling the oil.

STORAGE AND TRANSPORTATION

- Stop the engine and allow to cool before storing.
- Drain the fuel tank outdoors only.
- Store fuel in an approved container in a cool, dry place.

- Keep the machine and fuel containers in a locked storage place to prevent tampering and to keep children from playing with them.
- Do not store the machine or fuel container near heating appliances with an open flame such as a water heater or an appliance with a pilot light.
- Keep gasoline storage area free of grass, leaves and excessive grease to reduce fire hazard.
- Clean grass and debris from cutting units, drives, mufflers and engine to help prevent fires.
- When not in use store indoors in a sheltered area (a dry place) where it is not accessible to children. DO NOT store in a house. Keep throttle in SLOW position and ignition key in the OFF position.

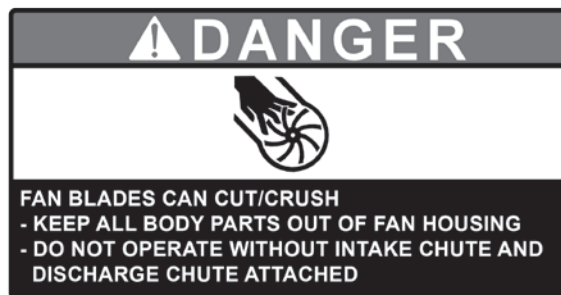
JUMP STARTING

1. Be sure the jumper cables are in good condition. Turn off the ignition and all electrical accessories on both machines.
2. Position the machine with a good (charged) battery next to but not touching the machine with the dead battery so jumper cables will reach.
3. When making cable connections:
 - Make sure the clamps do not touch anywhere except to intended metal parts,
 - Never connect a positive ("+" or red) terminal to a negative ("-" or black) terminal.
 - Make sure the cables won't get caught in any parts after the engines are started.
4. Connect one end of the first jumper cable to the **positive** terminal on one battery. Connect the other end to the **positive** terminal on the other battery.
5. Connect one end of the other cable to the **negative** terminal of the machine with a good (charged) battery. Make the final connection on the engine of the machine to be started, away from the battery.
6. Start the vehicle with the good battery, then the machine with the discharged battery.
7. Remove the cables in the exact reverse order of installation. When removing each clamp, take care it does not touch any other metal parts while the other end remains attached.

TRUCKLOADER



P/N MP100108



P/N MP100109

SKID MOUNT POWER UNIT

- 1 – Power Unit: Includes Fuel Cell and Battery and Box
- 1 – Discharge Stack Assembly (Stack / Elbow Combination)
- 1 – 7" dia. X 30" Metal Discharge Hose
- 1 – 10' Intake Hose (10" dia.)
- 1 – Intake Nozzle (10" dia.)
- 1 – Intake Nozzle Handle
- 1 – Intake Hose Connector
- 1 – Intake Hose Support Strap (10" dia.)
- 1 – Hose Support Boom, with Chain Guide
- 1 – Assembly Kit (Hardware, 2 – 10" Hose Clamps, Support Chain, Metal Discharge Hose Clamp)
- 1 – Battery (Dry without Acid)
- 1 – Operators Manual and Warranty Registration package
- 1 – Engine Operation Manual

HITCH MOUNT SWING ARM

Same as above with the addition of a 49" x 4" x 4" Swing Arm

The truckloader is intended to be used in conjunction with a truck or trailer mounted debris receptacle to load landscape debris for removal from a work site to storage, dump or processing site. These receptacles or debris bodies or boxes are provided by the user and are the responsibility of the user.

SET UP INSTRUCTIONS

1. Remove outer crating and protective packaging. Unfasten the power unit, discharge stack, and hitch mount swing arm from pallet. **Figure 1**
2. Install Hitch Mount Swing Arm to receiver of vehicle. Mount power unit utilizing the supplied 4 – 1/2" X 1" bolts, washers, and nuts. **Figure 2**

NOTE: Lift points on power unit are for installing or removing power unit from hitch mount / swing arm when overhead winch is available. **Figure 3**

FIGURE 1

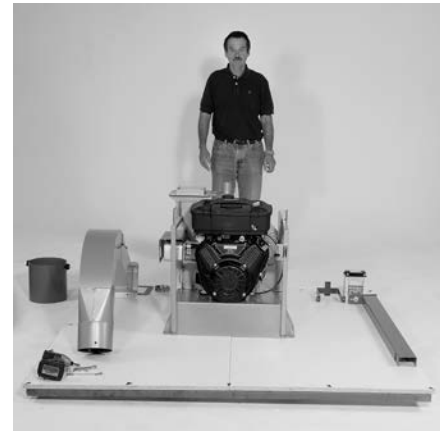


FIGURE 2



FIGURE 3



TRUCKLOADER

3. Attach Discharge Stack to blower housing utilizing 8 – (3/8" X 1 1/4") bolts, 16 flat washers, 8 split washers and 8 nuts. **Figure 4**
 4. Install 7"dia. Metal Hose to discharge stack using metal hose clamp. **Figure 5**
 5. Attach Boom Arm to Boom Mast utilizing 2 – (3/8"-16 X 1 1/4") bolts, washers, and nuts. **Figure 6**
 6. Install Boom Assembly to receiver on rear of discharge stack. **Figure 7**
 7. Attach Boom Chain to Eyelet on End of Boom. **Figure 8**
 8. Attach Support Strap to 10" Intake Hose utilizing 1-(3/8"X2") bolt w/flat washer and nylock nut.
Note: Support Strap Needs to be centered on the Intake Hose. **Figure 9**
 9. Install Handle to Nozzle assembly. Attach Nozzle Assembly to one end of the Intake Hose utilizing 10" Worm Drive Clamp. **Figure 10**
 10. Install Intake Hose Connector to opposite end of Intake Hose utilizing the same size Worm Drive Clamp. **Figure 11**
 11. Attach Boom Chain to Eyelet on the Support Band. **Figure 12**
 12. Install intake hose connector to intake cover. **Figure 13**
- ⚠ WARNING** EYE PROTECTION and GLOVES are **REQUIRED**. Battery Acid Activation should be added in a ventilated area.
13. Service and Install Battery. Install airflow tube to battery and to the drain hole in base of power unit. Install battery to base of power unit and attach battery bracket, utilizing 2- (#12X3/4") self-tap screws **Figure 14**
 14. Attach Red (positive) and Black (negative) cables to the designated terminals. **Figure 15**
 15. Service Engine - See engine manufacture's manual.

Important Note: Don't Stand on Unit.

Warning: Heavy weight. May need assistance installing.

FIGURE 4

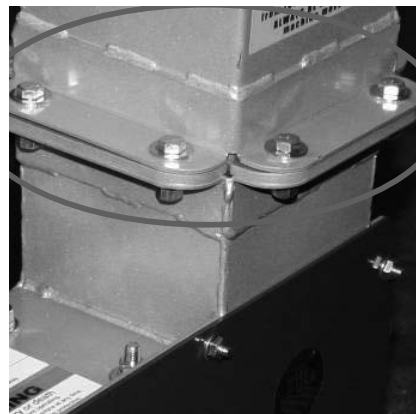


FIGURE 5

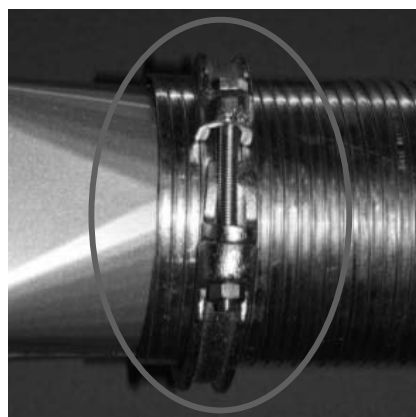


FIGURE 6

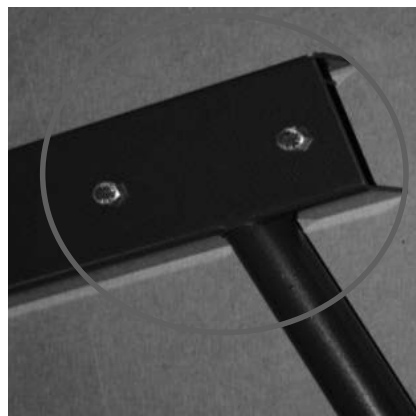


FIGURE 7



FIGURE 8



FIGURE 9

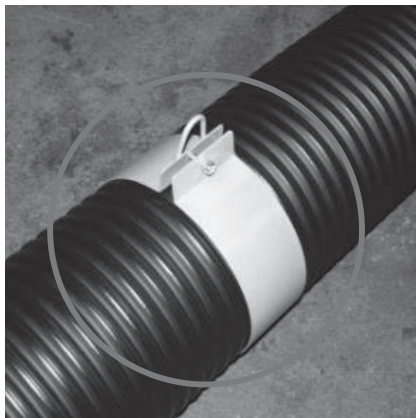


FIGURE 10

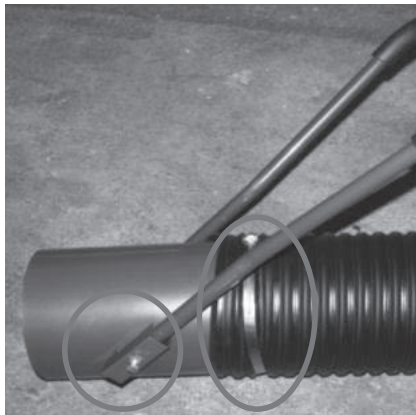


FIGURE 11

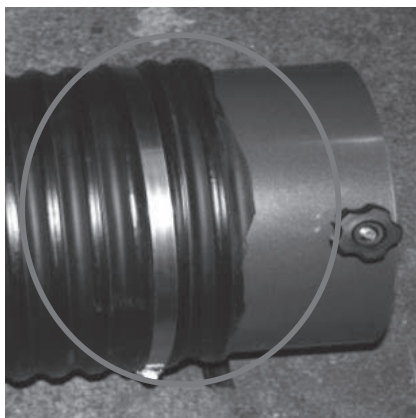


FIGURE 12

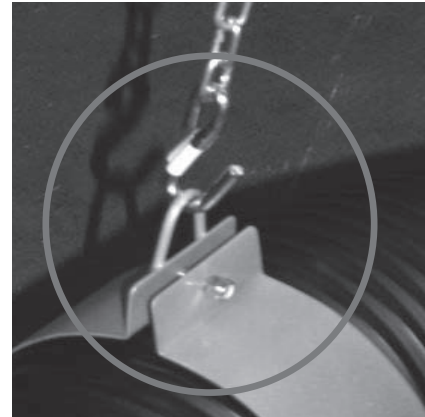


FIGURE 13

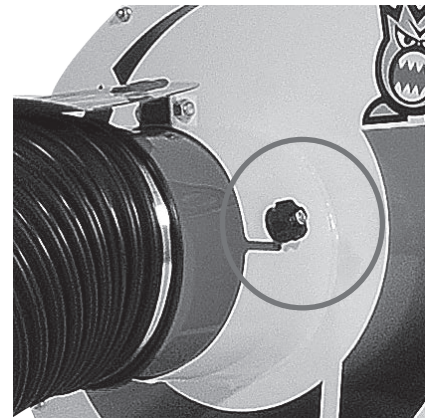


FIGURE 14

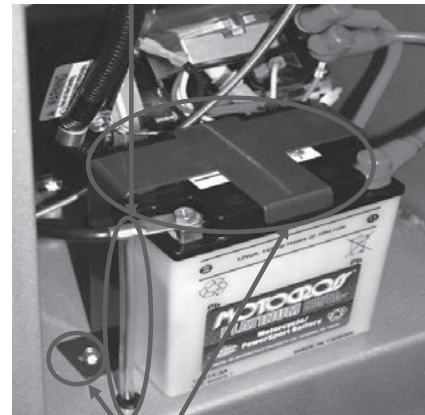
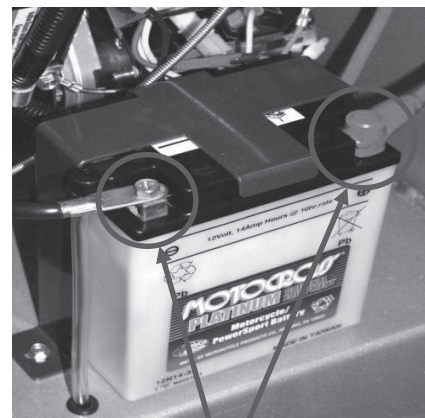


FIGURE 15



TRUCKLOADER

KEY SWITCH (A)

Turn clockwise to "START" position to start engine.
Release key to turn to "RUN" position.
Turn counter-clockwise to "STOP" the engine.

THROTTLE (B)

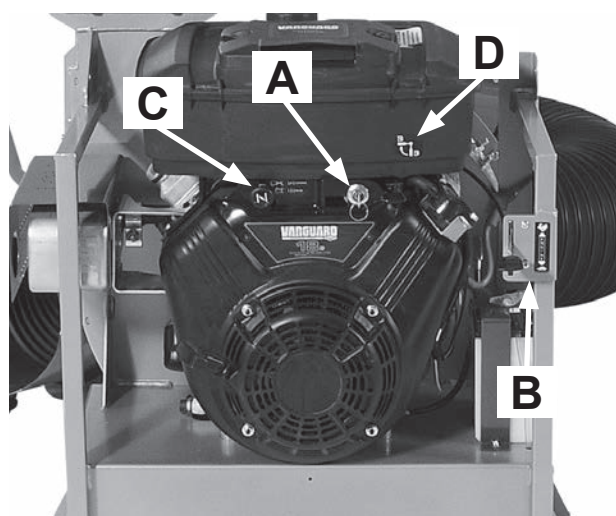
Controls engine speed.

CHOKE (C)

Move to the "CHOKE" position to apply the choke. Move to the "RUN" position to remove the choke.

FUEL SHUT OFF (D)

Rotate to shut off the fuel whenever transporting the machine or during storage. Rotate to allow fuel to flow to engine during operation.



INTENDED USE

This unit is intended for vacuuming leaves, clippings and other similar sized organic material from the ground into a truck or trailer. Large sized or long stringy material will tend to clog.

Vacuuming sand, rocks, and hard litter will shorten the life of this machine and may damage the machine or parts of it.

PRE-OPERATION CHECK LIST (OPERATOR'S RESPONSIBILITY)

- Review and follow all safety rules and safety decal instructions.
- Check that all safety decals are installed and in good condition. Replace if damaged.
- Check to make sure all shields and guards are properly installed and in good condition.
- Make sure the discharge chute and hose are installed.
- Check the hose, discharge chute, liners, and housing for wear. Do not operate if these parts are worn through. Replace or repair before operating.
- Check that all hardware is properly installed and secured.
- Check to be sure engine is free of dirt and debris. Pay particular attention to the cooling fins, governor parts and muffler. Clean air intake screen. Check air cleaner; service if necessary.
- Clean area around the oil fill dipstick. Remove dipstick and check to be sure oil is in operating range (between marks on dipstick). Add oil if necessary but **Do Not Overfill**. See engine manual for oil specifications. Install dipstick assembly firmly until cap bottoms out on tube. Dipstick assembly must always be secured into fill tube when engine is running.
- Inspect material to be vacuumed and remove stones, branches or other hard objects that might damage the machine or cause it to clog.

BEFORE STARTING THE ENGINE

1. Be familiar with the controls, how each functions, and what each operates.
2. Check engine oil level. Add oil if necessary, following the engine manufacturer's recommendations. Refer to engine manual included with literature packet.
3. Check the air cleaner for dirty, loose, or damaged parts. Clean or replace if necessary.
4. Check the air intake and cooling area for dirt or debris and clean as necessary.

Gasoline is extremely flammable and highly explosive under certain conditions. BE SURE to install fuel cap after refueling.

Fill fuel tank with good quality, clean, unleaded regular gasoline to the level recommended by the engine manufacturer.



TO CHECK OR ADD FUEL:

- Use a funnel to avoid spilling.
- Do it outdoors.
- Do not smoke.
- Stop the engine; allow to cool.
- Do not overfill.
- Clean up spilled fuel.



STARTING THE ENGINE

1. Check oil level (Daily).
2. Turn fuel shut off valve to OPEN.
3. Put choke control in "CHOKE" position (Briggs Vanguard only)
4. Move throttle control 1/3 of the way toward high speed position.
5. Turn key to the START position.
6. Let engine warm up. Slowly adjust CHOKE toward RUN position.

OPERATING

This machine has been designed for two methods of vacuuming debris:

- With the handle of the Intake Nozzle in the operator's hands, move the nozzle back and forth in a sweeping motion over the debris
- Rotate Intake Nozzle to lay sideways on the ground. By placing the Nozzle in this position, debris can be raked into the nozzle by an operator.

While large amounts of debris can be vacuumed quickly with this machine, caution must be taken to avoid blocking the airflow into the Nozzle.

STOPPING THE ENGINE

When operation is complete or the unit needs to be checked or a clog needs to be cleared:

1. Move the throttle to SLOW.
2. Turn the key switch to the OFF position.
3. Close fuel valve.
4. Note: Impeller will continue to rotate for several seconds after engine is stopped.

EXCESSIVE VIBRATION

Shut off the engine immediately if abnormal/excessive vibration occurs. Remove spark plug wire. Find the cause of vibration and repair it. Some possible causes for excessive vibration are:

- Damaged impeller
- Loose impeller bolt
- Loose impeller key
- Lodged objects

CLOGS

To prevent clogs, do not overfeed, especially with heavy wet material.

Pay attention to how full the debris receptacle is. Overfilled debris receptacles cause material to back up and get tightly packed in the discharge chute.

REMOVING CLOGS



If a decrease in suction is experienced, there may be a debris blockage in the hose. Often a clogged hose can be cleared by stretching the hose out straight with the engine running. If the hose does not clear, you will need to remove the hose. Before removing the hose or attempting to clear a clog manually:

- STOP the engine. Turn the key switch to the OFF position.
- Wait for the impeller to come to a complete stop.
- Disconnect the spark plug wires so impeller movement cannot accidentally start the engine.

Removing Clogs (continued)

CAUTION SHOULD BE USED WHEN CLEARING DEBRIS FROM INSIDE THE HOUSING. GLOVES SHOULD BE WORN AS SHARP EDGES ON THE IMPELLER OR IN THE DEBRIS MAY BE PRESENT.

Remove the Hose Assembly from the Inlet Flange Assembly. With this removed, open the Inlet Flapper and remove any debris that is clogging the housing.

Remove the Discharge Chute from the Transition Discharge tube's flange. With the Chute removed, inspect the Transition Discharge part of the housing and remove any debris clogging this area.

Reassemble removed parts, reconnect the spark plug wire and resume operation.

NEVER TRANSPORT MACHINE WHILE IT IS RUNNING

SKID MOUNT MACHINE

1. Make sure that engine is turned off.
2. Turn fuel valve to the OFF position.
3. Check to insure that the carabiner chain on nozzle is secured (based on the units mounting provisions.)
4. After use make sure unit is secured.
5. Remove Intake Hose Assembly
6. Remove Boom Assembly.

HITCH MOUNT SWING ARM

1. Check to ensure that the swing arm is in the closed position and the locking bolt is secured and tight.
2. Ensure the safety chain is secured to the vehicle.

DAILY MAINTENANCE

- Inspect the intake hose connector to make sure it is securely fastened to the intake cover assembly
- Inspect the hose, chute, chute liner, and blower housing liner for wear. Replace worn parts or have them repaired.
- Tighten any loose fasteners.

ENGINE OIL

- Check the oil level daily.
- Change after the first day of operation and then according to the engine manual.
- See the engine manual for oil specifications and checking procedure.

ENGINE AIR CLEANER

- Check and clean according to the engine manuals.
- Little Wonder recommends daily inspection and cleaning due to the extreme environment of debris handling.

CLEANING

Keep the area around the muffler and engine recoil cover /cooling air intake free of debris accumulation to prevent fires and keep the engine from overheating. These areas need to be monitored throughout the work day and may need to be cleaned several times daily depending on circumstances.

STORAGE

To prevent possible explosion or ignition of vaporized fuel, do not store equipment with fuel in tank or carburetor in an enclosure or enclosed area with an open flame (for example, a furnace or water heater pilot light.)

Before the equipment is put into storage for any period exceeding 30 days, the following steps should be completed.

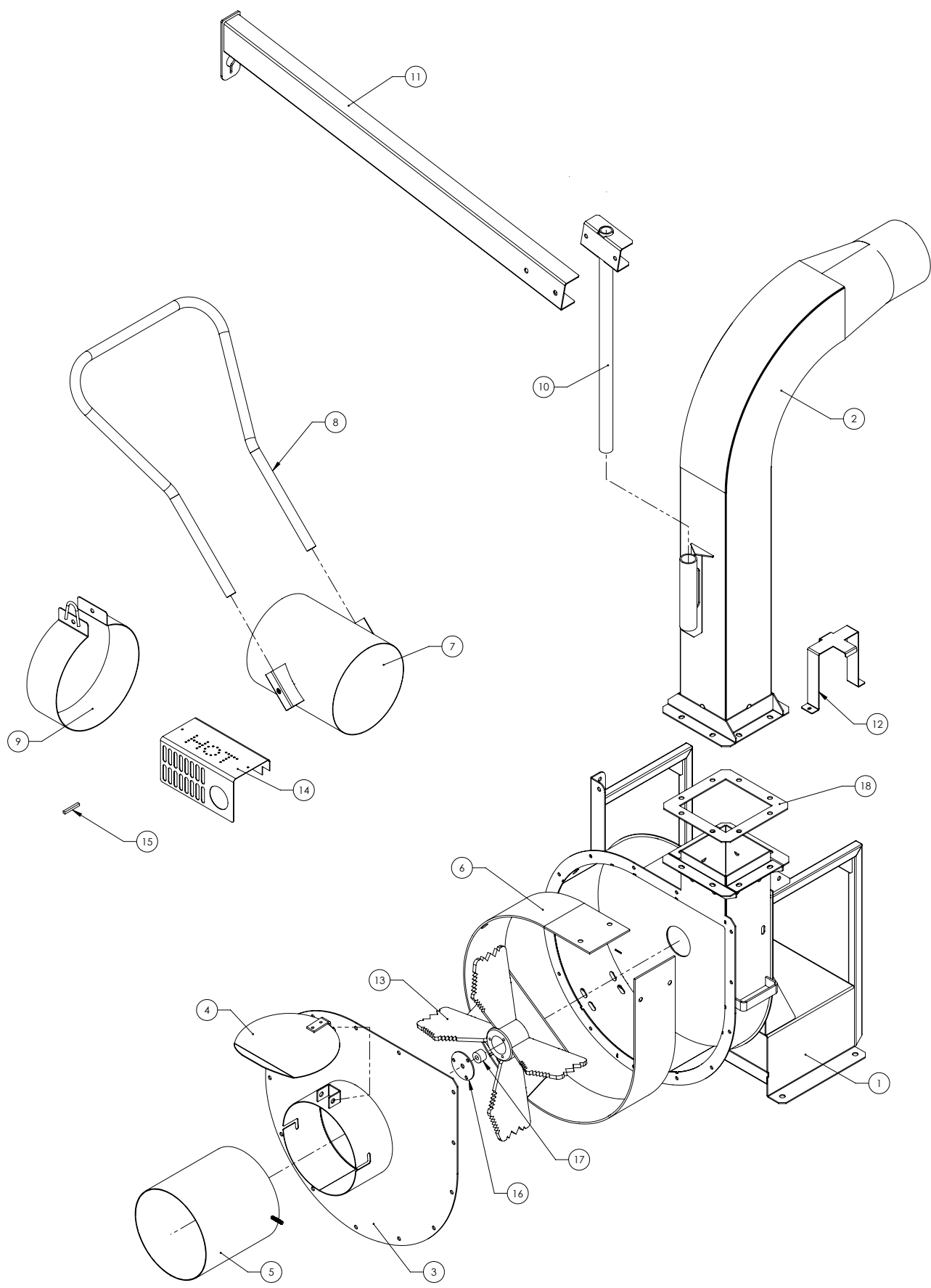
1. Drain all fuel from the fuel tank and the fuel lines. Drained fuel may only be stored for 30 days. If a stabilizer is chosen, follow the manufacturer's recommendation by adding the correct amount of additive for the amount of fuel to be stored. Fill the tank with this clean, fresh gasoline and run the engine for 2 to 3 minutes to get the stabilized fuel into the carburetor.
2. Start the engine and run until all the fuel is used from the carburetor float bowl and the engine stops.
3. While the engine is still warm, drain the crankcase oil and replace with the proper weight oil corresponding to the season the equipment will be used next.

4. Remove the spark plug and squirt a small amount of engine oil into the cylinder. Reinstall the plugs and ground spark plug leads- DO NOT connect the leads to the plugs. Crank the engine two or three revolutions.
5. Store the unit and all of it's components in a clean, dry, well ventilated, non-child accessible, sheltered area that is out of sun light and high ambient temperatures.

To put the equipment into service after an extended period of storage.

1. Check for loose parts and tighten if necessary.
2. Fill the fuel tank and then check the engine oil level. Top off if necessary. See engine manual for details.
3. Start the engine and check for fuel leaks. Repair any leaks before operating the unit.

Model	8183-04-01	8184-04-01
Engine	18HP Vanguard	18HP Vanguard
Displacement cm ³ (cu. in)	479 (29.23)	479 (29.23)
Starter	Electric / Pull Start	Electric / Pull Start
Fuel Capacity	1.5 Gal. EPA (Low Perm)	1.5 Gal. EPA (Low Perm)
Oil Capacity	1.36 – 1.42 Liter	1.36 – 1.42 Liter
Vacuum Hose	10"dia.x 10'	10"dia.x 10'
Discharge	7 inch	7 inch
Class Requirements		Class 3
Impeller	All Models: 4 Blade 3/8" w/ Steel Taper Locking Hub	
Dimensions Shipped	Skid Mount: 57"L X 46"W X 37"H Hitch Mount: 57"L X 46"W X 37"H	
Dimensions Assembled	Skid Mount: 40"L X 37"W X 98"H Hitch Mount: 84"L X 55"W X 112"H	
Dry Weight	500 lbs.	620 lbs.



TRUCKLOADER

ITEM	PART NO.	DESCRIPTION	QTY.
1	MP020035.31	Housing Assembly	1
2	MP020036.31	Dishcharge Stack	1
3	MP020037.10	Intake Cover Assembly	1
4	MP020038.17	Door, Intake Cover	1
5	MP020039.17	Intake Hose Connector	1
6	MP020034	18HP Liner Kit	1
7	MP020040.17	Nozzle Assembly	1
8	MP020041.17	Handle, Pick-Up Tube	1
9	MP020042.17	Strap, 11.25" Intake Hose	1
10	MP020043.17	Boom Mast	1
11	MP020044.17	Boom Arm	1
12	MP020045.32	Battery Hold-Down	1
13	MP020028	Impeller Assembly	1
14	MP020103.32	Exhaust Cover	1
15	MP010050	.25 Sq X 2" Key	1
16	MP020046	Cover Plate, Impeller Hub	1
17	MP010020	Shaft Spacer, 18HP	1
18	MP010067	Gasket, Discharge Chute	1

Optional Accessories:

Hitch Mount:

PN# MPE-020002 (18HP / 14HP – Skid)

Exhaust Stack Extension 24":

PN# MPE- 020116 (18HP)



2 YEAR LIMITED SERVICE AND WARRANTY POLICY FOR LITTLE WONDER TRUCKLOADERS

All LITTLE WONDER TRUCKLOADERS are warranted against defects in material and workmanship for a period of two (2) years from the date of purchase, under the following terms and conditions.

LITTLE WONDER will repair or replace, at its option, any part or parts of the product found to be defective in material or workmanship during the warranty period. Warranty repairs and replacements will be made without charge for parts or labor. All parts replaced under warranty will be considered as part of the original product, and any warranty on the replaced parts will expire coincident with the original product warranty. If you think your LITTLE WONDER TRUCKLOADER is defective in material or workmanship, you must return it to a registered dealer with a valid sales receipt or to our factory at 1028 Street Rd., Southampton, PA 18966. Transportation charges to ship your product to us or a registered dealer must be borne by you.

Engines for all gasoline powered products are warranted separately by the engine manufacturer. Therefore, there are no warranties made, expressed or implied, for engines for gasoline powered products by LITTLE WONDER.

LITTLE WONDER assumes no responsibility in the event that the product was not assembled or used in compliance with any assembly, care, safety or operating instructions contained in the Owner's Manual or information accompanying the product. This limited warranty does not cover damages or defects due to normal wear and tear, lack of reasonable and proper maintenance, failure to follow operating instructions or Owner's Manual, misuse, lack of proper storage or accidents, nor does it cover routine maintenance parts and service. This limited warranty does not cover any defects due to repairs or alterations made to the product made by anyone other than LITTLE WONDER or its registered dealers.

You must maintain your LITTLE WONDER TRUCKLOADER by following the maintenance procedures described in the owner's manual. Such routine maintenance, whether performed by you or a registered dealer, is at your expense.

LITTLE WONDER MAKES NO EXPRESS OR IMPLIED WARRANTIES REPRESENTATIONS OR PROMISES EXCEPT THOSE CONTAINED HEREIN. THERE ARE NO OTHER WARRANTIES, INCLUDING WARRANTIES OF MERCHANTABILITY AND FITNESS FOR A PARTICULAR PURPOSE. ALL WARRANTIES OTHER THAN THE EXPRESS WARRANTY SET FORTH ABOVE ARE SPECIFICALLY DISCLAIMED. THE DURATION OF ANY IMPLIED WARRANTY, INCLUDING MERCHANTABILITY AND FITNESS FOR A PARTICULAR PURPOSE, IS LIMITED TO THE DURATION OF THIS WRITTEN LIMITED WARRANTY. LITTLE WONDER DISCLAIMS ALL LIABILITY FOR INDIRECT, INCIDENTAL AND/OR CONSEQUENTIAL DAMAGES IN CONNECTION WITH THE USE OF THE LITTLE WONDER TRUCKLOADER PRODUCTS COVERED BY THIS WARRANTY. SOME STATES DO NOT ALLOW LIMITATIONS ON HOW LONG AN IMPLIED WARRANTY LASTS AND/OR DO NOT ALLOW THE EXCLUSION OR LIMITATION OF INCIDENTAL OR CONSEQUENTIAL DAMAGES, SO THAT ABOVE LIMITATIONS AND EXCLUSIONS MAY NOT APPLY TO YOU. THIS WARRANTY GIVES YOU SPECIFIC LEGAL RIGHTS, AND YOU MAY ALSO HAVE OTHER RIGHTS WHICH VARY FROM STATE TO STATE

LITTLE WONDER®

**SCHILLER GROUNDS CARE, INC.
1028 STREET ROAD, P.O. BOX 38
SOUTHAMPTON, PA 18966**

PHONE 877-596-6337 • FAX 215-357-8045

www.littlewonder.com