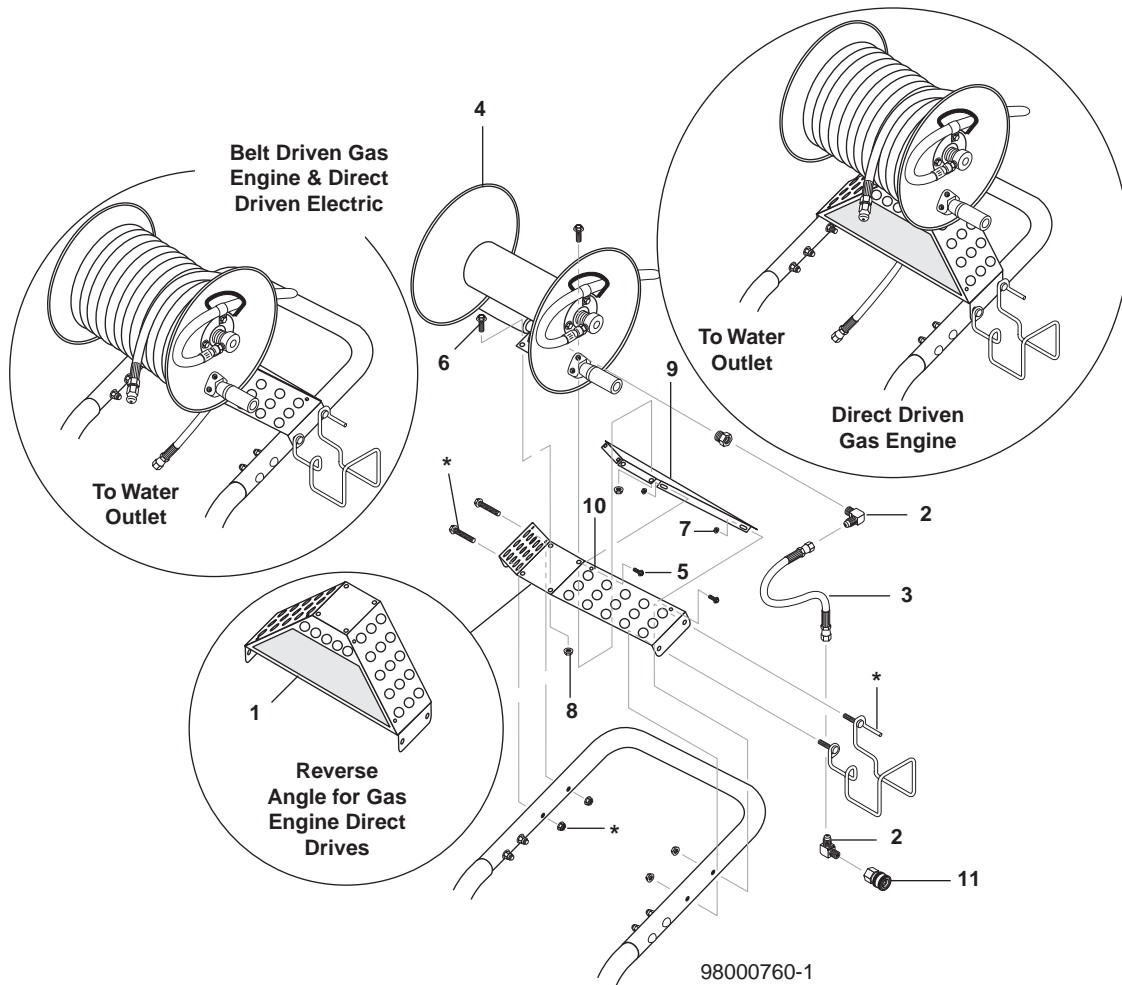


# HOSE REEL INSTALLATION INSTRUCTIONS

Kits #9.801-025.0, #9.801-026.0, #9.801-027.0

Kits #8.904-103.0, #8.904-105.0, #8.904-107.0



\* - Existing machine hardware.

ITEM	PART NO.	DESCRIPTION	QTY
1	9.800-009.0	Label, Gas Engine, Instr./Warning, Hose Reel Plate	1
	9.800-093.0	Label, Electric, Instr./Warning, Hose Reel Plate	1
2	9.802-039.0	Elbow, 1/2" JIC, 3/8", 90°	2
3	9.802-241.0	Hose, 3/8" x 25", 2 Wire, Pressure Loop	1
4	9.804-067.0	Hose Reel, 3/8 x 100', E-Zee w/Pin Lock	1
5	9.802-754.0	Screw, 1/4" x 1/2" HH NC, Whiz Loc	4
6	9.802-767.0	Screw, 3/8" x 3/4" HH NC, Whiz Loc	4
7	9.802-775.0	Nut, 1/2" Flange, ZN	4
8	9.802-781.0	Nut, 3/8", Flange Whiz Loc, NC	4
9	8.912-078.0	Stabilizer Plate, CWW Hose Reel Bracket, Red	1
	9.803-116.0	Stabilizer Plate, CWW Hose Reel Bracket, Black	1
10	8.912-079.0	Mount, CWW Hose Reel Bracket, Red	1
	9.803-117.0	Mount, CWW Hose Reel Bracket, Wrinkle Black	1
11	9.802-166.0	Coupler, 3/8" Female, Brass	1