

# ITT SERIES

MORE HEAT FOR LESS MONEY

**infra**save  
radiant heaters

Features	Benefits
Two firing rates	Full fire on cold days Reduced fire on "cool" days
Ceramic burner	Extended flame length More uniform heating Increased energy efficiency
End caps	Improved radiant output due to increased heat entrapment
Fold-down burner housing	Easy servicing even when heater is cycled on

Model	Design
ITT	In-line tube and reflectors in ten-foot sections
ITTU	Parallel tubes under single reflector, vaned turning box
ITT & ITTU	Special high emissivity coating from second tube to end (175 & 200: 3rd tube to end)

## ITT Series Two Stage Tube Heater

### InfraSave's expanded line of top performing infrared tube heaters

Get the perfect balance of performance, economy and comfort with InfraSave ITT Two Stage tube heaters. With dual firing rate capability, your heating system will provide improved comfort levels concurrent with outside temperature variations. The ITT includes many features of the InfraSave premier IQ series tube heaters, and a ten year warranty on the ceramic burner, yet it is priced to meet your budget needs.



**ITT Two Stage Series**  
improves comfort and  
outperforms the competition

#### Standard ITT 110/75-40 Parts

**NEW!** A flexible standard gas connector is now included with the burner kit.

- 1-Two stage burner assembly
- 1-10' aluminized tube with flange
- 3-10' steel tubes (with emissive coating)
- 4-10' reflectors
- 3-Coupling kits (heavy-duty clamps)
- 2-Reflector end caps
- 8-Wire tube/reflector hangers
- 1-Aluminized steel turbulator

[factory installed]

#### Optional Accessories

- Two stage 24V thermostat
- 90 degree elbow kit
- 4" or 6" roof walls flue vent terminal
- 4" x 4" x 6" flue vent TEE
- Couplings for TEE
- Side reflector extensions
- Fresh air inlet adapter
- Fresh air inlet vent cap

Don't settle for an underperforming infrared heater. InfraSave provides more heat for less money.

## Luminous Heater Series



## Tube Heater Series

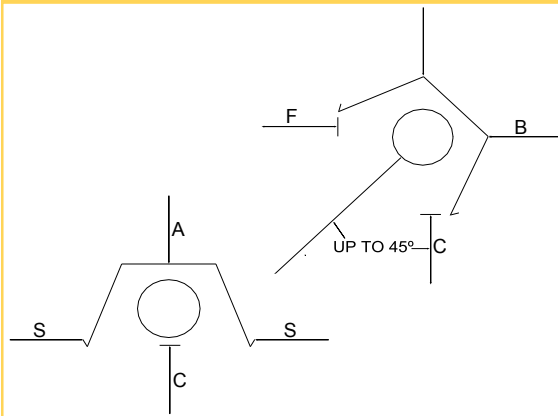


## Patio Heater Series



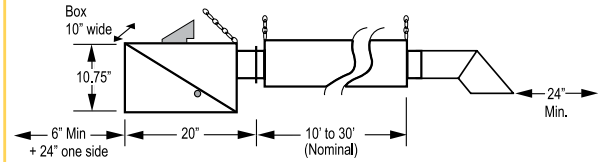
# ITT[U] Specifications

## Clearances to Combustibles



MODEL	SUSPENDED HORIZONTALLY			SUSPENDED AT AN ANGLE UP TO 45°			
	A	B	C	D	E	F	G
ITT(U) 200	14"	44"	76"	13"	6"	74"	70"
ITT(U) 175	13"	42"	74"	12"	6"	72"	68"
ITT(U) 155	11"	34"	64"	10"	4"	50"	64"
ITT(U) 130	10"	32"	60"	9"	3"	40"	56"
ITT(U) 110	9"	30"	60"	9"	3"	36"	54"
ITT 100	11"	32"	68"	10"	4"	57"	68"
ITT(U) 80	7"	24"	42"	7"	2"	31"	38"
ITT(U) 60	7"	20"	34"	7"	2"	25"	34"
ITT(U) 45	7"	16"	32"	7"	2"	29"	32"

## Dimensions and Specifications



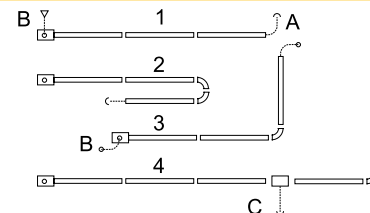
MODEL	INPUT BTU/HR U.S.A.* SEA LEVEL TO 2,000' CANADA*: SEA LEVEL TO 4,500'	AVAILABLE LENGTH				
		20'	30'	40'	50'	60'
ITT-200/140**	200,000/140,000				■	■
ITT-175/125**	175,000/125,000				■	■
ITT-155/110	155,000/110,000			■	■	
ITT-130/90	130,000/90,000		■	■		
ITT-110-75	110,000/75,000		■	■		
ITT-80/60	80,000/60,000	■	■			
Heater Length		21'4"	31'	40'8"	50'4"	60'
Shipping Weight [LBS.]		150	200	240	315	360

MODEL	INPUT BTU/HR U.S.A.* SEA LEVEL TO 2,000' CANADA*: SEA LEVEL TO 4,500'	AVAILABLE LENGTH			
		10'	15'	20'	30'
ITTU-200/140**	200,000/140,000				■
ITTU-175/125**	175,000/125,000				■
ITTU-155/110	155,000/110,000			■	■
ITTU-130/90	130,000/90,000		■	■	
ITTU-110-75	110,000/75,000		■	■	
ITTU-80/60	80,000/60,000	■	■		
Heater Length		12'9"	17'5"	22'3"	31'11"
Shipping Weight [LBS.]		160	250	250	370

\* High Altitude: De-rate heater 4% for each additional 1,000 Ft. of elevation  
\*\* ITT[U] 200/140 & 175/125 available in natural gas only

Gas pressure	Line minimum:	5" W.C. NG	11" W.C. LP
	Line maximum:	14" W.C. NG	14" W.C. LP
	Manifold:	3.5" W.C. NG	10" W.C. LP
Gas inlet	1/2"		
Flue & air vent	4"		
Electrical	120V, 60 Hz, 1.5 AMPS		

## Flexible Layout



## System Configuration

1. Straight line
2. "U" tube with two 90° elbow kits
3. "L" tube with 90° elbow kit
4. Common 6" TEE flue vent

## Venting Options

- A. 4" flue vent through wall or roof
- B. 4" intake air from wall or roof
- C. 6" common vent through wall or roof

Distributor info: