

2016

Handheld Accessory Catalog

PROFESSIONAL USERS





CONTENTS

Protective Clothing	3
Chainsaw Accessories	10
Axes and Hand Tools	18
Oils and Fuels	22
Trimmer Accessories	24

CLOTHING, ACCESSORIES AND TOOLS FOR SAFER, MORE CONVENIENT WORK

Good protective equipment must withstand demanding conditions and provide the required protection. That's why we use nothing but high-quality materials. Each job comes with different requirements. Our range of protective clothing takes into consideration every type of work. In fact our extensive range of safety clothing, offering the latest innovations in design and materials, will provide you with the level of protection and comfort you need to get the job done.



OUR PROTECTIVE CLOTHING FEATURES:

- Multiple levels of protection
- Lightweight and efficient layering design
- Complete freedom of movement
- Well thought-through designs



EVERY TOOL HAS A JOB TO DO AND THESE WILL DO IT WELL

Being the world's leading supplier of outdoor power products does not mean we forget about the smaller tools and accessories needed to complete the job. Every tool in our portfolio of axes, hand saws, lifting hooks, breaking bars and other things has been carefully selected to ensure that you have everything you'll need to do your work well.



MADE TO PERFORM – TESTED TO PERFECTION

Husqvarna oils are optimized according to the development of our engines. And you can always trust in us providing a wide enough range of oils to suit your conditions. We use synthetic and highly-refined mineral oils that with the specially developed additives will bring perfect lubrication, seizure protection and cleaner engines.

HEAD PROTECTION

NEW



TECHNICAL FOREST HELMET

PART NO. 588 64 60-01

- Comfortable and lightweight helmet designed specifically for loggers
- One-handed ratchet system allows for easy size adjustment (personal fit)
- Adjustable 6 point suspension
- Free-view visor for optimal visibility
- Mesh ventilation provides comfort for long hours
- UV Expiry indicator allows user to track helmet condition and know when to replace it
- Lightweight, minimizing neck fatigue, pain, injury
- Helmet meets ANSI/ISEA Z89.1-2009 Type 1, Class C
- Hearing protection meets ANSI S3.19-1974, 24 dB NRR

PRO FOREST HELMET WITH RATCHET

PART NO. 576 23 54-01



- UV protected orange hard hat
- Adjustable 6 point suspension with ratchet system
- 25 dB (A) NRR hearing protectors
- Face visor, rain shield and rain neck protector
- Hi-Viz orange color for improved visibility
- Meets ANSI Z89.1-2003 Class G-E standards
- Ratchet system

PRO FOREST HELMET

PART NO. 577 76 46-01



- UV protected orange hard hat
- Adjustable 6 point suspension system
- 25 dB (A) NRR hearing protectors
- Face visor, rain shield and rain neck protector
- New Hi-Viz orange color for improved visibility
- Meets ANSI Z89.1-2003 Class G-E standards

ARBORIST HELMET BY PETZL®

PART NO. 531 30 94-71



- Petzl's Vertex Best Work/Rescue Series helmet in Husqvarna Orange
- Polycarbonate shell with side slots for hearing protection & face shield
- 4 point suspension system with a replaceable thick foam headband
- Headband adjusts From 20.8" to 24.8" (53 cm to 63 cm)
- Meets ANSI Z89.1-2003 Type 1 Class E standards

PRO FOREST HARD HAT

PART NO. 575 55 46-01



- UV protected orange hard hat with 6 point adjustable suspension
- Hi-Viz orange color for improved visibility
- Meets ANSI Z89.1-1997 Class G-E standards

ARBORIST TECHNICAL HELMET BY PETZL®

PART NO. 578 09 23-01



- Lightweight orange helmet with ventilation
- Designed for professional arborists
- Approved for working off the ground
- UltraVision visor for improved visibility
- Adjustable helmet system centers helmet on the head via patented wheel adjustments
- 25 dB (A) NRR hearing protectors
- Meets ANSI Z89.1-2009 Type 1 Class C standards

FACE, EYE & HEARING PROTECTION



FACE/HEARING PROTECTION

PART NO. 505 66 53-48

- Plexiglas® visor with headband
- 25 dB(A) NRR hearing protectors



FACE/HEARING PROTECTION

PART NO. 505 66 53-58

- Mesh visor with headband hearing protectors – 25 dB(A) NRR



PROFESSIONAL HEADBAND HEARING PROTECTORS (PADDED)

PART NO. 531 30 00-89

- Lightweight, flexible padded headband
- 25 dB(A) NRR Hearing Protectors

HAND GEAR



FUNCTIONAL XP® PRO GLOVES

- Functional XP® Professional glove
- Synthetic leather palm
- Spandex fabric back; ventilated finger walls
- Reinforced rubberized grip pads on palm and fingertips
- Heavy duty elastic cuff with velcro closure for a secure, adjustable fit
- High visibility colors, reflective Crown H, reflective piping



FUNCTIONAL SAW PROTECTION

- Cut resistant material in left hand
- Spandex® fabric back
- Goatskin palm
- High visibility colors, reflective Crown H



FUNCTIONAL WINTER GLOVES

- Great for cold weather; Thinsulate™ 40 grams
- Spandex® fabric
- High visibility, reflective Crown H
- Excellent strength
- Water resistant material



TECHNICAL GLOVES

- Excellent strength/great quality
- Spandex® fabric back
- Goatskin palm
- High visibility colors, reflective Crown H, reflective piping
- HD velcro/elastic cuff for secure adjustable fit

DESCRIPTION	SIZE	PART NUMBER
Functional XP® Pro Gloves	Small	584 95 51-01
Functional XP® Pro Gloves	Medium	584 95 51-02
Functional XP® Pro Gloves	Large	584 95 51-03
Functional XP® Pro Gloves	X-Large	584 95 51-04
Functional Saw Protection	Medium	579 38 02-09
Functional Saw Protection	Large	579 38 02-10
Functional Saw Protection	X-Large	579 38 02-12
Functional Winter Gloves	Large	579 38 03-10
Functional Winter Gloves	X-Large	579 38 03-12
Technical Gloves	Medium	579 38 04-09
Technical Gloves	Large	579 38 04-10
Technical Gloves	X-Large	579 38 04-12



NEW PROTECTIVE GLASSES

Introducing the new line of lightweight and comfortable Husqvarna protective glasses designed for all-day wear. The polycarbonate lens provides better resistance to shattering, scratching and features 99.9% UV protection to keep you working safely and efficiently.

All styles meet ANSI Standard Z87.1.



SPORT MODEL SHOWN

CLASSIC

PART NO. 501 23 45-13

- Dielectric design with extended curved lens protection
- Dual-mold rubber temples and adjustable rubber nosepiece
- Frame Color – Black
- Lens Color – Indoor/Outdoor



SPORT

PART NO. 501 23 45-08

- Half frame style for unobstructed visibility
- Soft rubber temples and nosepiece
- Frame Color – Silver with orange temple grips
- Lens Color – Smoke

FLEX

PART NO. 501 23 45-05

- Vented rubber nosepiece for breathability
- Dual-mold rubber temple grips for better stability
- Frame Color – Crystal Brown
- Lens Color – HD Brown Mirror



TORQUE

PART NO. 501 23 45-09

- Half frame style for unobstructed visibility
- Soft rubber temples and nosepiece
- Frame Color – Black
- Lens Color – Smoke



SAVANNAH

PART NO. 501 23 45-10

- Half frame style for unobstructed visibility
- Soft rubber temples and nosepiece
- Frame Color – Camo
- Lens Color – Bronze



REVOLUTION

PART NO. 501 23 45-14

- Sleek, lightweight, full frame design
- Soft rubber temples and nosepiece
- Frame Color – Pearl White
- Lens Color – HD Brown Mirror



NEW PROTECTIVE GLASSES (CONT'D)

LEGACY

PART NO. 501 23 45-02



- Sleek modern full frame design for added protection
- Dual-mold rubber temple grips for better stability
- Frame Color – Husqvarna Orange and Gray
- Lens Color – Silver Mirror

BLACK DIAMOND

PART NO. 501 23 45-03



- Sleek modern full frame design for added protection
- Dual-mold rubber temple grips for better stability
- Frame Color – Black
- Lens Color – HD Blue Mirror

WOODLAND

PART NO. 501 23 45-04



- Sleek modern full frame design for added protection
- Dual-mold rubber temple grips for better stability
- Frame Color – Camo
- Lens Color – Smoke

CLEAR CUT

PART NO. 501 23 45-07



- Adjustable rubber nosepiece for added comfort
- Dual-mold rubber temple grips for better stability
- Frame Color – Husqvarna Gray with orange temple grips
- Lens Color – Silver Mirror

FORTRESS

PART NO. 501 23 45-01



- EVA foam-lined frame protects against dust and debris
- Frame Color – Crystal Black
- Lens Color – Smoke

FLEX – POLARIZED

PART NO. 501 23 45-06



- Vented rubber nosepiece for breathability
- Dual-mold rubber temple grips for better stability
- Polarized lens eliminates reflective glare for reduced eyestrain and enhanced view
- Frame Color – Crystal Black / Lens Color – Smoke – Polarized

FREESTYLE – WHITE

COMING SOON



- Sleek, lightweight, full frame with wide temples
- Custom logo design for added style
- Frame color – Pearl White
- Lens Color – Silver Mirror (not shown)

FREESTYLE – BLACK

COMING SOON



- Sleek, lightweight, full frame with wide temples
- Custom logo design for added style
- Frame color – Matte Black
- Lens Color – Fire Mirror (not shown)

BAGS AND BACKPACKS



HUSQVARNA GEAR BAG

Heavy-duty Cordura™ gear bag. Rugged construction with plenty of room for all of your personal protective equipment and miscellaneous items. Convenient detachable shoulder strap.

PART NO. 576 85 95-01



HUSQVARNA BACKPACK

Structured all-around backpack that keeps its shape even if not entirely filled. An opening on the side makes the content visible and easy to reach. It is also equipped with extra pockets, a "hidden rain coat" for rain protection and an opening for ear phones and MP3 players. The wide padded shoulder straps make the bag comfortable and easy to manage.

PART NO. 576 85 92-01

COMING
SOON

NEW PROTECTIVE CLOTHING



TECHNICAL JACKET "HI-VIZ" | SIZES: S, M, L, XL, XXL

Lightweight, ventilated and safe, Husqvarna's new Technical jacket is designed to meet the needs of many professional jobs. With 4-way stretch, Hi-Viz material and many gear pockets the new Technical jacket is a must-have for outdoor tree care professionals.

- 4-way stretch material and pre-bent arms for optimum movement
- Light weight design for comfort through long working days
- Reflective tape and logos, Hi-Viz orange for high visibility
- True-fit sizing
- Reinforcement with Cordura™ on elbows
- Ventilation areas (underarms and on back) for breathability
- Front chest pockets for additional versatility
- Durable material to hold up in various conditions
- Logger and Arborist tested and approved

TECHNICAL PANTS "HI-VIZ"



TECHNICAL PANTS



Husqvarna protective pants have been completely redesigned, taking into consideration all customer needs including weight, temperature, fit, convenience and most importantly, safety. Our Technical Pants are setting a new standard for Husqvarna protective pants and offer many features and benefits any chainsaw user will appreciate.

- 4-way stretch material and pre-bent knees for optimum movement
- Durable material to hold up in various conditions
- Ventilation areas (legs, pockets) for breathability
- Light weight design for all-day comfort
- Reflective tape and Husqvarna logo, Hi-Viz orange for high visibility
- Phone & Gear pockets for additional versatility
- Logger and Arborist tested and approved
- Certified chainsaw protective pants
- Reinforced knees using Cordura™
- Cinch holes on leg cuffs for tying to boots
- True-fit sizing



These pants are tested in accordance with ASTM F1897 (US) and CAN/BNQ 1923-450-M91 (Canada) for leg protection for chainsaw users

WAIST SIZES: 28-30", 32-34", 36-38", 40-42", 44-46"; INSEAM: 32"



CLASSIC PANTS | WAIST SIZES: 28-30", 32-34", 36-38", 40-42", 44-46"; INSEAM: 32"

Husqvarna protective pants have been completely redesigned, taking into consideration all customer needs including weight, temperature, fit, convenience and most importantly, safety. Husqvarna's new Classic pants offer improved comfort and quality while ensuring the safety of the user.

- Durable material to hold up in various conditions
- Ventilation on back of legs for breathability
- Light-weight design for all day comfort
- Reflective Husqvarna logo for high visibility
- Reinforced knees
- Certified chainsaw protective pants
- True-fit sizing



These pants are tested in accordance with ASTM F1897 (US) and CAN/BNQ 1923-450-M91 (Canada) for leg protection for chainsaw users



FUNCTIONAL APRON CHAP

5 Layer Frontal Apron Chap made from 600 Denier Polyester with PVC Coating with TEK WARP PROTECTIVE LAYERS

- Felling wedge pocket
- Acetal Delrin® buckles
- Adjustable waist size up to 42" (overall length is from waist to ankle)
- Meets ASTM F1897, ANSI Z133.1; UL® certified
- Meets OSHA regulation 1910-266

PART NO. 587 16 07-02 | 36"- 38" BLACK / GRAY
PART NO. 587 16 07-03 | 40"- 42" BLACK / GRAY



TECHNICAL APRON WRAP CHAP

5 Layer Apron Wrap Chap made with 1000 Denier Polyester with PVC Coating with TEK WARP PROTECTIVE LAYERS

- Felling wedge and gear pocket
- Acetal Delrin® buckles
- Adjustable waist size up to 42" (overall length is from waist to ankle)
- Meets ASTM F1897, ANSI Z133.1; UL® certified
- Meets OSHA regulation 1910-266

PART NO. 587 16 07-04 | 36"- 38" ORANGE/GRAY
PART NO. 587 16 07-05 | 40"- 42" ORANGE/GRAY



TECHNICAL PRO ZIPPER APRON WRAP CHAP

5 Layer Apron Wrap Chap made with 600 Denier Polyester with PVC Coating with TEK WARP PROTECTIVE LAYERS

- Felling wedge pocket
- Acetal Delrin® buckle waist strap
- Calf wrap zips and secured with velcro
- Adjustable waist size up to 42" (overall length is from waist to ankle)
- Meets ASTM F1897, ANSI Z133.1; UL® certified
- Meets OSHA regulation 1910-266

PART NO. 585 50 59-01 | 36"- 38" ORANGE
PART NO. 585 50 59-02 | 40"- 42" ORANGE

RUBBER LOGGER'S BOOTS AND LINERS

Chainsaw resistant, meets OSHA Regulation 1910.266. Natural rubber with cotton pile lining, 4 layer insole, ankle-guard and heel grip. Steel toe meets ANSI and CSA standards. ANSI Z41-1999 I/75 C/75. Waterproof. Oil-resistant sole. Optional liners and caulks available. U.S. sizes are listed in a range due to conversion from European sizes. Order 1 U.S. full size larger if using a felt liner. The U.S. sizes stamped on the inside of the boot may not match the shoe size conversions in the information shown.



PART NUMBER	U.S./EURO SIZE	BOOT LINER
544 02 79-41	8.5 / 41	S
544 02 79-42	9 / 42	M
544 02 79-43	10 / 43	M
544 02 79-44	10.5 / 44	L
544 02 79-45	11.5 / 45	L
544 02 79-46	12 / 46	XL
544 02 79-47	13 / 47	XL
544 02 79-48	14 / 48	XL
544 02 79-50	15.5 / 50	N/A



Felt liner for the Rubber Logging Boots. Reinforced heel with open front. Helps keep your feet warm and dry for longer time periods. Actual product may vary slightly from picture.

PART NUMBER	SIZE	PART NUMBER	SIZE
605 00 02-15	Small	605 00 02-17	Large
605 00 02-16	Medium	605 00 02-18	X-Large

Per OSHA Regulation 1910-26, the employer must ensure that each employee wears foot protection when operating a chainsaw. The employer is not required to purchase the boots for the employee. The boot must be constructed with cut-resistant material, waterproof or water repellant, and cover and provide support to the ankle.



PROTECTIVE POWERKIT™ – PROFESSIONAL

Everything needed to outfit a professional chainsaw user in a profiled sales box with handle. Just pick up the box and go.

Consists of 1 of each of the following:

- Pro Forest Hi-Viz Helmet
- Husqvarna Technical Apron Wrap Chap
- Husqvarna Clip Suspenders
- Functional Saw Protection Gloves (Large)
- Clear X Protective Glasses
- Protective Glasses Lanyard

PART NO. 588 10 05-03



PROTECTIVE POWERKIT™ – LANDOWNER (PROSUMER)

Everything needed to outfit a Landowner (Demanding Consumer) chainsaw user in a profiled sales box with handle. Just pick up the box and go.

Consists of 1 of each of the following:

- Pro Forest Hi-Viz Helmet
- Husqvarna Functional Apron Chap
- Husqvarna Clip Suspenders
- Xtreme Duty Work Gloves (Large)
- Clear X Protective Glasses
- Protective Glasses Lanyard

PART NO. 588 10 05-02



SUSPENDERS

2" Heavy-duty cotton material specially woven to hold up to constant stretching. Husqvarna branded with a crack-resistant latex. All Husqvarna Safety Pants are made with buttons for the button hole suspenders. Use the clip-on suspenders for your chaps or pants.

PART NO. 605 00 10-55 CLIP (BLUE)

PART NO. 505 61 85-00 CLIP (ORANGE)

PART NO. 605 00 10-56 BUTTON (BLUE)

PART NO. 505 61 85-10 BUTTON (ORANGE)

SAFETY STANDARDS & WARRANTY



All Husqvarna protective chaps and pants are UL Classified in accordance with ASTM F1414-99 Standard Test Method for Measurement of Cut Resistance, and ASTM F1897 Standard Specification for Leg Protection for Chainsaw Users. The UL classification meets or exceeds OSHA Regulation 1910.266 for chainsaw users and the ANSI Z133.1 Standards for Arboricultural Operations.

ASTM F1414

The current US Standard which explains the testing procedures used to test chainsaw leg protection on a Pass/Fail basis is based on a 2750 FPM (feet per minute) minimum threshold stopping speed.

ASTM F1897

The current US Standard which explains the placement of the protective pad in the pant or chap. While requiring a 2750 FPM (feet per minute) minimum threshold stopping speed, it is also required that the protective pad shall cover at least 180 degrees across the front of each leg plus an additional 4 inches to the left side of both legs. The protective pad must also cover from the crotch to the top of the boot, overlapping it by at least 2 inches.

Protective Apparel Warranty

Protective apparel warranty is 90 days from the date of the customer's original purchase for defects in material and workmanship. Normal wear, tear, or abuse is not covered under warranty. Product must be returned to Charlotte with a warranty claim form. All care and maintenance instructions must be followed as stated on the care label of each garment.

CHAINSAW ACCESSORIES



TRANSPORTATION GEAR



POWERBOX® CARRYING CASE

Husqvarna Orange, stackable and holds Husqvarna's filing equipment, filing vise, scrench, spark plug, 2-Stroke oil, Bar & Chain oil and Operator's Manual. HDPE (High Density Polyethylene) double wall construction. "Husky leash" system for a secure fit and to protect the saw. Comes with an 18" to 20" scabbard. Fits all Husqvarna saws from the 136 up to and including the 372XP and 576XP.

PART NO. 100 00 01-07

HUSQVARNA® CHAINSAW BAG

Heavy duty Cordura™ material with removable plastic bottom for stability and easy clean up. Fits the 136/137 up to and including the 359 with a 20" bar. Husqvarna Gray with Husqvarna logo.

PART NO. 576 85 91-01



THE "CLASSIC" CARRYING CASE

Single Pack. Fits the 36, 41, 42, 45, 49, 55, 51, 55 Rancher, 242, 246, 254, 340, 345, 350, 351, 353 and 346XP. Orange.

PART NO. 100 00 01-01



CHAINSAW CARRYING STRAP

An elastic strap to be used together with a chainsaw hook for connecting the chainsaw to a harness belt. Measures 0.5 m (20") when relaxed and 1.25 m (49") fully stretched out.

PART NO. 577 43 80-01



CHAINSAW EYELET

The chainsaw eyelet attaches to your chainsaw allowing the operator to attach any Husqvarna standard chainsaw to a hook or strap.

PART NO. 578 07 71-01



CHAINSAW HOOK

The chainsaw hook clips on your waistbelt or harness allowing you to carry a chainsaw with the Chainsaw Strap and Eyelet.

PART NO. 580 80 03-01



SCABBARDS

Covers the bar and chain. Protects the chain from unnecessary damage or wear. Made from impact-resistant plastic with Husqvarna logo.

SIZE	PART NUMBER
13" - 16"	530 03 79-12
18" - 22"	501 83 44-11
24" - 28"	501 83 45-04

FORESTRY TOOLS



LIFTING HOOK

New sharper and improved hook that has ground edges from the factory. The new surface treatment with hardened steel makes the product robust and less sensitive to rust. The improved handle with measuring scale has a new design and better grip making it more ergonomic. Made in Sweden.

PART NO. 574 38 74-01



TIMBER TONGS

New, sharper and improved timber (lifting) tongs with ground edges that provide a powerful grip when lifting logs. Hardened steel makes the product robust and less susceptible to corrosion. Handle designed for better grip makes it more ergonomic. Made in Sweden.

PART NO. 574 38 75-01 (8")
PART NO. 574 38 76-01 (12")



FELLING LEVER WITH CANT HOOK

New design and improved material design provides a more robust product. The handle features an optimized grip and teeth give a better grip in wood. "Pot holes" minimize vibration in your hand when you're working with a wedge. Made in Sweden.

PART NO. 505 69 43-01

FELLING/BUCKING WEDGES

A "must-have" when felling trees. Wedges help the tree fall in the direction of the notch cut by actually lifting the tree in that direction. Used to prevent the tree from pinching the saw (or leaning back on the saw) while making a backcut. Can also be used for bucking trees already on the ground. Made of high impact ABS plastic.



PRODUCT DESCRIPTION	PART NUMBER
5.5" FELLING WEDGE (Blister Packed) Wood Grain/Smooth – Felling instructions included on package.	531 30 10-80
5.5" FELLING WEDGE Wood Grain/Smooth	531 30 96-56
8" FELLING WEDGE (Blister Packed) Wood Grain/Smooth – Felling instructions included on package.	531 30 10-81
8" FELLING WEDGE Wood Grain/Smooth	608 20 10-00
10" FELLING WEDGE (Blister Packed) Wood Grain/Smooth. Felling instructions included on package.	531 30 10-82
10" FELLING WEDGE Wood Grain/Smooth	608 20 10-01
12" FELLING WEDGE Wood Grain/Smooth	608 20 10-02

FORESTRY TOOLS

TOOL BELT KIT

Tools that have been carefully developed to cope with a whole range of tasks, from thinning to final felling. Tools and accessories that will meet the demands you place on professional equipment.

1. COMPLETE TOOL BELT KIT

Complete kit in a profiled box with tool belt, two holsters, rear tool carrier, lifting hook, lifting tongs and measuring tape. Overall length is 51.18".

PART NO. 505 69 90-15

2. HOLSTER

Compatible with the 8" Timber Tongs (not 12" Timber Tongs), Lifting Hook, and Felling Wedge

PART NO. 505 69 16-06

3. CEDEROTH FIELD FIRST AID KIT

Contains 1 Cederroth Blood Stopper (3-in-1 first aid dressing). Protective dressing/Pressure Pad/Burn Dressing. 1 Sterile Pad, 2 Elastic Bandages, 1 Mirror, 4 Wound Washes and 4 Plasters. Comes in a tough, safety orange pack.

PART NO. 605 00 01-52

4. LOGGER TAPE – 50' FT (15 M) & 66' FT (20 M)

PART NO. 505 69 73-60 (50')

PART NO. 505 69 73-62 (66')



HUSQVARNA FILING GEAR

		FILE KIT	12 PACK FILE	2 PACK FILE	ROLLER FILE GUIDE	COMBINATION FILE GUIDE	DEPTH GAUGE
HUSQVARNA CHAIN TYPE	OREGON COMPARABLE CHAIN TYPE	PART NUMBER/ SIZE	PART NUMBER/ SIZE	PART NUMBER/ SIZE	PART NUMBER/ SIZE	PART NUMBER/ SIZE	PART NUMBER/ SIZE
H30X	95VP	505 69 81-90 .325" (Pixel)	588 24 61-02 3/16" (4.8 mm)	544 03 69-48 3/16" (4.8 mm)	N/A .325"	N/A .325"	N/A .325"
H42X, H45, H46X, H47X, H47SX, H48X, H48SX, H50, H51, H54, H80 and H81	72DP, 72JG, 72LG, 72LP, 72V, 73DP, 73JG, 73LG, 73LP, 73V, 75LP, 75LG	505 69 81-91 3/8"	588 24 62-02 7/32" (5.5 mm)	588 24 62-01 7/32" (5.5 mm)	505 69 81-12 3/8"	505 24 35-01 3/8"	505 69 81-01 3/8"
H35X, H36	91VG, 91VS	505 69 81-93 3/8" Mini (Lo-Pro)	588 24 59-02 5/32" (4.0 mm)	588 24 59-01 5/32" (4.0 mm)	505 24 37-01 3/8" Mini (Lo-Pro)	N/A 3/8" Mini (Lo-Pro)	505 69 81-03 3/8" Mini (Lo-Pro)
H21X, H22X, H23X, H25X, H26X	20BP, 20LP, 21BP, 21LP, 22LP	505 69 81-94 .325"	588 24 61-02 3/16" (4.8 mm)	544 03 69-48 3/16" (4.8 mm)	505 69 81-10 .325"	505 69 81-09 .325"	505 69 81-00 .325"
H37, H38	33SL, 34SL	N/A .325"	588 24 61-02 3/16" (4.8 mm)	544 03 69-48 3/16" (4.8 mm) or 588 24 63-01 11/64" (4.5 mm)	N/A .325"	N/A .325"	N/A .325"
90SG	90SG	N/A 3/8"	N/A 11/64" (4.5 mm)	588 24 63-01 11/64" (4.5 mm)	N/A 3/8"	N/A 3/8"	N/A 3/8"

HUSQVARNA FILING GEAR

INTENSIVE-CUT SAW CHAIN FILES

New saw chain files with better sanding performance and longer life. Easier and gentler chain sharpening action, requiring less aggressiveness and force when filing. Removes up to 10% more material than other brands.

QUANTITY	SIZE	PART NUMBER
12 Pack	5/32" / 4.0 mm	588 24 59-02
12 Pack	3/16" / 4.8 mm	588 24 61-02
12 Pack	7/32" / 5.5 mm	588 24 62-02
2 Pack	5/32" / 4.0 mm	588 24 59-01
2 Pack*	3/16" / 4.8 mm	544 03 69-48
2 Pack	11/64" / 4.5 mm	588 24 63-01
2 Pack	7/32" / 5.5 mm	588 24 62-01

*Standard Cut Saw Chain Files



Improved Geometry of the Teeth/Cut (Special Spiral Cut)

Provides higher performance, higher stock removal rate, faster sharpening process and longer life. The user may feel that the tendency of "hooking" during the sharpening has been reduced without losing performance and aggressiveness. This design = less physical strain/pressure needed for sharpening. "Let the file do the work."

Innovative Hardening Process

Increased longer life due to less wear of the material.

Improved Corrosion Protection

Regardless of conditions (ie. humidity), the files will be in great condition. Allows for longer life and better appearance.

DEPTH GAUGE FILE

Husqvarna quality 6" flat depth gauge file made in Germany.

PART NO. 653 00 00-24



FILE KITS

Everything you need to file your chain. Complete with file handle, combination file guide (roller file guide and depth gauge in one), 2 round files and 1 flat file for depth gauges. The combination gauge helps ensure the correct filing angle and simplifies the filing process.

SIZE	PART NUMBER
.325" PIXEL	505 69 81-90
3/8"	505 69 81-91
3/8" LOPRO	505 69 81-93
.325"	505 69 81-94



FILING VISE

File your chain in the field. This portable filing vise digs in to any wood surface to secure your bar so you can sharpen your chain much easier.

PART NO. 505 66 52-56



FILE HANDLE

Patented file locking system that can hold round files or flat files. Shows 25° and 30° angles to ensure correct filing.

PART NO. 505 69 78-01



GUIDE BAR DRESSER

Dress bars easily no matter where you are. Removes burred edges and levels the bar rails. Holds a 90° angle.

PART NO. 653 00 00-39





ROLLER FILE GUIDE

Specially designed file guide that gives the correct filing angle every time. Exclusive design is easy to use and fits in your pocket.

SIZE	PART NUMBER
.325" (BP/LP)	505 69 81-10
3/8" (Lo-Pro)	505 24 37-01
.404"	505 69 81-15



DEPTH GAUGE

Get maximum performance from your chain when the depth gauges are filed to the correct height. Each depth gauge tool has settings for hard or soft wood.

SIZE	PART NUMBER
.325" (Not LG)	505 69 81-00
3/8"	505 69 81-01
.404"	505 69 81-02
3/8" (Lo-Pro)	505 69 81-03



COMBINATION FILE GUIDE

The Roller File Guide with a depth gauge tool all in one easy to handle and use filing tool. Fits in your pocket.

SIZE	PART NUMBER
3/8"	505 24 35-01
.325" (Pixel)	505 69 81-08
.325"	505 69 81-09



SHARP FORCE™ FILE GUIDE

Files both the cutter and depth gauge at one time, maintaining optimum cutting performance.

SIZE	PART NUMBER
7/32"	653 00 00-34
3/16"	653 00 00-35
5/32"	653 00 00-36

HUSQVARNA BAR & CHAIN FIT UP CHART

The below suggested bar & chain types are based on the most common original equipment combinations

CHAINSAW MODEL	BAR LENGTH	PITCH	GAUGE	DRIVE LINKS	BAR MODEL	PART NO.	CHAIN MODEL	PART NO.
51, 55, 336, 340, 345, 350, 346XP, 351, 353, 440, 445, 450, 545, 543 XP, 550 XP	20"	.325"	.050"	78	HT-250-78	608 00 00-08	H37-78	N/A
	16"	.325"	.058"	66	HT-258-66	608 00 00-06	H38-66	N/A
	18"	.325"	.058"	72	HT-258-72	608 00 00-07	H38-72	531 30 05-52
	20"	.325"	.058"	78	HT-258-78	608 00 00-09	H38-78	531 30 05-53
257, 261, 262, 262 XP, 357, 359, 455 RANCHER, 460, 460 RANCHER, 555	16"	3/8"	.050"	60	HT-280-60	608 00 00-16	H46X-60	501 84 25-60
	18"	3/8"	.050"	68	HT-280-68	608 00 00-19	H46X-68	501 84 25-68
	20"	3/8"	.050"	72	HT-280-72	608 00 00-21	H46X-72	501 84 25-72
	16"	3/8"	.058"	60	HT-288-60	608 00 00-17	H48X-60	501 84 28-60
	18"	3/8"	.058"	68	HT-288-68	608 00 00-20	H48X-68	501 84 28-68
	20"	3/8"	.058"	72	HT-288-72	608 00 00-22	H48X-72	501 84 28-72
61, 66, 266, 288 XP, 365, 372 XP, 385 XP, 390 XP, 394 XP, 395 XP, 3120 XP, 562 XP, 570, 575 XP, 576 XP	16"	3/8"	.050"	60	HT-380-60	608 00 00-42	H46X-60	501 84 25-60
	18"	3/8"	.050"	68	HT-380-68	608 00 00-44	H46X-68	501 84 25-68
	20"	3/8"	.050"	72	HT-380-72	608 00 00-46	H46X-72	501 84 25-72
	24"	3/8"	.050"	84	HT-380-84	608 00 00-48	H46X-84	501 84 25-84
	28"	3/8"	.050"	93	HT-380-93	608 00 00-51	H46X-93	501 84 25-93
	16"	3/8"	.058"	60	HT-388-60	608 00 00-43	H48X-60	501 84 28-60
	18"	3/8"	.058"	68	HT-388-68	608 00 00-45	H48X-68	501 84 28-68
	20"	3/8"	.058"	72	HT-388-72	608 00 00-47	H48X-72	501 84 28-72
	24"	3/8"	.058"	84	HT-388-84	608 00 00-50	H48X-84	501 84 28-84
	28"	3/8"	.058"	93	HT-388-93	608 00 00-52	H48X-93	501 84 28-93
3120 XP	32"	.404"	.063"	95	HT-343-95	608 00 00-62	H57-95	N/A
	36"	.404"	.063"	104	HT-343-104	608 00 00-63	H57-104	N/A
55 RANCHER, 257, 261, 362 XP, 357 XP, 359, 455 RANCHER, 460, 460 RANCHER, 555, 576	16"	3/8"	.050"	60	HA-280-60	NLA	H46X-60	501 84 25-60
	18"	3/8"	.050"	68	HA-280-68	608 00 00-12	H46X-68	501 84 25-68
	20"	3/8"	.050"	72	HA-280-72	608 00 00-14	H46X-72	501 84 25-72
288 XP, 365, 372 XP, 385 XP, 390 XP, 394 XP, 395 XP, 562XP, 565 XP, 570, 575 XP, 576 XP	16"	3/8"	.050"	60	HA-380-60	NLA	H46X-60	501 84 25-60
	18"	3/8"	.050"	68	HA-380-68	608 00 00-31	H46X-68	501 84 25-68
	20"	3/8"	.050"	72	HA-380-72	608 00 00-32	H46X-72	501 84 25-72
	24"	3/8"	.050"	84	HA-380-84	608 00 00-35	H46X-84	501 84 25-84

SOLID BARS with replaceable sprocket tips

Designed for felling and bucking with professional saws

SOLID BARS with armor tips

Designed for dirty and sandy conditions

Low kickback, LowVib® chain

Reduced kickback, LowVib® chain

GUIDE BARS, CHAIN REELS AND CHAIN LOOPS

GUIDE BARS

CHAIN SIZE	BAR LENGTH	DRIVE LINKS	HUSQVARNA DESCRIPTION	PART NUMBER
SOLID – POWER MATCH – REPLACEABLE TIPS – PROFESSIONAL BARS				
3/8"- .050"	16"	60	HT-280-60	608 00 00-16
3/8"- .050"	18"	68	HT-280-68	608 00 00-19
3/8"- .050"	20"	72	HT-280-72	608 00 00-21
3/8"- .050"	24"	84	HT-280-84	608 00 00-23
3/8"- .050"	16"	60	HT-380-60	608 00 00-42
3/8"- .050"	18"	68	HT-380-68	608 00 00-44
3/8"- .050"	20"	72	HT-380-72	608 00 00-46
3/8"- .050"	24"	84	HT-380-84	608 00 00-48
3/8"- .050"	28"	93	HT-380-93	608 00 00-51
3/8"- .050"	32"	105	HT-380-105	608 00 00-53
3/8" – .058"	16"	60	HT-288-60	608 00 00-17
3/8" – .058"	18"	68	HT-288-68	608 00 00-20
3/8" – .058"	20"	72	HT-288-72	608 00 00-22
3/8" – .058"	24"	84	HT-288-84	608 00 00-24
3/8" – .058"	16"	60	HT-388-60	608 00 00-43
3/8" – .058"	18"	68	HT-388-68	608 00 00-45
3/8" – .058"	20"	72	HT-388-72	608 00 00-47
3/8" – .058"	24"	84	HT-388-84	608 00 00-50
3/8" – .058"	28"	93	HT-388-93	608 00 00-52
3/8" – .058"	32"	105	HT-388-105	608 00 00-54
3/8" – .058"	36"	115	HT-388-115	608 00 00-58
3/8" – .063"	24"	93	HT-383-84	608 00 01-41
3/8" – .063"	28"	93	HT-383-93	587 64 25-01
3/8" – .063"	32"	105	HT-383-105	608 00 00-55
3/8" – .063"	36"	115	HT-383-115	608 00 00-59
.325" – .050"	16"	66	HT-250-66	608 00 00-05
.325" – .050"	18"	72	HT-250-72	587 64 24-01
.325" – .050"	20"	78	HT-250-78	608 00 00-08
.325" – .058"	16"	66	HT-258-66	608 00 00-06
.325" – .058"	18"	72	HT-258-72	608 00 00-07
.325" – .058"	20"	78	HT-258-78	608 00 00-09
.404" – .063"	32"	95	HT-343-95	608 00 00-62
.404" – .063"	36"	104	HT-343-104	608 00 00-63
TECHLITE® REDUCED WEIGHT – REPLACEABLE TIPS – PROFESSIONAL BARS				
3/8"- .043"	12"	45	TLR-186-45	501 95 95-45
3/8"- .043"	14"	52	TLR-186-52	501 95 95-52
3/8"- .045"	12"	45	TLR-280-45	578 10 68-45
3/8"- .045"	14"	52	TLR-280-52	578 10 68-52
3/8"- .050"	12"	45	TLR-380-45	576 83 07-45
3/8"- .050"	14"	52	TLR-380-52	576 83 07-52
3/8"- .050"	16"	56	TLR-380-56	576 83 07-56

CHAIN SIZE	BAR LENGTH	DRIVE LINKS	HUSQVARNA DESCRIPTION	PART NUMBER
PROFESSIONAL TITANIUM ROLLER TIP BARS				
.404" – .063"	44"	128	HT343-128	608 00 01-44
PIXEL – NARROW KERF – MICRO-LITE PRO BARS – SPROCKET NOSE COMMERCIAL BARS				
.325" – .050"	13"	56	HLN-250-56	508 92 61-56
.325" – .050"	16"	66	HLN-250-66	508 92 61-66
.325" – .050"	18"	72	HLN-250-72	508 92 61-72
.325" – .050"	20"	80	HLN-250-80	508 92 61-80
LASER (ARMOR) -TIP – SOLID NOSE BARS				
3/8" – .050"	18"	68	HA-280-68	608 00 00-12
3/8" – .050"	20"	72	HA-280-72	608 00 00-14
3/8" – .050"	18"	68	HA-380-68	608 00 00-31
3/8" – .050"	20"	72	HA-380-72	608 00 00-32
3/8" – .050"	24"	84	HA-380-84	608 00 00-35
3/8" – .063"	20"	72	HA-383-72	608 00 00-34
3/8" – .063"	24"	84	HA-383-84*	608 00 00-37
DOUBLE GUARD PRO INTENZ® – SPROCKET NOSE SIDE TENSIONING BARS				
3/8" – .050"	14"	52	HLI-280-52	501 95 96-52
3/8" – .050"	16"	56	HLI-280-56	501 95 96-56

CHAIN REELS – 100 FT

CHAIN SIZE	CHAIN TYPE	PART NUMBER	FEET
.325" – .050"	H22X-100U	503 30 67-01	100
.325" – .050"	H23X-100U	503 30 91-01	100
.325" – .050" PIXEL	H30X-100U	503 30 58-01	100
.325" – .058"	H21X-100U	503 30 57-01	100
.325" – .063"	H26X-100U	503 30 73-01	100
3/8" – .050" (MINI) LO-PRO CHAIN	H36-100U	576 93 65-01	100
3/8" – .050" (MINI) LO-PRO CHAIN	H35X-100U	503 30 69-01	100
3/8" – .050" CHAIN	H46X-100U	503 30 78-01	100
3/8" – .050" CHAIN	H47X-100U	503 30 79-01	100
3/8" – .050" CHAIN	H47SX-100U	503 30 80-01	100
3/8" – .050" CHAIN	H51-100U	503 30 33-22	100
3/8" – .050" CHAIN	H80-100U	503 30 82-01	100
3/8" – .050" CHAIN	H82-100U	503 30 84-01	100
3/8" – .058" CHAIN	H42X-100U	503 30 60-01	100
3/8" – .058" CHAIN	H48X-100U	503 30 81-01	100
3/8" – .058" CHAIN	H48SX-100U	544 07 58-01	100
3/8" – .063" CHAIN	H45X-100U	503 30 88-01	100
3/8" – .063" CHAIN	H50X-100U	501 98 24-01	100
3/8" – .063" CHAIN	H83-100U	503 30 85-01	100

CHAIN LOOPS

CHAIN SIZE	CHAIN TYPE	CHAIN LENGTH	PART NUMBER	DRIVE LINKS
.325" - .050" CHAIN	H22X-66	16"	501 84 09-66	66
.325" - .050" CHAIN	H22X-72	18"	501 84 09-72	72
.325" - .050" CHAIN	H22X-78	20"	501 84 09-78	78
.325" - .050" CHAIN	H23X-64	15"	501 84 08-64	64
.325" - .050" CHAIN	H23X-66	16"	501 84 08-66	66
.325" - .050" CHAIN	H23X-67	16"	501 84 08-67	67
.325" - .050" CHAIN	H23X-72	18"	501 84 08-72	72
.325" - .050" CHAIN	H23X-74	18"	501 84 08-74	74
.325" - .050" CHAIN	H23X-78	20"	501 84 08-78	78
.325" - .050" CHAIN	H23X-80	20"	501 84 08-80	80
.325" - .050" CHAIN	H23X-81	20"	501 84 08-81	81
.325" - .058" CHAIN	H21X-56	13"	501 84 07-56	56
.325" - .058" CHAIN	H21X-64	15"	501 84 07-64	64
.325" - .058" CHAIN	H21X-66	16"	501 84 07-66	66
.325" - .058" CHAIN	H21X-72	18"	501 84 07-72	72
.325" - .058" CHAIN	H21X-78	20"	501 84 07-78	78
.325" - .063" CHAIN	H26X-62	16"	501 84 17-62	62
.325" - .063" CHAIN	H26X-67	16"	501 84 17-67	67
.325" - .063" CHAIN	H26X-68	18"	501 84 17-68	68
.325" - .063" CHAIN	H26X-72	18"	501 84 17-72	72
.325" - .063" CHAIN	H26X-74	18"	501 84 17-74	74
.325" - .063" CHAIN	H26X-81	20"	501 84 17-81	81
3/8" - .043" (MINI) LO-PRO CHAIN	H38-45	12"	581 80 79-45	45
3/8" - .043" (MINI) LO-PRO CHAIN	H38-52	14"	581 80 79-52	52
3/8" - .050" (MINI) LO-PRO CHAIN	H35X-40	10"	501 84 70-40	40
3/8" - .050" (MINI) LO-PRO CHAIN	H35X-44	12"	501 84 70-44	44
3/8" - .050" (MINI) LO-PRO CHAIN	H35X-45	12"	501 84 70-45	45
3/8" - .050" (MINI) LO-PRO CHAIN	H35X-52	14"	501 84 70-52	52
3/8" - .050" (MINI) LO-PRO CHAIN	H35X-55	16"	501 84 70-55	55
3/8" - .050" (MINI) LO-PRO CHAIN	H35X-56	16"	501 84 70-56	56
3/8" - .050" (MINI) LO-PRO CHAIN	H35X-59	16"	501 84 70-59	59
3/8" - .050" (MINI) LO-PRO CHAIN	H35X-62	18"	501 84 70-62	62
3/8" - .050" (MINI) LO-PRO CHAIN	H35X-66	18"	501 84 70-66	66
3/8" - .050" CHAIN	H46X-60	16"	501 84 25-60	60
3/8" - .050" CHAIN	H46X-68	18"	501 84 25-68	68
3/8" - .050" CHAIN	H46X-72	20"	501 84 25-72	72
3/8" - .050" CHAIN	H46X-84	24"	501 84 25-84	84
3/8" - .050" CHAIN	H46X-93	28"	501 84 25-93	93
3/8" - .050" CHAIN	H46X-105	32"	501 84 25-05	105
3/8" - .050" CHAIN	H47X-60	16"	501 84 26-60	60
3/8" - .050" CHAIN	H47X-66	18"	501 84 26-66	66

CHAIN SIZE	CHAIN TYPE	CHAIN LENGTH	PART NUMBER	DRIVE LINKS
3/8" - .050" CHAIN	H47X-68	18"	501 84 26-68	68
3/8" - .050" CHAIN	H47X-70	20"	501 84 26-70	70
3/8" - .050" CHAIN	H47X-72	20"	501 84 26-72	72
3/8" - .050" CHAIN	H47X-84	24"	501 84 26-84	84
3/8" - .050" CHAIN	H47X-93	28"	501 84 26-93	93
3/8" - .050" CHAIN	H47X-105	32"	501 84 26-05	105
3/8" - .050" CHAIN	H47SX-68	18"	501 84 27-68	68
3/8" - .050" CHAIN	H47SX-72	20"	501 84 27-72	72
3/8" - .050" CHAIN	H47SX-84	24"	501 84 27-84	84
3/8" - .050" CHAIN	H47SX-93	28"	501 84 27-93	93
3/8" - .050" CHAIN	H47SX-105	32"	501 84 27-05	105
3/8" - .050" CHAIN	H51-68	18"	505 02 90-68	68
3/8" - .050" CHAIN	H51-72	20"	505 02 90-72	72
3/8" - .050" CHAIN	H51-84	24"	505 02 90-84	84
3/8" - .050" CHAIN	H82-72	20"	501 84 67-72	72
3/8" - .050" CHAIN	H82-84	24"	501 84 67-84	84
3/8" - .050" CHAIN	H82-91	28"	501 84 67-91	91
3/8" - .050" CHAIN	H82-93	28"	501 84 67-93	93
3/8" - .050" CHAIN	H82-105	32"	501 84 67-05	105
3/8" - .058" CHAIN	H42X-68	18"	501 84 14-68	68
3/8" - .058" CHAIN	H42X-72	20"	501 84 14-72	72
3/8" - .058" CHAIN	H42X-84	24"	501 84 14-84	84
3/8" - .058" CHAIN	H42X-92	28"	501 84 14-92	92
3/8" - .058" CHAIN	H42X-115	36"	501 84 14-15	115
3/8" - .058" CHAIN	H48X-60	16"	501 84 28-60	60
3/8" - .058" CHAIN	H48X-68	18"	501 84 28-68	68
3/8" - .058" CHAIN	H48X-72	20"	501 84 28-72	72
3/8" - .058" CHAIN	H48X-84	24"	501 84 28-84	84
3/8" - .058" CHAIN	H48X-93	28"	501 84 28-93	93
3/8" - .058" CHAIN	H48X-105	32"	501 84 28-05	105
3/8" - .058" CHAIN	H48X-115	36"	501 84 28-15	115
3/8" - .058" CHAIN	H48SX-72	20"	544 07 59-72	72
3/8" - .058" CHAIN	H48SX-84	24"	544 07 59-84	84
3/8" - .058" CHAIN	H48SX-93	28"	544 07 59-93	93
3/8" - .058" CHAIN	H48SX-105	32"	544 07 59-05	105
3/8" - .058" CHAIN	H48SX-115	36"	544 07 59-15	115
3/8" - .063" CHAIN	H83-93	28"	501 84 68-93	93
3/8" - .063" CHAIN	H83-105	32"	501 84 68-05	105
3/8" - .063" CHAIN	H83-115	36"	501 84 68-15	115
.404" - .063" CHAIN	H64-65	20"	501 84 31-65	65
.404" - .063" CHAIN	H64S-95	32"	575 22 35-95	95
.404" - .063" CHAIN	H57S-128	42"	504 76 97-28	128

AXES AND HAND TOOLS

WOODEN HANDLE AXES

Forestry and wood cutting tools are unbeatable partners when needed. Our selection of felling axes, splitting mauls and hatchets can ensure you get the job done safely and confidently.



HATCHET

- Small, light axe for cutting branches or splitting small cam fire wood
- Comes with a leather edge cover
- Head is attached to the handle using both a wooden and steel wedge to secure fastening
- Length: 13" (33 cm), Weight: 1.5 lbs. (.68 kg)
- Axe Head Weight: 1.32 lbs. (.6 kg)

PART NO. 576 92 64-01



CARPENTER'S AXE

- Designed with a long straight cutting edge and thin blade to allow for stability and control when cutting
- Best suited for carpentry and other wood work
- Recess in the head so that the hand gets as close as possible to the cutting edge for maximum control
- Comes with a leather edge cover
- The head is attached to the handle using both a wooden and a steel wedge to secure fastening
- Length: 19" (48 cm), Weight: 2.75 lbs. (1.247 kg)
- Axe Head Weight: 2.2 lbs. (1 kg)

PART NO. 576 92 65-01





MULTI-PURPOSE AXE

- Single-bit traditional style. Used for felling and other jobs
- Long handle provides power to the cut
- Comes with a leather edge cover
- Head is attached to the handle using both a wooden and steel wedge to secure fastening
- Length: 26" (66 cm), Weight: 3 lbs. (1.361 kg)
- Axe Head Weight: 1.87 lbs. (.85 kg)

PART NO. 576 92 62-01



SMALL SPLITTING AXE

- Best suited for basic splitting of lighter fire wood
- Head is designed to go easily into the wood, requiring minimal effort by the chopper to split the wood in two
- Small size makes a one-hand grip possible
- Comes with a leather edge cover
- Head is attached to the handle using both a wooden and steel wedge to secure fastening
- Length: 19" (48 cm), Weight: 2.75 lbs. (1.247 kg)
- Axe Head Weight: 1.98 lbs. (.9 kg)

PART NO. 576 92 68-01



LARGE SPLITTING AXE

- Best suited for splitting thicker wood
- Head is designed to go easy into the wood, with minimal effort by the chopper to split the wood in two
- Long handle creates extra power and utilizes a two-hand grip.
- Comes with a leather edge cover
- Head is attached to the handle using both a wooden and steel wedge to secure fastening
- Length: 30" (76 cm), Weight: 5 lbs. (2.268 kg)
- Axe Head Weight: 3.31 lbs. (1.5 kg)

PART NO. 576 92 67-01



SPLITTING MAUL

- Designed for splitting chunks of wood. The poll is designed for driving splitting wedges
- Heaviest and most powerful axe for splitting logs and large chunks of wood
- Hardened striking face in the neck and can therefore be used as a sledge or in combination with a splitting wedge
- Comes with a leather edge cover
- Head is attached to the handle using both a wooden and steel wedge to secure fastening
- NOTE! Only sledge axes can withstand use as a sledgehammer
- Length: 32" (81 cm), Weight: 6.5 lbs (2.948 kg)
- Axe Head Weight: 5.51 lbs. (2.5 kg)

PART NO. 576 92 66-01



CLEARING AXE

- Designed to clear brush with one hand.
- Hickory shaft and replaceable blade on both faces
- Length: 26" (66 cm) / Weight: 2.17 lbs. (.985 kg)

PART NO. 579 00 06-01

All Husqvarna axes are hand forged with high-quality, precision-ground Swedish steel with premium hickory shafts, showing the story of expert craftsmanship. In addition, each axe comes with a grain-leather sheath for protection.



AXES – COMPOSITE HANDLES

Fiber-reinforced shaft makes the axe durable and robust. Balance point close to the axe head gives perfect balance and weight distribution. Hammer function for an easy and effective use of splitting wedges (no steel wedges).



HATCHET H900

Small hatchet for firewood, garden work and other outdoor activities.

- The axe head has a non-stick coating which gives less friction and easy entry into the wood
- Soft grip for ergonomics and secure handling
- Length: 13.4" (34 cm)
Weight: 1.98 lbs. (.9 kg)
- Axe Head Weight: 1.54 lbs (.7 kg)

PART NO. 580 76 10-01



MULTI-PURPOSE AXE A1400

Universal axe made for various kinds of wood work such as construction or forest work.

- The axe head has a non-stick coating which gives less friction and easy entry into the wood and the head geometry is adapted to the application of wood working
- Handle protection and long life due to the stainless steel shaft protection
- This combination gives high penetration and power to the cut
- Length: 23.6" (60 cm), Weight: 3.09 lbs. (1.4 kg)
- Axe Head Weight: 2.2 lbs (1.0 kg)

PART NO. 580 76 11-01



MULTI-PURPOSE AXE A2400

A powerful universal axe for various kinds of wood work such as construction or forest work.

- The axe head has a non-stick coating which gives less friction and easy entry into the wood and the head geometry is adapted to the application of wood working
- Handle protection and long life due to the stainless steel shaft protection
- This combination gives high penetration and power to the cut
- Length: 27.6" (70 cm), Weight: 5.29 lbs. (2.4 kg)
- Axe Head Weight: 3.97 lbs (1.8 kg)

PART NO. 580 76 12-01

SPLITTING AXE S1600

Splitting axes are made for splitting logs for firewood.

- The axe head has a non-stick coating which gives less friction and easy entry into the wood and the head geometry is adapted to the application of splitting medium-sized logs
- Handle protection and long life due to the stainless steel shaft protection
- The combination of the optimized axe head and the light shaft concentrates the power into the cut which gives an easier split of the logs
- Length: 23.6" (60 cm), Weight: 3.53 lbs. (1.6 kg)
- Axe Head Weight: 2.65 lbs. (1.2 kg)



PART NO. 580 76 13-01

SPLITTING AXE S2800

A more powerful splitting axe made for splitting larger logs.

- The axe head has a non-stick coating which gives less friction and easy entry into the wood and the head geometry is adapted to the splitting application of large logs
- Handle protection and long life due to the stainless steel shaft protection
- The combination of the optimized axe head and the light shaft concentrates the power into the cut which gives an easier split of the logs
- Length: 27.6" (70 cm), Weight: 6.17 lbs. (2.8 kg)
- Axe Head Weight: 5.07 lbs. (2.3 kg)

PART NO. 580 76 14-01



PRUNING SAWS

The rigid saw blades with impulse-hardened precision toothing features triple grinding. This means particularly high sawing performance, quiet running, effort-saving sawing and a very long lifetime. The particularly smooth pulling cut is ideal for fresh and dry wood. Practical: the saw blade is easy to replace. Rust has no chance to attack. In addition to the eyelet for hanging up the saw, this product has a blade cover so that it can be stored safely and in a handy place. During sawing, a stop at the end of the handle prevents you from slipping. This has proven particularly useful during pulling movements, and assists you in making smooth progress. Thanks to the ergonomic, slightly angled handle shape and soft handle parts, these saws lie comfortably and safely in your hand.



300 CU – CURVED SAW BLADE

- Great for professionals and enthusiasts because of the aggressive cutting performance on larger wood
- Total Length: 19.7" (500 mm), Blade Length: 11.8" (300 mm)

PART NO. 967 23 66-01

300 ST – STRAIGHT SAW BLADE

- Great for professionals and enthusiasts because of the maneuverability in trees with close branches
- Straight blade saws are easier to control and less likely to clip close branches than curved blades
- Straight blades also enable the user to manipulate hinge wood for precision log felling techniques
- Although incredibly smooth and efficient, a straight saw blade pruning saw doesn't cut quite as fast as curved blades
- Total Length: 19.7" (500 mm), Blade Length: 11.8" (300 mm)

PART NO. 967 23 65-01



FOLDING SAW

This is an easy-to-use all-round saw for cutting back thicker branches. It is ideal for all minor sawing work in the garden, and also for outdoor activities. The hard-chrome-plated saw blade has impulse-hardened precision toothing with triple grinding, which ensures fast results with little use of force, and a superb, precise cut. Notching in particular is made substantially easier. The lock button holds the saw securely and safely in three different settings. During sawing, a stop at the end of the handle prevents you from slipping. This has proven particularly useful during pulling movements, and assists you in making a smooth cut. Thanks to the ergonomic, slightly angled handle shape and soft handle parts, this saw lies comfortably and safely in your hand. You can saw one-handed or two-handed as required.

200 FO – FOLDING STRAIGHT SAW BLADE

- Many of the benefits mentioned above of a straight saw blade with the additional flexibility to fold it up and to carry it in your pocket or for compact storage
- Total Length: 20.9" (530 mm), Blade Length: 7.9" (200 mm)

PART NO. 967 23 64-01



OILS AND FUELS



2-STROKE FUEL + OIL

XP® FUEL (PRE-MIXED 2-STROKE FUEL + OIL)

Husqvarna ETHANOL FREE, High Octane XP® Fuel is mixed with Husqvarna's best synthetic oil blend. OCTANE RATING: (R+M)/2 METHOD 95. This product was specifically formulated to provide the Husqvarna handheld owner with optimal equipment performance. Fuel does not degrade or oxidize like pump gas. Fuel stays fresh for years, solving longer term storage needs. Easier, more dependable starts. Protects fuel systems and saves carburetors. Avoids costly rebuilds and downtime. Convenient, ready to use, no mixing required. JASO-FD certified premium synthetic oil blend for your 2-stroke air-cooled engine.

CONTAINER SIZE	PART NUMBER
1 QUART	581 15 87-01
1 GALLON	581 15 88-02
5 GALLON	581 15 87-03
48 GALLON	581 15 87-04



1 QUART



1 GALLON



5 GALLON



48 GALLON

BAR AND CHAIN OILS, 2-STROKE OILS, FUEL STABILIZER



HUSQVARNA'S PREMIUM BAR AND CHAIN OIL

Made of virgin oil, not using reclaimed oils, it optimizes your saw's cutting performance by reducing heat and friction. It is a premium blend of base stocks and tackifier additives which reduces high speed throw-off. Extends bar, chain and sprocket life by protecting against wear. Also for use in other chainsaws. Husqvarna's EcoSmart™ Bar and Chain Oil is a premium blend of vegetable-based oil and tackifier additives (80% canola oil which allows for most of the oil to biodegrade within 21 days). Excellent lubricating qualities which extend bar, chain and sprocket life. Non toxic with a high flash point and viscosity.

CONTAINER SIZE	PART NUMBER
ORIGINAL – PROFESSIONAL GRADE	
1 QUART	610 00 00-14
1 GALLON	610 00 01-58
55 GALLON	610 00 00-39
LOW TEMP	
1 GALLON	610 00 01-60
55 GALLON	610 00 00-70
BIODEGRADABLE	
1 GALLON	610 00 01-59



XP® PROFESSIONAL PERFORMANCE 2-STROKE ENGINE OIL

Our best formulation to date is the XP® Professional Performance 2-stroke lubricant. It is a synthetic blend designed for tough, professional use.

- Handles high loads at tough professional use
- Excellent lubricating properties
- Lowers engine operating temperature
- Less coating on the piston and in crankcase
- Extends the engine's life
- Provides longer service intervals
- Low to medium smoke emission
- Includes fuel stabilizer

CONTAINER SIZE	PART NUMBER
2-STROKE ENGINE OIL (50:1)	
2.6 OZ.	610 00 01-30
5.2 OZ.	505 52 59-01
6.4 OZ.	610 00 01-31
12.8 OZ.	610 00 01-32
1 GALLON	610 00 01-33
5 GALLON	610 00 01-66
55 GALLON	610 00 01-34



LOW SMOKE 2-STROKE ENGINE OIL

Husqvarna Low Smoke oil meets and exceeds the latest oil specifications for JASO-FD and ISO-EGD, and exceeds the current API TC Spec requirements.

- Semi-Synthetic Blend
- Includes fuel stabilizer to reduce the risk of engine failure or poor running characteristics brought on by stale or poor fuel
- Improves blending with a broader range of fuels, including higher octane fuel
- Noticeable reduction in exhaust smoke
- Reduces fuel oxidation and improves lubricity

CONTAINER SIZE	PART NUMBER
2-STROKE ENGINE OIL (50:1)	
2.6 OZ.	610 00 01-35
5.2 OZ.	505 52 60-01
6.4 OZ.	610 00 01-36
12.8 OZ.	610 00 01-37
1 GALLON	610 00 01-38
5 GALLON	610 00 01-65
55 GALLON	610 00 01-39



FUEL STABILIZER

Fuel stabilizer for all 2-stroke or 4-stroke engines such as trimmers, blowers, chainsaws, lawn mowers and tractors, tillers, snow blowers, marine engines, dirt bikes and tractors. Fuel stabilizer is a blend of additives that prevents fuel from deteriorating.

CONTAINER SIZE	PART NUMBER
2.5 OZ.	505 02 13-01

ACCESSORIES FOR TRIMMERS, BRUSH CUTTERS AND CLEARING SAWS



TRIMMER LINE

XP® FORCE™



Extreme Commercial Grade dual polymer trimmer line in a metallic green color that blends with grass. The shape of our Titanium Force™ Trimmer Line is combined with a strong abrasion-resistant outer skin that allows for increased strength that lasts up to 30% longer than traditional trimmer lines. Level flight characteristics, allow for reduced fuel consumption and faster line acceleration. Fits all standard trimmer heads.



1 LB. DONUTS

SPOOL LENGTH	LINE DIAMETER	PART NUMBER
280 ft.	.095"	505 03 16-04
230 ft.	.105"	505 03 16-05
150 ft.	.130"	505 03 16-09



3 LB. SPOOLS

SPOOL LENGTH	LINE DIAMETER	PART NUMBER
840 ft.	.095"	505 03 16-06
690 ft.	.105"	505 03 16-07
450 ft.	.130"	505 03 16-08



5 LB. SPOOLS

SPOOL LENGTH	LINE DIAMETER	PART NUMBER
1,427 ft.	.095"	577 49 75-01
1,168 ft.	.105"	577 49 75-02

All XP Force™ trimmer line includes line cutter.

TITANIUM FORCE™



Commercial Grade trimmer line in a silver color. The exclusive design is based on cutting edge technology, gives longer life and better performance. Level flight characteristics, allow for reduced fuel consumption and faster line acceleration. Fits all standard trimmer heads.



1 LB. DONUTS

SPOOL LENGTH	LINE DIAMETER	PART NUMBER
280 ft.	.095"	639 00 51-04
230 ft.	.105"	639 00 51-05
150 ft.	.130"	505 03 16-10



3 LB. SPOOLS

SPOOL LENGTH	LINE DIAMETER	PART NUMBER
840 ft.	.095"	639 00 51-06
690 ft.	.105"	639 00 51-07
450 ft.	.130"	639 00 51-08



5 LB. SPOOLS

SPOOL LENGTH	LINE DIAMETER	PART NUMBER
1,427 ft.	.095"	639 00 51-09
1,168 ft.	.105"	639 00 51-10
763 ft.	.130"	505 03 16-11

All Titanium Force™ trimmer line includes line cutter.

TRIM FORCE™



Commercial Grade co-polymer, Pentagon shape design for great cutting performance and reduced breakage. Fits all standard trimmer heads. Orange color.



1 LB. DONUTS

SPOOL LENGTH	LINE DIAMETER	PART NUMBER
280 ft.	.095"	639 00 61-10
230 ft.	.105"	639 00 61-15
153 ft.	.130"	639 00 61-20



3 LB. SPOOLS

SPOOL LENGTH	LINE DIAMETER	PART NUMBER
840 ft.	.095"	639 00 61-11
690 ft.	.105"	639 00 61-16
450 ft.	.130"	639 00 61-21
320 ft.	.155"	639 00 61-24



5 LB. SPOOLS

SPOOL LENGTH	LINE DIAMETER	PART NUMBER
1,427 ft.	.095"	639 00 61-12
1,168 ft.	.105"	639 00 61-17
763 ft.	.130"	639 00 61-22
533 ft.	.155"	639 00 61-25

All Trim Force™ trimmer line includes line cutter.

TRIMMER HEADS

T SERIES Tap Advance Trimmer Heads

Exclusively designed by Husqvarna, these Tap Advance trimmer heads feature an easy to reload spool that comes off with the cap, eliminating the need to turn the trimmer upside down to reload the line. The spool has a split design which reduces tangling and line welding, and has arrows to show the correct directional winding of the line to eliminate guesswork. Has two key slots to lock the trimmer line in and keep it from unwrapping while putting the cap back on the trimmer head.



T35 UNIVERSAL* | includes arbor kit to fit select Echo™, RedMax™, Shindaiwa™, Stihl™ and Poulan models.

FITS THE FOLLOWING HUSQVARNA MODELS: 122LDX, 123L, 123LD, 125L, 128L, 128LD, 128LDX, 129L, 129LDX, 129DJX, 223L, 224L, 225L, 225LD, 225R, 225RJ, 232L, 232R, 235RJX, 240L, 322L, 322R, 323L, 323LD, 323R, 323RJ, 324LX, 324LDX, 324RX, 325LX, 325LDX, 325RX, 325RDX, 325RJX, 326L, 326LS, 326LX, 326LDX, 326RX, 326RJX, 327LS, 327RJX, 329LDX, 426LST, 430LS, 525LS, 525LST

ARBOR: 10 mm / THREAD: LH | PART NO. 537 38 81-01



T35 NON UNIVERSAL*

FITS THE FOLLOWING HUSQVARNA MODELS: 122LDX, 123L, 123LD, 125L, 128L, 128LD, 128LDX, 129L, 129LDX, 129DJX, 223L, 224L, 225L, 225LD, 225R, 225RJ, 232L, 232R, 235RJX, 240L, 322L, 322R, 323L, 323LD, 323R, 323RJ, 324LX, 324LDX, 324RX, 325LX, 325LDX, 325RX, 325RDX, 325RJX, 326L, 326LS, 326LX, 326LDX, 326RX, 326RJX, 327LS, 327RJX, 329LDX, 426LST, 430LS, 525LS, 525LST

ARBOR: 10 mm / THREAD: LH | PART NO. 531 30 01-83



T35X BALL BEARING TAP ADVANCE BUTTON*

FITS THE FOLLOWING HUSQVARNA MODELS: 122LDX, 123L, 123LD, 125L, 128L, 128LD, 128LDX, 129L, 129LDX, 129DJX, 223L, 224L, 225L, 225LD, 225R, 225RJ, 232L, 232R, 235RJX, 240L, 322L, 322R, 323L, 323LD, 323R, 323RJ, 324LX, 324LDX, 324RX, 325LX, 325LDX, 325RX, 325RDX, 325RJX, 326L, 326LS, 326LX, 326LDX, 326RX, 326RJX, 327LS, 327RJX, 329LDX, 426LST, 430LS, 525LS, 525LST

ARBOR: 10 mm / THREAD: LH | PART NO. 578 44 65-01



T35X BALL BEARING TAP ADVANCE BUTTON*

FITS THE FOLLOWING HUSQVARNA MODELS: 132L, 132R, 132RJ, 235F, 235FR, 240R, 245RX, 250RX, 252RX, 265RX, 335FR, 335LS, 345FR, 336FR, 535LS

ARBOR: 12 mm / THREAD: LH | PART NO. 578 44 66-01



T45X PROFESSIONAL TAP ADVANCE TRIMMER HEAD* features a reinforced, ball bearing tap button

FITS THE FOLLOWING HUSQVARNA MODELS: 40R, 250R, 250RX, 335LS, 335RX, 335FR, 343R, 343FR, 345FX, 345RX, 345FR, 355FX, 545FX, 555FX

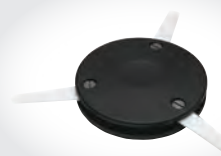
ARBOR: 12 mm / THREAD: LH | PART NO. 544 97 26-03



S35 MANUAL LINE HEAD | A dual line, manually-fed trimmer head for straight-shaft trimmers and designed for commercial use. Holds line of: .080", .095", and .105"

FITS THE FOLLOWING HUSQVARNA MODELS: 12 mm 120L, 120R, 125L, 125LD, 125R, 125RJ, 132L, 132R, 132RJ, 235R, 240R, 245RX, 250RX, 252RX, 265RX, 335LS, 535LS – 10 mm 122L, 123L, 123LD, 125L, 128L, 128LD, 128LDX, 224L, 225L, 225LD, 225R, 225RJ, 232L, 232R, 235RJX, 240L, 322L, 322R, 323L, 323LD, 323R, 323RJ, 324Lx, 324LDx, 324Rx, 325Lx, 325LDx, 325Rx, 325RDX, 325RJx, 326L, 326Lx, 326LDx, 326Rx, 326LS, 326RJx, 327LS, 327LDx, 426LST, 430LS, 525LS, 525LST

ARBOR: 12 mm / THREAD: LH | PART NO. 578 44 76-01 ARBOR: 10 mm / THREAD: LH | PART NO. 578-44-74-01



TRI-CUT HEAD | Three nylon blades that pivot. Cuts light grass to thick weeds.

FITS THE FOLLOWING HUSQVARNA MODELS: 12 mm 120L, 120R, 122LDX, 132L, 132R, 132RJ, 235R, 240F, 240R, 245RX, 250R, 250RX, 252RX, 265RX, 336FR, 343F, 343R, 345FX, 345FXT, 345RX, 545FX, 555FX – 10 mm 122L, 123L, 123LD, 125L, 125LD, 125R, 125RJ, 128L, 128LD, 128LDX, 128DJX, 128R, 128RJ, 129L, 129LDx, 129DJX, 225L, 225LD, 225R, 225RJ, 232L, 232R, 235RJX, 240L, 322L, 322R, 323L, 323LD, 323R, 323RJ, 324L, 324Lx, 324LDx, 324Rx, 325L, 325Lx, 325LDx, 325Rx, 325RDX, 325RJx, 326L, 326Lx, 326LDx, 326Rx, 326RJx, 326LS, 327LDX, 327LS, 525LS, 525LST

ARBOR: 12 mm / THREAD: LH | PART NO. 578 44 93-01 ARBOR: 10 mm / THREAD: LH | PART NO. 578 44 91-01

HARNESS SYSTEMS



STANDARD HARNESS FOR BRUSH CUTTERS

Adjustable, padded shoulder straps. Simple and effective quick release on chest. Firm hip support. Comes with Warning Sign.

PART NO. 537 21 63-02



BALANCE 35 HARNESS FOR BRUSH CUTTERS AND CLEARING SAWS

Wide padded straps and wide back plate reduce the load on the upper body. Equipped with a hip pad that has a traveling connection for maneuvering with minimum body movement. Simple and effective quick release on chest. Comes with Warning Sign.

PART NO. 537 27 57-04



BALANCE FLEX HARNESS FOR POLE PRODUCTS

The Balance Flex Harness evens the load distribution over both shoulders using wide padded shoulder straps. Simple and effective quick release on chest. Comes with Warning Sign.

PART NO. 578 44 99-01



BALANCE 55 HARNESS FOR BRUSH CUTTERS AND CLEARING SAWS

Wide padded straps and wide back plate reduce the load on the upper body. Equipped with a shock absorbing hip pad that has a traveling connection for maneuvering with minimum body movement. Simple and effective quick release on chest. Comes with Warning Sign.

PART NO. 537 27 57-03

BALANCE X™ (TRIO) HARNESS | FOR BRUSH CUTTERS AND CLEARING SAWS

Designed for optimal weight distribution. The weight is distributed and balanced efficiently between the shoulders, hips, chest and back. The wide padded shoulder straps also spread the load over large areas, which reduces the load on the shoulders and can be adjusted for a customized fit. A shock-absorbing hip pad with a traveling connection means that the machine can be maneuvered with fewer body movements and can be set for trimming or clearing angles. The hip pad also has a safety release within easy reach, so that the cutter can be detached with a simple action. Comes with Warning Sign.

PART NO. 505 40 62-01



BALANCE XT™ HARNESS | FOR BRUSH CUTTERS AND CLEARING SAWS

Designed for optimal weight distribution. Weight is distributed and balanced efficiently between the shoulders, hips, chest and back. The wide padded shoulder straps also spread the load over large areas, which reduces the load on the shoulders and can be adjusted for a customized fit for men and women, with the ability raise or lower the joining strap. A shock-absorbing hip pad with a traveling connection means that the machine can be maneuvered with fewer body movements and can be set for trimming or clearing angles. The hip pad also has a safety release within easy reach, so that the cutter can be detached with a simple action. Comes with Warning Sign.

PART NO. 523 04 82-01

EDGER BLADES



Marbain™ technology for increased strength and durability.

FITS THE FOLLOWING HUSQVARNA MODELS: 123LD, 125E, 125LDX, 225E, 322E, 325EX, 323EX, 326EX, 326ES, 326LDX, 327ES, 426EX.
FITS OTHER OEM'S.

ARBOR: 1" | PART NO. 531 30 02-33

GRASS AND BRUSH BLADES*



MULTI 255-3 10" 3 TOOTH BLADE

FITS THE FOLLOWING HUSQVARNA MODELS: 225L*, 225LD*, 225R, 225RJ, 232L*, 232R (BEFORE 8/02), 235R, 240F, 240R, 250R, 252RX

ARBOR: 20 mm | PART NO. 578 44 50-01

GRASS 255-3 10" 3 TOOTH BLADE

FITS THE FOLLOWING HUSQVARNA MODELS: 232R (AFTER 8/02), 235R, 322L*, 322R, 325LX*, 325R, 326LS, 327LS, 335LS, 336FR, 343R, 343F, 345RX, 345FX, 345FXT, 525LS, 525LST, 535LS

ARBOR: 1" | PART NO. 578 44 49-01

MULTI 300-3 12" 3 TOOTH BLADE

FITS THE FOLLOWING HUSQVARNA MODELS: 232R (AFTER 8/02), 235R, 322L*, 322R, 325LX*, 325R, 326LS, 327LS, 335RX, 335LS, 336FR, 343R, 345RX, 345FX, 345FXT, 525LS, 525LST, 535LS

ARBOR: 1" | PART NO. 578 44 45-01



GRASS 255-4 | 10" 4 TOOTH BLADE

FITS THE FOLLOWING HUSQVARNA MODELS: 120R, 125R, 125RJ, 132R, 132RJ, 225L*, 225LD*, 225R, 225RJ, 232L*, 232R (BEFORE 8/02), 235R, 240R

ARBOR: 20 mm | PART NO. 578443901

GRASS 255-4 | 10" 4 TOOTH BLADE

FITS THE FOLLOWING HUSQVARNA MODELS: 322L*, 322R, 323R, 323RJ, 324RX, 325LX*, 325R, 325RX, 325RDX, 325RJ, 325RJX, 326RX, 326RJX, 326LS, 327LS, 335LS, 525LS, 525LST, 535LS, 232R (AFTER 8/02)

ARBOR: 1" | PART NO. 578443701



GRASS 255-8 | 10" 8 TOOTH BLADE

FITS THE FOLLOWING HUSQVARNA MODELS: 120R, 125R, 125RJ, 132R, 132RJ, 225L*, 225LD*, 225R, 225RJ, 232L*, 232R (BEFORE 8/02), 235R, 240R

ARBOR: 20 mm | PART NO. 578 44 42-01

GRASS 255-8 | 10" 8 TOOTH BLADE

FITS THE FOLLOWING HUSQVARNA MODELS: 123L, 123LD, 128L, 128LDX, 129L, 129LDX, 232L, 232R (AFTER 8/02), 322L*, 322R, 323L, 323LD, 323R, 323RJ, 324L, 324LDX, 324RX, 325LX*, 325LDX, 325R, 325RX, 325RDX, 325RJ, 325RJX, 326L, 326LX, 326LDX, 326RX, 326RJX, 326LS, 327LS, 335LS, 525LS, 525LST, 535LS

ARBOR: 1" | PART NO. 578 44 40-01



MULTI 275-4 | 11" 4 TOOTH BLADE

FITS THE FOLLOWING HUSQVARNA MODELS: 232R, 235R, 240F, 240R, 245R, 245RX, 250R, 250RX, 252RX, 265RX, 343F

ARBOR: 20 mm | PART NO. 537 14 91-01

MULTI 275-4 | 11" 4 TOOTH BLADE

FITS THE FOLLOWING HUSQVARNA MODELS: 232R (AFTER 8/02), 235R, 322L*, 322R, 325LX*, 325R, 343R, 345RX, 345FX, 345FXT, 555FX, 545FX

ARBOR: 1" | PART NO. 578 44 47-01

*Acceptable only when unit is equipped with J-Handle or Barrier Bar Kit and proper guard.

WOODCUTTING BLADES*



MAXI S 200-26 8" 26 TOOTH BLADE

FITS THE FOLLOWING HUSQVARNA MODELS:
120R, 125R, 125RJ, 132R, 132RJ, 225R, 225RJ,
232R (BEFORE 8/02), 235R

ARBOR: 20 mm | PART NO. 578 44 32-01

MAXI S 200-26 8" 26 TOOTH BLADE

FITS THE FOLLOWING HUSQVARNA MODELS: 322R,
323R, 324RX, 325R, 326RX, 232R (AFTER 8/02),
343FR, 345FX, 345R, 345RX, 355FX, 545FX, 555FX

ARBOR: 1" | PART NO. 578 44 31-01

MAXI S 200-22 8" 22 TOOTH BLADE

FITS THE FOLLOWING HUSQVARNA MODELS:
240R, 245R, 245RX, 250R, 252RX, 265RX

ARBOR: 20 mm | PART NO. 578 44 29-01

MAXI S 225-22 9" 22 TOOTH BLADE

FITS THE FOLLOWING HUSQVARNA MODELS:
250R, 252RX, 265RX

ARBOR: 20 mm | PART NO. 578 44 30-01

Scarlet blades are specifically designed for faster, smoother cutting



SCARLET 200-22 8" 22 TOOTH BLADE

FITS THE FOLLOWING HUSQVARNA MODELS:
265RX

ARBOR: 20 mm | PART NO. 578 44 26-01

SCARLET 200-22 8" 22 TOOTH BLADE

FITS THE FOLLOWING HUSQVARNA MODELS:
322R, 323R, 324RX, 325R, 326RX, 232R
(AFTER 8/02), 335RX, 343FR, 345R, 345FX,
345RX, 355FX, 545FX, 555FX

ARBOR: 1" | PART NO. 578 44 25-01

SCARLET 225-24 9" 24 TOOTH BLADE

FITS THE FOLLOWING HUSQVARNA MODELS:
250R, 252RX, 265RX

ARBOR: 20 mm | PART NO. 578 44 28-01

SCARLET 225-24 9" 24 TOOTH BLADE

FITS THE FOLLOWING HUSQVARNA MODELS:
232R (AFTER 8/02), 322R, 323R, 324RX, 325R,
326RX, 343FR, 345FR, 345R, 345FX, 345RX,
345FX, 545FX, 555FX

ARBOR: 1" | PART NO. 578 44 27-01

BLADE CONVERSION KITS



Converts loop-handle trimmers to J-handles for grass and brush blade use.
Contains barrier bar, shoulder strap and suspension eyelet, blade locknut, support
flange, 255-4 Grass Blade, support cup, combination guard, and socket wrench.
Not to be used with Saw Blades!

FOR HUSQVARNA MODELS:

225L, 225LD, 232L

PART NO. 503 78 17-03

FOR HUSQVARNA MODELS:

322L, 323L, 324Lx,
325Lx, 326Lx, 326LS,
327LS, 525LS, 525LST

PART NO. 537 04 85-02

FOR HUSQVARNA MODELS:

335Lx, 535LS

PART NO. 544 24 96-02

*Acceptable only when unit is equipped with J-Handle or Barrier Bar Kit and proper guard.

NOTES

NOTES



© 2016 Husqvarna. All rights reserved. Specifications subject to change. 012016