

# Relays

## Q633 Plate-Mounted Relay Receptacle



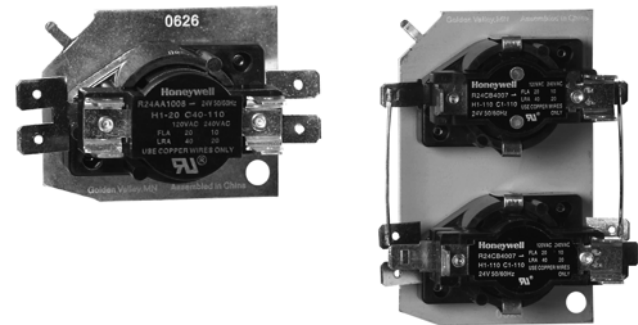
- For installing R4222, R8222 and R4228, R8228 relays on junction boxes.
- Use with appropriate relay and AT72D1683 or AT72D1691 SUPER TRADELINE Transformer.
  - Includes relay receptacle, cover and eight leadwires.

**Dimensions, Approximate:** 4 in. x 4 in. plate (102 x102 mm plate)

**Approvals:**  
**Canadian Standards Association:** Recognized  
**Underwriters Laboratories, Inc.** UL Component Recognized

	Product Number	Description
*	Q633A1007	Plate Mounted Relay Receptacle
* TRADELINE models • SUPER TRADELINE models		

## R24 Heat Sequencer



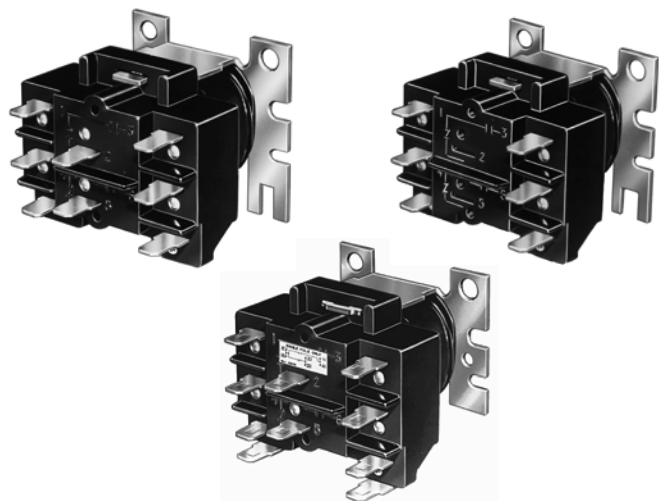
- Honeywell R24 Series Heat Sequencers are solid-state positive temperature coefficient (PTC) heaters that mount in any position. Quick-connect terminals speed up installation. In addition to the fact that, the R24 Series Heat Sequencers replace a wide range of models.
- Solid-state PTC Heaters
  - Quick-connect terminals
  - Shock and vibration resistant
  - Mounts in any position
  - Contact ratings - to 25 Amps at 120 or 240 Volts, and 12.5 Amps at 480 Volts
  - Full-load rating auxiliary contacts
  - Standard operating ambience temperature between -40 F and 165 F (-40 C and 73.8 C)
  - UL approved, CSA/CUR approval pending

**Electrical Connections (main):** Solder or screw type 1/4 in. quick connect

**Approvals:**  
**Underwriters Laboratories, Inc.** UL File 237660

Product Number	Application	Input/Control Voltage	Number of Switches/Devices	Number of On-Timings	Off-Timing Delay (sec)	On-Timing Delay (sec)	Electrical Ratings, Contacts (Resistive)
R24AA1008	Electric Heat	24V	1	1	40 - 110 sec	1 - 20 sec	25A Resistive and 14A Inductive at 120Vac
R24AA2006	Heat Pump - Air Handler	24V	1	1	65-115: Cool	1-25: Heat	25A Resistive and 14A Inductive at 120Vac
R24AA3004	Electric Heat	24V	1	1	1 - 30 sec	30 - 90 sec	25A Resistive and 14A Inductive at 120Vac
R24BA1006	Electric Heat	24V	2	1	40 - 110 sec (1st and 2nd switch)	1 - 20 sec (1st and 2nd switch)	25A Resistive and 14A Inductive at 120Vac
R24BA3002	Electric Heat	24V	2	1	1 - 30 sec (1st and 2nd switch)	30 - 90 sec (1st and 2nd switch)	25A Resistive and 14A Inductive at 120Vac
R24CB4007	Electric Heat	24V	3	2	1 - 110 sec (1st, 2nd and 3rd switch)	1 - 110 sec (1st, 2nd and 3rd switch)	25A Resistive and 14A Inductive at 120Vac
R24DB4005	Electric Heat	24V	4	2	1 - 110 sec (1st, 2nd, 3rd and 4th switch)	1 - 110 sec (1st, 2nd, 3rd and 4th switch)	25A Resistive and 14A Inductive at 120Vac
R24ED5007	Electric Heat	24V	5	4	1 - 160 sec (1st, 2nd, 3rd and 4th switch)	1 - 160 sec (1st, 2nd, 3rd and 4th switch)	25A Resistive and 14A Inductive at 120Vac

## R4222; R8222 General Purpose and R8228 Heavy Duty Switching Relays



Provide heavy duty switching for refrigeration and air conditioning equipment, appliances, vending machines and similar applications.

- Molded terminal numbers and circuit diagram on top of relay provide easy identification for wiring and checking system operation.
- Untaped coil assures cooler operation.
- Laminated magnet construction for higher efficiency.
- Base designed for easy replacement of competitive relays.
- Double quick-connect coil terminals.
- Plug compatible with Steveco 90-340 and Mars 90340.

**Dimensions, Approximate:** 1 7/8 in. high x 2 5/32 in. wide x 2 3/8 in. deep (48 mm high x 55 mm wide x 60 mm deep.)

**Electrical Connections (main):** 1/4 in. quick-connect terminals

**Temperature Rating:** -20 F to +150 F (-29 C to +66 C)

**Approvals:**

**Canadian Standards Association:** Approved

**Underwriters Laboratories, Inc.** UL Component Recognized

**Accessories:**

**129384A** Case and Cover Assembly

Residential  
Combustion Controls

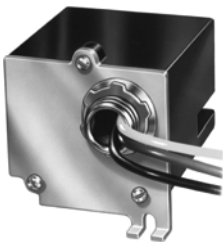
	Electrical Ratings, Contacts			Pilot Duty Ratings
	(Full Load)	(Locked Rotor)	(Resistive)	
<b>R4222B, R4222D, R4222N, R8222B, R8222D, R8222N, R8222U, R8222V</b>	12 A @ 120 Vac; 6 A @ 208 Vac, 240 Vac, 277 Vac; 3 A @ 480 Vac	60 A @ 120 Vac; 35 A @ 208 Vac, 240 Vac, 277 Vac; 18 A @ 480 Vac	20.8 A @ 120 Vac, 208 Vac, 240 Vac, 277 Vac; 10 A @ 480 Vac	Minimum: 3 VA @ 24 Vac, 120 Vac, & 480 Vac; Maximum: 25 VA @ 24 Vac, 125 VA @ 120 Vac, 240 Vac, & 480 Vac; Resistive: 3 A @ 277 Vac (0.75 power factor); Powerpile: (Normally Open Contacts Only) 0.25 A @ 0.25 to 12 Vdc
<b>R8228A</b>	16 A @ 120 Vac; 12 A @ 277 Vac; 18 A @ 208 Vac, 240 Vac; 5 A @ 480 Vac	96 A @ 120 Vac; 72 A @ 208 Vac, 240 Vac, 277 Vac; 30 A @ 480 Vac	25 A @ 120 Vac, 208 Vac, 240 vac, 277 Vac; 15 A @ 480 Vac	—
<b>R8228B</b>	16/18 A @ 120 Vac; 18 A @ 208 Vac, 240 Vac; 12 A @ 277 Vac; 5 A @ 480 Vac	96/72 A @ 120 Vac; 72 A @ 208 Vac, 240 Vac, 277 Vac; 30 A @ 480 Vac	25 A @ 120 Vac; 208 Vac, 240 Vac, 277 Vac; 12.5 A @ 480 Vac	—
<b>R8228D</b>	5.5 A @ 120 Vac, 208 Vac, 240 Vac, 277 Vac; 3.0 A @ 480 Vac	15 A @ 120 Vac, 208 Vac, 240 Vac, 277 Vac; 8 A @ 480 Vac	25 A @ 120 Vac; 208 Vac, 240 Vac, 277 Vac; 12.5 A @ 480 Vac	—

* Product Number	Coil Ratings Voltage	Frequency	Switching
* R4222B1082	120 V	50 Hz; 60 Hz	SPDT
* R4222D1013	120 V	50 Hz; 60 Hz	DPDT
* R4222D1021	208V; 240 V	50 Hz; 60 Hz	DPDT
* R4222N1002	120 V	50 Hz; 60 Hz	DPDT - Pilot Duty
* R8222B1067	24 Vac	50 Hz; 60 Hz	SPDT
* R8222D1014	24 Vac	50 Hz; 60 Hz	DPDT
* R8222N1011	24 Vac	50 Hz; 60 Hz	DPDT - Pilot Duty
* R8222U1079	24 V	50 Hz; 60 Hz	DPST N.O. (1 P&1 P duty)
* R8222V1003	24 Vac	50 Hz; 60 Hz	DPDT (1 P&1 PDuty)
R8228A1006	24 V	50 Hz; 60 Hz	SPST N.O.
* R8228B1012	24 Vac	50 Hz; 60 Hz	SPDT
R8228D1018	24 Vac	50 Hz; 60 Hz	DPST N.O.

\* TRADELINE models • SUPER TRADELINE models

# Relays

## R4225; R8225 Fan Relay



**Dimensions, Approximate:** 2 11/16 in. high x 2 1/2 in. wide x 3 7/16 in. deep (68 mm high x 64 mm wide x 87 mm deep)

**Electrical Connections (main):** Leadwires

**Temperature Rating:** 115 F (46 C)

Provide general purpose and heavy duty switching for refrigeration and air conditioning equipment, appliances, vending machines and similar applications.

- Molded terminal numbers and circuit diagram on top of relay provide easy identification for wiring and checking system operation.
- Untaped coil assures cooler operation.
- Laminated magnet construction for higher efficiency.
- Base designed for easy replacement of competitive relays.
- Double quick-connect coil terminals.
- Plug compatible with Steveco 90-340 and Mars 90340.

**Approvals:**

**Canadian Standards Association:** Certified: File No. LR95329-1  
**Underwriters Laboratories, Inc.** UL Listed: File No. E14480, Vol. 1, Sec. 3, Guide No. NLDX

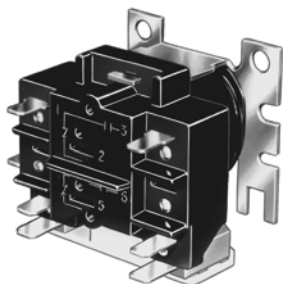
**Accessories:**

**129384A** Case and Cover Assembly

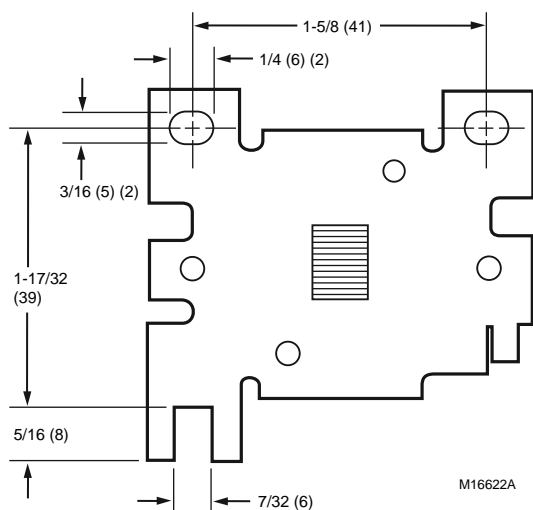
	Electrical Ratings, Contacts		
	(Full Load)	(Locked Rotor)	(Resistive)
R4225A, R8225A	N.O. 14.0A, N.C. 14.0A, Aux. 3.0A @ 120 Vac; N.O. 8.0A, N.C., 7.0A, Aux. 2.0A @ 240 Vac	N.O. 84.0 A, N.C. 84.0 A, Aux. 18.0 A @ 120 Vac; N.O. 48.0 A, N.C. 42.0 A, Aux. 12.0 A @ 240 Vac	N.O. 16.0 A, N.C. 14.0 A, Aux. 3.0 A @ 120 Vac; N.O. 8.0 A, N.C. 7.0 A, Aux. 2.0 A @ 240 Vac
R8225D	N.O. 14.0 A, Aux. 3.0 A @ 120 Vac; N.O. 8.0 A, Aux. 2.0 A @ 240 Vac	N.O. 84.0 A, Aux. 18.0 A @ 120 Vac; N.O. 48.0 A, Aux. 12.0 A @ 240 Vac	N.O. 16.0 A, Aux. 3.0 A @ 120 Vac N.O. 8.0 A, Aux. 2.0 A @ 240 Vac

Product Number	Coil Ratings Voltage	Frequency	Switching
R4225A1008	120 V	60 Hz	SPDT, 1 N.O., 1 N.C.
* R8225A1017	24 Vac	60 Hz	SPDT
R8225D1003	24 Vac	60 Hz	DPST N.O.
* TRADELINE models • SUPER TRADELINE models			

## R8229 Electric Heat Relay



Dimensions in inches (millimeters)



### Normally Closed Relays And Contactors For Load Control Systems.

- Close and leave load operating in case of wiring or control problem, or relay malfunction.
- Consume no power while load is powered; require power only to shed load.
- Operate directly from a pilot duty rated relay in the load control system.

**Dimensions, Approximate:** 2 3/16 in. high x 2 3/32 in. wide x 2 1/4 in. deep (56 mm high x 53 mm wide x 57 mm deep.)

**Electrical Connections (main):** #10 combination head screws

**Temperature Rating:** -40 F to +165 F (-40 C to +74 C)

### Approvals:

**Canadian Standards Association:** Recognized

**Underwriters Laboratories, Inc.** UL Component Recognized

Residential  
Combustion Controls

Electrical Ratings, Contacts				
(Full Load)		(Locked Rotor)		(Resistive)
7.0 A @ 120 Vac, 208 Vac, 240 Vac, 277 Vac 2.8 A @ 600Vac; 3.5 A @ 480 Vac		35 A @ 120 Vac, 208 Vac, 240 Vac, 277 Vac; 14 A @ 600 Vac; 17.5 A @ 480 Vac		25 A @ 120 Vac, 208 Vac, 240 Vac, 277 Vac; 10.0 A @ 600 Vac; 12.5 A @ 480 Vac
Product Number	Coil Ratings Voltage	Frequency	Switching	Includes
R8229A1005	24 Vac	60 Hz	DPST	—
• R8229A1021	24 Vac	60 Hz	DPST	Extra Mounting Hardware
* TRADELINE models • SUPER TRADELINE models				

# Relays

## R8330 Electric Furnace Sequencer



One control switches a fan and up to three elements on and off in sequence.

- Isolated fan switch has positive interlock to assure fan is on when the element is on, and fan is off when the element is off.
- Replaces any of the ten models in our line and many competitive devices.
- Combination rating on the first element switch allows replacing devices having fan and first element controlled by the same switch without rewiring the furnace.
- Auxiliary switch controls a second R8330 in application with more than three elements.
- Cycles ON within two minutes, OFF within four minutes.
- Ten-second minimum delay between stages (makes sequence and break sequence.)
- Timings meet EEI-NEMA and ARI 280 Standards.

**Dimensions, Approximate:** 3 1/16 in. high x 4 13/16 in. wide x 2 11/32 in. deep (78 mm high x 122 mm wide x 60 mm deep.)

**Electrical Connections (main):** terminals

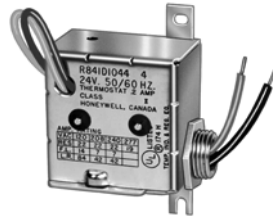
**Temperature Rating:** -20 F to +150 F (-29 C to +66 C)

**Approvals:**

**Canadian Standards Association:** Certified  
**Underwriters Laboratories, Inc.** UL Listed

Electrical Ratings, Contacts			
(Full Load)		(Locked Rotor)	
3/4 hp; 6.9 A @ 120 Vac, 208 Vac, 240 Vac; 1/3 hp; 7.2 A @ 120 vac; 4.9 A @ 277 Vac		3/4 hp; 41.4 A @ 120 Vac, 208 Vac, 240 Vac 1/3 hp; 43.2 a @ 120 Vac; 29.4 A @ 277 Vac	
	Product Number	Coil Ratings Voltage	Frequency
*	R8330D1039	24 Vac	60 Hz
* TRADELINE models • SUPER TRADELINE models			

## R841 Electric Heating Relay



Use with two-wire, 24 Vac thermostat to control electric heating equipment such as baseboard, ceiling cable and duct heaters.

- Operate with each cycle of the thermostat (4 to 6 cycles per hour).
- Each relay switches up to a 5,000 W load.
- Contacts make and break in about 75 seconds.
- Mount in any position.
- Includes 1/2 in. (13 mm) male conduit bushing.

**Dimensions, Approximate:** 3 7/8 in. high x 2 13/16 in. wide x 1 1/2 in. deep (98 mm high x 71 mm wide x 38 mm deep)

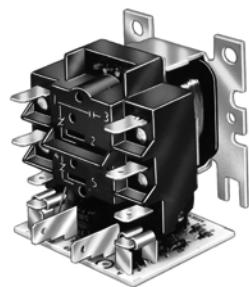
**Temperature Rating:** -20 F to +150 F (-29 C to +66 C)

**Approvals:**

**Canadian Standards Association:** Certified  
**Underwriters Laboratories, Inc.** UL Listed

Electrical Ratings, Contacts						
(Full Load)			(Locked Rotor)		(Resistive)	
14 A @ 120 Vac; 7.0 A @ 208 Vac, 240 Vac, 277 Vac			84 A @ 120 Vac; 42 A @ 208 Vac, 240 Vac, 277 Vac		22 A @ 120 Vac, 208 Vac, 240 Vac; 19 a @ 277 Vac	
	Product Number	Coil Ratings Voltage	Frequency	Switching	Electrical Connections (main)	Includes
	R841C1029	240 V	50 Hz; 60 Hz	SPST	Terminals	Enclosure w/conduit bushing.
	R841C1151	600 Vac	50 Hz; 60 Hz	SPST	Leadwires	Enclosure w/ conduit bushing and an integral transformer.
*	R841C1169	208 V; 240 Vac	50 Hz; 60 Hz	SPST	Leadwires	Enclosure w/ conduit bushing and an integral transformer.
*	R841C1227	24 V	50 Hz; 60 Hz	SPST	Leadwires	—
*	R841D1036	24 V	50 Hz; 60 Hz	SPST	Leadwires	Enclosure w/conduit bushing.
*	R841E1068	24 V	50 Hz; 60 Hz	SPST	Leadwires	Enclosure w/conduit bushing and integral transformer; dual load.
* TRADELINE models • SUPER TRADELINE models						

ST82 Fan Manager



Use in compressor-run air conditioning, heat pump systems and heating-cooling systems. Delays the indoor blower shutoff after the compressor has shut off.

- Eighty-second delay on break.
- Combination electronic time delay board and R8222 relay saves wiring time.
- Molded terminal numbers and circuit diagram on top of relay and letter-coded terminals on time delay board provide easy identification for wiring and system checkout.
- Laminated magnet construction for high efficiency.
- Reduces stratification and saves energy.

**Dimensions, Approximate:** 2 7/32 in. high x 2 1/16 in. wide x 2 9/16 in. deep (56 mm high x 52 mm wide x 65 mm deep)  
**Electrical Connections (main):** 1/4 in. quick-connect terminals  
**Temperature Rating:** -20 F to +150 F (-29 C to +66 C)

**Approvals:**  
**Canadian Standards Association:** Certified: File No. LR95329-17  
**Underwriters Laboratories, Inc.** UL Listed: File No. MP466, Vol. 22, Sec. 1, Guide No. MBPR2

Electrical Ratings, Contacts		
(Full Load)	(Locked Rotor)	(Resistive)
12 A @ 120 Vac; 3 A @ 480 Vac; 6 A @ 208 Vac, 240 Vac, 277 Vac	60 A @ 120 Vac; 18 A @ 480 Vac; 35 A @ 208 Vac, 240 Vac, 277 Vac	15 A @ 120 Vac; 15 A @ 208 Vac, 240 Vac, 277 Vac; 10 A @ 480 Vac

	Product Number	Coil Ratings Voltage	Frequency	Delay Timing	Switching
*	ST82D1004	24 Vac	50 Hz; 60 Hz	80 sec	DPDT
* TRADELINE models • SUPER TRADELINE models					

Residential  
Combustion Controls