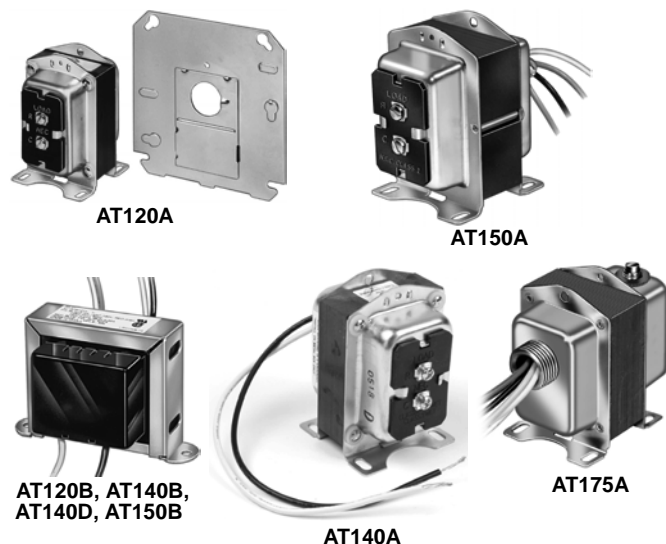


Transformers

AT120; AT140; AT150A,B; AT175A General Purpose Transformer



Provide power to 24 Vac circuits in heating/cooling control systems. Intended for use in systems with predictable, uniform loads. Can be used in any application that does not exceed the listed ratings.

- Color-coded leadwires for primary connections and screw terminals for secondary connections, fixed 1/4 inch (6 mm) male quick-connects or color-coded leadwires for both primary and secondary, are standard.
- Meet NEC Class 2 requirements.
- Meet Underwriters Laboratories Inc. Standard UL 1585 and are identified. Class 2 not wet, Class 3 wet.

Temperature Rating: -20 F to +105 F (-29 C to +41 C)

Frequency: 60 Hz

NEMA Rating

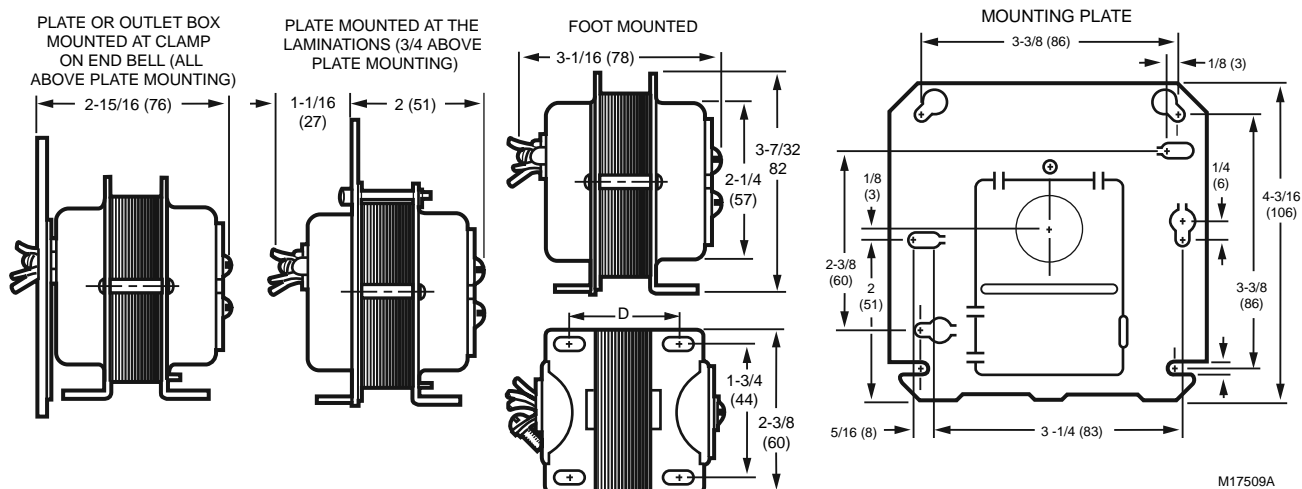
AT175A1008 only: NEMA type E

Approvals:

Canadian Standards Association: CSA Certified: A & B models.

Underwriters Laboratories, Inc. UL Listed: A,C,F models. File # E14881

Dimensions in inches (millimeters)



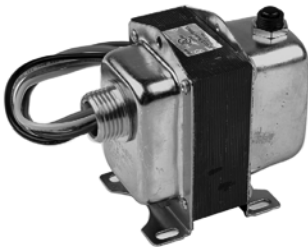
Product Number	Electrical Ratings			Electrical Connections (main)		Mounting	Dimensions, Approximate		Includes
	Voltage		Output	Primary	Secondary		(inch)	(mm)	
	Primary	Secondary							
AT120A1004	120 Vac, 208 Vac, 240 Vac	27 V.O.C.	24 Vac at 20 VA	9 in. leadwires	(2) screw terminals	Foot mounted, plate mounted on 2x4 in. or 4x4 in. outlet box, clamp mounted using outlet box knockout, or panel mounted	2 7/8 in. high x 1 7/8 in. wide x 2 15/16 in. deep	73 mm high x 48 mm wide x 75 mm deep	—
AT120B1028	120 Vac	27 V.O.C.	24 Vac at 20 VA	9 in. leadwires	9 in. leadwires	Foot-mounted	1 11/16 in. high x 3 3/16 in. wide x 1 3/4 in. deep	43 mm high x 81 mm wide x 75 mm deep	Metal end bells
AT140A1000	120 Vac	27 V.O.C.	24 Vac at 40 VA	9 in. leadwires	(2) screw terminals	Foot mounted, plate mounted on 2x4 in. or 4x4 in. outlet box, clamp mounted using outlet box knockout, or panel mounted	3 3/16 in. high x 2 3/8 in. wide x 3 1/8 in. deep	81 mm high x 60 mm wide x 79 mm deep	Metal end bells
AT140A1018	120 Vac, 208 Vac, 240 Vac	27 V.O.C.	24 Vac at 40 VA	9 in. leadwires	(2) screw terminals	Foot mounted, plate mounted on 2x4 in. or 4x4 in. outlet box, clamp mounted using outlet box knockout, or panel mounted	3 3/16 in. high x 2 3/8 in. wide x 3 1/8 in. deep	81 mm high x 60 mm wide x 79 mm deep	Metal end bells

Transformers

Residential
Combustion Controls

Product Number	Electrical Ratings			Electrical Connections (main)		Mounting	Dimensions, Approximate		Includes
	Voltage		Output	Primary	Secondary		(inch)	(mm)	
	Primary	Secondary							
AT140B1016	120 Vac	27 V.O.C.	24 Vac at 40 VA	1/4 in. male quick-connects	1/4 in. male quick-connects	Foot-mounted	1 11/16 in. high x 3 1/2 in. wide x 1 3/4 in. deep	43 mm high x 89 mm wide x 75 mm deep	Plastic end caps
AT140B1206	120 Vac	27 V.O.C.	24 Vac at 40 VA	9 in. leadwires	9 in. leadwires	Foot-mounted	1 11/16 in. high x 3 1/2 in. wide x 1 3/4 in. deep	43 mm high x 89 mm wide x 75 mm deep	Plastic end caps
AT140B1214	120 Vac, 208 Vac, 240 Vac	27 V.O.C.	24 Vac at 40 VA	9 in. leadwires	9 in. leadwires	Foot-mounted	1 11/16 in. high x 3 1/2 in. wide x 1 3/4 in. deep	43 mm high x 89 mm wide x 75 mm deep	Plastic end caps
AT140D1012	120 Vac	27 V.O.C.	24 Vac at 40 VA	9 in leadwires	9 in. leadwires	integral 4 x 4 in. mounting plate fits 2 x 4 in. or 4 x 4 in. outlet box.	2 5/8 in. high x 2 1/4 in. wide x 1 15/16 in. deep	67 mm high x 57 mm wide x 49 mm deep	Metal end bells
AT150A1007	120 Vac, 208 Vac, 240 Vac	27.5 V.O.C.	24 Vac at 50 VA	9 in. leadwires	(2) screw terminals	Foot mounted, plate mounted on 2x4 in. or 4x4 in. outlet box, clamp mounted using outlet box knockout, or panel mounted	1 11/16 in. high x 3 3/16 in. wide x 1 3/4 in. deep	43 mm high x 81 mm wide x 75 mm deep	Metal end bells
AT150B1146	120 Vac, 208 Vac, 240 Vac	—	24 Vac at 50 VA	9 in leadwires	9 in. leadwires	Foot-mounted	1 11/16 in. high x 3 1/2 in. wide x 1 3/4 in. deep	43 mm high x 89 mm wide x 75 mm deep	—
AT150B1252	277 Vac	27.5 V.O.C.	24 Vac at 50 VA	9 in. leadwires with 1/4 in. male quick-connects	9 in. leadwires with 1/4 in. male quick-connects with plastic (2) end covers	Foot-mounted	1 11/16 in. high x 3 1/2 in. wide x 1 3/4 in. deep	43 mm high x 89 mm wide x 75 mm deep	Plastic end caps
AT175A1008	120 Vac, 208 Vac, 240 Vac	27.5 V.O.C.	24 Vac at 75 VA	9 in. leadwires	(2) screw terminals	Foot mounted, plate mounted on 2x4 in. or 4x4 in. outlet box, clamp mounted using outlet box knockout, or panel mounted	3 3/16 in. high x 2 3/8 in. wide x 3 5/8 deep	81 mm high x 60 mm wide x 92 mm deep	Metal end bells

AT150F Circuit Breaker Transformer



Temperature Rating: -20 F to +105 F (-29 C to +41 C)

Frequency: 60 Hz

Includes: Button for manually resetting the circuit breaker and metal end bells.

Electrical Connections (main)

Primary: 9 in. leadwires

Secondary: 9 in. leadwires

Provide power to 24 Vac circuits in heating/cooling control systems. Intended for use in systems with predictable, uniform loads. Can be used in any application that does not exceed the listed ratings.

- Rated at 50 VA.
- Color-coded leadwires for primary connections and screw terminals for secondary connections, fixed 1/4 inch (6 mm) male quick-connects or color-coded leadwires for both primary and secondary, are standard.
- Meet NEC Class 2 requirements.
- Meet Underwriters Laboratories Inc. Standard UL 1585 and are identified. Class 2 not wet, Class 3 wet.

Approvals:

Canadian Standards Association: Certified: File No. LR95329-18

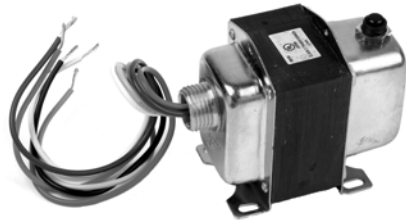
Underwriters Laboratories, Inc. UL Listed: File no. E14881, Guide no. XOKV.

	Product Number	Electrical Ratings			Mounting	Dimensions, Approximate	
		Voltage		Output		(inch)	(mm)
		Primary	Secondary				
*	AT150F1022	120 Vac, 208 Vac, 240 Vac	27.5 V.O.C.	24 Vac at 50 VA	Includes 1/2 14 NPSM conduit connector and lock nut for mounting on plate or panel (not included) with 7/8 in. knockout, and feet for surface mount.	3 3/16 in. high x 2 3/16 in. wide x 3 5/8 in. deep	81 mm high x 56 mm wide x 93 mm deep
*	AT150F1030	208 Vac, 277 Vac, 480 Vac	27.5 V.O.C.	24 Vac at 50 VA	Includes 1/2 14 NPSM conduit connector and lock nut for mounting on plate or panel (not included) with 7/8 in. knockout, and feet for surface mount.	3 3/16 in. high x 2 3/16 in. wide x 3 5/8 in. deep	81 mm high x 56 mm wide x 93 mm deep

* TRADELINE models • SUPER TRADELINE models

Transformers

AT175F Circuit Breaker Transformer



Temperature Rating: -20 F to +105 F (-29 C to +41 C)
Frequency: 60 Hz

Electrical Connections (main)

Primary: 9 in. leadwires
Secondary: 9 in. leadwires

Provide power to 24 Vac circuits in heating/cooling control systems. Intended for use in systems with predictable, uniform loads. Can be used in any application that does not exceed the listed ratings.

- Rated at 75 VA.
- Color-coded leadwires for primary connections and screw terminals for secondary connections, fixed 1/4 inch (6 mm) male quick-connects or color-coded leadwires for both primary and secondary, are standard.
- Meet NEC Class 2 requirements.
- Meet Underwriters Laboratories Inc. Standard UL 1585 and are identified. Class 2 not wet, Class 3 wet.

Includes: Button for manually resetting the circuit breaker and metal end bells.

Approvals:

Canadian Standards Association: CSA Certified: A & B models.
Underwriters Laboratories, Inc. UL Listed: A,C,F models. File # E14881

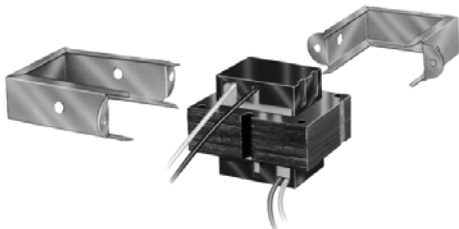
Product Number	Electrical Ratings			Mounting	Dimensions, Approximate	
	Voltage		Output		(inch)	(mm)
	Primary	Secondary				
* AT175F1023	120 Vac, 208 Vac, 240 Vac	27.5 V.O.C.	24 Vac at 75 VA	Includes 1/2 14 NPSM conduit connector and lock nut for mounting on plate or panel (not included) with 7/8 in. knockout, and feet for surface mount.	3 3/16 in. high x 2 3/16 in. wide x 3 15/16 in. deep	81 mm high x 56 mm wide x 102 mm deep
* AT175F1031	208 Vac, 277 Vac, 480 Vac	27.5 V.O.C.	24 Vac at 75 VA	Includes 1/2 14 NPSM conduit connector and lock nut for mounting on plate or panel (not included) with 7/8 in. knockout, and feet for surface mount.	3 3/16 in. high x 2 3/16 in. wide x 3 15/16 in. deep	81 mm high x 56 mm wide x 102 mm deep

* TRADELINE models

• SUPER TRADELINE models

* TRADELINE models • SUPER TRADELINE models

AT20; AT40 NEMA Standard Universal Stripped-Down Transformer



Temperature Rating: -20 F to +105 F (-29 C to +41 C)
Frequency: 50 Hz; 60 Hz

Electrical Connections (main)

Primary: 9 in. color coded primary and secondary leadwires
Secondary: 9 in. color coded primary and secondary leadwires

Power a 24V control system; for direct mounting, or horizontal or vertical foot-mounting.

- Channel frame mounting feet and slots allow for the three mounting positions.
- Color-coded leadwires for primary connections.
- Overload protection provided.
- Energy limiting, meet NEMA DC20-1992 Standard.
- Meet NEC Class 2 not wet, Class 3 wet and U.L. 1585 requirements.
- Mount within proper enclosure.

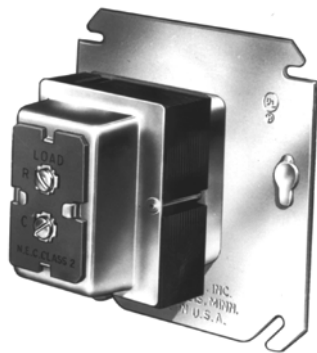
Approvals:

Canadian Standards Association: Certified
Underwriters Laboratories, Inc. UL Component Recognized.

Product Number	Electrical Ratings			NEMA Rating	Mounting	Dimensions, Approximate	
	Voltage		Output			(inch)	(mm)
	Primary	Secondary					
* AT20A1123	120 Vac	26.5 V.O.C.	24 Vac at 19 VA	NEMA type B	Channel Frame Mounting allows for Direct, Horizontal, or Vertical Foot mounting.	2 in. high x 2 1/4 in. wide x 1 7/8 in. deep	50.8 mm high x 57 mm wide x 47.6 mm deep
* AT40A1121	120 Vac	26.5 V.O.C.	24 Vac at 40 VA	NEMA type D	Channel Frame Mounting allows for Direct, Horizontal, or Vertical Foot mounting.	2 3/32 in. high x 2 5/8 in. wide x 2 3/16 in. deep	53 mm high x 67 mm wide x 56 mm deep
* AT40A1139	240 Vac	26.5 V.O.C.	24 Vac at 40 VA	NEMA type D	Channel Frame Mounting allows for Direct, Horizontal, or Vertical Foot mounting.	2 3/32 in. high x 2 5/8 in. wide x 2 3/16 in. deep	53 mm high x 67 mm wide x 56 mm deep
* TRADELINE models • SUPER TRADELINE models							

* TRADELINE models • SUPER TRADELINE models

AT72 NEMA Standard Transformer



- 24V control circuit step-down transformer designed to power any 24V control system, including thermostats, gas valves and relays.
- Override protection provided.
 - Color-coded leadwires for primary connections.
 - Energy limiting, meets NEMA Standard DC20-1992.
 - Transformer is marked NEMA Type D.
 - Meets NEC Class 2 not wet, Class 3 wet and U.L. 1585 requirements.
 - Mount within proper enclosure.

Temperature Rating: -20 F to +105 F (-29 C to +41 C)

Frequency: 50 Hz; 60 Hz

NEMA Rating: Type D

Approvals:

Canadian Standards Association: Certified

N.E.C. NEC Approved.

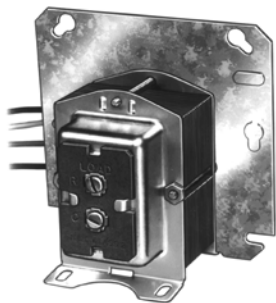
Underwriters Laboratories, Inc. UL Component Recognized.

Residential
Combustion Controls

Product Number	Electrical Ratings			Electrical Connections (main)		Mounting	Dimensions, Approximate	
	Voltage		Output	Primary	Secondary		(inch)	(mm)
	Primary	Secondary						
AT72D1006	120 Vac	26.5 V.O.C.	24 Vac at 40 VA	9 in. leadwires	(2) screw terminals	4 x 4 in. plate-mounted, protruding into junction box	3 7/32 in. high x 2 7/32 in. wide x (1 1/16 into plate x 2 in. above plate) deep	81.8 mm high x 56.4 mm wide x (27 mm into box x 50.8 mm above box) deep
AT72D1188	120 Vac	26.5 V.O.C.	24 Vac at 40 VA	9 in. leadwires	9 in. leadwires	4 x 4 in. plate mounted without protruding into junction box.	3 7/32 in. high x 2 7/32 in. wide x 2 15/16 in. deep	81.8 mm high x 56.4 mm wide x 74.6 mm deep
• AT72D1683	120 Vac	26.5 V.O.C.	24 Vac at 40 VA	9 in. leadwires	(2) screw terminals	Can be foot mounted, plate mounted on 4 x 4 in., 4 in. octagon, or 2 x 4 in. electrical boxes (transformer all above plate or 3/4 above plate); or clamp mounted via a junction box knockout.	3 7/32 in. high x 2 7/32 in. wide x 3 1/16 in. deep	81.8 mm high x 56.4 mm wide x 77.8 mm deep
• AT72D1691	208 Vac, 240 Vac	26.5 V.O.C.	24 Vac at 40 VA	9 in. leadwires	(2) screw terminals	Can be foot mounted, plate mounted on 4 x 4 in., 4 in. octagon, or 2 x 4 in. electrical boxes (transformer all above plate or 3/4 above plate); or clamp mounted via a junction box knockout.	3 7/32 in. high x 2 7/32 in. wide x 3 1/16 in. deep	81.8 mm high x 56.4 mm wide x 77.8 mm deep
* TRADELINE models • SUPER TRADELINE models								

Transformers

AT87 NEMA Standard Transformer



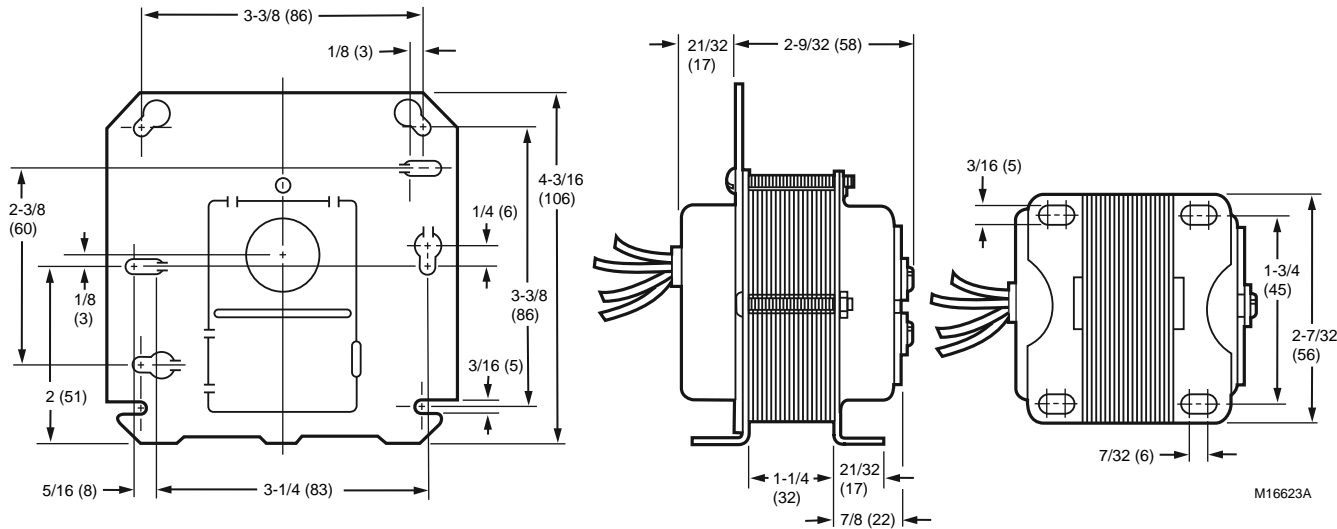
Used primarily for powering 24V air conditioning circuits. Can also be used in other applications that do not exceed the listed ratings.

- Meets NEC Class 2 not wet, Class 3 wet and UL 1585 requirements.
- Transformer marked NEMA Type E.
- Overload protection provided.
- Color-coded leadwires for primary connections.

Temperature Rating: -20 F to +105 F (-29 C to +41 C)
Frequency: 50 Hz; 60 Hz
NEMA Rating: NEMA type E

Approvals:
Canadian Standards Association: Certified
Underwriters Laboratories, Inc. UL Component Recognized.

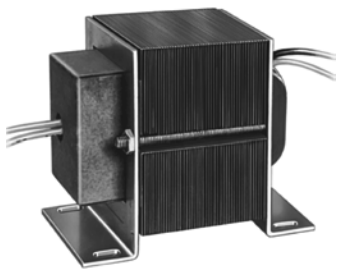
Dimensions in inches (millimeters)



Product Number	Electrical Ratings			Electrical Connections (main)		Mounting	Dimensions, Approximate		Includes
	Voltage		Output	Primary	Secondary		(inch)	(mm)	
	Primary	Secondary							
AT87A1049	120 Vac	26.5 V.O.C.	24 Vac at 48 VA	12 in. leadwires	12 in. leadwires	Foot-mounted	2 15/16 in. deep x 2 7/32 wide	74.6 mm deep x 65.4 mm wide	Energy limiting overload protection
• AT87A1106	120 Vac, 208 Vac, 240 Vac	26.5 V.O.C.	24 Vac at 48 VA	13 in. leadwires	(2) screw terminals	Foot mounted or 4x4 in plate.	2 15/16 in. deep x 2 7/32 wide	74.6 mm deep x 65.4 mm wide	Built-in protection. Primary winding burnout.
AT87A1155	480 Vac	26.5 V.O.C.	24 Vac at 48 VA	12 in. leadwires	12 in. leadwires	Foot-mounted	2 15/16 in. deep x 2 7/32 wide	74.6 mm deep x 65.4 mm wide	Energy limiting overload protection
AT87A1189	277 Vac	26.5 V.O.C.	24 Vac at 48 VA	12 in. leadwires	12 in. leadwires	Foot-mounted	2 15/16 in. deep x 2 7/32 wide	74.6 mm deep x 65.4 mm wide	Energy limiting overload protection

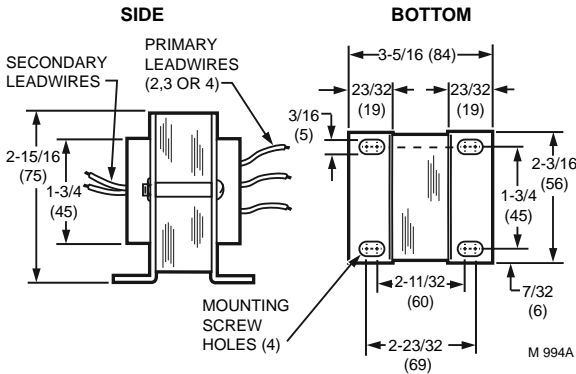
* TRADELINE models • SUPER TRADELINE models

AT88 Transformer



- Powers 24 Vac air conditioning circuits and other applications that do not exceed the listed ratings.
- Meets NEC Class 2 not wet, Class 3 wet and U.L. 1585 requirements.
 - Overload protection provided.
 - Color-coded leadwires for primary connections.

Dimensions in inches (millimeters)



Temperature Rating: -20 F to +105 F (-29 C to +41 C)
Frequency: 50 Hz; 60 Hz

Electrical Connections (main)
Primary: 12 in. leadwires
Secondary: 12 in. leadwires

Approvals:
Canadian Standards Association: Certified
Underwriters Laboratories, Inc. UL Component Recognized.

Residential
Combustion Controls

Product Number	Electrical Ratings			Mounting	Dimensions, Approximate		Includes
	(Primary Voltage)	(Secondary Voltage)	(Output)		(inch)	(mm)	
AT88A1005	120 Vac	26.5 V.O.C.	24 Vac at 75 VA	Foot-mounted	2 15/16 in. high x 2 3/16 in. wide x 3 5/16 in. deep	75 mm high 56 mm wide x 84 mm deep	Internally fused secondary for overload protection.
* AT88A1021	208 Vac, 240 Vac	26.5 V.O.C.	24 Vac at 75 VA	Foot-mounted	2 15/16 in. high x 2 3/16 in. wide x 3 5/16 in. deep	75 mm high 56 mm wide x 84 mm deep	Internally fused secondary for overload protection.
AT88A1047	480 Vac	26.5 V.O.C.	24 Vac at 75 VA	Foot-mounted	2 15/16 in. high x 2 3/16 in. wide x 3 5/16 in. deep	75 mm high 56 mm wide x 84 mm deep	Internally fused secondary for overload protection.
* TRADELINE models • SUPER TRADELINE models							