

# DG5010

## Rear Inlet Spray Gun



DG5010

**SPECIFICATIONS**

Part Number:	<b>DG5010</b>	
Maximum Volume:	10.0 GPM	
Maximum Pressure:	5000 PSI	
Maximum Temperature:	320° F	
Port Sizes:	Inlet	3/8" NPT-F
	Outlet	1/4" NPT-F
Dimensions:	9.27" x 5.67" x 1.44"	
Weight:	1.4 lbs.	
Material:	Brass, Stainless Steel, Plastic, Viton	
<b>REPAIR KIT - DG5010</b>	<b>2100249</b>	

**FEATURES**

- Thermoplastic Elastomer (TPE) for exceptional comfort
- All flow passages designed for minimum pressure drop - maximum flow
- Fluorocarbon seals for maximum high temperature performance
- Large comfortable hand grip to accommodate work gloves
- Additional venting for excellent high temperature performance
- Durable glass-filled housing
- Trigger made from Zytel (high tech nylon)

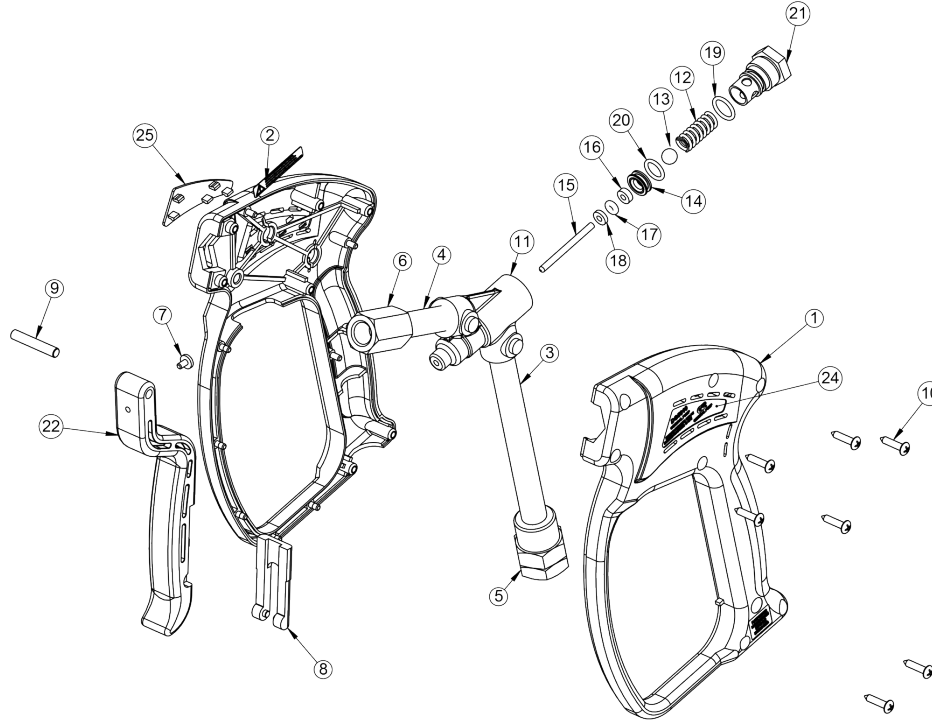
Ref 310108 Rev A  
03-18General Pump  
is a member of  
the Interpump Group**GENERAL PUMP**

# DG5010

## Rear Inlet Spray Gun

**GENERAL PUMP** *A member of the Interpump Group*

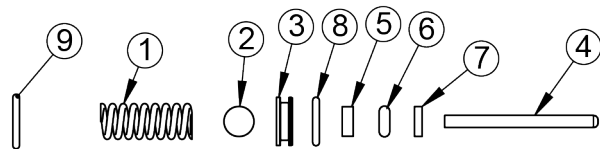
### PARTS LIST



Item	Part No.	Description	Qty.	Item	Part No.	Description	Qty.
1	2660357	Housing, Gun	1	14	2520085	Seat, Gun	1
2	2660356	Housing, Gun	1	15	2520084	Pin, Forging	1
3	2550048	Tube, Inlet	1	16	2510004	Washer, Brass	1
4	2550049	Tube, Outlet	1	17	2701048	O-ring	1
5	2510003	Fitting, Inlet, Gun	1	18	2710018	Washer, Teflon	1
6	2510081	Fitting, Outlet	1	19	2701049	O-ring	1
7	2520010	Striker	1	20	2701045	O-ring	1
8	2660026	Trigger, Lock	1	21	2510156	Plug, Gun	1
9	2510155	Pin, Trigger	1	22	2660360	Trigger	1
10	2200065	Screw	7	23	2400166	Label, Prop 65	1
11	2452011	Forging, Gun	7	24	2660358	Insert, Gun, Left	1
12	2720001	Spring	1	25	2660359	Insert, Gun, Right	1
13	2520004	Ball	1				

### Repair Kit 2100249

Item	Part No.	Description	Qty.
1	2720001	Spring	1
2	2520004	Ball	1
3	2520085	Seat, Ball	1
4	2520084	Pin, Forging	1
5	2510004	Washer, Brass	1
6	2701048	O-ring	1
7	2710018	Washer, Teflon	1
8	2701045	O-ring	1
9	2701049	O-ring	1



Ref 310108 Rev A  
03-18

**GENERAL PUMP • 1174 Northland Drive • Mendota Heights, MN 55120**  
Phone: 651.686.2199 • Fax: 800.535.1745 • email: sales@gpcompanies.com • www.generalpump.com

