



FEATURES

- Shockproof plastic housing
- Ergonomic design
- Internal construction of brass and Stainless Steel
- Minimizes fatigue for the operator

SPECIFICATIONS

| | |
|----------------------------|--|
| Part Number | YG4032S |
| Maximum Volume | 32 GPM |
| Rated Discharge Pressure | 4,050 PSI |
| Maximum Discharge Pressure | 4,500 PSI |
| Maximum Fluid Temperature | 320°F |
| Inlet Port Thread | 1/2" NPT-F |
| Discharge Port Thread | 1/2" NPT-F |
| Weight | 2.8 lbs |
| Dimensions | 10.08" x 6.68" x 1.2" |
| Materials | Stainless Steel, Brass, Plastic, Viton |

DIMENSIONS



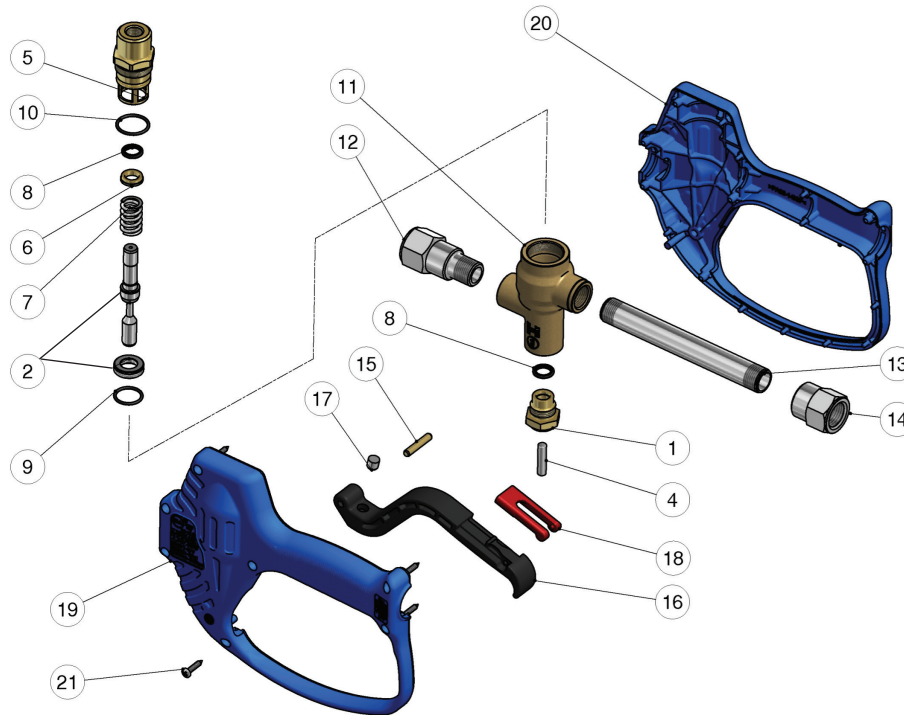
Ref 300944 Rev. G
10-19

YG4032S

Straight, Rear Entry Spray Gun

GENERAL PUMP A member of the Interpump Group

PARTS LIST



| No. | Part No. | Description | Qty. |
|------|-----------|--------------------------------------|------|
| 1. | Y30403831 | Front Plug, M18x1.5, Brass | 1 |
| 2.* | Y30404524 | Piston + Seal Kit | 1 |
| 4. | Y30404151 | Parallel SST Pin, 6x25.8 mm | 1 |
| 5. | Y30403731 | Spring Holder | 1 |
| 6. | Y30404031 | Spacer Ring, 10.1x15.8x3.8 mm, Brass | 1 |
| 7.* | Y30404251 | Spring, 2.4x15.3x30 mm, SST | 1 |
| 8.* | Y10202700 | Stem Seal, 10x15x2.2 mm, + O-ring | 2 |
| 9.* | Y10306801 | O-ring, 1.78x17.7 mm | 1 |
| 10.* | Y10307201 | O-ring, 1.78x20.35 | 1 |

* Y30404624 Repair Kit, YG4032S

| No. | Part No. | Description | Qty. |
|-----|-----------|------------------------------------|------|
| 11. | Y30068135 | Housing | 1 |
| 12. | Y30065251 | Coupling, 1/2" NPT-F, SST | 1 |
| 13. | Y30510456 | Tube, M18x1.5, SST | 1 |
| 14. | Y30065451 | Coupling, 1/2" NPT-F, SST | 1 |
| 15. | Y30251731 | Parallel Pin, 5x27.5 mm, Brass | 1 |
| 16. | Y30530384 | Trigger, Black | 1 |
| 17. | Y30225551 | Stop Pin, 8X7.5, SST | 1 |
| 18. | Y30151084 | Safety Latch, Red | 1 |
| 19. | Y30068624 | Casing Kit + SS Screws | 1 |
| 21. | Y16307551 | Self Tapping Screw, 3.5x18 mm, SST | 7 |

INSTRUCTIONS

This product is to be used with clean, fresh water. For use involving different or corrosive liquids, contact your GP's customer service department. Appropriate filtration should be installed when using unclean liquids. Choose the gun that most closely matches the rated pressure, max flow and max temperature of the pressure wash system. In any case, the pressure of the machine should not exceed the permissible pressure rate imprinted on the gun.

INSTALLATION

This gun was designed to operate with hot water (in compliance with the technical specs), making sure not to exceed the max temperature. Always fit a safety valve to protect the system when the latter is under pressure. Choose a suitable nozzle and adjust the valve mounted in the front of the gun, thus obtaining a constant supply and avoiding unwanted pressure spikes. If the nozzle wears out, the pressure falls. When you install a new nozzle, adjust the system back to the original pressure.

OPERATION

The gun opens and closes a high pressure conduct by means of a piston acting on a seat; the return is controlled by a spring which releases the trigger. Attention: during pump activation ALWAYS set the gun with its safety latch connected in order to prevent accidental openings.