

ACCESSORIES

DMC12V: 12 Volt DC Variable Speed Controller Rewind Kit



- 30 amp auto-reset circuit breaker
- Heavy duty momentary on/off switch
- Variable speed knob with built in on/off function
- LED power indicator light
- Reversible powder-coated mounting plate for left or right orientation
- Sealed Housing

Part Number	DMC12V
Voltage	12 VDC
Max Amps	30 A
Working Temperature	-4°F - 104°F

SAFETY PRECAUTIONS

1. Make sure incoming pressure does not exceed the rated pressure.
2. Use proper eye protection when assembling and using the hose reel.
3. Assemble the hose reel on a clean workbench free of debris and moisture.
4. Use soap and water when checking for air leaks.
5. Keep children away from work area.

Ref 310109 Rev. F
07-21

WARNING!

Exposure of skin directly to pressurized air or fluids could result in severe bodily injury!

General Pump

1174 Northland Drive • Mendota Heights, MN 55120
Phone: 651.686.2199 • Fax: 800.535.1745

www.generalpump.com • email: sales@gpcompanies.com

INDUSTRIAL Hose Reel Electric Motor Kit

From General Pump



DHRA50300 & 2103410
SHOWN

2103410

- POWERFUL 12V DC MOTOR
- LONG LASTING HARDENED GEARS
- HOSE REEL SOLD SEPARATELY
- Weight: 21 lbs.

OPERATOR'S MANUAL

Ref 310109 Rev. F
07-21



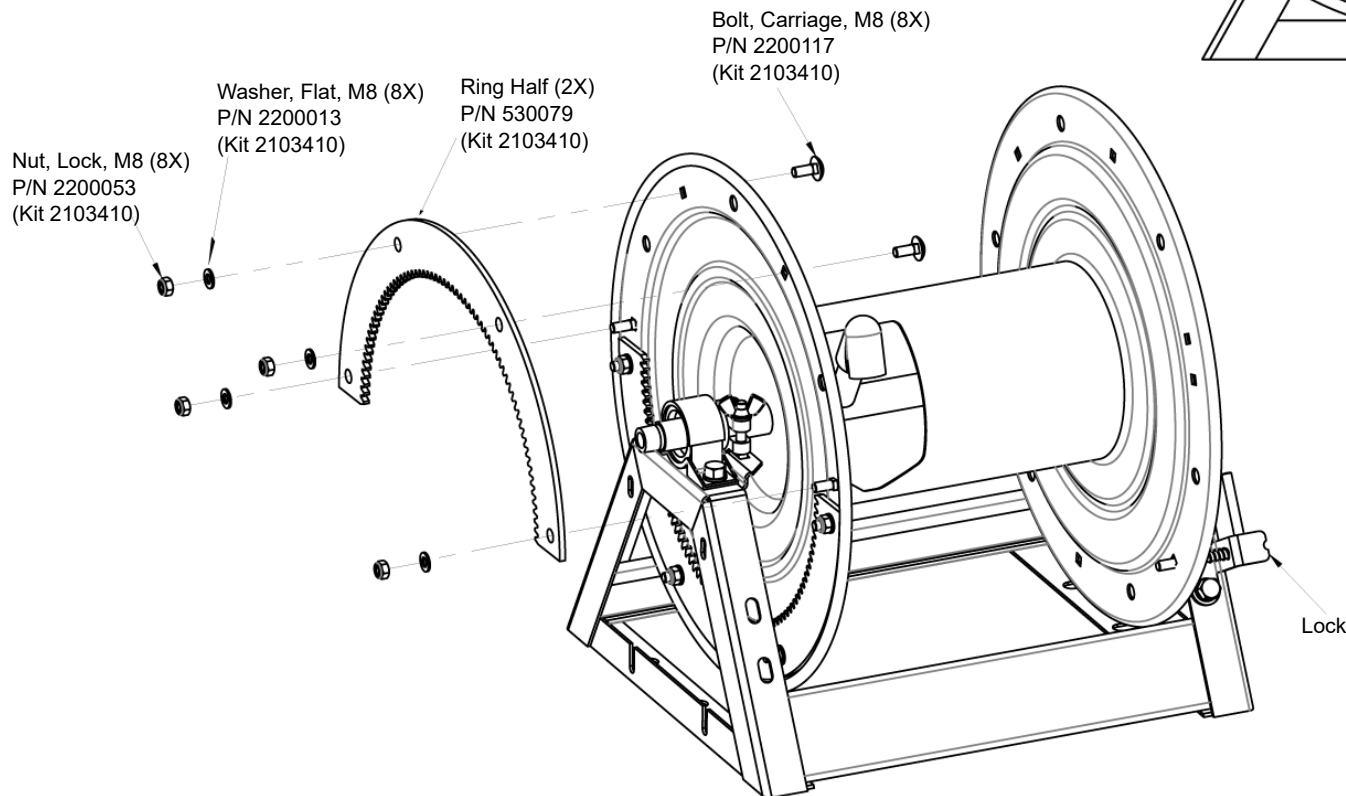
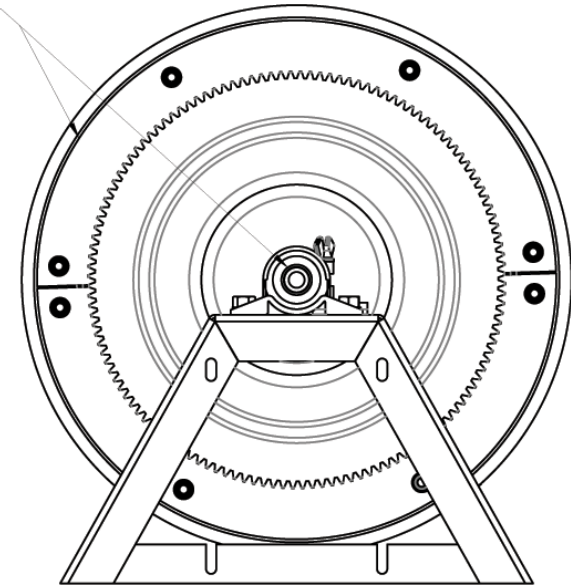
General Pump
is a member of
The Interpump Group



POWERED HOSE REEL ASSEMBLY INSTRUCTIONS

1. On the end of the hose reel opposite the lock, assemble the two ring gear halves to the hose reel using carriage bolts, washers and lock nuts. Two alignment pins are supplied to make it easier. Torque to 100 in-lbs.
2. Assemble plate motor with bolts, lock washer and flat washers as shown. Torque to 100 in-lb.
3. Slide spur gear onto motor shaft; gear face will hang over with end of motor shaft by about 5 mm (3/16"). Apply a drop of medium strength thread locker to the set screw and thread into gear. Torque set screw to 20 in-lb
4. Attach motor assembly to hose reel frame using carriage bolts, flat washers (bottom two bolts only), flat washers, and locknuts. Finger tight only for now.
5. Rotate the hose reel by hand a few revolutions to get the motor assembly and ring gears to align. Torque the motor assembly nuts to 100 in-lb.

Rings Concentric
with Center Shaft



Screw Set, M4
P/N 2200115
(Kit 2103410)

Gear, Spur, 12T
P/N 2530129
(Kit 2103410)

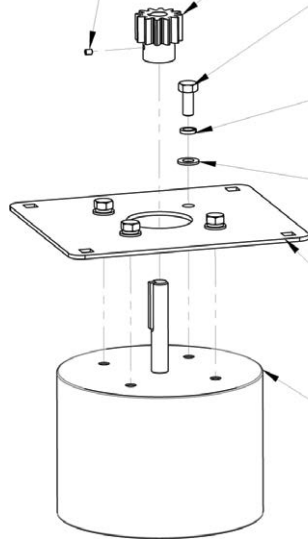
Bolt, HHCS, 5/16-18 (4X)
P/N 2200116
(Kit 2103410)

Washer, Lock, M8 (4X)
P/N 2203507
(Kit 2103410)

Washer, Flat, M8 (4X)
P/N 2200013
(Kit 2103410)

Plate, Motor
P/N 2540113
(Kit 2103410)

Motor, 12V
P/N 2639000
(Kit 2103410)



Cap, 1/2 NPT-F
P/N 2530130
(Kit 2103410)

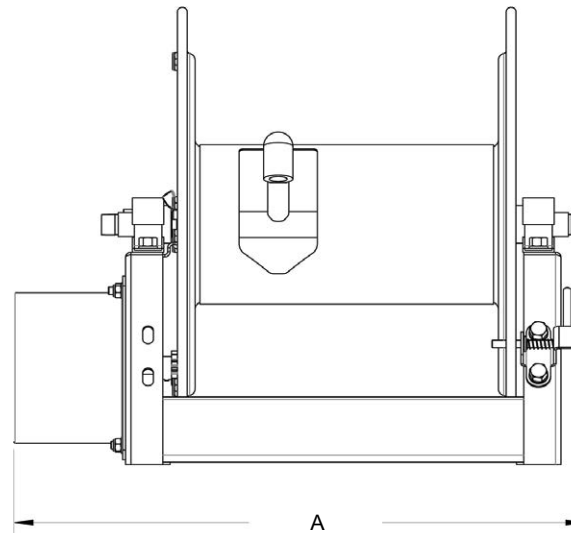
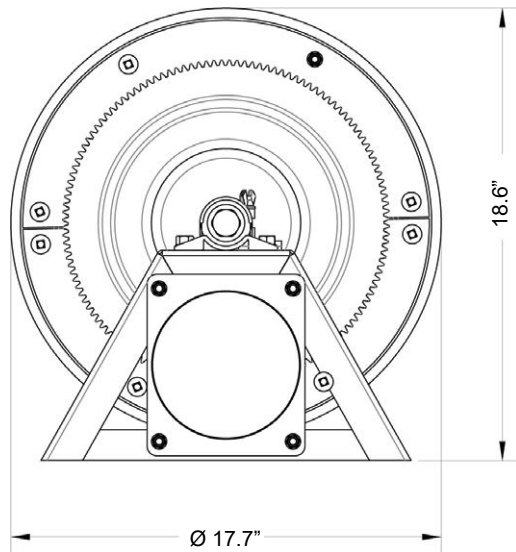
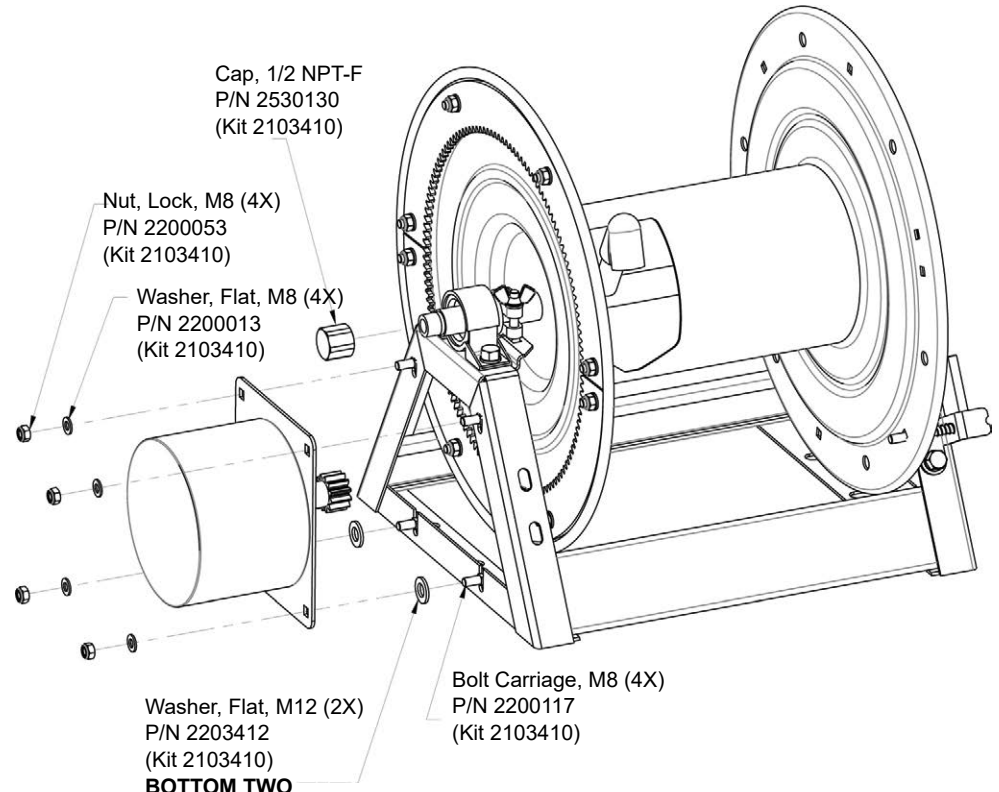
Nut, Lock, M8 (4X)
P/N 2200053
(Kit 2103410)

Washer, Flat, M8 (4X)
P/N 2200013
(Kit 2103410)

Washer, Flat, M12 (2X)
P/N 2203412
(Kit 2103410)

**BOTTOM TWO
BOLTS ONLY**

Bolt Carriage, M8 (4X)
P/N 2200117
(Kit 2103410)



Hose Reel	"A" Dimensions
DHRA50150	18"
DHRA50300	23"
DHRA50450	29"