

Inverter Driven Heat Pump

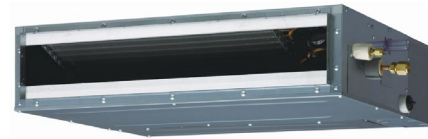
9,000 BTU Single Zone Slim Ducted System

Job Name _____
 Location _____
 Engineer _____
 Submitted To _____
 Submitted By _____
 Reference _____

Date _____
 Approval _____
 Construction _____
 Unit No _____
 Drawing No _____

PRODUCT FEATURES

Auto Changeover
 24 hr./Weekly Timer
 Built in condensate Pump
 Auto Restart
 Economy Mode
 Auto Fan Mode
 Daisy Chain Compatible



MODEL NUMBERS

Indoor Unit	ARU9RLF
Outdoor Unit	AOU9RLFC
System	9RLFC

EFFICIENCIES

SEER	21.5
EER	14.5
HSPF	12.2
COP	kW/kW 3.95
	Btu/hW 13.5

OUTDOOR TEMPERATURE OPERATION RANGE

Cooling	*F(*C)	14 to 115 (-10 to 46)
Heating		-5 to 75 (-21 to 24)

CAPACITIES

Cooling	Rated	BTU/hW	9,000
	Min.-Max.		3,100-12,000
Heating	Rated		12,000
	Min.-Max.		3,100-18,000

LINESET REQUIREMENTS

Connection Method		Flare
Liquid	in (mm)	Ø1/4(Ø6.35)
Gas		Ø3/8(Ø9.52)
Pre-Charge Length	ft (m)	49 (15)
Minimum Length		10 (3)
Maximum Length		66 (20)
Max. Height Diff.		49 (15)

INDOOR DIMENSIONS & WEIGHT

Net (H x W x D)	in	10-9/16 x 33-1/16 x 8
	mm	268 x 840 x 203
Gross (H x W x D)	in	10-5/8 x 34-13/16 x 13-1/4
	mm	270 x 884 x 336
Net Weight	lb (kg)	19(8.5)
Gross Weight		24(10.5)

OUTDOOR DIMENSIONS & WEIGHT

Net (H x W x D)	in	24 - 1/2 x 31 - 3/32 x 11 - 11/32
	mm	620 x 790 x 290
Gross (H x W x D)	in	28 - 1/16 x 37-7/32 x 15 - 9/16
	mm	713 x 945 x 395
Net Weight	lb (kg)	84 (38)
Gross Weight		93 (42)

Warranty Information



7 Year Compressor, 5 Year Parts out-of-the-box Warranty



10 Year Compressor, 10 Year Parts Warranty when registered within 60 days of installation in a residence



12 Year Compressor, 12 Year Parts Warranty when registered within 60 days of installation in a residence, and installed by a Fujitsu Elite contractor

ACCESSORIES

UTY-TTRX	3rd Party Thermostat Converter
UTD-ECS5A	Slim Duct Connector Kit
UTY-LRHUM	Wireless Remote Receiver Kit
UTY-RVNUM	Wired Remote w/backlight
UTY-RSNUM	Simple Remote
UTY-XSZX	Remote Sensor
FJ-RC-WIFI-1NA	Intesis Wired WiFi Module
FJ-IR-WIFI-1NA	Intesis IR WiFi Module
UTY-TFNXZ2	WiFi Interface Module
UTD-GXSA-W	Auto Louver Grill Kit



This system combination is Energy Star qualified



Indoor Unit ETL#: 3170288
 Outdoor Unit ETL#: 91987



SUBMITTAL 9RLCD



Inverter Driven Heat Pump

9,000 BTU Single Zone Slim Ducted System

FAN DATA					ELECTRICAL SPECIFICATIONS					
Indoor Unit Airflow Rate	Cooling	High	CFM (m3/h)	353 (600)	Voltage/Frequency/Phase				208/230V~60HZ	
		Medium		324 (550)	Voltage Range				187-253V~60HZ	
		Low		294 (500)	Current	Cooling	Rated	A	3.0	
		Quiet		265 (450)		Heating	Rated		3.9	
	Heating	High		353 (600)	Maximum Operating Current		Cooling		9.3	
		Medium		324 (550)			Heating		10.8	
		Low		294 (500)	Starting Current		4.1			
		Quiet		265 (450)			MCA			
Outdoor Unit Airflow Rate	Cooling		794 (1350)	Maximum Circuit Breaker					15	
	Heating		989 (1680)							
SOUND PRESSURE										
Indoor Unit	Cooling	High	dB (A)	28	Input Power	Cooling	Rated	kW	0.62	
		Medium		27		Heating	Max		1.4	
		Low		26			Rated		0.85	
		Quiet		25		Max	1.80			
	Heating	High		28	Power Factor	Cooling	%	90		
		Medium		26		Heating	94			
		Low		25						
		Quiet		24						
Outdoor Unit	Cooling		44							
	Heating		49							
REFRIGERANT										
Type				R410A	Operation Range	Cooling	°F (°C)	64 to 90 (18 to 32)		
Charge	lb oz	2lbs.10oz.					%RH	80 or less		
	kg	1					°F (°C)	60 to 88 (16 to 30)		
Oil Type				FREOL α68SZ		Static Pressure in W.C.		0 ~ 0.36		

Auto Louver Grill Data (SOLD SEPARATELY):



Model name			UTD-GXSA-W	UTD-GXSB-W
Power Supply			Connecting with Control box of indoor unit	
Attachment of Auto Louver			Louver attached by screws to the flange or rectangular duct	
Extension Square Duct Limit		in. (mm)	39-3/8 (1.0) (Max. duct length between indoor unit and Grille)	
Net Dimension (H x W x D)		in. (mm)	7-1/16x26-7/8x(3-5/16+3/8) [180x683x(84+9)]	7-1/16x34-3/4x(3-5/16+3/8) [180x883x(84+9)]
Weight	Net	lbs. (kg)	4.4 (2.0)	5.6 (2.5)
	Gross		6.7 (3.0)	7.8 (3.5)
Color			White	
Louver Motor			Stepping Motor	
Material			Flame retardant ABS	
Accessories			Attachment Frame	
Operation range	Cooling	°F (°C)	64 to 90 (18 to 32)	
	% RH		80% or less	
	Heating	°F (°C)	60 to 88 (16 to 30)	

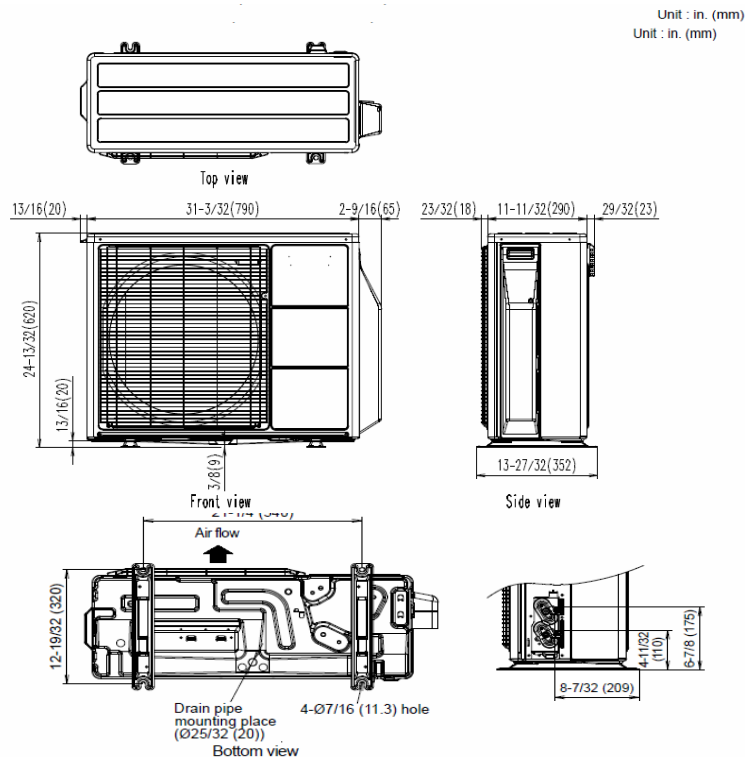
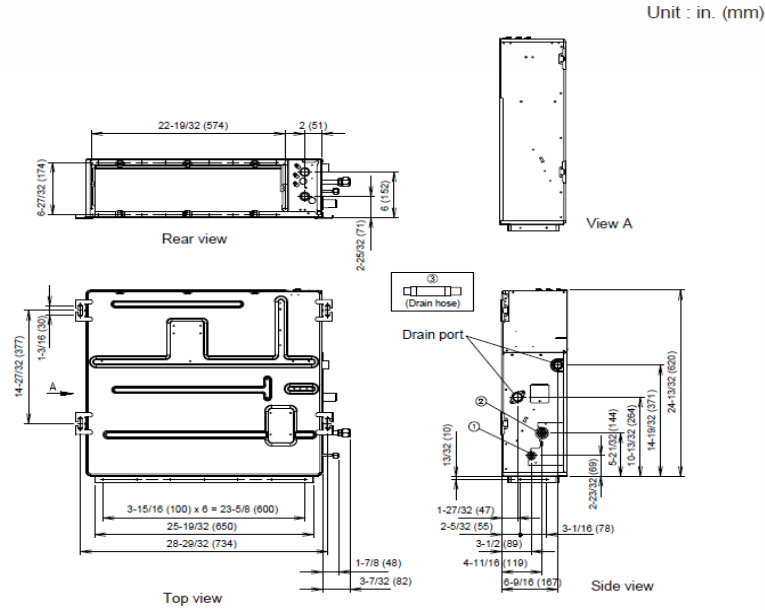
The Fujitsu logo is a worldwide trademark of Fujitsu General Limited. The Halcyon logo and name is a worldwide trademark of Fujitsu General Limited and is a registered trademark in Japan, the USA and other countries or areas. Copyright 2018 Fujitsu General America, Inc. Fujitsu's products are subject to continuous improvements. Fujitsu reserves the right to modify product design, specifications and information in this brochure without notice and without incurring any obligations.

Note: Specifications are based on the following conditions:
Cooling: Indoor temperature of 80°F (26.7°C) DB/67°F (19.4°C) WB, and outdoor temperature of 95°F (35°C) DB/75°F (23.9°C) WB. Heating: Indoor temperature of 70°F (21.1°C) DB/60°F (15.6°C) WB, and outdoor temperature of 47°F (8.3°C) DB/43°F (6.1°C) WB. Pipe length: 25ft. (7.5m), Height difference: 0ft. (0m) (Outdoor unit - indoor unit).

Inverter Driven Heat Pump

9,000 BTU Single Zone Slim Ducted System

DIMENSIONS



The Fujitsu logo is a worldwide trademark of Fujitsu General Limited. The Halcyon logo and name is a worldwide trademark of Fujitsu General Limited and is a registered trademark in Japan, the USA and other countries or areas. Copyright 2018 Fujitsu General America, Inc. Fujitsu's products are subject to continuous improvements. Fujitsu reserves the right to modify product design, specifications and information in this brochure without notice and without incurring any obligations.

Note: Specifications are based on the following conditions:
 Cooling: Indoor temperature of 80°F (26.7°C) DB/67°F (19.4°C) WB, and outdoor temperature of 95°F (35°C) DB/75°F (23.9°C) WB. Heating: Indoor temperature of 70°F (21.1°C) DB/60°F (15.6°C) WB, and outdoor temperature of 47°F (8.3°C) DB/43°F (6.1°C) WB. Pipe length: 25ft. (7.5m), Height difference: 0ft. (0m) (Outdoor unit - indoor unit).