

Inverter Driven Heat Pump

12,000 BTU Compact Cassette Type

Job Name _____
 Location _____
 Engineer _____
 Submitted To _____
 Submitted By _____
 Reference _____

Date _____
 Approval _____
 Construction _____
 Unit No _____
 Drawing No _____

PRODUCT FEATURES

- Wired remote controller
- Fresh Air Kit Compatible
- Auto|Cool|Dry|Fan|Heat modes
- Weekly|24 Hr. timer
- Powerful mode
- Cold prevention
- Auto Restart



MODEL NUMBERS

Indoor Unit	AUU12RLF
Nominal Capacity	12,000

LINESET REQUIREMENTS

Connection Method	Flare
Liquid	Ø1/4 (Ø6.35)
Gas	Ø3/8 (Ø9.52)
Drain hose	Material Hard PVC
	in Ø 3/4 (I.D.), Ø 1-1/16 (O.D.)
	mm Ø 20.7 (I.D.), Ø 26.6 (O.D.)

INDOOR DIMENSIONS & WEIGHT

Net (H x W x D)	in 9-5/8 x 22-7/16 x 22-7/16
	mm 245 x 570 x 570
Gross (H x W x D)	in 10-7/16 x 28-3/4 x 24-5/8
	mm 265 x 730 x 625
Net Weight	lb (kg) 33 (15)
Gross Weight	40 (18)

ELECTRICAL SPECIFICATIONS

Voltage/Frequency/Phase	208/230 V ~ 60 Hz
Voltage Range	187-264 V
Running Current	A 0.19
Input Power	W 23

SOUND PRESSURE

Indoor Unit	Cooling	High	dB (A)	37
		Medium		33
		Low		31
		Quiet		28
	Heating	High		37
		Medium		33
		Low		31
		Quiet		28

FAN DATA

Airflow Rate	Cooling	High	CFM (m3/h)	359 (610)
		Medium		312 (530)
		Low		277 (470)
		Quiet		241 (410)
	Heating	High		359 (610)
		Medium		312 (530)
		Low		277 (470)
		Quiet		241 (410)

Warranty Information



7 Year Compressor, 5 Year Parts out-of-the-box Warranty



10 Year Compressor, 10 Year Parts Warranty when registered within 30 days of installation in a residence



12 Year Compressor, 12 Year Parts Warranty when registered within 30 days of installation in a residence, and installed by a Fujitsu Elite contractor

ACCESSORIES

UTY-TTRX	3rd Party Thermostat Converter
UTY-RNNUM	Wired Remote
UTY-RVNUM	Wired Remote w/backlight
UTY-RSNUM	Simple Remote
UTY-XWZX	Dry Contact Wire Kit
FJ-IR-WIFI-1NA	Intesis IR WiFi module
FJ-RC-WIFI-1NA	Intesis Wired WiFi module
UTY-TFNXZ2	WiFi interface Module



ETL#: 3170288

Due to continuous product improvements, specifications are subject to change without notice. Please log in to the Fujitsu Portal for the most up-to-date documentation
<https://portal.fujitsugeneral.com>

Effective Date: 9/18/2019 Version AUU12RLF -2019B

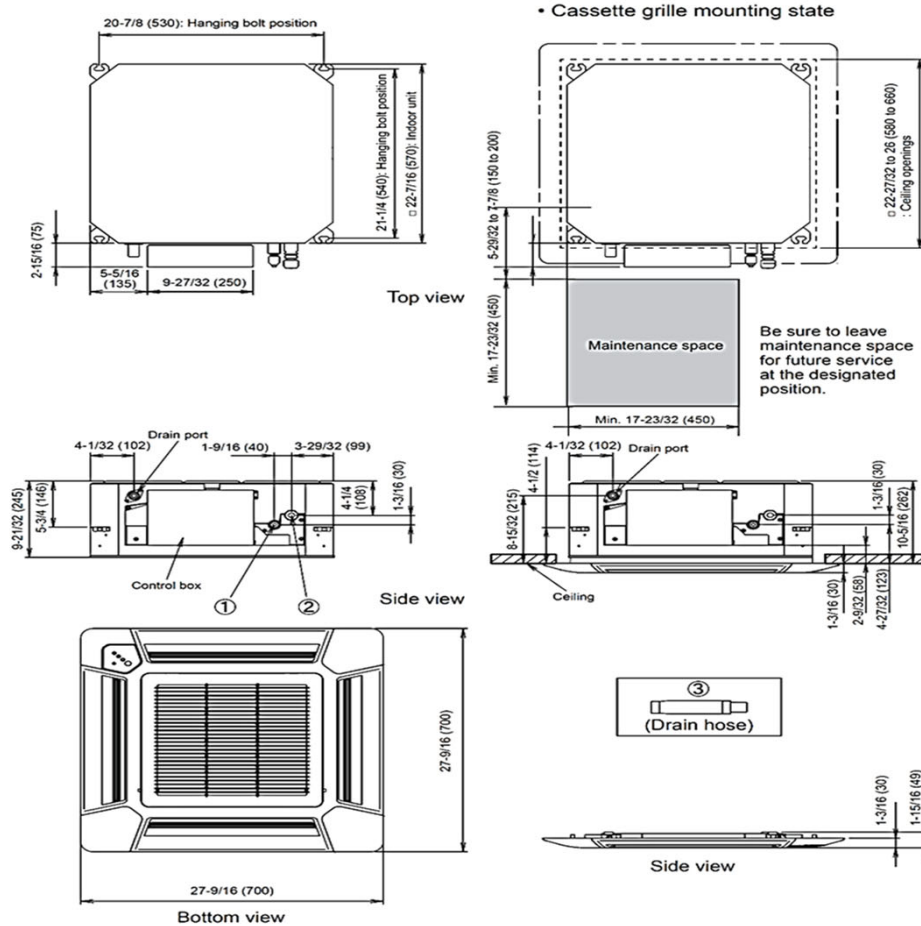
Fujitsu General America, Inc. • 353 Route 46 West Fairfield, NJ 07004 • Toll Free: (888) 888-3424 • www.fujitsugeneral.com

Inverter Driven Heat Pump

12,000 BTU Compact Cassette Type

DIMENSIONS

Units: In. (mm)



The Fujitsu logo is a worldwide trademark of Fujitsu General Limited. The Halcyon logo and name is a worldwide trademark of Fujitsu General Limited and is a registered trademark in Japan, the USA and other countries or areas. Copyright 2018 Fujitsu General America, Inc. Fujitsu's products are subject to continuous improvements. Fujitsu reserves the right to modify product design, specifications and information in this brochure without notice and without incurring any obligations.

Note: Specifications are based on the following conditions:
Cooling: Indoor temperature of 80°F (26.7°C) DB/67°F (19.4°C) WB, and outdoor temperature of 95°F (35°C) DB/75°F (23.9°C) WB. Heating: Indoor temperature of 70°F (21.1°C) DB/60°F (15.6°C) WB, and outdoor temperature of 47°F (8.3°C) DB/43°F (6.1°C) WB. Pipe length: 25ft. (7.5m), Height difference: 0ft. (0m) (Outdoor unit - indoor unit).