
Kaishan Rotary Screw Air Compressor

KRSV 125HP Parts Manual

PN:97002023000112

Release June 2023, Version: I

(460V/60HZ/VSD/ASME/UL)

TABLE OF CONTENTS

Service Parts	3
Serial Number	3
Fluid Specification	4
Spare Parts	5
Airend and inlet valve.....	6
Base mounting	9
Reservoir	11
Driving System and Electrical Motor	14
Air Cooler	16
Fluid Piping.....	18
Cabinet.....	20
Electrical Enclosure	22
Decals	24
Standard Terms and Conditions.....	27
Appendix	30
Contact Information	31

Service Parts

The following information must be provided for ordering service parts:

1. The serial number of unit must be provided. It will be verified to ensure correct replacement parts are ordered.
2. Service parts must be ordered from closest authorized distributor.
3. Exact part number, quantity and delivery method must be provided.

All service parts must be ordered through nearest authorized distributor. Insist on genuine manufacturer parts only. Failure to do so may void product warranty.

Serial Number

The unit serial number can be found on serial number tag, which is located on the cabinet corner post of the unit. The serial number tag is shown as follows.

KAISHAN SCREW VACUUM PUMP

MODEL

SERIAL NUMBER

MAX VACUUM LEVEL HG MOTOR POWER HP

VOLTAGE DATE OF MFG

NET WEIGHT KG

KAISHAN COMPRESSOR USA, Loxley, AL
www.KaishanUSA.com

Fluid Specification

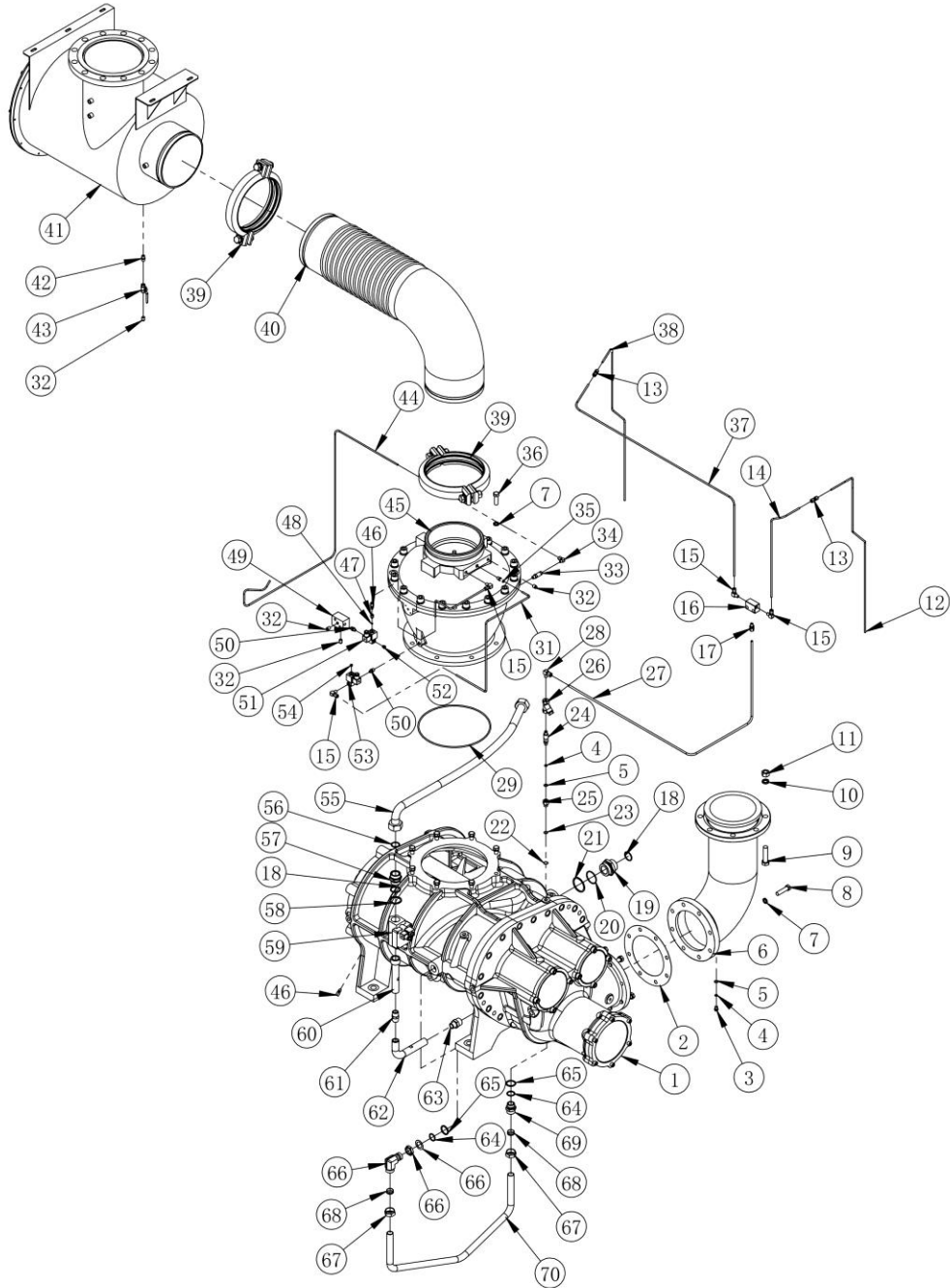
All KRSV Compressors must use KCA recommended fluid for maintenance.

Spare Parts

Recommended spare parts are shown as follows:

ITEM No.	QTY	PART NUMBER	DESCRIPTION		
1	1	07703 03257 10	Air filter element		
2	1	537705 331800	Oil filter		
3	1	07704 12700 00	Fluid/air separator element		

Airend and Inlet valve



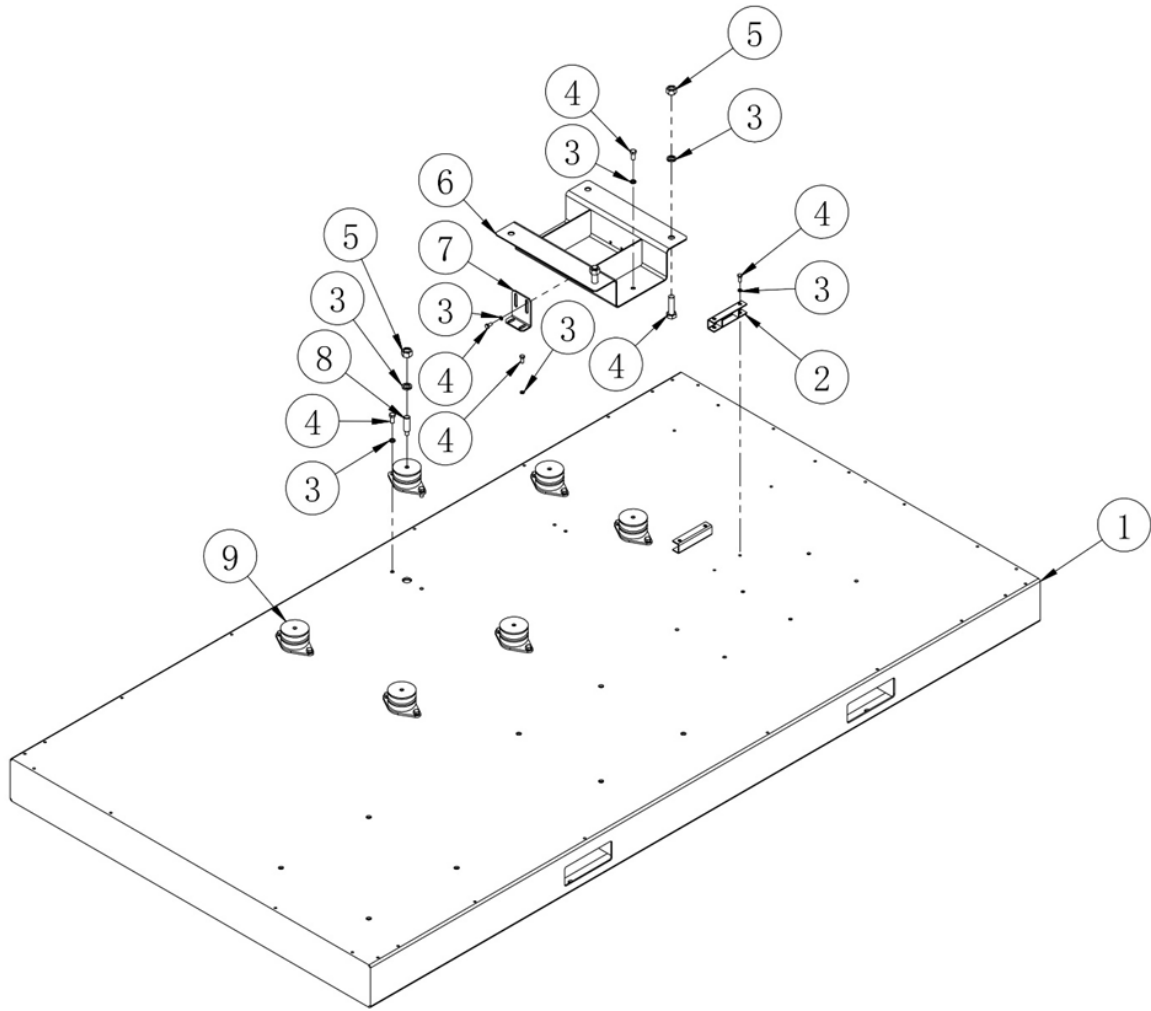
Airend and Inlet valve

NO.	Version	PN	DESCRIPTION	QTY	REMARK
1		1840201	Airend	1	
2		02216 20260 86	Gasket	1	
3		18404 03100 00	Plug	1	M12X1.5
4		02901 00950 10	O ring	2	9.5X1.8
5		02201 01215 00	Screw washer	2	
6		93031 01002 00	Airend discharge pipe	1	
7		01365 16000 00	Washer	16	16
8		01306 16065 00	Bolt	8	M16×65
9		01306 20080 00	Bolt	8	M20×80
10		01365 20000 00	Washer	8	20
11		01322 20000 00	Nut	8	M20
12		93031 01009 00	Scavenging pipe	1	
13		01558 06000 00	Joint	2	
14		93031 01008 00	Scavenging pipe	1	
15		01513 06130 00	Joint	4	
16		16315 07005 01	Connecting seat	1	
17		01512 08130 00	Joint	1	
18		02901 03870 30	O ring	2	38.7X3.55
19		98055 06001 09	Joint	1	
20		02901 05600 30	O ring	1	56X3.55
21		02201 00050 00	Screw washer	1	
22		02201 01615 02	Screw washer	1	
23		02901 01400 10	O ring	1	14X1.8
24		01610 01030 02	Visible check valve	1	
25		26415 06091 00	Joint	1	M16*1.5-M12*1.5
26		07706 00025 00	Filter	1	
27		93031 01007 00	Scavenging pipe	1	
28		01513 08130 00	Joint	1	
29		02901 32000 50	O ring	1	320*5.3
30		90031 01006 00	Air control pipe	1	
31		90031 01005 00	Air control pipe	1	
32		02103 00008 00	Plug	4	
33		01610 03000 00	Check valve	1	
34		01513 06100 00	Joint	1	
35		01512 06130 00	Joint	1	
36		01307 16050 00	Bolt	8	M16×50
37		93031 01100 00	Scavenging pipe	1	
38		93031 01120 00	Scavenging pipe	1	
39		01530 10126 74	Joint	2	
40		93031 01006 00	Air filter connecting pipe	1	
41		93031 08010 00	Air filter	1	
42		98018 07011 00	Joint	1	

Airend and inlet valve

NO.	Version	PN	DESCRIPTION	QTY	REMARK
43		01613 00800 00	Ball valve	1	
44		93031 01110 00	Oil return pipe	1	
45		01691 00001 00	Inlet valve	1	
45A*		04002 00225 02	Inlet valve kit	1	Oring 30X2.65 (3), guide belt A (2), Oring 230X5.3, Oring 272X5.3,guide belt B (2), spring A, guide belt B (2), Oring 500X7, spring B
46		01512 06100 00	Joint	2	
47		91031 01250 01	Joint	1	M5-Rp0.125
48		02901 00400 10	O ring	1	4X1.8
49		18031 07002 00	Connecting block	1	
50		98018 07011 03	Joint	2	
51		01603 31016 00	Solenoid valve	1	5bar,1.5
52		07711 08006 00	Muffler	1	
53		01603 31015 00	Solenoid valve	1	12bar,1.5
54		07711 04005 00	Muffler	1	
55		93031 01003 00	Air pipe	1	
56		02901 03250 30	O ring	1	32.5X3.55
57		16315 07012 09	Joint	1	
58		02201 00032 00	Screw washer	1	
59		01603 00032 00	Solenoid valve	1	
60		93031 01150 00	Connecting pipe	1	
61		53404 07001 00	Joint	1	
62		93031 01140 00	Connecting pipe	1	
63		91031 01100 01	Joint	1	
64		02901 03000 30	O ring	2	30X3.55
65		02201 00025 00	Screw washer	2	
66		90031 01002 00	Adjustable elbow	1	
67		01504 02800 00	Nut	2	G28
68		01514 02800 00	Cutting sleeve	2	28
69		90031 01001 00	Joint	1	
70	S01	93031 01005 00	Oil injection pipe	1	

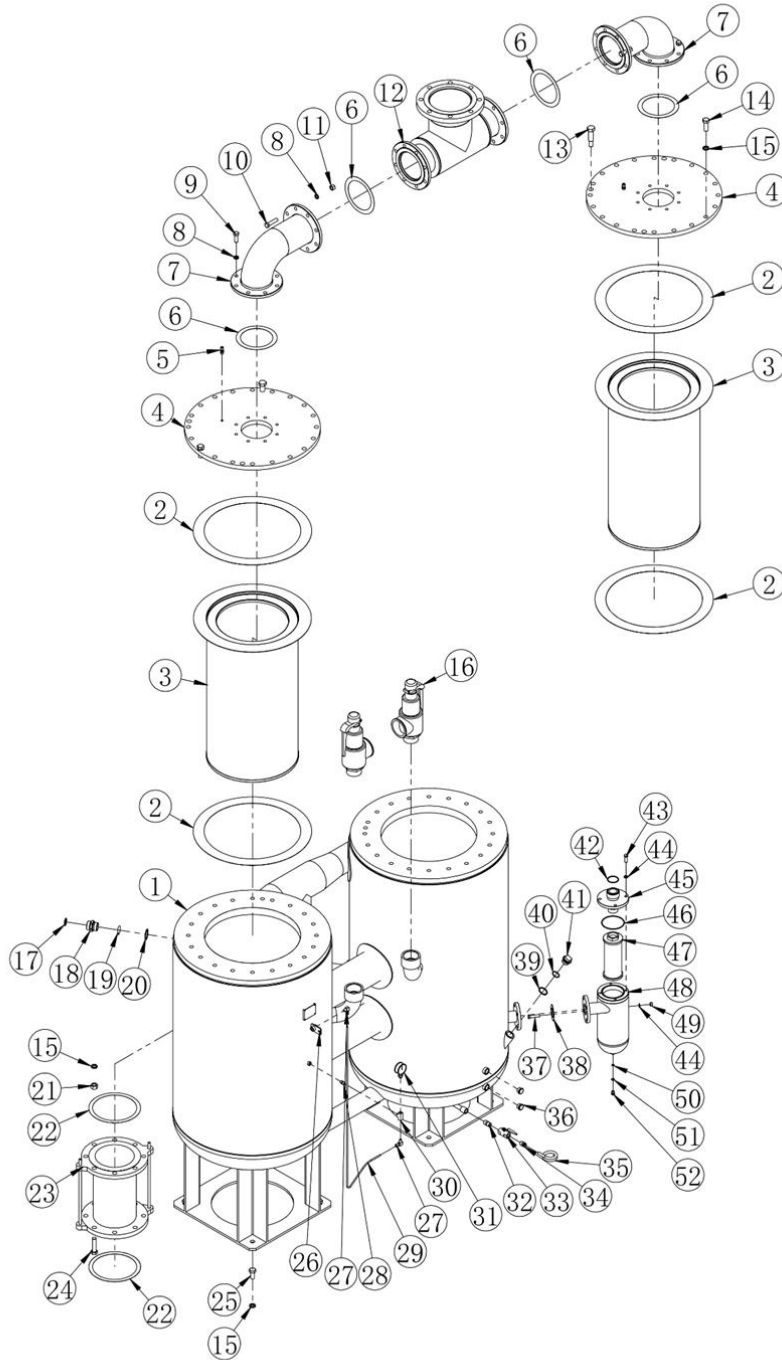
Base mounting



Base mounting

NO.	Version	PN	DESCRIPTION	QTY	REMARK
1		93031 02010 00	Base	1	
2		90031 02003 00	Motor support	2	
3		01365 10000 00	Washer	30	10
4		01307 10025 00	Bolt	26	M10×25
5		01322 24000 00	Nut	8	M24
6		93031 02002 00	Motor support	1	
7		20438 02001 00	Fixing plate,shipping	1	
8		20478 02001 00	Stud	4	M14-M24
9		02905 00002 00	Absorber	6	

Reservoir



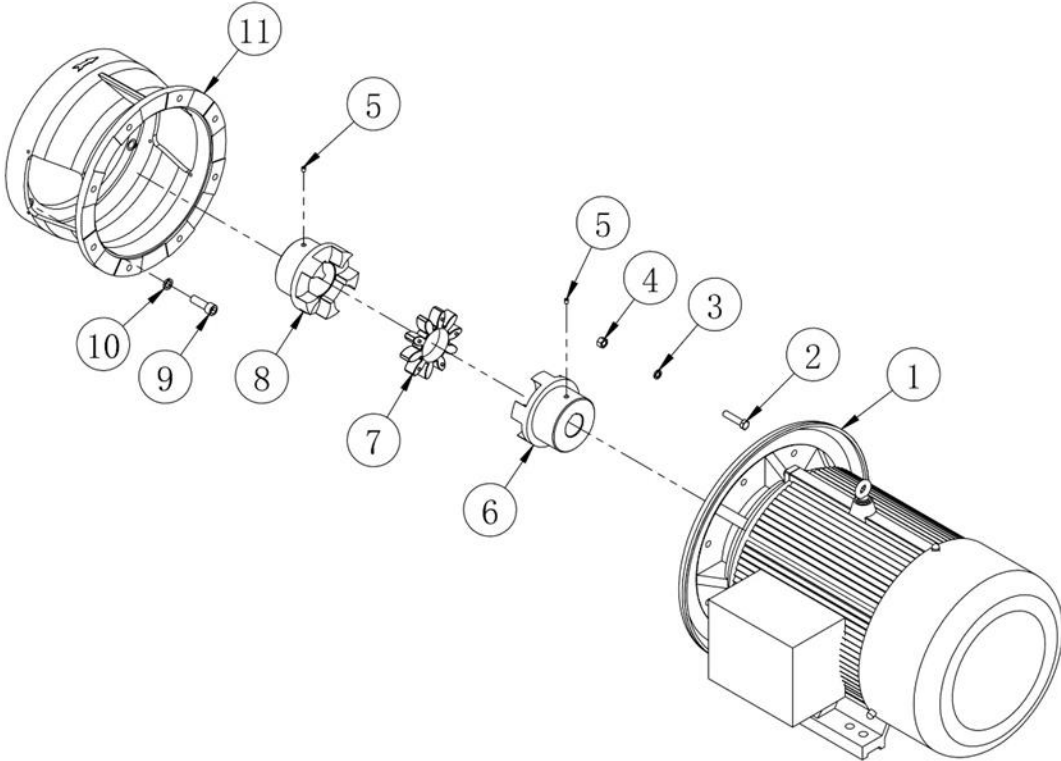
Reservoir

NO.	PN	DESCRIPTION	QTY	REMARK
1	93031 03010 00	Air/fluid separator tank	1	
2	02216 31252 01	Gasket	4	
3	07704 12700 00	Air/fluid separator element	2	
4	93031 03004 00	Lid	2	
5	92217 03300 00	Joint	2	
6	02216 15016 06	Gasket	4	
7	93031 03006 00	Discharge connecting pipe	2	
8	01365 16000 00	Washer	32	16
9	01307 16045 00	Bolt	16	M16×45
10	01306 16065 00	Bolt	16	M16×65
11	01322 16000 00	Nut	16	M16
12	93031 03003 00	Air discharge pipe	1	
13	821141 103030	Bolt	2	
14	01307 20055 00	Bolt	40	M20×55
15	01365 20000 00	Washer	56	20
16	01601 65010 00	Safety valve	2	
17	02901 03250 30	O ring	1	32.5X3.55
18	16315 07012 09	Joint	1	
19	02901 03870 30	O ring	1	38.7X3.55
20	02201 00032 00	Screw washer	1	
21	01322 20000 00	Nut	8	M20
22	02216 20016 06	Gasket	2	
23	22012 03003 00	Corrugated pipe	1	
24	01306 20080 00	Bolt	8	M20×80
25	01307 20040 00	Bolt	8	M20×40
26	90217 03100 00	Pressure sensor gauge	1	
27	01513 06130 00	Joint	2	
28	98018 07011 00	Joint	1	
29	93031 03007 00	Pressure sensor connecting pipe	1	
30	11476 07003 00	Tee joint	1	1/4
31	02801 06301 00	pressure gauge	1	
32	13340 03004 00	Joint	1	
33	01613 01500 00	Ball valve	1	DN15
34	01543 21012 00	Joint	1	
35	02917 12300 00	Nylon pipe	1	
36	02102 00020 00	Sight glass	2	
37	01306 12050 00	Bolt	4	M12×50
38	02216 04016 06	Gasket	1	
39	02201 03320 00	Screw washer	1	
40	02901 03350 30	O ring	1	33.5X3.55
41	13340 03003 00	Plug	1	

Reservoir

NO.	Version	PN	DESCRIPTION	QTY	REMARK
42		02901 05150 30	O ring	1	51.5X3.55
43		01307 12035 00	Bolt	4	M12×35
44		01365 12000 00	Washer	8	12
45		93031 03005 00	Oil strainer flange	1	
46		02901 11000 30	O ring	1	110X3.55
47		07706 16901 70	Oil strainer element	1	
48		23177 03003 00	Oil strainer seat	1	
49		01322 12000 00	Nut	4	M12
50		02901 00950 10	O ring	1	9.5X1.8
51		02201 01215 00	Screw washer	1	
52		18404 03100 00	Plug	1	M12X1.5

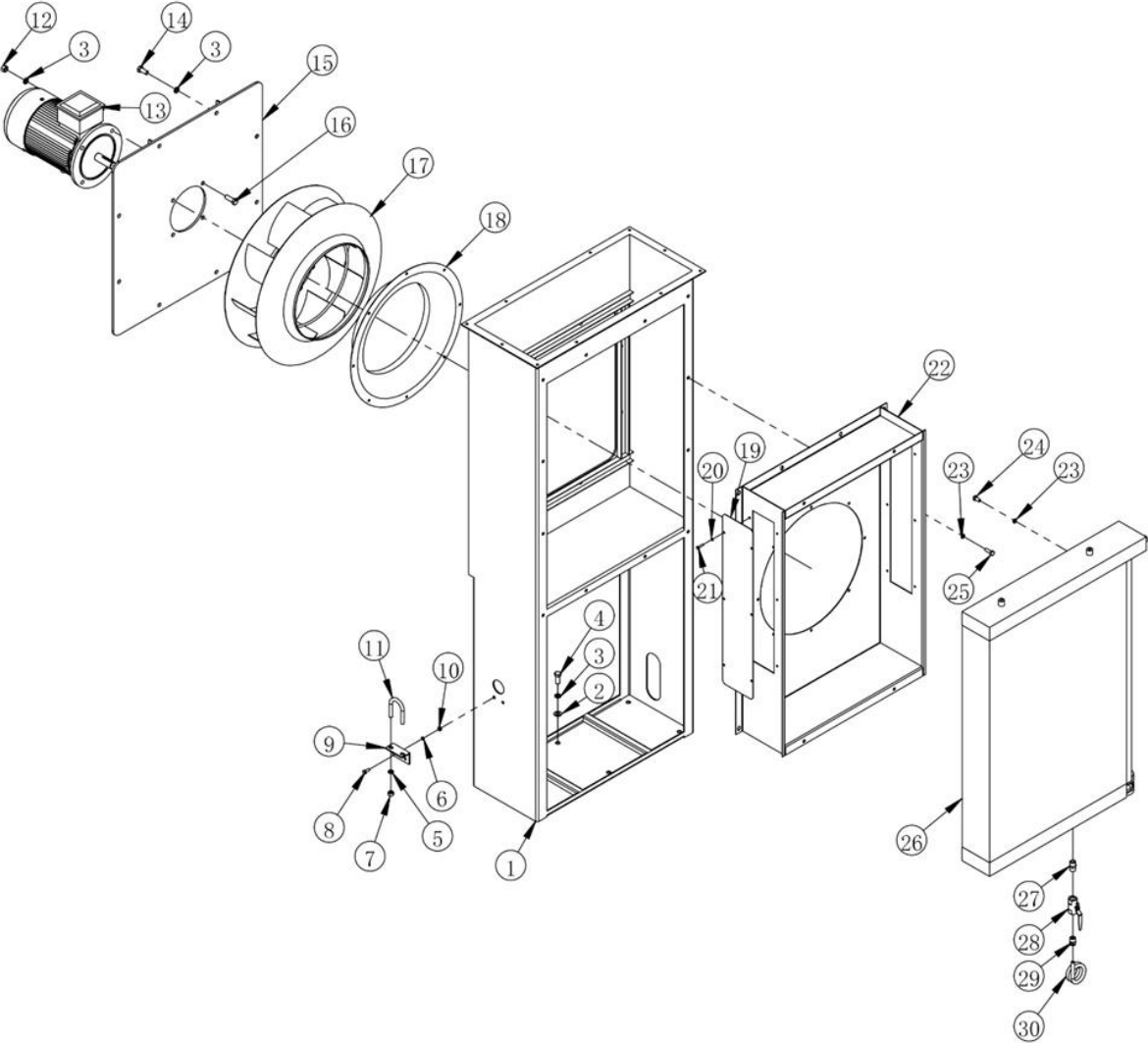
Driving System and Electrical Motor



Driving System and Electrical Motor

NO.	Version	PN	DESCRIPTION	QTY	REMARK
1		64090 46043 27	Motor(WEG)	1	
2		01306 16070 00	Bolt	1	M16×70
3		01365 16000 00	Washer	1	16
4		01322 16000 00	Nut	1	M16
5		01347 10010 00	Set screw	2	M10X10
6		01905 09006 50	Half coupling	1	
7		01908 09000 00	Elastomer	1	
8		01905 09010 00	Half coupling	1	
9		01344 20060 00	Stud	6	M20×60
10		01365 20000 00	Bolt	6	20
11		SKY258NV-26	Motor adaptor	1	

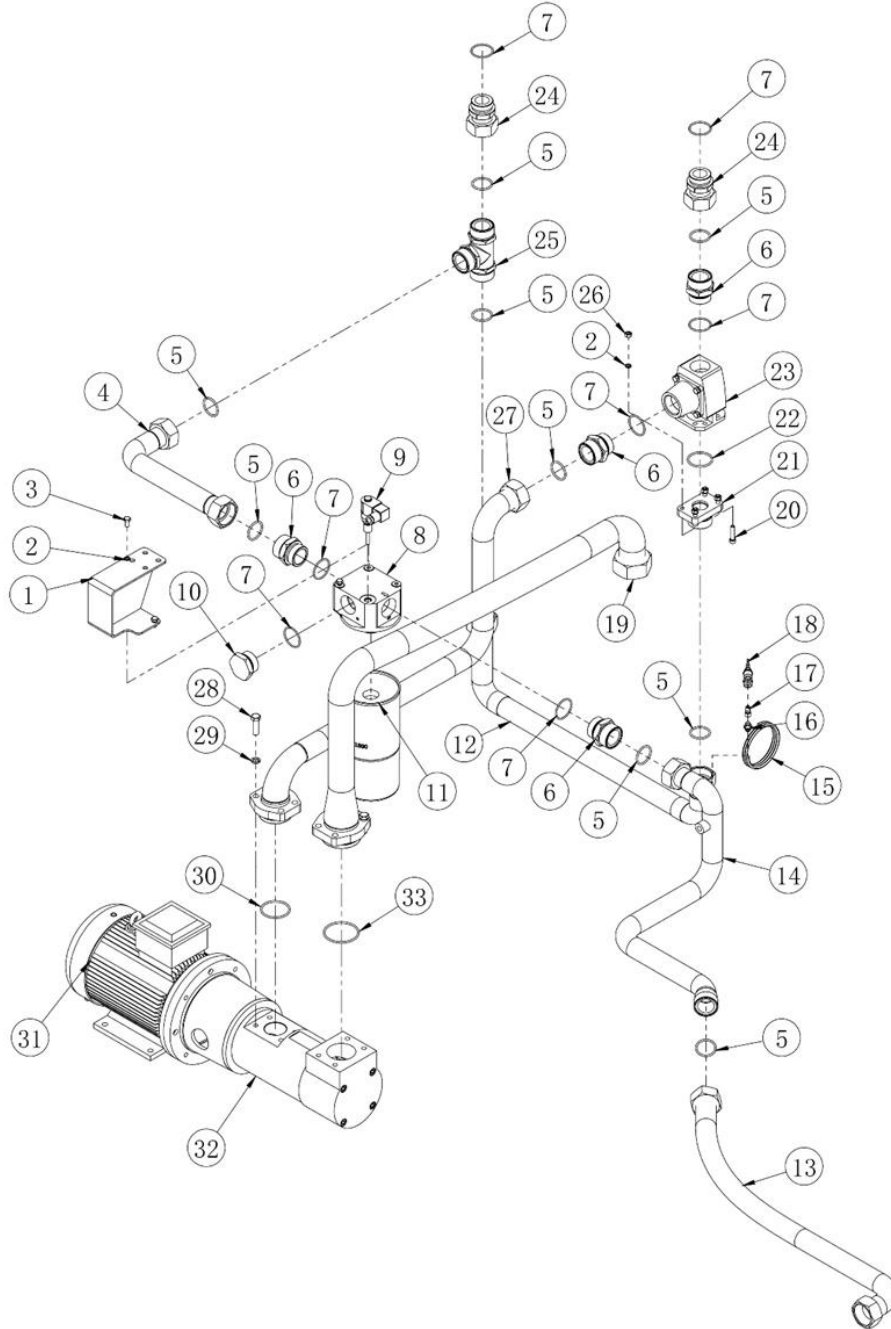
Air Cooler



Air Cooler

NO.	Version	PN	DESCRIPTION	QTY	REMARK
1		93031 05001 00	Centrifugal fan support	1	
2		01366 14000 00	Washer	1	14
3		01365 14000 00	Washer	6	14
4		01307 14035 00	Bolt	1	M14×35
5		01365 12000 00	Washer	1	12
6		01365 08000 00	Washer	2	8
7		01322 12000 00	Nut	1	M12
8		01307 08020 00	Bolt	2	M8×20
9		92217 06007 00	Support	1	
10		01322 08000 00	Nut	2	M8
11		01313 04500 00	U bolt	1	45
12		01322 14000 00	Nut	4	M14
13		66002 46651 25	Motor(WEG)	1	
14		01307 14030 00	Bolt	1	M14×30
15		90217 05003 00	Fan motor fixing plate	1	
16		01307 14040 00	Bolt	4	M14×40
17		07262 56028 10	Impeller	1	
18		07262 56000 20	Collector	1	
19		92217 05006 05	Cooler support mesh plate	2	
20		01365 06000 00	Washer	12	6
21		01307 06025 00	Bolt	12	M6×25
22		20177 05001 00	Cooler support	1	
23		01365 10000 00	Washer	2	10
24		01307 10020 00	Bolt	1	M10×20
25		01307 10030 00	Bolt	1	M10×30
26		92217 05010 10	Oil cooler	1	
27		91001 05005 00	Joint	1	
28		01613 01545 00	Ball valve	1	DN15
29		01543 21012 00	Joint	1	
30		02917 12500 00	Nylon pipe	1	

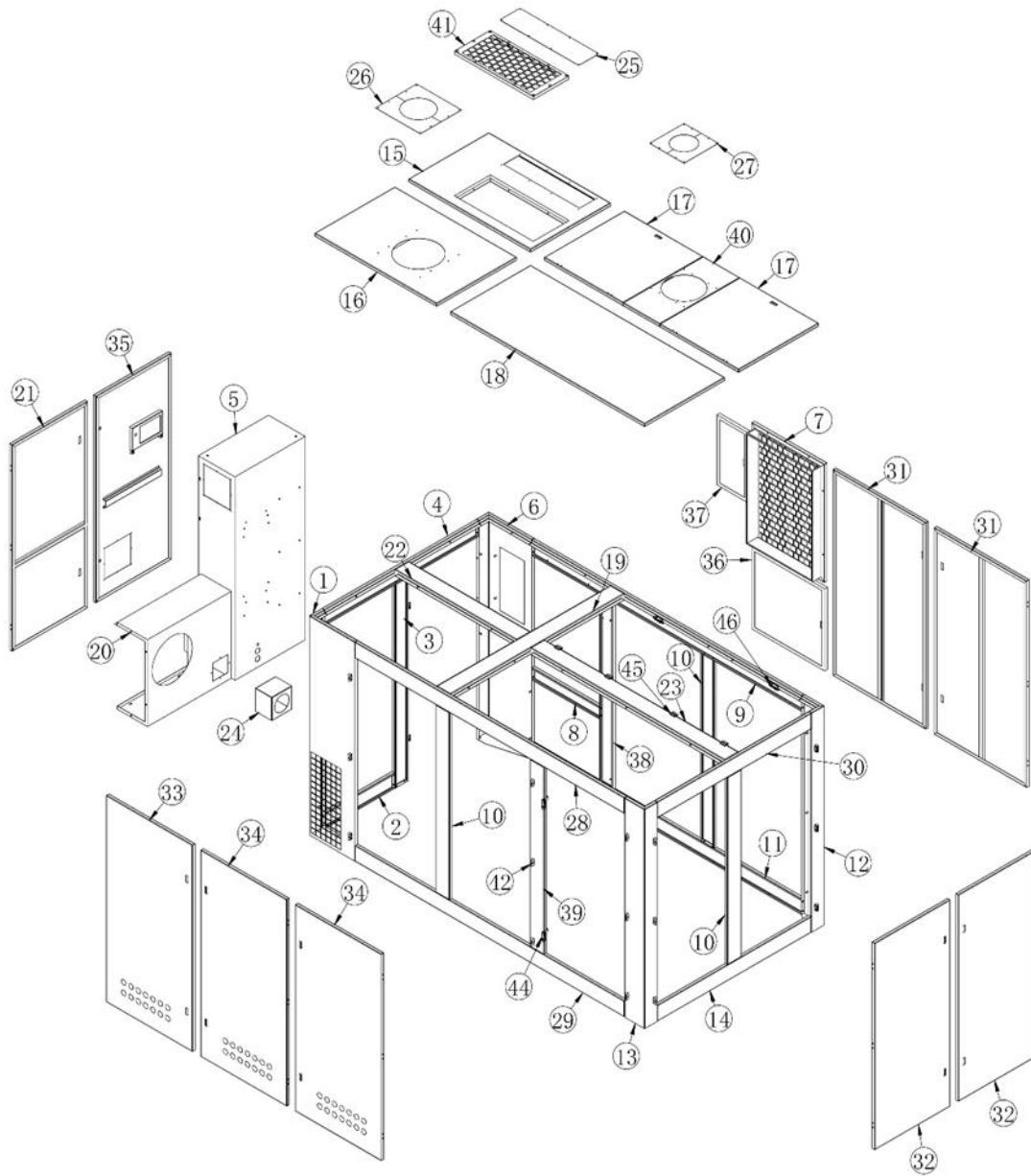
Fluid Piping



Fluid Piping

NO.	Version	PN	DESCRIPTION	QTY	REMARK
1		93031 06001 00	Oil filter mounting plate	1	
2		01365 08000 00	Washer	8	8
3		01307 08016 00	Bolt	4	M8×16
4		92217 06003 00	Oil pipe	1	Thermal to cooler
5		02901 03870 30	O ring	9	38.7X3.55
6		90001 07003 00	Joint	4	
7		02901 92400 30	O ring	7	3-924
8		07705 04005 06	Oil filter seat	1	
9		02809 02000 00	Oil filter indicator	1	
10		92217 06008 00	Plug	1	
11		537705 331800	Oil filter	1	
12		92217 06004 00	Oil pipe	1	Cooler to oil filter seat
13		93031 06005 00	Oil pipe	1	Inlet airend
14		93031 06002 00	Oil pipe	1	Oil filter seat to airend
15		92217 06150 00	Oil pipe	1	
16		98018 07011 06	Joint	1	
17		01511 06100 00	Joint	1	
18		01613 00600 99	Sample valve	1	
19		93031 06003 00	Oil pipe	1	Inlet oil pump
20		01344 08035 00	Stud	4	M8×35
21		22404 06100 00	Joint	1	
22		02901 04870 30	O ring	1	48.7X3.55
23		01611 04018 01	Thermal valve	1	
23A*		04004 40000 03	Thermal valve kit	1	O-ring 45x2.65, Valve element, O-ring 67x2.65
24		92001 06004 00	Joint assembly	2	
25		21315 06009 00	Tee joint	1	
26		01322 08000 00	Nut	4	M8
27		93031 06004 00	Oil pipe	1	Outlet oil pump
28		01307 12040 00	Bolt	2	M12×40
29		01365 12000 00	Washer	2	12
30		02901 05800 30	O ring	1	58X3.55
31		64004 46641 25	Motor	1	
32		GR55SMT16B250LGV	Oil pump	1	
33		02901 07100 30	O ring	1	71X3.55

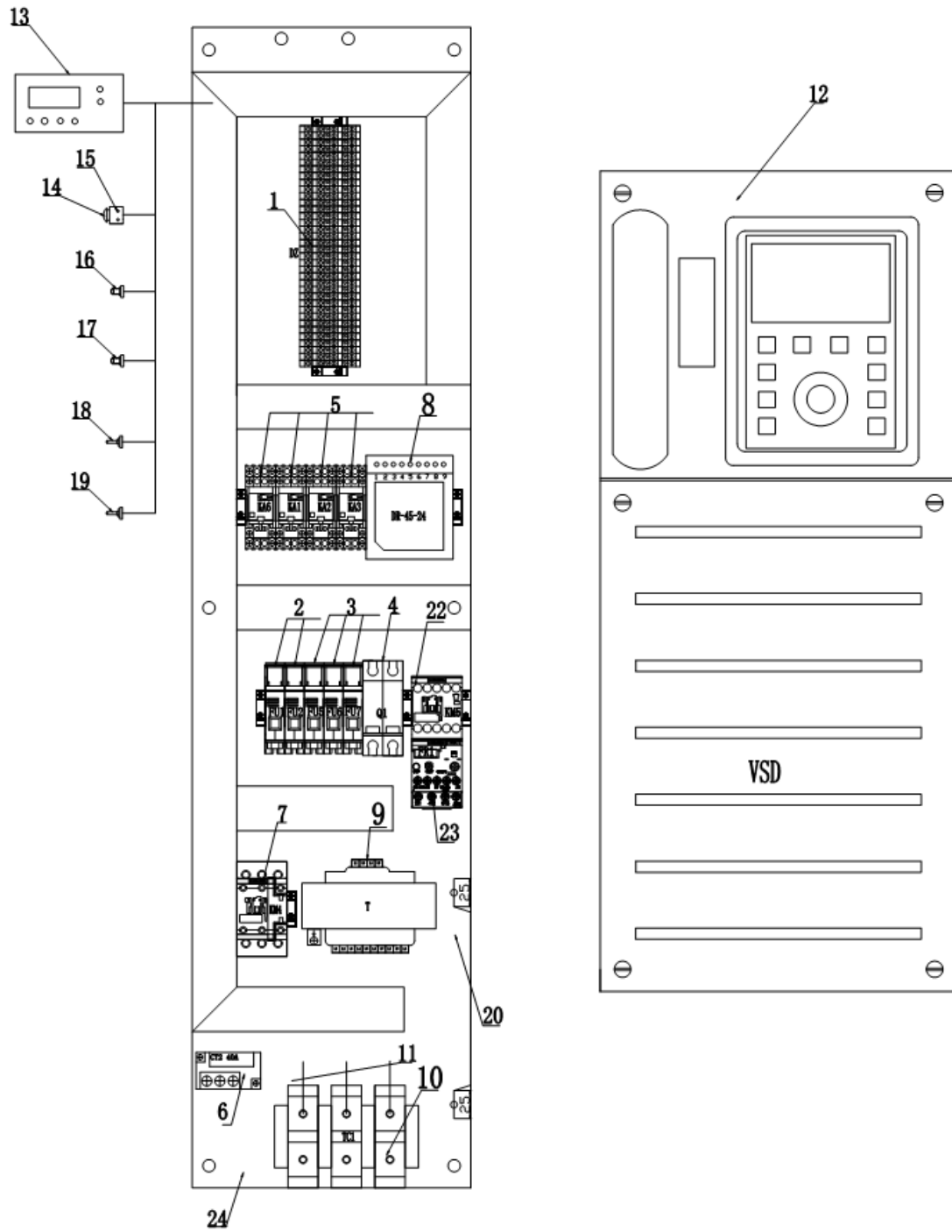
Cabinet



Cabinet

NO.	Version	PN	DESCRIPTION	QTY	REMARK
1		93031 08001 00	Support	1	
2		93031 08002 00	Beam	1	
3		93031 08003 00	Support	1	
4		93031 08004 00	Beam	1	
5		93031 08005 00	Electrical enclosure	1	
6		93031 08006 00	Support	1	
7		93031 08007 00	Air inlet mesh plate	1	
8		93031 08008 00	Beam	1	
9		93031 08009 00	Beam	1	
10		93031 08100 00	Support	3	
11		93031 08110 00	Beam	1	
12		93031 08120 00	Support	1	
13		93031 08130 00	Support	1	
14		93031 08140 00	Beam	1	
15		93031 08150 00	Top cover	1	
16		93031 08160 00	Top cover	1	
17		93031 08170 00	Top cover	2	
18		93031 08180 00	Top cover	1	
19		93031 08190 00	Beam	1	
20		93031 08200 00	Wind scooper	1	
21		93031 08210 00	Door	1	
22		93031 08220 00	Beam	1	
23		93031 08230 00	Beam	1	
24		93031 08240 00	Wind scooper	1	
25		93031 08260 00	Cooler cover	1	
26		93031 08270 00	Air filter baffle	1	
27		93031 08280 00	Discharge baffle	1	
28		93031 08290 00	Beam	1	
29		93031 08300 00	Beam	1	
30		93031 08310 00	Beam	1	
31		93031 08320 00	Door	2	
32		93031 08330 00	Door	2	
33		93031 08340 01	Door	1	
34		93031 08340 02	Door	2	
35		93031 08350 00	Door	1	
36		93031 08360 00	Door	1	
37		93031 08370 00	Door	1	
38		93031 08380 00	Support	1	
39		93031 08390 00	Support	1	
40		93031 08400 00	Top cover	1	
41		20177 08400 00	Top mesh cover	1	
42		02701 20601 00	Hinge	31	
43		02702 71111 03	Lock	2	
44		02702 84301 00	Lock	2	
45		02702 20901 00	Hinge	4	
46		02702 84301 00	Lock	2	
*		07706 09806 06	Frame VSD cabinet filter	2	*Not shown on the drawing
*		07211 25091 20	VSD Vent Fan	2	
*		160004-001	VSD cabinet filters element	1	

Electrical Enclosure



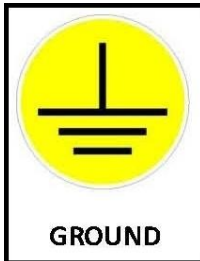
Electrical Enclosure

NO.	PN	DESCRIPTION	QTY	REMARK
1	08703 00004 00	Terminal block	35	DZ
2	02820 00001 00	Fuse block	2	FU1-FU2
3	02820 00001 00	Fuse block	3	FU5-FU7
4	02819 06526 00	Miniature breaker	1	Q1
5	02814 00002 00	Intermediate relay seat	4	KA1-KA3;KA6
	02814 01102 00	Intermediate relay head	4	
6	02824 20040 00	Fan motor current transformer	1	CT2
7	02825 60018 01	Fan motor contactor	1	KM4
8	02808 04524 00	Power switch	1	DR
9	02818 05001 50	Transformer	1	T
10	08703 00095 00	Terminal	3	TC1
11	08704 02070 00	Cable	1.8M	BVR
12	02828 01110 03	Inverter	1	VSD
13	02811 16017 00	Controller	1	XSQ
14	02827 04844 00	Emergency button	1	JT
15	02827 04104 00	Emergency button seat	1	JT
16	02810 00016 00	Pressure sensor	1	DP
17	02810 01572 00	Pressure sensor	1	SP
18	02810 06619 00	Pressure sensor	1	IP
19	02810 30965 00	Temperature sensor	1	DT
20	02829 42524 00	Grounding copper bar	1	JDTP
22	02825 60038 00	Fan motor contactor	1	KM5
23	02814 36116 16	Cooling fan thermal overload relay	1	FR1
24		Electrical control board	1	DKB
*25	02821 28324 00	Fuse	2	FU1-FU2
*26	02821 28322 00	Fuse	3	FU5-FU7

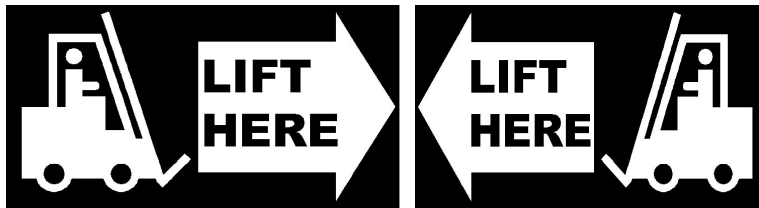
Note: * Items are not shown on the drawing.

Decals

Decals information is shown as following.



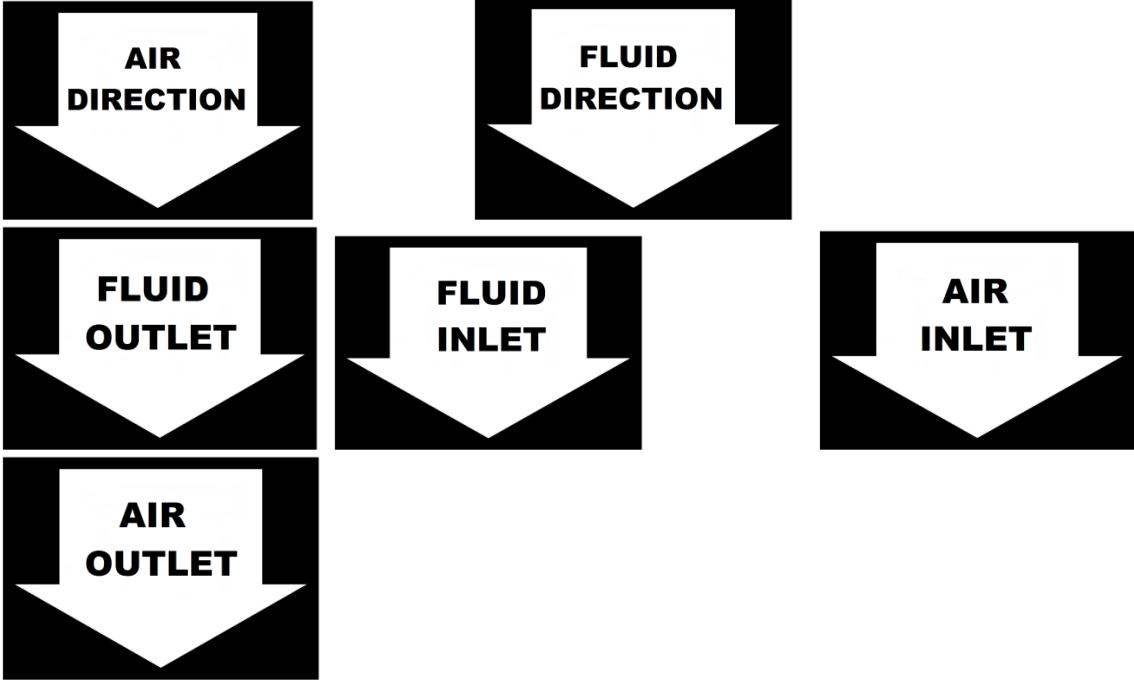
Decals



NOTE:

1. DECALS P/N : 142939

Decals



NOTE:

- 1. DECALS P/N : 142939

Standard Terms and Conditions

These terms and conditions govern the sale of Products (“Rotary Screw Air Compressors and parts”) and provisions of services by Kaishan Compressor USA, LLC (Seller) and its authorized representative or buyer. These terms and conditions (“Agreement”) take precedence over Buyer’s supplemental or conflicting terms and conditions to which notice of objection is hereby given. Neither Seller’s commencement of performance or delivery shall be deemed or construed as acceptance of Buyer’s supplemental or conflicting terms and conditions. KCA’s failure to object to conflicting or additional terms will not change or add to the terms of this agreement. Buyer’s acceptance of the Products and/or Services from Seller shall be deemed to constitute acceptance of the terms and conditions contained herein.

Orders: All orders placed by Buyer are subject to acceptance by Seller. Orders may not be canceled or rescheduled without Seller’s written consent. All orders must identify the products, unit quantities, part numbers, applicable prices and requested delivery dates of the Products being purchased. Seller may at its sole discretion allocate Product among its Buyer. Seller may designate certain Products and Services as non-cancelable, non-returnable and the sale of such Products shall be subject to the special terms and conditions contained in Seller’s Customer Acknowledgement or Non-Returnable Product Form, which shall prevail and supersede any inconsistent terms and conditions contained herein or elsewhere.

Prices: The prices of the Products are those prices specified on the front of the invoice or contained within an agreed written contract. Price quotations shall automatically expire in thirty (30) days from the date issued, or as otherwise stated in the quotation.

Taxes: Unless otherwise agreed to in writing by Seller, all prices quoted are exclusive of transportation and insurance costs, duties, and all taxes including federal, state and local sales, excise and value added, goods and services taxes, and any other taxes. Buyer agrees to indemnify and hold Seller harmless for any liability for tax in connection with the sale, as well as the collection or withholding thereof, including penalties and interest thereon. When applicable, transportation and taxes shall appear as separate items on Seller’s invoice.

Payment: Payment may be made by check, money order, credit card, or wire transfer (all fees are borne by the Buyer). Where Seller has extended credit to Buyer, terms of payment shall be net thirty (30) days from date of invoice, without offset or deduction. On any past due invoice, Seller may impose a monthly interest rate. If Buyer fails to make the required payments the Seller will impose the interest rate each month. If Buyer fails to make each payment when it is due, Seller reserves the right to withdraw credit and thereby suspend or cancel performance under any or all purchase orders or agreements in which Seller has extended credit to Buyer. In the event of default by Buyer, Seller shall be entitled to costs, fees, and expenses including but not limited to recovery of attorney fees, court costs and fees, and collections costs.

Standard Terms and Conditions

Delivery and Title: The locations of shipment delivery will be made according to the Seller and Buyer agreement. Title and risk of loss pass to the Buyer upon delivery of the Product to the carrier. Seller's delivery dates are estimates only and Seller is not liable for delays in delivery or for failure to perform due to causes beyond the reasonable control of the Seller, nor shall the carrier be deemed an agent of the Seller. A delayed delivery of any part of an Order does not entitle Buyer to cancel other deliveries. KCA will comply with various federal, state and local laws and regulation concerning occupational health, safety and environment concerns. Buyer has full responsibility to comply with those laws and regulations during the installation and operation of the equipment.

Acceptance / Returns: Shipments will be deemed to have been accepted by Buyer upon delivery of the said shipments to Buyer unless rejected upon receipt. Buyer shall perform all inspections and tests. Buyer deems necessary as promptly as possible but in no event later than 7 days after receipt of Products, at which time Buyer will be deemed to have irrevocably accepted the Products. Any discrepancy in shipment quantity must be reported within 7 days after receipt of Products. Buyer may not return Products without a Return Material Authorization ("RMA") number. RMA's valid for 30 days from the date issued.

Standard Warranty: Buyer will honor Product warranties and indemnities authorized by the manufacturer, including any transferable. 90 days warranty is given for service parts from receipt date. Seller warrants to Buyer that Products purchased hereunder will conform to the applicable manufacturer's specifications for such products and that any value-added work performed by Seller on such Products will conform to applicable Buyer's specifications. If Seller breaches this warranty, Buyer's remedy is limited to (at Seller's election) (1) refund of Buyer's purchase price for such Product (without interest), (2) repair of such Products, or (3) replacement of such Products provided that such Products must be returned to Seller, along with acceptable evidence of purchase within 13 days from date of delivery, transportation charges prepaid. No warranty will apply if the Product has been subject to misuse, neglect, accident or modification.

Limitation of Liabilities: Buyer shall not be entitled to, and Seller shall not be liable for, loss of profit or revenue, promotional or manufacturing expenses, overheads expenses, business interruption cost, loss of data, removal or reinstallation costs, injury to reputation of buyer, punitive damages, loss of contractor orders or any indirect, special, incidental or consequential damages of any nature. Buyer's recovery from seller for any claim shall not exceed the purchase price paid for the affected products irrespective of the nature of the claim whether in contract, tort, warranty, or otherwise. Buyer will indemnify, defend and hold seller harmless from any claims based on (a) Seller's compliance with buyer's designs, specifications, or instructions, (b) Modification of any products by anyone other than Seller, or (c) use in combination with other products not supplied by seller.

Standard Terms and Conditions

Use of Products: Unless otherwise specified. Products sold by Seller are not designed, intended or authorized for use in life support, life sustaining, nuclear, or other applications in which the failure of such Products could reasonably be expected to result in personal injury, loss of life or catastrophic property damage. If buyer uses or sales the Products for use in any such applications: (1) Buyer acknowledges that such use or sale is at Buyer's sole risk; (2) Buyer agrees that Seller and the manufacturer of the Products are not liable, in whole or in part, for any claim or damage arising from such use; and (3) Buyer agrees to indemnify, defend and hold Seller and the manufacturer of the Products harmless from and against any and all claims, damages, losses, costs, expenses and liabilities arising out of or in connection with such use or sale.

Force Majeure: Seller is not liable for failure to fulfill its obligations for any accepted Order or for delays in delivery due to causes beyond Seller's reasonable control including, but not limited to, acts of God, natural or artificial disaster, riot, war, strike, delay by carrier, shortage of Product, acts or omissions of other parties, acts or omissions of civil or military authority, Government priorities, changes in law, material shortages, fire, strikes, floods, epidemics, quarantine restrictions, acts of terrorism, delays in transportation or inability to obtain labor, materials or products through its regular sources, which shall be considered as an event of force majeure excusing Seller from performance and barring remedies for non-performance. In an event of force majeure condition, the Seller's time for performance shall be extended for a period equal to the time lost as a consequence of the force majeure condition without subjecting Seller to any liability or penalty. Seller may, at its option, cancel the remaining performance, without any liability or penalty, by giving notice of such cancellation to the Buyer.

General: (a) Seller will comply with state law for any dispute from buyer. (b) Buyer may not assign this Agreement without the prior written consent of Seller. Seller or its affiliates may perform the obligations under this Agreement. This Agreement is binding on successor and assigns, (c) Products, including software or other intellectual property, are subject to any applicable rights of third parties, such as patents, copyrights and/or user licenses.

Appendix

(If your machine is standard, this page is blank.)

Contact Information

Kaishan Compressor, LLC.,
Add.: 15445 Industrial Park Dr., Loxley, AL, Post code: 36551
Office number: +1 251-202-0577
www.KaishanUSA.com