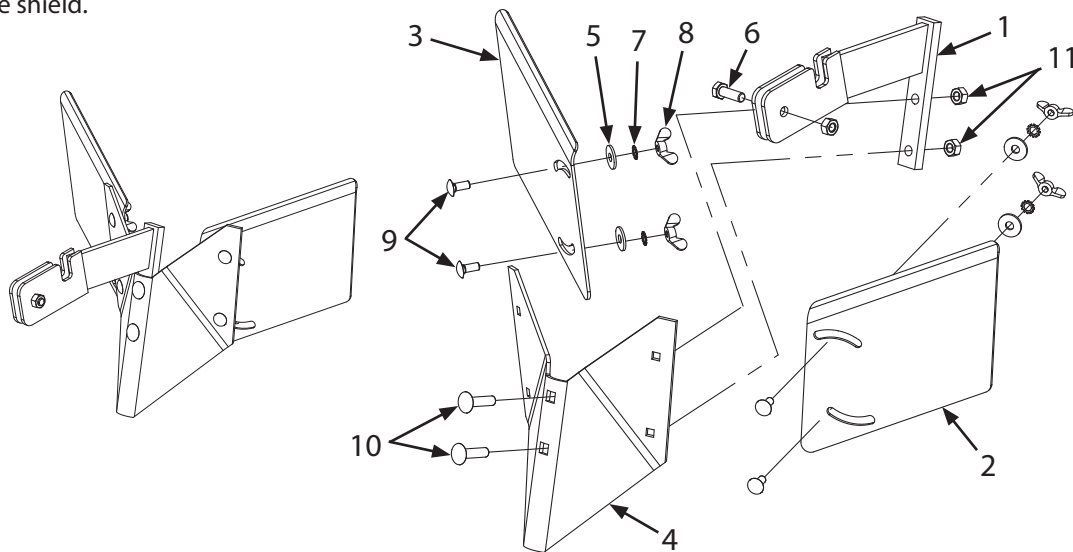
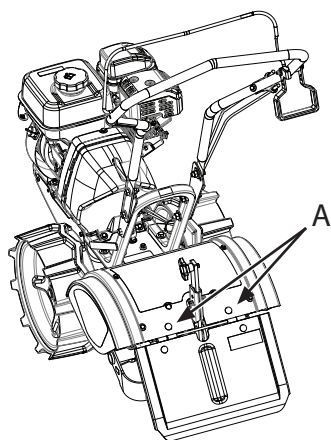


15683 HILLER/FURROWER KIT (OPTIONAL ACCESSORY)

Thank you for purchasing a hiller/furrower attachment for your rototiller. We know that you will be pleased with the many uses you can accomplish with this handy tool.

INSTALLATION

1. Attach the bracket (1) to the shovel (4) using two M10 x 40mm carriage bolts (10) and M10 locknuts (11).
NOTE: The M10 carriage bolts (10) are installed from the front of the shovel (4), while the bracket (1) is installed from the back of the shovel (4).
2. Align the curved slots of the left wing (2) with the square holes on the left side of the shovel (4). The small bend of the left wing (2) should be facing up. Using two M8 x 20mm carriage bolts (9), flat washers (5), external tooth washers (7), and wing nuts (8), secure the left wing (2) to the shovel (4). Repeat step to install the right wing (3).
NOTE: Adjust the left and right wing (2, 3) to the correct hill size before tightening the wing nuts (8).
3. Remove two carriage bolts (A) that hold the tail to the tine shield. Slide the slotted end of the bracket (1) over drag stake mount (under the tail hood of your tiller).
4. Align the holes in the bracket (1) with the single hole in the middle of the drag stake mount. Using the M10 x 30mm bolt (6) and a M10 locknut (11), secure the hiller/furrower to the tiller.
NOTE: There is an extra M10 x 30mm bolt (6) and M10 locknut (11) that is used for the 25127 adapter only.
5. Re-attach the tail to the tine shield.



PARTS BREAKDOWN

KEY #	PART #	DESCRIPTION	QTY.
1	16513	BRACKET HILLER/FURROWER RED	1
2	16514	WING LEFT HILLER/FURROWER RED	1
3	16515	WING RIGHT HILLER/FURROWER RED	1
4	16516	SHOVEL HILLER/FURROWER RED	1
5	20143	WASHER M8 X 16 X 1.5 MM GR8.8 ZN	4
6	21247	BOLT M10 X 1.5 X 30 MM HHCS GR8.8 ZN	2
7	21810	WASHER M8 EXTERNAL TOOTH LOCK	4
8	23204	NUT M8 X 1.25 MM W GR8 ZN	4
9	23205	BOLT M8 X 1.25 X 20 MM CRG GR8 ZN F-T	4

KEY #	PART #	DESCRIPTION	QTY.
10	23206	BOLT M10 X 1.5 X 40 MM CRG GR8 ZN F-T	2
11	W1265V0903	NUT M10 HNYLK GR8.8 ZN	4
-	25126	HILLER ADAPTER HUSQVARNA	1
-	25127	HILLER ADAPTER SOUTHLAND/POWERMATE	1
-	25128	HILLER ADAPTER TROY-BILT/CUB CADET	1

All weights, specifications and features are approximate and are subject to change without notice. Due to continuous product improvements, product images may not be exact. Items used for props not included. Some assembly may be required.

P/N: 25133
ECN: 11711
REV2: 06/20/17
© 2017 Ardisam, Inc.
All Rights Reserved

25126 - Husqvarna Hiller/Furrower Adapter

ASSEMBLY INSTRUCTIONS

1. Remove the standard depth stake on the back of the tiller.
SEE FIGURE 1
2. Slide the adapter up into the slot the standard depth stake was in. **SEE FIGURE 2**
3. Secure the adapter by inserting the pin above the tiller hood into the top hole of the adapter. **SEE FIGURE 3**
4. Secure the hiller/furrower to the adapter with M10 x 30mm bolt (6) and M10 locknut (11). **SEE FIGURE 4**

NOTE: When tightening the hiller/furrower to the adapter, make sure the bracket on the hiller/furrower is in complete contact with the adapter and not tightening to the depth stake mount of the tiller.



FIGURE 1

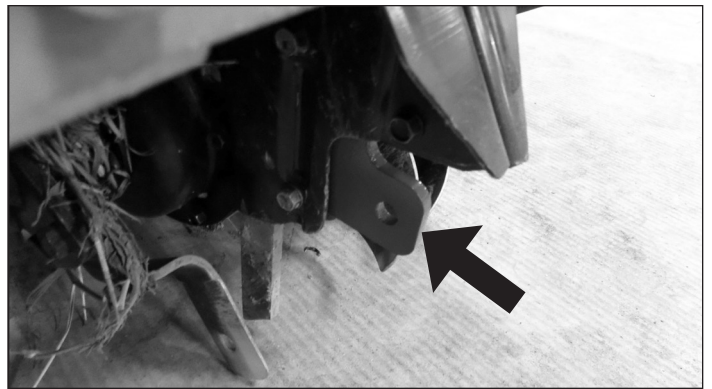


FIGURE 2



FIGURE 3



FIGURE 4

25127 - Southland & Powermate Hiller/Furrower Adapter

ASSEMBLY INSTRUCTIONS

1. Slide the standard drag stake out of the drag stake mount on the back of the tiller and reinstall it, so that the top of the drag stake is now the bottom. **SEE FIGURES 1 & 2**
2. Re-insert the pin for the drag stake, so that the drag stake end sits flush with the bottom of the mount. **SEE FIGURE 2**

Place the split side of the adapter over the drag stake and align the holes. Secure the adapter to the standard drag stake with M10 x 30mm bolt (6) and M10 locknut (11).

SEE FIGURE 3

NOTE: This adapter uses the extra M10 x 30mm bolt (6) and M10 locknut (11).

3. Secure the hiller/furrower to the adapter with M10 x 30mm bolt (6) and M10 locknut (11). **SEE FIGURE 4**

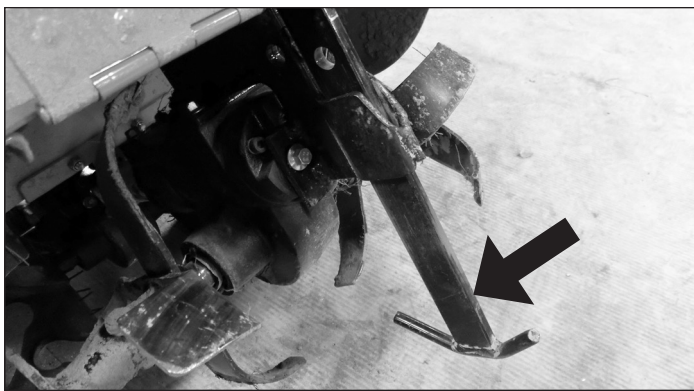


FIGURE 1

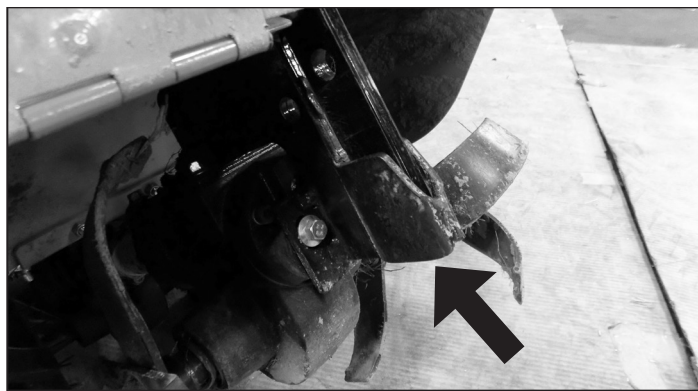


FIGURE 2



FIGURE 3

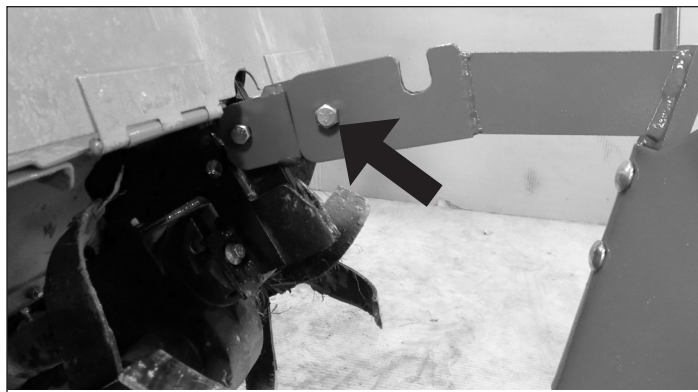


FIGURE 4

25128 - Troy-Bilt & Cub Cadet Hiller/Furrower Adapter

ASSEMBLY INSTRUCTIONS

1. Remove the bigger bolt that holds on the kick-back stake and set aside. **SEE FIGURE 1**
2. Loosen the smaller nut on the kick-back stake to the end of the bolt's threads. **SEE FIGURE 2**
NOTE: This allows the adapter to slip into position better.
3. Place the adapter into the square space of the kick-back stake mount. Secure the adapter and kick-back stake to drag stake mount with previously removed bigger bolt. **SEE FIGURE 3**
4. Once the adapter is in place, tighten up smaller nut.
5. Place the hiller/furrower bracket on the adapter by sliding the bracket underneath the adapter. Adapter tail must sit on top of bracket. **SEE FIGURE 4**
6. Secure the hiller/furrower to the adapter with M10 x 30mm bolt (6) and M10 locknut (11). **SEE FIGURE 4**

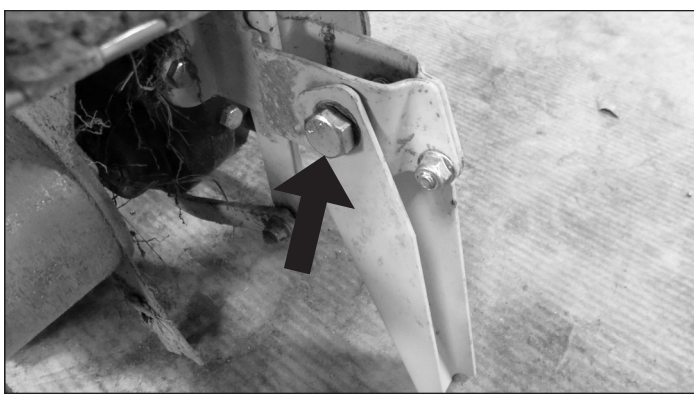
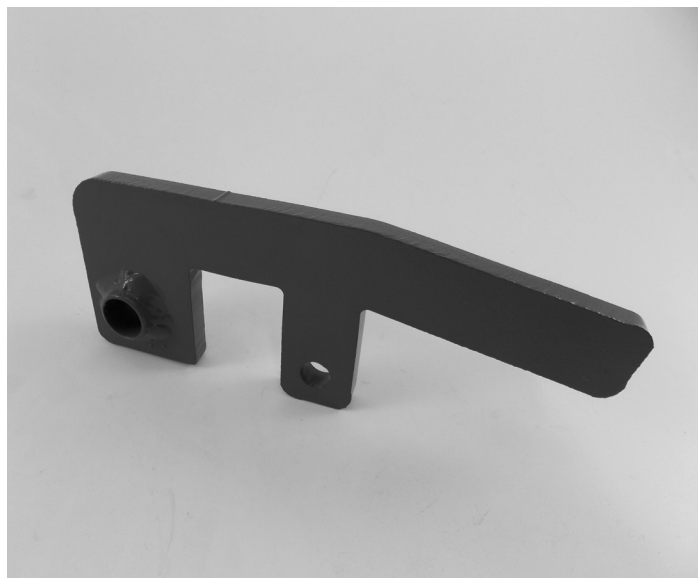


FIGURE 1

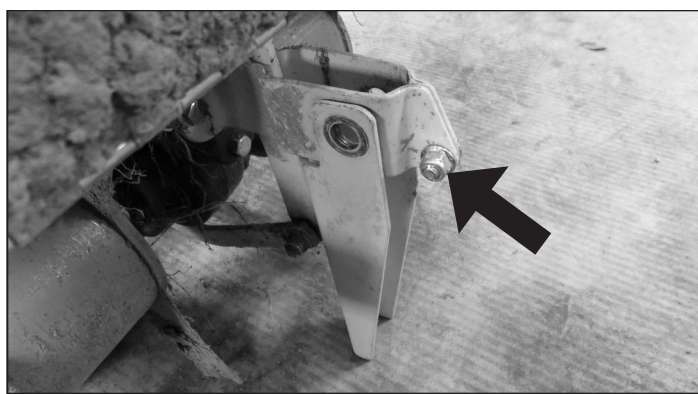


FIGURE 2



FIGURE 3

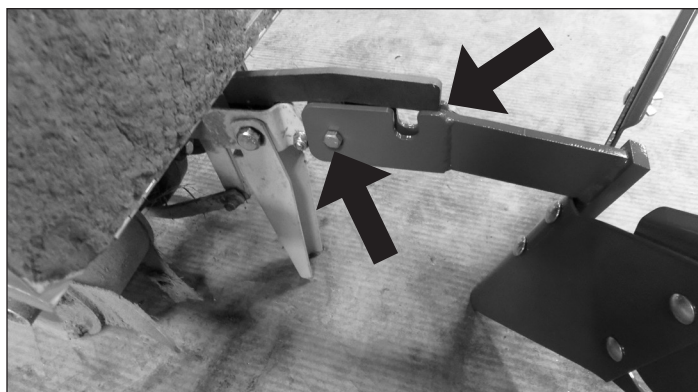


FIGURE 4