

Specifications

| | |
|------------------------------|--|
| Engine | 725 EXI Series Briggs and Stratton. See your Engine owner's manual for detailed Engine |
| Cutting Width | 22" |
| Cutting Heights | 3" to 6" in 1/2" increments |
| Cord Tip Speed (mph) | 230 |
| Cord Size | 0.155" (Blue) or 0.175" (Green) |
| Offset Maximum Reach | 45" nominally, 60" or 72" in offset position |
| Max Operating Angle | 20 Degrees* |
| Frame | 11 Gauge Steel, Painted |
| Spindle Housing | Cast Aluminum |
| Drive Belt | 3L x 74", Aramid Reinforced |
| Cord Line Plates | Cast Aluminum |
| Mow-Ball | Heat, Impact, and UV-Resistant Polymer |
| Wheels | 9" Diameter x 3.5" Wide |
| Hitch Type (pin/ball) | 1/2" diameter clevis pin; 2" Ball Hitch Compatible w/ Additional Kit |
| Hitch Height | 6" - 21" in 1.5" increments |
| Machine Dimensions | 81" L x 60" W x 23" H |
| Machine Weight | 262 lbs. |
| Ground Clearance | 4" minimum |
| Tow Bar Length | 40" |

*You can trim and mow on slopes up to 20 degrees. Continuous use on slopes steeper than 20 degrees may deprive the Engine of adequate lubrication, and damage components.

ASSEMBLY

Hardware Bag Parts (Figure 2 and Table Below)

| Item | Part no. | Description | QTY |
|------|----------|---|-----|
| 1 | 34326 | Bolt, Hex, Flange, GR8, 3/8-16 x 3" LG | 2 |
| 2 | 18737 | Pin, Clevis, 1/2" OD x 4.5" LG | 1 |
| 3 | 24538 | Linch Pin, 3/16" X 1-9/16" | 1 |
| 4 | 10851 | Spacer .76"ID 1.50"OD .50"TH | 6 |
| 5 | 10179 | Washer, Flat, 1/2" | 2 |
| 6 | 18081 | Washer, Lock, 3/8" | 2 |
| 7 | 16003 | Pin, Hitch Clip, 1/2" To 9/16", .12" Wire | 1 |

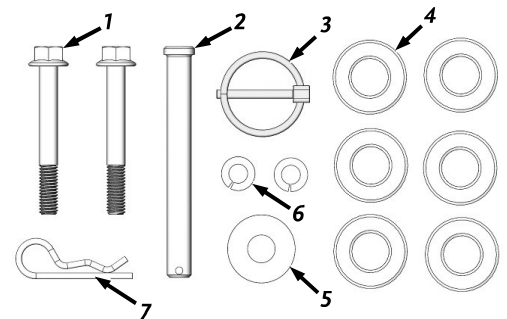


Figure 2

Compare the contents of the Hardware Bag with the list above and Figure 2. If you have any questions please contact us at www.DRpower.com or call 1-800-DR-OWNER (376-9637) for assistance.

Tools Needed:

- 9/16" Wrench
- 3/4" Wrench

1. Position the Tow Bar Assembly onto the Pivot Assembly and secure with two Flange Bolts and Lock Washers using a 9/16" Wrench (**Figure 3**).

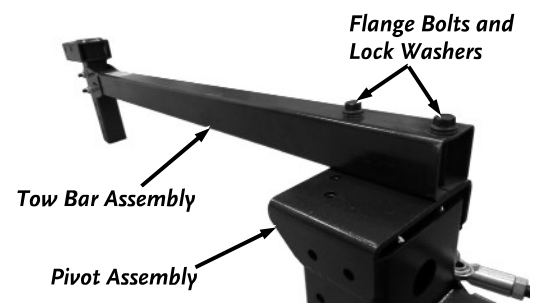


Figure 3