

# DEWALT®

## 50', 3/4" ID TUBING

High density polyethylene, ensures resistance from temperature and chemicals



## MOUNTING BRACKETS

Anchor 2 hole brackets for secure pipe layout

## OUTLET MANIFOLD

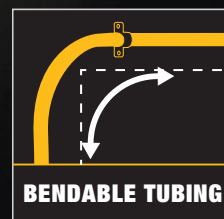
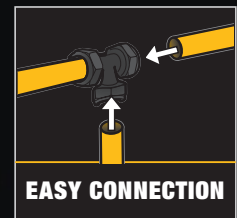
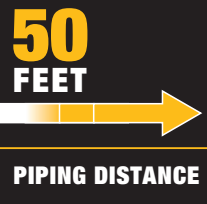
Solid aluminum manifolds to customize piping configuration

# COMPRESSED AIR PIPING ACCESSORIES

DESIGNED TO EXPAND YOUR COMPRESSED AIR PIPING SYSTEM

EASY TO INSTALL LIGHTWEIGHT REUSABLE PARTS

FOR PROFESSIONAL AND GARAGE WORKSHOPS



**GUARANTEED TOUGH®**

## DXCM080-0115

### 50', 3/4" ID TUBING

**Tubing Outer and Inner Material:** High density polyethylene, ensures resistance from temperature and chemicals.

**Core Material:** Aluminum provides maximum strength and allows quick and easy molding and holds it's shape

**Operating Pressure at 73°: 200 PSI**

**Operating Pressure at 140°: 160 PSI**

Tubing is corrosion and abrasion resistant



Coupler, Filter and Regulator are not included

Customize work space to easily tap air where you need it.

## DXCM072-0035

### 3/8" NPT DRAIN VALVE

3/8" NPT Threads

Stainless Steel with 1/4 Turn Switch

Eliminates moisture and condensation to ensure air piping longevity



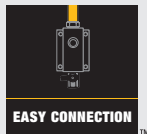
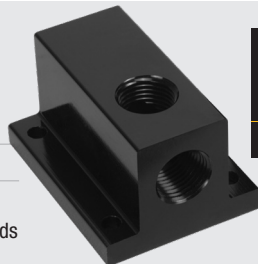
## DXCM041-0114

### ALUMINUM OUTLET MANIFOLD

Inlet 1/2" NPT, Outlet 1/2" NPT

Solid Aluminum Construction

Create piping design and installation configuration with additional manifolds



## DXCM068-0137

### 1/2" NPT STRAIGHT FITTING

1/2" NPT Threads

Solid Brass Construction

Compression style with double O-Ring seal, split rings allows for disassembly and eliminates air leaks. Connects to manifold and tubing



## DXCM069-0043

### 3/4" TEE FITTINGS

Solid Brass Construction

Allows for connection of additional pipe and maintains air pressure flow

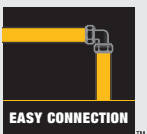


## DXCM064-0145

### 3/4" 90° Elbow Fitting

Solid Brass Construction

Reroutes air piping tubing around corners and tight spaces



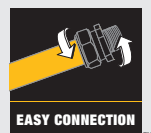
## DXCM068-0138

### 3/4" NPT STRAIGHT FITTING

3/4" NPT Threads

Solid Brass Construction

Compression style with double O-Ring seal, split rings allows for disassembly and eliminates air leaks. Connects to regulator and tubing



## DXCM064-0146

### 3/4" 135° Elbow Fitting

Solid Brass Construction

Reroutes air piping tubing around corners and tight spaces



## DXCM103-0212

### 10 PCS STEEL MOUNTING BRACKETS

Place 1 Every 5'

Durable double sided steel mounting brackets for additional support and design configuration

