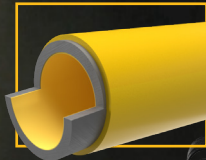


# DEWALT

## 3/4" COMPRESSED AIR PIPING SYSTEM

### 100' 3/4" TUBING

3 Flexible layers up to 200 PSI operating pressure



### MOUNTING BRACKETS

20 Steel brackets



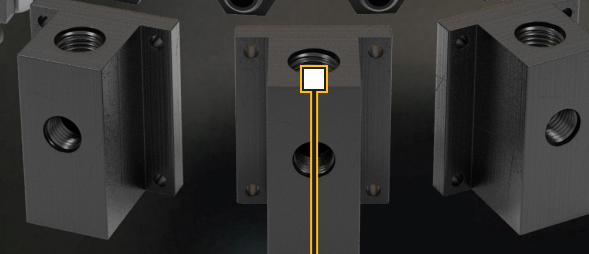
### DRAIN VALVES

Eliminate moisture to protect piping and tools



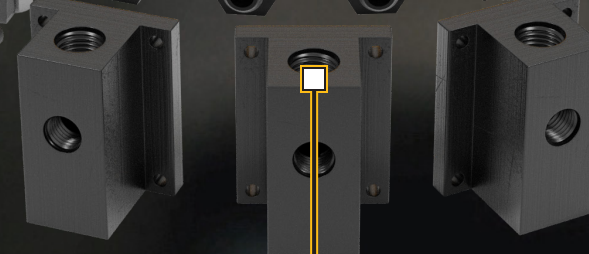
### FITTINGS

Connects additional piping and maintains maximum air pressure



### OUTLET MANIFOLD

3 Aluminum outlets for additional design and installation configurations



**COMPRESSED AIR**<sup>™</sup>  
BRING IT WHERE  
YOU NEED IT

EXTEND THE REACH OF YOUR COMPRESSOR BY SETTING UP MULTIPLE WORKSTATIONS WITH THE DEWALT COMPRESSED AIR PIPING SYSTEM

THE MULTI LAYER PIPING SYSTEM IS EASY TO SHAPE AND FORM ALLOWING FOR A FAST INSTALLATION

CORROSION; AND ABRASION RESISTANT TO ENSURE NO TEARS, LEAKS OR BURSTING WITHIN THE SYSTEM



Coupler not included

DXCM024-0400

**GUARANTEED TOUGH.®**

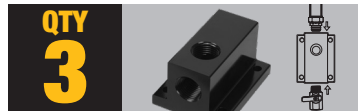


Tubing outer and inner material made of high density polyethylene, and aluminum middle layer to ensure strength and durability. Inner tubing provides efficient air pressure and prevents corrosion. Kit accessories are made from brass, aluminum and steel to maintain air pressure, flow and eliminate leaks. Powder coated finish to eliminate corrosion and rust.

100' 3/4" Tubing



Aluminum Outlet Manifold



3/4" Elbow Fitting



3/8" NPT Drain Valve



3/4" Tee Fitting



1/2" NPT Straight Fitting



Steel Mounting Brackets



3/4" NPT Straight Fitting



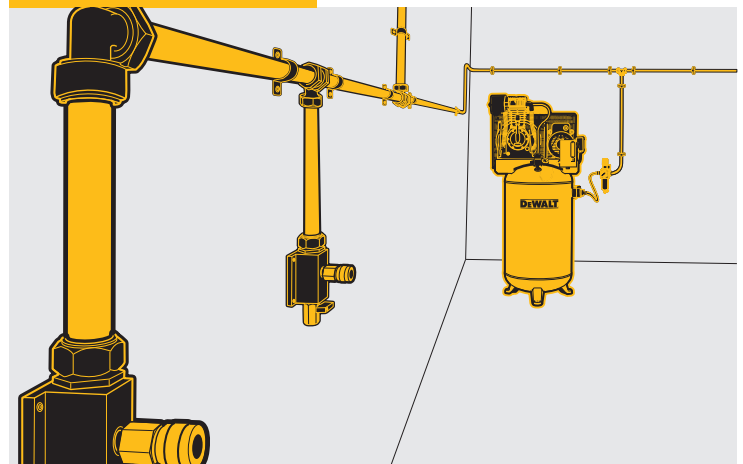
3/8" Deburring Tool



Tube Cutter



## TYPICAL SETUP



## SPECIFICATIONS

Operating Pressure at 73° F:	200 PSI
Operating Pressure at 140° F:	160 PSI
Tube OD Measurements:	1"
Tube ID Measurements:	3/4"
Mounting Brackets:	Steel
Air Manifolds:	Aluminum
Fittings:	Brass

## TOOL WARRANTY

