

DIXIE CHOPPER®

CLASSIC

MODELS:**2750** 27hp, 50" Deck**2760** 27hp, 60" Deck**3160HP** 31hp, 60" Deck**3572 EFI** 35hp, 72" Deck**3572HP** 35hp, 72" Deck**3672HP** 36hp, 72" Deck

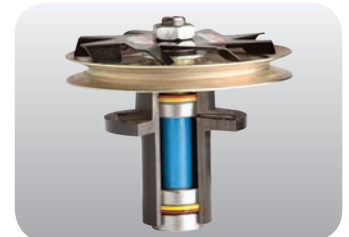
Classic 3160HP shown*

POWER THROUGH COMMERCIAL CUTS QUICKER AND EASIER.

The Classic is the ultimate mowing machine with the perfect combination of commercial quality with industrial features.

- **Power and More Power** – Choose from a 27 or 35 horsepower Kawasaki® FX, 35 horsepower Kohler® EFI, or 36 Vanguard® engine to power through the tough jobs with ease.
- **Strongest Frame** – The Classic boasts the strongest frame in the industry with a 1" x 2" 7 ga steel construction, and has a lifetime warranty against breakage.
- **Over-sized Hydraulics** – Reduces the system pressure within the components to extend drivetrain life expectancy.
- **Complete Discharge Control** – An operator-controlled discharge chute allows you to switch from normal discharge to blocking the chute on the fly.
- **Tried and True Decks** – Offered in three deck widths (50", 60", and 72") the Elite X Deck has been the staple piece to Dixie Chopper's reputation of cleanly cutting all types of grass.
- **New Deck Lift System** – Offers ease of servicing and better ergonomics for operator convenience.

*Actual production model may vary

**High Performance Package** – Comes standard on HP and EFI models.**OCDC** – Open and close the discharge chute on command.**Pumps & Wheel Motors** – Stronger transmissions for extended system life.**Heavy-Duty Spindles & Cooling Fans** – Keep spindles and belts cool.**50", 60", and 72" Elite X Deck** – Handles all grass types in any situation.

5 YEAR
BUMPER-TO-BUMPER
WARRANTY*

*up to 600 hour limited warranty



CLASSIC

	50" Deck	60" Deck		72" Deck		
Model	2750	2760	3160HP	3572 EFI	3572HP	3672HP
Engine						
Manufacturer	Kawasaki® FX			Kohler® EFI	Kawasaki® FX	Vanguard®
Horsepower	27		31	35	35	36
Displacement	852cc	852cc		999cc		993cc
Air-cleaner	2 stage					
Cooling	Air cooled					
Starter	Electric					
Engine warranty	3 Year					

Drive System						
Pumps	Hydro-Gear® 16cc			Hydro-Gear® 21cc		
Wheel motors	Parker® DG280			Parker® DG335		
Ground speed	12 mph			13 mph		
Parking brake	Automotive Style					
Towing capacity	2000 lbs					

Mower Deck						
Deck size	50"	60"		72"		
Acres/hour	4.6	5.2	5.4	6.5		
Cutting height	1.5" - 5"					
OCDC (operator controlled discharge chute)	Standard					
Deck height adjustments	Manual lift, 1/2" increments					
Electric lift	-					
Deck engagement	Ogura® 250 ft-lbs					
Construction	10 ga formed & welded			7 ga formed & welded		
Top plate	7 ga bolted (not welded)					
Blades	3 - 17" x 2.5"	3 - 20.5" x 2.5"		3 - 24" x 2.5"		
Blade tip speed (approximate)	18,800 fpm				18,113 fpm	
Spindles	1.25" effective diameter machined shaft					
Spindle housings	1pc keyless sealed cast iron					
Spindle cooling fans	3					
Anti-scalp rollers	4			5		
Pulleys	Vented split 3/16" steel deep groove					

General						
Battery	12 Volt, 300cca			12 Volt, 475cca		
Digital display	Tachometer, voltmeter, service alerts					
Fuel capacity	8 gallons	11 gallons		14 gallons		
Rear tires	25 x 12-12 Grass Master					
Front tires	15 x 6-8					
Frame	Welded 1 x 2 tube, 7 ga formed					
Fenders	Stainless steel					
Floor-pan	Flip-up, steel					
Seat	Deluxe (non-suspension) seat w/ armrest			Suspension w/ armrest		
Springer forks	Optional			Standard		

Dimensions						
Overall height	50"		51"		52"	
Overall height (rollbar up)	77"	77"		78"		
Overall width	55"	65"			76"	
Overall length	75"		76"		79"	
Overall length (rollbar down)	91"			96"		
Weight	1074 lbs	1134 lbs	1228 lbs	1425 lbs		

DIXIE CHOPPER®
The World's Fastest Lawn Mower.®

6302 E County Road 100 N | Coatesville, IN 46121-9689 | Phone 765.246.7737 | Fax 765.246.6011 | www.dixiechopper.com

Specifications may change as we continuously improve our products. For the latest information and mower specifications, please visit dixiechopper.com or your local Dixie Chopper dealer. Engine horsepower information is provided by the engine manufacturer to be used for comparison only. ©2014 Dixie Chopper. All rights reserved. A division of Jacobsen, A Textron Company.