



INSTRUCTION MANUAL

Air Supply Requirements

1. Supply tool with 90 psig (6.2 bar) of clean, dry air. Higher pressure drastically reduces tool life.
2. Connect tool to air line using pipe, hose, and fitting sizes shown in the diagram on page 12.
3. Minimum compressor requirement: 2 hp (1492 w), 40 gal. (152 l) air tank.

Lubrication

1. Use an air line lubricator with SAE #10 oil, adjusted to two drops per minute. If an air line lubricator cannot be used, add air motor oil to the inlet once a day.
2. The use of synthetic oils for air line lubrication is not recommended because of possible damage to seals, o-rings, hose, rotor blades and polycarbonate oiler/filter bowls.

Operation

1. To insert chisel, press loop on retainer aside, push chisel into cylinder and release loop.
2. Place cutting edge of chisel against workpiece, depress trigger.
Caution: Do not operate tool without chisel in cylinder, or allow the chisel to be driven out of cylinder. Internal damage will result if piston is allowed to strike cylinder wall.

Noise & Vibration Declaration*

Sound pressure level 95.0 dB(A) in accordance with Pneurop 8N-1. For sound power, add 10 dB(A).

Vibration value 13.0 m/s², re. ISO 8662-1.

Maintenance

1. Disassemble and inspect air hammer every three months if the tool is used every day. Replace damaged or worn parts.
2. High wear parts are underlined in the parts list.
3. Dirt or gum deposits cut tool power. To correct this, flush out the tool with gum solvent oil or an equal mixture of SAE #10 oil and kerosene. If outside conditions are in order, disassemble tool, replace worn or damaged parts, clean, reassemble and relubricate.

*These declared values were obtained by laboratory type testing in compliance with the stated standards and are not adequate for use in risk assessments. Values measured in individual work places may be higher than the declared values. The actual exposure values and risk of harm experienced by an individual user are unique and depend upon the way the user works, the workpiece and the workstation design, as well as upon the exposure time and the physical condition of the user. We, Chicago Pneumatic, cannot be held liable for the consequences of using the declared values, instead of values reflecting the actual exposure, in an individual risk assessment in a work place situation over which we have no control.

EC DECLARATION OF CONFORMITY

We, Chicago Pneumatic Tool Company, 1800 Overview Drive, Rock Hill, SC 29730 USA, declare under our sole responsibility that the product to which this declaration relates, is in conformity with the requirements of the Council Directive of June 1989 on the approximation of the laws of the Member States relating to machinery (89/392/EEC).

Machine Name CP717 Air Hammer

Machine Type Power Tool with .498 shank for use with chisel and various .498 shank accessories - No other use is permitted.

Serial No. Tools with No. 94200A or higher

Technical Data

.498 in. (12.6 mm) shank

Stroke 2-11/16 in. (68 mm)

Air pressure 90 psi (6.2 bar)

BPM 1800

Air consumption 7 cfm

Harmonized Standards Applied EN292

National Standards Applied ISO 8662-1, Pneurop 8N-1

Name and Position of Issuer W. A. LeNeveu, President, Chicago Pneumatic Tool Company

Signature of Issuer

Place and Date of Issue Utica, NY 13501 USA, July 31, 1994

MANUFACTURER'S LIMITED WARRANTY

Limited Warranty: The "Products" of the Chicago Pneumatic Tool Company ("CP") are warranted to be free from defects in material and workmanship for one year from the date of purchase. This Warranty applies only to Products purchased new from CP or its authorized dealers. Of course, this Warranty does not apply to products which have been abused, misused, modified, or repaired by someone other than CP or its Authorized Service Representatives. If a CP Product proves defective in material or workmanship within one year after purchase, return it to any CP Factory Service Center or Authorized Service Center for CP tools, transportation prepaid, enclosing your name and address, adequate proof of date of purchase, and a short description of the defect. CP will, at its option, repair or replace defective Products free of charge. Repairs or replacements are warranted as described above for the remainder of the original warranty period. CP's sole liability and your exclusive remedy under this Warranty is limited to repair or replacement of the defective Product. **(There Are No Other Warranties Expressed Or Implied And CP Shall Not Be Liable For Incidental, Consequential, Or Special Damages, Or Any Other Damages, Costs Or Expenses Excepting Only The Cost Or Expense Of Repair Or Replacement As Described Above.)**



WARNING

To reduce risk of injury, everyone using, installing, repairing, maintaining, changing accessories on, or working near this tool must read and understand these instructions before performing any such task.

The goal of Chicago Pneumatic is to produce tools that help you work safely and efficiently. The most important safety device for this or any tool is YOU. Your care and good judgment are the best protection against injury. All possible hazards cannot be covered here, but we have tried to highlight some of the important ones.

For Additional Safety Information Consult:

- ▲ Your employer, union and/or trade association.
- ▲ US Department of Labor (OSHA); www.osha.gov; Council of the European Communities europe.osha.eu.int
- ▲ "Safety Code for Portable Air Tools" (ANSI B186.1) available from: www.ansi.org
- ▲ "Safety Requirements for Hand-Held Non-Electric Power Tools" available from: European Committee for Standardization, www.cenorm.be

Air Supply And Connection Hazards

- ▲ Air under pressure can cause severe injury.
- ▲ Always shut off air supply, drain hose of air pressure and disconnect tool from air supply when not in use, before changing accessories or when making repairs.
- ▲ Never direct air at yourself or anyone else.
- ▲ Whipping hoses can cause serious injury. Always check for damaged or loose hoses and fittings.
- ▲ Do not use quick disconnect couplings at tool. See instructions for correct setup.
- ▲ Whenever universal twist couplings are used, lock pins must be installed.
- ▲ Do not exceed maximum air pressure of 90 psi/6.2 bar or as stated on tool nameplate.

Projectile Hazards

- ▲ Always wear impact-resistant eye and face protection when involved with or near the operation, repair or maintenance of the tool or changing accessories on the tool.
- ▲ Be sure all others in the area are wearing impact-resistant eye and face protection.
- ▲ Never operate a tool unless the accessory is retained in the tool with a proper retainer (see parts list).
- ▲ To avoid injury, retainer parts must be replaced when they become worn, cracked or distorted.
- ▲ On overhead work, wear a safety helmet.

Operating Hazards

- ▲ To prevent damage to the tool and accessory, accessory must be held firmly against work surface before tool is throttled.
- ▲ Always shut off air supply, relieve hose of air pressure and disconnect tool from air supply when changing accessories.
- ▲ Avoid direct contact with accessory and work surface during and after work as they become heated and sharp.

SAFETY INSTRUCTIONS

- ▲ Wear gloves to protect hands.
- ▲ Operators and maintenance personnel must be physically able to handle the bulk, weight, and power of the tool.
- ▲ Holding the accessory with the free hand can be a source of vibration exposure or injury.

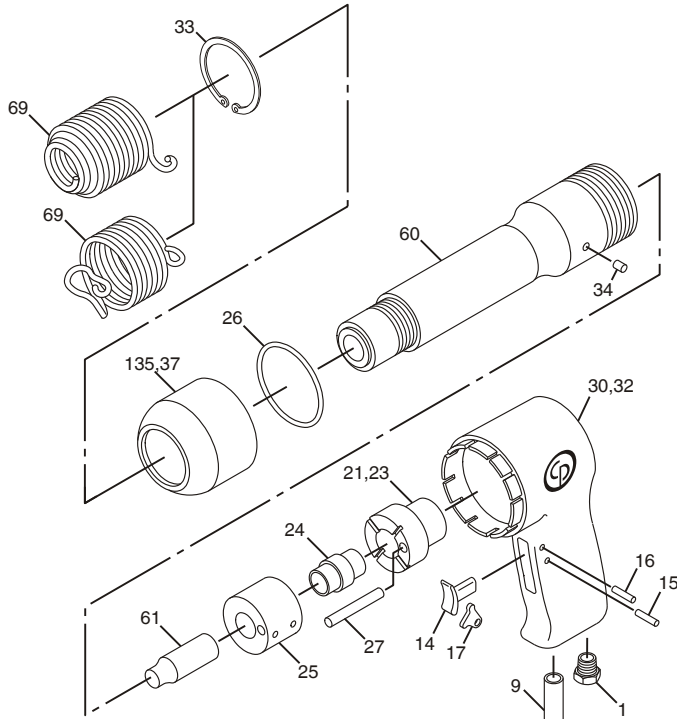
Accessory Hazards

- ▲ Never use any chisel as a hand struck tool. They are specifically designed and heat-treated to be used only in air hammers.
- ▲ Select the correct shank and retainer for the tool being used.
- ▲ Never use dull accessories as they require excessive work pressure and can break from fatigue.
- ▲ Never cool a hot accessory in water. Brittleness and early failure can result.
- ▲ This tool and its accessories must not be modified in any way.
- ▲ Chicago Pneumatic hammers are not intended for use with any accessories that are not listed in the catalog.
- ▲ Accessory breakage or tool damage may result from prying. Take smaller bites to avoid getting struck.

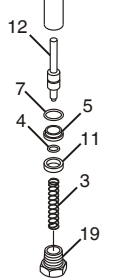
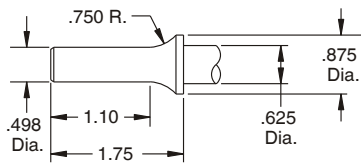
Workplace Hazards

- ▲ Slip/Trip/Fall is a major cause of serious injury or death. Be aware of excess hose left on the walking or work surface.
 - ▲ High sound levels can cause permanent hearing loss. Use hearing protection as recommended by your employer or OSHA regulation (see 29 CFR part 1910).
 - ▲ Maintain a balanced body position and secure footing.
 - ▲ Repetitive work motions, awkward positions and exposure to vibration can be harmful to hands and arms. If numbness, tingling, pain or whitening of the skin occurs, stop using tool and consult a physician.
 - ▲ Avoid inhaling dust or handling debris from the work process which can be harmful to your health. Use dust extraction and wear respiratory protective equipment when working with materials which produce airborne particles.
 - ▲ Proceed with care in unfamiliar surroundings. Hidden hazards may exist, such as electric or other utility lines.
 - ▲ This tool is not intended for use in explosive atmospheres and is not insulated for contact with electric power sources.
 - ▲ Some dust created by power sanding, sawing, grinding, drilling and other construction activities contains chemicals known to the State of California to cause cancer and birth defects or other reproductive harm. Some examples of these chemicals are:
 - Lead from lead based paints
 - Crystalline silica bricks and cement and other masonry products
 - And Arsenic and chromium from chemically-treated rubber
- Your risk from these exposures varies, depending on how often you do this type of work. To reduce your exposure to these chemicals: work in a well ventilated area, and work with approved safety equipment, such as dust masks that are specially designed to filter out microscopic particles.

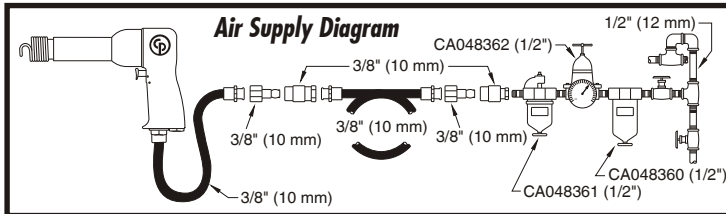
CP717 Air Hammer



CHISEL SHANK DIMENSIONS



Index No.	Part No.	Description	No. Req'd.
1	P073780	Air Inlet Bushing (3/4" to 1/4")	1
3	P002521	Throttle Valve Spring	1
4	C087316	O-Ring (-006)	1
5	A113837	Valve-Throttle	1
7	C069083	O-Ring (-010)	1
9	P074486	Bushing	1
11	A113838	Cup-Spring	1
12	A113836	Stem-Valve	1
14	P071565	Button-Lever Push	1
15	P056138	Valve Lever Stop Pin	1
16	C089798	Roll Pin	1
17	P071564	Throttle Lever	1
19	P074898	Plug	1
21	P077945	Valve Case Assembly (Incl: Index Nos. 23, 24, 25 & 27)	1
23	P073806	Valve Case Lid	1
24	P073804	Valve	1
25	P073805	Valve Case	1
26	P083072	O-Ring (-326)	1
27	C138386	Valve Case Dowel	1
30	P078618	Handle Assembly (Incl: Index Nos. 3, 4, 5, 7, 11, 12, 14, 15, 16, 17, 19, 32)	1
32	P081372	Handle (Incl: Index Nos. 1 & 9)-use P078617	1
33	A083765	Retaining Ring	1
34	P008993	Lock Pin	1
36	P130869	Screen-Exhaust (Not Shown)	1
37	P130868	Deflector-Exhaust (Not Shown)	1
60	P140361	Cylinder-S	1
61	P074493	Piston	1
69	A050282	Retainer-use A047095	1
	A047096	Retainer (Bee Hive Type)	1
	CA085203	Air Regulator (Optional)	1
135	P081369	Exhaust Deflector (Incl: Index Nos. 26, 33, 36 & 37)	1
	CA131376	Decal-Oil Daily(Not Shown)	1
	CA155862	Decal-Warning	1



FOR DETAILED INFORMATION ABOUT CHICAGO PNEUMATIC AIR TOOLS AND EQUIPMENT CONTACT:

HEADQUARTERS LOCATION

UNITED STATES
Chicago Pneumatic Tool Company
Automotive Division
1800 Overview Drive
Rock Hill, SC 29730
Telephone: 1-803-817-7000
1-800-367-2442 (USA only)
Fax: 1-800-228-9096

AUSTRALIA

Atlas Copco Tools Australia
3 Bessemer Street
Blacktown • Australia
Telephone: 02-621-9482
Fax: 02-671-5915

BELGIQUE

Chicago Pneumatic Rep. Office
Avenue Sluysmans 10-4030
Liege • Belgium
Tel/Fax: 04-343 8150

BRASIL

Chicago Pneumatic Brasil
Av. Mascote 159 V. Sta. Catarina
04363-000
Sao Paulo/SP • Brasil
Telefone: (011) 562-7314
Fax: (011) 563-9208

CANADA

Chicago Pneumatic Tool Co.
Automotive Division
1800 Overview Drive
Rock Hill, SC 29730
Telephone: 1-803-817-7000
Fax: 1-800-228-9096

CENTRAL AMERICA

Contact Chicago Pneumatic/USA for names of CP Authorized Distributors in this area

GERMANY

Desoutter GmbH
Paul-Friedlander-Str
65203 Wiesbaden • Germany
Telephone: 49-0611-270120/22
FAX: 49-0611-270140

INDIA

Consolidated Pneumatic Tool Company (India) Ltd.
301/302, L.B. Shastri Marg
P.O. Box 7761
Mulund, Bombay 400 080 • India
Phone: 91-22-564-0011
Fax: 91-22-564-7687
Telex: 1171990 CPT I N

ITALY

Desoutter Italiana S.R.L.
Viale Della Repubblica, 65
20035 Lisson (Milano)

MEXICO

Chicago Pneumatic Tool Company Mexico
San Francisco #223
Valle Dorado, Tlalnepantla
C.P. 54020 • Mexico
Telephone: 525-378-0754
FAX: 525-378-0753

SOUTH AFRICA

Chicago Pneumatic Tool Company, S.A.
20 Anvil Road
PO Box 105
Isando 1600, Transvaal
South Africa
Phone: 011-9746761
Fax: 011-974-2324

SOUTH AMERICA

Contact Chicago Pneumatic/USA for names of CP Authorized Distributors in this area

SOUTHEAST ASIA

Chicago Pneumatic Tool Company Regional Office
P.O. Box 1516
Unit 2103 - Citimark
28 Yuen Shun Circuit
Shatin
New Territories, Hong Kong
Telephone: (852) 3570963
FAX: 852-763-1875

SWEDEN

Chicago Pneumatic Distributor Markets
Sickla Industriväg 7
S-131 34 Nacka • Sweden
Telephone: 46 8743 9329
Fax: 46-8743 9427

UNITED KINGDOM

Chicago Pneumatic Tool Company, Ltd.
P.O. Box 241
Eaton Road
Hemel Hempstead, Herts HP2 7DR
England
Domestic: 01442-847703/06
Export: 01442-232420/17
FAX: 01442-2847723

Visit our website:
<http://www.chicagopneumatic.com>