

Installation and Operation Manual Wireless Monitor Kit

Questions?

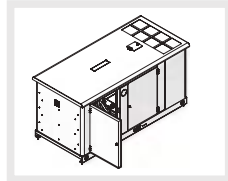
Help is just a moment away!

Call: Technical Services 800-743-4115

Monday-Friday 8:00 AM to 5:00 PM Central Time



Pages 2-5 and 10-12
Option 1 and Option 2



Pages 2 and 7-12
Option 1 and Option 2

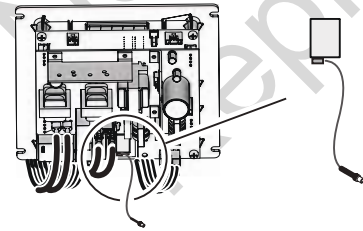
Option 1



Two fresh AA 1.5V batteries are required. Batteries not included.

Note: Grommet is not used on every assembly.

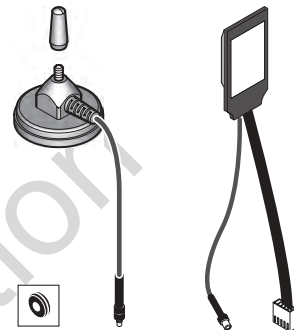
Control Panel is equipped with an ON BOARD RADIO.



Option 2

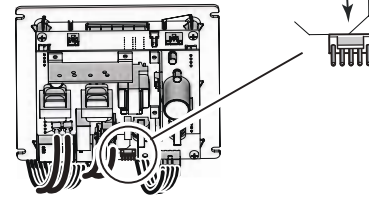


Two fresh AA 1.5V batteries are required. Batteries not included.



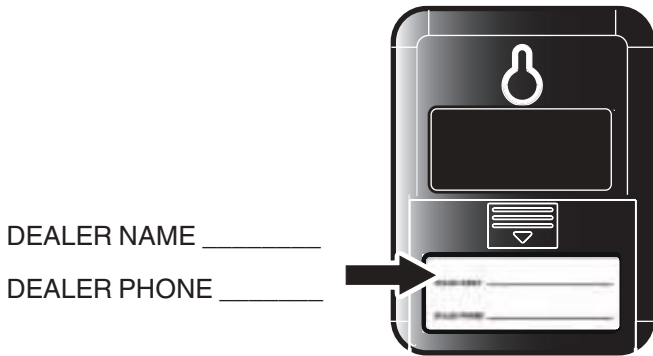
Note: Grommet is not used on every assembly.

OFF BOARD RADIO to be installed on Control Panel.





Thank you for purchasing this standby generator accessory. When installed in accordance with the instructions that follow, this Wireless Monitor Kit will provide years of dependable service. After installation keep your purchase receipt and this Installation Instructions with your generator operator's manual.

Record the dealer name and phone number on the monitor label.



Safety

The safety alert symbol  is used to identify safety information about hazards that can result in personal injury. A signal word (**DANGER**, **WARNING**, or **CAUTION**) is used with the alert symbol to indicate the likelihood and the potential severity of injury. In addition, a hazard symbol may be used to represent the type of hazard. 

DANGER indicates a hazard which, if not avoided, will result in death or serious injury.

WARNING indicates a hazard which, if not avoided, could result in death or serious injury.

CAUTION indicates a hazard which, if not avoided, could result in minor or moderate injury.

NOTICE: indicates a situation that could result in damage to the product.

WARNING

Failure to read and follow the safety warnings and instructions in this document and in the operator's manual could result in death, serious injury, and/or property damage.

The warnings and instructions must be read, understood, and followed when setting-up, operating, servicing, transporting, or storing the unit.

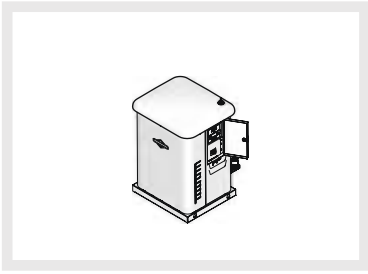
WARNING

Certain components in this product and related accessories contain chemicals known to the State of California to cause cancer, birth defects, or other reproductive harm. Wash hands after handling.



This device complies with part 15 of the FCC Rules. Operation is subject to the following two conditions: (1) This device may not cause harmful interference, and (2) this device must accept any interference received, including interference that may cause undesired operation.

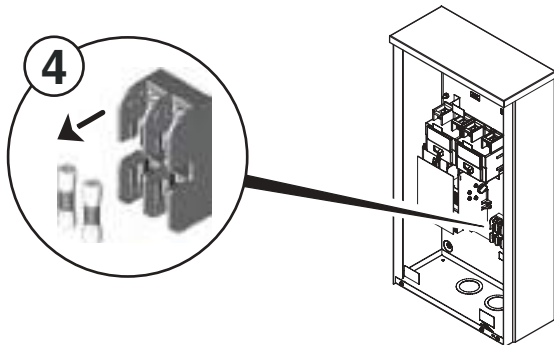
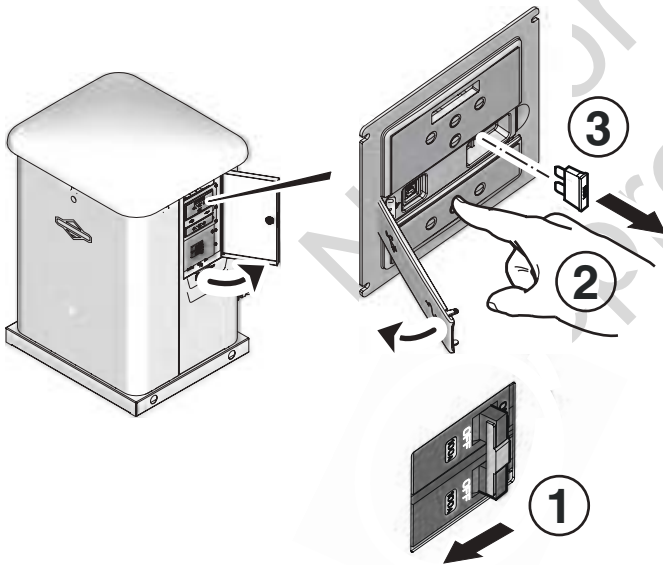
Only current licensed electrical professionals should attempt installation of this accessory. Installation must strictly comply with all applicable codes, industry standards and regulations.



Preparation

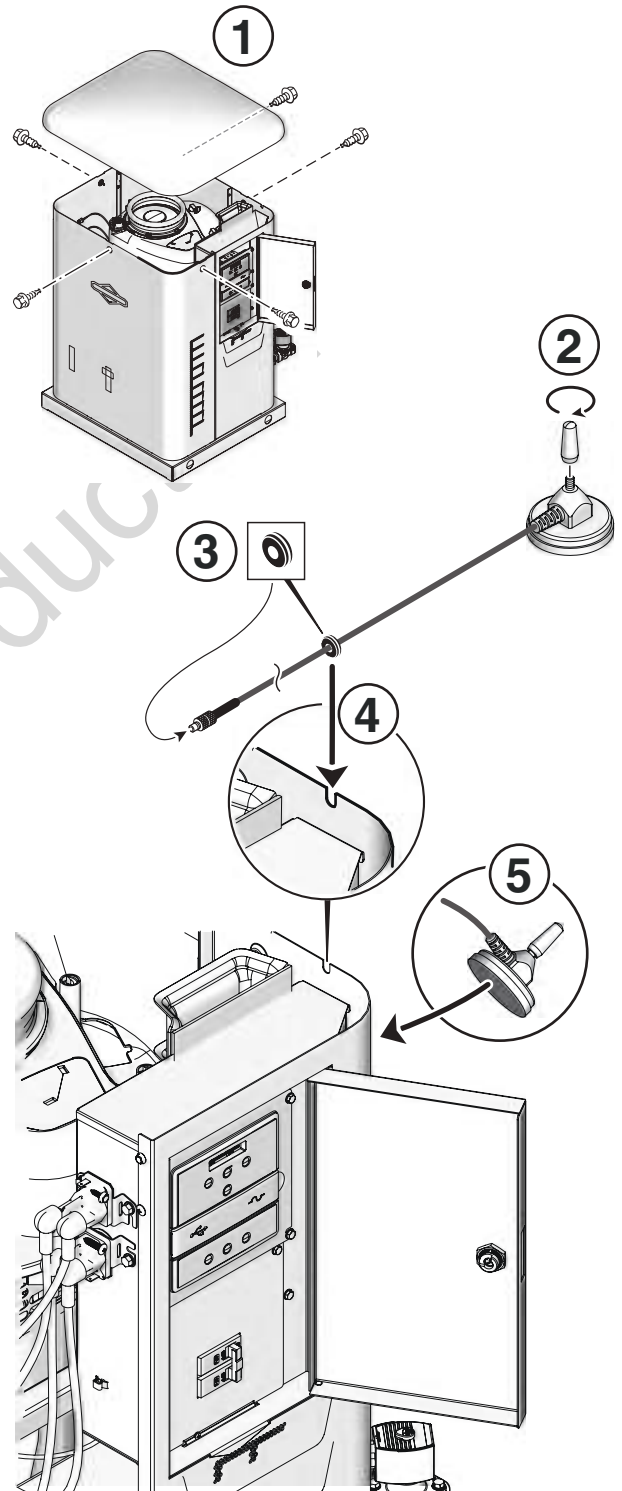
Before performing any generator maintenance, always perform the following steps:

- ① Set the generator's circuit breaker to its **OFF** position.
- ② Press and hold the control panel **OFF** button.
- ③ Remove 15 Amp fuse from control panel.
- ④ **Utility voltage is present at generator control panel.** Disconnect power before servicing control panel by removing the fuses from the transfer switch.



Installation

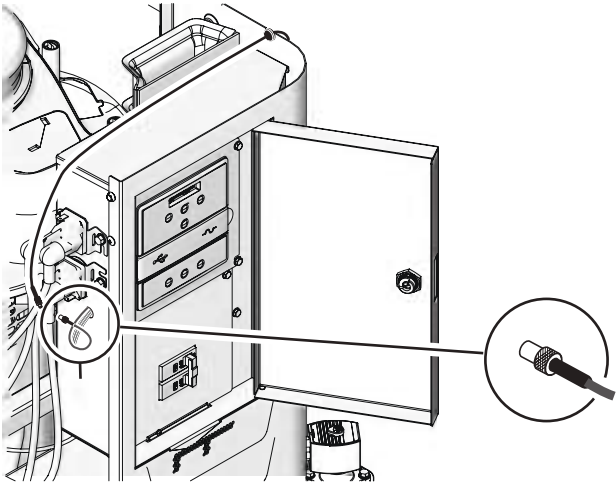
- ① Remove the five screws and roof.
- ② Assemble antenna piece to base.
- ③ Install grommet on antenna wire.
- ④ Insert grommet and wire into slot on rear panel.
- ⑤ Attach antenna (temporarily) onto the back panel.



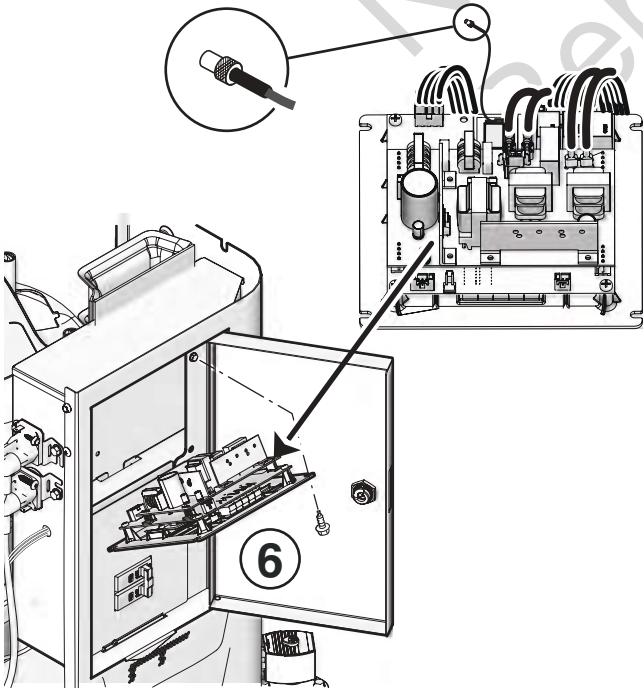
Option 1

Control Panel is equipped with an ON BOARD RADIO.

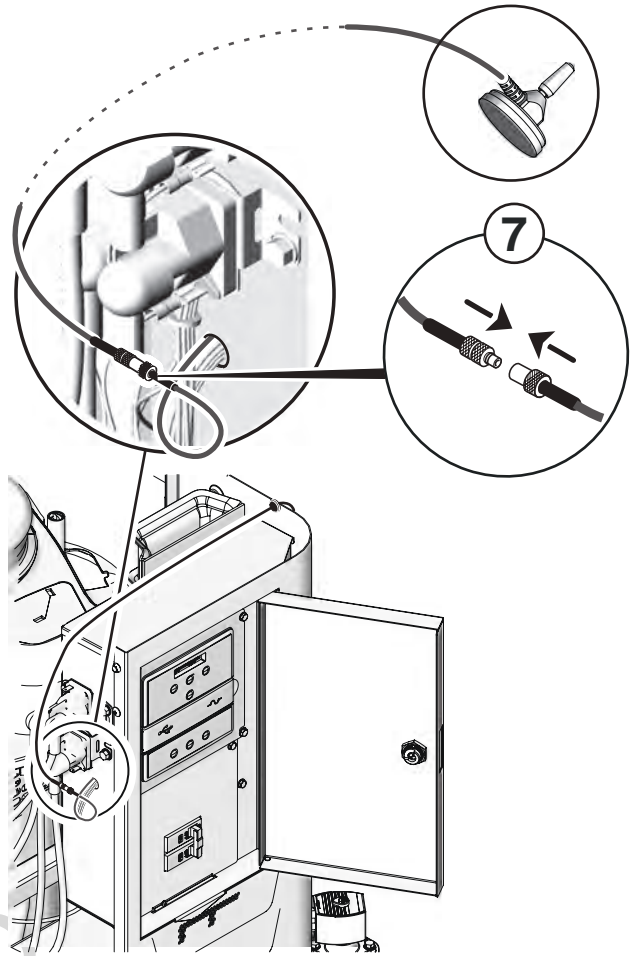
A wire connection is available at the inside cabinet electrical harness hole.



6 If the wire connection cannot be found, locate by removing the four screws used to attach the control panel.

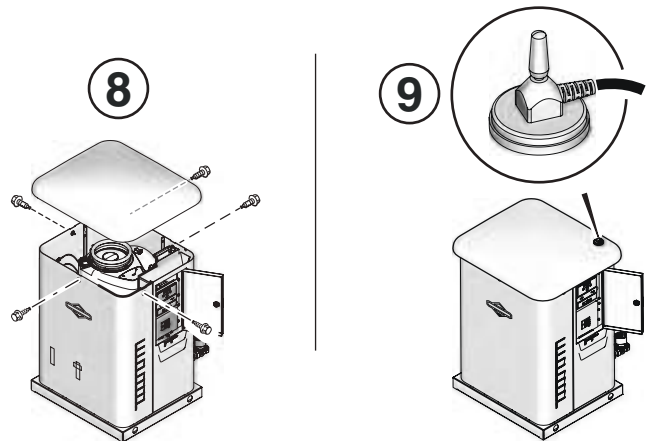


7 Insert the antenna wire to the ON BOARD RADIO wire until it clicks. Route wire away from sharp objects and secure with ties.



8 Reinstall the roof.

9 Mount the antenna to the top of the roof.



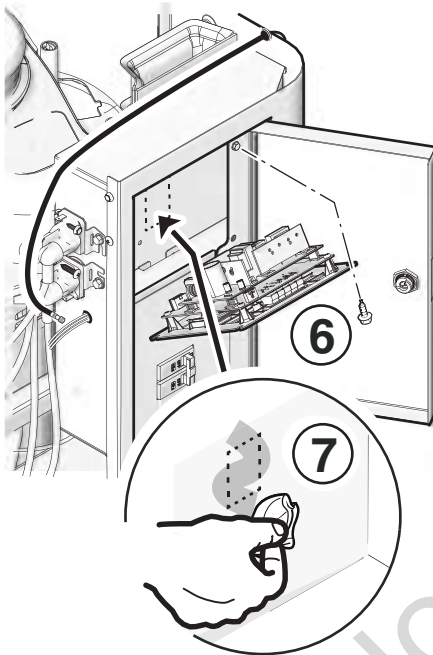
After installation has been completed, replace fuses in transfer switch, replace 15 Amp fuse in control panel, and set generator circuit breaker to its ON position.

Go to: **LINK MONITOR WITH GENERATOR.**

Option 2

OFF BOARD RADIO to be installed.

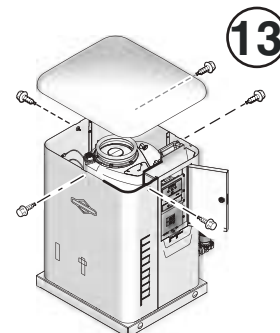
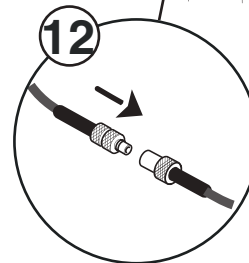
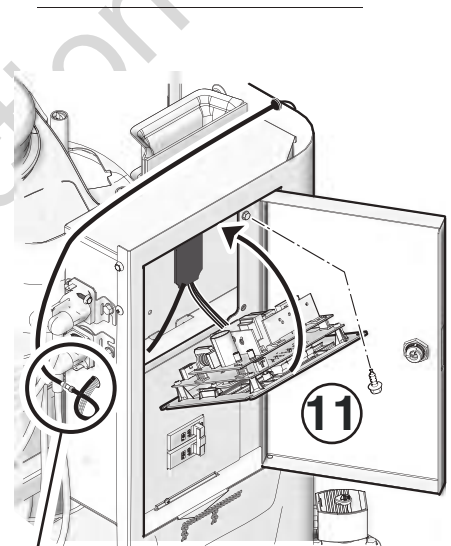
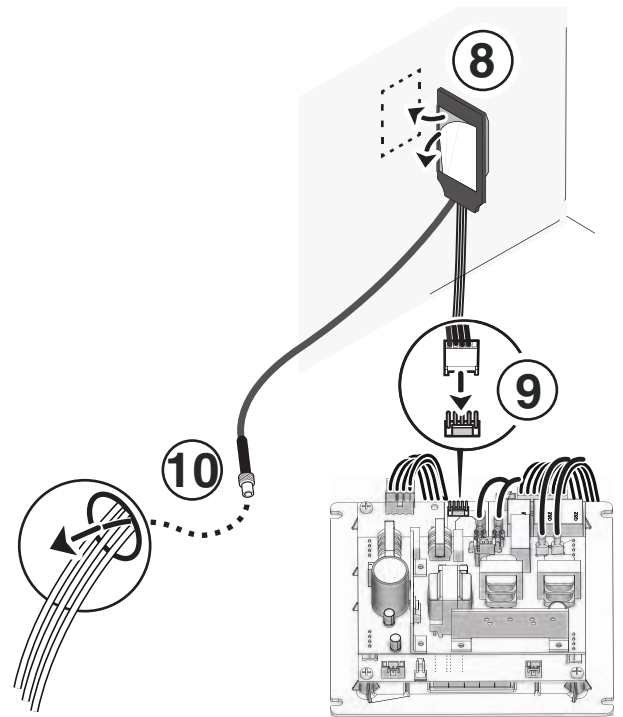
- ⑥ Remove screws on control panel and tilt panel forward.
- ⑦ Prepare the OFF BOARD RADIO mounting surface by cleaning with an alcohol wipe or other cleaning solution. Make sure surface is dry before proceeding to Step 8.

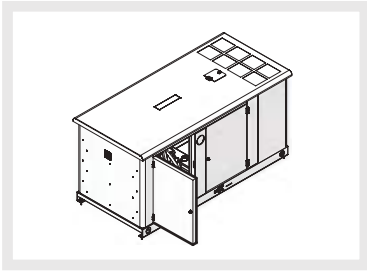


- ⑧ Remove RED plastic from adhesive on OFF BOARD RADIO. Attach radio to inside wall under control panel. Press down firmly.
- ⑨ Plug connector into control panel as shown.
- ⑩ Insert wire for antenna through side panel harness hole.
- ⑪ Reinstall control panel and tighten screws securely.
- ⑫ Insert antenna wire to the OFF BOARD RADIO wire until it clicks. Route wire away from sharp objects and wire tie
- ⑬ Reinstall the roof.
- ⑭ Mount the antenna to the top of the roof.

After installation has been completed, replace fuses in transfer switch, replace 15 Amp fuse in control panel, and set generator circuit breaker to its ON position.

Go to: **LINK MONITOR WITH GENERATOR.**

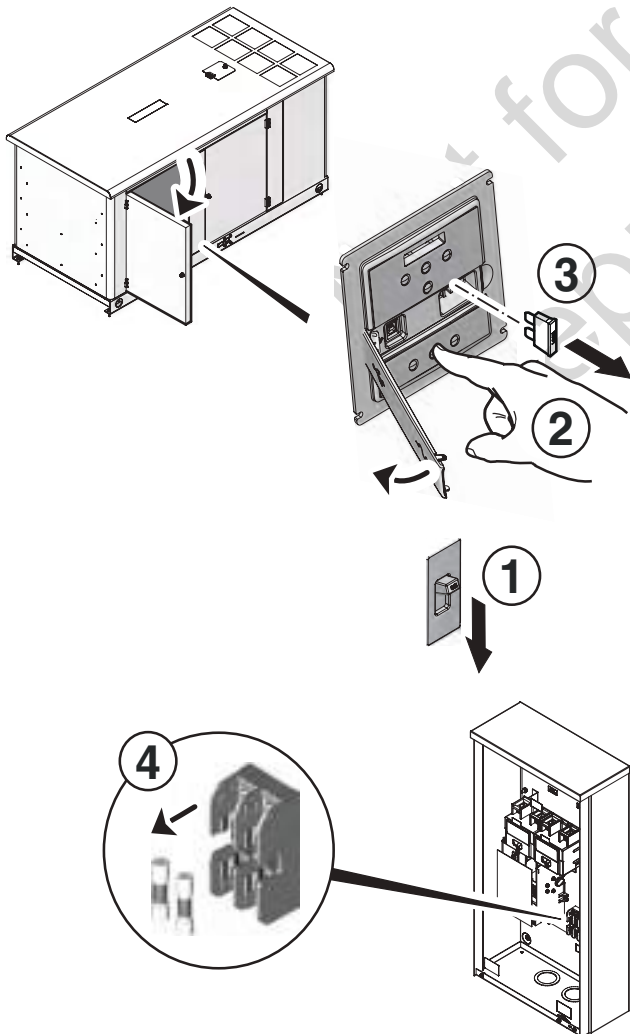




Preparation

Before performing any generator maintenance, always perform the following steps:

- ① Set the generator's circuit breaker to its **OFF** position.
- ② Press and hold the control panel **OFF** button.
- ③ Remove 15 Amp fuse from control panel.
- ④ **Utility voltage is present at generator control panel.** Disconnect power before servicing control panel by removing the fuses from the transfer switch.



Installation

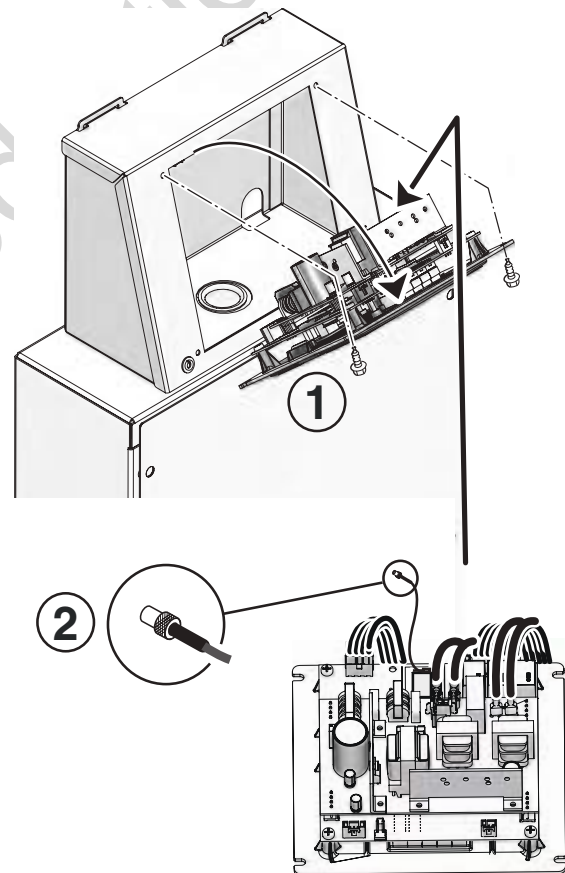
Option 1

Control Panel is equipped with an **ON BOARD RADIO**

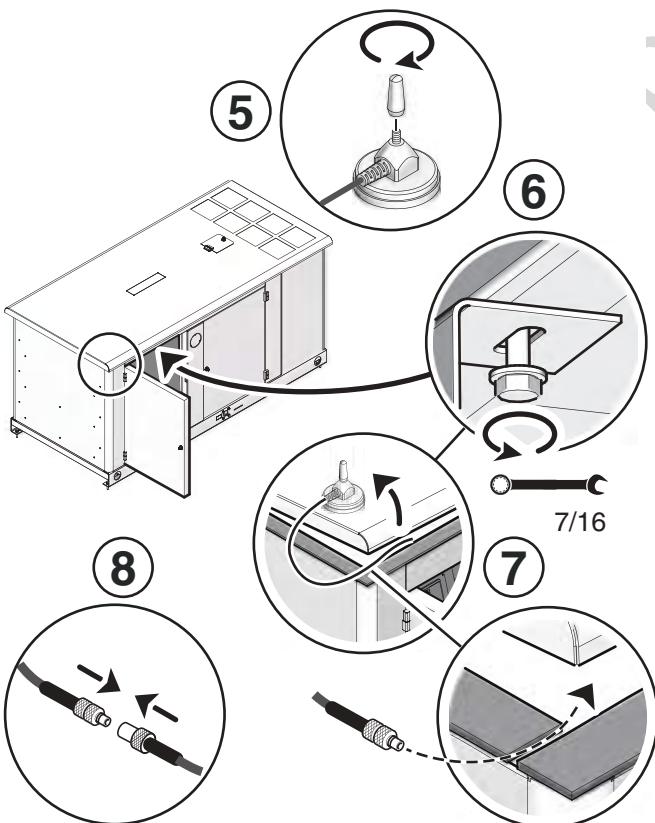
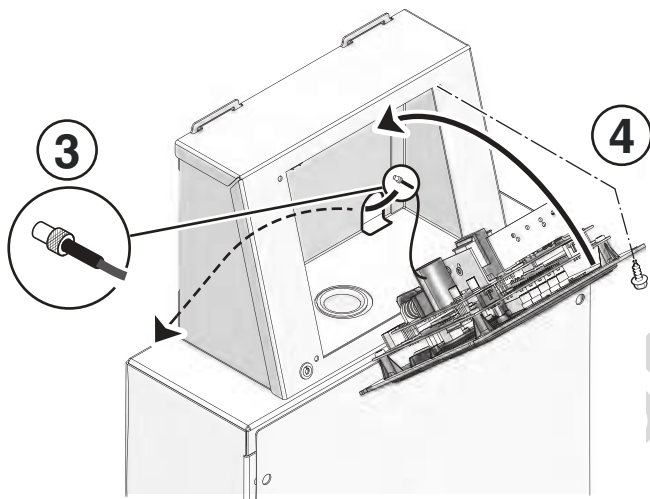
Kit parts required:



- ① Remove the four screws attaching the control panel.
- ② Locate the ON BOARD RADIO wire connection.



- ③ Insert the antenna wire through inside cabinet hole and around the backside as shown.
- ④ Fasten the four screws attaching the control panel
- ⑤ Assemble antenna piece to base.
- ⑥ Loosen inside roof bolt in corner.
- ⑦ Mount the antenna to the top of the roof. While lifting roof in corner, lay antenna wire in space between rubber gaskets.
- ⑧ Insert antenna wire to the ON BOARD RADIO wire until it clicks. Route wire away from sharp objects and wire tie.
- ⑨ Tighten roof bolt (6) securely.



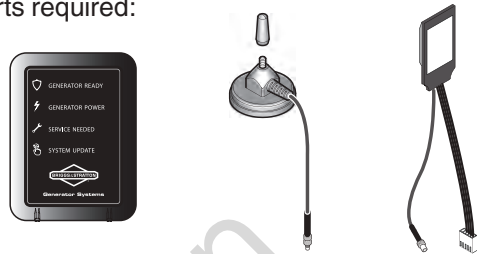
After installation has been completed, replace fuses in transfer switch, replace 15 Amp fuse in control panel, and set generator circuit breaker to its ON position.

Go to: **LINK MONITOR WITH GENERATOR.**

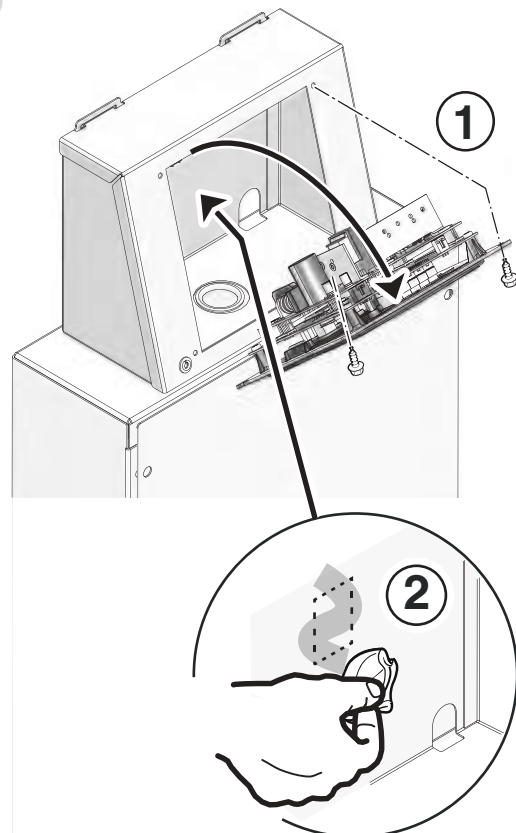
Option 2

OFF BOARD RADIO to be installed.

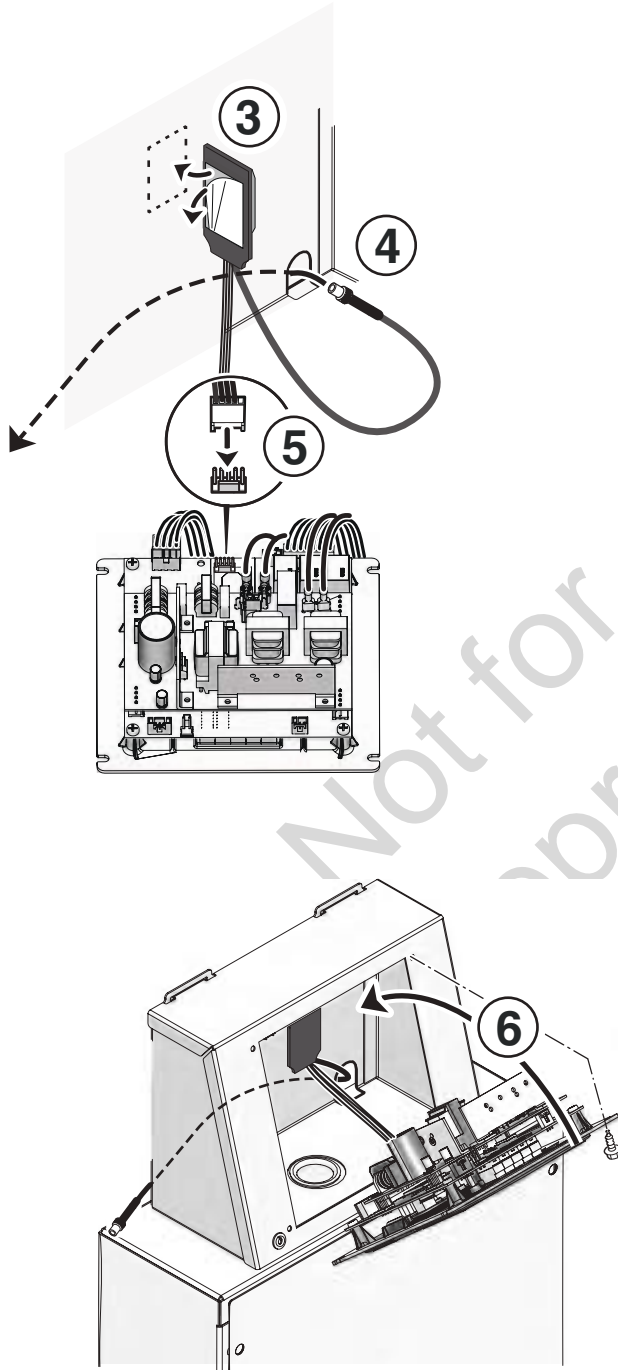
Kit parts required:



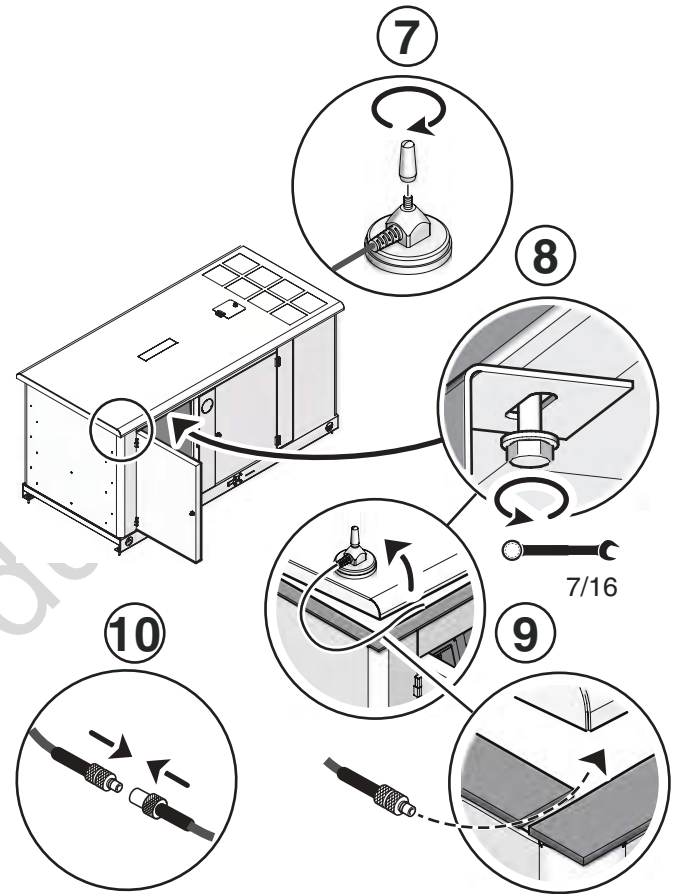
- ① Remove the four screws attaching the control panel.
- ② Prepare the mounting surface by cleaning with an alcohol wipe or other cleaning solution. Make sure surface is dry before proceeding to Step 3.



- ③ Remove RED plastic from adhesive on OFF BOARD RADIO. Attach radio to inside wall under control panel. Press down firmly.
- ④ Insert the antenna wire through inside cabinet hole and around the backside as shown.
- ⑤ Plug connector into control panel as shown.
- ⑥ Fasten the four screws attaching the control panel.



- ⑦ Assemble antenna piece to base.
- ⑧ Loosen inside roof bolt in corner.
- ⑨ Mount the antenna to the top of the roof. While lifting roof in corner, lay antenna wire in space between rubber gaskets.
- ⑩ Insert antenna wire to the OFF BOARD RADIO wire until it clicks. Route wire away from sharp objects and wire tie.
- ⑪ Tighten roof bolt (8) securely.



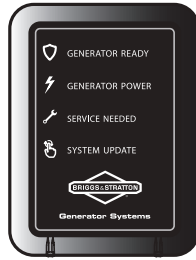
After installation has been completed, replace fuses in transfer switch, replace 15 Amp fuse in control panel, and set generator circuit breaker to its ON position.

Go to: **LINK MONITOR WITH GENERATOR.**

Link Monitor with Generator

The REMOTE WIRELESS MONITOR

- Is for indoor use ONLY.
- Communicates with the generator control panel.
- Has a range of up to 200 feet line of sight.



COLOR / ICON

green

GENERATOR READY

green

GENERATOR POWER

red

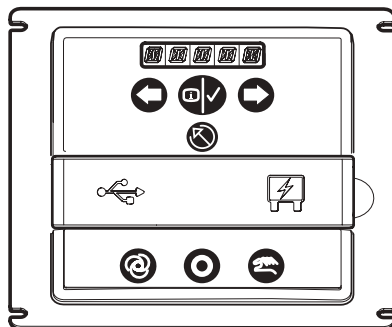
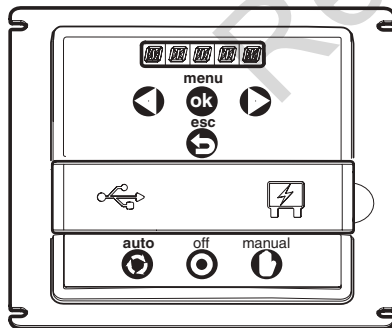
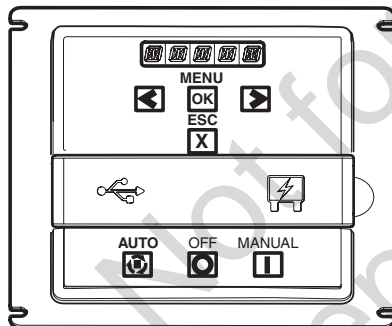
SERVICE NEEDED

BUTTON

SYSTEM UPDATE

GENERATOR CONTROL PANEL

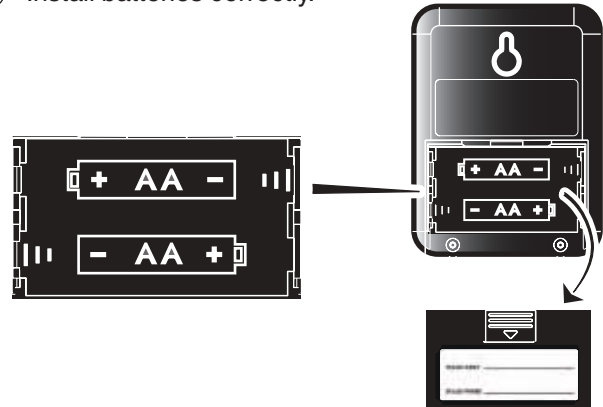
Three different styles, same button function.



- 1 Press AUTO mode.



- 2 Install batteries correctly.



GENERATOR READY will light for 5 seconds while the monitor starts up.

- 3 Press and hold together for about **5 seconds** the MENU and ESCAPE buttons.

- "LINKING MODE" will scroll across the digital readout display.



- 4 Press and hold for **10 seconds** the system update BUTTON on the monitor.

- All three icons should turn ON solid after 10 seconds.
- Once link has been made - all icons turn OFF.
- **If link has been unsuccessful** the wrench icon - flashes 4 seconds ON, 4 seconds OFF. Repeat Steps 3 and 4.

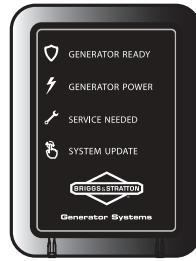


- 5 **Important:** Once the link has been made (all icons turn OFF), press the OK button.




NOTE: It may take up to 1 minute for the monitor to begin displaying the generator status correctly.


Monitor/Generator Status Codes



COLOR / ICON

green 

GENERATOR READY

green 

GENERATOR POWER

red 

SERVICE NEEDED


BUTTON 


SYSTEM UPDATE


Generator Status

The wireless monitor receives data from the generator every 10 minutes and displays the generator status through 3 status icons

Pressing the **SYSTEM UPDATE** button will provide current **Generator Status** by flashing the status icons. When pressed, all 3 icons will flash until the generator status is received.

 **GENERATOR READY** - When active, the shield icon will flash green once every 7 seconds. The green shield icon indicates that the generator is in AUTO mode and that it is ready to run in the event of a loss of utility power.

 **GENERATOR POWER** - When active, the power icon will flash green every 7 seconds. The green power icon indicates that the generator is supplying power.

 **SERVICE NEEDED** - When the wrench icon flashes red, refer to the service codes on the back of the monitor or to the troubleshooting guide in the generator manual. Call the nearest authorized service dealer if problem cannot be fixed.

Icon Lighting Codes

- **No status icons illuminated** - Generator in OFF mode or check and replace batteries.
- **Batteries Inserted** - the shield icon will light for 5 seconds.

- **Wireless Communication Lost** - the wrench icon will flash 20 fast pulses, then pause for 5 seconds, and repeat the sequence until communication has been restored. Communication lost issues can typically be resolved by moving the wireless monitor closer, within the home, to the standby generator. See **Optional Router Accessory Kit**
- **Linking Error or Not Linked** - the wrench icon will light red for 4 seconds, pause for 4 seconds, and repeat the sequence until a successful link is completed.
- **During the weekly exercise cycle**, the generator will run for 20 minutes, but it will not supply power to the home. During the exercise cycle, the monitor will continue blinking the green shield icon.

Service Code Descriptions - name and number of flashes are listed on the back side of the wireless monitor.



# of flashes	service needed
1	low battery voltage
2	low fluid level
3	under/over voltage
4	engine does not start
5	low frequency
6	engine overspeed
7	high temperature
8	transfer switch

part #: 316197 fcc id: MCQ-XBS2C IC id: 1846A-XBS2C

None of the **service needed codes** are cleared at the wireless monitor. All alerts must be cleared at the generator control panel.

Optional Router Accessory Kit

The monitor has a line of sight range of up to 200 feet, but this distance will decrease if the signal has to pass through walls or other objects.

If upon installation and setup of the wireless monitor system communication is not reliable, Optional Router Accessory Kit may be needed. See Authorized Dealer for more information.

The router is a small extender that can be used to expand the range of a generator wireless network so that network devices can seamlessly communicate with one another.

The router can be plugged into any standard 110VAC outlet within the home.

LIMITED WARRANTY

Briggs & Stratton warrants that, during the warranty period specified below, it will repair or replace, free of charge, any part that is defective in material or workmanship or both. Transportation charges on product submitted for repair or replacement under this warranty must be borne by purchaser. This warranty is effective for and is subject to the time periods and conditions stated below. For warranty service, find the nearest Authorized Service Dealer in our dealer locator map at www.briggsandstratton.com. The purchaser must contact the Authorized Service Dealer, and then make the product available to the Authorized Service Dealer for inspection and testing.

There is no other express warranty. Implied warranties, including those of merchantability and fitness for a particular purpose, are limited to the warranty period listed below, or to the extent permitted by law. Liability for incidental or consequential damages are excluded to the extent exclusion is permitted by law. Some states or countries do not allow limitations on how long an implied warranty lasts, and some states or countries do not allow the exclusion or limitation of incidental or consequential damages, so the above limitation and exclusion may not apply to you. This warranty gives you specific legal rights and you may also have other rights which vary from state to state or country to country.**

WARRANTY PERIOD

Item	Consumer Use	Commercial Use
Accessory/Attachment/Equipment	12 months	None

** In Australia - Our goods come with guarantees that cannot be excluded under the Australian Consumer Law. You are entitled to a replacement or refund for a major failure and for compensation for any other reasonably foreseeable loss or damage. You are also entitled to have the goods repaired or replaced if the goods fail to be of acceptable quality and the failure does not amount to a major failure. For warranty service, find the nearest Authorized Service Dealer in our dealer locator map at BRIGGSandSTRATTON.COM, or by calling 1300 274 447, or by emailing or writing to salesenquires@briggsandstratton.com.au, Briggs & Stratton Australia Pty Ltd, 1 Moorebank Avenue, NSW, Australia, 2170.

The warranty period begins on the date of purchase by the first retail or commercial consumer. "Consumer use" means personal residential household use by a retail consumer. "Commercial use" means all other uses, including use for commercial, income producing or rental purposes. Once a product has experienced commercial use, it shall thereafter be considered as a commercial use product for purposes of this warranty.

To ensure prompt and complete warranty coverage, register your product at the website shown above or at www.onlineproductregistration.com, or mail the completed registration card (if provided), or call 1-800-743-4115 (in USA).

Save your proof of purchase receipt. If you do not provide proof of the initial purchase date at the time warranty service is requested, the manufacturing date of the product will be used to determine the warranty period. Product registration is not required to obtain warranty service on Briggs & Stratton products.

ABOUT YOUR WARRANTY

This warranty covers only defects in materials or workmanship. It does not cover damage caused by improper use or abuse, improper maintenance or repair, or normal wear and tear.

Improper Use and Abuse - The proper, intended use of this product is described in the Operator's Manual. Using the product in a way not described in the Operator's Manual or using the product after it has been damaged will not be covered under this warranty. Warranty coverage will also not be provided if the serial number on the product has been removed or the product has been altered or modified in any way, or if the product has evidence of abuse such as impact damage or water/chemical corrosion damage.

Improper Maintenance or Repair - This product must be maintained according to the procedures and schedules provided in the Operator's Manual, and serviced or repaired using genuine Briggs & Stratton parts or equivalent. Damage caused by lack of maintenance or use of non-original parts is not covered by warranty.

Normal Wear and Tear - Like most mechanical devices, your unit is subject to wear even when properly maintained. This warranty does not cover repairs when normal use has exhausted the life of a part or the equipment. Maintenance and wear items such as filters, belts, cutting blades, and brake pads (except engine brake pads) are not covered by warranty due to wear characteristics alone, unless the cause is due to defects in material or workmanship.

Other Exclusions - This warranty excludes damage due to accident, abuse, modifications, alterations, improper servicing, freezing or chemical deterioration. Attachments or accessories that were not originally packaged with the product are also excluded. This warranty does not include used, reconditioned, second-hand, or demonstration equipment or engines. This warranty also excludes failures due to acts of God and other force majeure events beyond the manufacturer's control.