



# STAND FOR LOG SPLITTER



**MODEL NO.  
FT-5**

## **Owner's Manual**

### **ASSEMBLY & OPERATING INSTRUCTIONS**

Purchase Date \_\_\_\_\_ Dealer \_\_\_\_\_

**Boss Industrial, Inc.** • 123 Ambassador Drive, Suite 123 • Naperville, IL 60540 • USA  
Phone: (800) 780-BOSS (2677) • Fax (331) 472-2976

[www.boss-industrial.com](http://www.boss-industrial.com)

## To The Owner

Thank You!

Thank you for purchasing a BOSS Log Splitter Stand. Please read this entire manual prior to assembling and moving around.

This stand is only intended for the log splitter from the same manufacturer. FT-5 is available for BOSS INDUSTRIAL 7 ton log splitter ES7T20.

Let's start to set up the stand with your log splitter!

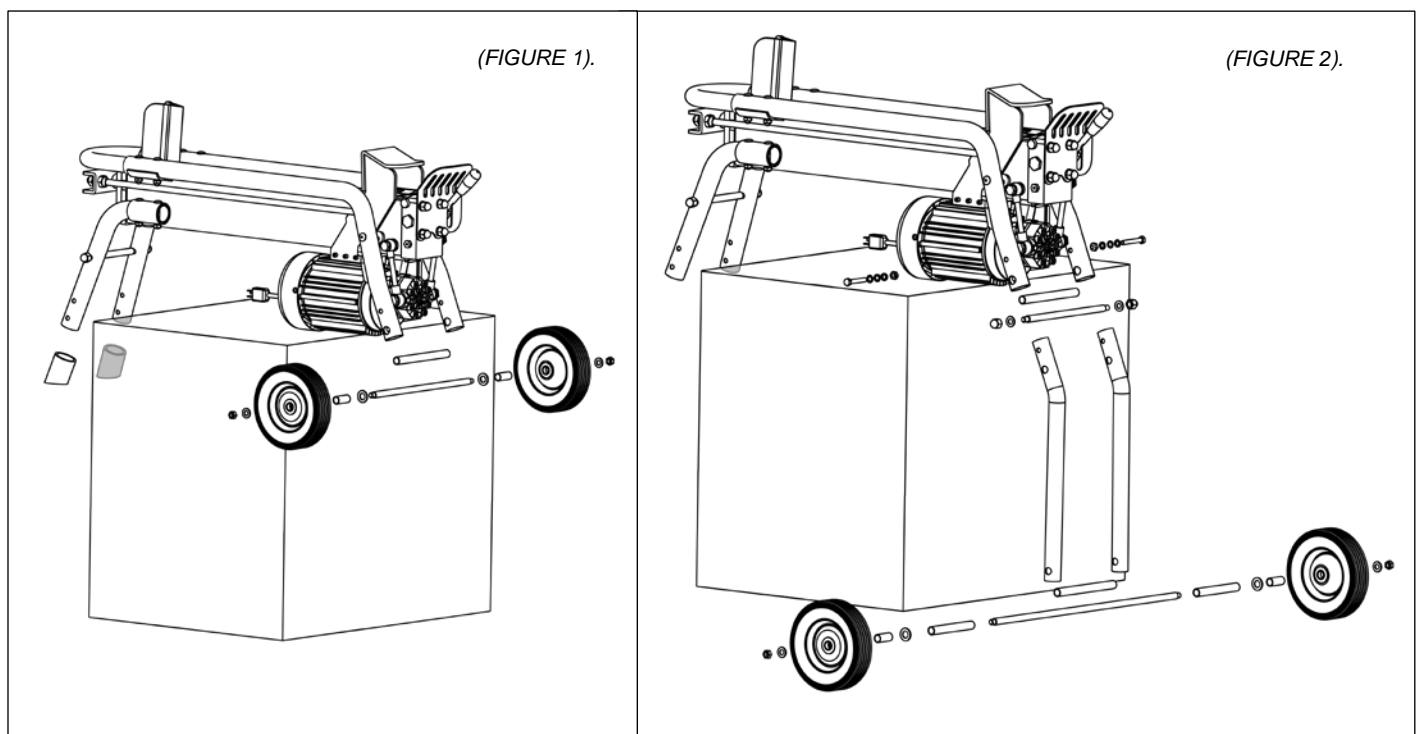
**NOTE:** Due to the weight / size of the log splitter, it's recommended that two or more adults be present to assist with the assembling.

**STEP 1:** Carefully remove all parts from the box. Make sure that all items listed in the packing list are included. If any parts are damaged or missing, please call 1-800-780-2677 for assistance.

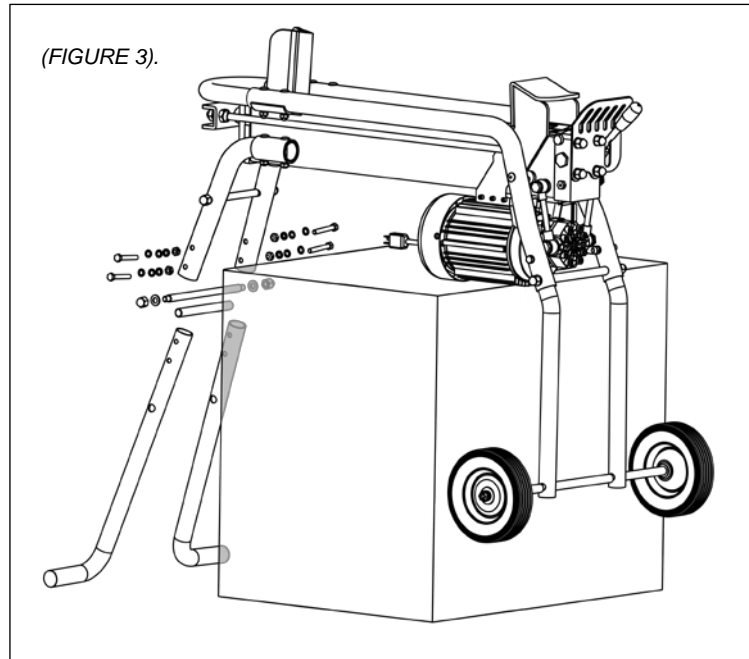
**STEP 2:** Set your log splitter on a level workbench carefully. Remove both rubber bumpers from front legs, and wheel / wheel axel assemblies from wheel frame. See *FIGURE 1*

**STEP 3:** Insert the two wheel stands into wheel frame, assemble the wheel axel and bushing just removed from the log splitter, then secure with the hardware in the package. See *FIGURE 2*

**STEP 4:** Assemble the long wheel axel and bushings in the package, and put on the wheel assemblies just removed from your log splitter, then tighten. See *FIGURE 2*



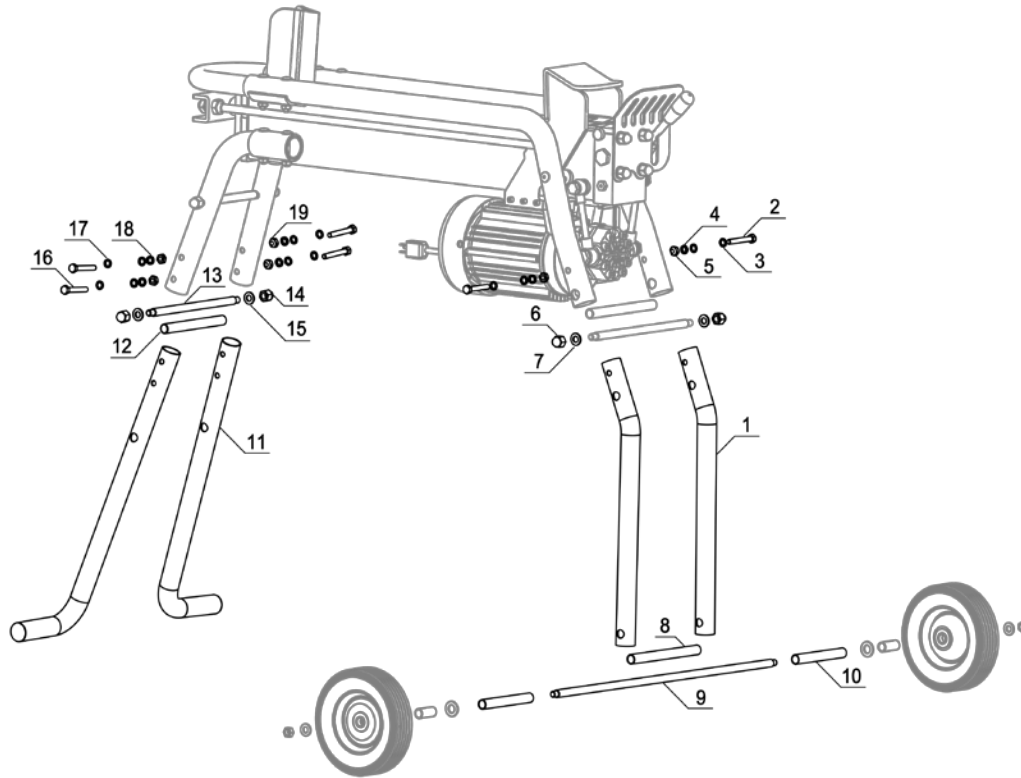
**STEP 5:** Attach the two front stands and the support bar assembly into the front legs of your splitter. See *FIGURE 3*



**NOTE:**

- Check all bolts and nuts are tight to be sure the stand is in safe working condition.
- Be extra cautious when moving the log splitter mounted on the stand on rugged and rough terrain.
- During operation, ensure not stumbled. Safe footing is essential in preventing accidents.

## Exploded Diagram & Packing List



REF #	PART #	PART NAME	SPECIFICATIONS	QTY PER SECTION
1	340-098	Wheel stand		2
2	710-690	Hex head bolt	Zinc, M8*55	2
3	750-638	Flat Washer	Zinc, M8*1	4
4	750-834	Spring Washer	Zinc, M8*2.5	2
5	720-135	Nut	Zinc, M8	2
6	720-678	Snap Head Nut	Zinc, M10	2
7	750-525	Flat Washer	Zinc, M10*1.5	2
8	340-256	Long Axel Center Bushing		1
9	340-084	Long Wheel Axel		1
10	340-252	Long Axel Side Bushing		1
11	320-828	Front Stand		2
12	320-612	Support Bar Bushing	Ø16*1.2*140	1
13	320-675	Support Bar	Ø12.7*222	1
14	720-678	Snap Head Nut	Zinc, M10	2
15	750-525	Flat Washer	Zinc, M10*1.5	2
16	710-690	Hex head bolt	Zinc, M8*55	4
17	750-638	Flat Washer	Zinc, M8*1	8
18	750-834	Spring Washer	Zinc, M8*2.5	4
19	720-135	Nut	Zinc, M8	4