



STAND FOR LOG SPLITTER



**MODEL NO.
FT-3**

Owner's Manual

ASSEMBLY & OPERATING INSTRUCTIONS

Purchase Date _____ Dealer _____

Boss Industrial, Inc. • 123 Ambassador Drive, Suite 123 • Naperville, IL 60540 • USA
Phone: (800) 780-BOSS (2677) • Fax (331) 472-2976

www.boss-industrial.com

To The Owner

Thank You!

Thank you for purchasing a BOSS Log Splitter Stand. Please read this entire manual prior to assembling and moving around.

This stand is only intended for the log splitter from the same manufacturer. FT-3 is available for BOSS INDUSTRIAL 5 ton log splitter EC5T20.

Let's start to set up the stand with your log splitter!

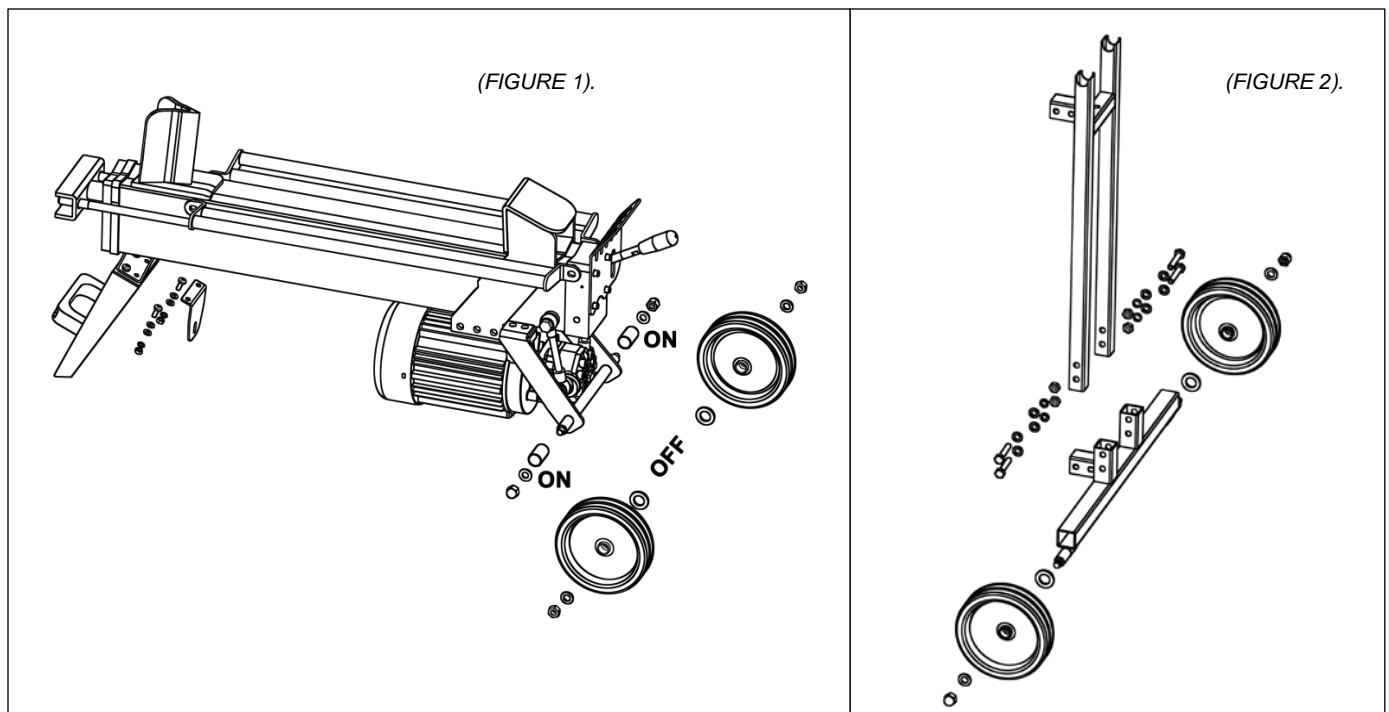
NOTE: Due to the weight / size of the log splitter, it's recommended that two or more adults be present to assist with the assembling.

STEP 1: Carefully remove all parts from the box. Make sure that all items listed in the packing list are included. If any parts are damaged or missing, please call 1-800-780-2677 for assistance.

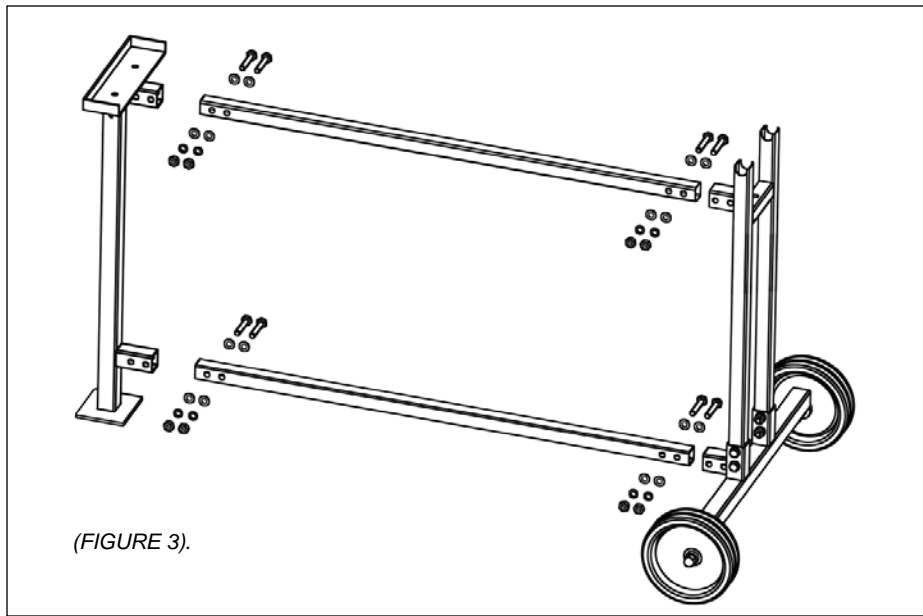
STEP 2: Remove wheel assemblies of your log splitter from the wheel frame. Then put on the axel side bushings and snap head bolts in your stand package. See *FIGURE 1*

STEP 3: Screw off the two back bolts in the front leg bracket, insert the front hook connecting plate in your stand package, then remount the two bolts just removed. See *FIGURE 1*

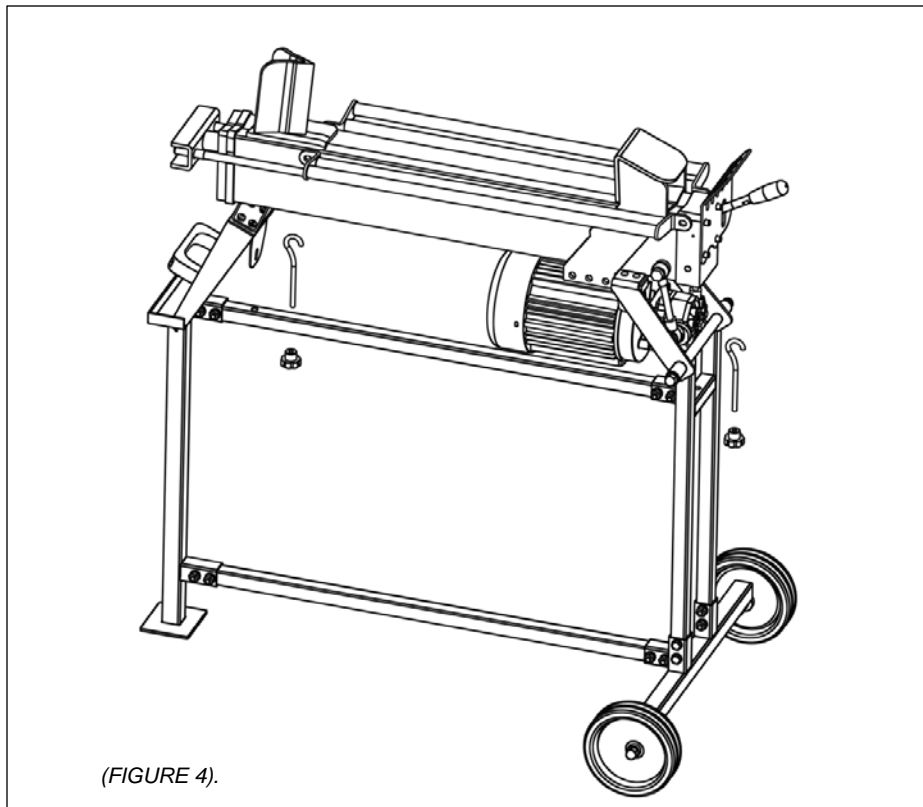
STEP 4: Assemble the wheel assemblies just removed onto the wheel frame axel in your stand package. Then insert the wheel frame stand into the brackets on the frame axel, screw on the hardware in your package, and tighten. See *FIGURE 2*



STEP 5: Attach the two beams to the brackets on wheel frames and front frame, screw on the hardware in your stand package, and tighten. See *FIGURE 3*



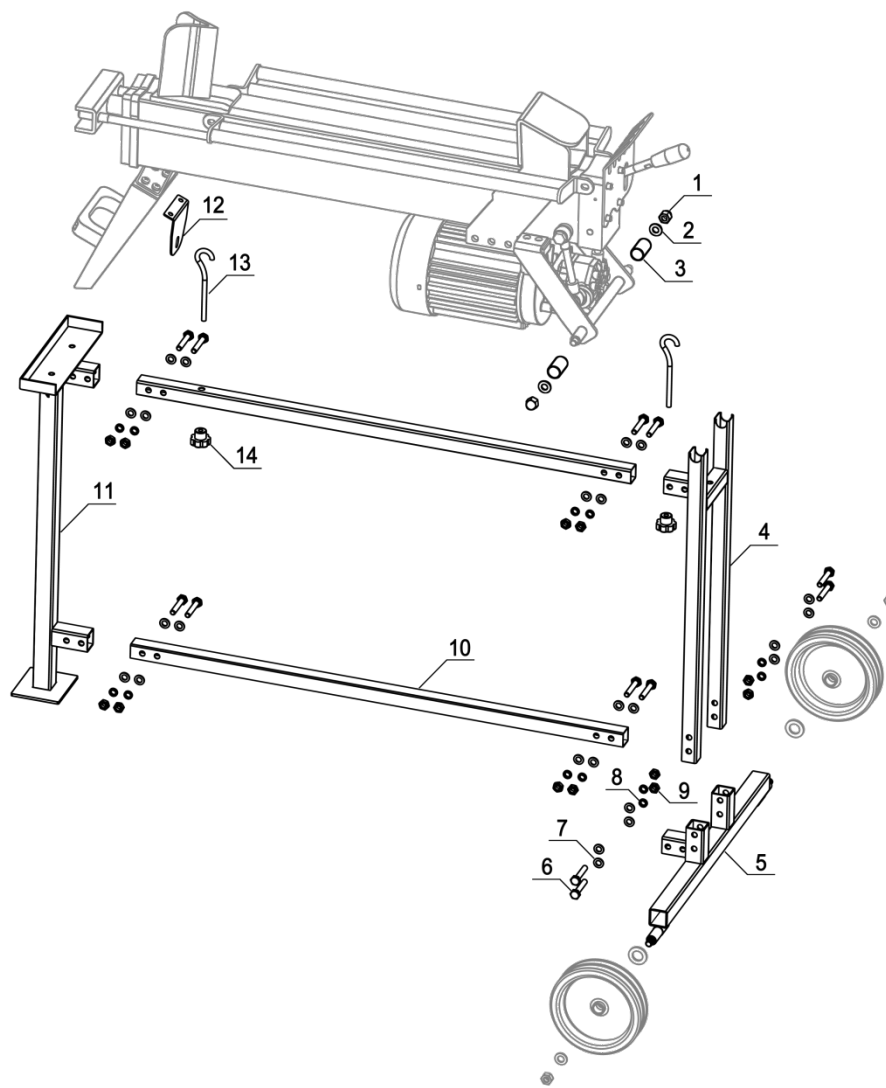
STEP 6: Place your log splitter on the stand. Ensure front legs in the bracket on top of the stand front frame, and wheel axel in top recession of the wheel frame stand. Put on the two hooks, and tighten. See *FIGURE 4*



NOTE:

- Check all bolts and nuts are tight to be sure the stand is in safe working condition.
- Be extra cautious when moving the log splitter mounted on the stand on rugged and rough terrain.
- During operation, ensure not stumbled. Safe footing is essential in preventing accidents.

Exploded Diagram & Packing List



REF #	PART #	PART NAME	SPECIFICATIONS	QTY PER SECTION
1	720-678	Snap Head Nut	Zinc, M10	2
2	750-525	Flat Washer	Zinc, M10*1.5	2
3	340-251	Axel Side Bushing	Ø 21*2*34	2
4	340-091	Wheel Frame Stand		1
5	340-082	Wheel Frame Axel		1
6	710-691	Hex Head Bolt	Zinc, M8*45	12
7	730-638	Flat Washer	Zinc, M8*1	24
8	750-834	Spring Washer	Zinc, M8*2.5	12
9	720-135	Nut	Zinc, M8	12
10	320-821	Beam		2
11	320-818	Front Frame		1
12	320-301	Front Hook Connecting Plate		1
13	710-344	Hook	Ø7*129	2
14	720-257	Knob Screw-on		2