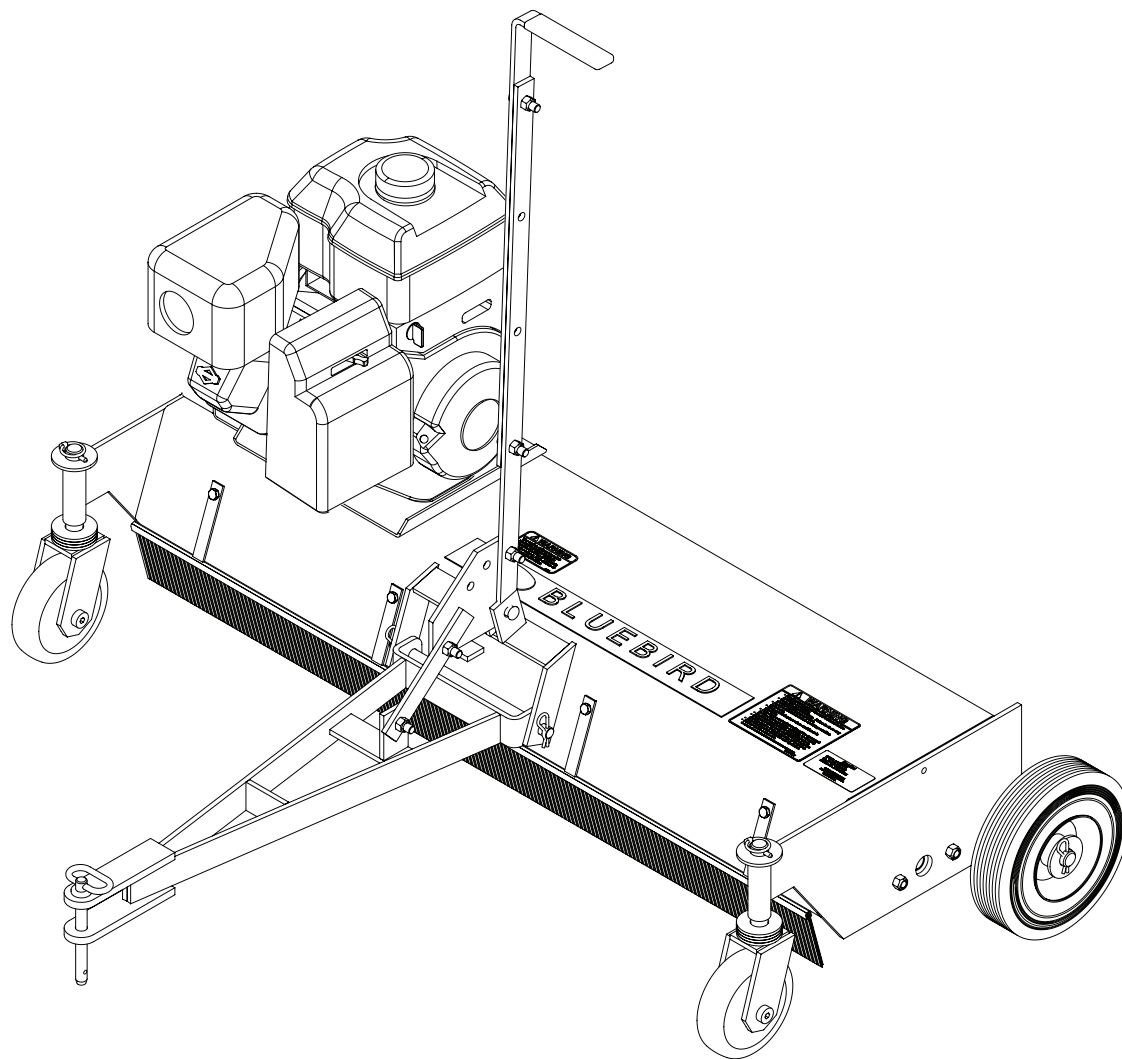




BLUEBIRD

Operator/Parts Manual



Models

D110 5HP B&S / 539 011100

Please read the operator's manual carefully and make sure you understand the instructions before using the machine.

CONTENTS

INTRODUCTION.....	4	MAINTENANCE.....	13
Use	4	Maintenance Schedule	13
Good Service.....	4	General Recommendations	14
Serial Number.....	4	Changing Engine	14
SYMBOLS AND DECALS	5	Changing Air Filter	14
Decals.....	5	Servicing The Precleaner	14
SAFETY	6	Servicing Cartridge	14
General Use.....	6	Storage	14
Preparations	8	Engine Speed	15
Operating.....	9	Carburetor.....	15
Movement/Transport.....	9	TROUBLESHOOTING	16
Storage	9	PARTS	17
Fuel System.....	10	SERVICE JOURNAL.....	21
Maintenance	10	Delivery service	21
ASSEMBLY	11	After the first 5 hours	21
Tools Required.....	11		
OPERATION	12		
Servicing The Engine.....	12		
Pre-Start Check	12		
Starting the Engine	12		

INTRODUCTION

Congratulations

Thank you for purchasing a BlueBird lawn care product. Through your confidence in us, you have chosen an exceptionally high quality product.

This manual is a valuable document. It describes your new BlueBird machine. Read the manual carefully before attempting to use the machine. Following the instructions (use, service, maintenance, etc.) can considerably increase the lifespan of your machine and even increase its resale value. Please contact your dealer for more information.

If you sell your BlueBird machine, make sure to give the operator's manual to the new owner.

Use

The dethatcher is used to remove the layer of thatch and surface-treat lawns, i.e. power-raking, de-mossing and collecting thatch in the form of old grass or moss.

Insure your machine

Contact your insurance company to check on insurance coverage for your new machine. You should have all-inclusive insurance for liability, fire, damage and theft.

Good Service

Before the machine was delivered it underwent inspection and was adjusted by your dealer. When you need spare parts or support in service questions, warranty issues, etc., please consult the following professional:

This Operator's Manual belongs to machine with serial number:	Engine number:

Serial Number

The machine's serial number can be found on the printed plate attached to the rear side panel of the machine. The plate includes the following information:

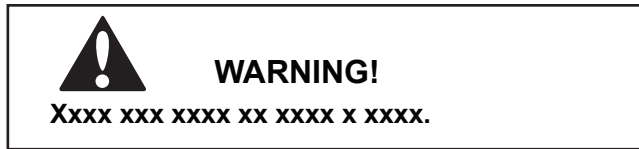
- The machine's type designation (MODEL).
- The machine's serial number (S/N).

Please state the type designation and serial number when ordering spare parts.

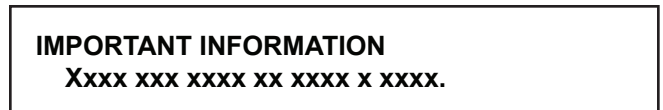
The engine's serial number is printed on the engine. The engine type is specified on the crankcase under the air filter but also appears on the decal on the starter.

Please state engine serial number and type when ordering replacement engine parts.

SYMBOLS AND DECALS

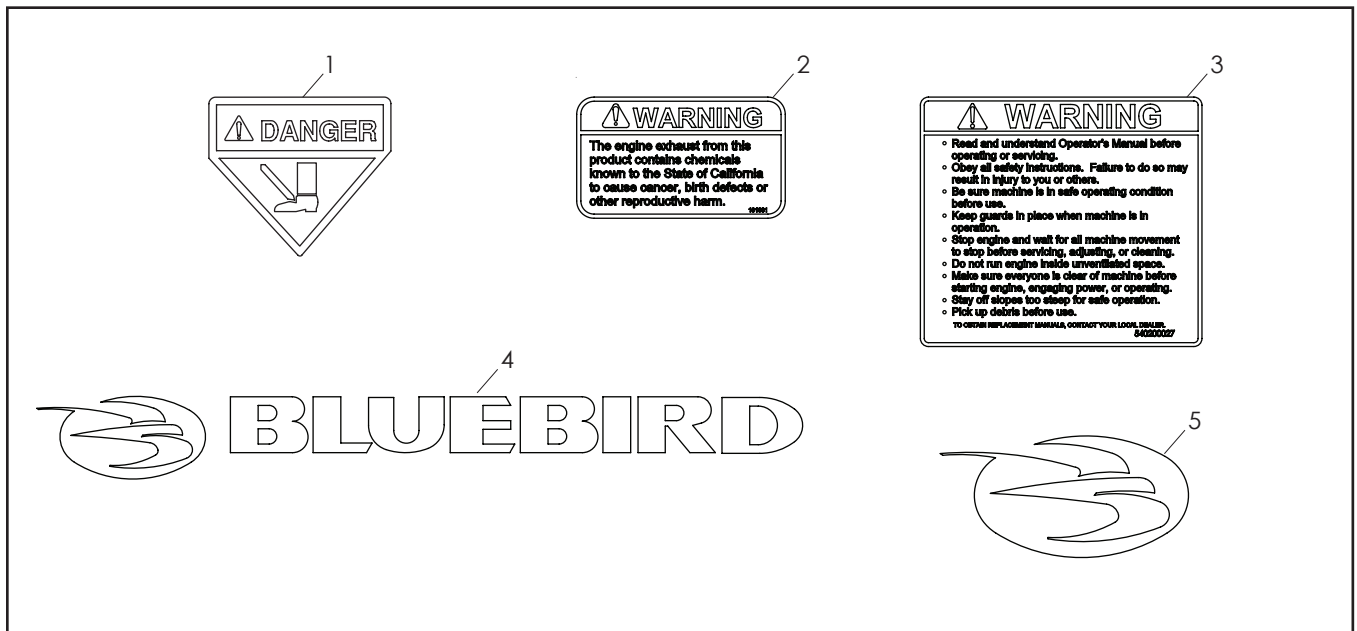


Used in this publication to notify the reader of a risk of **personal injury**, particularly if the reader **DOES NOT** follow the instructions given in the manual.



Used in this publication to notify the reader of a risk of **material damage**, particularly if the reader **DOES NOT** follow the instructions given in the manual.
Used also when there is a potential for misuse or misassembly.

Decals



1. DANGER - Watch Your Feet
2. Warning - Carbon Monoxide
3. Warning - Caution List
4. BlueBird Logo
5. BlueBird Logo

SAFETY

General Use

The object of this manual is to help you use your BlueBird machine safely and to give you information about how to maintain your machine. Please read the manual carefully before attempting to use the machine.

If after reading the operator's manual you are still unsure about the safety risks associated with use of the machine, you should not use the machine. Please contact your dealer for more information.

These safety instructions only address the basics for safe use. It would be impossible in the safety instructions to describe all possible risk situations that could arise when using the machine. You can, however, prevent accidents by always using common sense.

To obtain extra copies of the operator's manual, please contact your dealer.

IMPORTANT INFORMATION

Do not use the machine until you have read the operator's manual carefully and understand the instructions given. All maintenance work or adjustments not described in this manual must be performed by an authorized BlueBird service workshop.

- Read this manual carefully and make sure you understand it before using the machine or performing any maintenance. If the user cannot read this manual, it is the responsibility of the machine owner to explain the contents to the user.
- Follow all safety instructions. Failure to do so may result in injury to yourself or others.
- Accident prevention regulations, other general safety regulations, occupational safety rules and traffic regulations must be followed without fail.
- All users shall be trained in use of the machine. The owner is responsible for training users.
- Engage an authorized BlueBird workshop for all service and repairs not described in this manual.



WARNING!

Under no circumstances may the original design of the machine be modified without written approval from the manufacturer. Such modifications not only affect the performance and durability of the machine but may even pose a safety risk for users and those in the vicinity. Unauthorized modifications to the design of the machine may absolve the manufacturer from liability for any resulting personal injury or property damage. Modifying the machine without written approval from the manufacturer may void the guarantee.



WARNING!

Engine exhaust, some of its constituents and certain vehicle components contain or emit chemicals considered by the State of California to cause cancer, birth defects or other reproductive harm. The engine emits carbon monoxide, which is a colorless, poisonous gas. Do not use the machine in enclosed spaces.

SAFETY

- BlueBird original spare parts are designed and specified to maintain high quality and correct fit for optimal durability and lifespan. From a safety point of view, you should only use BlueBird original spare parts.
- Check that all safety decals are in place. See the chapter "Symbols and Decals".
- Learn how to use the machine and its controls safely and learn to recognize the safety decals.
- Only use the machine for sowing and dethatching lawns. It is not intended for any other use.
- Check that the machine is in serviceable condition prior to use; see the chapter "Maintenance/Maintenance schedule".
- Only use the machine in daylight or in other well-lit conditions. Keep the machine a safe distance from holes or other irregularities in the ground. Pay attention to other possible risks.
- Only allow the machine to be used by adults who are familiar with its use.
- Never allow children or persons not trained in the use of the machine to use or service it. Local laws may regulate the age of the user.
- People and animals can distract you causing you to lose control of the machine. For this reason, you should always concentrate and focus on the task at hand.
- Never leave the machine unsupervised with the engine running.
- Make sure that other people are nearby when you are using the machine so that you can call for help should an emergency arise.
- The machine is tested and approved only with the equipment originally provided or recommended by the manufacturer.



WARNING!

The engine can become very hot. To avoid being burned, you must turn off the engine and wait until all parts have cooled before touching the engine.



WARNING!

Overexposure to vibration may lead to circulatory or nerve damage, particularly in people who have impaired circulation. Contact your doctor if you experience symptoms that could have been caused by overexposure to vibration. Examples of common symptoms include numbness, pain, muscle weakness, change of skin color or an uncomfortable feeling of tingling. These symptoms appear most frequently in the fingers, hands or wrists.

SAFETY

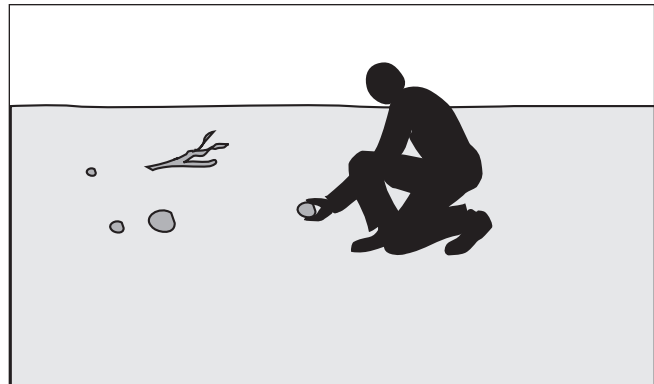
Preparations

- Make sure that you always have first aid equipment at hand when using the machine.
- Make sure nobody else is in the vicinity of the machine when you start the engine, engage the drive or run the machine.
- Make sure animals and people maintain a safe distance from the machine.
- Clear the area of objects such as stones, toys, steel wire, etc. that could become caught in moving machine parts and thrown out.
- Find and locate all fixed objects in the ground, such as sprinkler systems, poles, water valves, bases for washing lines, etc. Be certain to check for hidden electrical cables or similar in the surface of the lawn. Always run the machine around these objects. Never intentionally run the machine over foreign objects.
- Make sure all guard plates and protective shields are in place and intact when using the machine.
- Make sure no clothing, long hair or jewelry can catch in moving machine parts.
- Never use the machine when barefoot. Always wear protective shoes or protective boots with anti-slip and preferably with steel toes.
- Wear approved ear-protection when running the machine. Ask your dealer about approved ear-protection.
- Observe all safety instructions; otherwise you may injure yourself or others around you.
- Make sure that the machine is in serviceable condition prior to use.
- Make sure that all protective devices are in place when the machine is in use.
- Stop the engine and wait until all machine movement comes to a standstill before service, adjustment or cleaning.
- Do not run the engine in poorly ventilated spaces.
- Avoid slopes that are too steep to use the machine safely.

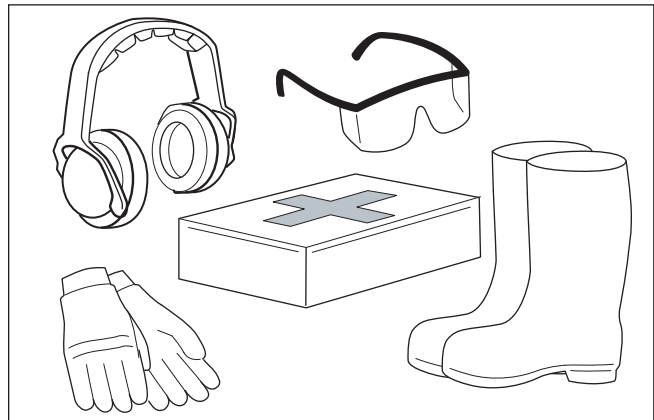


WARNING!

Always use approved protective clothing and approved protective equipment when using the machine. Protective clothing and protective equipment cannot eliminate the risk of accidents, but wearing proper clothing and the correct equipment will reduce the degree of injury should an accident occur. Ask your dealer about approved protective clothing and approved protective equipment recommended by BlueBird.



8011-198



8011-670-a

SAFETY

Operating

- Do not use the machine on grades of more than 20°. We recommend working across slopes rather than up and down. This will yield a more even result. Do not leave the machine standing on a slope unattended.
- Do not use the machine if you are tired, if you have consumed alcohol, or if you are taking other drugs or medication that can affect your vision, judgment or co-ordination.
- Never use the machine indoors or in spaces lacking proper ventilation.
- Do not use the machine on any surface other than grass.
- Make sure you have a proper foothold when using the machine, particularly when backing. Walk, don't run. Never work on wet grass. Poor traction may cause you to slip.
- Keep your hands and feet away from moving parts.
- Keep your hands and feet away from the work tools.
- Slow down and be especially careful on slopes. Make sure to run the machine in the recommended direction on slopes. Be careful when working close to sudden changes in level.
- Smoking, open flames or sparks in the vicinity of the machine are strictly forbidden. Gasoline is extremely flammable and carelessness in handling can result in personal injury or fire.
- Stop and inspect the equipment if you run over or into anything. If necessary, make repairs before beginning again.
- Whatever happens, you should always park the machine on even ground, disengage the drive, turn off the engine and wait until all moving parts have stopped before leaving the operating position behind the machine.



WARNING!

Engine exhaust, some of its constituents and certain vehicle components contain or emit chemicals considered to cause cancer, birth defects or other reproductive harm. The engine emits carbon monoxide, which is a colorless, poisonous gas. Do not use the machine in enclosed spaces.

Movement/Transport

- Turn off the engine and allow it to cool at least 2 minutes before transport.
- Be careful and use safe lifting and moving techniques when loading/unloading the machine.
- Fasten the machine properly in place with approved fasteners, such as tension belts, chains or rope. Always check that you are in compliance with applicable traffic regulations before transporting the machine.

Storage

- Allow the engine to cool before storing the machine. Never store the machine near a open flame.
- Store the machine with the fuel valve closed.
- Store the machine and fuel in such a way that there is no risk that leaking fuel or fumes can come in contact with flames or sparks from electrical machines, electric engines, relays, switches, boilers or similar.
- Store the machine in a locked space away from children and adults untrained in use of the machine.

Children

Serious accidents can occur if you fail to be on guard for children in the vicinity of the machine. Never assume that children will stay put where you last saw them.

- Keep children away from the machine.
- Keep children away from the work area and under close supervision by another adult.
- Keep an eye out and shut off the machine if children enter the work area.
- Never allow children to operate the machine.
- Be particularly careful near corners, bushes, trees or other objects that block your view.

SAFETY

Fuel System



WARNING!

Gasoline and gasoline fumes are poisonous and extremely flammable. Be especially careful when handling gasoline, as carelessness can result in personal injury or fire.

- Only store fuel in containers approved for that purpose.
- Never remove the fuel cap and fill the fuel tank when the engine is running.
- Always stop the engine when refueling.
- Do not smoke when filling the gasoline tank and do not pour gasoline in the vicinity of sparks or open flame.
- Never fill the fuel tank indoors.
- Before starting the machine after refueling, it should be moved at least 10 feet (3 M) from the location where it was filled.
- Turn off the fuel supply for storage or transport.
- If leaks arise in the fuel system, the engine must not be started until the problem has been resolved.
- Check the fuel level before each use and leave space for the fuel to expand, because the heat from the engine and the sun can otherwise cause the fuel to expand and overflow.
- Avoid overfilling. If you spill gasoline on the machine, wipe up the spill and wait until it has evaporated before starting the engine. If you spill gasoline on your clothing, change your clothing.



WARNING!

Wait until all moving parts are completely still before performing maintenance on the machine. Turn off the engine and remove the spark plug cable.

Maintenance

- Never make adjustments with the engine running.
- Disengage the drive units, shut off the engine and wait until all moving parts come to a complete stop before making adjustments, performing maintenance or cleaning the machine.
- Disconnect the spark plug cable before beginning repair work.
- Keep all components in serviceable condition and make sure all nuts, bolts, etc. are tight. Replace worn or damaged decals.
- Be careful when checking work tools. Use gloves when performing maintenance work.
- Never allow persons not trained in the use of the machine to perform service on it.
- Always park the machine on even ground before performing maintenance or making adjustments.
- Do not disassemble the engine. This can invalidate the engine warranty. Contact the dealer with any questions regarding service or guarantee matters. Follow all maintenance instructions.
- Do not change the setting of governors and avoid running the engine with overly high RPM. If you run the engine too fast, you risk damaging the machine components.
- Do not modify safety equipment. Check regularly to be sure it works properly. The machine must not be run with defective or disassembled safety equipment.
- The muffler is designed to maintain sound levels at an approved level and keep direct exhaust away from the user. Exhaust gases from the engine are extremely hot and may contain sparks that can cause fires or burn the user.
- Never use a machine with a defective muffler.
- Reduce the risk of fire by removing grass, leaves and other debris that may have caught in the machine.

ASSEMBLY

Tools Required

Wrench $\frac{9}{16}$ " Wrench $\frac{1}{2}$ " Wrench $\frac{7}{16}$ "
or adjustable wrench

Allen Wrench

1. After uncrating cartons, compare contents with the parts listed below.
2. If any parts are missing, contact the dealer.

Deck Assembly

Drawbar Assembly

Upper Chain Guard

Idler Sprocket Assembly

Parts Package

Operator's Manual

Engine, Briggs and Stratton, 5.5 HP Intek or

Engine, Honda, 5.5 GX

1. Install the square key in the engine crankshaft even with the end of the shaft. Slide the 10-tooth engine sprocket on the shaft with the shoulder side of the sprocket toward the engine. Do not tighten the set screws at this time. Final alignment will be made after the idler sprocket is installed.
2. Place the engine on the deck and tilt slightly to allow placement of the chain over the engine sprocket. Position the engine over the inside four holes in the deck and secure loosely with four $\frac{5}{16}$ " x $1\frac{1}{2}$ " hex bolts. The nuts are welded to the underside of the deck. Loosely align the teeth of the engine sprocket with the tine reel sprocket.
3. The idler sprocket assembly can now be attached to the deck. Two bolt holes are placed in the deck between the engine and the rectangular opening where the chain comes up from the reel. Place the idler sprocket assembly in position over these two holes. The sprocket should be inside the chain. Secure the assembly to the deck with two $\frac{5}{16}$ " x $\frac{5}{8}$ " bolts. Align the idler sprocket with the engine sprocket and the reel sprocket. After all three sprockets are aligned, tighten the set screw on the engine sprocket to the engine shaft with an Allen wrench. Securely tighten the four bolts that hold the engine to the deck.
4. Slide the idler sprocket forward so that the chain is tight. Using a $\frac{9}{16}$ " wrench, tighten the nut on the idler sprocket bolt. Check again to be sure all three sprockets are in alignment.
5. Attach the upper chain guard (4) using a $\frac{1}{4}$ " flat washer and a $\frac{1}{4}$ " lock nut.
6. Attach the drawbar assembly and lift assembly. Slide the drawbar pin through the "U" part of the drawbar and the weldment on the deck. The drawbar fits outside the deck weldment. Align the $\frac{1}{2}$ " hole in the lift pivot and the $\frac{1}{2}$ " hole in the handle. Slide these between the lugs on the top of the weldment on the deck. Secure the clevis pin and hair pin cotter. Tighten the bolt and nut, securing the lift handle to the lift pivot.

OPERATION

Servicing The Engine

Use SAE 30 detergent oil classified "For Service SF, SE & SD". Remove the oil fill plug, fill the crankcase to a point of overflowing (see diagram). Capacity is approximately 1¼ pints (0.6 liters). Replace the oil fill plug.

Fill the fuel tank. Use fresh, clean, unleaded automotive gasoline. Use of leaded gasoline will increase carbon and lead oxide deposits and reduce valve life.

Pre-Start Check

1. Make sure the stop switch is in the OFF position and spark plug wire is disconnected. Pull the starter rope slowly to make certain there are no foreign objects in the dethatcher.
2. Reconnect spark plug wire and attach cover to the spark plug.

Starting the Engine - Honda

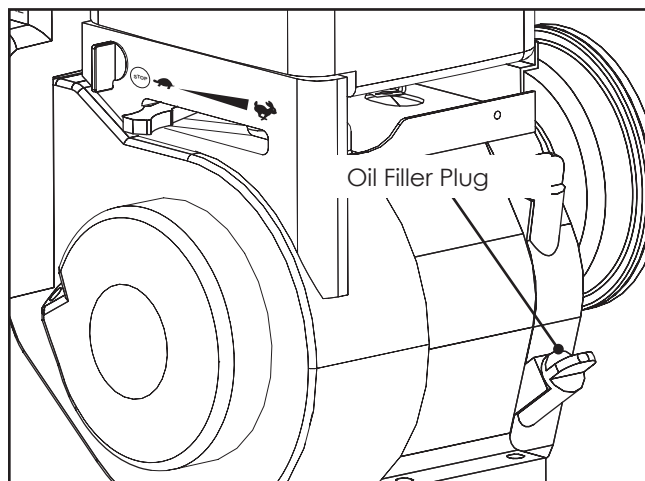
1. Turn the stop switch to the "ON" position.
2. Move the choke lever to the FULL CHOKE position and the fuel valve to ON. (see diagram).
3. Grasp the starter handle firmly. Pull the handle with a rapid continuous motion.
4. When the engine starts, move the choke to ½ choke and then to NO choke position.

IMPORTANT INFORMATION

Clear the lawn of any debris. Clearly mark rocks and other fixed objects. Be especially sure to check for hidden electrical cables or similar in the surface of the lawn.

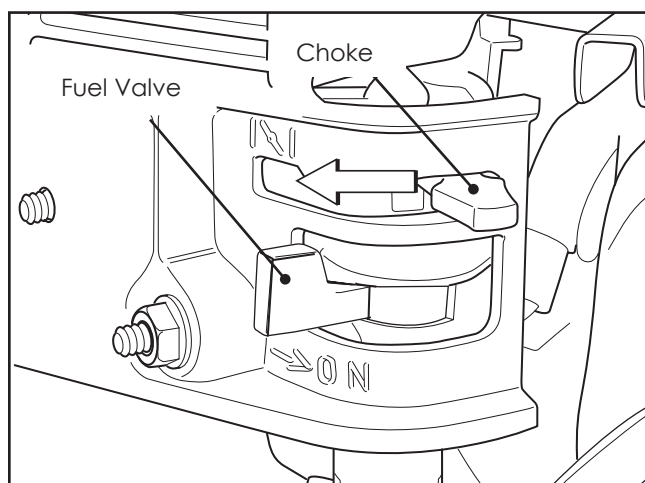
Starting the Engine - Briggs and Stratton

1. Open the fuel valve.
2. Move the choke lever to the FULL CHOKE position and the fuel valve to ON.
3. Grasp the starter handle firmly. Pull the handle with a rapid continuous motion.
4. When the engine starts, move the choke to ½ choke and then to NO choke position.



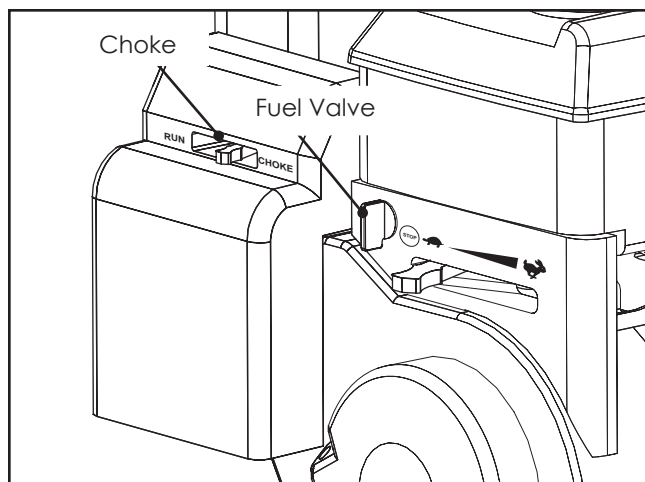
8060-019

Fill with engine oil



8011-036

Open the fuel valve - Honda engine



8060-019

Open the fuel valve - B&S engine

MAINTENANCE

Maintenance Schedule

Maintenance	Daily before starting	Maintenance interval - hours		
		5	25	50
Check the engine oil level	●	●		
Replace engine oil ¹⁾			●	
Check the air filter	●			
Clean the air filter ²⁾				●
Replace the spark plug				●
Check decals and warning signs	●			
Check blade wear and condition			●	
Check the chassis, bolts and set screws	●			

¹⁾ First change after 5 hours. ²⁾ In dusty conditions maintenance is required at shorter intervals.



WARNING!

No service operations may be performed on the engine or unit unless:

- The engine is stopped.
- The ignition cable has been removed from the spark plug.
- The machine is securely parked where it will not tip or begin rolling.

MAINTENANCE

General Recommendations

Once a year, replace the spark plug and air filter. A new spark plug and air filter assures proper air/fuel mixture and helps the engine run better and last longer.

Changing Engine

Change the oil after the first five hours of operation. Then, under normal operating conditions, change the oil after every 25 hours of operation or after every season, whichever occurs first. In high ambient temperatures or in dusty conditions, the oil should be changed more often.

Remove the drain plug and drain the oil from the engine while it is still warm. Replace the drain plug. Remove the oil fill plug and dipstick and refill with fresh SAE 30 grade oil to the line marked "F" for full. Replace the fill plug. Check the oil level using the dipstick after every five hours of engine operation.

Changing Air Filter

Service the precleaner if your engine is so equipped every 25 hours or every season, whichever occurs first.

If the engine is equipped with a precleaner, service the cartridge after every 100 hours or after every season, whichever occurs first. If the engine is NOT equipped with a precleaner, service the cartridge after every 25 hours or after every season, whichever occurs first.

NOTE: Service all parts more often in dusty conditions.

Servicing The Precleaner

Loosen the two screws and remove the air-cleaner cover. Carefully remove precleaner and wash in liquid detergent and warm water. Squeeze dry in clean cloth. Saturate in engine oil. Squeeze in clean, absorbent cloth to remove ALL excess oil.

Servicing Cartridge

Carefully remove cartridge. Clean by tapping gently on a flat surface. If very dirty, REPLACE or wash in non-sudsing detergent and warm water solution. Rinse thoroughly with water flowing from the mesh side until the water flows clear. Allow the cartridge to stand and dry thoroughly before using. Reinstall the cartridge and the precleaner. Reinstall the air cleaner cover and tighten the screws.

Storage

If the dethatcher will be stored for 30 days or more, please follow these instructions:

1. Remove all fuel from the gas tank and run the engine until the fuel system is completely empty and the engine stops.
2. Lubricate as shown in the maintenance check list (Page 13).
3. While the engine is warm, drain the oil from the crankcase. Refill with fresh oil.
4. Remove the spark plug and pour approximately ½ ounce of engine oil into the cylinder and crankcase, pouring slowly to distribute the oil. Replace the spark plug.
5. Store your dethatcher in a clean, dry place. DO NOT store it under a plastic cover. Plastic does not breathe and thus condensation will form, causing the dethatcher to rust.

Engine Speed

The engine's maximum speed has been factory set. Do not attempt to adjust the speed as it may result in personal injury. If you believe the engine is not running at the proper speed, take the unit to an authorized engine service center for repair and adjustment.

Carburetor

1. Gently turn needle valve clockwise until it just closes. Valve may be damaged by turning it too far.
2. Open needle valve 1½ turns counterclockwise. This initial adjustment will permit the engine to start and warm up about 5 minutes, prior to final adjustment.
3. Place speed control in "SLOW" position.
4. Turn needle valve in until engine slows (clockwise -lean mixture).
5. Turn it out past smooth operating point until engine runs unevenly (rich mixture).
6. Turn needle valve to the midpoint between rich and lean so the engine runs smoothly.
7. Adjust idle RPM. Rotate throttle counterclockwise and hold against stop while adjusting idle speed screw to obtain 1750 RPM.
8. Release throttle. Engine should accelerate without hesitation or sputtering. If engine does not accelerate properly, the carburetor should be readjusted, usually to a slightly richer mixture.

TROUBLESHOOTING

Before performing any of the corrections in in this Troubleshooting Chart, refer to the appropriate information contained in this Manual for the correct

safety precautions and operating or maintenance procedures. Contact the local authorized engine service dealer for engine service.

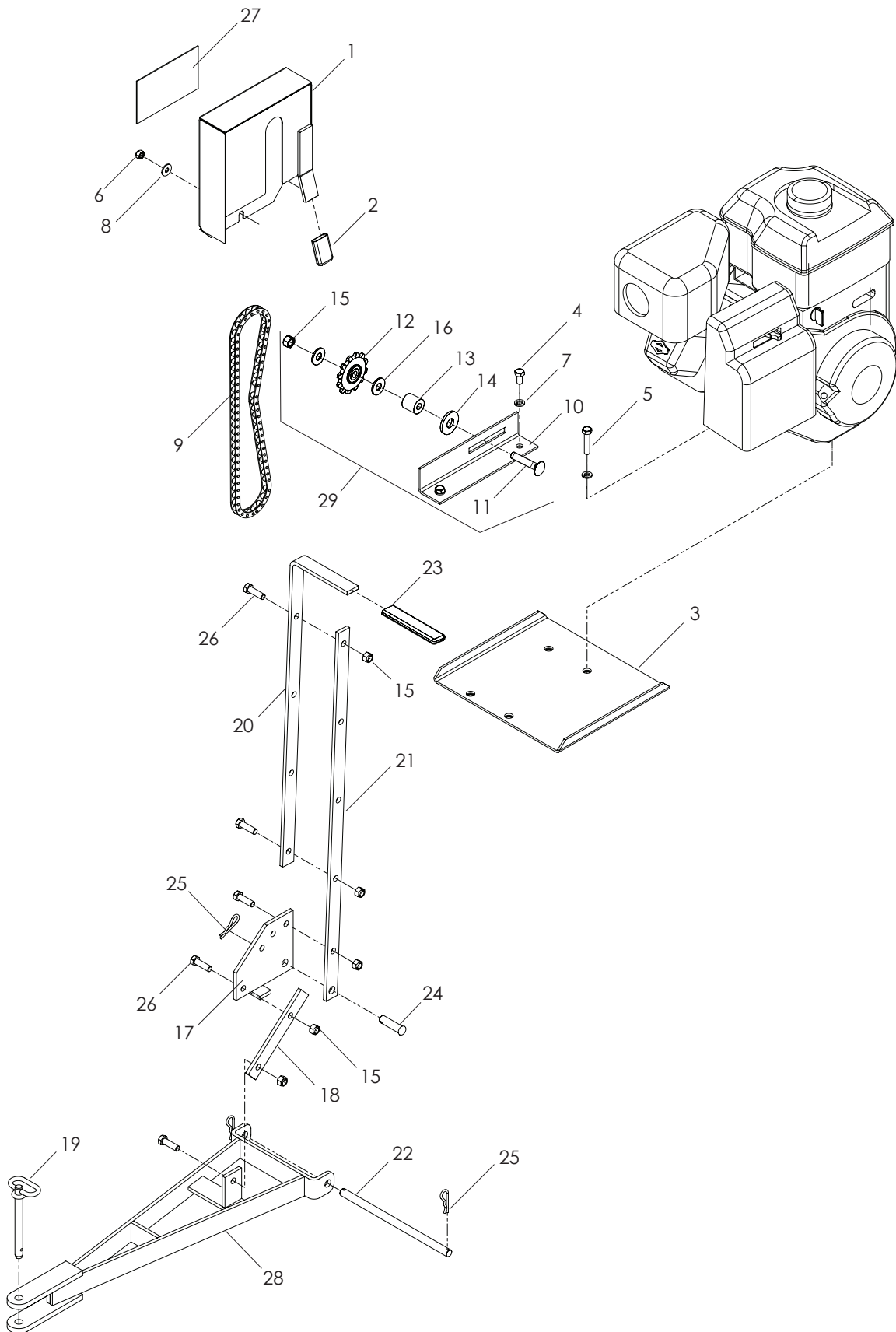
PROBLEM	POSSIBLE CAUSE	CORRECTION
Engine Does Not Start	Spark plug wire disconnected Engine ON/OFF Switch in OFF position Fuel tank empty Stale gasoline Dirty air filter	Reconnect spark plug wire Put switch in ON position Add gasoline Drain fuel tank and add fresh gasoline Clean or replace air filter
Engine runs poorly	Bad spark plug Dirty air filter Incorrect choke setting Stale gasoline Dirt or water in fuel tank	Inspect spark plug Clean or replace air filter Reset choke Drain fuel tank and add fresh gasoline See engine service dealer
Engine Overheats.	Carburetor out of adjustment Oil level is low	See engine service dealer Check and add oil level
Unusual vibration or noise	Solid object jammed in unit Engine cylinder shaft or crankshaft bent or damaged Loose engine mounting bolts/nuts Loose or missing bolts/nuts Engine shaft bearings damaged	Check and remove obstruction See engine service dealer Tighten bolts/nuts Tighten or replace bolts/nuts See engine service dealer

[illegible]

DECK

ITEM	PART NO.	QTY.	DESCRIPTION	ITEM	PART NO.	QTY.	DESCRIPTION
1..	539091009 2	...BEARING, REEL	17..	539108555	... 100SCREW $\frac{5}{16}$ -9 x 1 HEX HD
2..	539091017 1	...GUARD, CHAIN LOWER	18..	539109556	... 100WASHER $\frac{5}{16}$ EXT LK
3..	539091034 2CASTER YOKE	19..	539109561 20WASHER $\frac{3}{4}$ FLAT STD
4..	539096043 2WHEEL $1\frac{1}{2}$ x 5 x $\frac{1}{2}$	20..	539915894 1WOODRUFF KEY
5..	539108578 1SB $\frac{1}{2}$ x $2\frac{1}{4}$ ALLEN HD	21..	539108507 4HCS $\frac{3}{8}$ -16 x $\frac{3}{4}$
6..	539976979 6NUT $\frac{3}{8}$ -16 HEX NYLOC	22..	539990598 4WASHER $\frac{1}{4}$ FLAT
7..	539091030 1	...BRUSH	23..	539091028 2WHEEL $2\frac{1}{2}$ x 8
8..	539091065 1	...SPROCKET, ENGINE/REEL	24..	539101881 1DECAL, PROP 65
9..	539099051 2	...PIN, LYNCH $\frac{3}{16}$ x $1\frac{1}{4}$	25..	539111041 1DECAL, BLUEBIRD
10..	539976989 2	...PIN, HAIR	26..	539008338 1 DECAL
11..	539108499 4	...HCS $\frac{1}{4}$ -20 x $\frac{5}{8}$	27..	539008318 1DECAL, SAFETY LIST
12..	539976978 4	...NUTSERT $\frac{1}{4}$ -20	28..	540200076 1DECAL, FOOT
13..	539091038 1SHAFT	NOT SHOWN			
14..	539091050 50DUAL CLAMP ASSEMBLY	576224201 1	...DECK ASSEM	
15..	540091010	... 100TINE, SPRING W/SLEEVE	539091029 2	...CASTER/WHEEL ASSEM	
	539091111	... 100TINE, SPRING W/O SLEEVE	539091000 1	...TINE REEL ASSEM	
16..	540091011	... 100CLAMP				

FRAME



FRAME

ITEM	PART NO.	QTY.	DESCRIPTION	ITEM	PART NO.	QTY.	DESCRIPTION
1..	539091018 1	GUARD, UPPER CHAIN	16..	539990517 2	WASHER $\frac{3}{8}$ FLAT STD
2..	539099623 1	GRIP, VINYL	17..	539091047 1	PIVOT PLATE
3..	539200780 1	SUPPORT, ENGINE	18..	539091051 1	LIFT LINK, DRAWBAR
4..	539108392 2	HCS $\frac{5}{16}$ -18 x $\frac{5}{8}$	19..	539094115 1	PIN $\frac{1}{2}$ "
5..	539976935 4	HCS $\frac{5}{16}$ -18 x $1\frac{1}{2}$	20..	539096016 1	HANDLE, UPPER
6..	539976978 1	NUT $\frac{1}{4}$ -20 H EX NYLOC	21..	539096017 1	HANDLE, LOWER
7..	539990187 6	WASHER $\frac{5}{16}$ SLW ZD	22..	539096019 1	PIN, DRAWBAR
8..	539990598 1	WASHER $\frac{1}{4}$ FLAT ZD	23..	539099095 1	GRIP, PULL
9..	539091066 1	CHAIN 60 x $\frac{1}{2}$ PITCH	24..	539107227 1	CLEVIS PIN, $\frac{1}{2}$ x $1\frac{3}{4}$
10..	539091037 1	BRACKET, IDLER	25..	539976989 3	SPRING RETAINER
11..	539100145 1	RHSNB $\frac{3}{8}$ -16 x 2	26..	539976941 5	HCS $\frac{3}{8}$ -16 x $1\frac{1}{4}$
12..	539091031 1	SPROCKET, IDLER	27..	539008337 1	DECAL, LOGO BB
13..	539000032 1	SPACER, 3/8, 7/8, 7/8	28..	539096011 1	DRAWBAR
14..	539109554 1	WASHER $\frac{1}{2}$ FLAT	29..	539091039 1	IDLER SPROCKET ASSEM
15..	539976979 6	NUT $\frac{3}{8}$ -16 HEX NYLOC				Items 12-16

SERVICE JOURNAL

Action

Date, stamp, signature

Delivery service

1. Break the packaging and make sure the machine has not been damaged in transport.
2. Where applicable, assemble accompanying components.
3. Check that the machine design corresponds to the customer order.
4. Check that the right amount of oil is in the engine.
5. Check that the working equipment is properly set.
6. Fill the fuel tank and start the engine.
7. Check decals and information attached to the unit.
8. Check for leakage.
9. Inform the customer about:
 - The need and advantages of following the service schedule.
 - The effects of service and maintaining a service journal on the machine's resale value.
10. Fill in the sales papers, etc.

☐☐☐☐☐☐☐☐☐☐☐

Delivery service has been carried out.

No remaining notes.

Certified:

After the first 5 hours

1. Change engine oil.
2. Tighten screws and nuts.

☐☐

[illegible]



68 South Squirrel Rd
Auburn Hills MI 48326