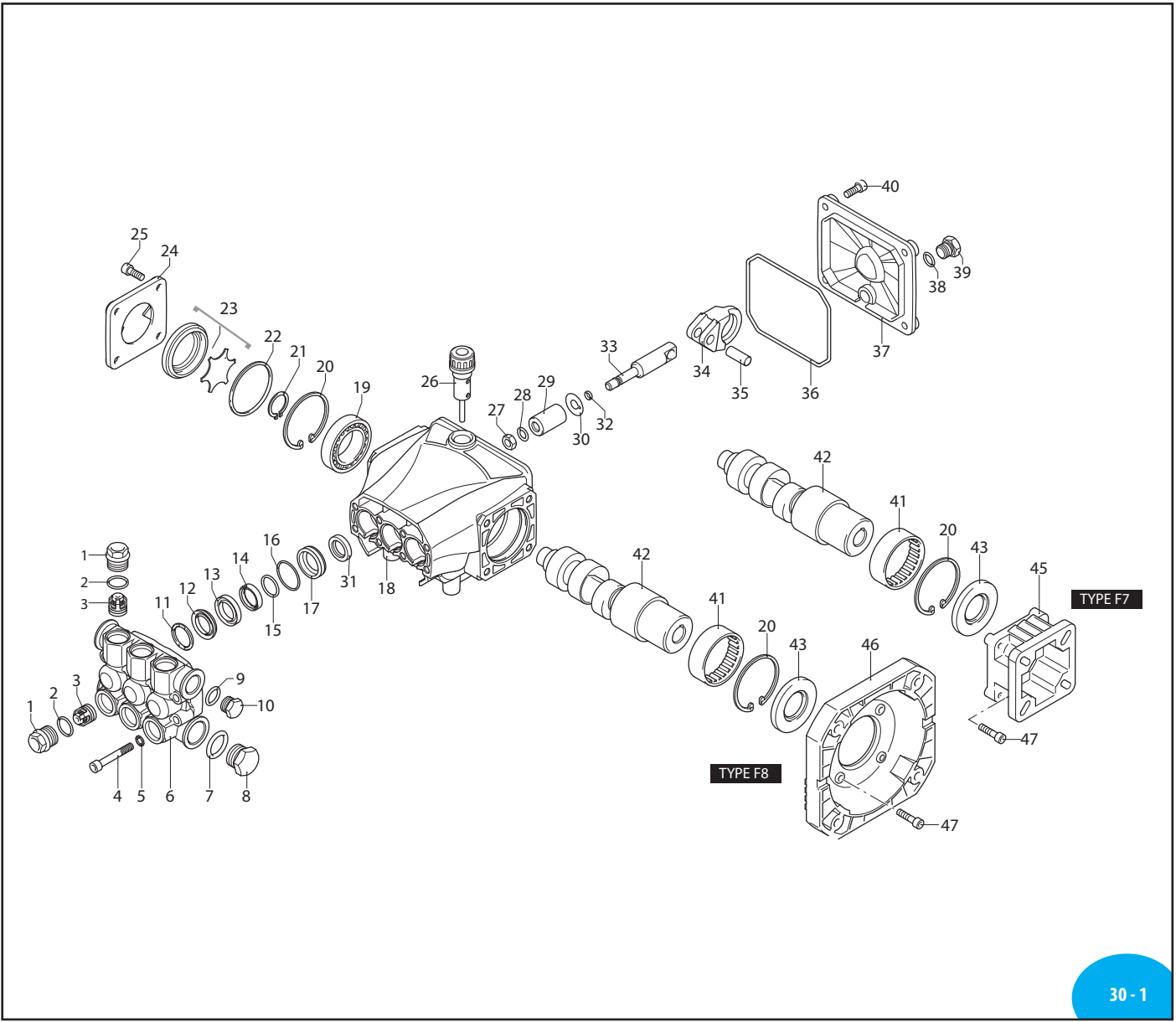
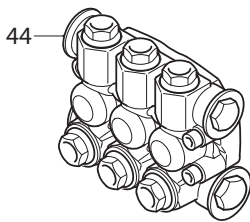


# A.R. NORTH AMERICA RCV 3400 RPM



30 - 1

## Complete Pump Head



30 - 2



# RCV 3400 RPM PARTS/KITS

Commercial Pumps

Pos	Code	Description	Qty	Note
1	3200110	Valve Cap (216 in/lbs)	6	
2	1200690	O-Ring Ø 15.6x1.78	6	
3	2769050	Complete Valve	6	
4	800410	Head Bolt M6x40	8	
5	1381550	Lock Washer	8	
6	3200100	Blank Head	1	
7	180101	O-Ring Ø 17.5x2	1	
8	820361	Plug 1/2" G (354 in/lbs)	1	
9	740290	O-Ring Ø 14x1.78	1	
10	1989600	Plug 3/8" G Brass, w/O-ring (221 in/lbs)	1	
11	2760220	Support Ring Ø 15	3	
12	1342761	High Pressure Seal Ø 15	3	
13	3200160	Front Piston Guide Ø 15	3	
14	3200690	Low Pressure Seal	3	
15	3200700	Fiber Ring	3	
16	770590	O-Ring Ø 21.95x1.78	3	
17	3200150	Rear Piston Guide Ø 15	3	
18	3200010	Pump Body	1	
19	1780490	Bearing	1	
20	1260790	Retainer Ring Ø i52	1	
21	1780550	Retainer Ring Ø e 20	1	
22	395081	O-Ring Ø 47.30x2.62	1	
23	3209615	Oil Indicator	1	
24	3200070	Side Cover	1	
25	1200430	Bolt M6x16 (92 in/lbs)	8	
26	3201890	Oil Cap (Vented Dipstick)	1	
27	1260110	Nut M8 (106 in/lbs)	3	
28	1260100	Washer 8x13x0.50	3	
29	1260120	Piston Ø 15	3	
30	1260091	Washer (slinger)	3	
31	1260460	Oil Seal	3	
32	480480	O-Ring Ø 4.48x1.78	3	
33	3200060	Piston Rod	3	
34	3200040	Connecting Rod	3	
35	1780050	Connecting Rod Pin	3	
36	2760280	O-Ring Ø 101.27x2.62	1	
37	3200030	Rear Cover	1	
38	820510	O-Ring Ø 10.82x1.78	1	
39	880581	Plug 1/4" G	1	
40	3200220	Bolt TCEI 6x16	4	
41	1321190	Bearing	1	

Pos	Code	Description	Qty	Note
42	3201200	Hollow Shaft 11 ID Stamp Ø 5/8"	1	○
	3200860	Hollow Shaft 8 ID Stamp Ø 5/8"	1	●
	3201180	Hollow Shaft 11 ID Stamp Ø 3/4"	1	□
	3201170	Hollow Shaft 9 ID Stamp Ø 3/4"	1	■
	3200350	Hollow Shaft 8 ID Stamp Ø 3/4"	1	⊠
3200340	Hollow Shaft 7 ID Stamp Ø 3/4"	1	▽	
43	480671	Shaft Oil Seal	1	
44	43015	Complete Pump Head	1	
45	1579	F7 Flange Gas Engine	1	
46	1584	F8 Flange Electric Motor (NEMA 56-C)	1	
47	1200430	Bolt M6x16	4	

AR64516 Oil (16 oz) - Capacity 9.81 oz, QTY 1  
 Pumps are Prefilled with Oil from the Factory.  
 Change oil every 3-5 months or every 500 hours of operation.  
 Tightening torque (Tolerance + 0 ÷ -10%)

OPTIONAL PARTS/KITS				
Pos	Code	Description	Qty	Note
1	3201430	Tapped Valve Cap 1/8" threaded (216 in/lbs)	1	
	43434	Hot Water Seal Kit Ø 15	1	
	2191	Support Ring Kit	1	Pos 11
	42470	O-Ring Kit	1	Pos 2, 7, 9, 16, 22, 32, 36, 38

LEGEND			
Symbol	Material	Description	
▽	-	RCV35G25D	Ø 15
○	-	RCV2G25E	Ø 15
●	-	RCV3G25E	Ø 15
□	-	RCV2G22D, RCV2G25D	Ø 15
■	-	RCV25G27D	Ø 15
⊠	-	RCV3G25D, RCV3G27D	Ø 15

Valve Kit 2186	
Pos.	Qty
3	6

Piston Kit 42475	
Pos.	Qty
29	3

Water Seal Kit 42476	
Pos.	Qty
12	3
14	3
15	3
16	3

Oil Seal Kit 42474	
Pos.	Qty
31	3
43	1

**COUNTRY OF ORIGIN: CHINA/ITALY**  
 LAST UPDATED: APRIL 2023