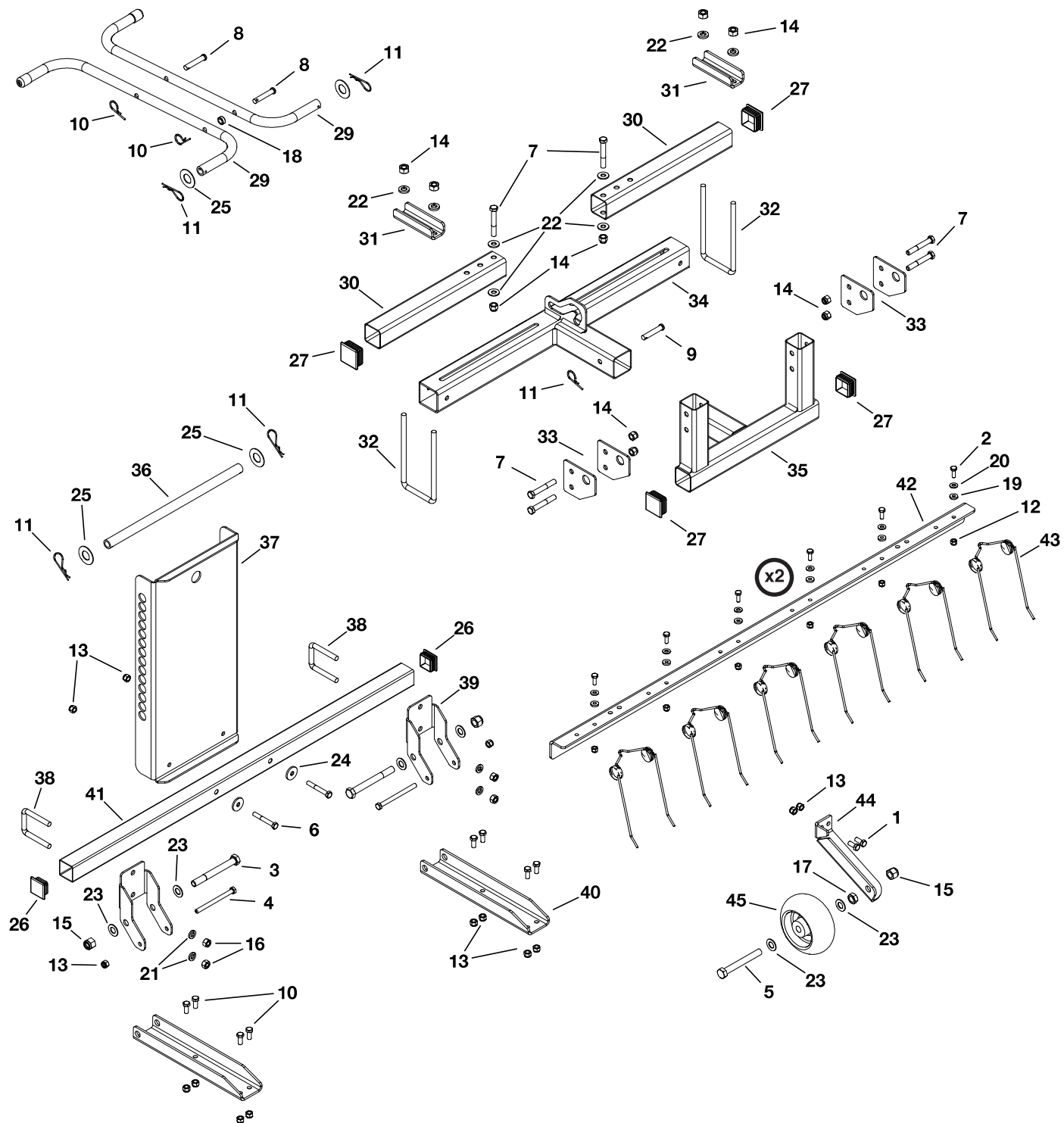


REPAIR PARTS FOR 45-0597 ZERO TURN DETHATCHER



REPAIR PARTS FOR 45-0597 ZERO TURN DETHATCHER

| REF | QTY | PART NO | DESCRIPTION | REF | QTY | PART NO | DESCRIPTION |
|-----|-----|-----------|---------------------------------|-----|-----|----------|----------------------------|
| 1 | 10 | 43182 | Bolt, Hex 5/16-18 X 3/4 GR5 | 24 | 2 | 736-0231 | Washer, .344 X 1.125 X .12 |
| 2 | 12 | 43012 | Bolt, Hex 1/4-20 X 3/4 GR5 | 25 | 4 | 43009 | Washer, .785 X 1.57 X .057 |
| 3 | 2 | 47024 | Bolt, Hex 1/2-13 X 4-1/2 GR5 | 26 | 2 | 2-698 | Plug, Square 1.50" |
| 4 | 2 | 47407 | Bolt, Hex 5/16-18 X 4 GR5 | 27 | 4 | 2-699 | Plug, Square 1.75" |
| 5 | 1 | 45100 | Bolt, Hex 1/2-13 X 4 GR5 FT | 28 | — | — | — |
| 6 | 2 | 43224 | Bolt, Hex 5/16-18 X 2-1/4 GR5 | 29 | 2 | 45823BL3 | Push Tube |
| 7 | 6 | 43432 | Bolt, Hex 3/8-16 X 2-1/2 GR5 | 30 | 2 | 45814BL3 | Slider Tube |
| 8 | 2 | 43023 | Pin, Clevis 3/8 X 2 | 31 | 2 | 45908BL3 | Mounting Bracket |
| 9 | 1 | HA23636 | Pin, Clevis 3/8 X 2-1/4 | 32 | 2 | 45909 | U-Bolt, 7.0 X 3.5 X 3/8" |
| 10 | 2 | 43055 | Pin, Hair 3/32 X 1.8 | 33 | 4 | 45816BL3 | Pivot Bracket |
| 11 | 5 | 43343 | Pin, Hair Cotter 3/32 X 2-5/1 | 34 | 1 | 69643BL3 | Hitch Mount Ass'y |
| 12 | 12 | 47189 | Nut, Hex 1/4-20 Nylock | 35 | 1 | 69642BL3 | Blade Mount Ass'y |
| 13 | 14 | 47810 | Nut, Hex .312-18 Nylock | 36 | 1 | 45817BL3 | Pivot Shaft |
| 14 | 6 | HA21362 | Nut, Hex 3/8-16 Nylock | 37 | 1 | 2-446BL3 | Bulkhead |
| 15 | 3 | 41657 | Nut, Hex 1/2-13 Nylock | 38 | 2 | 46853 | Bolt, U Type 3/8" |
| 16 | 8 | 43015 | Nut, Hex 3/8-16 | 39 | 2 | 27117BL1 | Mount Bracket |
| 17 | 1 | 43019 | Nut, Hex 1/2-13 Jam | 40 | 2 | 2-701BL3 | Lift Bracket |
| 18 | 1 | 23625 | Spacer, .380 ID X .620 OD X .27 | 41 | 1 | 2-700BL3 | Tube, Square 1.5" X 38" |
| 19 | 12 | 2-718 | Washer, Rubber 5/8 OD X 1/4 ID | 42 | 2 | 2-702BL3 | Tine Mount Bracket |
| 20 | 12 | 736-0142 | Washer, .281 X .625 X .065 | 43 | 12 | 46761 | Thatcher Spring |
| 21 | 8 | 43003 | Washer, Loc 3/8 | 44 | 1 | 2-703BL3 | Wheel Mount Bracket |
| 22 | 4 | 43081 | Washer, .375 X .875 X .083 | 45 | 1 | 48098 | Anti-scalp Wheel |
| 23 | 6 | R19171616 | Washer, .531 X 1 X .059 | 46 | 1 | 3-256 | Owners Manual |