

---

**Kaishan Technologies  
Rotary Screw Air  
Compressor**

---

**KRSD 100HP  
Parts Manual**

---

---

PN: 97002023000140

Release July 2023, Version: I

(115PSI/125PSI/150PSI/230V/380V/460V/575V/60HZ/FS/VSD/ASME/UL)

## TABLE OF CONTENTS

---

<b>Service Parts .....</b>	<b>3</b>
<b>Serial Number .....</b>	<b>3</b>
<b>Fluid Specification .....</b>	<b>4</b>
<b>Spare Parts .....</b>	<b>5</b>
<b>Airend and Inlet valve.....</b>	<b>6</b>
<b>Base Mounting.....</b>	<b>10</b>
<b>Reservoir .....</b>	<b>12</b>
<b>Driving System and Electrical Motor .....</b>	<b>14</b>
<b>Air Cooler .....</b>	<b>16</b>
<b>Fluid Piping.....</b>	<b>18</b>
<b>Air Piping(Fixed speed) .....</b>	<b>20</b>
<b>Air Piping(VSD).....</b>	<b>22</b>
<b>Cabinet(Fixed speed) .....</b>	<b>24</b>
<b>Cabinet(VSD) .....</b>	<b>26</b>
<b>Electrical Enclosure .....</b>	<b>28</b>
<b>Decals .....</b>	<b>37</b>
<b>Standard Terms and Conditions.....</b>	<b>37</b>
<b>Appendix.....</b>	<b>40</b>
<b>Contact Information .....</b>	<b>41</b>

## Service Parts

---

The following information must be provided for ordering service parts:

1. The serial number of unit must be provided. It will be verified to ensure correct replacement parts are ordered.
2. Service parts must be ordered from closest authorized distributor.
3. Exact part number, quantity and delivery method must be provided.

All service parts must be ordered through nearest authorized distributor. Insist on genuine manufacturer parts only. Failure to do so may void product warranty.

## Serial Number

---

The unit serial number can be found on serial number tag, which is located on the cabinet corner post of the unit. The serial number tag is shown as follows.



## Fluid Specification

---

All KRSD Compressors must use Kaishan Technologies recommended fluid for maintenance.

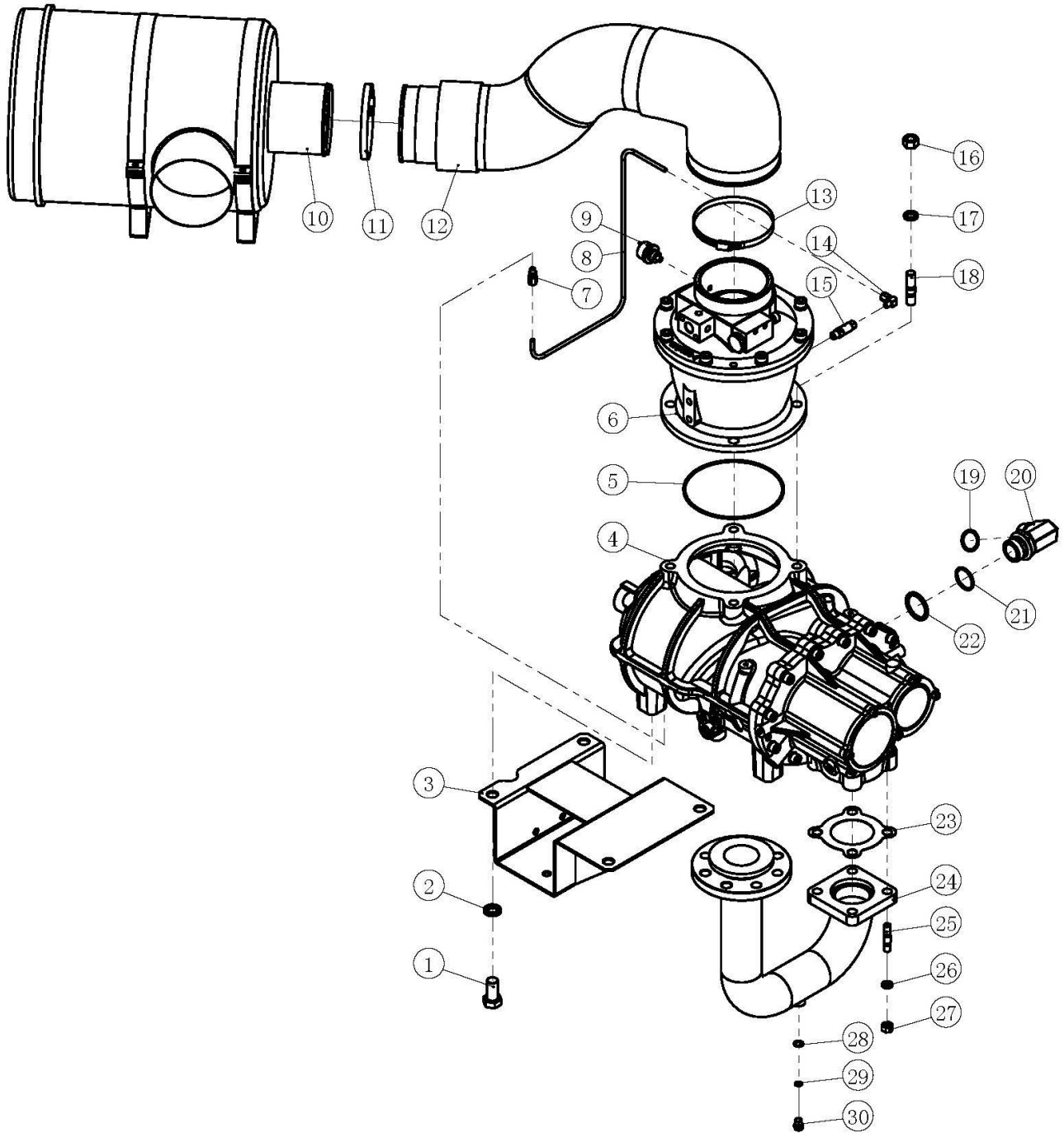
## Spare Parts

Recommended spare parts are shown as follows:

ITEM	No.	QTY	PART NUMBER	DESCRIPTION		
1		1	56020 300440	Air filter element		
2		1	07709 13530 20	Oil filter		
3		1	55220 273360	Fluid/air separator element		

# Airend and Inlet valve

(115PSI/125PSI)



## Airend and Inlet valve

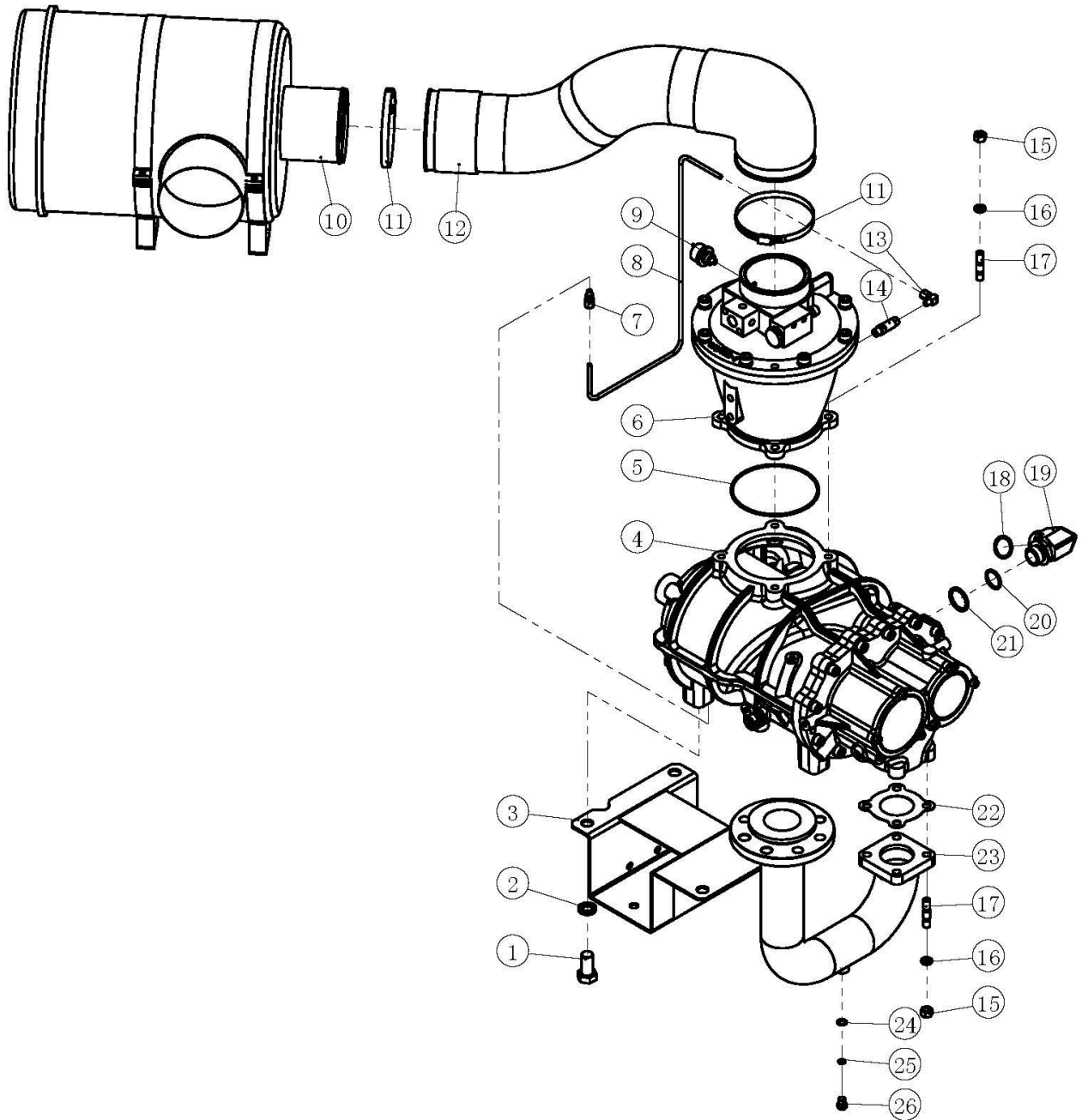
(115PSI/125PSI)

NO.	VERSION	PN	DESCRIPTION	QTY	REMARK
1		01307 20040 00	Bolt	4	M20×40
2		01365 20000 00	Washer	4	20
3	S01	92433 01001 01	Airend support	1	
4		1040101	Airend	1	
5		02901 18000 30	O ring	1	180X3.55
6		01663 00000 00	Intake valve	1	
6A*		04002 00125 00	Inlet valve kit	1	Spring A, Guidance tape A, Spring B, O-ring 180x3,55, Guidance tape B, O-ring 235x5,3, O-ring 150x3,55.
6B*		01692 03000 01	Check valve, inlet valve	1	
6C*		01692 00010 03	Blowdown valve	1	
7		01512 06110 00	Joint	1	
8		92433 01100 01	Scavenging pipe	1	
9		02809 00102 00	Air filter indicator	1	
10		07702 02030 44	Air filter	1	
11		04401 13015 00	Hoop	1	
12		02907 15130 66	Flexible pipe	1	
13		04401 14516 50	Hoop	1	
14		01513 06100 00	Joint	1	
15		01610 03000 00	Check valve	1	
16		01322 16000 00	Nut	4	M16
17		01365 16000 00	Washer	4	16
18		01392 16045 00	Stud	4	AM16×45
19		02901 03250 30	O ring	1	32.5X3.55
20		22435 06200 25	Elbow	1	G1.25-M45X2
21		02901 03870 30	O ring	1	38.7X3.55
22		02201 00032 00	Screw washer	1	
23	S02	02217 13004 16	Gasket	1	
24		92433 03001 01	Discharge connecting pipe	1	SKKN126
25		01392 12040 00	Stud	4	AM12×40
26		01365 12000 00	Washer	4	12
27		01322 12000 00	Nut	4	M12
28		02201 01215 00	Screw washer	1	
29		02901 00950 10	O ring	1	9.5X1.8
30		18404 03100 00	Plug	1	M12X1.5

\*Not shown in the drawing

# Airend and Inlet valve

(150PSI)





## Airend and Inlet valve

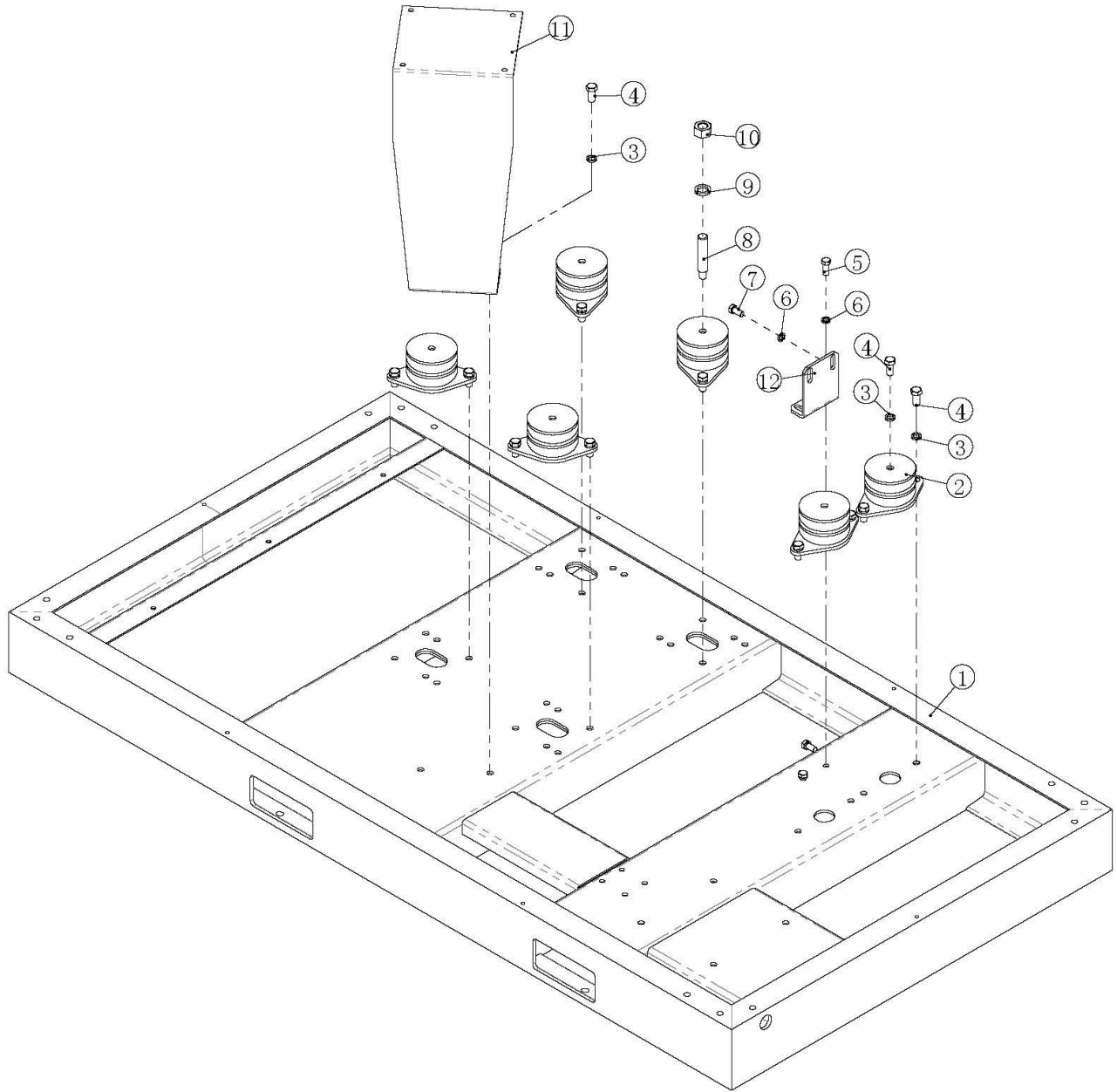
(150PSI)

NO.	VERSION	PN	DESCRIPTION	QTY	REMARK
1		01307 20040 00	Bolt	4	M20×40
2		01365 20000 00	Washer	4	20
3	S01	92433 01001 60	Airend support	1	
4		4060201	Airend	1	
5		02901 15000 30	O-ring	1	150X3.55
6		01664 00000 00	Inlet valve	1	
6A*		04002 00105 02	Inlet valve kit	1	Guidance tape 1, O-ring 235x5.3, Spring 1, Spring 2, O-ring 87.5x3.55, Guidance tape 2, O-ring 150x3.55
6B*		01692 03000 01	Check valve	1	
6C*		01692 00010 03	Blowdown valve	1	
7		01512 06110 00	Joint	1	
8		92433 01100 60	Oil return pipe	1	
9		02809 00102 00	Air filter indicator	1	
10		07702 02030 44	Air filter	1	
11		04401 13015 00	Hoop	2	
12		02907 13130 68	Flexible pipe	1	
13		01513 06100 00	Joint	1	
14		01610 03000 00	Check valve	1	
15		01322 12000 00	Nut	8	M12
16		01365 12000 00	Washer	8	12
17		01392 12040 00	Stud	8	AM12×40
18		02901 03250 30	O-ring	1	32.5X3.55
19		19316 06006 00	Elbow	1	
20		02901 03000 30	O-ring	1	30X3.55
21		02201 00025 00	Screw washer	1	
22	S02	02217 10604 16	Gasket	1	
23		92533 03001 01	Connecting pipe	1	
24		02201 01215 00	Screw washer	1	
25		02901 00950 10	O-ring	1	9.5X1.8
26		18404 03100 00	Plug	1	M12X1.5

\*Not shown in the drawing

# Base Mounting

---



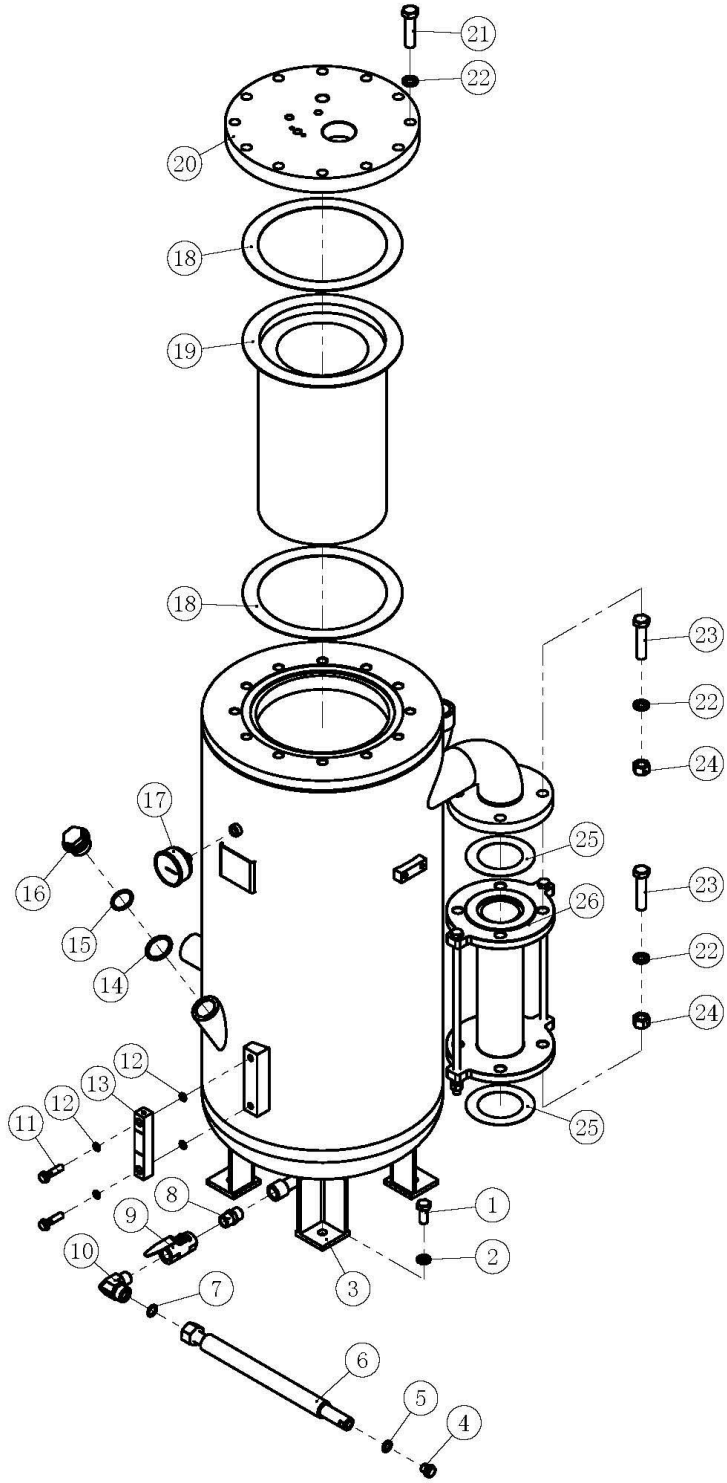
## Base Mounting

(GROUP PN: )

---

NO.	VERSION	PN	DESCRIPTION	QTY	REMARK
1	S01	92433 02010 01	Base	1	
2		02905 00002 00	Absorber	6	
3		01365 14000 00	Washer	14	14
4		01307 14030 00	Bolt	14	M14X30
5		01307 12030 00	Bolt	1	M12×30
6		01365 12000 00	Washer	5	12
7		01307 12025 00	Bolt	4	M12×25
8		20104 02001 00	Bolt	4	
9		01365 22000 00	Washer	4	22
10		01322 22000 00	Nut	4	M22
11	S01	19441 02001 01	Air filter support	1	
12		99136 02001 00	Fixing plate,shipping	1	

# Reservoir



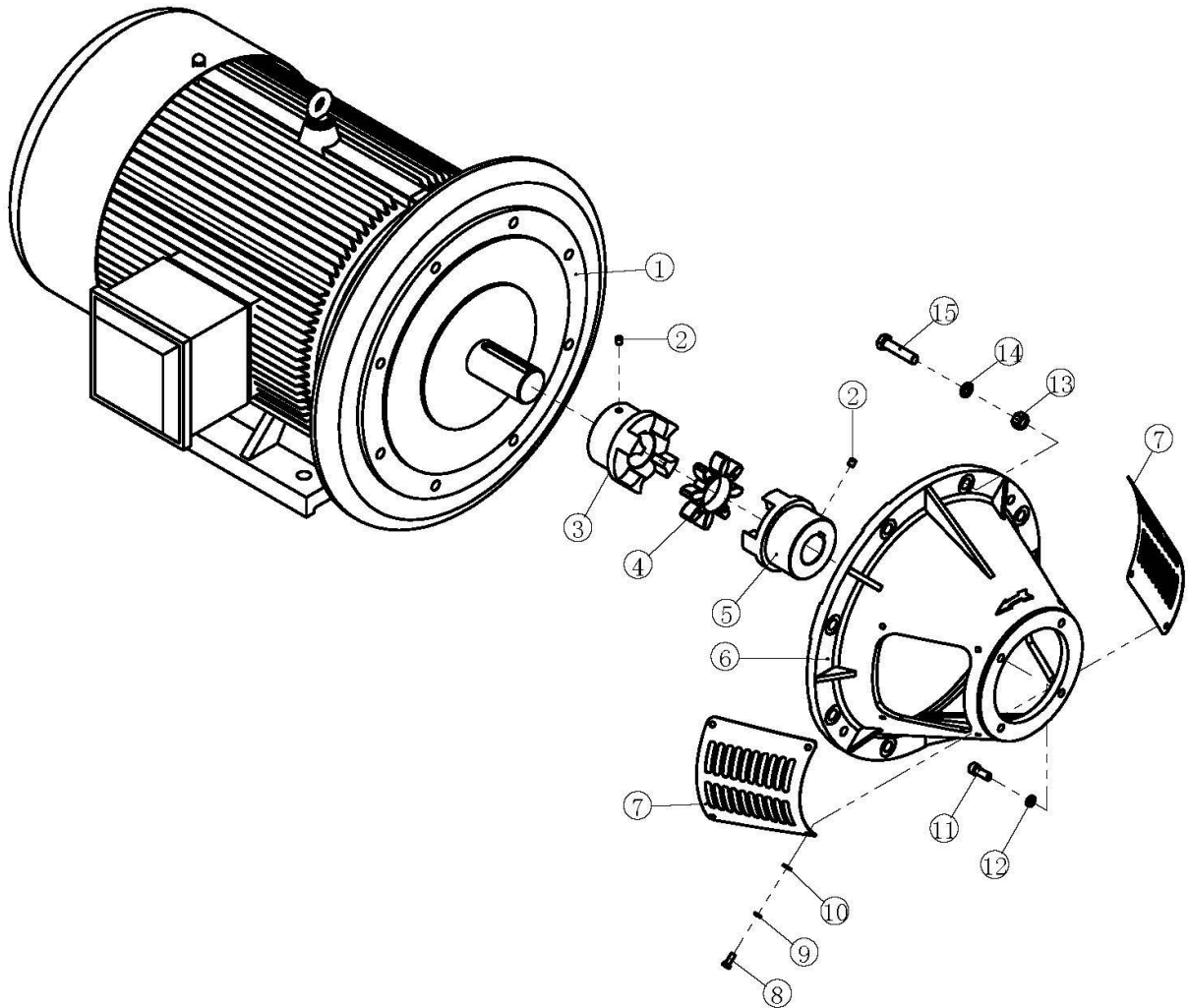
## Reservoir

(GROUP PN: )

NO.	VERSION	PN	DESCRIPTION	QTY	REMARK
1		01307 14030 00	Bolt	4	M14X30
2		01365 14000 00	Washer	4	14
3		19333 03010 00	Reservoir	1	ASME
		19333 03010 92		1	GB
4		13315 03005 00	Plug	1	M14X1.5
5		01534 14000 00	Bonded washer	1	14
6		92233 03006 00	Drain pipe	1	
7		02901 01600 20	O-ring	1	16X2.65
8		13315 03006 00	Joint	1	
9		01613 01500 00	Ball valve	1	DN15
10		99121 03002 00	Elbow	1	
11		13315 03001 00	Hollow bolt	2	M10X40
12		02901 01060 10	O-ring	4	10.6X1.8
13		13315 03002 00	Oil sight glass	1	
14		02201 03320 00	Screw washer	1	
15		02901 03350 30	O-ring	1	33.5X3.55
16		13340 03003 00	Plug	1	
17		02801 06308 00	Pressure gage	1	axial
18		02216 22273 16	Gasket	2	
19		55220 273360	Fluid/air separator element	1	
20		19333 03010 60	Top cover	1	
21		01306 16065 00	Bolt	12	M16X65
22		01365 16000 00	Washer	20	16
23		01306 16070 00	Bolt	8	M16X70
24		01322 16000 00	Nut	8	M16
25		02216 06516 06	Flange gasket	2	
26		19333 03001 10	Flexible pipe	1	

## Driving System and Electrical Motor

---

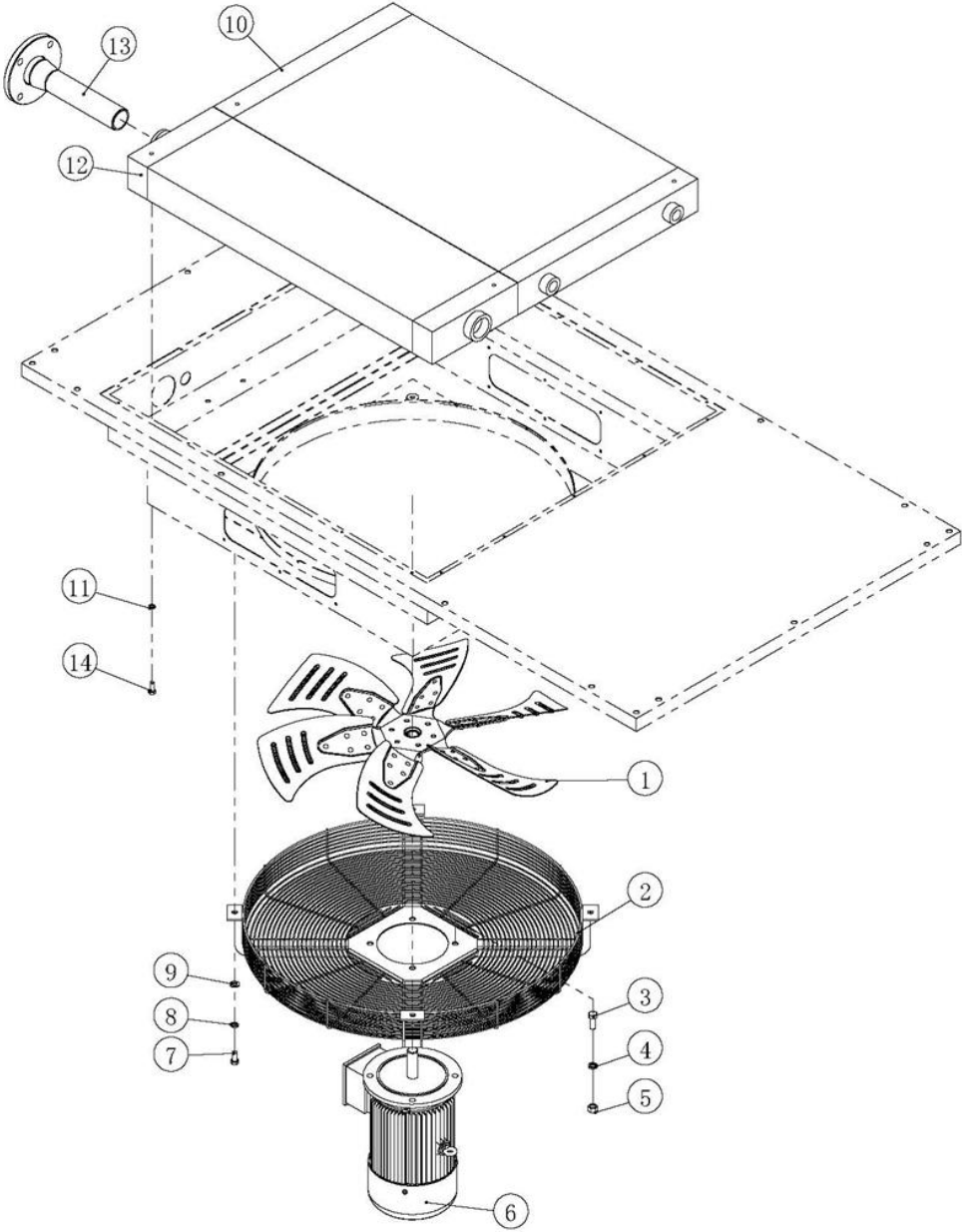


## Driving System and Electrical Motor

(GROUP PN: )

NO.	VERSION	PN	DESCRIPTION	QTY	REMARK
1		62075 46642 25	Motor(WEG)	1	460V/Fixed speed/IE3
		62075 36642 25			230/460V/Fixed speed/IE3
		62075 46942 25			460V/VSD/IE3
		62075 58942 25			575V/VSD
		62075 58642 25			575V/Fixed speed
2		01347 10010 00	Set screw	2	M10X10
3		01905 06506 50	Half coupling	1	
4		01908 06500 00	Elastomer	1	
5		01905 06505 50	Half coupling	1	
6		880103001	Connecting cylinder	1	
7		01910 12130 10	Connecting cylinder cover	2	
8		01307 08020 00	Bolt	8	M8X20
9		01365 08000 00	Washer	8	8
10		01366 08000 00	Washer	8	8
11		01344 12030 00	Bolt	4	M12x30
12		01365 12000 00	Washer	4	12
13		01322 16000 00	Nut	8	M16
14		01365 16000 00	Washer	8	16
15		01306 16070 00	Bolt	8	M16X70

# Air Cooler



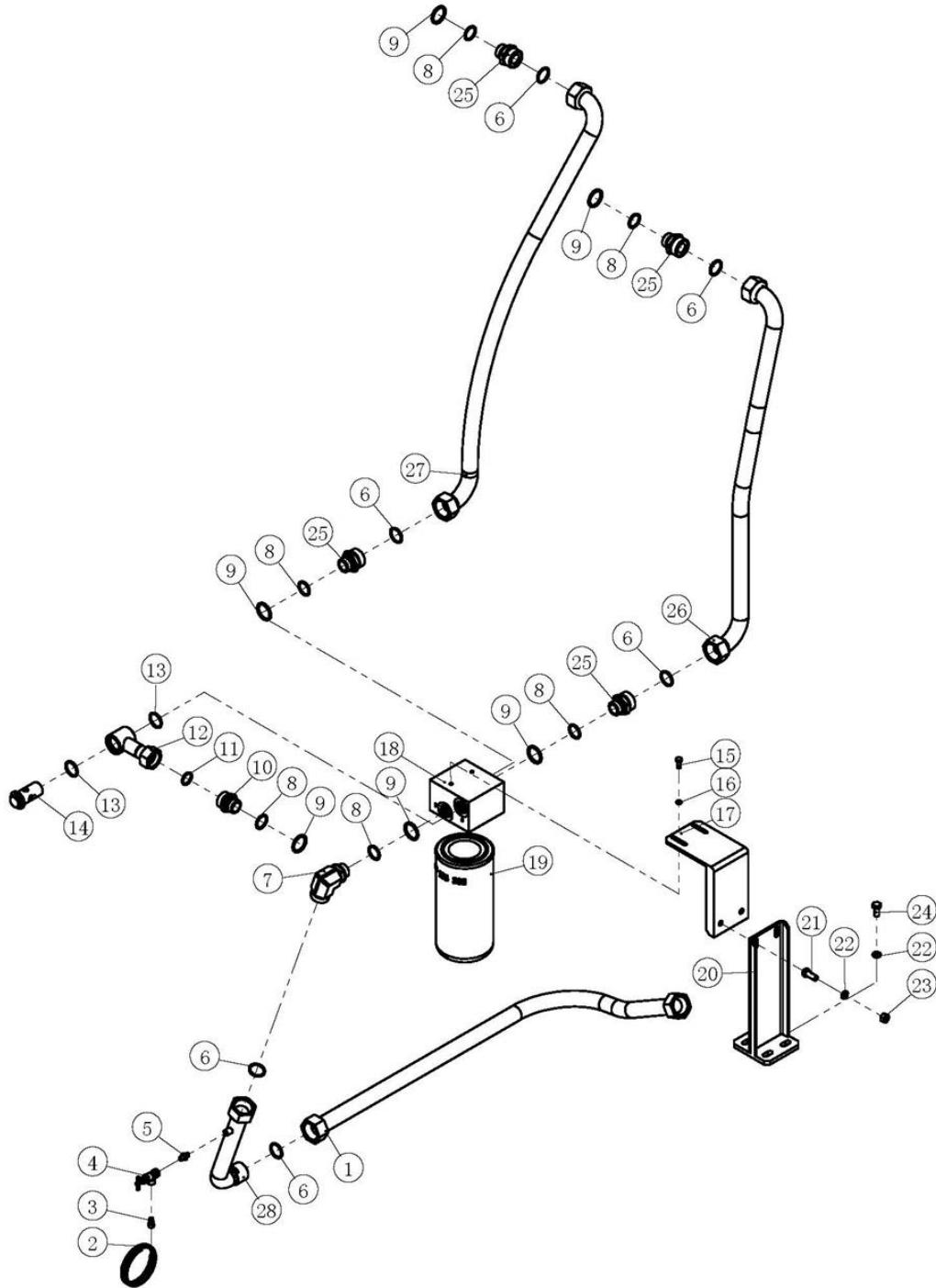


## Air Cooler

(GROUP PN: )

NO.	VERSION	PN	DESCRIPTION	QTY	REMARK
1		07204 80013 00	Fan	1	
2		07205 80097 00	Fan guard	1	
3		01307 14035 00	Bolt	4	M14×35
4		01365 14000 00	Washer	4	14
5		01322 14000 00	Nut	4	M14
6		66002 46651 25	WEG motor	1	460V
		66002 36651 25			230/460
		66002 58651 21			575V
7		01307 12025 00	Bolt	4	M12×25
8		01365 12000 00	Washer	4	12
9		01366 12000 00	Washer	4	12
10		19458 05010 10	Oil cooler	1	
11		01365 10000 00	Washer	8	10
12	S03	19458 05010 20	After cooler	1	
13		92433 05002 01	Discharge pipe	1	
14		01307 10025 00	Bolt	8	M10×25

# Fluid Piping

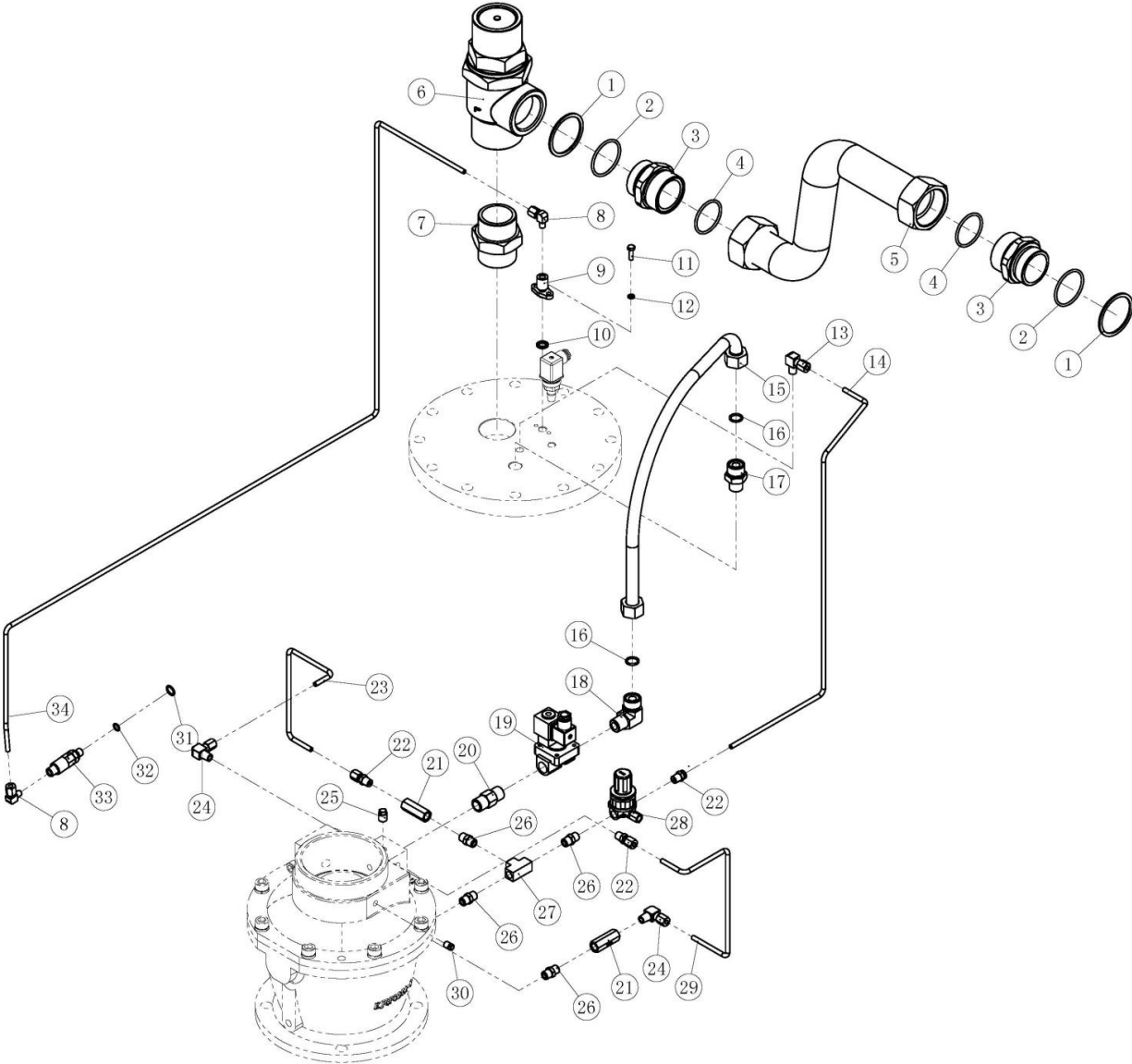


## Fluid Piping

(GROUP PN: )

No.	VERSION	PN	DESCRIPTION	QTY	REMARK
1		92433 06005 07	Rubber hose	1	
2		02917 06040 00	Nylon pipe	1	
3		01511 06100 00	Joint	1	
4		01613 00600 99	Sample valve	1	
5		98018 07011 06	Joint	1	
6		02901 03250 30	O ring	6	32.5X3.55
7		19316 06006 00	Elbow	1	
8		02901 03000 30	O ring	6	30X3.55
9		02201 00025 00	Screw washer	6	
10		13315 07003 09	Joint	1	
11		02901 02580 30	O ring	1	25.8X3.55
12		18404 06001 00	Joint	1	
13		02901 03350 30	O ring	2	33.5X3.55
14		98018 06003 00	Hollow bolt	1	
15		01307 08020 00	Bolt	2	M8×20
16		01365 08000 00	Washer	2	8
17		92433 06001 01	Fixing plate	1	
18		01611 02583 07	Thermal valve	1	
18A*		04004 00021 00	Thermal valve kit	1	Spring, Valve element, Sleeve, O-ring
19		07709 13530 20	Oil filter	1	
20		92433 06002 01	Fixing plate	1	
21		01307 12030 00	Bolt	2	M12×30
22		01365 12000 00	Washer	6	12
23		01322 12000 00	Nut	2	M12
24		01307 12025 00	Bolt	4	M12×25
25		19315 06001 09	Joint	4	G1-M45x2
26		92433 06003 01	Oil pipe	1	Inlet cooler
27		92433 06004 01	Oil pipe	1	Outlet cooler
28		92433 06100 09	Rigid pipe	1	

# Air Piping(Fixed speed)

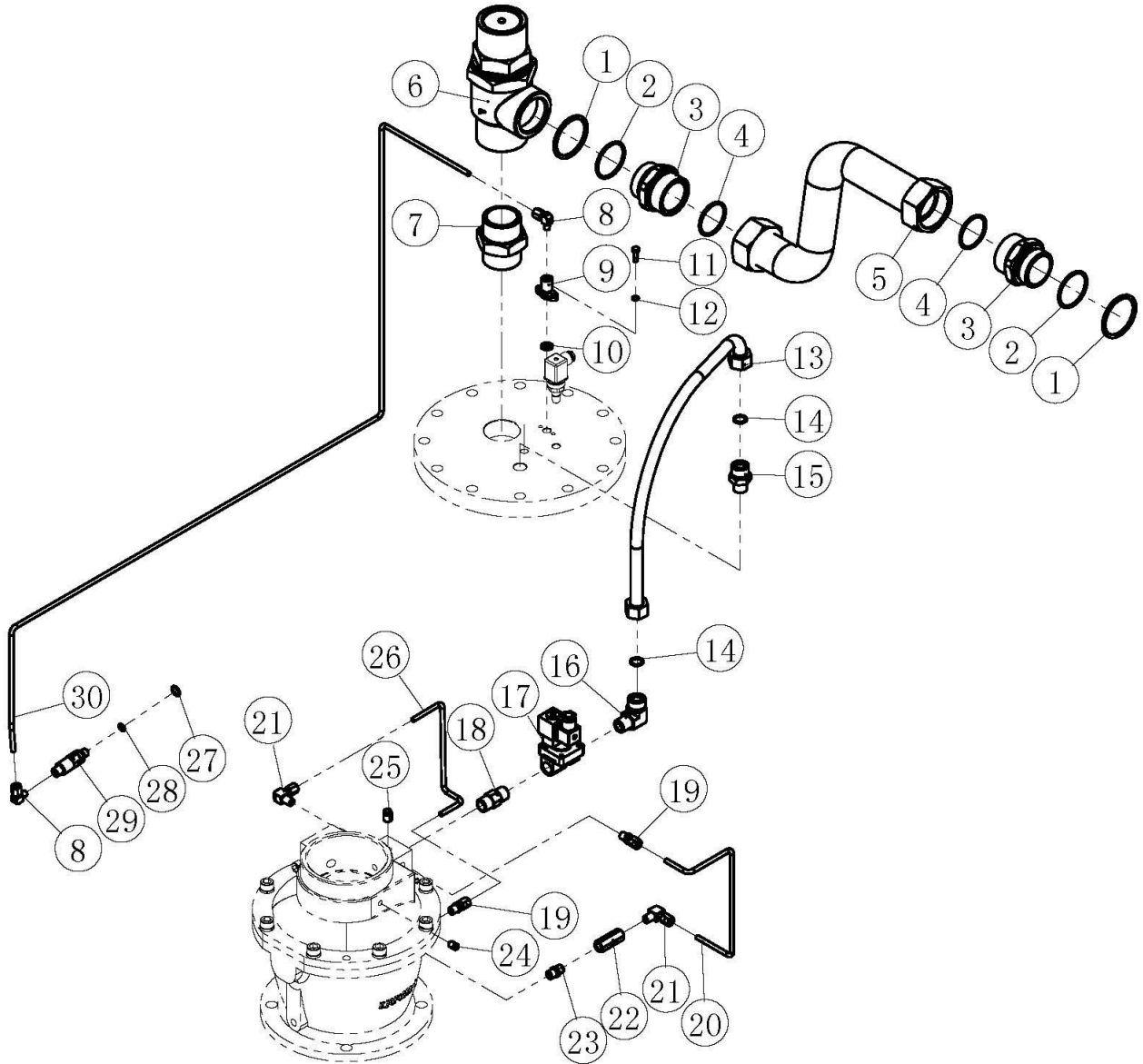


## Air Piping(Fixed speed)

(GROUP PN: )

NO.	VERSION	PN	DESCRIPTION	QTY	REMARK
1		02201 00050 00	Screw washer	2	
2		02901 05600 30	O-ring	2	56X3.55
3		19315 07007 09	Joint	2	
4		02901 05150 30	O-ring	2	51.5X3.55
5		92433 07005 01	Discharge pipe	1	
6		01612 05001 00	MPV	1	
6A*		04006 05001 00	MPV kit	1	Check valve element, Spring A, O-ring 54.5x3.55, Valve element, O-ring 75x3.55, Spring B
7		98018 07003 00	Joint	1	
8		01513 06100 00	Joint	2	
9		21315 03003 01	Joint	1	
10		01534 12000 00	Bond washer	1	12
11		01307 06020 00	Bolt	2	M6×20
12		01365 06000 00	Washer	2	6
13		01513 06670 00	Joint	1	
14		92233 07140 00	Control pipe	1	
15		92233 07100 00	Blowdown pipe	1	
16		02901 01600 20	O-ring	2	16X2.65
17		13315 03006 00	Joint	1	
18		20412 07005 00	Joint	1	R1/2-M27X1.5
19		01603 22012 11	Solenoid valve	1	16bar,12
20		18404 07110 00	Joint	1	R0.5-R0.5
21		01610 02000 03	Check valve	2	2-RP1/4
22		01512 06130 00	Joint	3	
23		92233 07120 00	Control pipe	1	
24		01513 06130 00	Joint	2	
25		02103 00008 00	Plug	1	
26		98018 07011 00	Joint	4	
27		11476 07003 00	Tee joint1/4	1	
28		01604 00005 00	Direct proportion valve	1	
29		92233 07130 00	Control pipe	1	
30		02103 00006 00	Plug	1	
31		02201 01215 00	Screw washer	1	
32		02901 00950 10	O-ring	1	9.5X1.8
33		01610 01010 01	Oil sight check valve	1	
34		92233 07110 00	Oil return pipe	1	

# Air Piping(VSD)



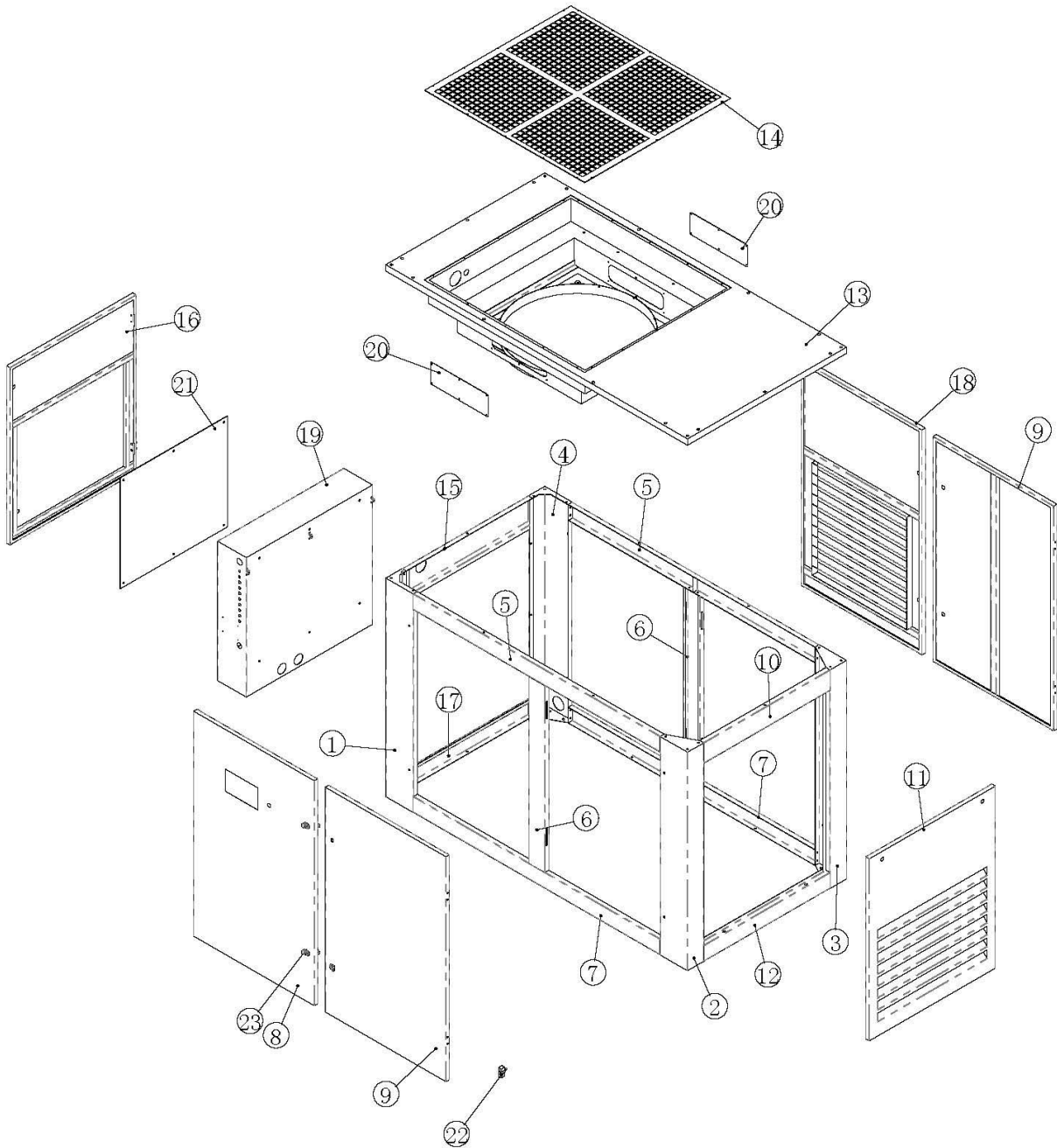
## Air Piping(VSD)

(GROUP PN: )

NO.	VERSION	PN	DESCRIPTION	QTY	REMARK
1		02201 00050 00	Screw washer	2	
2		02901 05600 30	O-ring	2	56X3.55
3		19315 07007 09	Joint	2	G2-M64X2
4		02901 05150 30	O-ring	2	51.5X3.55
5		92433 07005 01	Discharge pipe	1	
6		01612 05001 00	MPV	1	
6A*		04006 05001 00	MPV kit	1	Check valve element, Spring A, O-ring 54.5x3.55, Valve element, O-ring 75x3.55, Spring B
7		98018 07003 00	Joint	1	R2-R2
8		01513 06100 00	Joint	2	
9		21315 03003 01	Joint	1	
10		01534 12000 00	Bond washer	1	12
11		01307 06020 00	Bolt	2	M6×20
12		01365 06000 00	Washer	2	6
13		92233 07100 00	Blowdown pipe	1	
14		02901 01600 20	O-ring	2	16X2.65
15		13315 03006 00	Joint	1	
16		20412 07005 00	Joint	1	R1/2-M27X1.5
17		01603 22012 11	Solenoid valve	1	16bar,12
18		18404 07110 00	Joint	1	R0.5-R0.5
19		01512 06130 00	Joint	2	
20		92233 07130 00	Control pipe	1	
21		01513 06130 00	Joint	2	
22		01610 02000 03	Check valve	1	2-RP1/4
23		98018 07011 00	Joint	1	
24		02103 00006 00	Plug	1	
25		02103 00008 00	Plug	1	
26		92239 07120 00	Control pipe	1	
27		02201 01215 00	Screw washer	1	
28		02901 00950 10	O-ring	1	9.5X1.8
29		01610 01010 01	Oil sight check valve	1	
30		92233 07110 00	Oil return pipe	1	

\*Not shown on the drawing

# Cabinet(Fixed speed)



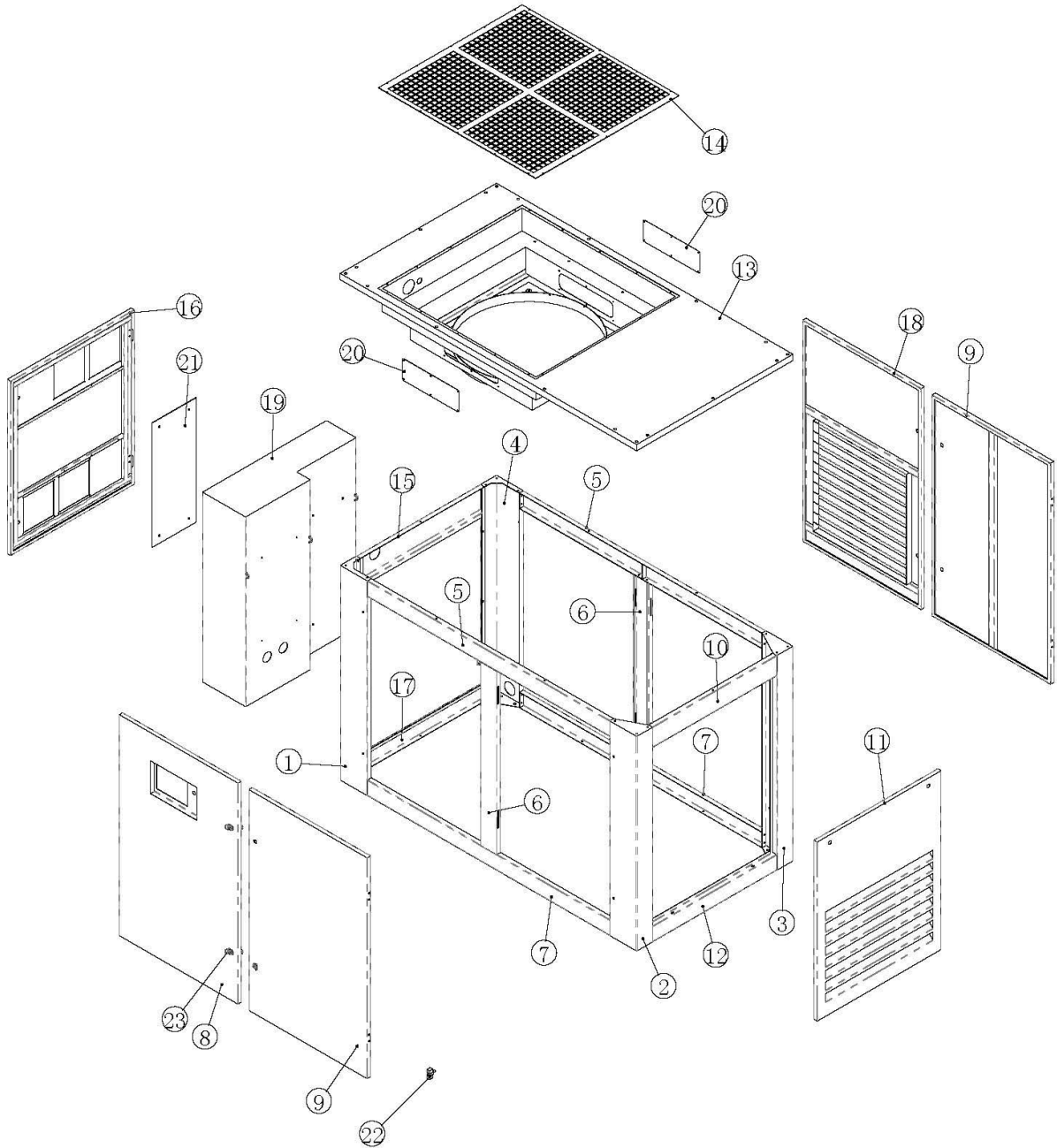


## Cabinet(Fixed speed)

(GROUP PN: )

NO.	VERSION	PN	DESCRIPTION	QTY	REMARK
1	S02	92433 08001 01	Support	1	
2	S03	92433 08002 01	Support	1	
3	S03	92433 08003 01	Support	1	
4	S02	92433 08004 01	Support	1	
5	S04	92433 08005 01	Beam	2	
6	S04	92433 08006 01	Support	2	
7	S04	92433 08007 01	Beam	2	
8	S04	92433 08008 01	Door	1	
9	S04	92433 08009 01	Door	2	
10	S03	92433 08100 01	Beam	1	
11	S03	92433 08110 01	Air intake panel	1	
12	S03	92433 08120 01	Beam	1	
13	S02	92433 08130 03	Top cover	1	
14	S03	92433 08140 01	Top mesh plate	1	
15	S03	92433 08150 01	Beam	1	
16	S02	92433 08160 01	Door	1	
17	S02	92433 08170 01	Beam	1	
18	S01	92433 08180 01	Air intake panel	1	
19	S02	92244 08190 01	Electrical box	1	
20		92433 08200 01	Seal plate	2	
21		92233 09001 00	Electrical control board	1	
22		02701 20601 00	Hinge	10	
23		02702 71111 01	Lock	12	
24		02702 20901 00	Hinge	2	

# Cabinet(VSD)

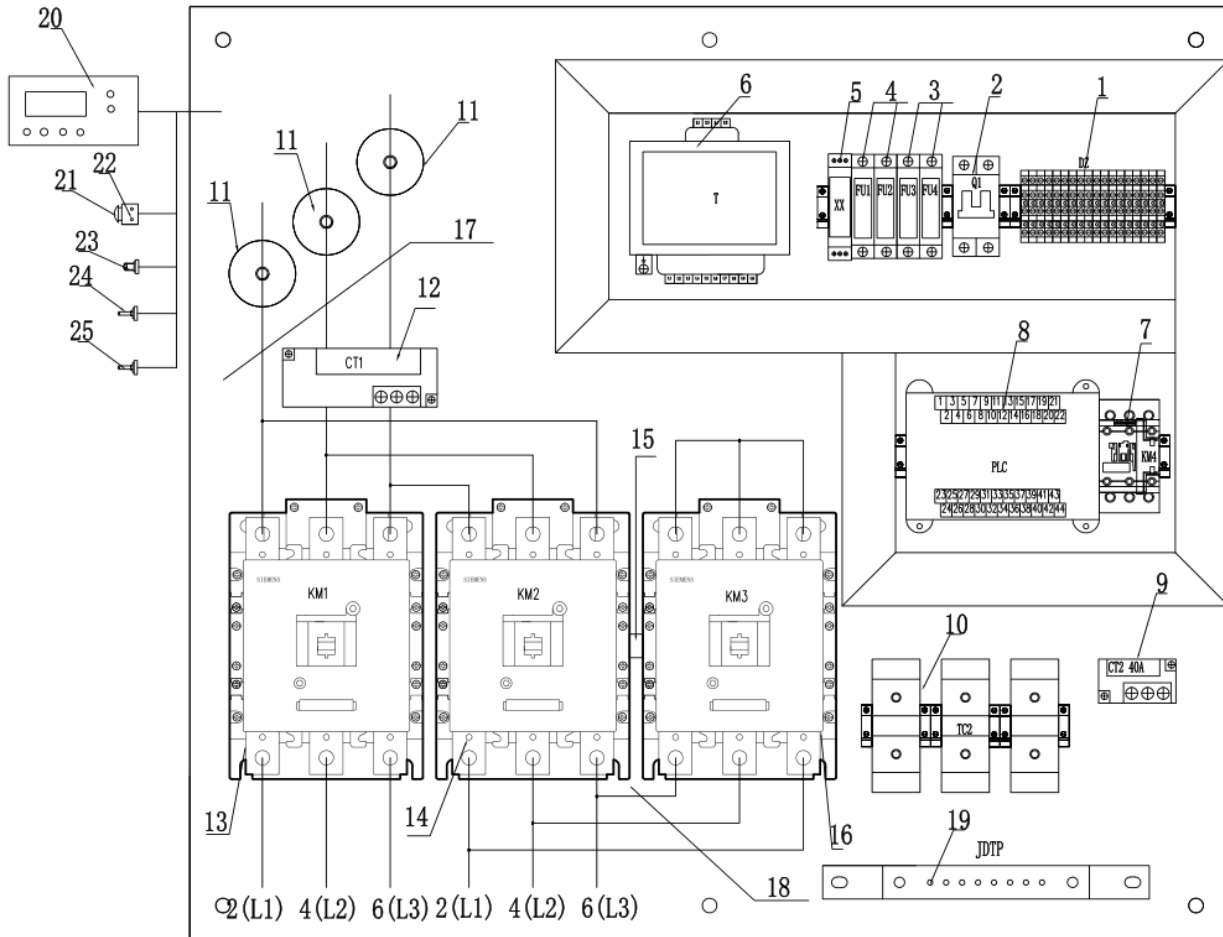


## Cabinet(VSD)

(GROUP PN: )

NO.	VERSION	PN	DESCRIPTION	QTY	REMARK
1	S02	92433 08001 01	Support	1	
2	S03	92433 08002 01	Support	1	
3	S03	92433 08003 01	Support	1	
4	S02	92433 08004 01	Support	1	
5	S04	92433 08005 01	Beam	2	
6	S04	92433 08006 01	Support	2	
7	S04	92433 08007 01	Beam	2	
8	S04	92244 08008 001	Door	1	
9	S04	92433 08009 01	Door	2	
10	S03	92433 08100 01	Beam	1	
11	S03	92433 08110 01	Air intake panel	1	
12	S03	92433 08120 01	Beam	1	
13	S02	92433 08130 03	Top cover	1	
14	S03	92433 08140 01	Top mesh plate	1	
15	S03	92433 08150 01	Beam	1	
16	S02	92244 08160 01	Door	1	
17	S02	92433 08170 01	Beam	1	
18	S01	92433 08180 01	Air intake panel	1	
19		92244 08190 01	Electrical box	1	
20		92433 08200 01	Seal plate	2	
21		92239 09001 00	Electrical control board	1	
22		02701 20601 00	Hinge	10	
23		02702 71111 01	Lock	12	
24		02702 20901 00	Hinge	2	
		07706 98052 00	Electrical cabinet inlet filter frame	2	
		160004-001	Filter element		
		07211 22081 40	Electrical cabinet fan	2	

# Electrical Enclosure



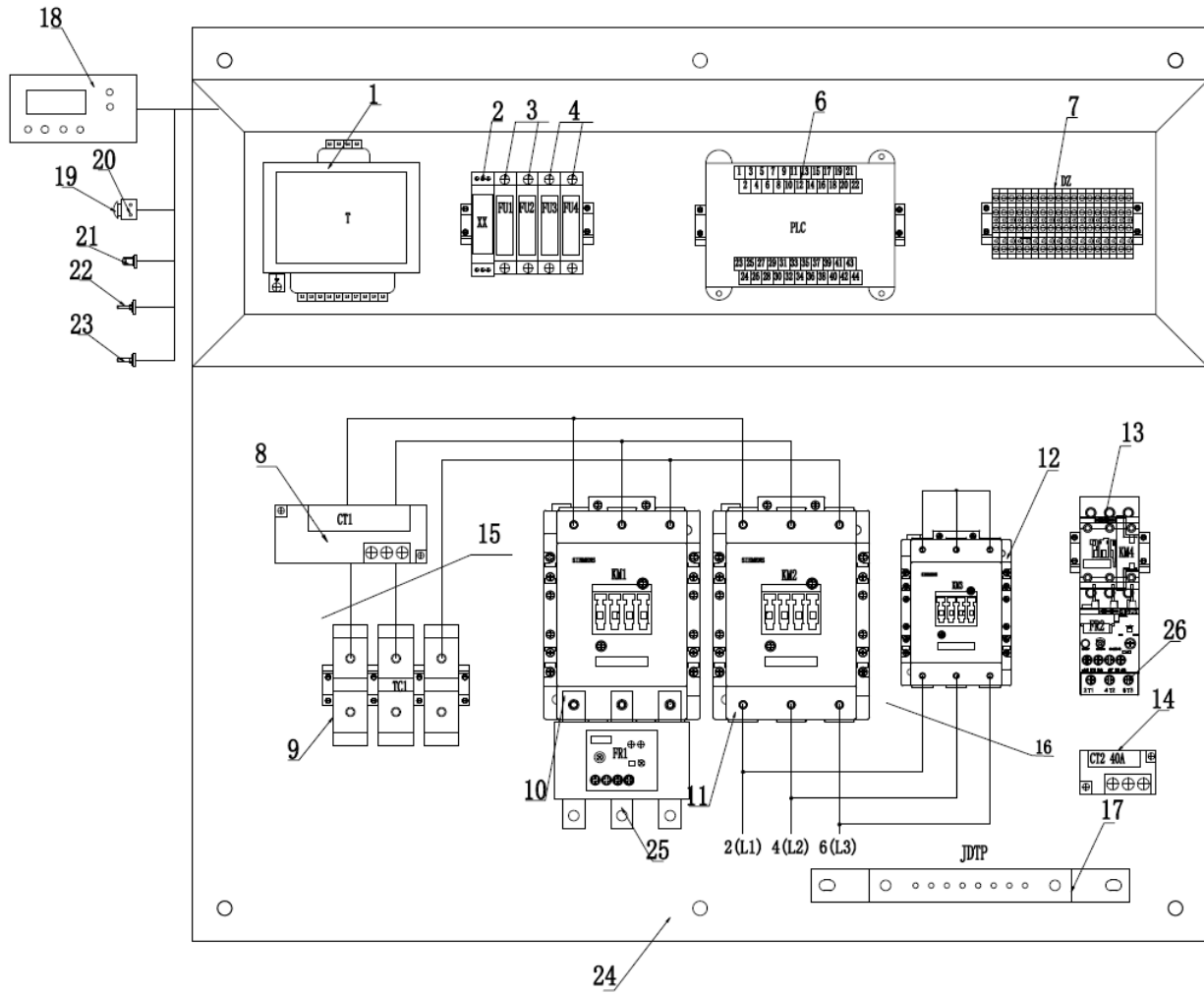
## Electrical Enclosure

( 230V/460V/FS )

NO.	PN	DESCRIPTION	QTY	REMARK
1	08703 00004 00	Terminal block	18	DZ
2	02819 06526 00	Miniature circuit breaker	1	Q1
3	02820 00001 00	Fuse block	2	FU3-FU4
4	02820 00001 00	Fuse block	2	FU1-FU2
5	02814 00080 00	Phase protector	1	XX
6	02818 05001 50	Transformer	1	T
7	02825 60025 01	Fan motor contactor	1	KM4
8	02811 00240 55	Controller	1	PLC
9	02824 20040 00	Fan motor transformer	1	CT2
10	08703 00240 00	Terminal block	3	TC2
11	08702 08050 00	Insulator	3	JYZ
12	02824 00400 01	Current transformer	1	CT1
13	02825 60205 06	AC contactor	1	KM1
14	02825 60205 06	AC contactor	1	KM2
15	09705 31954 20	Mechanical interlock	1	HS
16	02825 60205 06	AC contactor	1	KM3
17	02829 25065 01	Inlet wire copper bar	1	JXTP
18	02829 20225 01	Contactor copper bar	1	TP
19	02829 42524 50	Grounding copper bar	1	JDTP
20	02815 00202 02	Monitor	1	XSQ
21	02827 04844 00	Emergency button	1	JT
22	02827 04104 00	Emergency button support	1	JT
23	02810 01082 00	Pressure sensor	1	DP
24	02810 04001 07	Temperature sensor	1	DT
25	02810 04001 07	Temperature sensor	1	ST
*26	02821 10006 00	Fuse	2	FU1-FU2
*27	02821 10004 00	Fuse	2	FU3-FU4

Note: \* Items are not shown on the drawing.

# Electrical Enclosure



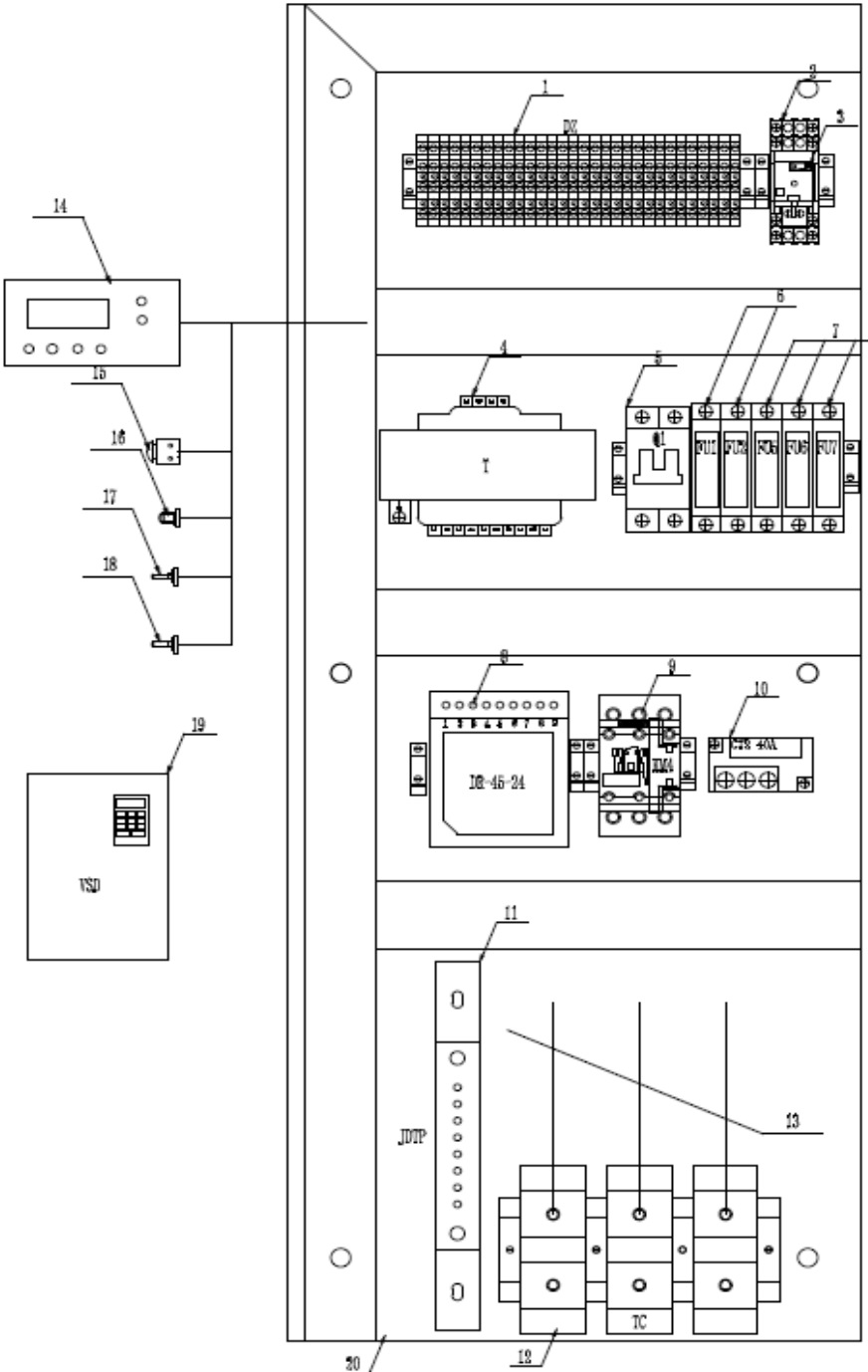
## Electrical Enclosure

( 575V/FS )

NO.	PN	DESCRIPTION	QTY	REMARK
1	02818 05001 50	Transformer	1	T
2	02814 05169 00	Phase sequence protector	1	XX
3	02820 00001 00	Fuse block	2	FU3-FU4
4	02820 00001 00	Fuse block	2	FU1-FU2
5				
6	02811 00220 55	Controller	1	PLC
7	08703 00095 00	Terminal block	18	DZ
8	08703 00095 00	Terminal	3	TC1
9	02824 00200 00	Current transformer	1	CT1
10	02825 60115 01	AC contactor	1	KM1
11	02825 60115 01	AC contactor	1	KM2
12	02825 60095 01	AC contactor	1	KM3
13	02825 60012 01	Fan motor contactor	1	KM4
14	02824 20040 00	Fan motor current transformer	1	CT2
15	08704 02070 00	Cable	1.2M	BVR
16	08704 02035 00	Cable	2.0M	BVR
17	02829 42524 50	Grounding copper bar	1	JDTP
18	02815 00202 02	Monitor	1	XSQ
19	02827 04844 00	Emergency button	1	JT
20	02827 04104 00	Emergency button seat	1	JT
21	02810 01082 00	Pressure sensor	1	DP
22	02810 04001 07	Temperature sensor	1	DT
23	02810 04001 07	Temperature sensor	1	ST
24		Electrical control board	1	DKB
25	02814 35156 22	Thermal relay	1	FR1
26	02814 36126 16	Thermal relay	1	FR2
*27	02821 10006 00	Fuse	2	FU1-FU2
*28	02821 10002 00	Fuse	2	FU3-FU4

Note: \* Items are not shown on the drawing.

# Electrical Enclosure





## Electrical Enclosure

(460V/VSD)

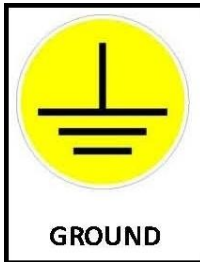
NO.	PN	DESCRIPTION	QTY	REMARK
1	08703 00004 00	TERMINAL BLOCK	30	DZ
2	02814 00002 00	INTERMEDIA RELAY SEAT	1	KA6
3	02814 01102 00	INTERMEDIA RELAY HEAD	1	KA6
4	02818 03150 10	TRANSFORMER	1	T
5	02819 06526 00	BREAKER	1	Q1
6	02820 00001 00	FUSE BLOCK	2	FU1-FU2
7	02820 00001 00	FUSE BLOCK	3	FU5-FU7
8	02808 04524 00	POWER SWITCH	1	DR
9	02825 60012 00	FAN CONTACTOR	1	KM4
10	02824 20040 00	FAN MOTOR CURRENT TRANSFORMER	1	CT2
11	02825 60012 01	GROUNDING COPPER BAR	1	JDTP
12	08703 00095 00	TERMINAL BLOCK	3	TC
13	08704 20070 00	CABLE	2.4M	BVR
14	02811 15154 47	MONITOR	1	XSQ
15	02827 04844 00	EMERGENCY BUTTON	1	JT
	02827 04104 00	EMERGENCY BUTTON SUPPORT	1	
16	02810 01082 00	PRESSURE SENSOR	1	DP
17	02810 04001 07	TEMP. SENSOR	1	DT
18	02810 04001 07	TEMP. SENSOR	1	ST
19	02828 04168 00	INVERTER	1	VSD
20	18423 09008 02	ELECTRIC PLATE	1	DKB
*21	02821 10006 00	FUSE	2	FU1-FU2
*22	02821 10002 00	FUSE	3	FU5-FU7

Note: \* Items are not shown on the drawing.

## Decals

---

Decals information is shown as following.



## Decals

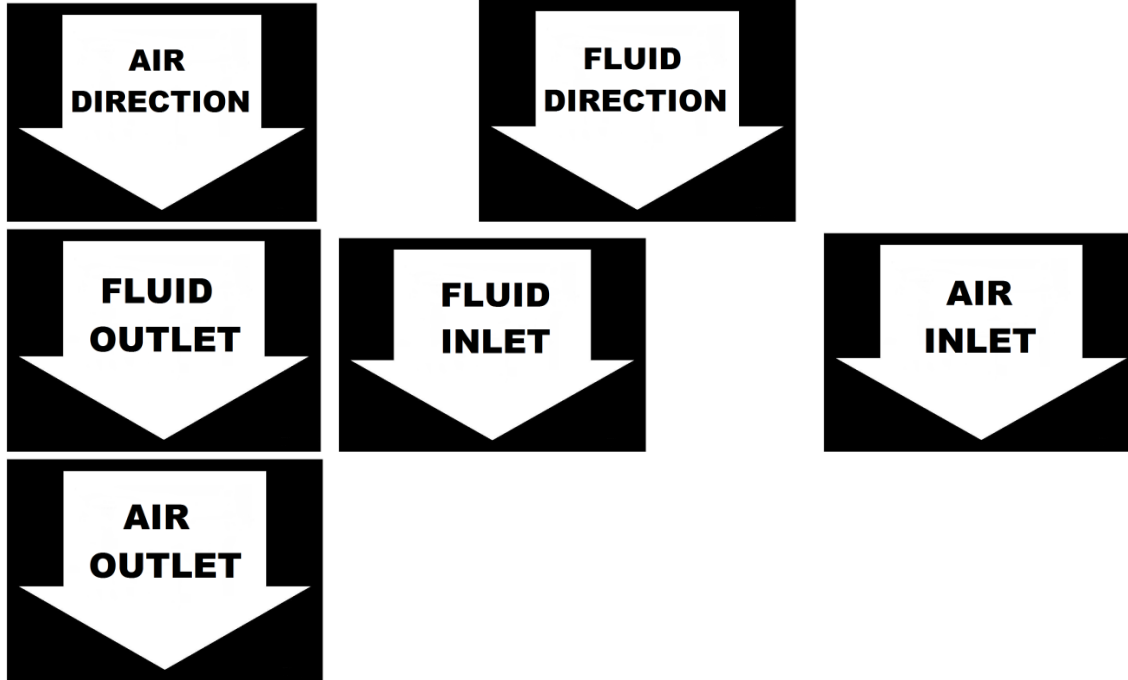


### NOTE:

1. DECALS P/N : 142939

## Decals

---



NOTE:

1. DECALS P/N : 142939

## Standard Terms and Conditions

---

These terms and conditions govern the sale of Products (“Rotary Screw Air Compressors and parts”) and provisions of services by Kaishan Technologies Compressor Co. Ltd (Seller) and its authorized representative or buyer. These terms and conditions (“Agreement”) take precedence over Buyer’s supplemental or conflicting terms and conditions to which notice of objection is hereby given. Neither Seller’s commencement of performance or delivery shall be deemed or construed as acceptance of Buyer’s supplemental or conflicting terms and conditions. Kaishan Technologies Compressor’s failure to object to conflicting or additional terms will not change or add to the terms of this agreement. Buyer’s acceptance of the Products and/or Services from Seller shall be deemed to constitute acceptance of the terms and conditions contained herein.

**Orders:** All orders placed by Buyer are subject to acceptance by Seller. Orders may not be canceled or rescheduled without Seller’s written consent. All orders must identify the products, unit quantities, part numbers, applicable prices and requested delivery dates of the Products being purchased. Seller may at its sole discretion allocate Product among its Buyer. Seller may designate certain Products and Services as non-cancelable, non-returnable and the sale of such Products shall be subject to the special terms and conditions contained in Seller’s Customer Acknowledgement or Non-Returnable Product Form, which shall prevail and supersede any inconsistent terms and conditions contained herein or elsewhere.

**Prices:** The prices of the Products are those prices specified on the front of the invoice or contained within an agreed written contract. Price quotations shall automatically expire in thirty (30) days from the date issued, or as otherwise stated in the quotation.

**Taxes:** Unless otherwise agreed to in writing by Seller, all prices quoted are exclusive of transportation and insurance costs, duties, and all taxes including federal, state and local sales, excise and value added, goods and services taxes, and any other taxes. Buyer agrees to indemnify and hold Seller harmless for any liability for tax in connection with the sale, as well as the collection or withholding thereof, including penalties and interest thereon. When applicable, transportation and taxes shall appear as separate items on Seller’s invoice.

**Payment:** Payment may be made by check, money order, credit card, or wire transfer (all fees are borne by the Buyer). Where Seller has extended credit to Buyer, terms of payment shall be net thirty (30) days from date of invoice, without offset or deduction. On any past due invoice, Seller may impose a monthly interest rate. If Buyer fails to make the required payments the Seller will impose the interest rate each month. If Buyer fails to make each payment when it is due, Seller reserves the right to withdraw credit and thereby suspend or cancel performance under any or all purchase orders or agreements in which Seller has extended credit to Buyer. In the event of default by Buyer, Seller shall be entitled to costs, fees, and expenses including but not limited to recovery of attorney fees, court costs and fees, and collections costs.

## Standard Terms and Conditions

---

**Delivery and Title:** The locations of shipment delivery will be made according to the Seller and Buyer agreement. Title and risk of loss pass to the Buyer upon delivery of the Product to the carrier. Seller's delivery dates are estimates only and Seller is not liable for delays in delivery or for failure to perform due to causes beyond the reasonable control of the Seller, nor shall the carrier be deemed an agent of the Seller. A delayed delivery of any part of an Order does not entitle Buyer to cancel other deliveries. Kaishan Technologies Compressor will comply with various federal, state and local laws and regulation concerning occupational health, safety and environment concerns. Buyer has full responsibility to comply with those laws and regulations during the installation and operation of the equipment.

**Acceptance / Returns:** Shipments will be deemed to have been accepted by Buyer upon delivery of the said shipments to Buyer unless rejected upon receipt. Buyer shall perform all inspections and tests. Buyer deems necessary as promptly as possible but in no event later than 7 days after receipt of Products, at which time Buyer will be deemed to have irrevocably accepted the Products. Any discrepancy in shipment quantity must be reported within 7 days after receipt of Products. Buyer may not return Products without a Return Material Authorization ("RMA") number. RMA's valid for 30 days from the date issued.

**Standard Warranty:** Buyer will honor Product warranties and indemnities authorized by the manufacturer, including any transferable. 90 days warranty is given for service parts from receipt date. Seller warrants to Buyer that Products purchased hereunder will conform to the applicable manufacturer's specifications for such products and that any value-added work performed by Seller on such Products will conform to applicable Buyer's specifications. If Seller breaches this warranty, Buyer's remedy is limited to (at Seller's election) (1) refund of Buyer's purchase price for such Product (without interest), (2) repair of such Products, or (3) replacement of such Products provided that such Products must be returned to Seller, along with acceptable evidence of purchase within 13 days from date of delivery, transportation charges prepaid. No warranty will apply if the Product has been subject to misuse, neglect, accident or modification.

**Limitation of Liabilities:** Buyer shall not be entitled to, and Seller shall not be liable for, loss of profit or revenue, promotional or manufacturing expenses, overheads expenses, business interruption cost, loss of data, removal or reinstallation costs, injury to reputation of buyer, punitive damages, loss of contractor orders or any indirect, special, incidental or consequential damages of any nature. Buyer's recovery from seller for any claim shall not exceed the purchase price paid for the affected products irrespective of the nature of the claim whether in contract, tort, warranty, or otherwise. Buyer will indemnify, defend and hold seller harmless from any claims based on (a) Seller's compliance with buyer's designs, specifications, or instructions, (b) Modification of any products by anyone other than Seller, or (c) use in combination with other products not supplied by seller.

## Standard Terms and Conditions

---

**Use of Products:** Unless otherwise specified. Products sold by Seller are not designed, intended or authorized for use in life support, life sustaining, nuclear, or other applications in which the failure of such Products could reasonably be expected to result in personal injury, loss of life or catastrophic property damage. If buyer uses or sales the Products for use in any such applications: (1) Buyer acknowledges that such use or sale is at Buyer's sole risk; (2) Buyer agrees that Seller and the manufacturer of the Products are not liable, in whole or in part, for any claim or damage arising from such use; and (3) Buyer agrees to indemnify, defend and hold Seller and the manufacturer of the Products harmless from and against any and all claims, damages, losses, costs, expenses and liabilities arising out of or in connection with such use or sale.

**Force Majeure:** Seller is not liable for failure to fulfill its obligations for any accepted Order or for delays in delivery due to causes beyond Seller's reasonable control including, but not limited to, acts of God, natural or artificial disaster, riot, war, strike, delay by carrier, shortage of Product, acts or omissions of other parties, acts or omissions of civil or military authority, Government priorities, changes in law, material shortages, fire, strikes, floods, epidemics, quarantine restrictions, acts of terrorism, delays in transportation or inability to obtain labor, materials or products through its regular sources, which shall be considered as an event of force majeure excusing Seller from performance and barring remedies for non-performance. In an event of force majeure condition, the Seller's time for performance shall be extended for a period equal to the time lost as a consequence of the force majeure condition without subjecting Seller to any liability or penalty. Seller may, at its option, cancel the remaining performance, without any liability or penalty, by giving notice of such cancellation to the Buyer.

**General:** (a) Seller will comply with state law for any dispute from buyer. (b) Buyer may not assign this Agreement without the prior written consent of Seller. Seller or its affiliates may perform the obligations under this Agreement. This Agreement is binding on successor and assigns, (c) Products, including software or other intellectual property, are subject to any applicable rights of third parties, such as patents, copyrights and/or user licenses.

## Appendix

*(If your machine is standard, this page is blank.)*



## Contact Information

---

Kaishan Compressor, LLC.,  
Add.: 15445 Industrial Park Dr., Loxley, AL, Post code: 36551  
Office number: +1 251-202-0577  
[www.KaishanUSA.com](http://www.KaishanUSA.com)